

3 Enjoy

Digital Video Disc Recorder &
Video Cassette Recorder with Digital Tuner

DVDR3545V

Quick Start Guide

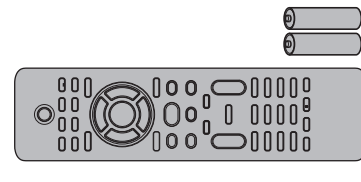


- 1 Connections
- 2 Basic Setup
- 3 Enjoy

What's in the box?



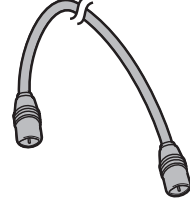
Digital Video Disc Recorder & Video Cassette Recorder with Digital Tuner



Remote Control
with Batteries
(AAAA2)



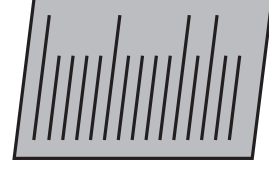
RCA Audio / Video Cables



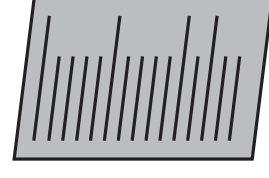
RF Coaxial Cable



User Manual



Quick Start Guide

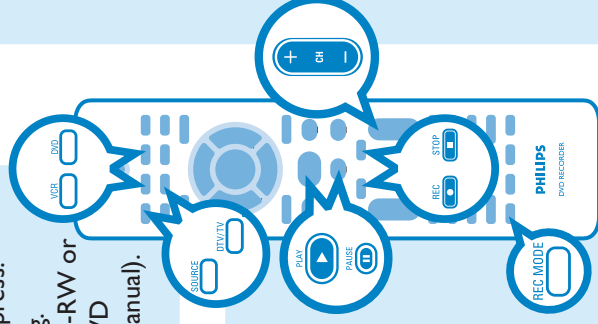


Registration Card

Start Recording

For DVD recording, press **DVD** first.
For VCR recording, press **VCR** first.

- 1 Insert a recordable disc (make sure the disc is compatible with this unit) or a cassette tape.
- 2 Press **REC MODE** to select a recording mode.
- 3 Press **SOURCE** repeatedly to select the appropriate external input channel to record from. (e.g. TUNER, E1, E2 or E3(DV-IN))
- To record a **TV programme**: Press **DTV/TV** to select analog TV or digital TV, then use **CH + / -** or the **Number buttons** to select a desired channel to record.
- 4 Press **REC** to start recording.
Press **REC** again to make recording for 30 minutes. Press **REC** repeatedly to extend the recording time by 30 minutes for each press.
- 5 Press **STOP** to stop the recording.
You will need to finalize DVD+R, DVD-RW or DVD-R to play them back on other DVD players (refer to page 56 in the User Manual).



Start Playback

For DVD playback, press **DVD** first.
For VCR playback, press **VCR** first.

- 1 Insert a playable disc or a prerecorded cassette tape.
- 2 Press **PLAY** to start playback.
- 3 Press **STOP** to stop playback.

To pause playback:
Press **PAUSE**.

To resume playback:
Press **PLAY**.

Bi-Directional Dubbing

You can copy contents in a DVD to a cassette tape, or do vice versa. This function is available only when the contents are not copy-protected (refer to pages 53-54 in the User Manual).

Types of Media Used on This Recorder

- * DVD-RW/-R recorded in VR mode or non compatible recording format are not playable.
- * DVD-RW recorded in the mode other than +VR is not recordable on this unit unless you erase all contents in the disc (refer to page 87 in the User Manual).
- * DVD-R recorded in the mode other than +VR is not recordable on this unit.

Type	Playback	Record
DVD+RW	✓	✓
DVD-R	✓	✓
DVD-RW	✓	✓
DVD-R	✓	✓
VHS	✓	✓
DVD+R Double Layer	✓	✗
DVD-video	✓	✗
CD-DA (audio CD)	✓	✗

Need help?

User Manual

See the user manual that came with your Philips recorder.

Online

Go to www.philips.com/welcome.

Hotline

Call 1-866-771-4018 for our operators.



2009 © P&F USA, Inc.
P.O.Box 672768 Marietta, Georgia 30006
All rights reserved.

Printed in China
E9H91UD_E9H9TUD
1VMN27300A ★★★★★



Be responsible
Respect copyrights

PHILIPS

1

Connections

Start with the "Basic Connection".

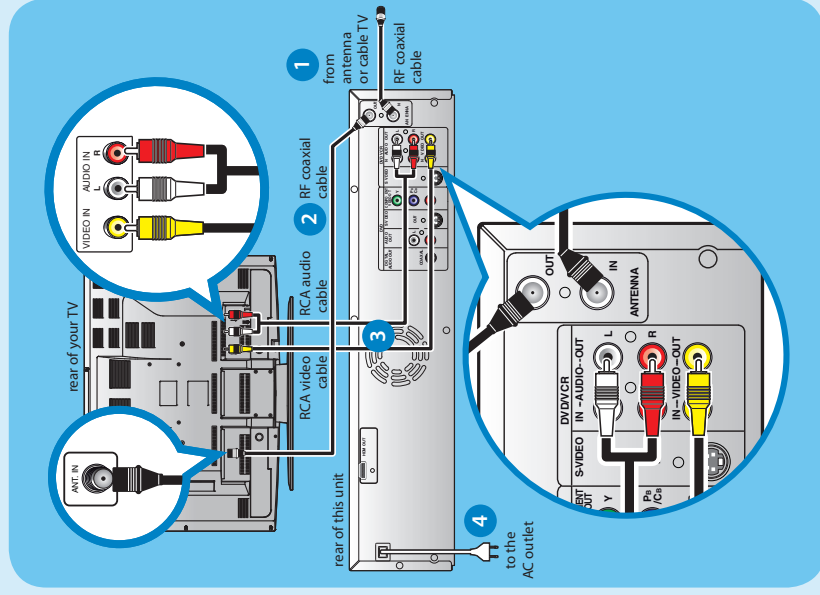
Basic Connection

A Before Connecting

- 1 Disconnect the power cords of the devices from the AC outlet.
- 2 Disconnect RF coaxial cable from antenna input jack of your TV.

B Connecting

Make the connections as illustrated below.



- 1 Connect the RF coaxial cable from the TV antenna or cable TV to the ANTENNA IN jack of this unit.
- 2 Use RF coaxial cable to connect ANTENNA OUT jack of this unit to the antenna input jack of your TV. **AND**
- 3 Use RCA audio / video cables to connect the AUDIO / VIDEO OUT jacks of this unit to the audio / video input jacks of your TV.
- 4 Plug in the power cords of the devices to the AC outlet.

2

Basic Setup

A Finding the Viewing Channel

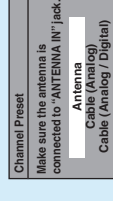
- 1 Press **STANDBY-ON** to turn on the unit.
- 2 Turn on your TV.
- If connected to your VCR, make sure it is switched off or in standby mode before proceeding.
- 3 Press "2" on the TV's remote control, then press channel down button repeatedly until you see the "Initial Setup" menu. This is the correct viewing channel (external input channel) for the recorder.



For some TVs, there may be a button on the TV's remote control that accesses the external input channel. It may be labeled "**SOURCE**", "**AV**", or "**SELECT**". In such case, press it repeatedly. * **Refer to your TV's user manual for details.**

B Initial Setting

- 1 Use **▲ / ▼** to select your desired language, then press **OK**.
- 2 Use **▲ / ▼** to select the type of broadcasting signal, then press **OK**.



The unit will start getting channels available in your area.
Antenna:
 (When using antenna)
 The channels broadcasted in analog TV and digital TV are automatically scanned and memorized.
 Only the receivable channels in the area will be memorized.

Cable (Analog):
 (When using basic cable)
 The channels broadcasted in analog CATV are automatically scanned and memorized.
Cable (Analog / Digital):
 (When using basic cable)
 The channels broadcasted in analog CATV and digital CATV are automatically scanned and memorized.

- 3 Press **OK** to activate "Clock Setting".



- 4 Use **◀ / ▶** to select an item to set, and use **▲ / ▼** to select the contents to suit your preference, then press **OK** when you finish setting all the contents.

Your Philips recorder is now ready for use!

Connection to a Cable / Satellite Box

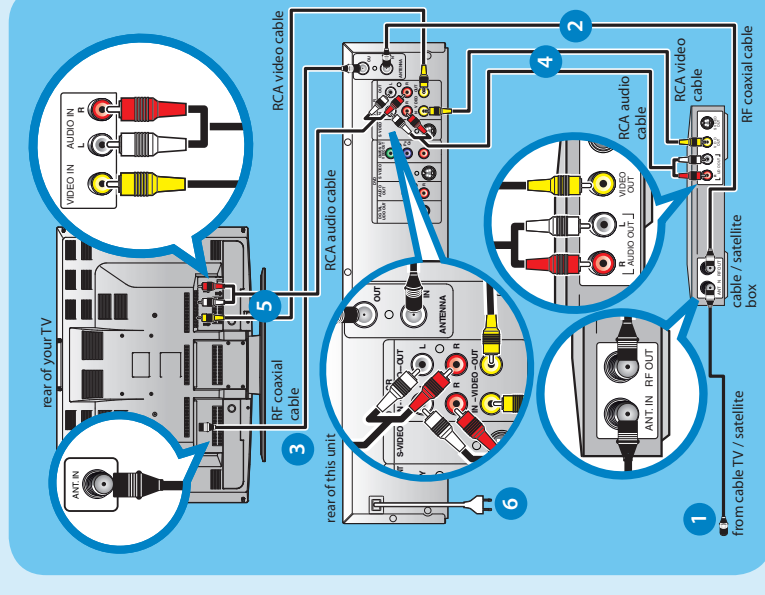
If you have a **Cable / Satellite Box**, follow the instructions below.

A Before Connecting

- 1 Disconnect the power cords of the devices from the AC outlet.
- 2 Disconnect RF coaxial cable from antenna input jack of your TV.

B Connecting

Make the connections as illustrated below.



- 1 Connect the RF coaxial cable from the cable TV / satellite to the antenna input jack of your cable / satellite box.
- 2 Use RF coaxial cable to connect the RF output jack of your cable / satellite box to ANTENNA IN jack of this unit.
- 3 Use RF coaxial cable to connect ANTENNA OUT jack of this unit to the antenna input jack of your TV.
- 4 Use RCA audio / video cables to connect the audio / video output jacks of your cable / satellite box to the AUDIO / VIDEO IN jacks of this unit.
- 5 Use RCA audio / video cables to connect the AUDIO / VIDEO OUT jacks of this unit to the audio / video input jacks of your TV.
- 6 Plug in the power cords of the devices to the AC outlet.

* **Refer to the user manual for other connection methods.**

RF Modulator Connection

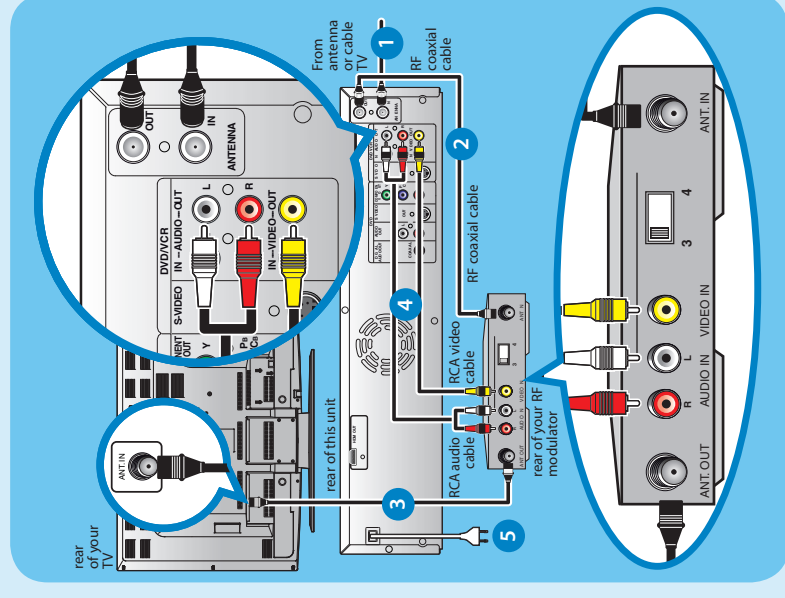
If your **TV has antenna in jack only**, it is still possible to connect this unit to your TV by using a commercially available stereo audio / video RF modulator. In this case, follow the instructions below.

A Before Connecting

- 1 Disconnect the power cords of the devices from the AC outlet.
- 2 Disconnect RF coaxial cable from antenna input jack of your TV.

B Connecting

Make the connections as illustrated below.



- 1 Connect the RF coaxial cable from the TV antenna or cable TV to the ANTENNA IN jack of this unit.
- 2 Use RF coaxial cable to connect ANTENNA OUT jack of this unit to the antenna input jack of your RF modulator.
- 3 Use RF coaxial cable to connect antenna output jack of your RF modulator to the antenna input jack of your TV.
- 4 Use RCA audio / video cables to connect the AUDIO / VIDEO OUT jacks of this unit to the audio / video input jacks of your RF modulator.
- 5 Plug in the power cords of the devices to the AC outlet.

* RF modulator is not supplied with this unit. You need to purchase it at your local store.

Free Manuals Download Website

<http://myh66.com>

<http://usermanuals.us>

<http://www.somanuals.com>

<http://www.4manuals.cc>

<http://www.manual-lib.com>

<http://www.404manual.com>

<http://www.luxmanual.com>

<http://aubethermostatmanual.com>

Golf course search by state

<http://golfingnear.com>

Email search by domain

<http://emailbydomain.com>

Auto manuals search

<http://auto.somanuals.com>

TV manuals search

<http://tv.somanuals.com>