

SCB3055NB SCB3065NB

EN User manual

CH 用戶手冊



产品中有毒有害物质或元素的名称及含量

部件名称	有毒有害物质 或元素					
	铅(Pb)	汞(Hg)	镉(Cd)	六价铬 (Cr(VI))	多溴联苯 (PBB)	多溴二苯 醚(PBDE)
充电器	○	○	○	○	○	○
○ : 表示该 有毒有害物质 在该 部件所有均质 材料中的含量均在 SJ/T11363-2006 标准规定的限量要求以下。						
× : 表示该 有毒有害物质 至少在该 部件的某一均质 材料中的含量超出 SJ/T11363-2006 标准规定的限量要求。						

CE 0682 0

Specifications are subject to change without notice.
Trademarks are the property of Koninklijke Philips Electronics N.V. or their respective owners.
2005 © Koninklijke Philips Electronics N.V. All rights reserved.

www.philips.com

SCB3055NB/SCB3065NB, 11 hour charger

EN

Important Safety Instructions:

Save these instructions - this manual contains important safety and operating instructions for this charger. Before using your charger read all instructions and cautionary markings on the charger; the batteries to be charged and the products that use the batteries.

Warning:

- Use to charge Ni-MH batteries only. Do not charge Alkaline, Zinc Carbon, Lithium or any other type of battery not specified on the charger. Other types of batteries might burst or leak causing personal injury.
- For proper battery insertion, please observe pole indications (+/-). See fig. A.
- Do not dispose of in fire, short circuit or open.
- Charge new batteries before using.
- Never alter the plug.
- Do not operate the charger if it has been subjected to shock or if it is damaged.
- Do not disassemble the charger.
- To avoid risk of electric shock, unplug the charger from the electrical outlet before cleaning or when not in use.
- This battery charger is for indoor use only. Do not expose the charger to rain or excessive moisture. Keep the charger away from dust and dirt, which can cause premature wear of parts or harm its normal operation.
- Never use the charger as a power source for any electrical equipment.
- Do not incinerate, disassemble or short circuit batteries since they may burst or release toxic materials.
- This charger is not intended for use by young children or infirm persons without supervision.
- Do not operate the charger if the plug is damaged.
- Do not charge AAA and AA batteries in the same slot.
- Do not charge damaged or leaking batteries.

Care:

- Wipe the charger with a damp cloth occasionally without harsh chemicals, cleaning solvents or strong detergents.
- Charger and batteries must be disposed of separately. Inform yourself about the separate collection system for electrical and electronic products.

Operating instructions

General charging guidelines

- At the same time you can charge 2 or 4 AA/AAA batteries or one or two 9V batteries at the same time.
- For long battery life, only charge empty batteries.
- When charging, ambient temperature should be between 0°C and 40°C (32°F and 104°F).
- Make sure batteries in each pair of slots (1/2 and/or 3/4) are identical (same capacity, and size).

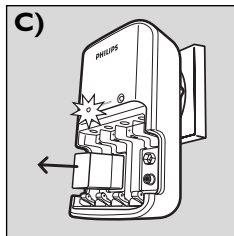
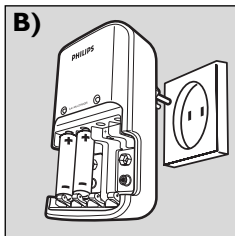
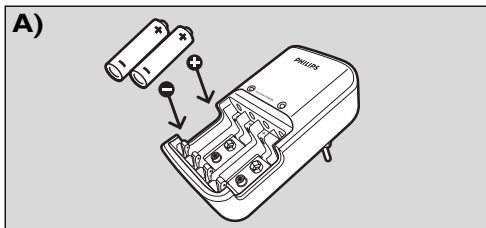
Note: it is normal for the unit and the batteries to become warm while charging.

Charging batteries

- 1 Insert batteries in the charger. See fig. A.
- 2 Plug the charger into a household electric outlet. See fig. B.
 - > When charging batteries, the red LED indicator(s) will remain lit until the charging is stopped manually. See fig. C.
 - > The battery charger will go into trickle charge mode after charging for 11 hours.
- 3 When finished, unplug the charger from the power source and remove the batteries. See fig. C. Always unplug between charges!

Battery charging times: See fig. D.

Visit our website at: www.philips.com



D)

Battery charging times/ 电池充电时间：

Battery type 电池型号	Battery capacity (mAh) 电池容量 (mAh)	Approx. charging time 大约充电时间
5号 Ni-MH	2600 mAh	10 ½ hrs/小时
5号 Ni-MH	2300 mAh	9 ½ hrs/小时
5号 Ni-MH	1800 mAh	7 ¼ hrs/小时
5号 Ni-MH	1600 mAh	6 ½ hrs/小时
7号 Ni-MH	700 mAh	6 ½ hrs/小时
9V	170 mAh	12 ¾ hrs/小时

Visit our website at: www.philips.com
Philips Consumer Electronics
P.O. Box 80002
5600 JB Eindhoven
The Netherlands

SCB3055NB/SCB3065NB, 11 小時充電器

CH

重要安全說明：

保存好這些說明—本手冊包含此充電器的重要安全操作說明。使用充電器前，請閱讀充電器、充電電池和使用這些電池的產品上標明的所有說明。

警告：

- 只能用於為 Ni-MH 電池充電。切勿為？電池、鋅碳電池、？電池以及充電器上沒有標明的其他類型的電池充電。為其他類型的電池充電可能爆炸或洩漏，導致人身傷害。
- 為了能？正確插入電池，請遵守極性指示（+/）。參見圖 A。
- 切勿投入火中，切勿短路使用，切勿打開電池。
- 使用新電池前為其充電。
- 切勿改變交流電源線和插頭。
- 充電器遭受電擊或損壞後切勿再使用。
- 切勿拆卸充電器。
- 為避免電擊風險，清潔充電器前或不用時將其從插座上拔出。
- 此電池充電器只能在室內使用。切勿使充電器置於雨水中或過於潮濕之處。勿使泥土和灰塵進入充電器，否則會使零件過早磨損或妨害正常操作。
- 切勿將充電器用作任何電器的電源。
- 切勿燒棄、拆解或短路使用電池，否則電池可能爆炸或釋放有毒物質。
- 此充電器不能在無人監護的情況下由兒童或體弱的人使用。
- 如果電線或插頭損壞切勿使用充電器。
- 不能在相同的槽內為 7 號和 5 號電池充電。
- 切勿為已壞或洩漏的電池充電。

保養：

- 使用不帶腐蝕性化學製品、清潔劑或強力清潔劑的濕布偶爾擦拭充電器。
- 必須分別處理充電器和電池。請您熟悉關於電氣和電子產品的本地分類收集系統。

操作說明

常規充電指導

- 您可以同時為兩節或四節 5 號/7 號電池充電或者是兩節 9V 電池充電。
- 為延長電池壽命，請耗盡電池的電量後充電。
- 充電時，環境溫度應該在 0°C 到 40°C 之間 (32°F 到 104°F)。
- 確保每對槽 (1/2 和/或 3/4) 中電池相同 (容量和型號相同)。

說明：充電時，裝置和電池發熱屬於正常現象。

為電池充電

- 將電池插入充電器內。參見圖 A。
- 將充電器插入家用插座。見圖 B。
 - > 充電時，紅色充電 LED 指示燈亮起，直至手動停止充電。參見圖 C。
 - > 充電 11 個小時後，電池充電器將進入靜充充電模式。
- 充電完成後，斷開充電器電源並取出電池。參見圖 C。充電期間切勿拔出插頭。

電池充電時間：參見圖 D

請訪問我們的網站：www.philips.com

Free Manuals Download Website

<http://myh66.com>

<http://usermanuals.us>

<http://www.somanuals.com>

<http://www.4manuals.cc>

<http://www.manual-lib.com>

<http://www.404manual.com>

<http://www.luxmanual.com>

<http://aubethermostatmanual.com>

Golf course search by state

<http://golfingnear.com>

Email search by domain

<http://emailbydomain.com>

Auto manuals search

<http://auto.somanuals.com>

TV manuals search

<http://tv.somanuals.com>