

SPC610NC

User manual



PHILIPS

Need help?

Online help: <http://www.philips.com/support>

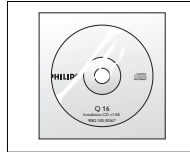
For interactive help, downloads and frequently asked questions.

What's in the box?

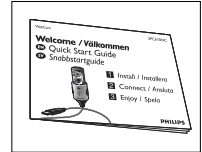
Please check that the following items are packed in the Philips SPC610NC box. They are provided to help you set up and use your Philips SPC610NC.



*Philips SPC610NC
laptop WebCam*

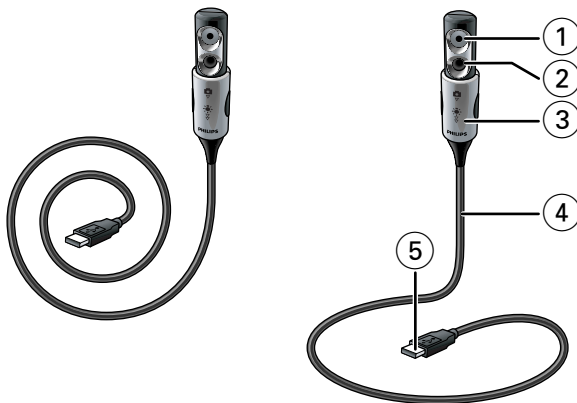


*Installation CD-ROM
including manual*



*Quick Installation
Guide*

Legend of functions



1 WebCam lens

2 Front light / keyboard light

- Illuminates the keyboard.
- Illuminates your face when video chatting under poor lighting conditions.

3 Lens cover / light switch

- Protects the lens when the WebCam is not in use.
- Activates the WebCam (📷): one click downwards (▽).
- Switches the front light / keyboard light (💡) on: two clicks downwards (∇).

Note: The WebCam only functions when the applications are started up. See chapter 'Using the applications'.

4 Flexible neck

Allows you to direct the WebCam in any desired position.

5 USB connector

Connects the WebCam to the USB port of your laptop or notebook.

The WebCam will derive its power from the laptop or notebook when it is connected.

- 2 Need help?**
- 3 What's in the box?**
- 4 Legend of functions**
- 5 Contents**
- 6 Welcome**
- 7 Things you should know**
 - 7 Safety precautions
 - 7 Copyright
- 8 Installation**
 - 8 Installing the WebCam software
 - 9 Connecting the WebCam to your laptop
 - 10 Putting the WebCam into operation mode
- 11 WebCam settings**
 - 11 General controls
 - 12 Picture controls
- 15 Using the applications**
 - 15 V Lounge
 - 15 Skype
 - 15 MSN Messenger
 - 16 Yahoo! Messenger
 - 17 AOL Instant Messenger
 - 17 Making snapshots using Windows® XP
- 18 Technical specifications**
- 19 Important information**
 - 19 Disclaimer
 - 19 FCC compliance
 - 20 Environmental information
 - 20 System requirements
 - 20 Disclaimer of warranty
 - 20 Limitations of damages

Welcome

The Philips SPC610NC laptop WebCam you have just purchased is manufactured to the highest standards and will give you years of trouble-free use. Brilliant images and blazing colours, that's what you get with the SPC610NC laptop WebCam.

Forget about installing interface cards and separate power supplies, because you don't need them any more. Power is supplied direct to the camera through the USB cable and the camera returns video straight to your laptop or notebook!

After installation, the new WebCam can be used for all sorts of applications, such as:

- **Front light / keyboard light:** switch on the front light / keyboard light to illuminate the keyboard or your face when you are working or video chatting under poor lighting conditions;
- **Video conferencing:** use the Philips SPC610NC laptop WebCam for video chatting and conferencing (the Philips SPC610NC laptop WebCam works with MSN Messenger, Yahoo! Messenger, AOL Messenger, Windows NetMeeting and Windows Messenger);
- **Video e-mail / Video capture:** create your own video presentations, video mail, product demonstrations, training videos, Internet clips etc.;
- **Snapshot images:** use images in presentations, create postcards, or send them via e-mail or on diskette. The WebCam works with all applications that use the TWAIN interface to acquire an image.
- **Editing and special effects:** after recording the images you want with the Philips SPC610NC laptop WebCam, the images can be easily edited using image or video editing programs.

The following sections in this manual give a step-by-step description of the installation process and explain how to use the Philips SPC610NC laptop WebCam.

Please read the following instructions carefully, and retain them for future reference. It may be helpful to have the instructions for use for the laptop or notebook at hand for reference.

Safety precautions

Observe the following guidelines to ensure that the WebCam will operate safely and to prevent defects.

- Do not use your WebCam in environments outside the following range: temperature: 0°C to 40°C, relative humidity: 45% ~ 85%.
- Do not use or store your WebCam in/under:
 - direct sunlight exposure;
 - very humid and dusty environment;
 - near any kind of heat sources;
- If your WebCam gets wet, dry it with soft cloth as soon as possible.
- If the lens is dirty Do NOT touch the lens with your fingers.
- Clean the outside of the WebCam with a soft cloth.
- Do NOT use cleaning fluids based on alcohol, methylated spirit, ammonia, etc.
- Do NOT attempt to disassemble or repair your WebCam by yourself. Do not open the WebCam. In the event of technical difficulties return it to your Philips retailer.
- Do NOT use your WebCam in the water.
- Protect the WebCam from oil, vapour, steam, moisture, and dust.
- Never point the WebCam lens at the sun.

Copyright

Copyright© 2003 by Philips Consumer Electronics B.V.
All rights reserved. No part of this publication may be reproduced, transmitted, transcribed, stored in a retrieval system or translated into any language or computer language, in any form or by any means, electronic, mechanical, magnetic, optical, chemical, manual or otherwise, without prior written permission from Philips. Brands and product names are trademarks or registered trademarks of their respective companies.

Installation

Installing the WebCam software

The software supplied only works on PCs and laptops with the operating systems Microsoft® Windows® 98SE, ME, 2000 and XP.

Notes!

- Unplug all your USB devices (except USB keyboard and USB mouse) before you start.
- Do not plug in your WebCam yet.
- Run the Installation CD-ROM first.
- Have your Windows® CD-ROM at hand.

1 Place the installation CD-ROM in your laptop's CD-ROM-/DVD drive.



> After a couple of seconds the the 'Language selection' screen appears automatically.

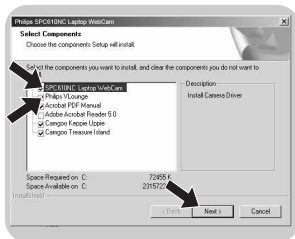
Note!

If the 'Language selection' screen does not appear automatically, open the Microsoft® Windows® Explorer and double click on the 'Set-up.exe' icon in the CD-ROM directory.

2 Select your language and click on the 'OK' button.

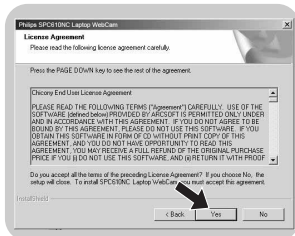
> The following screen appears.

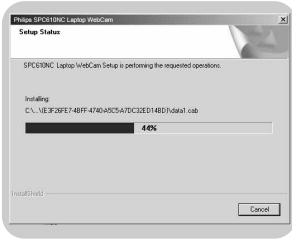
3 Select at least the 'SPC610NC WebCam Driver' and click on the 'Next' button.



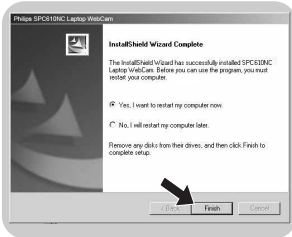
> The following software license agreement appears.

4 Click on 'Yes' to continue the installation.






> The following screen, including a progress bar, appears.



> The following screen appears when the installation was successful.

5 Click on 'Finish'.

> The V(ideo)-Lounge desktop shortcut  will be installed after installation.

> Via VLounge you have access to all WebCam-related software. See 'Using the applications'.

6 You can now connect your laptop WebCam.

Note!

The SPC610NC laptop WebCam is 'XP Plug & Play'. This means if you are running Windows XP and you have installed Service Pack 2 and the latest Microsoft Windows XP updates you don't need to install the SPC610NC PC Camera Driver. Simply plug in the WebCam and you can start using your SPC610NC laptop WebCam.

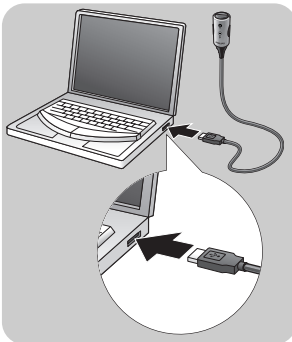
Connecting the WebCam to your laptop

1 Be sure to run the installation CD first, before connecting the WebCam to the laptop or notebook.

2 Be sure your laptop or notebook is activated.

3 Connect the USB connector to the USB port of the laptop.

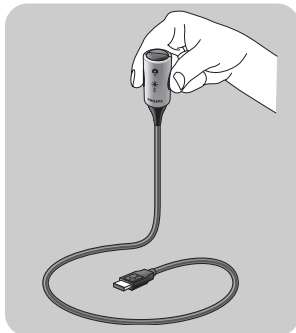
> The WebCam will now derive its power from the laptop.



Installation

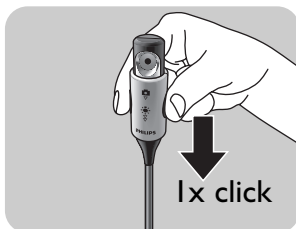
Putting the WebCam into operation mode

1 Bend the WebCam neck into the desired position.



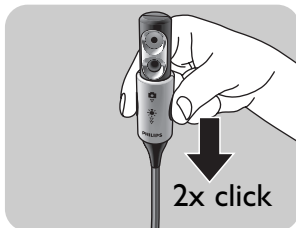
2 Switch on the WebCam (📷) by sliding the **lens cover (light switch)** one click downwards (▽).

> The WebCam is now in operation mode but will only function when the applications are started up.
See chapter 'Using the applications'.




• If desired you can switch on the front light / keyboard light (☀️) by sliding the **light switch (lens cover)** one more click downwards (▽▽).

To switch off the front light / keyboard light (☀️), slide the **light switch (lens cover)** one click upward.

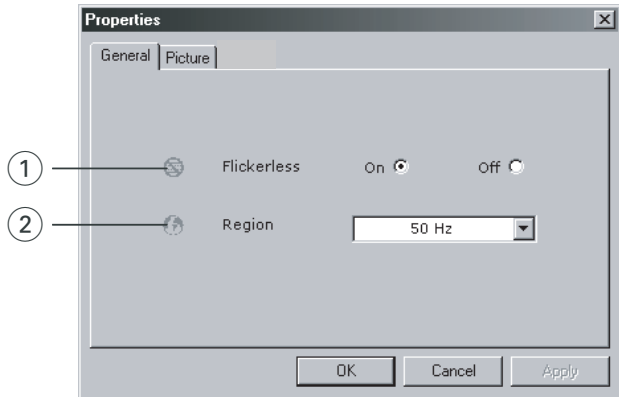


Notes!

- When using the WebCam be sure to slide the **lens cover (light switch)** at least one click downwards (▽).
- When the WebCam is not in use, be sure to slide the **lens cover (light switch)** all the way up (two clicks) to protect the lens.

The Philips SPC610NC video property can be changed from within an application, or independently by clicking the VProperty icon  which can be found in the Windows taskbar bottom right of your screen. Most applications can show a 'live preview' video image on your monitor. Always use this option to see the effect of changed settings on your screen.

General controls



① Flickerless

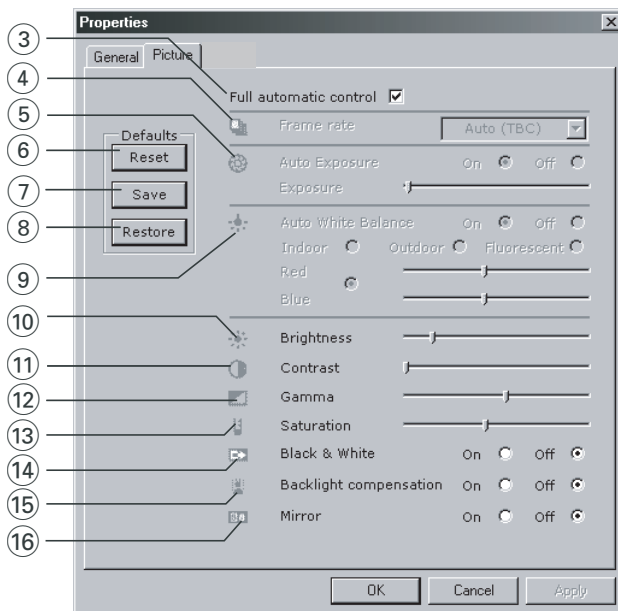
The Flickerless option should only be used under flickering light conditions (e.g. fluorescent or neon lamps) to prevent flickering or strangely coloured video images. If this option is used under normal lighting conditions the video image may be overexposed.

② Region

If you are using the Philips SPC610NC in Europe, select '50 Hz' and if you are using the Philips SPC610NC in North America, select '60 Hz'. For Asia this setting is dependent on the local mains output. E.g. for China, select '50 Hz' and for Taiwan, select '60Hz'. For Japan, the setting is region dependent.

Please check your local mains output to find the correct 'Region' setting.

Picture controls



③ Full automatic control: on/off

This full automatic control mode provides a very easy way to get the best out of your Philips SPC610NC laptop WebCam. Or you can choose to have maximum manual control over the WebCam settings by switching the full automatic control mode off. Full automatic control 'on' is the preferred setting for normal use.

Techniques active within full automatic control mode are:

- *Automatic exposure control* and automatic white balance control, to provide the best video source signal possible;
- *Automatic frame rate selection* for improved WebCam sensitivity in low light conditions.

④ Frame rate

You can use the scroll open menu to set the frame rate of the video you wish to capture. E.g. 30 fps means that the laptop camera will capture video at 30 frames per second.

⑤ **Auto Exposure & Exposure slider**

The exposure is the amount of light received by the sensor and is determined by how long the sensor is exposed to capture a snapshot or video frame. The result depends on the sensitivity of the sensor. The laptop WebCam will find the optimal setting if you select the automatic exposure option. You can use the exposure slider if you would like to set the WebCam according to your personal preferences.

⑥ **Reset**

Press this button if you would like to reset the camera settings to the default factory settings.

⑦ **Save**

Press this button if you would like to save your personal preferred settings.

⑧ **Restore**

Press this button if you would like to restore your personal preferred settings.

⑨ **Auto White Balance**

Most light sources are not 100% pure white but have a certain 'color temperature'. Normally our eyes compensate for lighting conditions with different color temperatures. If the automatic white balance is selected, the WebCam will look for a reference point which represents white. It will then calculate all other colors based on this white point and compensate the other colors accordingly, just like the human eye.

You can also select fixed settings for 'Indoor', 'Outdoor' and 'Fluorescence' conditions or use the 'Red' and 'Blue' sliders if you would like to set the WebCam according to your personal color temperature preferences.

WebCam settings

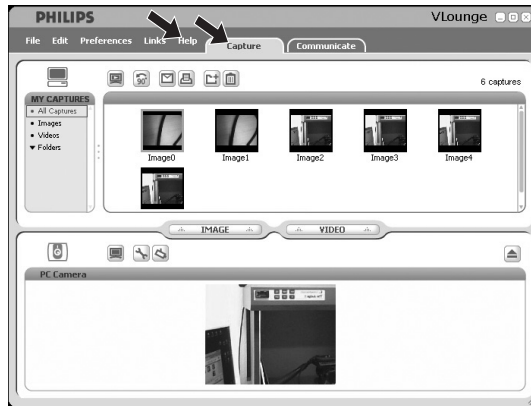
- ⑩ **Brightness**
Brightness enables you to adjust the brightness of the displayed image or video to suit your own preference. Use the slider to find your preferred setting.
- ⑪ **Contrast**
Contrast enables you to control the ratio between dark and light according to your own preference. Use the slider to find your preferred setting.
- ⑫ **Gamma**
Gamma enables you to brighten dark areas within the displayed image or video and visualize more details without over-exposing already light areas. Use the slider to find your preferred setting.
- ⑬ **Saturation**
Saturation enables you to set the colour reproduction from black and white to a full colour image or video according to your own preference. Use the slider to find your preferred setting.
- ⑭ **Black and white**
The 'Black and white' checkbox is used to switch from colour images to black and white and back.
- ⑮ **Backlight compensation**
Turn on the backlight compensation to improve the image quality when you have a scene where the background has a high illumination level (for instance when you are sitting in front of a bright light).
- ⑯ **Mirror**
Clicking the 'Mirror Image' checkbox flips the image horizontally. You can use this feature when you want to use the Philips SPC610NC and monitor as a mirror, or to take pictures of mirrored images.

VLounge

All applications can be accessed via the Philips V(ideo)-Lounge application. VLounge is the central application for easy access to your Philips WebCam and all image and video applications installed during setup.

- Start VLounge through the Windows QuickLaunch menu in your taskbar, via the program group 'SPC610NC WebCam', or by clicking the VLounge icon  on the desktop.

> The VLounge application will now be initiated and the VLounge selection screen appears.



- In the 'Capture' menu you can transfer, preview, edit, e-mail, print and organise your photos and video recordings.
- For additional support read the 'Help' documentation within the 'Help' option of the menubar of VLounge.

Skype

You can download and install Skype via the Skype website:

<http://www.skype.com>.

Please follow the on-screen instructions during downloading and installation of Skype.

Using the applications

MSN Messenger

You can download and install MSN Messenger via Microsoft MSN Messenger websites. In the list below you will find the website address for your country for downloading MSN Messenger:

Austria - <http://messenger.msn.at>
Belgium (Dutch) - <http://messenger.msn.be>
Belgium (French) - <http://messenger.fr.msn.be>
Denmark - <http://messenger.msn.dk>
Finland - <http://messenger.msn.fi>
France - <http://messenger.msn.fr>
Germany - <http://messenger.msn.de>
Italy - <http://messenger.msn.it>
The Netherlands - <http://messenger.msn.nl>
Norway - <http://messenger.msn.no>
Portugal - <http://messenger.msn.com>
Spain - <http://messenger.msn.es>
Sweden - <http://messenger.msn.se>
Switzerland (German) - <http://messenger.msn.ch>
Switzerland (French) - <http://messenger.fr.msn.ch>
United Kingdom - <http://messenger.msn.co.uk>
USA - <http://messenger.msn.com>

Please follow the on-screen instructions during downloading and installation of MSN Messenger.

Yahoo! Messenger

You can download and install Yahoo! Messenger via Yahoo! Messenger websites. In the list below you will find the website address for your country for downloading Yahoo! Messenger:

Austria - <http://messenger.yahoo.com>
Belgium - <http://messenger.yahoo.com>
Denmark - <http://dk.messenger.yahoo.com/>
Finland - <http://messenger.yahoo.com>
France - <http://fr.messenger.yahoo.com/>
Germany - <http://de.messenger.yahoo.com/>
Italy - <http://it.messenger.yahoo.com/>
The Netherlands - <http://messenger.yahoo.com>
Norway - <http://no.messenger.yahoo.com/>
Portugal - <http://messenger.yahoo.com>

Spain - <http://es.messenger.yahoo.com/>
Sweden - <http://se.messenger.yahoo.com/>
Switzerland - <http://messenger.yahoo.com>
United Kingdom - <http://uk.messenger.yahoo.com>
USA - <http://messenger.yahoo.com>

Please follow the on-screen instructions during downloading and installation of Yahoo! Messenger.

AOL Instant Messenger

You can download and install AOL Instant Messenger via the America Online website. Please find below the website address for downloading AOL Instant Messenger:

<http://www.aim.com/>

Please follow the on-screen instructions during downloading and installation of AOL Instant Messenger.

Making snapshots using Windows® XP

You can use Microsoft® Windows® XP to make snapshots with your Philips SPC610NC laptop WebCam.

If you need additional support, please refer to the 'Help' topics of Microsoft® Windows® XP. Search for 'Get picture'.

Technical specifications

| | |
|--|-------------------------------------|
| Sensor | VGA CMOS |
| Video resolution (Max.)..... | VGA (640 x 480) |
| Image resolution (Max.)..... | VGA (640 x 480) |
| Illumination | < 5 lux |
| Integrated lens | F=2.8 |
| Data format | I420, IYUV |
| Interfacing..... | USB 2.0 compatible (2.1m USB cable) |
| Power | Supplied via USB cable |
| Voltage requirements | 5V (— — —), 0.5A |
| Front light illumination distance..... | 1.5 m |

Disclaimer

Philips makes no warranty of any kind with regard to this material, including, but not limited to, the implied warranties of merchantability and fitness for a particular purpose. Philips assumes no responsibility for any error that may appear in this document. Philips makes no commitment to update nor to keep current the information contained in this document.

FCC compliance

This device complies with Part 15 of the FCC Rules.

Operation is subject to the following two conditions:

- 1 this device may not cause harmful interference, and
- 2 this device must accept any interference received, including interference that may cause undesired operation.

Note!

This equipment has been tested and found to comply with the limits for a Class B digital device, pursuant to Part 15 of the FCC Rules. These limits are designed to provide reasonable protection against harmful interference in a residential installation. This equipment generates, uses and can radiate radio frequency energy and, if not installed and used in accordance with the instructions, may cause harmful interference to radio communications. However, there is no guarantee that interference will not occur in a particular installation. If this equipment does cause harmful interference to radio or television reception, which can be determined by turning the equipment off and on, the user is encouraged to try to correct the interference by one or more of the following measures:

- Reorient or relocate the receiving antenna.
- Increase the separation between the equipment and receiver.
- Connect the equipment to an outlet on a circuit different from that to which the receiver is connected.
- Consult the dealer or an experienced radio/TV technician for help.

Any unauthorized modification to this equipment could result in the revocation of the authorization to operate the equipment.

Important information

Environmental information

Disposal of your old product

Your product is designed and manufactured with high quality materials and components, which can be recycled and reused.



When this crossed-out wheeled bin symbol is attached to a product it means the product is covered by the European Directive 2002/96/EC

Please inform yourself about the local separate collection system for electrical and electronic products.

Please act according to your local rules and do not dispose of your old products with your normal household waste. The correct disposal of your old product will help prevent potential negative consequences for the environment and human health.

WARNING

Plastic bags can be dangerous. To avoid danger of suffocation, keep this bag away from babies and small children.

System requirements

- Microsoft® Windows® 98SE/2000/ME or XP;
- Pentium® III, 500 Mhz or equivalent;
- 128MB RAM and 100 MB free hard disk space;
- One free USB port and CD-ROM or DVD drive.

Disclaimer of warranty

The software on the CD-ROM supplied is sold 'as is' and without warranties whether expressed or implied. Because of the various software and hardware environments into which this program may be put, no warranty of fitness for a particular purpose is offered.

Limitations of damages

The vendor will not be liable for any indirect, special, incidental or consequential damages (including damages for loss of business, loss of profits, or the like), whether based on breach of contract, tort (including negligence), product liability or otherwise, even if the vendor or its representatives have been advised of the possibility of such damages and even if a remedy set forth herein is found to have failed its essential purpose.

Free Manuals Download Website

<http://myh66.com>

<http://usermanuals.us>

<http://www.somanuals.com>

<http://www.4manuals.cc>

<http://www.manual-lib.com>

<http://www.404manual.com>

<http://www.luxmanual.com>

<http://aubethermostatmanual.com>

Golf course search by state

<http://golfingnear.com>

Email search by domain

<http://emailbydomain.com>

Auto manuals search

<http://auto.somanuals.com>

TV manuals search

<http://tv.somanuals.com>