

SPC650NC

---

User manual

---



**PHILIPS**

# Need help?

**Online help: <http://www.philips.com/support>**

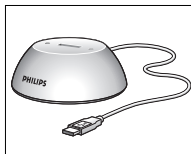
For interactive help, downloads and frequently asked questions.

# What's in the box?

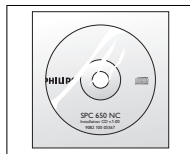
Please check that the following items are packed in the Philips SPC650NC box. They are provided to help you set up and use your Philips SPC650NC.



*Philips SPC650NC  
WebCam*



*Docking station for  
WebCam and  
USB devices*

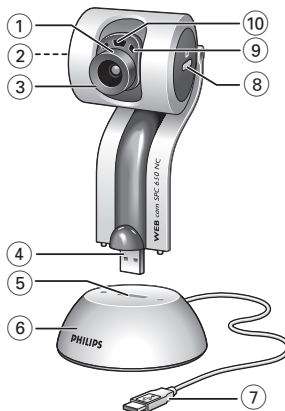


*Installation CD-ROM  
including manual*



*Quick Installation  
Guide*

# Legend of functions



- 1 Viewing angle**  
For manually changing the vertical angle of the WebCam.
- 2 Quicklaunch button**  
For quick and easy start-up of the VLounge software.
- 3 Rotating lens**  
For adjusting the focus of the image manually.
- 4 USB connector**  
For connecting the WebCam to the USB port of the docking base/stand.
- 5 USB port**  
For connecting the docking base/stand to the USB connector of the WebCam.
- 6 Docking base/stand**
  - For stable placement of the SPC650NC WebCam.
  - For connecting USB devices to your PC.
- 7 USB cable**  
For connecting the WebCam to the USB port of the PC.  
The WebCam will derive its power from the PC when a USB connection is made.
- 8 Snapshot button**  
For taking photos.
- 9 Built-in digital microphone**  
For adding sound when video chatting and recording.
- 10 Activity LED**  
Lights up when the WebCam is in use.

## **2 Need help?**

## **3 What's in the box?**

## **4 Legend of functions**

## **5 Contents**

## **6 Welcome**

## **7 Things you should know**

7 Safety precautions

7 Copyright

## **8 Installation**

8 Installing the WebCam software

10 Connecting the WebCam to your PC

## **11 WebCam settings**

11 General controls

12 Picture controls

15 Audio controls

## **16 Using the applications**

16 VLounge

16 Skype

17 MSN Messenger

18 Yahoo! Messenger

18 AOL Instant Messenger

18 Making snapshots using Windows® XP

## **19 Technical specifications**

## **20 Important information**

20 Disclaimer

20 FCC compliance

21 Environmental information

21 System requirements

21 Disclaimer of warranty

21 Limitations of damages

# Welcome

The Philips SPC650NC WebCam you have just purchased is manufactured to the highest standards and will give you years of trouble-free use. Brilliant images and blazing colors, that's what you get with the SPC650NC WebCam. Forget about installing interface cards and separate power supplies, because you don't need them any more. Power is supplied direct to the WebCam through the USB cable and the WebCam returns audio and video straight to your PC!

After installation, the new WebCam can be used for all sorts of applications, such as:

- **Video conferencing:** use the Philips SPC650NC WebCam for video chatting and conferencing (the Philips SPC650NC WebCam works with Skype, MSN Messenger, Yahoo! Messenger and AOL Messenger);
- **Video e-mail / Video capture:** create your own video presentations, video mail, product demonstrations, training videos, Internet clips etc.;
- **Snapshot images:** use images in presentations, create postcards, or send them via e-mail or on diskette. The WebCam works with all applications that use the TWAIN interface to acquire an image.
- **Editing and special effects:** after recording the images you want with the Philips SPC650NC WebCam, the images can be easily edited using image or video editing programs.

The following sections in this manual give a step-by-step description of the installation process and explain how to use the Philips SPC650NC WebCam.

Please read the following instructions carefully, and retain them for future reference. It may be helpful to have the instructions for use for the PC at hand for reference.

## Safety precautions

Observe the following guidelines to ensure that the WebCam will operate safely and to prevent defects.

- Do not use your WebCam in environments outside the following range: temperature: 0°C to 40°C, relative humidity: 45% ~ 85%.
- Do not use or store your WebCam in/under:
  - direct sunlight exposure;
  - very humid and dusty environment;
  - near any kind of heat sources.
- If your WebCam gets wet, dry it with soft cloth as soon as possible.
- If the lens is dirty, Do NOT touch the lens with your fingers.
- Clean the outside of the WebCam with a soft cloth.
- Do NOT use cleaning fluids based on alcohol, methylated spirit, ammonia, etc.
- Do NOT attempt to disassemble or repair your WebCam by yourself. Do not open the WebCam. In the event of technical difficulties return it to your Philips retailer.
- Do NOT use your WebCam in the water.
- Protect the WebCam from oil, vapour, steam, moisture, and dust.
- Never point the WebCam lens at the sun.

## Copyright

Copyright© 2003 by Philips Consumer Electronics B.V. All rights reserved. No part of this publication may be reproduced, transmitted, transcribed, stored in a retrieval system or translated into any language or computer language, in any form or by any means, electronic, mechanical, magnetic, optical, chemical, manual or otherwise, without prior written permission from Philips. Brands and product names are trademarks or registered trademarks of their respective companies.

# Installation

## Installing the WebCam software

The software supplied only works on PCs with the operating systems Microsoft® Windows® 98SE, ME, 2000 and XP.

### Notes!

- Unplug all your USB devices (except USB keyboard and USB mouse) before you start.
- Do not plug in your WebCam yet. Run the Installation CD-ROM first.
- Have your Windows® CD-ROM at hand.
- The SPC650NC WebCam is 'XP Plug & Play'. This means if you are running Windows XP and you have installed Service Pack 2 and the latest Microsoft Windows XP updates you don't need to install the SPC650NC WebCam driver. Simply plug in the WebCam and you can start using your SPC650NC WebCam.



- 1** Place the installation CD-ROM in your PC's CD-ROM / DVD drive.



> After a couple of seconds the 'Language selection' screen appears automatically.

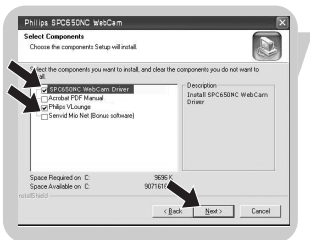
### Note!

If the 'Language selection' screen does not appear automatically, open the Microsoft® Windows® Explorer and double click on the 'Set-up.exe' icon in the CD-ROM directory.

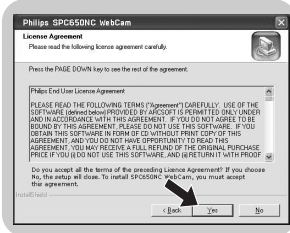
- 2** Select your language and click on the '**OK**' button.

> The following screen appears.

- 3** Select at least 'SPC650NC WebCam Driver' and 'Philips VLounge'. Click the '**Next**' button.

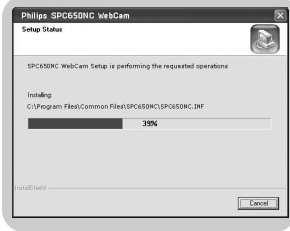






> The following software license agreement appears.

**4** Click on 'Yes' to continue the installation.




> The following screen, including a progress bar, appears.



> The following screen appears when the installation was successful.

**5** Click on 'Finish'.

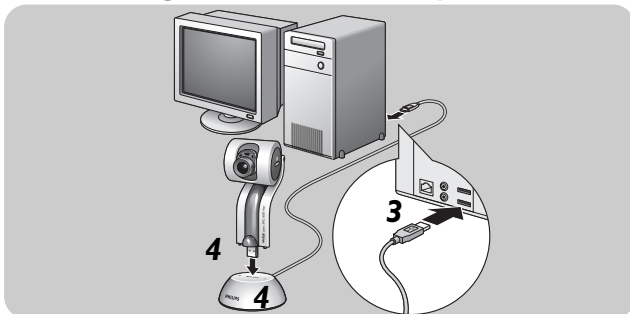
**6** Restart your PC when you have finished installing the software.

> The V(ideo)-Lounge desktop shortcut  will be installed after installation.


> Via VLounge you have access to all WebCam-related software. See 'Using the applications'.

**7** You can now connect your WebCam.

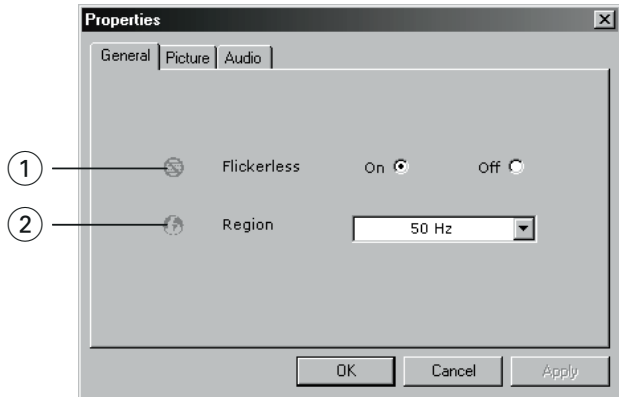
## Connecting the WebCam to your PC



- 1** Be sure to run the installation CD *first, before* connecting the WebCam to the PC.
- 2** Turn on the PC.
- 3** Connect the USB plug of the USB cable to the USB port of the PC.
- 4** Insert the WebCam's USB connector into the USB port of the docking base/stand. Push it down gently until it clicks into position.  
> *The WebCam will now derive its power from the PC.*

The Philips SPC650NC video property can be changed from within an application, or independently by clicking the VProperty icon  which can be found in the Windows taskbar bottom right of your screen. Most applications can show a 'live preview' video image on your monitor. Always use this option to see the effect of changed settings on your screen.

## General controls



### ① Flickerless

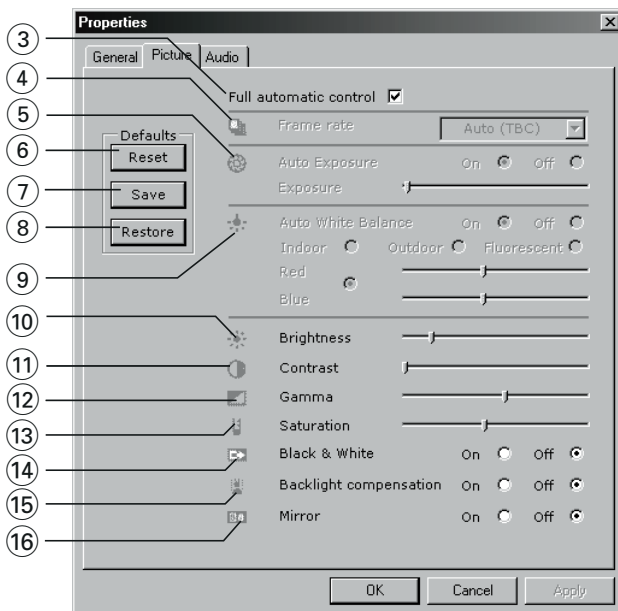
The Flickerless option should only be used under flickering light conditions (e.g. fluorescent or neon lamps) to prevent flickering or strangely colored video images. If this option is used under normal lighting conditions the video image may be overexposed.

### ② Region

If you are using the Philips SPC650NC in Europe, select '50 Hz' and if you are using the Philips SPC650NC in North America, select '60 Hz'. For Asia this setting is dependent on the local mains output. E.g. for China, select '50 Hz' and for Taiwan, select '60 Hz'. For Japan the setting is region dependent.

Please check your local mains output to find the correct 'Region' setting.

## Picture controls



### ③ Full automatic control: on/off

This full automatic control mode provides a very easy way to get the best out of your Philips SPC650NC WebCam. Or you can choose to have maximum manual control over the WebCam settings by switching the full automatic control mode off. Full automatic control 'on' is the preferred setting for normal use.

Techniques active within full automatic control mode are:

- *Automatic exposure control* and automatic white balance control, to provide the best video source signal possible;
- *Automatic frame rate selection* for improved WebCam sensitivity in low light conditions.

### ④ Frame rate

You can use the scroll open menu to set the frame rate of the video you wish to capture. E.g. 30 fps means that the WebCam will capture video at 30 frames per second.

## ⑤ **Auto Exposure & Exposure slider**

The exposure is the amount of light received by the sensor and is determined by how long the sensor is exposed to capture a snapshot or video frame. The result depends on the sensitivity of the sensor. The WebCam will find the optimal setting if you select the automatic exposure option. You can use the exposure slider if you would like to set the WebCam according to your personal preferences.

## ⑥ **Reset**

Press this button if you would like to reset the WebCam settings to the default factory settings.

## ⑦ **Save**

Press this button if you would like to save your personal preferred settings.

## ⑧ **Restore**

Press this button if you would like to restore your personal preferred settings.

## ⑨ **Auto White Balance**

Most light sources are not 100% pure white but have a certain 'color temperature'. Normally our eyes compensate for lighting conditions with different color temperatures. If the automatic white balance is selected, the WebCam will look for a reference point which represents white. It will then calculate all other colors based on this white point and compensate the other colors accordingly, just like the human eye.

You can also select fixed settings for 'Indoor', 'Outdoor' and 'Fluorescence' conditions or use the 'Red' and 'Blue' sliders if you would like to set the WebCam according to your personal color temperature preferences.

# WebCam settings

- ⑩ Brightness**  
Brightness enables you to adjust the brightness of the displayed image or video to suit your own preference. Use the slider to find your preferred setting.
- ⑪ Contrast**  
Contrast enables you to control the ratio between dark and light according to your own preference. Use the slider to find your preferred setting.
- ⑫ Gamma**  
Gamma enables you to brighten dark areas within the displayed image or video and visualize more details without over-exposing already light areas. Use the slider to find your preferred setting.
- ⑬ Saturation**  
Saturation enables you to set the color reproduction from black and white to a full color image or video according to your own preference. Use the slider to find your preferred setting.
- ⑭ Black and white**  
The 'Black and white' checkbox is used to switch from color images to black and white and back.
- ⑮ Backlight compensation**  
Turn on the backlight compensation to improve the image quality when you have a scene where the background has a high illumination level (for instance when you are sitting in front of a bright light).
- ⑯ Mirror**  
Clicking the 'Mirror Image' checkbox flips the image horizontally. You can use this feature when you want to use the Philips SPC650NC and monitor as a mirror; or to take pictures of mirrored images.

## Audio controls




### 17 Volume slider

This slider provides manual control over the microphone volume.

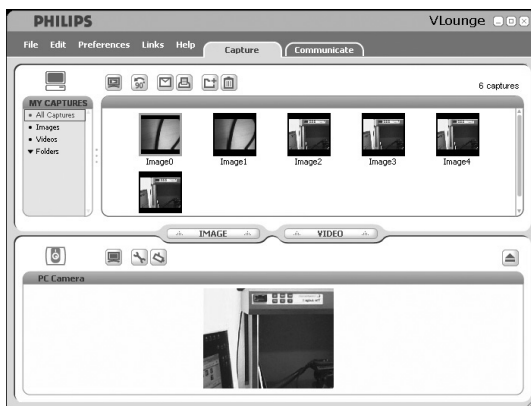
# Using the applications

## VLounge

All applications can be accessed via the Philips V(ideo)-Lounge application. VLounge is the central application for easy access to your Philips WebCam and all image and video applications installed during setup.

- **Start VLounge through the Windows QuickLaunch menu in your taskbar, via the program group 'SPC650NC WebCam', or by clicking the VLounge icon  on the desktop.**

> The VLounge application will now be initiated and the VLounge selection screen appears.



- In the 'Capture' menu you can transfer, preview, edit, e-mail, print and organise your photos and video recordings.
- For additional support read the 'Help' documentation within the 'Help' option of the menubar of VLounge.

## Skype

You can download and install Skype via the Skype website: <http://www.skype.com>.

Please follow the on-screen instructions during downloading and installation of Skype.



## MSN Messenger

You can download and install MSN Messenger via Microsoft MSN Messenger websites. In the list below you will find the website address for your country for downloading MSN Messenger:

Austria - <http://messenger.msn.at>  
Belgium (Dutch) - <http://messenger.msn.be>  
Belgium (French) - <http://messenger.fr.msn.be>  
Denmark - <http://messenger.msn.dk>  
Finland - <http://messenger.msn.fi>  
France - <http://messenger.msn.fr>  
Germany - <http://messenger.msn.de>  
Italy - <http://messenger.msn.it>  
The Netherlands - <http://messenger.msn.nl>  
Norway - <http://messenger.msn.no>  
Portugal - <http://messenger.msn.com>  
Spain: - <http://messenger.msn.es>  
Sweden - <http://messenger.msn.se>  
Switzerland (German) - <http://messenger.msn.ch>  
Switzerland (French) - <http://messenger.fr.msn.ch>  
United Kingdom - <http://messenger.msn.co.uk>  
USA - <http://messenger.msn.com>

Please follow the on-screen instructions during downloading and installation of MSN Messenger.

# Using the applications

## Yahoo! Messenger

You can download and install Yahoo! Messenger via Yahoo! Messenger websites. In the list below you will find the website address for your country for downloading Yahoo! Messenger:

Austria - <http://messenger.yahoo.com>  
Belgium - <http://messenger.yahoo.com>  
Denmark - <http://dk.messenger.yahoo.com/>  
Finland - <http://messenger.yahoo.com>  
France - <http://fr.messenger.yahoo.com/>  
Germany - <http://de.messenger.yahoo.com/>  
Italy - <http://it.messenger.yahoo.com/>  
The Netherlands - <http://messenger.yahoo.com>  
Norway - <http://no.messenger.yahoo.com/>  
Portugal - <http://messenger.yahoo.com>  
Spain - <http://es.messenger.yahoo.com/>  
Sweden - <http://se.messenger.yahoo.com/>  
Switzerland - <http://messenger.yahoo.com>  
United Kingdom - <http://uk.messenger.yahoo.com>  
USA - <http://messenger.yahoo.com>

Please follow the on-screen instructions during downloading and installation of Yahoo! Messenger.

## AOL Instant Messenger

You can download and install AOL Instant Messenger via the America Online website. Please find below the website address for downloading AOL Instant Messenger:

<http://www.aim.com/>

Please follow the on-screen instructions during downloading and installation of AOL Instant Messenger.

## Making snapshots using Windows® XP

You can use Microsoft® Windows® XP to make snapshots with your Philips SPC650NC WebCam.

If you need additional support, please refer to the 'Help' topics of Microsoft® Windows® XP. Search for 'Get picture'.

# Technical specifications

EN

Sensor .....	VGA CMOS
Video resolution (Max.).....	VGA (640 x 480)
Image resolution (Max.) .....	Super VGA (800 x 600)
Illumination .....	< 5 lux
Integrated lens .....	F=2.8
Data format .....	I420, IYUV
Interfacing .....	USB 2.0 compatible (2.1 m USB cable)
Microphone.....	Built in digital microphone
Power .....	Supplied via USB cable
Voltage requirements .....	5V (— — —), 0.5A

# Important information

## Disclaimer

Philips makes no warranty of any kind with regard to this material, including, but not limited to, the implied warranties of merchantability and fitness for a particular purpose. Philips assumes no responsibility for any error that may appear in this document. Philips makes no commitment to update nor to keep current the information contained in this document.

## FCC compliance

This device complies with Part 15 of the FCC Rules.

Operation is subject to the following two conditions:

- 1** this device may not cause harmful interference, and
- 2** this device must accept any interference received, including interference that may cause undesired operation.

## Note!

*This equipment has been tested and found to comply with the limits for a Class B digital device, pursuant to Part 15 of the FCC Rules. These limits are designed to provide reasonable protection against harmful interference in a residential installation. This equipment generates, uses and can radiate radio frequency energy and, if not installed and used in accordance with the instructions, may cause harmful interference to radio communications. However, there is no guarantee that interference will not occur in a particular installation. If this equipment does cause harmful interference to radio or television reception, which can be determined by turning the equipment off and on, the user is encouraged to try to correct the interference by one or more of the following measures:*

- *Reorient or relocate the receiving antenna.*
- *Increase the separation between the equipment and receiver.*
- *Connect the equipment to an outlet on a circuit different from that to which the receiver is connected.*
- *Consult the dealer or an experienced radio/TV technician for help.*

Any unauthorized modification to this equipment could result in the revocation of the authorization to operate the equipment.

## Environmental information

### *Disposal of your old product*

Your product is designed and manufactured with high quality materials and components, which can be recycled and reused.



When this crossed-out wheeled bin symbol is attached to a product it means the product is covered by the European Directive 2002/96/EC

Please inform yourself about the local separate collection system for electrical and electronic products.

Please act according to your local rules and do not dispose of your old products with your normal household waste. The correct disposal of your old product will help prevent potential negative consequences for the environment and human health.

### **WARNING**

Plastic bags can be dangerous. To avoid danger of suffocation, keep this bag away from babies and small children.

### **System requirements**

- Microsoft® Windows® 98SE/2000/ME or XP;
- Pentium® III, 500 Mhz or equivalent;
- 128MB RAM and 100 MB free hard disk space;
- One free USB port and CD-ROM or DVD drive.

### **Disclaimer of warranty**

The software on the CD-ROM supplied is sold 'as is' and without warranties whether expressed or implied. Because of the various software and hardware environments into which this program may be put, no warranty of fitness for a particular purpose is offered.

### **Limitations of damages**

The vendor will not be liable for any indirect, special, incidental or consequential damages (including damages for loss of business, loss of profits, or the like), whether based on breach of contract, tort (including negligence), product liability or otherwise, even if the vendor or its representatives have been advised of the possibility of such damages and even if a remedy set forth herein is found to have failed its essential purpose.

---

**www.philips.com**

Data subject to change without notice



**PHILIPS**

## Free Manuals Download Website

<http://myh66.com>

<http://usermanuals.us>

<http://www.somanuals.com>

<http://www.4manuals.cc>

<http://www.manual-lib.com>

<http://www.404manual.com>

<http://www.luxmanual.com>

<http://aubethermostatmanual.com>

Golf course search by state

<http://golfingnear.com>

Email search by domain

<http://emailbydomain.com>

Auto manuals search

<http://auto.somanuals.com>

TV manuals search

<http://tv.somanuals.com>