



Quick start guide

© Royal Philips Electronics N.V. 2009
All rights reserved.

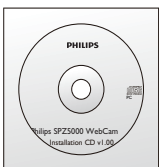
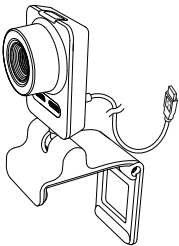
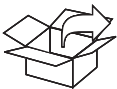
Specifications are subject to change without notice.
Trademarks are the property of Koninklijke Philips
Electronics N.V. or their respective owners.



V1.0

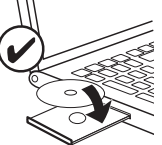
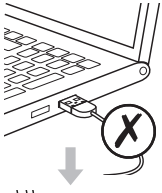
Printed in China

PHILIPS



www.philips.com/support

1



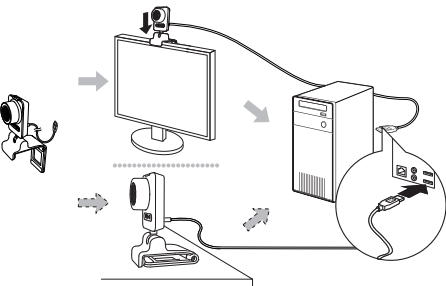
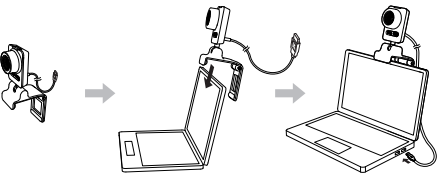
Optional:
Installation of CD-ROM (For
YouTube upload, video and
sound enhancement only)

Facultatif :
Installation du CD-ROM
(téléchargement vers YouTube,
amélioration vidéo et audio
uniquement)

Fakultativ:
Installation der CD-ROM
(Nur für YouTube Upload
sowie verbesserte Bild- und
Tonqualität)

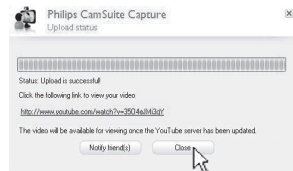
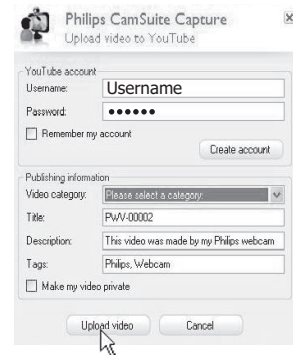
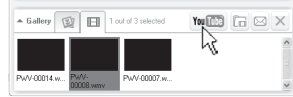
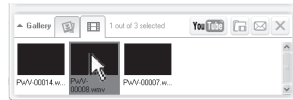
Note:
For video recording, the maximum
resolution is up to 640 x 480 (VGA).
Remarque :
Pour l'enregistrement vidéo, la résolution
maximale est de 640 x 480 (VGA).
Hinweis:
Bei Videoaufnahmen beträgt die maximale
Auflösung 640 x 480 (VGA).

2



3

YouTube™



Free Manuals Download Website

<http://myh66.com>

<http://usermanuals.us>

<http://www.somanuals.com>

<http://www.4manuals.cc>

<http://www.manual-lib.com>

<http://www.404manual.com>

<http://www.luxmanual.com>

<http://aubethermostatmanual.com>

Golf course search by state

<http://golfingnear.com>

Email search by domain

<http://emailbydomain.com>

Auto manuals search

<http://auto.somanuals.com>

TV manuals search

<http://tv.somanuals.com>