

Register your product and get support at
www.philips.com/welcome

SPZ5000



EN

User manual

PHILIPS

Contents

1	Your Webcam	2
	Welcome	2
	What's in the box	2
	Functional overview	3
2	Get started	4
	(Optional) Install the webcam software and driver	4
	Connect the webcam to your PC/notebook	5
3	Use the webcam for video chatting	6
4	Philips CamSuite	7
5	Philips CamSuite Capture	8
	Take and view a photo	8
	Record and play a video	8
	Screen mode	8
	Image resolution	9
	Gallery	9
	Photo/Video menu	9
	Open the photo/video folder	9
	Send photo(s)/video(s) via email	10
	Delete photo(s)/video(s) from the gallery	10
	Upload a video to YouTube	10
6	Features provided by Webcam Driver SPZ5000	12
	Properties	13
	General tab	13
	Video tab	14
	Audio tab	15
	Features tab	15
7	Upgrade software	17
	Software version of Philips CamSuite	17
	Download the latest software and driver on line	17
	Upgrade software via Philips Intelligent Agent	17
8	Technical specifications	18
9	Frequently asked questions (FAQ)	19
	How can I adjust image quality?	19
	The microphone of my Philips SPZ5000 webcam or headset does not work (properly).What should I do?	19
	Using my Philips SPZ5000 webcam makes my PC/notebook run slow.What should I do?	20
	No image is available on the screen.What should I do?	21
	How can I restore my Philips webcam to the default factory settings?	21
10	Service and support	22
	Need help?	22
	Information to the customer	22
	Safety precautions	22
	Copyright	22
	Disclaimer	22
	FCC compliance	23
	Compliance with Electro-Magnetic Field (EMF)	23
	Recycling	23
	Disclaimer of warranty	24
	Limitations of damages	24

1 Your Webcam

Congratulations on your purchase, and welcome to Philips! To fully benefit from the support that Philips offers, register your product at www.philips.com/welcome.

- At www.philips.com/welcome, select your language and choose Register my product. Then follow the on-screen instructions for registration.

Please read the following instructions carefully, and retain them for future reference.

Welcome

The Philips SPZ5000 webcam you have just purchased is manufactured to the highest standards and will give you years of trouble-free use. Brilliant images and amazing sound quality, that's what you get with the SPZ5000 webcam. The Philips SPZ5000 webcam can be used for all sorts of applications.

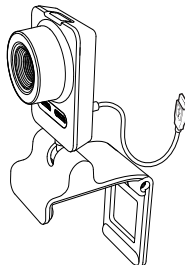
- **Video:** Use the Philips SPZ5000 webcam for video chatting. The webcam works with Skype, Windows® Live Messenger, Yahoo! Messenger, AOL Instant Messenger, QQ and other instant messagings and VoIP (Voice over Internet Protocol) services;
- **Video sharing:** Make your own personal videos and share them with friends and family via YouTube;
- **Snapshot images:** With Philips applications installed, use the snapshot button to easily take photos and share your photos via Facebook, Flickr, MySpace, and etc.;
- **Special effects:** After you install Philips CamSuite, you can enjoy some special features, such as "Fun frame", "Fun logo", and "Fun effect", provided by it.

The following sections in this manual give a step-by-step description of the installation process and explain how to use the Philips SPZ5000 webcam.

What's in the box

Please check that the following items are packed in the Philips SPZ5000 webcam box.

- Philips SPZ5000 webcam



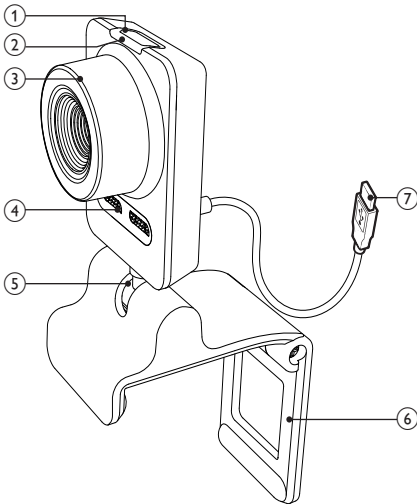
- Quick start guide



- Installation CD-ROM, including
 - User manual of the webcam
 - Webcam Driver SPZ5000
 - Philips CamSuite
 - Philips Intelligent Agent



Functional overview



- ① **Snapshot button**
 - With Philips applications installed, take photos directly
- ② **Power LED**
 - Lights up when the webcam is in use
- ③ **Focus ring**
 - Adjust the focus of the image manually
- ④ **Built-in microphone**
 - Capture voice and sound during video calling and recording
- ⑤ **Rotating joint**
 - Change the viewing field of the webcam manually
- ⑥ **Clamp with rubber rims**
 - Mount the webcam on your (flat panel) PC monitor or notebook display
 - Fold the clamp when the webcam is placed on a desk or (large) desktop monitor

⑦ USB connector

- Connect the webcam to the USB port of the notebook or desktop PC
- Supply power to the webcam when it is connected to the notebook or desktop PC

2 Get started

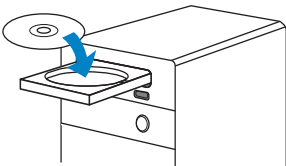
(Optional) Install the webcam software and driver

Note

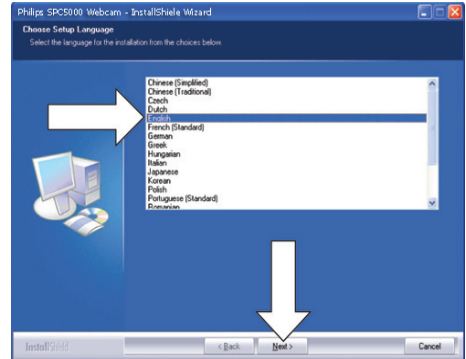
- To use the special features provided by Webcam Driver SPZ5000, Philips CamSuite, and Philips Intelligent Agent, install the software in the provided CD-ROM.
- Before the installation of Philips CamSuite, disconnect the webcam from the PC/notebook.

The software supplied only works on PCs with the operating systems Microsoft® Windows® XP (SP2 and higher), Vista, or Windows 7. After the software installation, you can adjust Philips SPZ5000 webcam settings on respective property pages.

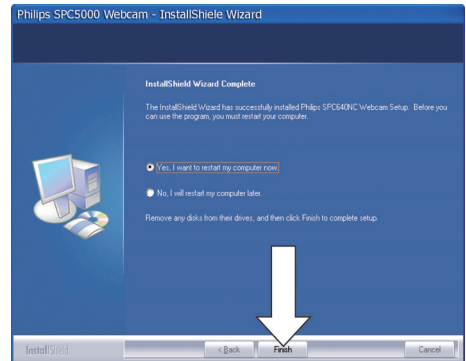
- 1 Place the installation CD-ROM into the CD-ROM/DVD drive on the PC/notebook.




- 2 When the language selection window is displayed, select your language.
 - If the language selection window is not displayed automatically, click **Start > My computer**, double-click the installation CD-ROM, and then double-click the **Setup.exe** icon.

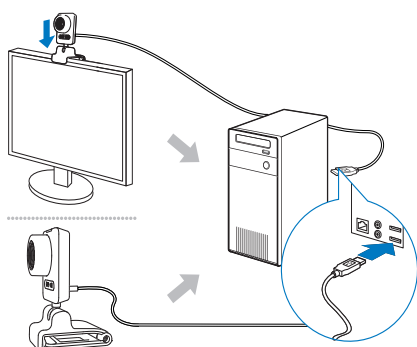


- 3 Follow instructions on the screen to continue the installation.
- 4 When the **Reboot** window is displayed, select **Yes** and then click **Finish** to restart the PC/notebook.

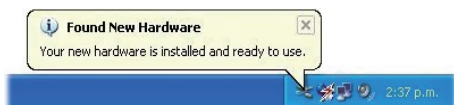


- ↳ The Philips CamSuite icon  is displayed in the Windows toolbar (at lower right of the screen).
- ↳ In the Philips CamSuite control panel, you can adjust the webcam settings.

Connect the webcam to your PC/notebook



- 1 Turn on the PC/notebook.
- 2 For the first time you use the webcam with Philips CamSuite, install the software in the provided CD-ROM.
 - ↳ After the software installation is complete, the Philips CamSuite icon is displayed at the lower right corner of the screen.
- 3 Use the clamp to mount the webcam on your PC monitor or notebook display.
 - Fold the clamp to place the webcam on a desk or (large) desktop monitor.
- 4 Connect the cable to a USB port on the PC/notebook.
 - ↳ After the webcam is properly connected, the following pop-up window is displayed at the lower right corner of the screen .



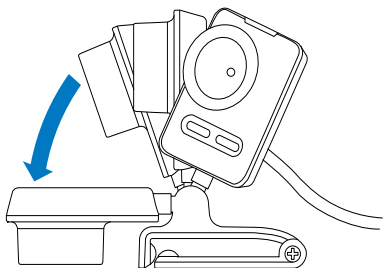
- 5 Aim the webcam in a proper angle.
 - ↳ After you launch Philips CamSuite, you can use the features provided by the application for Philips SPZ5000 webcam.

3 Use the webcam for video chatting

Philips SPZ5000 webcam works with Skype, Windows® Live Messenger, Yahoo! Messenger, AOL Instant Messenger, QQ and other instant messegings and VoIP (Voice over Internet Protocol) services.


After you install one of the above applications, you can plug the webcam into the PC/ notebook and use it for video chatting.

After use, you can fold the camera to store it.

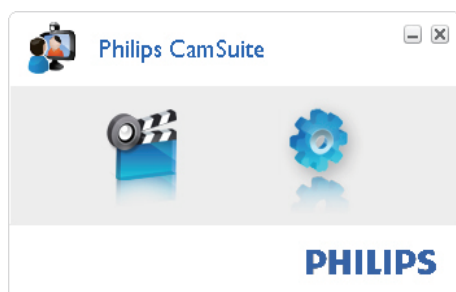



4 Philips CamSuite

Philips CamSuite provides a quick access to a number of the most used features and settings. To enjoy the special features and settings provided by Philips CamSuite, install it before using it with Philips SPZ5000 webcam.

After you install Philips CamSuite, you can double-click the Philips CamSuite icon  on the Windows toolbar to access the Philips CamSuite control panel.

- If Webcam Driver SPZ5000 is not installed, the following control panel is displayed :





- If you also have Webcam Driver SPZ5000 installed on the PC/notebook, a different interface of the Philips CamSuite control panel is displayed and a different **[Properties]** window is displayed after you click .



5 Philips CamSuite Capture


Via Philips CamSuite Capture, you have access to the following webcam features:

- Take photos
 - Record videos
 - Send photos or videos by email
 - Upload your videos to YouTube directly
 - Adjust settings for photo, video, mute, and multimedia folders
 - Know the software version of Philips CamSuite
- 1 To launch Philips CamSuite Capture, click  on the Philips CamSuite control panel or double-click  on the desktop.
 - 2 To close Philips CamSuite Capture, click the close button at the top right corner of the Philips CamSuite Capture window.

Tip

- If you are already using the webcam in another application, you will not be able to see any image in the viewer of Philips CamSuite Capture.




Take and view a photo

- 1 Aim the webcam in a proper angle.
 - 2 In the Philips CamSuite Capture window, click .
 - ↳ A photo is taken and stored in the photo gallery (also in the selected photo folder on the PC/notebook).
- To view a photo in the photo gallery, double-click it.

Record and play a video

Note

- If you select any resolution higher than 640 × 480 (VGA), the recording icon is disabled. You can select a lower resolution to enable recording.

- 1 Aim the webcam in a proper angle.
 - 2 In the Philips CamSuite Capture window, click  to start recording.
 - To pause recording, click .
 - 3 To stop recording, click .
 - ↳ A video is recorded and stored in the video gallery (also in the selected in the video folder on the PC/notebook).
- To play a video in the video gallery, double-click it.

Tip

- Before you play a video, ensure that you have a multimedia player installed on the PC/notebook.

Screen mode

Via Philips CamSuite Capture, you can view a photo or play a video in different modes:


- Normal screen mode
 - Full screen mode
 - Fit on screen
- 1 In the Philips CamSuite Capture window, click  to switch between modes, from [Normal screen mode] to [Full screen mode] / [Fit on screen] or from [Full screen mode] / [Fit on screen] to [Normal screen mode].
 - ↳ You can select [Fit on screen] or [Full screen mode] in the drop down list.



Image resolution

You can set different image resolutions for photos/videos taken via the webcam:

- 160 × 120 (SQVGA)
- 176 × 144 (QCIF)
- 320 × 240 (E-mail size)
- 352 × 288 (CIF)
- 640 × 480 (VGA)
- 1280 × 1024 (1.3MP, for photo only)
- 2560 × 2048 (for photo only)

Note





- For video recording, the maximum resolution is up to 640 × 480 (VGA).

- 1 In the Philips CamSuite Capture window, click the drop-down arrow.
↳ The provided resolution options are listed.
- 2 Select a preferred resolution option.
 - To apply another resolution setting, repeat Step 1 and Step 2.

Gallery

Photos and videos taken via the webcam are stored in the photo or video gallery and in the selected photo or video folder (multimedia folders).

To access the gallery:

- 1 In Philips CamSuite Capture, click  **Gallery** to show gallery.
- 2 Click  to show the photo gallery.
 - Click  to show the video gallery.
 - To hide the gallery, click .

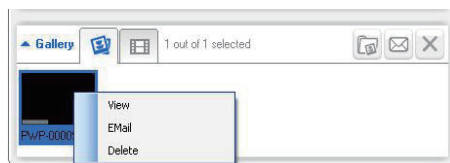
Photo/Video menu

To display the photo/video menu via right-click on the mouse:

- 1 In the photo/video gallery, select a photo/video.
- 2 Right-click the mouse.
↳ The photo/video menu is displayed.

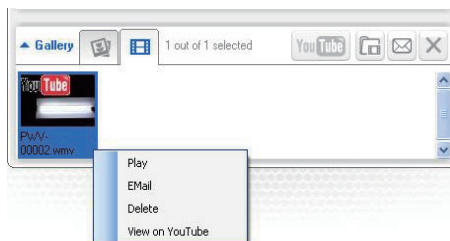
- 3 Select an option to continue.

Options on the photo menu:



- **[View]:** To view the selected photo(s)
- **[Email]:** To send the selected photo(s) via email
- **[Delete]:** To delete the selected photo(s)


Options on the video menu:




- **[Play]:** To play the selected video(s)
- **[Email]:** To send the selected video(s) via email
- **[Delete]:** To delete the selected video(s)
- **[Upload video to YouTube]:** To upload the selected video(s) to YouTube.

Open the photo/video folder


In the photo gallery:

- 1 Select a photo and then click  to open the photo folder.



In the video gallery:

- 1 Select a video and then click  to open the video folder.

Send photo(s)/video(s) via email

- 1 In the photo/video gallery, select photo(s)/video(s) that you want to send via email.
- 2 Click .
↳ An email message is displayed with the selected photo(s)/video(s) attached.
- 3 Send the email.

Delete photo(s)/video(s) from the gallery

- 1 In the photo/video gallery, select photo(s)/video(s) that you want to delete.
- 2 Click  beside .
- 3 In the pop-up window, click **[Yes]**.




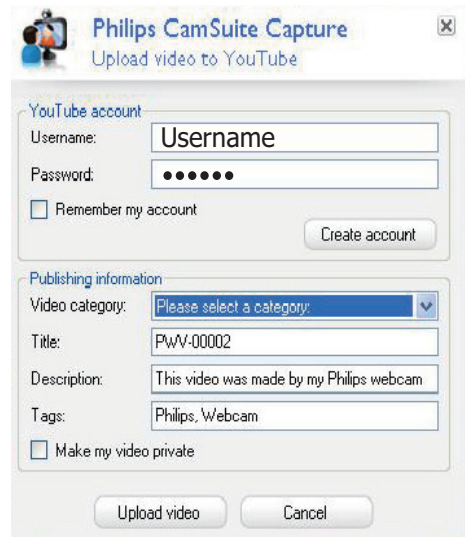
- ↳ The selected photo(s)/video(s) are deleted from the gallery.
- To cancel the deletion, click **[No]** in the pop-up window.

Upload a video to YouTube

Note

- To enjoy Instant YouTube upload feature with this webcam, you need to install Philips CamSuite in the provided CD-ROM.
- Before you upload a video to YouTube, you need to have a YouTube account and Internet access.

- 1 In the video gallery, select a video that you want to upload to YouTube.
- 2 Click .
↳ The **[Upload video to YouTube]** window is displayed.
- 3 For the first time you use this feature, follow the following steps A-C:
 - A. If you do not have a YouTube account, click **[Create account]** to create one as instructed on the YouTube website.
 - B. In the **[YouTube account]** pane, enter the **[Username:]** and **[Password:]** of your YouTube account.



- C. Check the **[Remember my account]** box.
↳ Philips CamSuite will remember the account information.

- 4 In the [Publishing information] pane, select [Video category:] in the drop-down list when applicable.

- Change information in the [Title:], [Description:], and [Tags:] boxes whenever applicable.
- To make your video on YouTube as private, check the [Make my video private] box.

- 5 Click [Upload video].
- To cancel upload, click [Cancel] during uploading.
- ↳ When uploading is successful, the following window is displayed. You can close the window or click [Notify friend(s)] to continue.

6 Features provided by Webcam Driver SPZ5000

If both Webcam Driver SPZ5000 and Philips CamSuite are installed on the PC/notebook, Philips CamSuite provides a quick access to the following features provided by Webcam Driver SPZ5000:



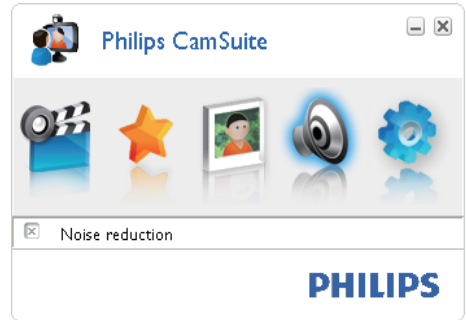
Fun settings

- Fun frame
- Fun logo
- Fun effect



Image settings

- Digital zoom
- Face tracking



Audio settings

- Noise reduction




Camera settings

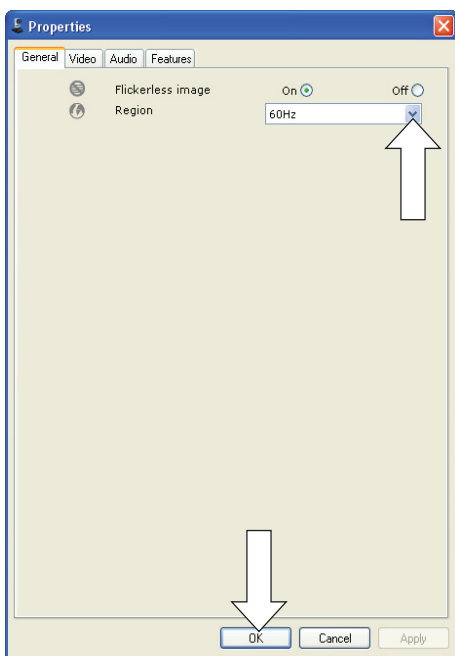
- Select an available Philips webcam
- Adjust properties

- 1 Click one of the buttons on the Philips CamSuite control panel to access a settings panel.
- 2 In each settings panel, check the boxes to activate the features.
 - To disable a feature, clear the box.For details of the features, see the "Properties" section.

Properties

- 1 In the Philips CamSuite control panel, click .
- 2 Click the **[Webcam settings]** button.
↳ The **[Properties]** window is displayed.
- 3 In the **[Properties]** window, click one of the following four tabs to go on with settings adjustment:
 - General
 - Video
 - Audio
 - Features

General tab



On the **[General]** tab, you can adjust the following settings:

[Flickerless image]

The **[Flickerless image]** option should only be used under flickering light conditions (e.g. fluorescent or neon lamps) to prevent flickering or strangely colored video images. If this option

is used under normal lighting conditions, the video image may be overexposed.

[Region]

During installation, this parameter will be set automatically to the correct region frequency. When you travel, you may need to change the setting to optimize the image quality.

The region frequency settings for different countries are listed below.

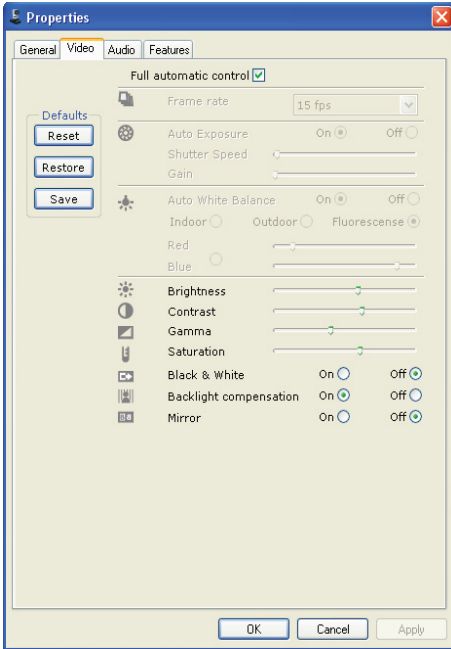
Country (region)	Region frequency
Europe	50 Hz
North America	60 Hz
China	50 Hz
Taiwan	60 Hz
Japan	Region-dependent



Tip

- Please check your local mains output to find the correct region setting.

Video tab



On the **[Video]** tab, you can now adjust the following settings:

[Full automatic control]

This full automatic control mode provides a very easy way to get the best out of your Philips SPZ5000 webcam. Or you can choose to have maximum manual control over the webcam settings by switching the full automatic control mode off. Full automatic control 'on' is the preferred setting for normal use.

Techniques active within full automatic control mode are:

- Automatic exposure control and automatic white balance control, to provide the best video source signal possible;
- Automatic frame rate selection for improved webcam sensitivity in low light conditions.

[Frame rate]

A frame is a single picture or still shot, that is shown as part of a larger video or movie. The frame rate is the number of frames displayed

per second. The higher the frame rate, the better the video display but the higher the load on the processor.

You can use the scroll open menu to set the frame rate of the video that you wish to capture. For example, 30 fps means that the webcam will capture video at 30 frames per second.

[Auto Exposure]

The exposure is the amount of light received by the sensor and is determined by how long the sensor is exposed to capture a snapshot or video frame. The result depends on the sensitivity of the sensor. The webcam will find the optimal setting if you select the automatic exposure option.

[Shutter Speed]

The shutter speed determines how long the camera shutter remains open as a picture is taken. The slower the shutter speed, the longer the exposure time. The shutter speed controls the total amount of light reaching the sensor.

Use the slider to set the desired shutter speed.

[Gain]

In video, gain is the amount of white in a video picture. Use the slider to set the desired gain level.

[Reset]

Press this button if you would like to reset the webcam settings to the default factory settings.

[Restore]

Press this button if you would like to restore your preferred settings.

[Save]

Press this button if you would like to save your preferred settings.

[Auto White Balance]

Most light sources are not 100% pure white but have a certain 'color temperature'. Normally our eyes compensate for lighting conditions with different color temperatures. If the automatic white balance is selected, the webcam will look for a reference point which represents white. It will then calculate

all other colors based on this white point and compensate the other colors accordingly, just like the human eye.

You can also select fixed settings for **[Indoor]**, **[Outdoor]** and **[Fluorescence]** conditions or use the 'Red' and 'Blue' effect if you would like to set the webcam according to your color temperature preferences.

[Brightness]

Brightness enables you to adjust the brightness of the displayed image or video to suit your own preference. Use the slider to find your preferred setting.

[Contrast]

Contrast enables you to control the ratio between dark and light according to your own preference. Use the slider to find your preferred setting.

[Gamma]

Gamma enables you to brighten dark areas within the displayed image or video and visualize more details without over-exposing already light areas. Use the slider to find your preferred setting.

[Saturation]

Saturation enables you to set the color reproduction from black and white to a full color image or video according to your own preference. Use the slider to find your preferred setting.

[Black & White]

The **[Black & White]** checkbox is used to switch from color images to black and white or bring back the color.

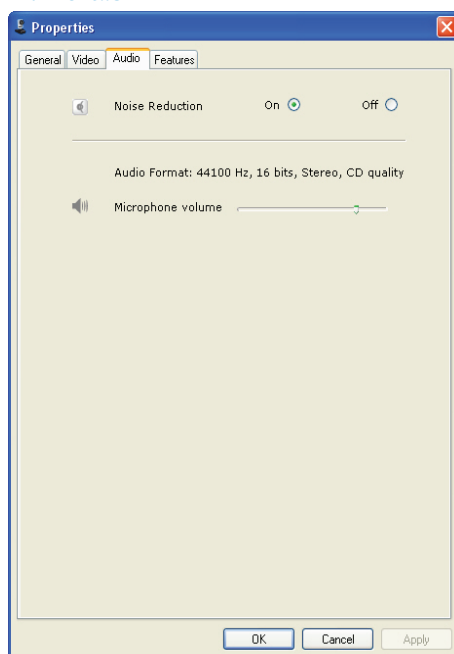
[Backlight compensation]

Turn on the backlight compensation to improve the image quality when you have a scene where the background has a high illumination level (for instance when you are sitting in front of a bright light).

[Mirror]

When you enable this function, the image flips horizontally. You can use this feature when you want to use the Philips SPZ5000 and monitor as a mirror, or to take pictures of mirrored images.

Audio tab



On the **[Audio]** tab, you can now adjust the following settings:

[Noise Reduction]

With this function, you can significantly reduce all stationary noises picked up by the webcam's microphone, such as air conditioner noise and the noise made by the fan inside your computer. It enhances clarity of speech in both quiet and noisy environments.

Volume slider

This slider provides manual control over the microphone.

Features tab

On the **[Features]** tab, you can now adjust the following settings:

[Face tracking]

If you activate the **[Face tracking]** option, the webcam will track your face. This gives you more convenience during video chatting, because you stay in the centre of the image even if you move during video chatting.

[Digital Zoom]

With this function, you can get a closer view of an object.

- 1 Use the slider to dynamically zoom in and out.



- Digital zoom magnifies the pixels but not the actual image.

[Add Logo] ([Fun logo])

With this function, you can add fun logos to the images. You can add one of the provided logos or one of your own logos (pictures).

- 1 Check the box of the **[Add Logo]** feature.
- 2 Select one of the provided logos from the drop-down list.
 - To select one of your own logos, click the **[Browse]** button and follow the on-screen instructions to finish the selection.
- 3 Click one of the four click-button on the four corners of the logo to select a logo placement.
- 4 Move the slide to adjust the logo size.

[Video Frames] ([Fun frame])

With this function, you can add fun frames to the images.

- 1 Check the box of the **[Video Frames]** feature.
- 2 Select one of the provided frames from the drop-down list.

[Video Effects] ([Fun effect])

With this function, you can select one of the provided video effects.

- 1 Check the box of the **[Video Effects]** feature.
- 2 Select one of the provided effects from the drop-down list.

7 Upgrade software

Software version of Philips CamSuite

To know the software version of Philips CamSuite:

- 1 In the Philips CamSuite Capture window, click **[Help]** > **[About]**.
 - ↳ The software version of Philips CamSuite is displayed.

Download the latest software and driver on line

- 1 At www.philips.com/support, click the **Choose country / language** box to select your country/language.
- 2 Click the **Search** box, enter **SPZ5000** and click the search button.
- 3 Click **SPZ5000** under the search results.
- 4 Click **Support**.
 - ↳ Under **Product support**, you will find information about **Software and drivers**.
- 5 Download the software or driver installer that you want.
- 6 Run the installer and follow the instructions on the screen to complete the installation.

Upgrade software via Philips Intelligent Agent



Note

- Ensure that you select Philips Intelligent Agent during software installation.

Philips Intelligent Agent has its own HTTP download manager for retrieving software from the Philips server. If an update is available for Philips SPZ5000 webcam, Philips Intelligent Agent provides a download button for the appropriate update. After clicking the download button, you can download the appropriate update that will be automatically saved in a dedicated folder located at **My Documents\Philips Intelligent Agent**.

You can also enable an automatic check that will periodically verify if the software of Philips SPZ5000 webcam products are still up-to-date.

8 Technical specifications

Sensor resolution	1.3 MP (1280 × 1024 pixels)
Video capture resolution (Max.)	2.0 MP (Software enhanced, with Philips CamSuite installed)
Photo resolution (Max.)	5.0 MP (Software enhanced, with Philips CamSuite installed); 8.0 MP (Software enhanced, with Philips CamSuite and Webcam Driver SPZ5000 installed)
Frames per second	60 fps Max. @VGA
Lens F-number	F2.6
Lens angle of view	80 degrees (wide-angle lens)
Minimum subject illumination	< 5 lux
Video format	YUY2, RGB24 and I420 (With Webcam Driver SPZ5000 installed)
Microphone	Built-in microphone with audio enhancement
Windows® OS	Windows® 7 compliant
USB interface	USB 2.0 High speed
USB video class	UVC compliant
USB cable length	1.5 m
Power	Supplied via USB cable; 5V DC, 0.15A

- OS: Windows XP SP2, Vista and Windows 7
- 200 MB of available hard disk space
- One free USB2.0 port
- Soundcard and speakers (OS-compatible)
- 16-bits Color display @ 800x600 with DirectX 3D support
- DirectX 9.0c or higher
- Microsoft .Net Framework 2.0
- Broadband Internet connection to download drivers, CamSuite, manuals and to upload YouTube files
- Adobe reader to read *PDF files

- Recommended system requirements:
 - 2.4 GHz dual core or equivalent
 - 1 GB RAM (32Bit) / 2GB RAM (64Bit) for XP, Vista, and Windows 7
 - DirectX 9.0c or higher
 - Microsoft .Net Framework 2.0.
 - Broadband Internet connection to upload files to YouTube
 - Adobe reader to read *PDF files

Recommended system requirements for an Apple Mac:

- Mac OS X v10.4 'Tiger' - 10.5 'Leopard'
- 200 MB of available hard disk space
- USB port 2.0

Note

- This webcam works with Mac OS X as plug-and-chat device.
- The software for video and sound enhancement is only compatible with Windows XP and later versions.

System requirements for a Microsoft Windows-based PC:

- Minimum system requirements:
 - 1.6 GHz or equivalent
 - 512 MB RAM for XP,
 - 1 GB RAM (32Bit) for Windows Vista and Windows 7

9 Frequently asked questions (FAQ)

How can I adjust image quality?

The default settings of the Philips webcam usually offer the best possible image quality. You can also adjust image quality according to your own personal preferences.

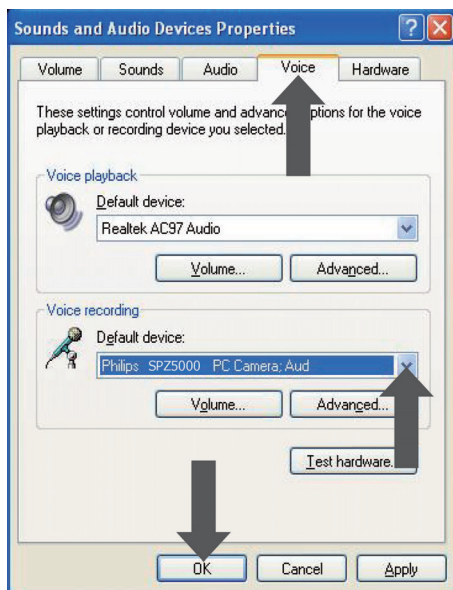
- To adjust the image resolution, see the “Image resolution” section.
- To adjust other properties of image, see the “Properties” section.

The microphone of my Philips SPZ5000 webcam or headset does not work (properly). What should I do?

For Windows XP (SP2):

- 1 On the PC/notebook, click **Start > Control panel**.
- 2 Click **Sounds and Audio Devices**.

- 3 Click the **Voice** tab in the displayed window.

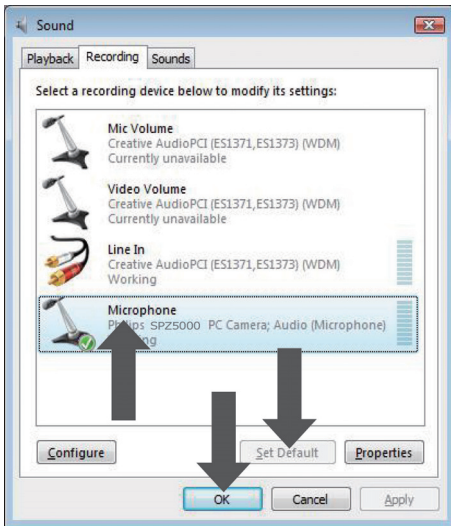


- 4 Set the Philips SPZ5000 webcam or the connected headset as default device for **Voice recording**.
- 5 Click **OK** to save your settings.

For Windows Vista:

- 1 On the PC/notebook, click **Start > Control panel**.
- 2 Click **Hardware and Sound**.
- 3 Click **Sound**.

- 4 Click the **Recording** tab in the displayed window.



- 5 Select the Philips SPZ5000 webcam or the connected headset and click **Set Default**.
- 6 Click **OK** to save your settings.



For Windows 7:

- 1 On the PC/notebook, click **Start > Control panel**.
- 2 Click **Hardware and Sound**.
- 3 Click **Sound > Manage audio device**.
- 4 Click the **Recording** tab in the displayed window.
- 5 Select the Philips SPZ5000 webcam or the connected headset and click **Set Default**.
- 6 Click **OK** to save your settings.

Using my Philips SPZ5000 webcam makes my PC/notebook run slow. What should I do?

Note

- Ensure that both Webcam Driver SPZ5000 and Philips CamSuite are installed on the PC/notebook.

- 1 Close software applications that do not necessarily need to run.
- 2 Double-click the Philips CamSuite icon  on the Windows toolbar (at the lower right of your screen) to open the Philips CamSuite control panel.
- 3 Click  on the Philips CamSuite control panel, to open the **[Properties]** page.
↳ The **[Properties]** window is displayed.
- 4 Click the **[Video]** tab.
- 5 If the **[Full automatic control]** feature is activated, clear the box to disable the **[Full automatic control]** feature.
- 6 Set **[Frame rate]** to a minimum of 5 fps.
- 7 Click **[Ok]** to save your settings.

Tip

- The maximum frame rate (frames per second (fps) produced by the webcam) and the maximum image resolution depend on the specifications of your PC/notebook. With the 'Full automatic control' feature, the webcam software will automatically adjust frame rate and resolution as good as possible for your particular situation. It might be possible that the specifications of your PC/notebook do not meet the requirements for maximum frame rate and resolution setting.

No image is available on the screen. What should I do?

- 1 Ensure that the webcam is connected properly.
- 2 Check whether you are using the webcam in another application.
- 3 Close the other application.



Tip



- You cannot use the webcam in more than one application at the same time.

How can I restore my Philips webcam to the default factory settings?



Note

- Ensure that Webcam Driver SPZ5000 and Philips CamSuite are installed on the PC/notebook.

- 1 Double-click the Philips CamSuite icon  on the Windows toolbar (at the lower right of your screen) to open the Philips CamSuite control panel.
- 2 Click  on the Philips CamSuite control panel, to open the **[Properties]** page.
↳ The **[Properties]** window is displayed.
- 3 Click the **[Video]** tab.
- 4 Click the **[Reset]** button.
↳ All webcam settings are now reset back to the default factory settings.
- 5 Click **[Ok]** to save the settings.

10 Service and support

Need help?

First of all, read this user manual carefully. The model number of your product is SPZ5000. When you need further support about registration, setup, usage, features, software upgrade, specification, and warranty, etc. of the product, see www.philips.com/support.

- 1 At www.philips.com/support, click the **Choose country / language** box to select your country/language.
- 2 Click the **Search** box, enter **SPZ5000** and click the **Search** button.
- 3 Click **SPZ5000** under the search results.
- 4 Click **Support**.
 - ↳ Under **Product support**, you will find information about **Overview, Latest updates, Manuals and documentation, Frequently asked questions, Production information, Product registration**.
 - ↳ Under **Service information**, you will find information on warranty.
 - ↳ Under **Contact**, you will find telephone numbers of Philips Consumer Care helpdesk.

Information to the customer

Safety precautions

Observe the following guidelines to ensure that the webcam will operate safely and to prevent defects.

- Do not use your webcam in environments outside the following range: temperature: 0°C to 40°C, relative humidity: 45% ~ 85%.

- Do not use or store your webcam in/under:
 - direct sunlight exposure;
 - very humid and dusty environment;
 - near any kind of heat sources.
- If your webcam gets wet, dry it with soft cloth as soon as possible.
- If the lens is dirty, do NOT touch the lens with your fingers.
- Clean the outside of the webcam with a soft cloth.
- Do NOT use cleaning fluids based on alcohol, methylated spirit, ammonia, etc.
- Do NOT attempt to disassemble or repair your webcam by yourself. Do not open the webcam. In the event of technical difficulties return it to your Philips retailer.
- Do NOT use your webcam in the water.
- Protect the webcam from oil, vapour, steam, moisture, and dust.
- Never point the webcam lens at the sun.

Copyright

Copyright © 2009 by Philips Consumer Lifestyle B.V.

All rights reserved. No part of this publication may be reproduced, transmitted, transcribed, stored in a retrieval system or translated into any language or computer language, in any form or by any means, electronic, mechanical, magnetic, optical, chemical, manual or otherwise, without prior written permission from Philips. Brands and product names are trademarks or registered trademarks of their respective companies.

Disclaimer

Philips makes no warranty of any kind with regard to this material, including, but not limited to, the implied warranties of merchantability and fitness for a particular purpose. Philips assumes no responsibility for any error that may appear in this document. Philips makes no commitment to update nor to keep current the information contained in this document.

FCC compliance

This device complies with Part 15 of the FCC Rules.

Operation is subject to the following two conditions:

- ① **this device may not cause harmful interference, and**
- ② **this device must accept any interference received, including interference that may cause undesired operation.**

Note

- This equipment has been tested and found to comply with the limits for a Class B digital device, pursuant to Part 15 of the FCC Rules.
- These limits are designed to provide reasonable protection against harmful interference in a residential installation.

This equipment generates, uses and can radiate radio frequency energy and, if not installed and used in accordance with the instructions, may cause harmful interference to radio communications.

However, there is no guarantee that interference will not occur in a particular installation.

If this equipment does cause harmful interference to radio or television reception, which can be determined by turning the equipment off and on, the user is encouraged to try to correct the interference by one or more of the following measures:

- Reorient or relocate the receiving antenna.
- Increase the separation between the equipment and receiver.
- Connect the equipment to an outlet on a circuit different from that to which the receiver is connected.
- Consult the dealer or an experienced radio/TV technician for help.

Any unauthorized modification to this equipment could result in the revocation of the authorization to operate the equipment.

Compliance with Electro-Magnetic Field (EMF)

Koninklijke Philips Electronics N.V. manufactures and sells many products targeted at consumers, which, like any electronic apparatus, in general have the ability to emit and receive electromagnetic signals.

One of Philips' leading Business Principles is to take all necessary health and safety measures for our products, to comply with all applicable legal requirements and to stay well within the EMF standards applicable at the time of producing the products.

Philips is committed to develop, produce and market products that cause no adverse health effects. Philips confirms that if its products are handled properly for their intended use, they are safe to use according to scientific evidence available today.

Philips plays an active role in the development of international EMF and safety standards, enabling Philips to anticipate further developments in standardisation for early integration in its products.

Recycling



Your product is designed and manufactured with high quality materials and components, which can be recycled and reused. When you see the crossed-out wheel bin symbol attached to a product, it means the product is covered by the European Directive 2002/96/EC:



Never dispose of your product with other household waste. Please inform yourself about the local rules on the separate collection of electrical and electronic products. The correct disposal of your old product helps prevent

potentially negative consequences on the environment and human health.

All redundant packing material has been omitted. We have done our utmost to make the packaging easily separable into mono materials.

Please observe the local regulations regarding the disposal of packing materials.



Warning

- Plastic bags can be dangerous. To avoid danger of suffocation, keep this bag away from babies and small children.

Disclaimer of warranty

The software on the CD-ROM supplied is sold 'as is' and without warranties whether expressed or implied. Because of the various software and hardware environments into which this program may be put, no warranty of fitness for a particular purpose is offered.

Limitations of damages

The vendor will not be liable for any indirect, special, incidental or consequential damages (including damages for loss of business, loss of profits, or the like), whether based on breach of contract, tort (including negligence), product liability or otherwise, even if the vendor or its representatives have been advised of the possibility of such damages and even if a remedy set forth herein is found to have failed its essential purpose.



© 2010 Koninklijke Philips Electronics N.V.

All rights reserved.

UM_V1.2

Free Manuals Download Website

<http://myh66.com>

<http://usermanuals.us>

<http://www.somanuals.com>

<http://www.4manuals.cc>

<http://www.manual-lib.com>

<http://www.404manual.com>

<http://www.luxmanual.com>

<http://aubethermostatmanual.com>

Golf course search by state

<http://golfingnear.com>

Email search by domain

<http://emailbydomain.com>

Auto manuals search

<http://auto.somanuals.com>

TV manuals search

<http://tv.somanuals.com>