

# Quick Start Guide



Model name: SPF3010C/G7


Four easy steps to  
immediately start using your  
new Philips Digital PhotoFrame

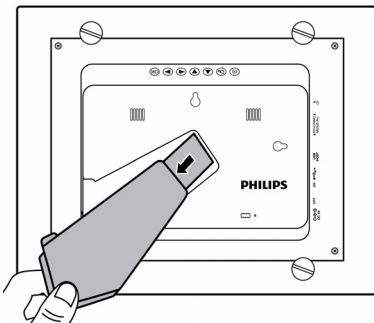
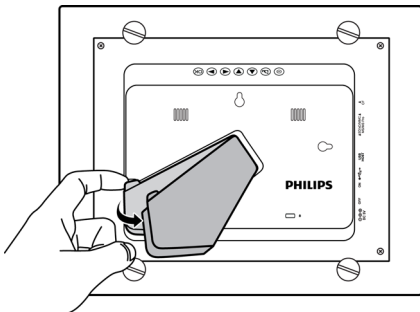
Please refer to your User Manual for more detailed instructions.  
For technical support go to [www.philips.com/support](http://www.philips.com/support) or call toll  
free 1-877-784-0999

# PHILIPS

# 1 Using the foot stand

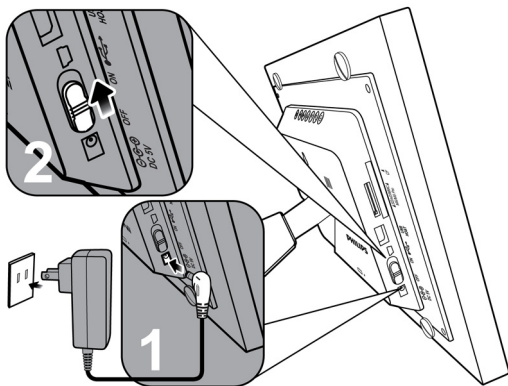
Pop out the back stand as shown and adjust the length of the back stand so the PhotoFrame can stand up right.

 Actual product appearance may vary from the illustrations shown in this Quick Start Guide.



## 2 Connecting to power

1. Place your PhotoFrame on a flat surface.
2. Connect the power adapter as below (1) and slide the power switch to the "ON" position (2).



- **Power systems and plug types may vary depending on your country/region. Before use, make sure if the power adapter supports your local voltage.**
- **To turn off the PhotoFrame, slide the power switch to the "OFF" position.**

### 3 Inserting a memory card

Your Philips Digital PhotoFrame comes with a preloaded Video Library that has 3 video clips, Monterey Bay Aquarium Jellies, Warm Hearth and Forest Waterfall. Upon turning on the PhotoFrame, playback of the preloaded videos starts with no memory card inserted.

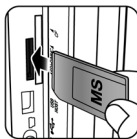
To play back your own picture or music files, insert a picture/music loaded memory card or USB flash drive into the corresponding slot on the PhotoFrame as illustrated below.



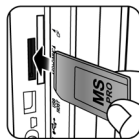
SD / SDHC



MultiMediaCard



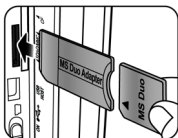
Memory Stick



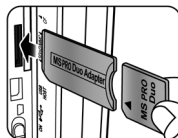
Memory Stick  
PRO



xD-Picture  
Card




Memory Stick  
Duo



Memory Stick  
PRO Duo



CompactFlash  
Card

 The PhotoFrame accepts the following memory card formats: SD™ / SDHC™, MultiMediaCard™ (MMC), Memory Stick™ (MS), Memory Stick PRO™ (MS PRO), xD-Picture Card™ (xD) and CompactFlash® Card (CF). For details, refer to the User Manual.

## 4 Using the control buttons

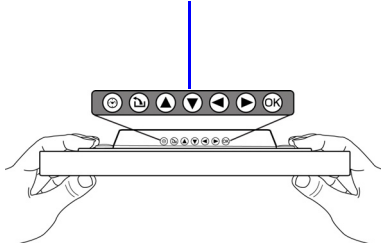
After turning on the PhotoFrame, you can use the control buttons on the back to operate the PhotoFrame.

1. Press any control button to bring up the On-Screen Display (OSD) toolbar.
2. Press the control button corresponding to the icon shown on the screen as by its function or in its order.

Mapping On-Screen Display toolbar



Control buttons on the back of the PhotoFrame



- You can also use the supplied remote control to operate the PhotoFrame. For details, refer to the User Manual.
- To toggle among Photo, Music, Video Library, Collage, Calendar, File, Source and Setup modes, press ◀ / ▶ in the main menu.
- Available functions vary depending on the currently selected mode and/or screen.
- The OSD toolbar hides automatically when the PhotoFrame is idle. You can press any button to bring up the toolbar.
- To erase the videos from the PhotoFrame will permanently remove the videos as well as the Video Library mode from the main menu. Please consider carefully before doing so because once deleted there is no way to retrieve the video. This PhotoFrame only supports the preloaded videos and does not support any other video.



©2009 Koninklijke Philips N.V.  
All rights reserved.

P/N: 4J.0SW17.001

English

Download from [Www.Somanuals.com](http://Www.Somanuals.com). All Manuals Search And Download.

## Free Manuals Download Website

<http://myh66.com>

<http://usermanuals.us>

<http://www.somanuals.com>

<http://www.4manuals.cc>

<http://www.manual-lib.com>

<http://www.404manual.com>

<http://www.luxmanual.com>

<http://aubethermostatmanual.com>

Golf course search by state

<http://golfingnear.com>

Email search by domain

<http://emailbydomain.com>

Auto manuals search

<http://auto.somanuals.com>

TV manuals search

<http://tv.somanuals.com>