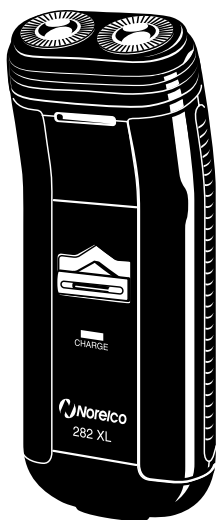


## Rota 2

*Doubleheader 282XL  
Rechargeable  
Cord/Cordless Razor*



*Rota-Action Shaving System*

## IMPORTANT SAFETY INSTRUCTIONS

When using an electric razor, basic precautions should always be followed, including the following:

Read all instructions before using this appliance.

### DANGER

To reduce the risk of electric shock:

1. Do not reach for a razor that has fallen into water. Unplug immediately.
2. Do not use while bathing or in a shower.
3. Do not place or store razor where it can fall or be pulled into a tub or sink. Do not place in or drop into water or other liquid.
4. Always unplug this razor from the electrical outlet immediately after using, except when razor is (re)charging.
5. Unplug this razor before cleaning.
6. When discarding razor, unplug razor and remove rechargeable batteries. See enclosed sheet for instructions.

### WARNING

To reduce the risk of burns, fire, electric shock, or injury to persons:

1. Close supervision is necessary when this razor is used by, on, or near children or invalids.
2. Use this razor for its intended household use as described in this manual. Do not

use attachments not recommended by Philips Electronics North America Corporation.

3. Never operate this razor if it has a damaged cord or plug, if it is not working properly, if it has been dropped or damaged, or dropped into water. Return the razor to an Authorized Norelco Service Location for examination and repair.
4. Keep the cord away from heated surfaces.
5. Never drop or insert any object into any opening.
6. Do not charge or plug in the razor outdoors or operate where aerosol (spray) products are being used or where oxygen is being administered.
7. Do not use this razor with a damaged or broken comb, as facial injury may occur.
8. Always attach plug to razor first, then to outlet. Be certain that plug is inserted firmly into razor up to mark indicated on plug. To disconnect, turn ON/OFF switch to "OFF" position (switch is down), then remove plug from outlet.
9. To prevent possible damage to the cord, do not wrap cord around the razor.
10. Never put razor in direct sunlight or store in pouch at a temperature above 140°F.

## SAVE THESE INSTRUCTIONS

**IMPORTANT:** Your razor contains NICKEL-CADMIUM RECHARGEABLE BATTERIES. See enclosed instruction sheet for battery disposal information.

## GETTING TO KNOW YOUR RAZOR

Easy-To-Clean Razor Head Assembly

Protective Razor Head Assembly Guard

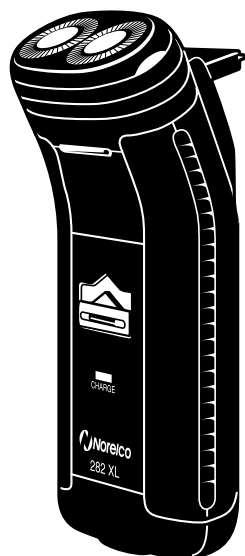
Razor Head Release Button

Built-In Charger

Locking On/Off Switch

Charge Indicator

Attractive pouch for storage



- Pop-Out Trimmer for beards, moustaches and sideburns
- Hair chamber captures shaven hair
- Rechargeable - shaves with or without cord
- Automatic Universal Worldwide Voltage
- Compact, lightweight design
- 60-Day Manufacturer Money-Back Guarantee
- Full 2-Year Warranty

## IMPORTANT

### Invest a month for the shave of a lifetime!

Use your razor exclusively for 3 to 4 weeks, or a bit longer for sensitive skin, to fully appreciate the close and comfortable Norelco shave.\*

At first, you may not get as close a shave as you expect, or your skin may become slightly irritated. This is normal and with time, your skin and beard will adjust.

Soon, your Norelco razor will be giving you the shave of a lifetime. If you are not completely satisfied within 60 days, we will refund your money.

**\* If you alternate shaving methods during the adjustment period, it may be difficult to adapt to the Norelco shaving system.**

- For assistance or the Authorized Norelco Service Location nearest you, call toll free:

**1-800-243-3050**

or contact one of the Norelco Service Stores listed below:

### ■ Norelco Service Stores

**Atlanta, GA 30309**  
2221 Peachtree Road, N.E.  
Suite A  
(404) 352-5735

**Roselle, IL 60172**  
440 North Medinah  
(708) 307-3008

**Fullerton, CA 92631**  
2100 East Valencia Drive  
Suite A-1  
(714) 447-5332

**San Francisco, CA 94105**  
566 Mission Street  
(415) 227-0225

**New York, NY 10017**  
103 East 41st Street  
(212) 687-0718

## 1. VOLTAGE

In North America, Central America, and South America, the most common voltage is between 110V and 130V AC. When traveling to other countries, common voltage may range to 240V AC. Your new razor will automatically convert internally to work on 100V to 240V AC systems.

An adaptor plug may be necessary for cord usage in foreign countries. It is suggested that you take all adaptor plugs with you when traveling overseas to ensure compatibility with most foreign outlet configurations.

Norelco Travel Adaptor Plug Kit, model TP5, may be purchased at a store near you or at a Norelco Service Store.

## 2A. TO CHARGE

1. Be certain your razor is OFF.

■ **First time charging requires a full 8 hours.** For first time or initial charge, Green Charge Indicator Light will light to indicate razor is (re)charging. For proper use, charge razor for the full 8 hours as directed. A fully charged razor will give approximately 2 weeks of 3 minute shaves per day.

2. Use only the cord provided.

3. Connect cord to razor and plug into outlet.

■ (Re)charge at temperatures between 40°F and 95°F. Charging at lower or higher temperatures adversely affects lifetime of batteries.

■ (Re)charging longer than required period of time will not harm razor. However, continuously charging razor will reduce life of batteries.

## 2B. TO RECHARGE

■ After initial 8 hour charge, recharging will take only 1 hour to (re)charge batteries to full capacity.

## 2C. FAST 5-MINUTE QUICK CHARGE

■ When battery is totally depleted, recharging for 5 minutes gives enough energy for one 3-5 minute cordless shave.

■ If razor has not been used for at least a month, razor must be recharged for a full 8 hours (see Section 2A. TO CHARGE).

## 3. CORD/CORDLESS SHAVING

Start with a clean, dry face. You may choose to use a pre-shave lotion to set your beard up for a close, smooth, comfortable shave, especially if you are using an electric razor for the first time.

**CAUTION:** It is recommended that you wash and dry your hands to remove any remaining lotion before handling your razor. Some lotions may cause damage to the exterior finish of your razor housing. In addition, clean razor heads more frequently to prevent pre-shave lotion build-up.

### A. CORD

1. Be certain razor is in OFF position.
2. Connect cord provided to razor.
3. Remove Protective Razor Head Assembly Guard.
4. Plug into 100V to 240V AC outlet.
5. Slide ON/OFF switch ON. Begin shaving.

■ Even when cord shaving, if battery is low, wait a few seconds for razor to go ON.

6. Shave against direction of beard growth using a quick, small, circular motion.

7. Keep skin taut using your fingers to stretch skin so blades can cut whiskers off.

8. Easy does it. Gently press razor to your skin so floating heads can follow the contours of your face.

9. Turn razor OFF and unplug.

■ It is not recommended that this razor be used exclusively as a corded razor. Continual use as a corded razor as well as continuously recharging razor will reduce life of batteries.

**NOTE:** Razor does not recharge during shaving.

### B. CORDLESS

1. Charge according to directions.
2. Slide ON/OFF switch ON. Begin shaving.

## 4. POP-OUT SIDEBURN, BEARD AND MOUSTACHE TRIMMER

1. Push Trimmer Slide Switch up to pop out trimmer and turn razor ON.

2. Hold trimmer, as shown, to exact hairline desired. Move trimmer downward with gentle pressure (Fig. 1).

3. Turn razor OFF and brush out trimmer section using long bristles of brush.

4. Close trimmer by pushing Trimmer Slide Switch down.

■ Lubricate trimmer teeth twice a year with Norelco Razor Lubricant, model AL80, or one drop of light machine oil.



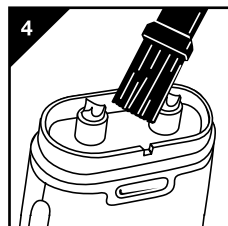
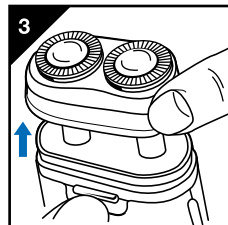
## 5. MAINTENANCE INSTRUCTIONS

### IMPORTANT

- Always switch razor OFF and remove plug from outlet before cleaning.
- Always store razor with Protective Plastic Head Guard on Razor Head Assembly.
- Never clean, remove or replace head assembly while motor is ON.
- Do not apply pressure to combs. Do not touch razor heads with hard objects as this may dent or damage precision-made slotted combs.
- Do not use razor if combs are damaged or broken.

### 5A. ONCE A WEEK

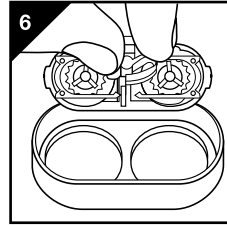
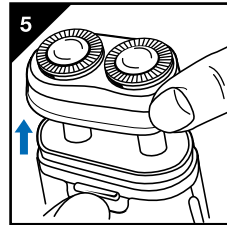
1. Clean Razor Head Assembly as shown (Fig. 2).
2. Press Razor Head Release Button and lift Razor Head Assembly using thumb and index finger to remove from razor housing (Fig. 3).
3. Clean inside of Razor Head Assembly and Hair Chamber with long bristles of brush (Fig. 4).
4. Press Razor Head Assembly back on razor housing.



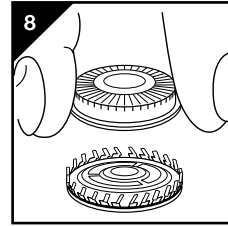
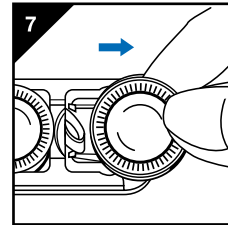
### 5B. ONCE EVERY 4-8 WEEKS

**IMPORTANT:** Do **NOT** interchange the cutters and combs. They are a matched set and if interchanged may adversely affect shaving performance until cutters reseal themselves. Therefore, remove, clean, and replace each set individually.

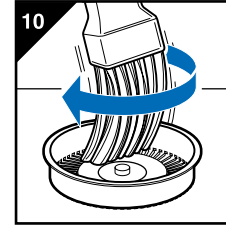
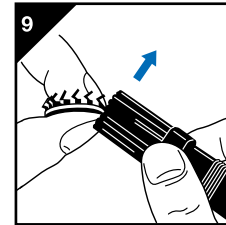
1. Remove Razor Head Assembly. Press Razor Head Release Button and lift Razor Head Assembly using thumb and index finger to remove from razor housing (Fig. 5).



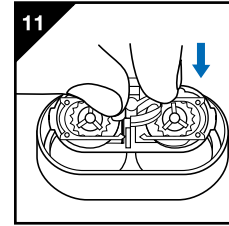
2. Squeeze S-formation in center of retainer plate and lift out from Razor Head Assembly (Fig. 6).
3. Slide one cutter and comb out of frame (Fig. 7).
4. **Each cutter and comb is a matched set; do not interchange them.** Separate one cutter/comb, at a time, as shown (Fig. 8).
5. Cutter should be held as shown and brushed in an upward motion (Fig. 9).



6. Clean razor comb with long bristles of brush in a circular motion as shown (Fig. 10).
7. For consistently close and comfortable shaves, razor heads should be cleaned and lubricated every 4-8 weeks. After cleaning heads in a degreasing liquid (e.g. Norelco Razor Cleaner, RAZORMATE Electrosonic Cleaner or alcohol), and reassembling razor, spread Norelco



8. Replace cutter into comb section, and slide back into retainer plate.
9. Repeat procedure for other cutting head.
10. Replace retainer plate, with cutting heads in place, back into Razor Head Assembly. Press S-formation until plate clicks into place (Fig. 11).
11. Press Razor Head Assembly back on razor housing.



## 6. HP1917 REPLACE- MENT HEADS AND RAZOR ACCESSORIES

### Replacement Heads:

The self-sharpening rotary blades in your Norelco razor are precision-made to give closer shaves. When they finally do need replacing, specify only Norelco brand replacement cutters and combs, model HP1917.

**DO NOT USE** shaver sharpeners as this will damage your blades and cutters and will adversely affect the shaving performance.

**NOTE:** It is recommended that you *replace* your razor heads once a year.

### Razor Cleaners:

Norelco RAZORMATE Electrosonic Heads Cleaner, model ERC100, effectively vibrates to remove hair, stubble, facial oils, accumulated dirt and residue from heads.

Norelco Razor Cleaner, model RC1776, removes dirt and skin oils from razor heads.

Norelco Razor Lubricant, model AL80, lubricates razor heads for improved performance.

Norelco Razor Accessories may be purchased at a store near you, a Norelco Service Store, or by using the handy order form enclosed.

## 7. IMPORTANT BATTERY DISPOSAL INFORMATION

### When discarding your razor:

THIS NORELCO RAZOR CONTAINS NICKEL-CADMIUM RECHARGEABLE BATTERIES WHICH MUST BE RECYCLED OR DISPOSED OF PROPERLY.

Refer to enclosed instruction sheet for directions on removing rechargeable batteries.

### CAUTION:

- Batteries should be removed only when razor is to be discarded.
- Make sure razor is unplugged before dismantling for battery removal.
- All servicing or battery replacement should be performed by an Authorized Norelco Service Location only.

## 60-DAY MONEY-BACK GUARANTEE

If you are not fully satisfied with your Norelco Men's or Women's Razor, Women's Hair Removal System, Home Hair Cutting System or Beard and Moustache Trimmer, Norelco will refund you the full purchase price. Send the product back to:

Norelco Consumer Products Company  
A Division of  
Philips Electronics North America Corporation  
P.O. Box 1116  
Skokie, IL 60076

The product must be shipped prepaid by insured mail, insurance prepaid, have the sales slip indicating purchase price and date of purchase enclosed, and be postmarked **no later than 60 days** after the date of purchase. Norelco reserves the right to verify the purchase price of the product.

Send dated sales slip, your complete name and address as indicated below, and the product, prepaid to: **Norelco Consumer Products Company, A Division of Philips Electronics North America Corporation, P.O. Box 1116, Skokie, IL 60076.** Please allow 4-6 weeks for delivery of check.

NAME \_\_\_\_\_  
Please Print

ADDRESS \_\_\_\_\_

CITY \_\_\_\_\_

STATE \_\_\_\_\_ ZIP \_\_\_\_\_

TELEPHONE NO. ( ) \_\_\_\_\_  
Area Code

REASON FOR RETURNING \_\_\_\_\_

\_\_\_\_\_  
\_\_\_\_\_  
\_\_\_\_\_  
\_\_\_\_\_

### FULL TWO YEAR WARRANTY

Philips Electronics North America Corporation warrants each new Norelco Product, Model 282XL (except cutters and combs), against defects in materials or workmanship for a period of two years from the date of purchase, and agrees to repair or replace any defective product without charge.

**IMPORTANT:** This warranty does not cover damage resulting from accident, misuse or abuse, lack of reasonable care, the affixing of any attachment not provided with the product or loss of parts or subjecting the product to any but the specified voltage.\* Use of unauthorized replacement parts will void this warranty.

**PHILIPS ELECTRONICS NORTH AMERICA CORPORATION WILL NOT PAY FOR WARRANTY SERVICE PERFORMED BY A NON-AUTHORIZED REPAIR SERVICE AND WILL NOT REIMBURSE THE CONSUMER FOR DAMAGE RESULTING FROM WARRANTY SERVICE PERFORMED BY A NON-AUTHORIZED REPAIR SERVICE. NO RESPONSIBILITY IS ASSUMED FOR ANY SPECIAL, INCIDENTAL OR CONSEQUENTIAL DAMAGES.**

In order to obtain warranty service, simply take or ship the product postage prepaid to the nearest Norelco Service Store. Warranty service is available at any Authorized Norelco Service Location. It is suggested that for your protection you return shipments of product by insured mail, insurance prepaid. Damage occurring during shipment is not covered by this warranty.

**NOTE:** No other warranty, written or oral, is authorized by Philips Electronics North America Corporation.

This warranty gives you specific legal rights, and you may also have other rights which vary from state to state. Some states do not allow the exclusion or limitation of incidental or consequential damages, so the above exclusion and limitations may not apply to you.

\* Read enclosed instructions carefully.

Manufactured for:  
Norelco Consumer Products Company  
A Division of Philips Electronics North America Corporation  
1010 Washington Blvd.  
Stamford, CT 06912-0015

### MADE IN HOLLAND.

 This symbol on the product's nameplate means it is listed by Underwriters' Laboratories, Inc.

Norelco and RAZORMATE are Registered Trademarks of Philips Electronics North America Corporation.

Rota 2, Rota 2 & Design, and Rota-Action are Trademarks of Philips Electronics North America Corporation.

© Philips Electronics North America Corporation 1995



ROTA-ACTION SHAVING SYSTEM

## Free Manuals Download Website

<http://myh66.com>

<http://usermanuals.us>

<http://www.somanuals.com>

<http://www.4manuals.cc>

<http://www.manual-lib.com>

<http://www.404manual.com>

<http://www.luxmanual.com>

<http://aubethermostatmanual.com>

Golf course search by state

<http://golfingnear.com>

Email search by domain

<http://emailbydomain.com>

Auto manuals search

<http://auto.somanuals.com>

TV manuals search

<http://tv.somanuals.com>