

## FULL TWO YEAR WARRANTY

Philips Electronics North America Corporation warrants each new Norelco product, Model T-5000 (except cutters), against defects in materials or workmanship for a period of two years from the date of purchase, and agrees to repair or replace any defective product without charge.

**IMPORTANT:** This warranty does not cover damage resulting from accident, misuse or abuse, lack of reasonable care, the affixing of any attachment not provided with the product or loss of parts or subjecting the product to any but the specified batteries.\* Use of unauthorized replacement parts will void this warranty.

**PHILIPS ELECTRONICS NORTH AMERICA CORPORATION WILL NOT PAY FOR WARRANTY SERVICE PERFORMED BY A NON-AUTHORIZED REPAIR SERVICE AND WILL NOT REIMBURSE THE CONSUMER FOR DAMAGE RESULTING FROM WARRANTY SERVICE PERFORMED BY A NON-AUTHORIZED REPAIR SERVICE.**

**NO RESPONSIBILITY IS ASSUMED FOR ANY SPECIAL, INCIDENTAL OR CONSEQUENTIAL DAMAGES.**

In order to obtain warranty service, simply take or ship the product postage prepaid to the nearest Authorized Norelco Service Location. It is suggested that for your protection you return shipments of product by insured mail, insurance prepaid. Damage occurring during shipment is not covered by this warranty. **NOTE:** No other warranty, written or oral, is authorized by Philips Electronics North America Corporation. This warranty gives you specific legal rights, and you may also have other rights which vary from state to state. Some states do not allow the exclusion or limitation of incidental or consequential damages, so the above exclusion and limitations may not apply to you.

Manufactured for: Norelco Consumer Products Company  
A Division of Philips Electronics North America Corporation  
1010 Washington Blvd., Stamford, CT 06912-0015

**MADE IN AUSTRIA.**

Norelco is a Registered Trademark of  
Philips Electronics North America Corporation.  
PHILIPS and Philips Shield are Registered Trademarks of  
Philips Electronics N.V.

© 1998 Philips Electronics North America Corporation.  
All Rights Reserved.

  
**INGENIOUS MEN'S GROOMING SOLUTIONS**



## T-5000 Cordless Beard and Moustache Trimmer

### Instructions for use

If you need help, answers or  
service, please call us at  
1-800-243-3050



## IMPORTANT SAFETY INSTRUCTIONS

When using a battery operated appliance, basic safety precautions should always be followed, including the following: Read all instructions before using this appliance.

## WARNING

To reduce the risk of burns, fire or injury to persons:

1. Close supervision is necessary when this appliance is used by, on, or near children or the disabled.
2. Use this appliance for its intended household use as described in this manual. Do not use attachments not recommended by Philips Electronics North America Corporation.
3. Never operate this appliance if it is not working properly, if it has been dropped or damaged, or dropped into water. Return the appliance to an Authorized Norelco Service Location for examination and repair.
4. Never drop or insert any object into any opening.
5. Do not operate where aerosol (spray) products are being used or where oxygen is being administered.
6. Do not use this appliance with a damaged or broken cutter, as facial injury may occur.
7. If trimmer is not used on a regular basis, remove batteries to prevent possible damage due to chemical leakage. If batteries do leak, remove them carefully. Do not allow bare skin to touch leaking fluid.

8. Dispose of used batteries properly. Do not incinerate. Batteries may explode if overheated. Do not wrap in metal or aluminum foil. Wrap in newspaper before discarding. It is suggested that you contact your local town/city to determine proper battery redemption site(s) in your area.

9. Do not attempt to recharge alkaline, heavy-duty or regular batteries in a nickel cadmium battery charger.

## SAVE THESE INSTRUCTIONS



**PHILIPS**

Download from [www.Somanuals.com](http://www.Somanuals.com). All Manuals Search And Download.



## 60 - DAY MONEY-BACK GUARANTEE

If you are not fully satisfied with your Norelco Beard and Moustache Trimmer, send the product back and we'll refund you the full purchase price.

The Trimmer must be shipped prepaid by insured mail, insurance prepaid, and have the sales receipt, indicating purchase price and the date of purchase, enclosed. The Trimmer must be post-marked no later than 60 days after the date of purchase. Norelco reserves the right to verify the purchase price of the trimmer and limit refunds not to exceed suggested retail price.

Send dated sales receipt, your complete name and address as indicated below, and the Trimmer, prepaid to:

**Norelco Consumer Products Company**  
A Division of  
**Philips Electronics North America Corporation**  
P.O. Box 1116  
Skokie, IL 60076

Please allow 4-6 weeks for delivery of check. (Please Print)

Name \_\_\_\_\_

Address \_\_\_\_\_

City \_\_\_\_\_

State \_\_\_\_\_ Zip \_\_\_\_\_

Telephone No. ( \_\_\_\_\_ ) \_\_\_\_\_  
AREA CODE

REASON FOR RETURNING \_\_\_\_\_

\_\_\_\_\_

\_\_\_\_\_

\_\_\_\_\_

## Features

- A. Removable Trimmer Guard Attachment
- B. 3-Dimensional Rounded Chromium Steel Cutter Blades
- C. Unique Patented Zoom Ring with 9 Pre-select Settings:  
.06, .1, .16, .22, .3, .38, .48, .6, .72 in./  
1.5, 2.5, 4, 5.5, 7.5, 9.5, 12, 15, 18mm
- D. Selected Hair Length Setting Window
- E. Swing-Away Cutter Blades
- F. On/Off Switch
- G. Battery Compartment - Operates on 2 "AA" 1.5V Alkaline or Carbon Zinc Batteries (not included)
- H. Cleaning Brush



## IMPORTANT

Give your new Trimmer a chance! Like many new products, your Norelco Trimmer may take a little getting used to. If you are using a Trimmer for the first time, or if you've been using a different brand, take the time to acquaint yourself with your new Norelco Trimmer. Your Trimmer comes complete with an adjustable Zoom Ring featuring 9 pre-select hair length settings for greater control and versatility when grooming your beard.

Before using the Zoom Ring, always make sure the Trimmer is in the OFF position. You may want to begin by using the highest setting (#9) to prevent trimming too much hair initially. Then, consecutively try the next setting(s) until you find your preferred length. By learning to use the 9 position Zoom Ring properly, you can achieve different lengths for your beard, moustache and sideburns quickly and easily for precise trimming every time.

## Product Assistance

For assistance or the Authorized Norelco Service Location nearest you, call toll free:

**1-800-243-3050**

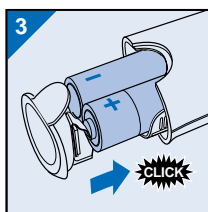
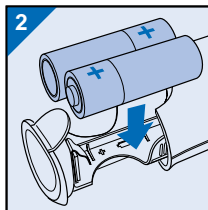
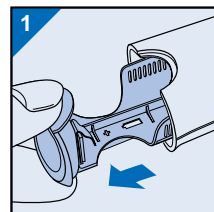
Authorized Service Location information is available 24 hours a day, 7 days a week.

## Batteries

- Your new Trimmer requires 2 "AA" 1.5 V alkaline or carbon zinc batteries.

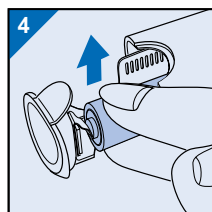
### To Insert Batteries

- Be certain Trimmer is in the OFF position.
- Hold Trimmer horizontally and press the release tabs located at base of Trimmer. Gently slide battery compartment out of Trimmer housing until it stops (Fig. 1)



**NOTE:** Battery compartment is not removable.

- Insert the batteries as shown making sure the (+) and (-) markings on the batteries match those on inside compartment of Trimmer (Fig. 2).
- Slide the battery compartment back into Trimmer housing (Fig. 3).



**NOTE:** Trimmer will not operate if batteries are inserted incorrectly. If you do not intend to use the appliance for a long time, remove the batteries. Leaking batteries can cause damage to the product.

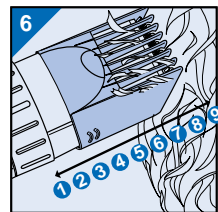
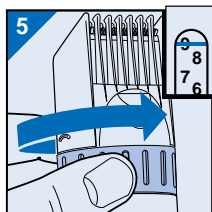
### To Remove Batteries

- Follow steps 1-2 above. Push the batteries out of the holder as shown (Fig. 4).

## Hair Length Selector

- Trimmer Guard Attachment must be in place on the Trimmer in order to use the Zoom Ring.**
- Zoom Ring with Trimmer Guard Attachment ensures precise trimming and has 9 adjustable settings (see chart below).
- Zoom Ring will "click" into position at each setting.
- Start at a longer setting (#7, 8 or 9) to prevent accidentally trimming hairs too short (Fig. 5).
- Trim against the direction of hair growth (Fig. 6)
- As you become familiar with the settings, adjust Zoom Ring to desired trimming length.

#1	Stubble Length or Closely Cropped	.06 in./1.5 mm
#2	Short	.1 in./2.5 mm
#3		.16 in./4 mm
#4		.22 in./5.5 mm
#5	Medium	.3 in./7.5 mm
#6		.38 in./9.5 mm
#7		.48 in./12 mm
#8		.6 in./15 mm
#9	Long	.72 in./18 mm



## Trimmer Guard Attachment

### To Remove

- Remove Trimmer Guard Attachment if you are:
- Defining hair lines
- Trimming nape of neck
- Removing single, unwanted hairs

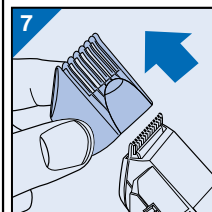
- Be certain Trimmer is in the OFF position.

- Hold Trimmer base with one hand, grasp sides of Trimmer Guard Attachment and gently slide Attachment off Trimmer (Fig. 7).

**NOTE:** Zoom Ring can be on any setting when removing or replacing Trimmer Guard Attachment.

### To Replace

- Be certain Trimmer is in



the OFF position.

- Hold Trimmer in one hand and replace Attachment back onto Trimmer until it "clicks" into position.

**NOTE:** The Trimmer Guard Attachment can be placed on Trimmer only one way. If it does not fit properly, reverse it.

### To Trim Beard

- Comb hairs outward so that they are at their maximum height and in the same direction.

- With Trimmer Guard Attachment in place, set Zoom Ring to desired setting.

- Slide On/Off switch to the ON position and begin trimming (Fig. 8).

- Turn Trimmer OFF.



**IMPORTANT:** If using Trimmer without Trimmer Guard Attachment, use a slow, very light "skimming" technique to prevent trimming off more than the desired amount of hair.

### To Trim Outer Edge of Beard & Add Definition

- Remove Trimmer Guard Attachment.

- Hold Trimmer diagonally with front of Trimmer facing away from you (Fig. 9).

- Turn Trimmer ON.
- Start at chin and work back toward ear.

- Follow line of jawbone to cut away longer hairs on outer edge of beard.

- Turn Trimmer OFF.

**NOTE:** Practice is best for optimum results.



## Trimmer Guard Attachment (continued)

### To Define Beard Line

1. Hold Trimmer vertically with front of Trimmer facing you.
2. Start with trimmed edge of beard and with downward motions trim area directly under the beard line.

### To Thin and Taper Beard

1. Use a small comb to hold hairs in place while trimming.
2. Hold Trimmer with front of Trimmer facing away from you.
3. Trim hair ends using an upward motion.
4. Turn Trimmer OFF.

### To Trim Moustache with Trimmer Guard Attachment

- Be certain Trimmer Guard Attachment is on to prevent trimming off too many hairs.
1. Comb hairs outward so they are at their maximum height and in the same direction.
  2. Set Zoom Ring to desired setting.

- Hold Trimmer vertically with front of Trimmer facing you.
- Trim hairs using a downward motion following the direction of your hair growth or you may trim against your hair growth—whichever is preferred.

**NOTE:** Since all hairs do not grow in the same direction, you may want to try different trimming positions (i.e. upwards, downwards or across). Practice is best for optimum results.

### To Trim Moustache without Trimmer Guard Attachment

1. Remove Trimmer Guard Attachment.
2. Place a finger on upper lip to lift hair up, away from skin.
3. Trim hairs using an upward motion.
4. After achieving desired length, use a downward motion to blend moustache hairs (Fig. 10).



**NOTE:** Use a slow and gentle pressure. Too much pressure may trim more hair than desired.

5. Turn Trimmer OFF.

### To Trim Sideburns

1. Comb sideburns following the direction of your hair growth.
2. Be certain Trimmer Guard Attachment is ON.
3. Hold Trimmer vertically with front of Trimmer facing you.
4. Trim sideburns using a downward motion.
5. Turn Trimmer OFF.

### To Achieve The "Stubble" Look

- The Trimmer Guard Attachment is unique because it has a small slot between the two rows of teeth enabling you to trim hairs to only .06 in./1.5mm in length.
1. Be certain Trimmer Guard Attachment is ON and Zoom Ring is on the lowest setting (#1).
  2. Hold Trimmer horizontally with front of Trimmer facing downwards or upwards.
  3. Trim hairs using a downward or upward motion, whichever is more comfortable, following the direction of your hair growth (Fig. 11).
  4. Turn Trimmer OFF.



## Maintenance

### IMPORTANT

- Always switch Trimmer OFF before cleaning.
- Never clean, remove or replace Trimmer Guard Attachment with motor on.
- Do NOT apply pressure to cutters.
- Do NOT touch cutters with hard objects as this may damage them.
- If Trimmer is not used regularly, remove batteries to prevent possible damage due to chemical leakage.
- DO NOT use while bathing, showering or immerse the unit in water or other liquids as damage to Trimmer may occur.
- NEVER use harsh or corrosive cleaners such as benzene or bleach.

### During Use

- If cut hairs have accumulated in the comb area, pull Trimmer Guard Attachment off Trimmer (Fig. 13) and remove hairs by shaking and/or blowing (Fig. 14).

### Once A Week

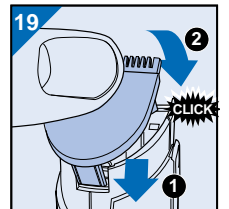
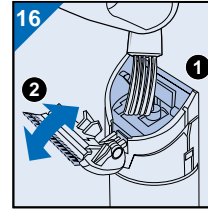
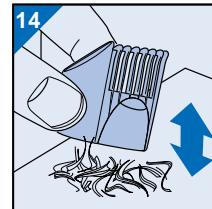
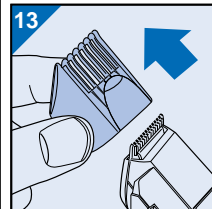
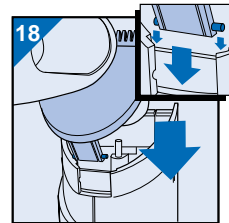
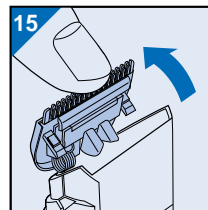
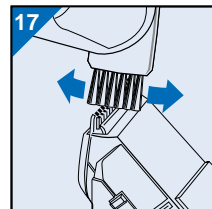
1. Be certain Trimmer is in OFF position.
2. Remove Trimmer Guard Attachment.
3. Hold Trimmer as shown and gently push cutter tab (located beneath the cutters) backwards (Fig. 15).
4. Lightly brush out cutters, hair chamber and Trimmer Guard Attachment (Fig. 16 & 17) with cleaning brush provided.

### To Replace Cutters

If your cutters become damaged or worn, do not continue using the Trimmer. Replace cutters immediately.

1. Remove the old cutters by pushing cutting unit backwards (see Fig. 15) and then pull it upwards off Trimmer.
2. Place the two notches of the new cutting unit into the guide slots (Fig. 18).

3. Push the cutting unit back until it "clicks" into place (Fig. 19).



## Free Manuals Download Website

<http://myh66.com>

<http://usermanuals.us>

<http://www.somanuals.com>

<http://www.4manuals.cc>

<http://www.manual-lib.com>

<http://www.404manual.com>

<http://www.luxmanual.com>

<http://aubethermostatmanual.com>

Golf course search by state

<http://golfingnear.com>

Email search by domain

<http://emailbydomain.com>

Auto manuals search

<http://auto.somanuals.com>

TV manuals search

<http://tv.somanuals.com>