

FULL TWO YEAR WARRANTY

Philips Electronics North America Corporation warrants each new Norelco product, Model T-6000 or T-7000 (except cutters), against defects in materials or workmanship for a period of two years from the date of purchase, and agrees to repair or replace any defective product without charge.

IMPORTANT: This warranty does not cover damage resulting from accident, misuse or abuse, lack of reasonable care, the affixing of any attachment not provided with the product or loss of parts or subjecting the product to any but the specific voltage.* Use of unauthorized replacement parts will void this warranty.

PHILIPS ELECTRONICS NORTH AMERICA CORPORATION WILL NOT PAY FOR WARRANTY SERVICE PERFORMED BY A NON-AUTHORIZED REPAIR SERVICE AND WILL NOT REIMBURSE THE CONSUMER FOR DAMAGE RESULTING FROM WARRANTY SERVICE PERFORMED BY A NON-AUTHORIZED REPAIR SERVICE.

NO RESPONSIBILITY IS ASSUMED FOR ANY SPECIAL, INCIDENTAL OR CONSEQUENTIAL DAMAGES.

In order to obtain warranty service, simply take or ship the product postage prepaid to the nearest Authorized Norelco Service Location. It is suggested that for your protection you return shipments of product by insured mail, insurance prepaid. Damage occurring during shipment is not covered by this warranty. **NOTE:** No other warranty, written or oral, is authorized by Philips Electronics North America Corporation. This warranty gives you specific legal rights, and you may also have other rights which vary from state to state. Some states do not allow the exclusion or limitation of incidental or consequential damages, so the above exclusion and limitations may not apply to you.

*Read enclosed instructions carefully.

Manufactured for: Norelco Consumer Products Company
A Division of Philips Electronics North America Corporation
1010 Washington Blvd., Stamford, CT 06912-0015

MADE IN AUSTRIA.

Norelco is a Registered Trademark of Philips Electronics North America Corporation. PHILIPS and Philips Shield are Registered Trademarks of Philips Electronics N.V.

© 1998 Philips Electronics North America Corporation.
All Rights Reserved.



This symbol on the product's nameplate means it is listed by Underwriters' Laboratories, Inc.



INGENIOUS MEN'S GROOMING SOLUTIONS



T-7000 and T-6000 Rechargeable Cordless Beard and Moustache Trimmers

Instructions For Use



If you need help, answers or service, please call us at 1-800-243-3050



PHILIPS

Download from www.Somanuals.com. All Manuals Search And Download.

IMPORTANT SAFETY INSTRUCTIONS

When using an electrical appliance, basic safety precautions should always be followed, including the following:
Read all instructions before using this appliance.

DANGER

To reduce the risk of electric shock:

1. Do not reach for a Trimmer that has fallen into water. Unplug Base immediately.
 2. Do not use while bathing or in a shower.
 3. Do not place or store Trimmer where it can fall or be pulled into a tub or sink. Do not place in or drop into water or other liquid.
 4. Always unplug this Trimmer/Charging Base from the electrical outlet immediately after using, except when Trimmer is (re)charging.
 5. Unplug Trimmer Base before cleaning.
 6. When discarding Trimmer, unplug Base and remove rechargeable batteries. See enclosed sheet for instructions.
3. Never operate this Trimmer/Charging Base if it has a damaged cord or plug, if it is not working properly, if it has been dropped, damaged, or dropped into water. Return the Trimmer to an Authorized Norelco Service Location for examination and repair.
 4. Keep the Trimmer/Charging Base and Cord away from heated surfaces.
 5. Never drop or insert any object into any opening.
 6. Do not operate, charge Trimmer, or plug in Charging Base outdoors or where aerosol (spray) products are being used or where oxygen is being administered.
 7. Do not use this Trimmer with a damaged or broken cutter, as facial injury may occur.
 8. Place Trimmer in Charging Base first, then plug Charging Base into outlet. To disconnect, turn ON/OFF switch to "OFF" position (switch is down), then remove Charging Base plug from outlet.
 9. To prevent possible damage to the cord, do not wrap cord around the Trimmer or Charging Base.
 10. Never put Trimmer in direct sunlight or store at a temperature above 140°F.

SAVE THESE INSTRUCTIONS

IMPORTANT: YOUR TRIMMER CONTAINS NICKEL-CADMIUM RECHARGEABLE BATTERIES. See enclosed sheet for instruction.

WARNING

To reduce the risk of burns, fire or injury to persons:

1. Close supervision is necessary when this appliance is used by, on, or near children or the disabled.
2. Use this Trimmer for its intended household use as described in this manual. Do not use attachments not recommended by Philips Electronics North America Corporation.



60 - DAY MONEY-BACK GUARANTEE

If you are not fully satisfied with your Norelco Beard and Moustache Trimmer, send the product back and we'll refund you the full purchase price.

The Trimmer must be shipped prepaid by insured mail, insurance prepaid, and have the sales receipt, indicating purchase price and the date of purchase, enclosed. The Trimmer must be post-marked no later than 60 days after the date of purchase. Norelco reserves the right to verify the purchase price of the Trimmer and limit refunds not to exceed suggested retail price.

Send dated sales receipt, your complete name and address as indicated below, and the Trimmer, prepaid to:

Norelco Consumer Products Company
A Division of
Philips Electronics North America Corporation
P.O. Box 1116
Skokie, IL 60076

Please allow 4-6 weeks for delivery of check. (Please Print)

Name _____

Address _____

City _____

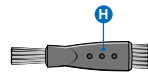
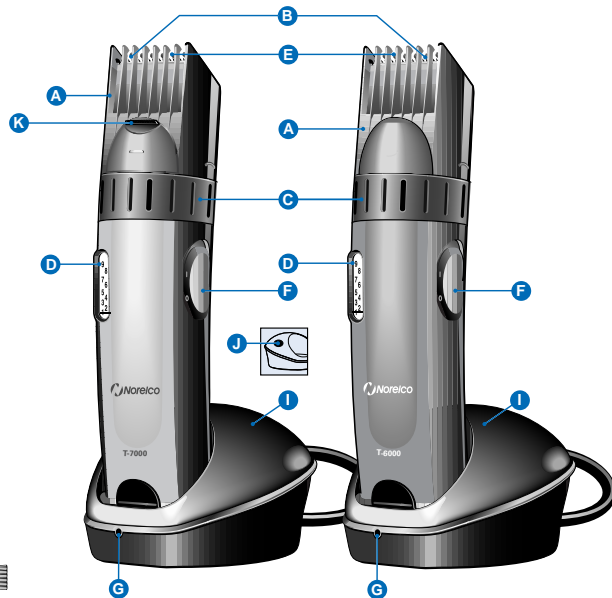
State _____ Zip _____

Telephone No. (_____) _____
AREA CODE

REASON FOR RETURNING _____

Features

- A. Removable Trimmer Guard Attachment
- B. 3-Dimensional Rounded Chromium Steel Cutter Blades
- C. Unique Patented Zoom Ring with 9 Pre-Select Settings: .06, .1, .16, .22, .3, .38, .48, .6, .72 in./ 1.5, 2.5, 4, 5.5, 7.5, 9.5, 12, 15, 18mm
- D. Selected Hair Length Setting Window
- E. Swing-Away Cutter Blades
- F. ON/OFF Switch
- G. Charging Base Indicator Light
- H. Cleaning Brush
- I. Charging Base with Cord
- J. Storage Slot for Cleaning Brush
- K. Pop-Up Trimmer (model T-7000 only)



Important Battery Disposal Information

WHEN DISCARDING YOUR TRIMMER: THIS NORELCO TRIMMER CONTAINS A NICKEL-CADMIUM RECHARGEABLE BATTERY WHICH MUST BE RECYCLED OR DISPOSED OF PROPERLY. Refer to enclosed instruction sheet for directions on removing rechargeable battery.

- CAUTION:**
- Battery should be removed only when trimmer is to be discarded.
 - Remove Trimmer from Charging Base and unplug Charging Base from outlet before dismantling.
 - All servicing should be performed by an Authorized Norelco Service Location only.

Download from www.Somanuals.com. All Manuals Search And Download.

IMPORTANT

Give your new Trimmer a chance! Like many new products, your Norelco Trimmer may take a little getting used to. If you are using a Trimmer for the first time, or if you've been using a different brand, take the time to acquaint yourself with your new Norelco Trimmer. Your Trimmer comes complete with an adjustable Zoom Ring featuring 9 adjustable settings for greater control and versatility when grooming your beard.

Before using the Zoom Ring, always make sure the Trimmer is in the OFF position. You may want to begin by using the highest setting (#9) to prevent trimming too much hair initially. Then, consecutively try the next setting(s) until you find your preferred length. By learning to use the 9 position Zoom Ring properly, you can achieve different lengths for your beard, moustache and sideburns quickly and easily for precise trimming every time.

Product Assistance

For assistance or the Authorized Norelco Service Location nearest you, call toll free:

1-800-243-3050

Authorized Service Location information is available 24 hours a day, 7 days a week.

To Charge/Recharge

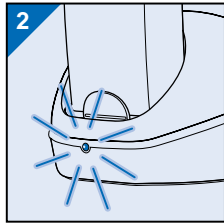
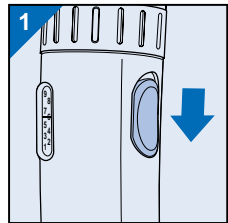
- Use only the Charging Base provided.
- (Re)charge at temperatures between 40°F and 95°F. Charging at lower or higher temperatures adversely affects lifetime of battery.
- Charging requires a full 10 hours.
- Recharging longer than the required period of time will not harm Trimmer. However, continuously charging Trimmer will reduce life of battery.

VOLTAGE

In North America, Central America, and South America, the most common voltage is between 110 and 130V AC. When traveling to other countries, common voltage

may range to 240V AC. Your new Trimmer Charging Base may be used with voltage ranging from 110-130V AC only.

1. Be certain Trimmer is OFF (Fig. 1).
2. Charge the Trimmer in the Charging Base.
3. Plug the cord of Charging Base into the electrical outlet.
4. Green Charging Indicator Light will light to indicate Trimmer is (re)charging (Fig. 2).



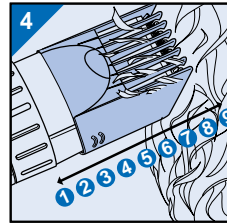
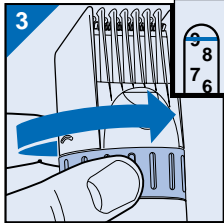
NOTE:

1. The Charging Base can also be used to store the Trimmer.
2. In order to ensure the longest possible working life of the battery:
 - Do not charge for more than 24 hours.
 - Do not keep the Charging Base permanently plugged in.
 - Plug in the Charging Base only when you hear the sound indicating the rechargeable battery will be empty soon.
 - Discharge the battery completely once a year by letting the motor run until it stops.
3. If the battery is empty and you want to trim your beard, charge Trimmer for at least 1.5 hours and you will have enough power for one use.
4. If the Trimmer hasn't been used for a long period of time, Trimmer must be recharged for a full 10 hours.

Hair Length Selector

- **Trimmer Guard Attachment must be in place on the Trimmer in order to use the Zoom Ring.**
 - Zoom Ring with Trimmer Guard Attachment ensures precise trimming and has 9 adjustable settings (see chart below).
 - Zoom Ring will "click" into position at each setting.
- Start at a longer setting (#7, 8 or 9) to prevent accidentally trimming hairs too short (Fig. 3).
 - Trim against the direction of hair growth (Fig. 4)
 - As you become familiar with the settings, adjust Zoom Ring to desired trimming length.

#1	Stubble Length or Closely Cropped	.06 in./1.5 mm
#2	Short	.1 in./2.5 mm
#3		.16 in./4 mm
#4		.22 in./5.5 mm
#5	Medium	.3 in./7.5 mm
#6		.38 in./9.5 mm
#7		.48 in./12 mm
#8		.6 in./15 mm
#9	Long	.72 in./18 mm



Trimmer Guard Attachment

To Remove

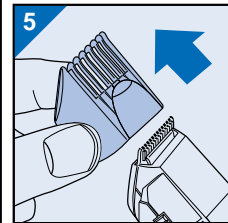
Remove Trimmer Guard Attachment if you are:

- Defining hair lines
 - Trimming nape of neck
 - Removing single, unwanted hairs
1. Be certain Trimmer is in the OFF position.
 2. Hold Trimmer Base with one hand, grasp sides of Trimmer Guard Attachment and gently slide Attachment off Trimmer (Fig. 5).

NOTE: Zoom Ring can be on any setting when removing or replacing Trimmer Guard Attachment.

To Replace

1. Be certain Trimmer is in the OFF position.
2. Hold Trimmer in one hand and replace Attachment



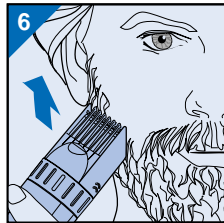
back onto Trimmer until it "clicks" into position.

NOTE: The Trimmer Guard Attachment can be placed on Trimmer only one way. If it does not fit properly, reverse it.

To Trim Beard

1. Comb hairs outward so that they are at their maximum height and in the same direction.
2. With Trimmer Guard Attachment in place, set Zoom Ring to desired setting.
3. Slide ON/OFF switch to the ON position and begin trimming (Fig. 6).
4. Turn Trimmer OFF.

IMPORTANT: If using Trimmer without Trimmer Guard Attachment, use a slow, very light "skimming" technique to prevent trimming off more than



the desired amount of hair.

To Trim Outer Edge of Beard & Add Definition

1. Remove Trimmer Guard Attachment.
2. Hold Trimmer diagonally with front of Trimmer facing away from you (Fig. 7).
3. Turn Trimmer ON.
4. Start at chin and work back toward ear.
5. Follow line of jawbone to cut away longer hairs on outer edge of beard.
6. Turn Trimmer OFF.

NOTE: Practice is best for optimum results.

To Define Beard Line

1. Hold Trimmer vertically with front of Trimmer facing you.
2. Start with trimmed edge of beard and with downward



Trimmer Guard Attachment (continued)

motions trim area directly under the beard line.

To Thin and Taper Beard

1. Use a small comb to hold hairs in place while trimming.
2. Hold Trimmer with front of Trimmer facing away from you.
3. Trim hair ends using an upward motion.
4. Turn Trimmer OFF.

To Trim Moustache with Trimmer Guard Attachment

- Be certain Trimmer Guard Attachment is on to prevent trimming off too many hairs.
1. Comb hairs outward so they are at their maximum height and in the same direction.
 2. Set Zoom Ring to desired setting.
- Hold Trimmer vertically with front of Trimmer facing you.
 - Trim hairs using a downward motion following the direction of your hair growth or you may trim against your hair growth—whichever is preferred.
- NOTE:** Since all hairs do not grow in the same direction, you may want to try differ-

ent trimming positions (i.e. upwards, downwards or across). Practice is best for optimum results.

To Trim Moustache without Trimmer Guard Attachment

1. Remove Trimmer Guard Attachment.
2. Place a finger on upper lip to lift hair up, away from skin.
3. Trim hairs using an upward motion.
4. After achieving desired length, use a downward motion to blend moustache hairs (Fig. 8).

To Trim Moustache with Pop-Up Trimmer: Model T-7000 only

1. Slide Pop-Up Trimmer switch up (Fig. 9).
2. Hold Trimmer perpendicular as shown and move cutters sideways to achieve desired line above lip (Fig. 10).
3. Trim any stray hairs.
4. Slide Pop-Up Trimmer down when finished.

ATTENTION: Main cutter is still operating while Pop-Up Trimmer is in use.

NOTE: Use a slow and gentle pressure. Too much pressure may trim more

hair than desired.

5. Turn Trimmer OFF.

To Trim Sideburns

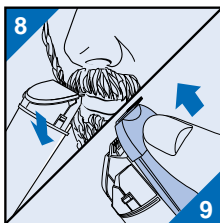
1. Comb sideburns following the direction of your hair growth.
2. Be certain Trimmer Guard Attachment is ON.
3. Hold Trimmer vertically with front of Trimmer facing you.
4. Trim sideburns using a downward motion.
5. Turn Trimmer OFF.

To Achieve The "Stubble" Look

- The Trimmer Guard Attachment is unique because it has a small slot between the two rows of teeth enabling you to trim hairs to only .06 in./1.5mm in length.
1. Be certain Trimmer Guard

Attachment is ON and Zoom Ring is on the lowest setting (#1).

2. Hold Trimmer horizontally with front of Trimmer facing downwards or upwards.
3. Trim hairs using a downward or upward motion, whichever is more comfortable, following the direction of your hair growth.
4. Turn Trimmer OFF.



Maintenance

IMPORTANT

- Always switch Trimmer OFF before cleaning.
- Never clean, remove or replace Trimmer Guard Attachment with motor on.
- Do NOT apply pressure to cutters.
- Do NOT touch cutters with hard objects as this may damage them.
- DO NOT use while bathing, showering or immerse the unit in water or other liquids as damage to Trimmer may occur.
- NEVER use harsh or corrosive cleaners such as benzene or bleach.

During Use

- If cut hairs have accumulated in the comb area,

pull Trimmer Guard Attachment off Trimmer (Fig. 11) and remove hairs by shaking and/or blowing (Fig. 12).

Once A Week

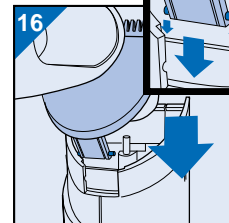
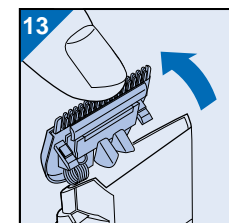
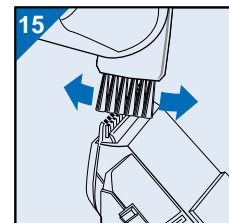
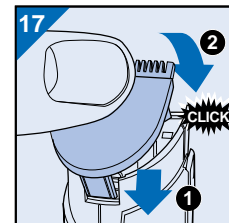
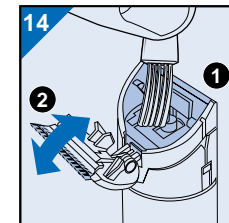
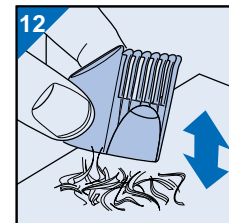
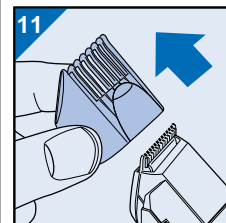
1. Be certain Trimmer is in OFF position.
2. Remove Trimmer Guard Attachment (Fig. 11).
3. Hold Trimmer as shown and gently pull cutter backwards (Fig. 13).
4. Lightly brush out cutters, hair chamber and Trimmer Guard Attachment (Fig. 14 & 15) with cleaning brush provided.

To Replace Cutters

If your cutters become damaged or worn, do not continue using the Trimmer.

Replace cutters immediately.

1. Remove the old cutters by pulling cutting unit backwards (Fig. 13) and then pull it upwards off Trimmer.
2. Install new Trimmer by placing the two notches of the new cutting unit into the guide slots (Fig. 16).
3. Push the cutting unit back until it "clicks" into place (Fig. 17).



Free Manuals Download Website

<http://myh66.com>

<http://usermanuals.us>

<http://www.somanuals.com>

<http://www.4manuals.cc>

<http://www.manual-lib.com>

<http://www.404manual.com>

<http://www.luxmanual.com>

<http://aubethermostatmanual.com>

Golf course search by state

<http://golfingnear.com>

Email search by domain

<http://emailbydomain.com>

Auto manuals search

<http://auto.somanuals.com>

TV manuals search

<http://tv.somanuals.com>