



# PHILIPS



## Quick Use and Hookup Guide

### CONTENTS

Important Notice/Warning . . . . .1	Basic Antenna TV Connections . . . . .2
Basic TV Operation . . . . .1	AV1 Input Connections . . . . .3
Remote Battery Installation . . . . .1	Component Video Input Connections . . . . .3
Remote Control Button Descriptions . . . . .1	Side AV Inputs . . . . .4
Hooking up the Television	S-Video (Side) AV Inputs . . . . .4
Basic Cable/Cable Box TV Connections . . . . .2	Headphone and Data Jack . . . . .4

### IMPORTANT

**NOTE:** This owner's manual is used with several different television models. Not all features (and drawings) discussed in this manual will necessarily match those found with your television set. This is normal and does not require that you contact your dealer or request service.

**WARNING:** TO PREVENT FIRE OR SHOCK HAZARD DO NOT EXPOSE THIS UNIT TO RAIN OR EXCESSIVE MOISTURE.

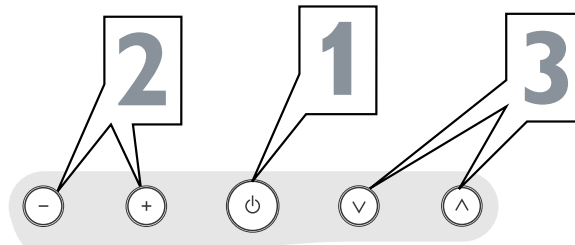
## BASIC LCD TV AND REMOTE OPERATION

### LCD TELEVISION

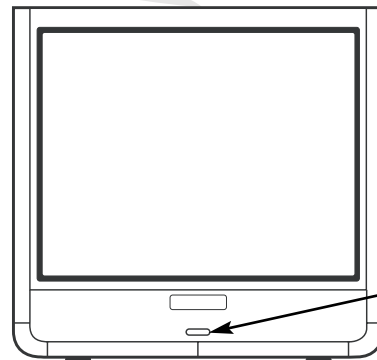
This LCD television has a set of controls located on the top of the cabinet for use when the remote control is not needed.

- 1 Press the POWER button** on the front of the TV cabinet to turn the TV ON.  
**Note:** With AutoChron ON, the TV will search for a PBS channel to set the clock before powering itself on. This can take a few seconds.
- 2 Press the VOLUME + button** to increase the sound level or the **VOLUME - button** to lower the sound level.  
Pressing both buttons at the same time will display the onscreen menu. After you are in the menu, use these buttons to make adjustments or selections.
- 3 Press the CHANNEL ^ or v button** to select TV channels. Use these buttons to make adjustments or selections in the onscreen menu.

There is also a set of Audio and Video Input jacks located on both sides and the bottom of the television cabinet. Refer to the Audio/Video Hookup sections within this Guide.

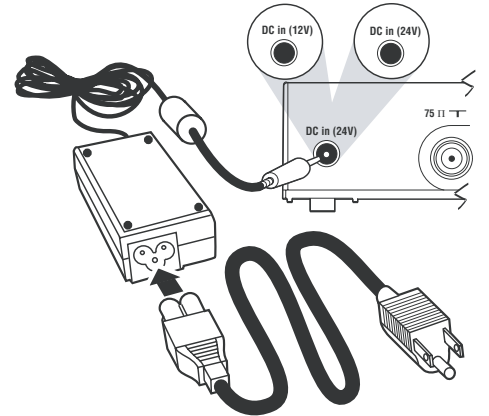


Volume and Channel buttons are located on the top of the television cabinet.



Remote Sensor Window

DC Input located on the bottom jack panel of the TV (12V for 15" Model) (24V for 20" Model)



Power Cord and Adapter

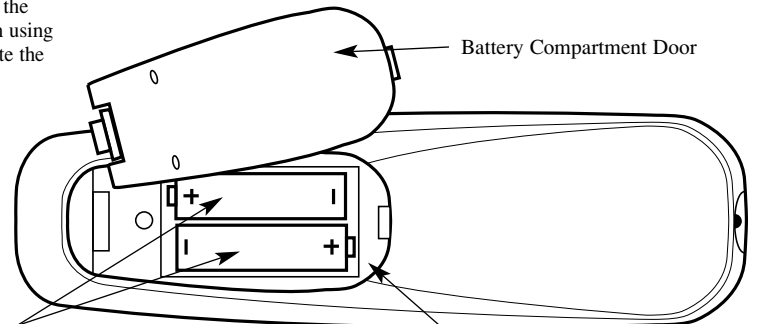
Be sure to point the remote at the Remote Sensor window on the front of the television when using the remote control to operate the television.

### REMOTE CONTROL BATTERIES

To load the supplied batteries into the remote:

- 1 Remove the battery compartment door** on the back of the remote.
- 2 Place the batteries (2-AA) in the remote.** Be sure the (+) and (-) ends of the batteries line up correctly (the inside of the case is marked).
- 3 Reattach the battery compartment door.**

Remote Control (shown from the bottom)



2 "AA" Batteries

Battery Compartment

### REMOTE CONTROL BUTTONS

- Sleep Button** - Press to set the TV to automatically turn itself OFF at a given amount of time.
- Status/Exit Button** - Press to see the current channel number on the TV screen. Also press to clear the TV screen after control adjustments.
- Radio (Mode) Button** - Press to directly enter the specific FM Radio mode.
- CC Button** - Press to select Closed Captioning options within the menu. (See the *Directions for Use* manual for details.)
- Auto Sound Button** - Press to select an AutoSound™ control. Choose from three factory-set controls (VOICE, MUSIC, and THEATRE) and a PERSONAL to tailor the TV sound to enhance the particular type of program you are watching.
- Source Button** - Press repeatedly to select the different signal sources connected to the TV: TV (current channel), AV1, CVI, Side and S-video.
- Menu Button** - Press for the onscreen menu to appear. Pressing the menu button after menu selections are made will eliminate the menu from the display.
- Cursor Buttons (Left, Right, Up, Down)** - Press these buttons to highlight, select, and adjust items on the TV's onscreen menu.
- Volume (+) or (-) Buttons** - Press to adjust the TV sound level.
- Mute Button** - Press to turn the TV sound OFF. Press again to return the sound to its previous level.
- Surf Button** - Press to select previously viewed channels. You can place up to 10 channels in memory. Then by pressing the SURF button you can quickly view the select channels. (See the "Using the Channel Surf Control" section in your *Directions for Use* manual to see how to select a series of channels using the Surf button.)

- Power Button** - Press to turn the TV ON and OFF.
- Program List Button** - Press to display a list of channel numbers and their names. Each channel will appear as a selectable menu item. Refer to the Program List section within the *Directions for Use* manual supplied with the TV for detailed instructions.
- Format Button** - Press to toggle the different screen format options.
- A/CH Button** - Press to toggle between the currently viewed channel and the previously viewed channel.
- TV (Mode) Button** - Press to directly enter the specific TV mode.
- Auto Picture Button** - Press to select an AutoPicture™ control. Choose from four factory-set controls (MOVIES, SPORTS, WEAK SIGNAL, and MULTI MEDIA) and a PERSONAL control that you set according to your own preferences through the onscreen PICTURE menu. The four factory-set controls will tailor the TV picture so as to enhance the particular type of program you are watching, or to improve the picture of a program that has a weak signal.
- Surr. Sound Button** - Press to set various factory Incredible Surround Sound listening modes. (Refer to the Incredible Surround section within the *Directions for Use* for detailed instructions.)
- Channel (+) or (-) Buttons** - Press to change the tuned channel.
- Number Buttons** - Press the number buttons to select TV channels. When selecting single-digit channels, press the number of the desired channel. The TV will pause for a few seconds and then tune to the selected channel. (Note: You can press 0, then the number also.) For channels 100 and above, first press 1 then the next two numbers of the desired channel.
- Clock Button** - Press the CLOCK button to access the onscreen Clock menu.

3139 125 31883



# HOOKING UP THE TELEVISION

## CABLE/CABLE BOX TV

Your Cable TV input into your home may be a single (75 ohm) cable or use a cable box decoder. In either case the connection is very simple. Follow the steps below to connect your cable signal to your new television.

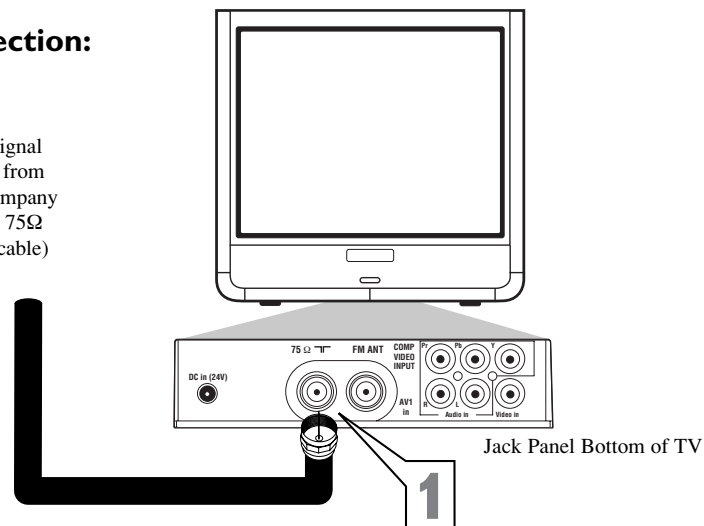
### Direct Cable Connections:

This connection will supply Stereo sound to the TV.

- 1 Connect the open end of the round Cable Company supplied cable to the 75Ω input on the bottom of the TV. Screw it down finger tight.

### Direct Cable Connection:

Cable signal coming from Cable Company (Round 75Ω coaxial cable)



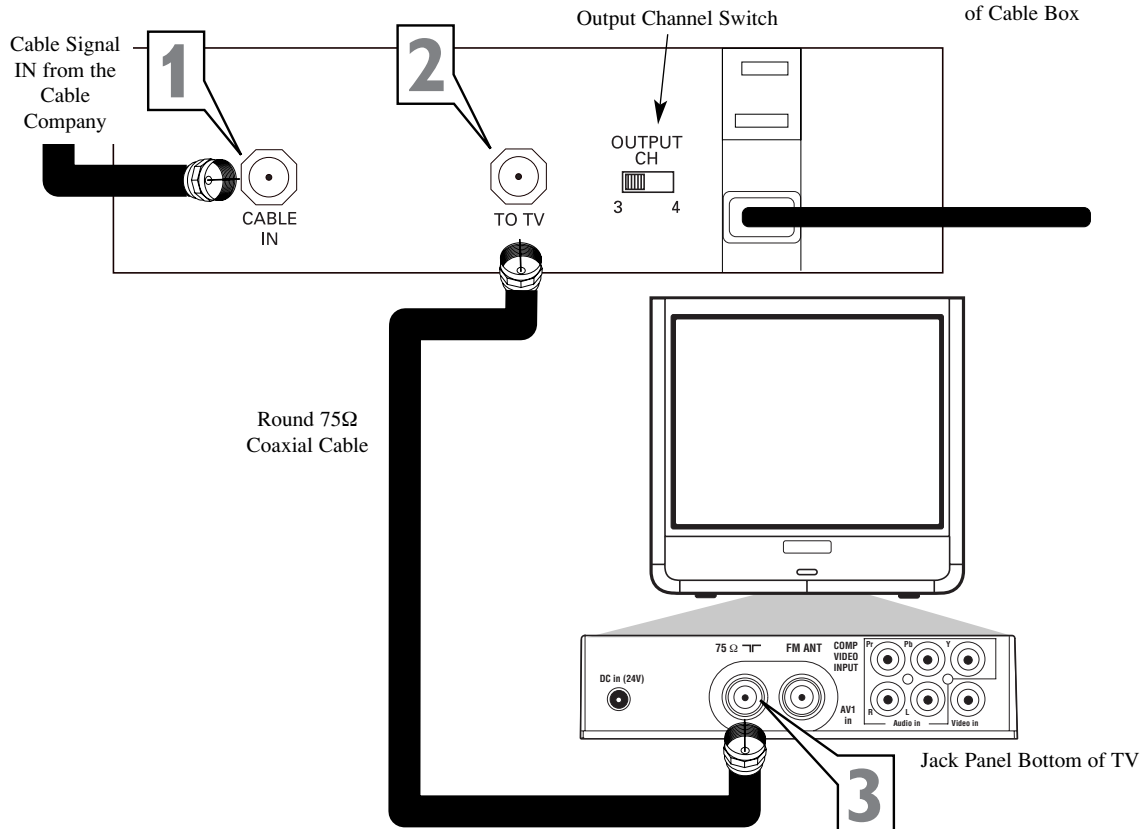
### Cable Box (w/RF In/Outputs):

This connection will NOT supply Stereo sound to the TV. The sound from the cable box will be mono.

- 1 Connect the open end of the round Cable Company supplied cable to the cable signal IN(put) plug on the back of the Cable Box.
- 2 Using a separate round coaxial cable, connect one end to the OUT(put) (TO TV) plug on the back of the Cable Box.
- 3 Connect the other end of the round coaxial cable to the 75Ω input on the bottom of the television. Screw it down finger tight.

**NOTE:** Be sure to set the OUTPUT CHANNEL SWITCH on the back of the cable box to CH 3 or 4, then tune the cable box on the TV to the corresponding channel. Once tuned, change channels at the cable box, not the television.

### Cable Box with RF Inputs and Outputs Connection:



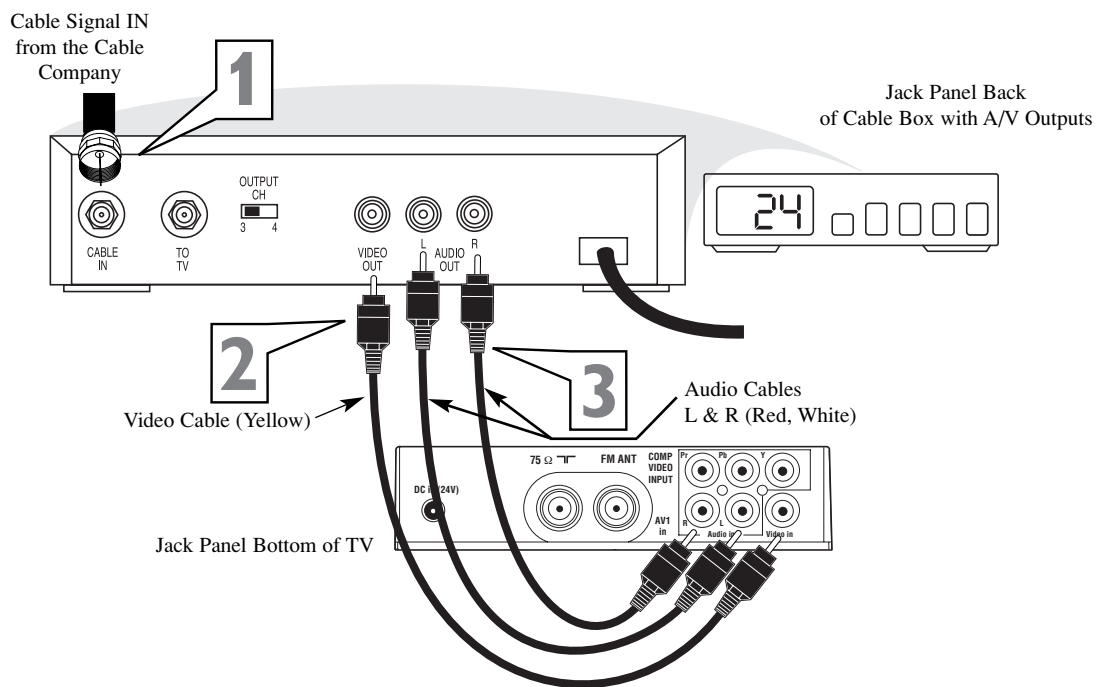
### Cable Box (w/Audio/Video Outputs):

This connection will supply Stereo sound to the TV.

- 1 Connect the open end of the round Cable Company supplied cable to the cable signal IN(put) plug on the back of the Cable Box.
- 2 Using a RCA type Video Cable, connect one end of the cable to the Video (yellow) (or ANT, your cable box may be labeled differently) Out jack on the cable box and the other end to the Video Input on the bottom of the TV.
- 3 Using a RCA type Audio Left and Right Cable, connect one end to the left and right Audio Out L & R jacks (red & white) on the cable box. Connect the other end to the Audio L & R Input jacks on the bottom of the TV.

**NOTE:** Use the SOURCE button on the TV remote control to tune to the AV1 channel for the cable box signal. Once tuned, change channels at the cable box, not the television. Pressing the SOURCE button repeatedly will scroll all the AV Input channels, including the presently tuned channel.

### Cable Box with Audio/Video Outputs Connection:



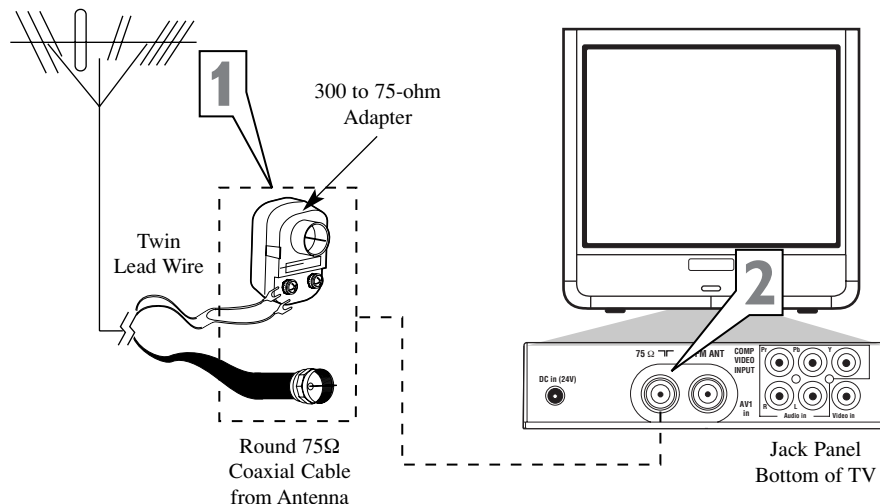
## ANTENNA TV

A combination antenna receives normal broadcast channels (VHF 2-13 and UHF 14-69). Your connection is easy because there is only one 75Ω (ohm) antenna plug on the back of your TV, and that's where the antenna goes.

- 1 If your antenna has a round cable (75 ohm) on the end, then you're ready to connect it to the TV. If your antenna has flat, twin-lead wire (300 ohm), you first need to attach the antenna wires to the screws on a 300- to 75-ohm adapter.
- 2 Push the round end of the adapter (or antenna) onto the 75Ω (ohm) plug on the bottom of the TV. If the round end of the antenna wire is threaded, screw it down finger tight.

### Antenna Connection:

Outdoor or Indoor Antenna (Combination VHF/UHF)  
The combination antenna receives normal broadcast channels 2-13 (VHF) and 14-69 (UHF).



# HOOKING UP THE TELEVISION

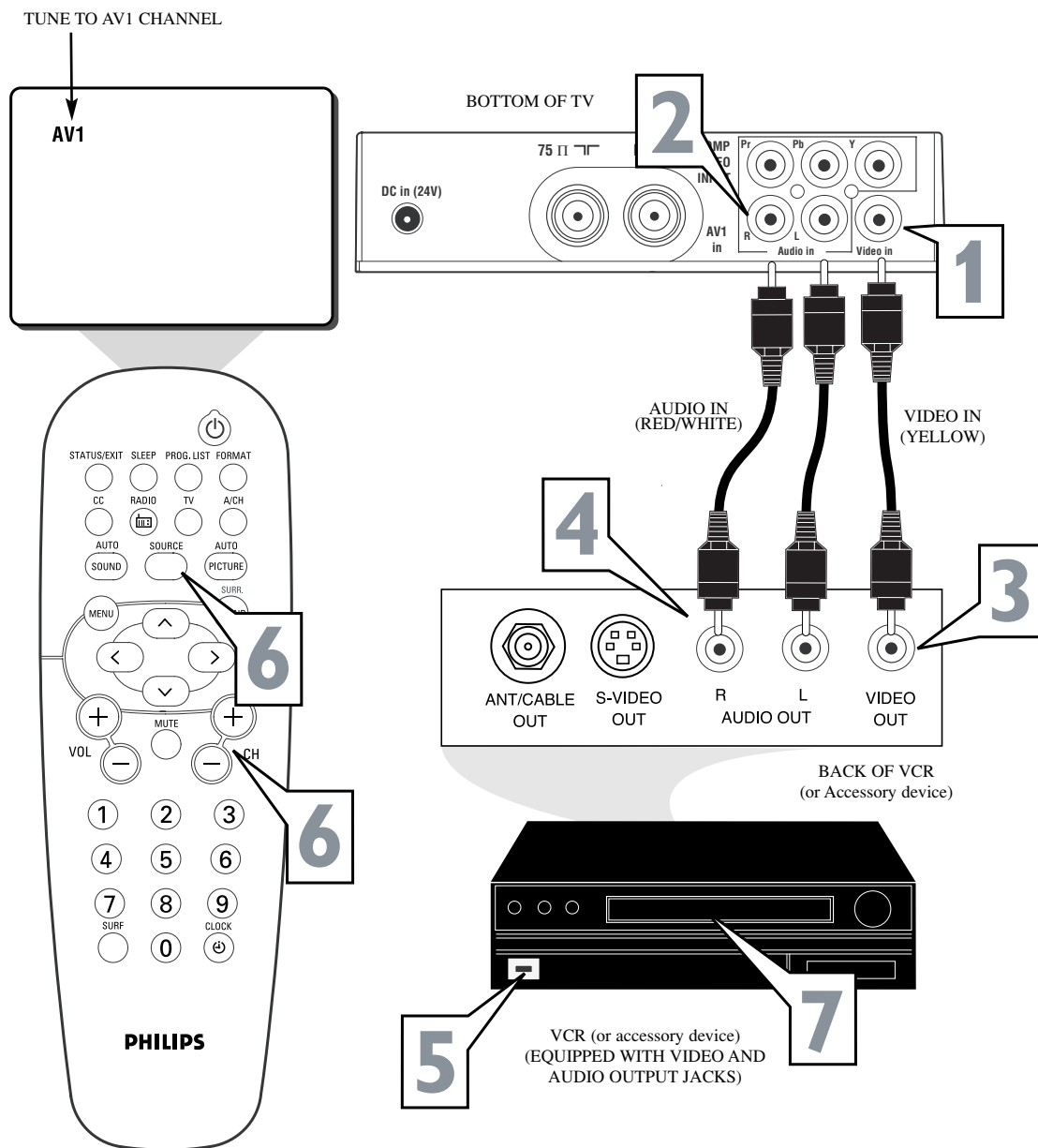
## AV 1 INPUTS

The audio/video input jacks on the bottom panel of the TV are for direct picture and sound connections between the TV and a VCR (or similar device) that has audio/video output jacks.

- 1 Connect the VIDEO (yellow) cable to the VIDEO AV1 in jack on the bottom of the TV.
- 2 Connect the AUDIO (red and white) cables to the AUDIO (left and right) AV1 in jacks on the bottom of the TV.
- 3 Connect the VIDEO (yellow) cable to the VIDEO OUT jack on the back of the VCR or accessory device being used.
- 4 Connect the AUDIO (red and white) cables to the AUDIO (left and right) OUT jacks on the rear of the VCR or accessory device being used.
- 5 Turn the VCR or accessory device and the TV ON.
- 6 Press the SOURCE or CH +, - buttons on the remote control to scroll the channels. AV1 will appear in the upper left corner on the TV screen when tuned properly.
- 7 With the VCR (or accessory device) ON and a prerecorded tape (CD, DVD, etc.) inserted, press the PLAY button to view the tape on the television.

### HELPFUL HINT

**Note:** The Audio/Video cables needed for this connection are not supplied with your TV. Please contact your dealer or Philips at 800-531-0039 for information about purchasing the needed cables.



## COMPONENT (CVI) INPUTS

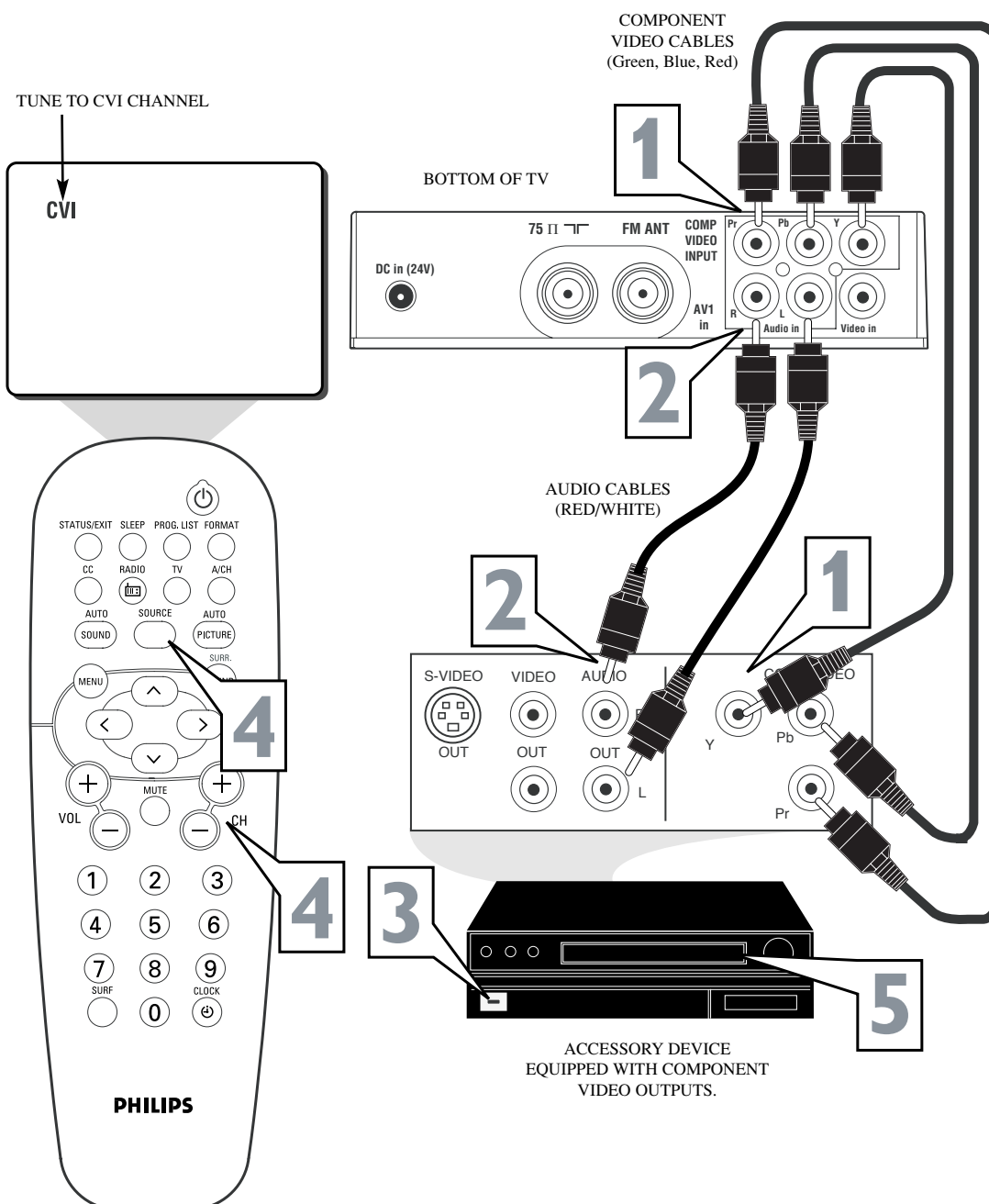
Component Video inputs provide the highest possible color and picture resolution in the playback of digital signal source material, such as with DVD players.

- 1 Connect the Component (Y, Pb, Pr) Video OUT jacks from the DVD player (or similar device) to the COMP(onent) VIDEO Input (Y green, Pb blue, Pr red) jacks on the bottom of the TV. When using the Component Video Inputs, it is best not to connect a signal to the AV1 in Video Jack.
- 2 Connect the red and white AUDIO CABLES to the Audio (left and right) output jacks on the rear of the accessory device to the Audio (L and R) AV1 in Input Jacks on the TV.
- 3 Turn the TV and the DVD (or digital accessory device) ON.
- 4 Press the SOURCE or CH +, - buttons to scroll the available channels until CVI appears in the upper left corner of the TV screen.
- 5 Insert a DVD disc into the DVD player and press the PLAY button on the DVD Player.

### HELPFUL HINT

The description for the component video connectors may differ depending on the DVD player or accessory digital source equipment used (for example, Y, Pb, Pr; Y, B-Y, R-Y; Y, Cr, Cb). Refer to your DVD or digital accessory owner's manual for definitions and connection details.

The CVI connection will be dominate over the AV1 in Video Input. When a Component Video Device is connected as described, it is best not to have a video signal connected to the AV1 in Video Input jack.

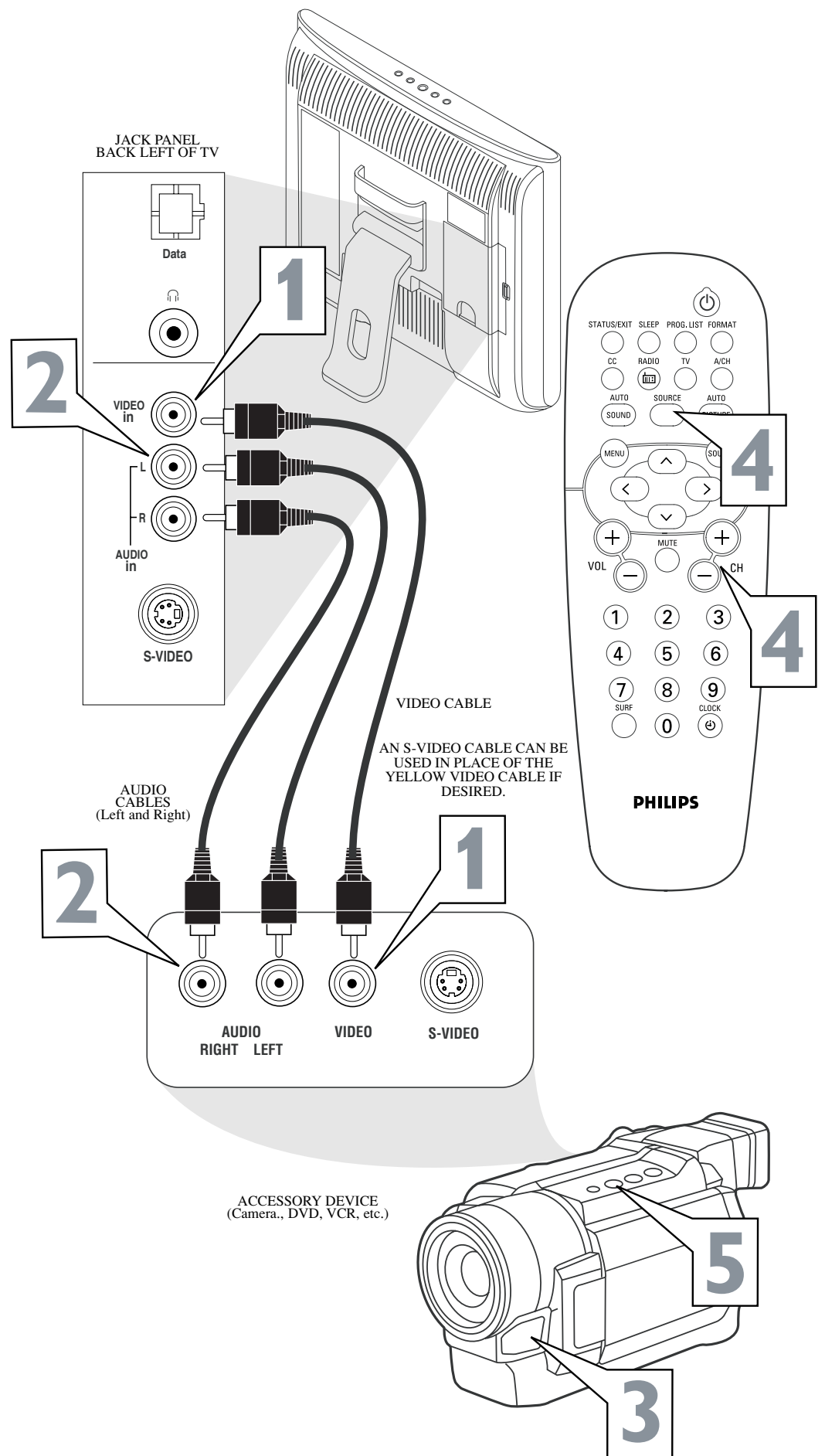


# HOOING UP THE TELEVISION

## SIDE AV INPUTS

Much like the AV 1 Input jacks, the Side jacks allow for extra accessory device connections for items such as cameras or gaming stations. The Side AV Input Jacks are located on the left rear of the TV.

- 1 Connect the VIDEO (yellow) cable to the VIDEO in jack on the left rear of the TV. Connect the other end of the VIDEO (yellow) cable to the VIDEO OUT jack on the back of the accessory device being used.
- 2 Connect the AUDIO (red and white) cables to the AUDIO (left and right) AUDIO in (L & R) jacks on the left rear of the TV. Connect the other ends of the AUDIO (red and white) cables to the AUDIO (left and right) OUT jacks on the rear of the accessory device being used.
- 3 Turn the accessory device and the TV ON.
- 4 Press the SOURCE or CH +, - buttons on the remote control repeatedly to select the SIDE channel for the accessory device. SIDE will appear in the upper left corner on the TV screen when tuned properly.
- 5 With the accessory device ON, press the PLAY button to activate the accessory device (DVD, VCR, CAMERA, etc.) and view the playback on the television.



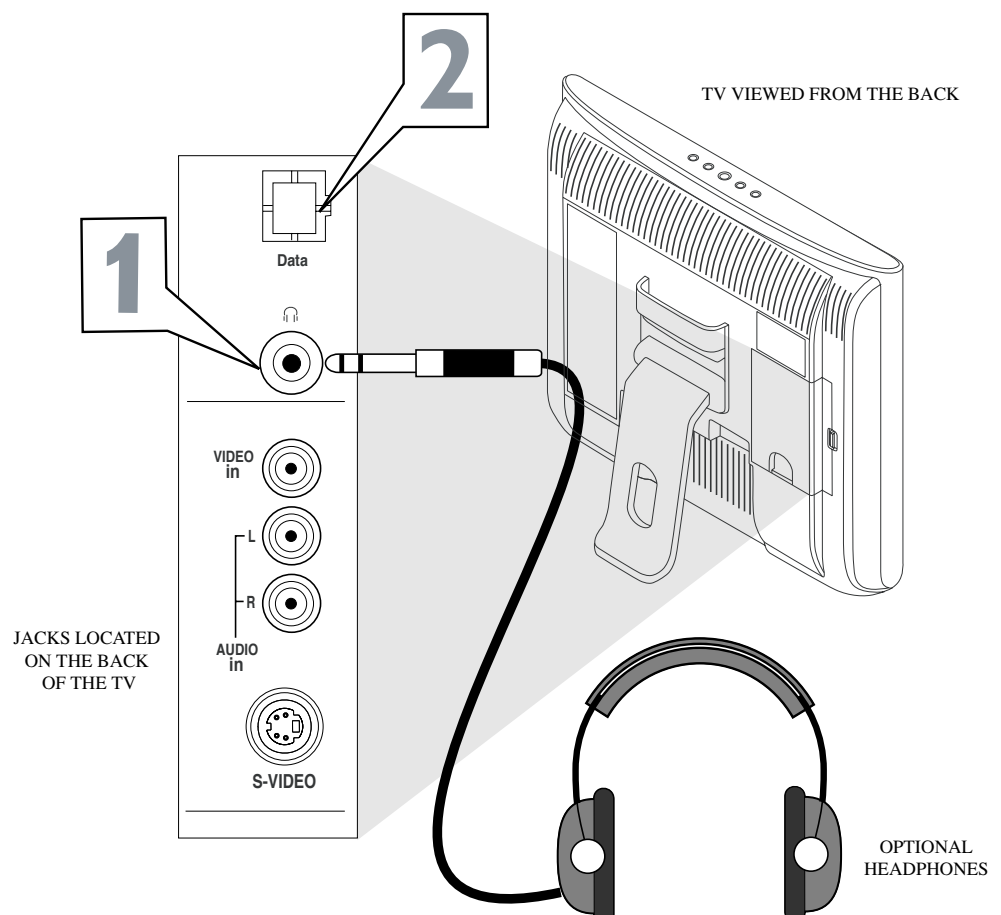
## S-VIDEO INPUT

**Note:** An S-Video cable can be used in place of the yellow Video cable if your device is equipped with an S-Video Output (see step 1). S-Video will provide better video playback.

## HEADPHONE AND DATA JACK

The left side Jack Panel contains three jacks that can be used for your convenience. They include a Headphone Jack, and a Data Jack.

- 1 HEAD PHONE JACK - Used for headphone listening in any of the available modes. When headphones are connected to this jack the TV speakers will be muted.
- 2 DATA JACK - This jack is used in service applications and should not be used by the customer.



## Free Manuals Download Website

<http://myh66.com>

<http://usermanuals.us>

<http://www.somanuals.com>

<http://www.4manuals.cc>

<http://www.manual-lib.com>

<http://www.404manual.com>

<http://www.luxmanual.com>

<http://aubethermostatmanual.com>

Golf course search by state

<http://golfingnear.com>

Email search by domain

<http://emailbydomain.com>

Auto manuals search

<http://auto.somanuals.com>

TV manuals search

<http://tv.somanuals.com>