

Installation Manual  
For 19HFL3233D/10



## Contents:

1. Requirements before starting the installation.....	3
2. Find out the state of the TV .....	4
3. Re-install TV .....	5
4. Installation wizard.....	6
5. Prison Mode.....	10

## 1. Requirements before starting the installation

Before starting the installation, make sure that you have everything you need at hand.

Master remote control 22AV8573



Standard remote control



USB stick

A few key points you need to know.

1. Fixed High Security, this means that the menu is only accessible with the Setup remote. (Green/yellow).
2. The key sequence '3,1,9,7,5,3, MUTE' does **not** activate Prison Mode menu.
3. After configuration the TV needs a restart.

For cloning settings from one TV to another TV, you will need to have a USB stick. This stick needs to be formatted as FAT32 and should be empty.

Always check if the software version on the TV is the latest one. You can do this by using the Master remote and press the recall button. On page 2.1 – Current Main Software, you can see the version the set is using.

The latest software can be downloaded by going to this link.

<http://www.philips.com/support>

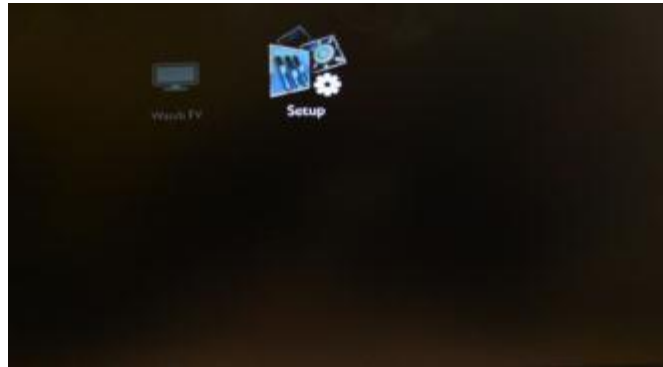
Here you can enter the model number and check the latest version available.

Check if the software version present on TV is identical with the one from the website. If not please download the latest version from the website and unzip it on a USB key. The USB key must be formatted FAT32 and preferably empty to avoid an accidental upload of the wrong settings and software. Follow the instructions on how to upgrade the software.

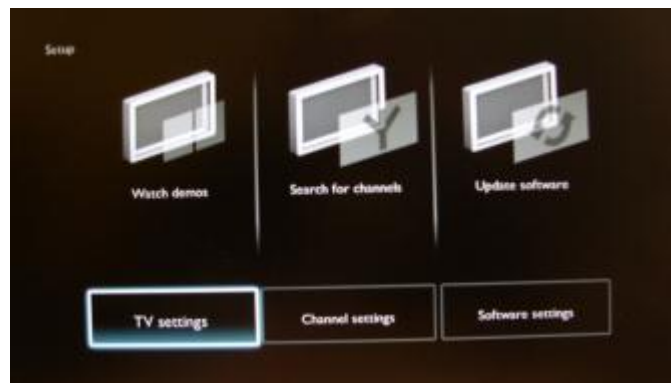
If the software version from your TV is identical with the one available on the website it is not necessary to upgrade.

## 2. Find out the state of the TV

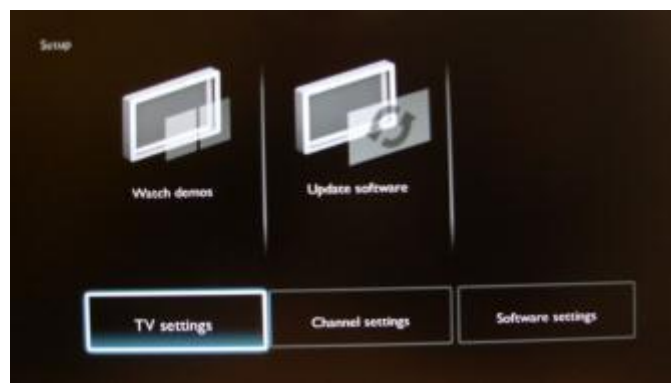
It is important to know the state of the TV before starting the installation. For this set, there are 2 options. If click on setup, you can see one of two possibilities.



The menu below will only show when 'Channel install' is set to 'ON'.



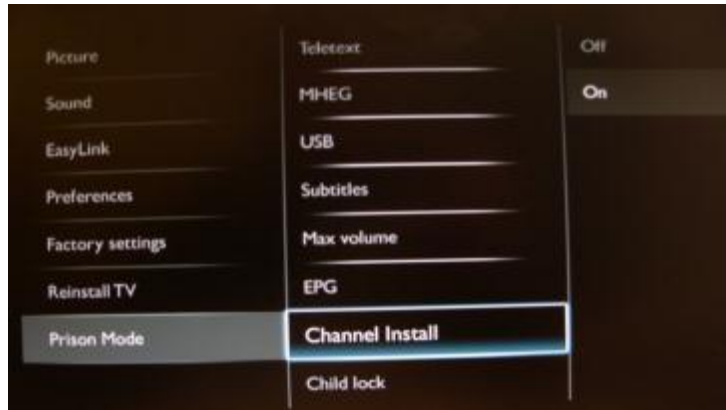
If "Channel install" is set to 'OFF', the TV menu will look as shown below.



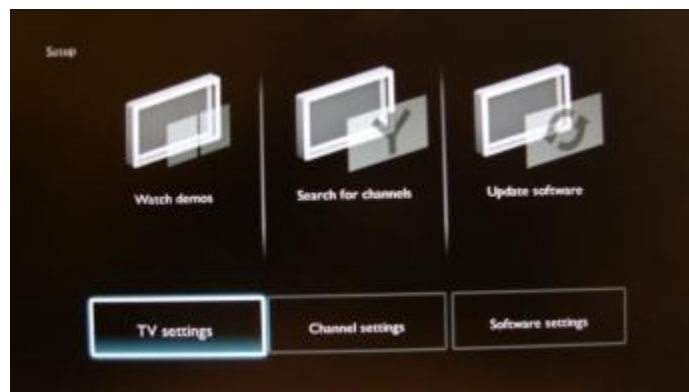
## 3. Re-install TV

All settings should be made with the 22AV8573 (yellow master remote)

To re-install the TV, please press MENU (Home button) and go to 'Prison Mode'. In that menu, go the option 'Channel Install' and select 'ON' and press the 'OK' button on the remote control. Exit this menu by pressing MENU (Home button). Please do a power cycle on the TV.



After the set is powered on, please press the 'RC5 Guest' button on the remote control. Then press 'MENU' on the remote control.



Please select 'TV settings' and press 'OK' on the remote control to access the next menu.



Confirm the reinstallation of the TV by selecting 'Reinstall TV'. Select the option 'Start now' and press 'OK' on the remote control to start the reinstallation of the TV. After this, the Installation wizard will appear.

## 4. Installation wizard.

When you turn on the TV for the first time, or you have reinstalled the TV, you will see the following screen. Here you will need to select the desired language.

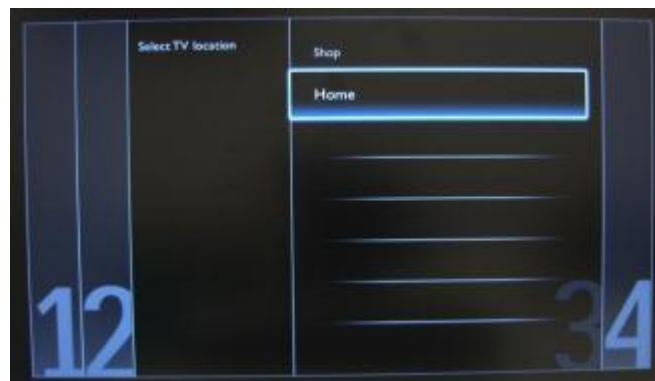


After this, you get the option to select the country. Depending on the country selection, some pre-defined settings will be activated.


*Note: If you are experiencing some issues after selecting your country, please select 'Others' in the menu.*

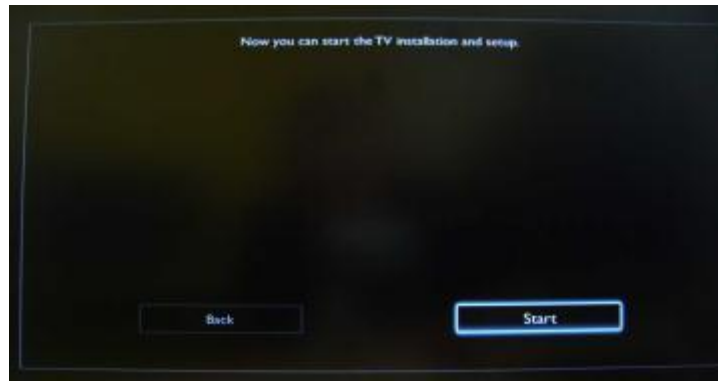


On the next page, you can select if you want to use the set in a 'Shop' mode, or 'Home' mode. If you select 'Shop', an 'e-sticker' banner will be displayed on the TV. This is for commercial purpose only.

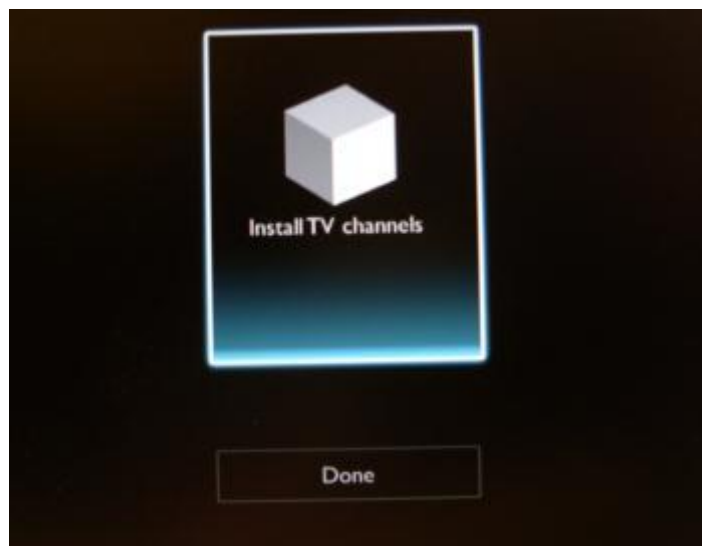


On the following page we can start the channel installation wizard. You can also press 'Back' to correct any previous setting.

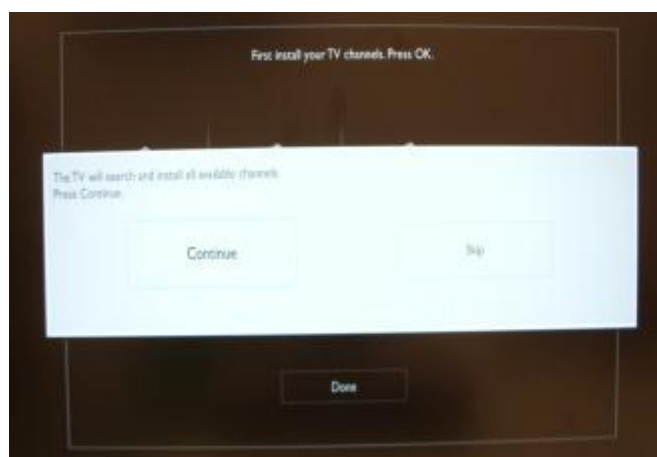
 *Note: On this model you cannot have DVB-T and DVB-C channels at the same time!*



For the channel installation, we need to select 'Install TV channels' and press 'OK'.



After this, you can select 'Continue' and press 'OK' again.

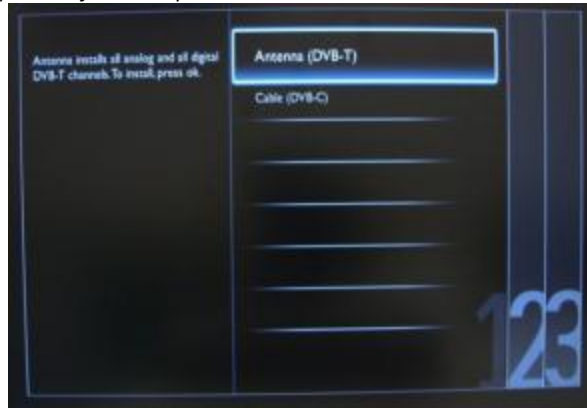


Here you can select the type of channels you would like to install.

1. Antenna (DVB-T) + analogue channels
2. Cable (DVB-C)+ analogue channels

*Note: The installation wizard is identical for DVB-T and DVB-C.*

*Note: The analogue channels can be skipped in a future step.*



It is advisable to check the settings before starting the search.



The first option in the settings page is the 'Frequency scan'.

This has 2 options:

- 'Quick': this is a fast method to search channels but it might skip some channels (depending on the network).
- 'Full': the scan will search on all frequencies and will store all channels available. This is the safe method if you don't know the network parameters, but it takes more time.





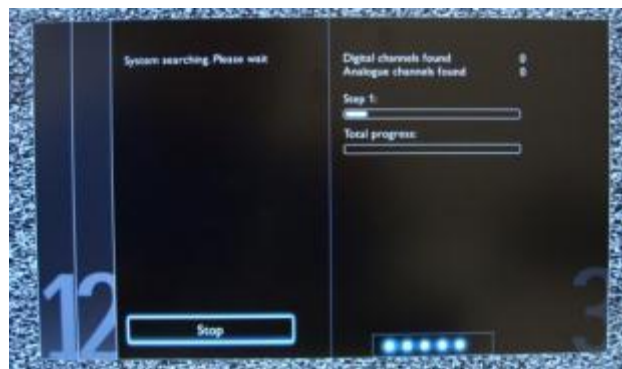
The second option in the settings page is 'Analogue Channel'.

If you select 'Off', the set will not search for analogue channels. If you select 'On', the analogue channels will be part of the search.



The last option is 'Reset'. This will reset the search settings to default. After you have checked or changed settings, you can select 'Done' and select 'Start' to start the channel search.

During the channel search you can see the progress bar and how many channels are found at that time.



When the search is done, you should see 'Channel search complete' and a summary of the channels found. In this case:

Digital channels found: 53

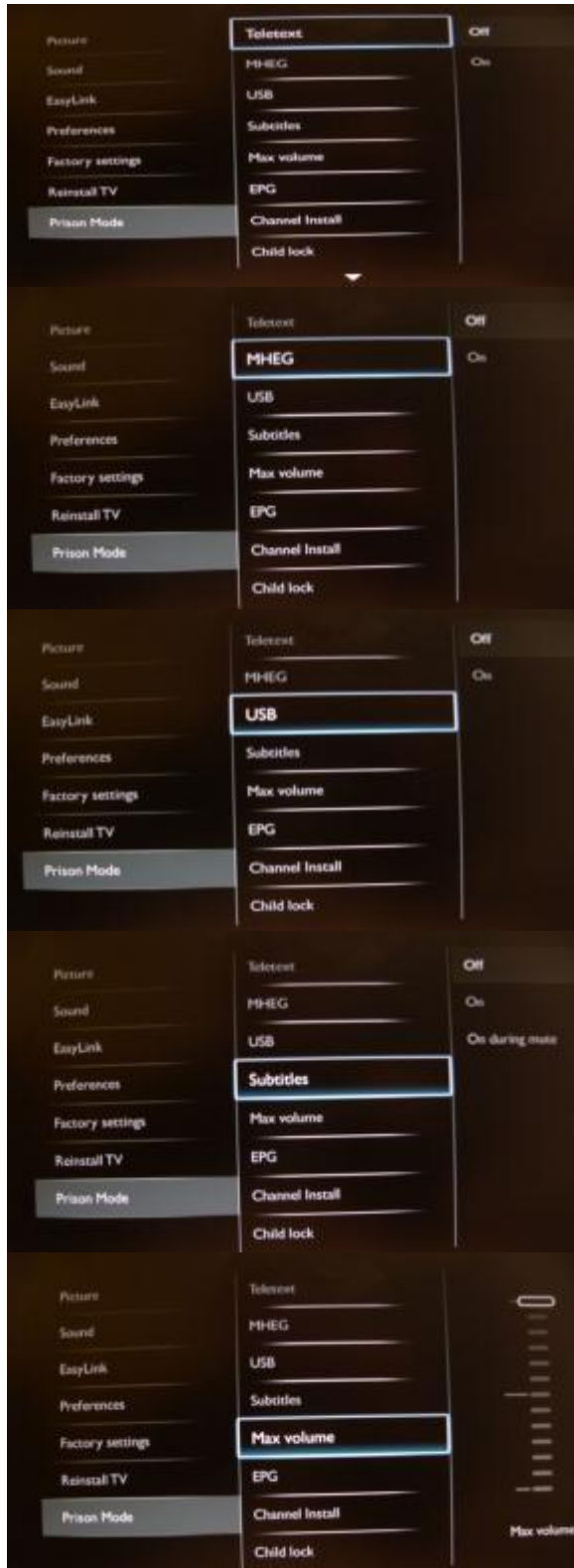
Analogue channels found: 0

Press the 'OK' button on remote control to finish the search. When 'Done' please confirm with 'OK'.



## 5. Prison Mode

Below you can find all the menu options available in the Prison Mode menu.



[Off]: Disables teletext.  
[On]: Enables teletext.

[Off]: Disables MHEG.  
[On]: Enables MHEG.

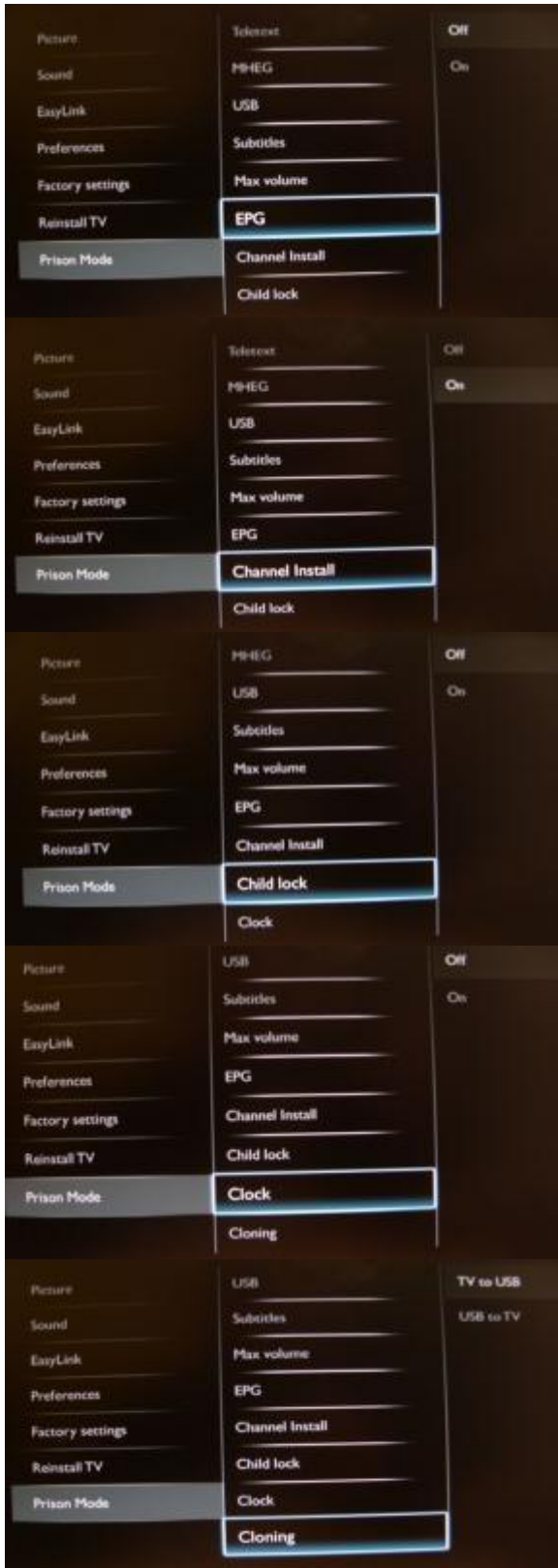
[Off]: Disables USB multimedia function.  
[On]: Enables USB multimedia function.

*Note: this feature is not influencing the cloning and/or software upgrade functionality via USB.*

[Off]: Disables subtitles.  
[On]: Enables subtitles.  
[On during mute]: Displays subtitles when audio is muted.

This specifies the maximum allowable volume level of the TV.

*Note: Selectable value from 00 up to 60.*



[Off]: Disables EPG.

[On]: Enables EPG.

*Note: EPG stands for Electronic Program Guide.*

[OFF]: This will disable the channels installation option from the menu.

[ON]: This will enable the channels installation option from the menu; this will also give you the option to reinstall TV.

Block certain channels by locking the TV controls.

[OFF]: Disables on screen clock

[ON]: Enables on screen clock

USB to TV: Loads the TV configuration data from an USB device to the TV set.

TV to USB: Loads the TV configuration data from the TV set to a USB device.

*Note: USB device needs to be formatted as FAT32.*

Before exiting from the prison mode it is advisable to check if the 'Channel Install' option is 'Off' again, to prevent changes in the channel installation.

Restart the TV to activate changed options. Verify if the set is working properly with the settings that you have changed. After checking, you can download the settings to a USB stick so you can clone it to another TV.

## Free Manuals Download Website

<http://myh66.com>

<http://usermanuals.us>

<http://www.somanuals.com>

<http://www.4manuals.cc>

<http://www.manual-lib.com>

<http://www.404manual.com>

<http://www.luxmanual.com>

<http://aubethermostatmanual.com>

Golf course search by state

<http://golfingnear.com>

Email search by domain

<http://emailbydomain.com>

Auto manuals search

<http://auto.somanuals.com>

TV manuals search

<http://tv.somanuals.com>