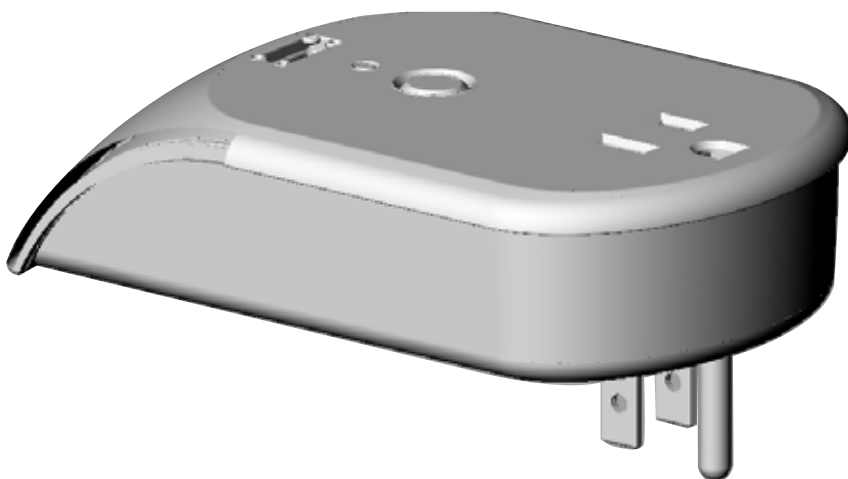


Register your product and get support at
www.philips.com/welcome

SPS8010B/17



User manual

PHILIPS

1 Important safety instructions

This manual contains important information about the Philips automatic charger. Read it carefully before you start the installation and setup.

Warning

- Do not operate your automatic charger near the rain or wet areas.
- Do not operate your automatic charger if liquid of any kind is spilled onto or inside the unit.
- Do not disassemble or repair.
- Do not expose your automatic charger to direct sunlight or place it near wall heaters, space heaters, or enclosed space prone to temperature increase.
- The Philips automatic charger requires a properly grounded outlet for safety and to protect the connected equipment. If you are not sure whether your home's electrical wiring has proper grounding, consult a qualified electrician.

Caution

- Risk of electrical shock! Not for use outdoors or in other wet or damp areas, with aquariums, in hazardous environments requiring failsafe performance (such as nuclear facilities or aircraft), or for medical or life support equipment.

Notice for USA

This equipment has been tested and found to comply with the limits for a Class B digital device, pursuant to part 15 of the FCC Rules. These limits are designed to provide reasonable protection against harmful interference in a residential installation. This equipment generates, uses and can radiate radio frequency energy and, if not installed and used in accordance with the instruction manual, may cause harmful interference to radio communications.

However, there is no guarantee that interference will not occur in a particular installation. If this equipment does cause harmful interference to radio or television reception, which can be determined by turning the equipment off and on, the user is encouraged to try to correct the interference by one or more of the following measures:

- Relocate the receiving antenna.
- Increase the separation between equipment and receiver.
- Connect the equipment into an outlet on a circuit different from that to which the receiver is connected.
- Consult the dealer or an experienced radio/TV technician for help.

Recycling



Your product is designed and manufactured with high quality materials and components, which can be recycled and reused.

Never dispose of your product with other household waste. Please inform yourself about the local rules on the separate collection of electrical and electronic products. The correct disposal of your old product helps prevent potentially negative consequences on the environment and human health.

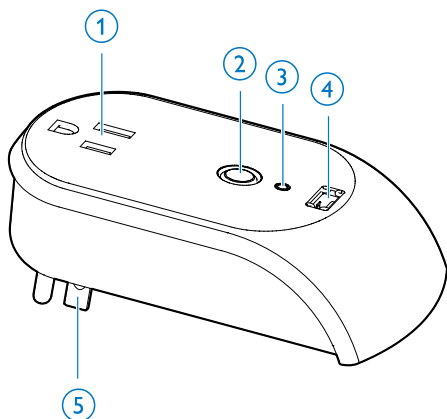
The packaging of this product is intended to be recycled. Contact your local authorities for information about how to recycle the packaging.

2 Your automatic charger

Congratulations on your purchase and welcome to Philips!

To fully benefit from the support that Philips offers, register your product at www.philips.com/welcome.

Overview



- ① AC outlet
- ② POWER button
- ③ POWER indicator light
- ④ USB charging port
- ⑤ AC plug

3 Charge your devices

Note

- To avoid any potential hazard, use the power source supplied by your local authorities.
- The USB charging port is not compatible with iPad.

- 1 Plug this charger into a properly grounded outlet.
- 2 Connect your device to the AC outlet with a proper charging adaptor (not included) or to the USB charging port with a proper USB cable (not included).
- 3 Press **POWER** button.
 - ↳ The **POWER** indicator light is on.
 - ↳ The connected device is charged for six hours continuously.

Tip

- The charger fully turns off automatically after six hours.
- If one device is fully charged within six hours and another device needs to be charged, you can press **POWER** button, the charger starts to work for another six hours continuously and the **POWER** indicator light flashes for three times to confirm.
- If the connected device is not fully charged after six hours, repeat **Step 3**.

4 Limited warranty

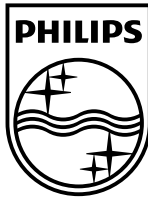
Limited One-Year Warranty

Philips warrants that this product shall be free from defects in material, workmanship and assembly, under normal use, in accordance with the specifications and warnings, for a period of one year from the date of purchase.

This warranty does not cover damages (a) as a result of an accident; (b) resulting from the use of parts not manufactured or sold by Philips; (c) or resulting from modification of the surge protector. After any repair or modification of the surge protector by a facility not authorized by Philips, any problems that arise will not be remedied under this warranty.

These warranties extend only to the original purchaser of the product, and are not transferable. To exercise your rights under this warranty, you must provide proof of purchase in the form of an original sales receipt that shows the product name and the date of purchase.

For customer support or to obtain warranty service, please visit our website www.philips.com/support. There are no other express or implied warranties. Philips' liability is limited to repair or, at its sole option, replacement of the product. Incidental, special and consequential damages are disclaimed where permitted by law. This warranty gives you specific legal rights. You may also have other rights that vary from state to state.



© 2012 Koninklijke Philips Electronics N.V.
All rights reserved.
SPS8010B_UM_17_V1.0



Free Manuals Download Website

<http://myh66.com>

<http://usermanuals.us>

<http://www.somanuals.com>

<http://www.4manuals.cc>

<http://www.manual-lib.com>

<http://www.404manual.com>

<http://www.luxmanual.com>

<http://aubethermostatmanual.com>

Golf course search by state

<http://golfingnear.com>

Email search by domain

<http://emailbydomain.com>

Auto manuals search

<http://auto.somanuals.com>

TV manuals search

<http://tv.somanuals.com>