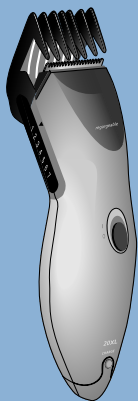




20XL Rechargeable Cord/Cordless Hair Clipper

Instructions for Use



If you need help, answers
or service, please call us at
1-800-243-3050 or visit our
website www.norelco.com



IMPORTANT SAFETY INSTRUCTIONS

When using an electric Hair Clipper, basic safety precautions should always be followed, including the following:

READ ALL INSTRUCTIONS BEFORE USING THIS APPLIANCE.

DANGER

To reduce the risk of electric shock:

1. Do not reach for a clipper that has fallen into water. Unplug immediately.
2. Do not use while bathing or in a shower.
3. Do not place or store clipper where it can fall or be pulled into a tub or sink. Do not place in or drop into water or other liquid.
4. Always unplug clipper from the electrical outlet immediately after using, except when clipper is (re)charging.
5. Unplug clipper before cleaning.

WARNING

To reduce the risk of burns, fire, electric shock, or injury to persons:

1. Close supervision is necessary when clipper is used by, on, or near children or invalids.
2. Use clipper for its intended household use as described in this manual. Do not use attachments not recommended by Philips Electronics North America Corporation.
3. Never operate clipper if it has a damaged cord or plug, if it is not working properly, if it has been dropped or damaged or dropped into water. Return clipper to an Authorized Norelco Service Location for examination and repair.

4. Keep the cord away from heated surfaces.
5. Never operate clipper with the air openings blocked or while on a soft surface, such as a bed or couch, where the air openings may be blocked. Keep the air openings free of lint, hair and the like.
6. Never drop or insert any object into any opening.
7. Do not plug in clipper outdoors or operate where aerosol (spray) products are being used or where oxygen is being administered.
8. Do not use clipper with a damaged or broken cutter or comb, or with teeth missing from the blades, as injury may occur.
9. Always attach plug to clipper first, then to outlet. Be certain that plug is inserted firmly into clipper. To disconnect, turn ON/OFF switch to OFF position, then remove plug from outlet.
10. To prevent possible damage to the cord, do not wrap cord around clipper.
11. Never put clipper in direct sunlight or store at a temperature above 140°F.
12. Do not use in the presence of infectious disease.

SAVE THESE INSTRUCTIONS

IMPORTANT BATTERY DISPOSAL INFORMATION

When discarding your Hair Clipper:
THIS NORELCO HAIR CLIPPER CONTAINS A NICKEL-CADMIUM RECHARGEABLE BATTERY WHICH MUST BE RECYCLED OR DISPOSED OF PROPERLY. See Battery Removal instruction sheet for battery disposal information.

CAUTION:

- Battery should be removed only when Hair Clipper is to be discarded.
- Make sure Hair Clipper is unplugged before dismantling for battery removal.
- For any questions regarding servicing of your

Hair Clipper, contact an Authorized Norelco Service Location.

PRODUCT ASSISTANCE

For assistance or the Authorized Norelco Service Location nearest you, call toll free:

1-800-243-3050
or visit our website: www.norelco.com

Authorized Norelco Service Location information is available 24 hours a day, 7 days a week.

IMPORTANT

Like many new products, your Norelco Hair Clipper may take a little getting used to. If you are using a hair clipper for the first time, or if you've used a different brand, take a moment to familiarize yourself with your new Norelco Hair Clipper.

The comfort-hold design allows for ease of use making the Norelco Hair Clipper perfect for quick trims or a more thorough hair cut. When you first use your Hair Clipper, you may want to begin at the highest (longest) setting (#7) to prevent trimming off too much hair. For best results, comb hair often as you trim—this will help to keep sides, bangs and neckline even. As you become more familiar with your Norelco Hair Clipper, you will want to try the different hair length settings... for precise, even trims and cuts.

VOLTAGE

This Hair Clipper operates only on 110-120V AC. In North America, Central America, and South America, the most common voltage is between 110V and 130V AC. If operating this Hair Clipper on a higher foreign current, a 50-Watt converter should be used. An adapter plug may also be necessary for usage in foreign countries. When traveling overseas, it is suggested that you take all adapter plugs with you to ensure compatibility to most foreign outlet configurations.

FEATURES

Removable Guide
Comb Attachment

3-Dimensional Rounded
Chromium Steel Cutter
Blades

Hair Length Selector

ON/OFF Switch

Charge Indicator Light

Socket for Appliance Plug

Cleaning Brush

Barber's Comb

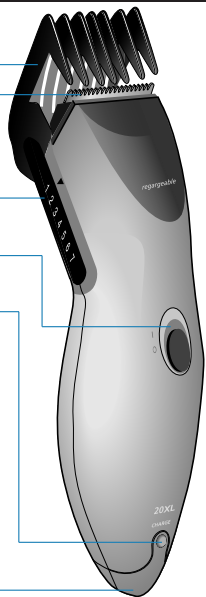
Scissors

Outlet Plug

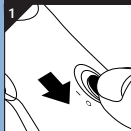
Appliance Plug

• 60-Day
Money-Back Guarantee

• Full Two-Year Warranty



CHARGING



- ▶ Use only the cord provided.
- 1 First time charging requires a full 12 hours. (Re)charge at temperatures between 60°F and 95°F.
- ▶ Charging at lower or higher temperatures adversely affects lifetime of battery.
- 2 Slide ON/OFF switch to OFF (Fig.1).
- 3 Connect cord to Hair Clipper. Plug into 120V AC outlet.
- 4 Charging Indicator Light will light to indicate Hair Clipper is (re)charging.
- ▶ For the longest battery life, do not charge for more than 24 hours. However, (re)charging longer than the required period of time will not harm Hair Clipper.

Recharging

- ▶ Recharging requires 12 hours for approximately 30 minutes of cordless hair clipping.
- ▶ If Hair Clipper has not been used for at least a month, Hair Clipper must be recharged fully before use.
- ▶ For most efficient battery usage, use Hair Clipper until the charge completely runs out, then recharge fully.

CORD/CORDLESS TRIMMING

Corded

- 1 Connect cord provided to Hair Clipper.
- 2 Plug into 120V AC outlet.
- 3 Slide ON/OFF switch ON.
- ▶ Begin trimming.
- 4 When finished, turn hair clipper OFF and unplug.
- ▶ It is not recommended that this Hair Clipper be used exclusively as a corded Hair Clipper. Continual use as a corded Hair Clipper, as well as continually charging Hair Clipper, will reduce life of battery.

Cordless

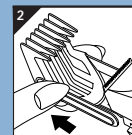
- 1 Charge according to directions.
- 2 Unplug cord from outlet and then from unit.
- 3 Slide ON/OFF switch ON and begin trimming.

NOTE: If battery has completely run out, you can return to corded trimming. Connect cord to Hair Clipper and turn ON. If Hair Clipper does not start immediately when plugged in, turn Hair Clipper OFF. Wait approximately 1 minute. Turn back ON and begin trimming.

GUIDE COMB ATTACHMENT

The Guide Comb may be removed if you are:

- ▶ Defining/outlining hair line edges
- ▶ Trimming nape of neck
- ▶ Trimming with a comb or fingers



To Remove Guide Comb

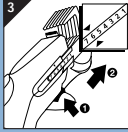
- 1 Be certain Hair Clipper is in OFF position.
- 2 Push the Hair Length Selector and slide the Guide Comb to the last setting, then gently pull off clipper (Fig. 2). Position fingers at base of Guide Comb Attachment to help remove Guide Comb

To Replace Guide Comb

- 1 Be certain Hair Clipper is in OFF position.
- 2 Slide Guide Comb back on Clipper.

NOTE: The Guide Comb can be placed on the Hair Clipper only one way.

HAIR LENGTH SELECTOR, WITH GUIDE COMB



IMPORTANT

The Hair Length Selector allows you to adjust to seven different hair lengths, so that you may achieve the exact length and look you want.

- 1 To adjust settings, push Hair Length Selector to desired setting.
- 2 Hair Length Selector will “click” and automatically lock into place at each setting (Fig. 3).
 - ▶ Start at higher setting (#6 or #7), to prevent trimming off too much hair.
 - ▶ As you become familiar with the settings, adjust Hair Length Selector to desired trimming length (see settings below).

▶ SETTINGS

7	leaves hair approximately	21 mm/.84	inches	in length
6	leaves hair approximately	18 mm/.72	inches	in length
5	leaves hair approximately	15 mm/.6	inches	in length
4	leaves hair approximately	13 mm/.52	inches	in length
3	leaves hair approximately	10 mm/.4	inches	in length
2	leaves hair approximately	7 mm/.28	inches	in length
1	leaves hair approximately	4 mm/.16	inches	in length

TRIMMING

▶ Before Trimming Hair

- 1 Be certain Hair Clipper is clean (free of hair and debris).

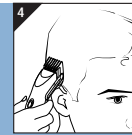
NOTE: If cutter blades are running slowly or do not move, they may be dirty and clogged. Clean following MAINTENANCE instructions.

- 2 Seat person having hair trimmed so that the top of their head is at your chest height. Place towel around their neck.
- 3 Comb hair well to remove all tangles. It is not necessary to wash hair before trimming. For best results, use on dry hair.
- 4 For accurate cutting control, hold Hair Clipper in a comfortable grip. This is important for a precise, even cut.
- 5 For best results, comb hair often during trim to be certain the cut is even.
- 6 If using Hair Clipper for the first time, trim only a small amount of hair at a time, until you become comfortable with Hair Clipper and the Hair Length Selector.

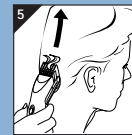
IMPORTANT: When using Hair Clipper without Comb Attachment, use a slow, smooth motion to prevent trimming off more hair than desired.

▶ Trimming Your Hair

- 1 Use Hair Clipper with Guide Comb.
- 2 Comb hair so that it falls into its natural direction.
- 3 Begin at highest setting (#7) on the Hair Length Selector.
 - ▶ After you are familiar with the Hair Clipper, you may easily choose between the 7 settings for your desired length.

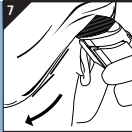


- 4 Hold Hair Clipper with Guide Comb flat against the scalp (Fig. 4).
- 5 Start at the sides of the head. Move Hair Clipper up slowly against direction of hair, lifting it up and outward through hair, cutting a small amount at a time.
- 6 Continue trimming at neck and back of head (Fig. 5).
- 7 If you want hair shorter, change Hair Length Selector to a lower setting and follow same steps.



▶ Trimming Top Of Head

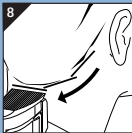
- 1 Remove Guide Comb Attachment.
- 2 Comb hair forward over eyes.
- 3 Using barber comb, lift a small section of hair at a time and grasp hair between two fingers.
 - ▶ The amount of hair you wish to cut should extend beyond your fingers (Fig. 6).
- 4 Trim and blend hair using scissors or Hair Clipper.
- 5 Continue this procedure, working from the front to the back of head.
 - ▶ As you work to the back, you may gradually cut hair shorter by holding fingers closer to head when grasping sections of hair.
- 6 Comb hair often to remove trimmed hair and to check for uneven areas.



▶ **Outlining**

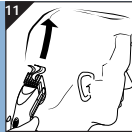
Outlining helps to give a smooth, well-groomed line along edge of hair.

- 1 Remove Guide Comb from Hair Clipper.
- 2 Comb hair so that it falls into its natural direction.
- 3 Hold Hair Clipper over ears with corner edge of Hair Clipper against hair line (Fig. 7).
- 4 Angle upper edge of Hair Clipper at a safe distance from top of ear. Slowly and carefully follow desired outline of hair over and behind ears and down sides of neck.
- 5 For longer hair styles, where hair is worn over the ears, use scissors to trim off as much hair as desired.
- 6 For defining sideburns and back of neck, hold Hair Clipper as shown against the skin and move it down slowly (Fig. 8).

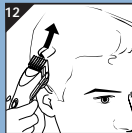


▶ **Short Cut**

- 1 Use Hair Clipper with Guide Comb.
- 2 Choose desired setting on Hair Length Selector.
- 3 Cut hair against direction in which it grows starting from the front to crown of head (Fig. 9).
- 4 Cut up sides to crown of head (Fig. 10).



- 5 Cut up the back to the crown (Fig. 11).
- 6 If necessary, repeat this cutting to be certain hair is uniform in length.
- 7 For smooth, even cutting, especially with coarse, heavy hair, allow Hair Clipper to cut through hair - do not force it through hair faster than it can cut.
- 8 Finish this cut using the OUTLINING method to smooth out hair line.

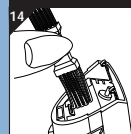


▶ **Crew Cut**

- 1 Use Hair Clipper with Guide Comb.
- 2 Begin with highest (#7) setting on Hair Length Selector.
- ▶ You may want to adjust this setting as you become familiar with the settings.
- 3 Hold Guide Comb flat against head and slowly move it through hair.
- 4 Cut hair up the back to crown of head.
- 5 Cut straight up sides and from back of ears in a line even with sides of face. Leave hair long on the crown (Fig. 12).
- 6 To give a "flat top" look, hair on top of head must be cut over a comb or between fingers (Fig. 13)
- 7 Lift hair with barber comb or fingers to desired length and cut hair with scissors or with Hair Comb hair and check for uneven spots.
- 8 Finish this cut using the OUTLINING method for sideburns and neckline.



MAINTENANCE



▶ **During Usage**

- 1 While trimming, hair will collect on top of Hair Clipper. Frequently shake Hair Clipper lightly over wastebasket and hair will easily fall away.
- ▶ Do not tap on hard surface.
- 2 If too much hair collects while trimming, switch Hair Clipper Off. Remove Guide Comb and lightly shake or brush hair from Hair Clipper and Guide Comb with cleaning brush provided.
- 3 If Hair Clipper slows down while trimming, the cutters may need to be cleaned or replaced.
- 4 Cutter Blades do not need to be oiled.

▶ **After Usage**

- ▶ It is important to clean out Hair Clipper after each use.
- 1 Switch Hair Clipper OFF.
- 2 Remove Guide Comb and lightly shake or brush hair from Hair Clipper and Guide Comb.
- 3 Clean cutters and inside of Hair Clipper with long bristles of brush (Fig. 14).

IMPORTANT

- ▶ Never use Hair Clipper with a damaged or broken cutter or Guide Comb.
- ▶ Clean Hair Clipper regularly.
- ▶ Do not apply pressure to cutters. Do not touch cutters with hard objects as this may dent or damage cutter blades.
- ▶ Do not use sharpeners as this will damage your cutter blades and will adversely affect the cutting performance.
- ▶ When cutter blades eventually become dull, they must be replaced. Do NOT use sharpeners. There are no user serviceable parts.

For cutter blade replacement information, call 1-800-243-3050.



60-DAY MONEY-BACK GUARANTEE

If you are not fully satisfied with your Norelco Home Hair Cutting Clipper, Norelco will refund you the full purchase price.

The Clipper must be shipped by insured mail, insurance prepaid and have the sales slip indicating purchase price and the date of purchase enclosed. Clipper must be postmarked no later than 60 days after date of purchase. Norelco reserves the right to verify the purchase price of the product and limit refunds not to exceed suggested retail price.

Send dated sales slip, your complete name and address as indicated below, and the product, prepaid to: Norelco Consumer Products Company, A Division of Philips Electronics North America Corporation, P.O. Box 1116, Skokie, IL 60076. Please allow 4-6 weeks for delivery of check.

NAME _____

Please Print

ADDRESS _____

CITY _____

STATE _____ ZIP _____

TELEPHONE NO. (_____) _____
Area Code

REASON FOR RETURNING _____

FULL TWO YEAR WARRANTY

Philips Electronics North America Corporation warrants each new Norelco Product, Model 20XL (except cord and cutters), against defects in materials or workmanship for a period of two years from the date of purchase, and agrees to repair or replace any defective product without charge.

IMPORTANT: This warranty does not cover damage resulting from accident, misuse or abuse, lack of reasonable care, the affixing of any attachment not provided with the product or loss of parts or subjecting the product to any but the specified voltage.* Use of unauthorized replacement parts will void this warranty.

PHILIPS ELECTRONICS NORTH AMERICA CORPORATION WILL NOT PAY FOR WARRANTY SERVICE PERFORMED BY A NON-AUTHORIZED REPAIR SERVICE AND WILL NOT REIMBURSE THE CONSUMER FOR DAMAGE RESULTING FROM WARRANTY SERVICE PERFORMED BY A NON-AUTHORIZED REPAIR SERVICE.

NO RESPONSIBILITY IS ASSUMED FOR ANY SPECIAL, INCIDENTAL OR CONSEQUENTIAL DAMAGES.

In order to obtain warranty service, simply take or ship the product postage prepaid to the nearest Authorized Norelco Service Location. It is suggested that for your protection you return shipments of product by insured mail, insurance prepaid. Damage occurring during shipment is not covered by this warranty.

NOTE: No other warranty, written or oral, is authorized by Philips Electronics North America Corporation.

This warranty gives you specific legal rights, and you may also have other rights which vary from state to state. Some states do not allow the exclusion or limitation of incidental or consequential damages, so the above exclusion and limitations may not apply to you.

*Read enclosed instructions carefully.

Manufactured for:
Norelco Consumer Products Company
A Division of Philips Electronics North America Corporation
1010 Washington Blvd.
Stamford, CT 06912-0015

MADE IN HUNGARY.



This symbol on the product's nameplate means it is listed by Underwriters' Laboratories, Inc.

LISTED

Norelco is a Registered Trademark of Philips Electronics North America Corporation.

PHILIPS and Philips Shield are Registered Trademarks of Koninklijke Philips Electronics N.V.

© 1999 Philips Electronics North America Corporation.
All Rights Reserved.



Free Manuals Download Website

<http://myh66.com>

<http://usermanuals.us>

<http://www.somanuals.com>

<http://www.4manuals.cc>

<http://www.manual-lib.com>

<http://www.404manual.com>

<http://www.luxmanual.com>

<http://aubethermostatmanual.com>

Golf course search by state

<http://golfingnear.com>

Email search by domain

<http://emailbydomain.com>

Auto manuals search

<http://auto.somanuals.com>

TV manuals search

<http://tv.somanuals.com>