

FULL TWO YEAR WARRANTY

Philips Electronics North America Corporation warrants each new Norelco Product, Model 35LC or 25LC (except cord and cutters), against defects in materials or workmanship for a period of two years from the date of purchase, and agrees to repair or replace any defective product without charge.

IMPORTANT: This warranty does not cover damage resulting from accident, misuse or abuse, lack of reasonable care, the affixing of any attachment not provided with the product or loss of parts or subjecting the product to any but the specified voltage.* Use of unauthorized replacement parts will void this warranty.

PHILIPS ELECTRONICS NORTH AMERICA CORPORATION WILL NOT PAY FOR WARRANTY SERVICE PERFORMED BY A NON-AUTHORIZED REPAIR SERVICE AND WILL NOT REIMBURSE THE CONSUMER FOR DAMAGE RESULTING FROM WARRANTY SERVICE PERFORMED BY A NON-AUTHORIZED REPAIR SERVICE.

NO RESPONSIBILITY IS ASSUMED FOR ANY SPECIAL, INCIDENTAL OR CONSEQUENTIAL DAMAGES.

In order to obtain warranty service, simply take or ship the product postage prepaid to the nearest Norelco Service Store. Warranty service is available at any Authorized Norelco Service Location. It is suggested that for your protection you return shipments of product by insured mail, insurance prepaid. Damage occurring during shipment is not covered by this warranty.

NOTE: No other warranty, written or oral, is authorized by Philips Electronics North America Corporation.

This warranty gives you specific legal rights, and you may also have other rights which vary from state to state. Some states do not allow the exclusion or limitation of incidental or consequential damages, so the above exclusion and limitations may not apply to you.

*Read enclosed instructions carefully.

Manufactured for:
Norelco Consumer Products Company
A Division of Philips Electronics North America Corporation
1010 Washington Blvd.
Stamford, CT 06912-0015

MADE IN AUSTRIA.

 This symbol on the product's nameplate means it is listed by Underwriters' Laboratories, Inc.

Norelco is a Registered Trademark of Philips Electronics North America Corporation.

PRO•CUT, PRO•CUT & Design, and One Step Select are Trademarks of Philips Electronics North America Corporation.

© Philips Electronics North America Corporation 1995

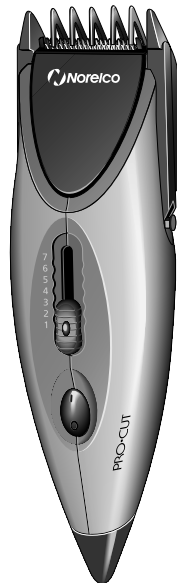


FOR A PRECISE CUT, EVERYTIME.



PRO•CUT

Home Hair Cutting System



35LC/25LC
Corded Clipper

IMPORTANT SAFETY INSTRUCTIONS

When using an electric Hair Clipper, basic safety precautions should always be followed, including the following:

READ ALL INSTRUCTIONS BEFORE USING THIS APPLIANCE

DANGER

To reduce the risk of electric shock:

1. Do not reach for a clipper that has fallen into water. Unplug immediately.
2. Do not use while bathing or in a shower.
3. Do not place or store clipper where it can fall or be pulled into a tub or sink. Do not place in or drop into water or other liquid.
4. Always unplug this clipper from the electrical outlet immediately after using.
5. Unplug clipper before cleaning.

WARNING

To reduce the risk of burns, fire, electric shock or injury to persons:

1. Close supervision is necessary when clipper is used by, on, or near children or invalids.

2. Use clipper for its intended use as described in this manual. Do not use attachments not recommended by Philips Electronics North America Corporation.
3. Never operate clipper if it has a damaged cord or plug, if it is not working properly, if it has been dropped or damaged or dropped into water. Return clipper to an Authorized Norelco Service Location for examination and repair.
4. Keep the cord away from heated surfaces.
5. Never operate clipper with the air openings blocked or while on a soft surface, such as a bed or couch, where the air openings may be blocked. Keep the air openings free of lint, hair and the like.
6. Never drop or insert any object into any opening.
7. Do not plug in clipper outdoors or operate where aerosol (spray) products are being used or where oxygen is being administered.
8. Do not use clipper with a damaged or broken cutter or comb, or with teeth missing from the blades, as injury may occur.
9. Always attach plug to clipper first, then to outlet. Be certain that plug is inserted firmly into clipper. To disconnect, turn ON/OFF switch to OFF position, then remove plug from outlet.
10. To prevent possible damage to the cord, do not wrap cord around clipper.
11. Never put clipper in direct sunlight or store at a temperature above 140° F.
12. Do not use in the presence of infectious disease.

SAVE THESE INSTRUCTIONS

FEATURES

Removable Guide
Comb Attachment

3-Dimensional Rounded
Chromium Steel Cutter
Blades

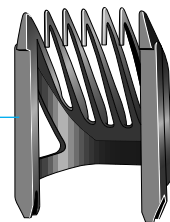
One Step Select 7-Position
Hair Length Selector with
Locking Mechanism

ON/OFF Switch

Complete Step-By-Step
Instructional Video (Model 35LC)

60-Day Money-Back Guarantee

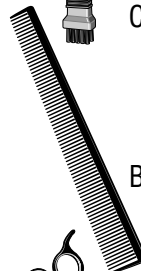
Full Two-Year Warranty



Lubricating Oil



Cleaning Brush



Barber's Comb



Scissors
(Model 35LC)

IMPORTANT

Like many new products, your Norelco Home Hair Cutting System may take a little getting used to. If you are using a hair clipper for the first time, or if you've used a different brand, take a moment to familiarize yourself with your new Norelco Hair Clipper.

For tips and cutting techniques you will find the accompanying Instructional Video (model 35LC only) helpful. This will provide you with actual cutting instructions for creating today's fashionable styles. The comfort-hold design allows for ease of use, making the Norelco Hair Clipper perfect for quick trims or a more thorough hair cut. When you first use your Hair Clipper, you may want to begin at the highest (longest) setting (#7) to prevent trimming off too much hair. For best results, comb hair often as you trim—this will help to keep sides, bangs and neckline even. As you become more familiar with your Norelco Hair Clipper, you will want to try the different hair length settings. . . for precise, even trims and cuts at the touch of a switch.

- For Assistance or the Authorized Norelco Service Location nearest you, call toll free:

1-800-243-7884

or contact one of the Norelco Service Stores listed below.

Atlanta, GA 30309

2221 Peachtree Road N.E.
Suite A
(404) 352-5735

Fullerton, CA 92631

2100 East Valencia Drive
Suite A-1
(714) 447-5332

New York, NY 10017

103 East 41st Street
(212) 687-0718

Roselle, IL 60172

440 North Medinah
(708) 307-3008

San Francisco, CA 94105

566 Mission Street
(415) 227-0225

1. VOLTAGE

This Hair Clipper operates only on 110-120V AC. In North America, Central America, and South America, the most common voltage is between 110V and 130V AC. If operating this Hair Clipper on a higher foreign currency, a 50-Watt converter should be used. An adaptor plug may also be necessary for cord usage in foreign countries. When traveling overseas, it is suggested that you take all adaptor plugs with you to ensure compatibility to most foreign outlet configurations.

Norelco Travel Adaptor Plugs (Model TP5), 50-Watt Converter (Model TC50) or Adaptor/50-Watt Converter Kit (Model TK3) may be purchased at a store near you or at a Norelco Service Store Location.

- Use only the cord provided.

2. TRIMMING

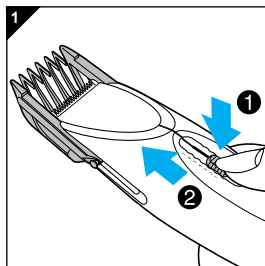
1. Connect cord provided to Hair Clipper.
2. Plug into 120V AC outlet.
3. Slide ON/OFF switch ON.
 - Begin trimming.
4. When finished, turn Hair Clipper OFF and unplug.

3. ONE STEP SELECT 7-POSITION HAIR LENGTH SELECTOR AND REMOVABLE GUIDE COMB ATTACHMENT

IMPORTANT: The Removable Guide Comb Attachment must be in place on the Hair Clipper in order to use the One Step Select Switch.

The One Step Select Switch allows you to adjust to seven different hair lengths, so that you may achieve the exact length and look you want.

1. To adjust settings, push One Step Select Switch to desired setting.



2 SETTINGS

- 7 leaves hair approximately 17 mm in length
- 6 leaves hair approximately 15 mm in length
- 5 leaves hair approximately 13 mm in length
- 4 leaves hair approximately 11 mm in length
- 3 leaves hair approximately 9 mm in length
- 2 leaves hair approximately 7 mm in length
- 1 leaves hair approximately 4 mm in length

2. Hair Length Selector will “click” and automatically lock into place at each setting (Fig. 1).
 - Start at higher setting (#6 or #7), to prevent trimming off too much hair.
 - As you become familiar with the settings, adjust One Step Select Switch to desired trimming length (Fig. 2).

4. GUIDE COMB ATTACHMENT

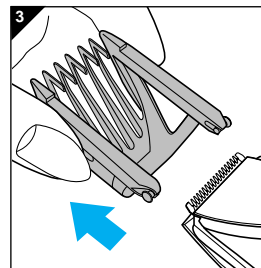
The Guide Comb may be removed if you are:

- defining/outlining hair line edges
- trimming nape of neck
- trimming with a comb or fingers

A. TO REMOVE GUIDE COMB

1. Be certain Hair Clipper is in OFF position.
2. While holding Hair Clipper base with one hand, grasp sides of Guide Comb and gently lift Guide Comb away from Hair Clipper (Fig. 3).

NOTE: One Step Select Switch may be on any setting when removing Guide Comb and when trimming without Guide Comb.



B. TO REPLACE GUIDE COMB

1. Be certain Hair Clipper is in OFF position.
2. Hold Hair Clipper in one hand and replace Guide Comb until it “clicks” into position.

NOTE: The Guide Comb can be placed on the Hair Clipper only one way. If it does not fit properly at first, reverse it.

5. BEFORE TRIMMING HAIR

1. Be certain Hair Clipper is clean (free of hair and debris), properly lubricated and fully charged (see MAINTENANCE).

NOTE: If cutter blades are running slowly or do not move, they may be dirty and clogged. Clean and lubricate following MAINTENANCE instructions.

2. Seat person having hair trimmed so that the top of their head is at your eye level.

■ Place towel around their neck.

3. Comb hair well to remove all tangles. It is not necessary to wash hair before trimming. For best results, use on dry hair.

4. For accurate cutting control, hold Hair Clipper in a comfortable grip. This is important for a precise, even cut.

5. For best results, comb hair often during trim to be certain the cut is even.

6. If using Hair Clipper for the first time, trim only a small amount of hair at a time, until you become comfortable with Hair Clipper and the One Step Select Switch.

IMPORTANT: When using Hair Clipper without Comb Attachment, use a slow, smooth motion to prevent trimming off more hair than desired.

6. TRIMMING YOUR HAIR

1. Use Hair Clipper with Guide Comb.

2. Comb hair so that it falls into its natural direction.

3. Begin at highest setting (#7) on One Step Select Switch.

■ After you are familiar with the Hair Clipper, you may easily choose between the 7 settings for your desired length.

4. Hold Hair Clipper with Guide Comb flat against the scalp (Fig. 4).

5. Start at the sides of the head. Move Hair Clipper up slowly against direction of hair, lifting it up and outward through hair, cutting a small amount at a time.

6. Continue trimming at neck and back of head (Fig. 5).

7. If you want hair shorter, change One Step Select Switch to a lower setting and follow same steps.

7. TRIMMING TOP OF HEAD

1. Use Guide Comb Attachment at lowest setting (#1) or remove it entirely.

2. Comb hair forward over eyes.

3. Using barber comb, lift a small section of hair at a time and grasp hair between two fingers.

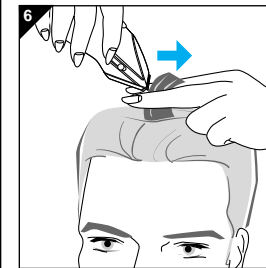
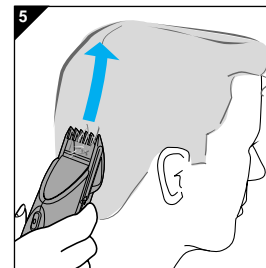
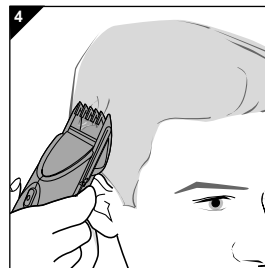
■ The amount of hair you wish to cut should extend beyond your fingers (Fig. 6).

4. Trim and blend hair using scissors or Hair Clipper at lowest setting.

5. Continue this procedure, working from the front to the back of head.

■ As you work to the back, you may gradually cut hair shorter by holding fingers closer to head when grasping sections of hair.

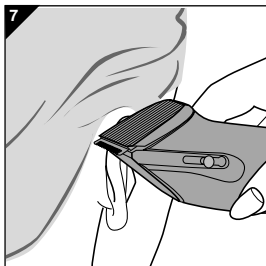
6. Comb hair often to remove trimmed hair and to check for uneven areas.



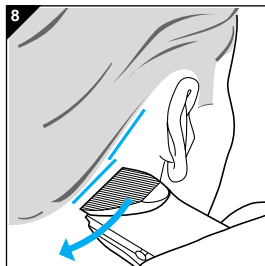
8. OUTLINING

Outlining helps to give a smooth, well-groomed line along edge of hair.

1. Remove Guide Comb from Hair Clipper.
2. Comb hair so that it falls into its natural direction.
3. Hold Hair Clipper over ears with corner edge of Hair Clipper against hair line (Fig. 7).
4. Angle upper edge of Hair Clipper at a safe distance from top of ear. Slowly and carefully follow desired outline of hair over and behind ears and down sides of neck.

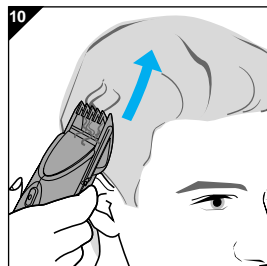
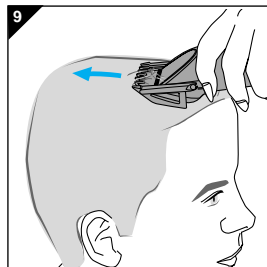


5. For longer hair styles, where hair is worn over the ears, use scissors to trim off as much hair as desired.
6. For defining sideburns and back of neck, hold Hair Clipper as shown against the skin and move it down slowly (Fig. 8).

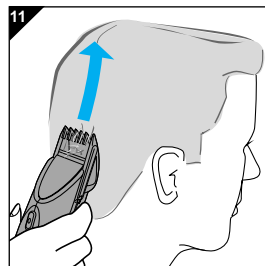


9. SHORT CUT

1. Use Hair Clipper with Guide Comb.
2. Comb hair so that it falls into its natural direction.
3. Choose desired setting on Hair Length Selector.
4. Cut hair against direction in which it grows starting from the front to crown of head (Fig. 9).
5. Cut up sides to crown of head (Fig. 10).
6. Cut up the back to the crown (Fig. 11).

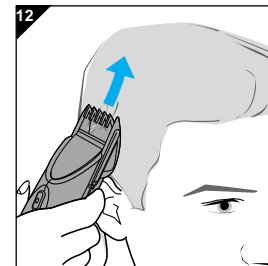


7. If necessary, repeat this cutting to be certain hair is uniform in length.
8. For smooth, even cutting, especially with coarse, heavy hair, allow Hair Clipper to cut through hair - do not force it through hair faster than it can cut.
9. Finish this cut using the OUTLINING method to smooth out hair line.



10. CREW CUT

1. Use Hair Clipper with Guide Comb.
2. Comb hair so that it falls into its natural direction.
3. Begin with highest (#7) setting on One Step Select Switch.
 - You may want to adjust this setting as you become familiar with the settings.
4. Hold Guide Comb flat against head and slowly move it through hair.
5. Cut hair up the back to crown of head.
6. Cut straight up sides and from back of ears in a line even with sides of face. Leave hair long on top from the front to the crown (Fig. 12).



7. To give a "flat top" look, hair on top of head must be cut over a comb or between fingers.
8. Lift hair with comb or fingers to desired length and cut hair with scissors or with Hair Clipper without Guide Comb (Fig. 13).
9. Comb hair and check for uneven spots. Finish this cut using the OUTLINING method for sideburns and neckline.



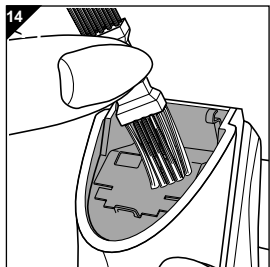
11A. MAINTENANCE

A. DURING USAGE

1. While trimming, hair will collect on top of Hair Clipper. Frequently shake Hair Clipper lightly over wastebasket and hair will easily fall away.
 - Do not tap on hard surface.
2. If too much hair collects while trimming, switch Hair Clipper OFF. Remove Guide Comb and lightly shake or brush hair from Hair Clipper and Guide Comb with cleaning brush provided.
3. If Hair Clipper slows down while trimming, the cutters may need to be oiled (see BLADE MAINTENANCE).

B. AFTER USAGE

- It is important to clean out Hair Clipper after each use.
1. Switch Hair Clipper OFF.
 2. Remove Guide Comb and lightly shake or brush hair from Hair Clipper and Guide Comb.

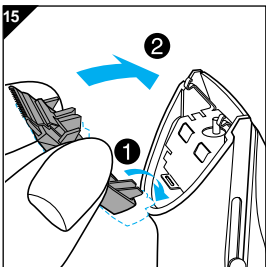


3. Clean cutters and inside of Hair Clipper with long bristles of brush (Fig. 14).
4. Oil the steel blades of cutters after every use with three drops of oil - (see BLADE MAINTENANCE).

11B. BLADE MAINTENANCE

IMPORTANT

- Do not over oil.
- Never use Hair Clipper with a damaged or broken cutter or Guide Comb.
- Hair Clipper should be clean and lubricated.
- Clean Hair Clipper regularly.
- Do not apply pressure to cutters. Do not touch cutters with hard objects as this may dent or damage cutter blades.
- Do not use sharpeners as this will damage your cutter blades and will adversely affect the cutting performance.



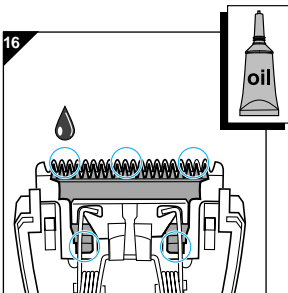
A. AFTER EACH USE

1. Always switch Hair Clipper OFF and remove plug from outlet before cleaning. Never remove or replace Guide Comb with motor ON.
 - To help cutter blades stay sharp longer, it is recommended that you oil blades with the supplied Lubricating Oil or light machine oil.
2. Remove Guide Comb attachment and lubricate outer cutting blades after each use with 3 drops of oil.
3. Spread lightly over blades with finger tip. Replace Guide Comb Attachment.

B. ONCE A MONTH

To keep the cutting unit working properly, it is recommended that you oil the inner portion of the cutting unit with the supplied Lubricating Oil or light machine oil once a month.

1. Remove the Guide Comb Attachment from the Hair Clipper.



2. Gently push cutting unit backward (Fig. 15). Oil the metal blades on the inner side of the cutting unit with three drops of oil (Fig. 16).
3. Click cutting unit back to original position by pushing forward. Replace Guide Comb Attachment.
 - When cutter blades eventually become dull, they must be replaced. Do NOT use sharpeners. There are no user serviceable parts.

For cutter blade replacement information, call 1-800-243-7884.

Free Manuals Download Website

<http://myh66.com>

<http://usermanuals.us>

<http://www.somanuals.com>

<http://www.4manuals.cc>

<http://www.manual-lib.com>

<http://www.404manual.com>

<http://www.luxmanual.com>

<http://aubethermostatmanual.com>

Golf course search by state

<http://golfingnear.com>

Email search by domain

<http://emailbydomain.com>

Auto manuals search

<http://auto.somanuals.com>

TV manuals search

<http://tv.somanuals.com>