

Digital Home Cinema System

LX700



PHILIPS

Important Note

Important notes for users in the U.K.

Mains plug

This apparatus is fitted with an approved 13 Amp plug. To change a fuse in this type of plug proceed as follows:

1. Remove fuse cover and fuse.
2. Fix new fuse which should be a BS1362 5 Amp, A.S.T.A. or BSI approved type.
3. Refit the fuse cover.

If the fitted plug is not suitable for your socket outlets, it should be cut off and an appropriate plug fitted in its place. If the mains plug contains a fuse, this should have a value of 5 Amp. If a plug without a fuse is used, the fuse at the distribution board should not be greater than 5 Amp.

Note: The severed plug must be disposed off to avoid a possible shock hazard should it be inserted into a 13 amp socket elsewhere.

How to connect a plug

The wires in the mains lead are coloured with the following code:

blue = neutral (N)
Brown = live (L)

As these colours may not correspond with the colour markings identifying the terminals in your plug, proceed as follows:

- Connect the blue wire to the terminal marked n or coloured black.
- Connect the brown wire to the terminal marked N or coloured red.
- Do not connect either wire to the earth terminal in the plug, marked E (or \perp) or coloured green (or green and yellow).

Before replacing the plug cover, make certain that the cord grip is clamped over the sheath of the lead - not simply over the two wires.

Copyright in the U.K.

Recording and playback of material may require consent. See Copyright Act 1956 and the Performer's Protection Act 1958 to 1972.

Manufactured under license from Dolby Laboratories. "Dolby", "Prologic" and the double-D symbol are trademarks of Dolby Laboratories. Confidential Unpublished Works. © 1992-1999 Dolby Laboratories, Inc. All rights reserved.

MANUFACTURED UNDER LICENSE FROM DIGITAL THEATER SYSTEMS, INC. US PAT. NO 5,451,942, 5,956,674, 5,974,380, 5,978,762 AND OTHER WORLDWIDE PATENTS ISSUED AND PENDING. "DTS" AND "DTS DIGITAL SURROUND" ARE REGISTERED TRADEMARKS OF DIGITAL THEATER SYSTEMS, INC. COPYRIGHT 1996, 2000 DIGITAL THEATER SYSTEMS, INC. ALL RIGHTS RESERVED.



AVIS : RISQUE DE CHOC ÉLECTRIQUE PAS OUVRIR.



This symbol is intended to alert the user of the presence of uninsulated "dangerous voltage" within the product's encasement that may be of sufficient magnitude to constitute a risk of electric shock to persons.



This symbol is intended to alert the user of the presence of important operating and maintenance (servicing) instructions in the literature accompanying the appliance.

Italia

DICHIARAZIONE DI CONFORMITA'

Si dichiara che l'apparecchio LX-700D Philips risponde alle prescrizioni dell'art. 2 comma 1 del D.M. 28 Agosto 1995 n. 548.

Fatto a Eindhoven

Philips Consumer Electronics
Philips, Glaslaan 2
5616 JB Eindhoven, The Netherlands

Norge

Typeskilt finnes på apparatens underside.

Observer: Nettbryteren er sekundert innkoplet. Den innebygde nettdelen er derfor ikke frakoplet nettet så lenge apparatet er tilsluttet nettkontakten.

For å redusere faren for brann eller elektrisk støt, skal apparatet ikke utsettes for regn eller fuktighet.

CAUTION

Use of controls or adjustments or performance of procedures other than herein may result in hazardous radiation exposure or other unsafe operation.

2 IMPORTANT NOTE

Index

English -----	4
Français -----	17
Español -----	30
Deutsch -----	43
Nederlands -----	56
Italiano -----	69
Svenska -----	82
Dansk -----	95
Suomi -----	108
Português -----	121
Ελληνικά -----	134
Polski -----	147
Русский -----	160

English

Français

Español

Deutsch

Nederlands

Italiano

Svenska

Dansk

Suomi

Português

Ελληνικά

Polski

Русский

Contents

Introduction and General Information

Features	5
Supplied accessories	5
Environmental information	5
Installation	5
Maintenance	5

Functional Overview

Front and Rear panels	6
Remote Control	7

Connections

Connecting the speakers	8
Connecting antennas	9
MW Indoor Loop Antenna	
FM Indoor Antenna	
FM Outdoor Antenna	
Connecting from a DVD and additional components	9

Preparations

Inserting batteries into the remote control	10
Setting up the surround sound system	10
Placing the speakers	
Switching on the system	10

Basic Functions

Selecting the surround mode	11
Selecting the digital sound effect	11
Dimming the display screen	11
Volume control	12
Changing the volume level	
To switch off the volume temporarily	
To listen through the headphones	
Adjusting the tone	12

Other Functions

System Setup	13
Center delay	
Rear delay	
Test tone	
Digital input	
Menu off	
Tuning to radio stations	14
Presetting radio stations	14
Sleep timer setting	14
Night mode functions	14

Troubleshooting

Specifications

Energy Star

As an ENERGY STAR® Partner, Philips has determined that this product meets the ENERGY STAR® guidelines for energy efficiency.



This product complies with the radio interference requirements of the European Community.

Introduction and General Information

Features

The LX700 Digital Home Cinema System creates the same dynamic sound qualities that you find in full-fledged cinemas and incorporates some of the best features in home theatre technology.

Features include:

Building-in DTS and Dolby® Digital decoder, supporting Dolby® ProLogic II and virtual surround

Use the Home Cinema Audio System for a movie-theatre surround sound experience.

Additional Component Connections

Lets you connect other audio and audio/visual components to the Receiver so you can use the system's surround sound speakers.

Night Mode

Lets you compress the dynamic range, reducing the difference in volume between different sounds in Dolby Digital mode.

Sleep Timer

Enables the system to switch to standby mode automatically at a preset time.

Supplied Accessories

- a remote control with two AA batteries.
- a MW loop antenna and an FM wire antenna.
- audio connection cables.
- five satellite speakers, including five speaker cables.
- a passive subwoofer, including a speaker cable.
- a power cable for connection with the main unit.
- 4 speaker brackets and 4 screws,
- 4 mini speaker stands and 8 screws
- Instruction booklet
- Getting Started Guide

If any item is damaged or missing, please contact your retailer or Philips dealer.

Environmental information

All unnecessary packaging has been omitted. We have tried to make the packaging easy to separate into three materials: cardboard (box), polystyrene foam (buffer) and polyethylene (bags, protective foam sheet).

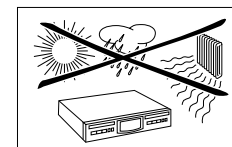
Your system consists of materials which can be recycled and reused if disassembled by a specialized company. Please observe the local regulations regarding the disposal of packaging materials, exhausted batteries and old equipment.

Installation

If you have stacked the components of your system, the receiver must be on top. Place the receiver on a flat, hard, stable surface. Do not cover any vents and leave 10 cm above and 10 cm left and right of the receiver free for ventilation.

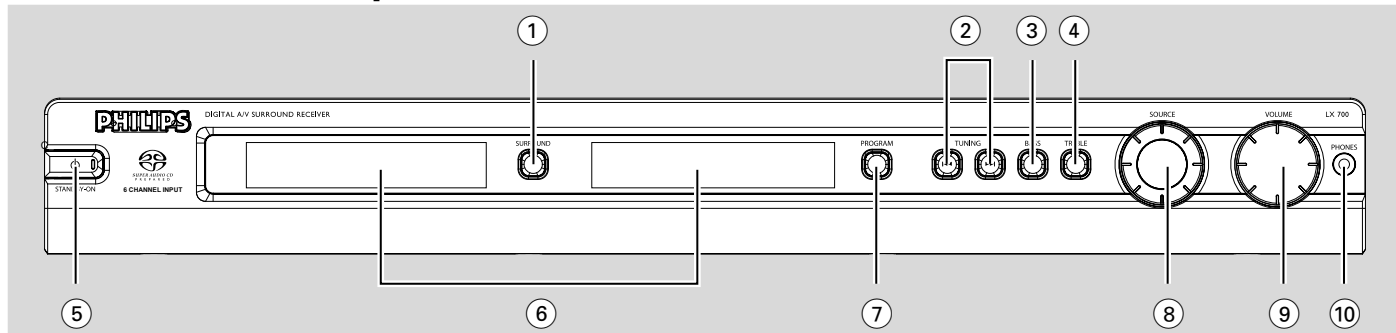
Maintenance

- Do not expose the receiver or batteries to humidity, rain, sand or excessive heat (caused by heating equipment or direct sunlight). Always keep the disc tray closed to avoid dust on the lens.
- Do not use solvents such as benzene, thinner, commercially available cleaners, anti-static spray intended for colour discs.

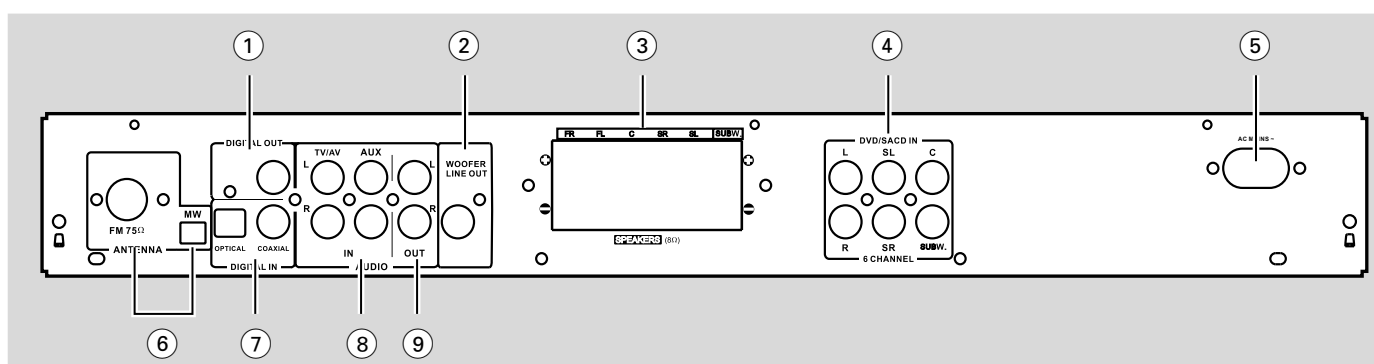


Functional Overview

Front and Rear panels



- ① **SURROUND**
 - to select multichannel surround (Dolby Digital, DTS, Dolby Pro Logic or Dolby Pro Logic II) or stereo sound effect.
- ② **TUNING** ◀▶▶▶
 - to select the tuner frequency.
- ③ **BASS**
 - to select bass adjustment mode.
- ④ **TREBLE**
 - to select treble adjustment mode.
- ⑤ **STANDBY ON** ⏻
 - to switch between power on and standby mode.
- ⑥ **DISPLAY SCREEN**
 - shows the status of the system.
- ⑦ **PROGRAM**
 - in Tuner mode, to program MW/FM stations.
- ⑧ **SOURCE**
 - to select the desired source or external input source (TV/AV, DISC DI, DISC 6CH, TUNER or AUX).
- ⑨ **VOLUME**
 - to adjust the master volume.
- ⑩ **PHONE**
 - to connect headphones.



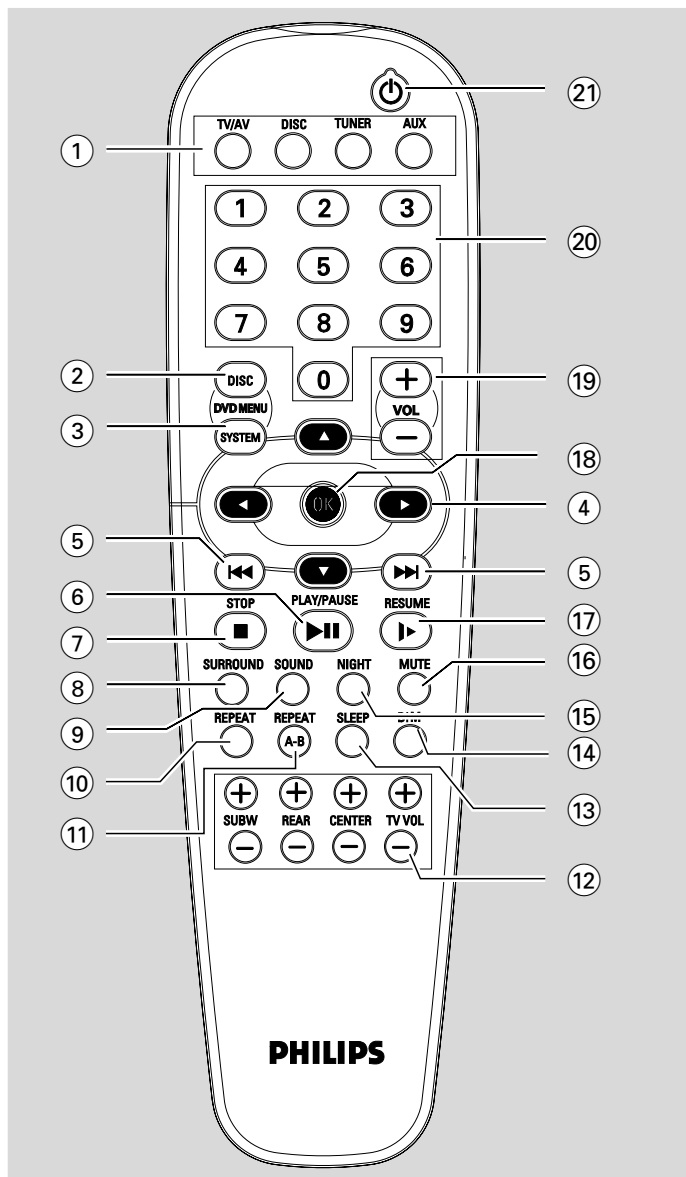
- ① **DIGITAL OUT**
 - connect to the digital inputs of an external audio equipment.
 - is active only when receiving input from DIGITAL IN (Coaxial or Optical).
- ② **WOOFER LINE OUT**
 - connect to an active subwoofer (optional).
- ③ **SPEAKERS**
 - connect to the front, center, surround and subwoofer speakers.
- ④ **DVD/SACD IN**
 - connect from the 6 channel output of a DVD or SACD player.
- ⑤ **AC POWER CORD**
 - connect to a standard AC outlet.
- ⑥ **MW / FM**
 - connect to the MW loop antenna or FM antenna
- ⑦ **DIGITAL IN**
 - connect from audio equipment with digital (Coaxial or Optical) audio output.
- ⑧ **AUDIO IN (TV/AV, AUX)**
 - connect from the analog audio outputs of a TV or other equipment.
- ⑨ **AUDIO OUT**
 - connect to the analog audio inputs of an external recording device or amplifier.

Caution: Do not touch the inner pins of the jacks on the rear panel. Electrostatic discharge may cause permanent damage to the unit.

Functional Overview

English

Remote control



Notes:

– The keys in the following list operate exclusively for this Receiver only.

- ① **SOURCE**
 - to select the desired source (TV/AV, DISC, TUNER or AUX).
- ④ ◀ ▶
 - Press ◀ / ▶ to select a preset radio station.
- ⑤ |◀◀ / ▶▶|
 - in Tuner mode, to tune to a lower or higher radio frequency.
- ⑧ **SURROUND**
 - to select multichannel surround (Dolby Digital, DTS or Dolby ProLogic II) or stereo sound effect.
- ⑨ **SOUND**
 - to select the various soundfield effects: CONCERT,

DRAMA, ACTION, SCI-FI, CLASSIC, JAZZ, ROCK or DIGITAL.

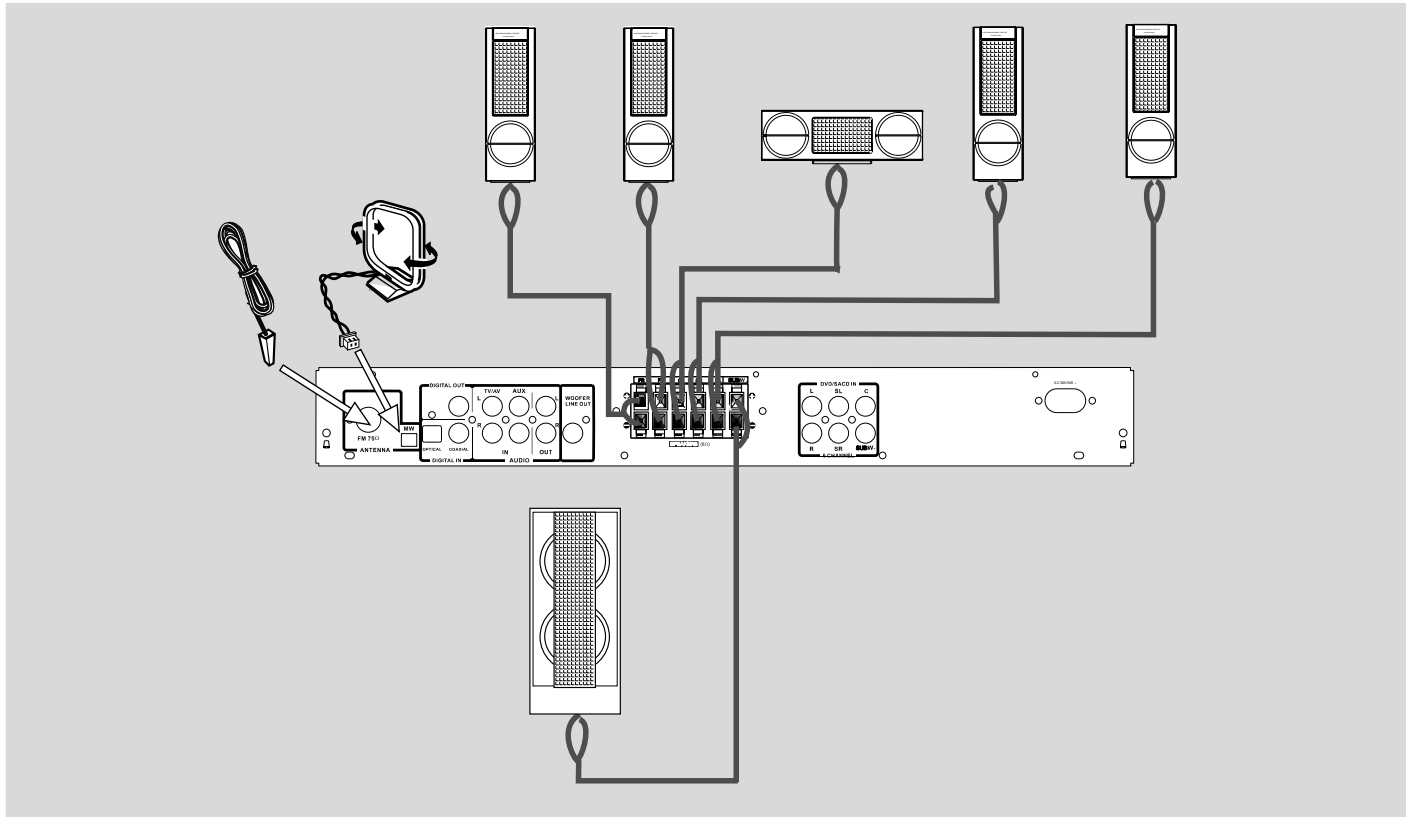
- ⑫ **SUBW + / –**
 - to adjust the subwoofer's level.
- REAR + / –**
 - to adjust the surround speakers' level.
- CENTER + / –**
 - to adjust the center speaker's level.
- TV + / –**
 - to adjust Philips's television volume level.
- ⑬ **SLEEP**
 - to set the sleep (auto-off) timer function.
- ⑭ **DIM**
 - to select different brightness for the display screen.
- ⑮ **NIGHT (Dolby Digital mode only)**
 - to optimise the dynamics of the sound output.
- ⑯ **MUTE**
 - to interrupt or resume sound reproduction.
- ⑰ **VOL + / –**
 - to adjust the volume level.
- ⑳ **Numeric Keypad (0-9)**
 - to enter the number of a preset radio station.
- ㉑ ⏻
 - to switch to standby mode.

Notes:

The following keys only operate for a Philips DVD player. For details, please refer to a Philips DVD player instruction manual.

- ② **DISC - DVD MENU**
 - to enter or exit the disc contents menu.
- ③ **SYSTEM - DVD MENU**
 - to enter or exit the system menu bar.
- ⑥ ▶ ||
 - to start or interrupt disc playback.
- ⑦ ■
 - to stop playing the disc.
- ⑩ **REPEAT**
 - to repeat chapter, track or disc.
- ⑪ **REPEAT A-B**
 - to repeat a specific section on a disc.
- ⑰ **RESUME**
 - to continue disc playback after an interruption.
- ⑱ **OK**
 - to exit or confirm the selection.

Connections

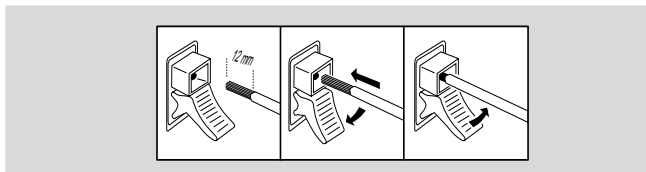


IMPORTANT!

- Before connecting the AC power cord to the wall outlet, ensure that all other connections have been made.
- Never make or change any connections with the power switched on.
- The type plate is located at the bottom of the system.

Connecting the speakers

Press up (or down) the speaker's jack and fully insert the stripped portion of the speaker cable into the jack, then release.

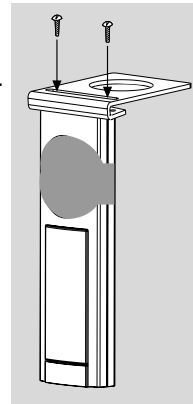


Speakers	⊖	⊕
Front Left (L)	black	white
Front Right (R)	black	red
Center	black	green
Surround (Rear) Left (L)	black	blue
Surround (Rear) Right (R)	black	grey
Passive Subwoofer	black	purple

Before connecting the speakers:

- Mount the speakers onto the mini speaker stands as shown in the illustration.
- Remove the protective cover only after the connection and installation of speakers are completed.

Connect the supplied speaker system using the supplied speaker cable by matching the colors of the jacks and speaker cable.



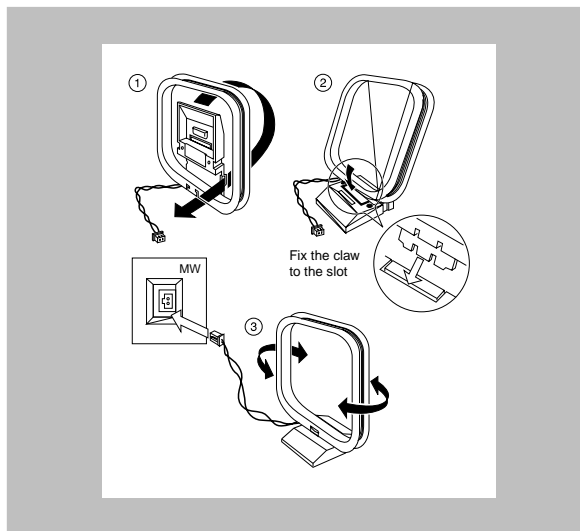
Notes:

- Check the speaker cables are correctly connected. Improper connections may damage the system due to short-circuit.
- For optimal sound performance, use the supplied speakers.
- Do not connect more than one speaker to any one pair of +/- speaker jacks.
- Do not connect speakers with impedance lower than the speakers supplied. Please refer to the SPECIFICATION section of this manual.

Connecting antennas

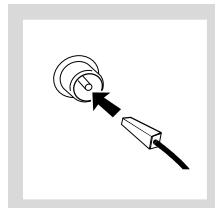
MW Indoor Loop Antenna

Connect the supplied MW loop antenna to the **MW** jack. Position the loop antenna to receive the clearest sound.



FM Indoor Antenna

Connect the supplied FM antenna to the **FM** jack. Move the antenna in various directions until the clearest signal is received.

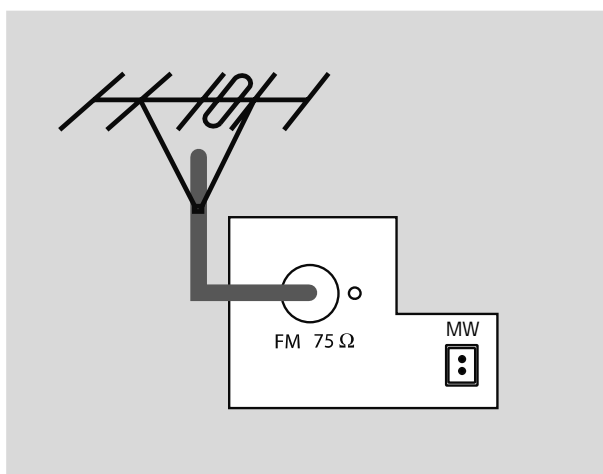


Note:

– Keep the antenna as far away as possible from the TV, VCR or any radiation source to prevent unwanted noise.

FM Outdoor Antenna

For better FM reception, use a 75 ohm coaxial cable (not supplied) to connect the system to an outdoor FM antenna as shown.



Connecting from a DVD and additional components

To listen to playback from your **DVD** or **SACD** player.

Option 1

6 CHANNEL-DVD/SACD IN

Use the supplied audio cables to connect the **6 CHANNEL-DVD/SACD IN** jacks to the corresponding Multichannel **AUDIO OUT** on your DVD or SACD player.

About 6 CHANNEL-DVD/SACD IN

The **6 CHANNEL-DVD/SACD IN** can be used to connect from a device with a built-in multichannel decoder (e.g. Dolby, Digital, DTS, etc) and 6-channel output, i.e. a high end DVD/SACD player

When using the **6 CHANNEL-DVD/SACD IN** audio input, the Receiver works as a multichannel amplifier. The source reproduces surround sound and sends it to the Receiver divided into the necessary channels. Therefore the **SURROUND** button has no effect since the provided signal is already multichannel.

From a source which is connected to the **6 CHANNEL-DVD/SACD IN**, audio input cannot be recorded.

OR

Option 2

DIGITAL IN

Connect the **OPTICAL** or **COAXIAL** jack to the **DIGITAL OUT** jack on the DVD or SACD player. You will need to set the Receiver's digital input to the jack you connected to (refer to "System Setup - Digital Input")

Connecting additional components

For listening to the playback from other audio/ visual devices through the Receiver

- Connect the **AUDIO IN (TV/AV or AUX)** jacks to the **AUDIO OUT** jacks on the **TV, VCR** or other audio/visual device.

AND/OR

- Connect the **DIGITAL IN (OPTICAL or COAXIAL)** jack to the **DIGITAL OUT** jack on other audio/visual device. You will need to set the Receiver's digital input to the jack you connected to (refer to "System Setup - Digital Input").

For recording to an external recording device

- Connect the **AUDIO OUT** jacks to the **AUDIO IN** jacks on an analog recording device.

AND/OR

- Connect the **DIGITAL OUT** jack to the **DIGITAL IN** jack on a digital recording device. You can only make a digital recording from digital signal received from the **DIGITAL IN** jack on this receiver.

Connections

Notes:

- If the audio format of the digital input does not match the capabilities of your Receiver, it will produce a strong distorted sound or no sound at all
- Always refer to the instruction manual of the connected equipment to make an optimal connection

Recording from the digital output

It is possible to connect a digital recorder to the digital output of the receiver. In this way, all signals coming from the digital inputs can be recorded directly on the connected audio recorder.

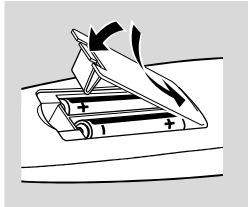
The receiver can be used to record digital sound audio signal from DVD to CD-R.

Notes:

- Dolby Digital, DTS or MPEG signal are not possible to record from this receiver.
- Digital recording is not possible when the digital source material is copy-protected.
- Even when other source (TV/AV, DISC 6CH, TUNER or AUX) is selected, all signals coming from the digital input (Coaxial or Optical) will be continuously recorded on the connected audio recorder.

Inserting batteries into the remote control

- 1 Open the battery compartment.
- 2 Place the batteries in the compartment with the correct polarity as indicated by '+' and '-' symbols.
- 3 Close the cover.



CAUTION!

- Remove batteries if they are exhausted or will not be used for a long time.
- Do not use old and new or different types of batteries in combination.
- Batteries contain chemical substances, so they should be disposed off properly.

Setting up the surround sound system

You must connect all the speakers and set up the system properly in order to enjoy the Digital Cinema experience at home (refer to "Connections - Connecting the speakers"). You will have the feeling of being in the middle of the action because sound is coming from everywhere around you. The subwoofer can enhance the bass performance of your system dramatically.

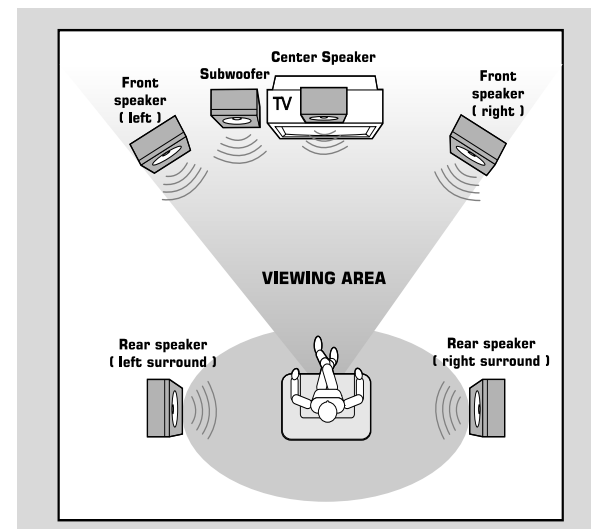
IMPORTANT!

Please sit at your usual listening position in order to set up the speaker balance correctly.

Preparations

Placing the speakers

To obtain the best surround effect, place the speaker as follows.



- 1 Place the front left and right speakers at equal distances from the TV and at an angle of approximately 45 degrees from the listening position.
- 2 Place the center speaker above or below the TV, so the center channel's sound is localized.
- 3 Place the surround speakers at normal listening ear level facing each other or mounted on the wall.
- 4 Place the subwoofer on the floor near to the TV.

Notes:

- To avoid magnetic interference, do not position the front speakers too close to your TV.
- If the rear surround speakers are installed farther away from the listening position than the front and center speakers, it will weaken the surround effect.
- All speakers should be securely installed to prevent accidents and improve sound quality.

Switching on the system

- 1 After completing all the connections, connect the AC power cord of the Receiver to the wall outlet. The system will go into STANDBY mode.
- 2 Press **STANDBY ON** to switch on the last selected source.
- 3 Rotate the **SOURCE** button or press **TV/AV**, **DISC**, **TUNER** or **AUX** on the remote control to select the input source.
 - The selected source will be displayed.

Basic Functions

Selecting the surround mode

IMPORTANT!

- **For proper surround sound, make sure you have followed the “Connections” and “Preparations” procedures fully.**
 - **The center and surround speakers only operate when the system is set to surround sound mode and the source material being played is recorded or broadcast in Dolby Digital, DTS, Dolby Pro Logic or Pro Logic II surround sound.**
 - **Stereo broadcasts or recordings will produce some surround channel effects when played in a surround mode. However, monaural sources will not produce any sound from the surround speaker.**
- Press **SURROUND** to select surround or stereo mode.
 - The availability of the various surround sound modes depend on the number of speakers used and the incoming sound information available on the disc. The available output modes are shown below.

Notes

Surround sound is not available in DISC 6CH mode.

Dolby Digital Surround

Dolby Digital (also known as AC-3 or Dolby 5.1) and MPEG Multichannel delivers a realistic and dynamic sound similar to theater and cinema. It requires connection of all five speakers (front left/right, center, surround left/right) and subwoofer for correct Dolby Digital Surround sound reproduction. Each channel plays its own unique role in providing the right sound. Front left, center and front right join two surround speakers to reproduce high, mid and bass frequencies in five full-range channels of surround. Bass rumble, explosions and low frequency effects you feel are delivered through the subwoofer. (A large number of DVD discs have recorded in Dolby Digital Surround.)

DTS Surround

The DTS Surround is a cinema surround sound format that offers superior digital audio performance. DTS offers more clarity and definition especially for higher tones. The better sound quality is a result of the limited sound compression (3:1 instead of 11:1 for Dolby Digital) and the 20-bit resolution.

Dolby Pro Logic Surround

The Dolby Pro Logic Surround system is a specially encoded two channels analog format that will produce sound through four speaker channels (front left, center, front right, monaural surround) when a Dolby Pro Logic Decoder is used. It is also compatible with stereo systems but the user will only have two channels (Front left & Right) of sound.

Dolby Pro Logic II Surround

Dolby Pro Logic II Surround creates five full bandwidth output channels from two-channel sources. This is done using an advanced, high purity matrix surround decoder that extracts the spatial properties of the original recording without adding any new sounds or tonal colorations.

Movie mode

The movie mode is for use with stereo television shows and all programs encoded in Dolby Surround. The result is enhanced soundfield directionality that approaches the quality of discrete 5.1-channel sound.

Music mode

The Music mode is for use with any stereo music recordings, and provides a wide and deep sound space.

VSS (Virtual Surround Sound)

The Pro Logic MPEG or Dolby Digital surround channel is processed by a 'virtualizer' DSP to add surround effect from just the two front speakers.

Stereo

All sound is reproduced and played through the front left and right speakers. This enables standard stereo reproduction.

Selecting the digital sound effect

The digital sound effects allows you to select from various preset modes that control the frequency bands of sound to optimize certain musical styles. It greatly enhances the excitement and enjoyment of your favorite music.

- Press **SOUND** repeatedly to select the available sound effect.

In Dolby Digital, DTS, Dolby Pro Logic, Pro Logic II (movie) mode, select :

– CONCERT, DRAMA, ACTION or SCI-FI

In Stereo, VSS, Pro Logic II (music) mode, select :

– JAZZ, ROCK, DIGITAL or CLASSIC

Dimming the display screen

- Press **DIM** repeatedly to select different levels of brightness for the display screen : HIGH, MID or LOW.

Basic Functions

Volume Control

Changing the volume level

- Adjust **VOLUME** button (or press **VOL +/-**) to increase or decrease the volume level.
 - "VOL XX" is displayed.
 - "VOL MAX" is displayed if volume is at maximum level.
 - Press **SUBW +/-** to adjust the level of the subwoofer speaker volume.
 - "SUBW XXdB" is displayed.
 - The range is from -15dB to 10dB.
 - Press **REAR +/-** to adjust the level of the surround speakers volume.
 - "REAR XXdB" is displayed.
 - The range is from -15dB to 10dB.
 - Press **CENTER +/-** to adjust the level of the center speakers volume.
 - "CNT XXdB" is displayed.
 - The range is from -15dB to 10dB.
- For PHILIPSTVs only:**
- Press **TVVOL +/-** on the remote control to adjust the TV's volume level.

Notes

- "XX" denotes the volume level.
- When **SURROUND** mode is set to **Stereo** or **VSS** mode, **REAR +/-** and **CENTER +/-** keys are void.
- In **test tone** mode, volume control is void.

To switch off the volume temporarily

- Press **MUTE**.
 - "MUTE ON" is displayed.
- To restore the volume, press **MUTE** again or increase the volume level.

Note

When **MUTE** is activated **ON**, all sound on the rear jacks (**AUDIO OUT**, **DIGITAL OUT**) will remain on.

To listen through the headphones

Connecting headphones to **PHONES** will switch off the speakers. The receiver switches to **STEREO** and surround sound will be reduced to a stereo signal which is reproducible by standard headphones.

Disconnecting the headphones switches on the speakers again. If you wish to enjoy surround sound again, switch the receiver back to surround sound.

Adjusting the Tone

- Press **BASS** or **TREBLE** on the receiver to select Bass or Treble sound feature.
- Adjust the **VOLUME** on the receiver to select the desired Bass or Treble level.
 - "BAS XXdB" or "TRE XXdB" is displayed "XX" denotes the level.
 - The range is from -10dB to 10dB.

Notes

- The volume knob can be used to adjust Bass/Treble level immediately after you have selected the respective Bass/Treble sound feature. If the volume knob is not used within 5 seconds, it will become normal volume control function.
- When headphones are connected, the **BASS** and **TREBLE** controls will be disabled.

System Setup

The system setup enables you to customize the Receiver. You can adjust the following features:

Center Delay

- If the listening position is closer to the center speaker than the front speakers, you can set the center delay time to improve the center sound effect.
- Options : 5ms, 3ms, 2ms, 1ms, OFF.

Rear Delay

- If the listening position is closer to the rear surround speakers than the front speakers, you can set the rear delay time to improve the rear sound effect.
- Options : 15ms, 12ms, 9ms, 6ms, 3ms OFF.

Test Tone

- If set to ON, the system will test the speaker settings.
- The test signal is generated through the left, center, right, and surround speakers. The default setting is OFF.

Digital Input

- Digital input selection enables you to specify the digital source to be recorded at the Digital output of the Receiver.
- Options: COAXIAL or OPTICAL

Menu OFF

Select this function to turn off the System Setup and go back to normal function.

To enter System Setup,

- 1** Press **PROGRAM** on the Receiver for 5 seconds to enter the navigation menu.
- 2** Press **◀◀ / ▶▶** on the Receiver to toggle through the functions (*TEST TONE, CENTER DELAY, REAR DELAY, DIGITAL INPUT*) and select your preferred option.
- 3** Press **PROGRAM** again to confirm the selection.
- 4** Adjust the **VOLUME** on the Receiver to select your preferred option.
- 5** Press **PROGRAM** to confirm the selection.

Notes

If no button is pressed within 5 seconds during System Setup, it will return to normal function.

Others Functions

Tuning to radio stations

- In **TUNER** mode, press **◀◀** or **▶▶** briefly and repeatedly until the right frequency or optimum reception is obtained.
- Press **◀◀** or **▶▶** more than 1 second if you want to activate automatic search tuning. Tuning automatically stops when a station of sufficient strength has been found.
- Press **TUNER** again to select the desired band : FM or MW.

Presetting radio stations

You can preset up to 40 stations .

- 1** Tune to your desired radio station by pressing the **◀◀** or **▶▶** button on the front panel or on the remote control. and press **PROGRAM** to enter the program mode.
→ "Pxx : xx.xx" is displayed.
- 2** Use the **numeric keypad (0-9)** or **◀ / ▶** to select the desired preset number (01~40).
- 3** Press **PROGRAM** to store the station.

Sleep timer setting

The sleep timer enables the system to switch to standby mode automatically at a preset time.

- 1** On the remote control, press **SLEEP** repeatedly to select a preset time.
→ The selections are as follows (time in minutes):
15 → 30 → 45 → 60 → 90 → 120 → OFF → 15...
- 2** When you reach the desired length of time, stop pressing the **SLEEP** button.
→ "SLEEP" appears.

To check the remaining length of time after sleep timer is activated:

- Press **SLEEP**.

To change the preset sleep timer

- Press **SLEEP** again while the remaining sleep timer is shown.
→ The display will show the next sleep timer options.

To deactivate the sleep timer

- Press **SLEEP** repeatedly until "OFF" is displayed, or press **STANDBY ON**.

Night Mode Function

When very dynamic movie soundtracks are played at low volume, such as late at night, you can use **Night Mode** to apply appropriate compression so that low-level program content is not lost and high volume effects are restrained.

- On the remote control, press **NIGHT**. "**NIGHT ON**" appears briefly when activated.
- Press **NIGHT** again to deactivate. "**NIGHT OFF**" appears briefly.

Notes:

- *This function only works when Dolby Digital is selected.*

Troubleshooting

English

WARNING!

Under no circumstances should you try to repair the system yourself, as this will invalidate the warranty. Do not open the system as there is a risk of electric shock.

If a fault occurs, first check the points listed below before taking the system for repair. If you are unable to solve a problem by following these hints, consult your dealer or service center.

Problem	Solution
No power.	<ul style="list-style-type: none">– Check the connection to the AC power cord.
No sound or distorted sound from speakers	<ul style="list-style-type: none">– Check the connection to the speakers.– Adjust the volume.– Select the source you wish to listen to.– If the muting is on, press the MUTE button.– Replace the speaker cables.
No sound is heard from center or rear speakers	<ul style="list-style-type: none">– Check the connections to the speakers.– Use the CENTER +/- or REAR +/- to adjust the volume level.– Check the speaker are connected correctly.
No sound from subwoofer.	<ul style="list-style-type: none">– Check the connections to the subwoofer.– Play the bass source.
Noise interference	<ul style="list-style-type: none">– The unit is too close to a TV set or other electrical appliances, relocate the unit, or turn off other appliances.
Sound cuts off during listening to music	<ul style="list-style-type: none">– The positive and negative speaker cords may have short-circuited. Turn off the power and check the speaker cords.– Turn off the power and turn it on again, then reduce the volume.
Sound from the left and right speaker is reversed	<ul style="list-style-type: none">– Check that the left and right speakers are not positioned in reverse order.– Check the left and right speakers cables are not connected to the terminals in reverse order.
Considerable noise in radio broadcasts.	<ul style="list-style-type: none">– Tune to the correct frequency.– Connect the antenna.– Route all connection cables away from the antenna terminals and wires.– Fully extend the FM wire antenna. Position for best reception and secure to a wall.– Connect an outdoor FM or MW antenna.– Adjust the direction and position for best reception.– Turn off the equipment causing the noise.– Place the antenna farther away from the equipment causing the noise.
The remote control does not function.	<ul style="list-style-type: none">– Point the remote control at the remote sensor of the unit.– Reduce the distance to the Receiver.– Remove any possible obstacles.– Replace the batteries with new ones.– Check that the batteries are loaded correctly.– Insert the mains plug into an outlet and press the main unit STANDBY ON \odot button.
Can't set NIGHT mode	<ul style="list-style-type: none">– Play a source with DOLBY DIGITAL 5.1 channel sound.– Select a source (OPTICAL or COAXIAL) connected by digital cable correctly.
The display is dark	<ul style="list-style-type: none">– Press DIM again.
Low bass response	<ul style="list-style-type: none">– Check all speakers for correct polarity.
Can't select DTS mode	<ul style="list-style-type: none">– Check the source's sound output setting and turn on DTS output.– Play a source with DTS sound.– Select a OPTICAL or COAXIAL source connected by digital cable.

Specifications

AMPLIFIER SECTION

Output power

Stereo mode (DIN)	2 x 50 W
Surround mode (1 kHz)	50W RMS / channel
Total Harmonic Distortion	10% at rated power (1 kHz)
Frequency Response	180Hz ~ 14 kHz / ±1 dB
Signal-to-Noise Ratio	>65 dB (CCIR)

Input Sensitivity

TV/AV	400mV
AUX	400mV
6 CHANNEL-DVD/SACD	800 mV
Digital coaxial	IEC 60958
Digital optical	Toslink

TUNER SECTION

Tuning Range	FM 87.5 – 108 MHz (50 kHz steps)
.....	MW 531 – 1602 kHz (9 kHz steps)
26 dB Quieting Sensitivity	FM 20 dB
26 dB Quieting Sensitivity	MW 3260 µV/m
Image Rejection Ratio	FM 25 dB
.....	MW 28 dB
IF Rejection Ratio	FM 60 dB
.....	MW 24 dB
Signal-to-Noise Ratio	FM 55 dB
.....	MW 35 dB
MW Suppression Ratio	FM 30 dB
Harmonic Distortion	FM Mono 3%
.....	FM Stereo 3%
.....	MW 5%
Frequency Response	FM 180 Hz – 10 kHz / ±6 dB
Stereo Separation	FM 26 dB (1 kHz)
Stereo Threshold	FM 23.5 dB

MISCELLANEOUS

Power Supply Rating	
UK/Europe	220~240 V / 50 Hz
Power Consumption	160W
Dimensions (w x h x d)	435 mm x 58 mm x 365 mm
EcoPower Standby	1W
Weight	4.2 kg

IR REMOTE CONTROL

Effective Range	> 8 Meter
Number of Keys	45
Battery (1.5V)	AA x 2

SPEAKERS

Front Speakers / Rear (surround) speakers

System	2-way shielded
System	2-way unshielded
Impedance	8 Ω
Speaker drivers	3" woofer, 2"x3" ribbon tweeter
Dimensions (w x h x d)	89mm x 270mm x 41mm
Weight	0.4 kg/each

Center Speaker

System	2-way shielded
Impedance	8 Ω
Speaker drivers	2x3" woofer, 2x3 ribbon tweeter
Dimensions (w x h x d)	286 mm x 95 mm x 67 mm
Weight	0.88 kg

Subwoofer

Subwoofer (not magnetically shielded design)	6.5"
Impedance	8 Ω
Dimensions (w x h x d)	195 mm x 462 mm x 263 mm
Weight	5.5 kg

Specifications subject to change without prior notice.

Free Manuals Download Website

<http://myh66.com>

<http://usermanuals.us>

<http://www.somanuals.com>

<http://www.4manuals.cc>

<http://www.manual-lib.com>

<http://www.404manual.com>

<http://www.luxmanual.com>

<http://aubethermostatmanual.com>

Golf course search by state

<http://golfingnear.com>

Email search by domain

<http://emailbydomain.com>

Auto manuals search

<http://auto.somanuals.com>

TV manuals search

<http://tv.somanuals.com>