

Important

Read these instructions for use carefully before using the appliance and save them for future reference.

- ▶ Check if the voltage indicated on the type plate corresponds to the local mains voltage before you connect the appliance.
- ▶ Only connect the appliance to an earthed wall socket.
- ▶ Do not use the appliance if the plug, the cord or the appliance itself shows visible damage, or if the appliance has been dropped or is leaking.
- ▶ Check the cord regularly for possible damage.
- ▶ If the mains cord is damaged, it must be replaced by Philips, a service centre authorised by Philips or similarly qualified persons in order to avoid a hazard.
- ▶ Never leave the appliance unattended when it is connected to the mains.
- ▶ Never immerse the iron and the stand, if provided, in water.
- ▶ Keep the appliance out of the reach of children.
- ▶ The soleplate of the iron can become extremely hot and may cause burns if touched.
- ▶ Do not allow the cord to come into contact with the soleplate when it is hot.
- ▶ When you have finished ironing, when you clean the appliance, when you fill or empty the water tank and also when you leave the iron even for a short while: set the steam control to position 0, put the iron on its heel and remove the mains plug from the wall socket.
- ▶ Always place and use the iron and the stand, if provided, on a stable, level and horizontal surface.
- ▶ Do not put perfume, vinegar, starch, descaling agents, ironing aids or other chemicals in the water tank.
- ▶ This appliance is intended for household use only.

Electromagnetic fields (EMF)

This Philips appliance complies with all standards regarding electromagnetic fields (EMF). If handled properly and according to the instructions in this user manual, the appliance is safe to use based on scientific evidence available today.



Storage

- 1 Unplug the iron and set the steam control to position 0.
- 2 Empty the water tank (Fig. 13).
- 3 Let the iron cool down. Wind the mains cord round the cord storage facility and fix it with the cord clip. (Fig. 14)
- 4 Always store the iron on its heel in a safe and dry place.

Environment

- ▶ Do not throw the appliance away with the normal household waste at the end of its life, but hand it in at an official collection point for recycling. By doing this you will help to preserve the environment (Fig. 15).

Guarantee & service

If you need information or if you have a problem, please visit the Philips website at www.philips.com or contact the Philips Customer Care Centre in your country (you will find its phone number in the worldwide guarantee leaflet). If there is no Customer Care Centre in your country, turn to your local Philips dealer or contact the Service Department of Philips Domestic Appliances and Personal Care BV.

Troubleshooting

This chapter summarises the most common problems you could encounter with your iron. If you are unable to solve the problem, contact the Customer Care Centre in your country.

Problem	Cause	Solution
The iron is plugged in but the soleplate is cold.	There is a connection problem.	Check the mains cord, the plug and the wall socket.
	The temperature dial has been set to MIN.	Set the temperature dial to the required position.
No steam.	There is not enough water in the water tank.	Fill the water tank (see chapter 'Preparing for use').
	The steam control has been set to position 0.	Set the steam control to a position between 1 and 6 (see chapter 'Using the appliance').



www.philips.com

100% recycled paper
100% papier recyclé

4239.000.6667.1

Problem	Cause	Solution
	The iron is not hot enough and/or the drip-stop function has been activated.	Select an ironing temperature that is suitable for steam ironing (●● to MAX). Put the iron on its heel and wait until the amber temperature light has gone out before you start ironing.
No shot of steam or no vertical shot of steam.	The shot-of-steam function has been used too often within a very short period.	Continue ironing in horizontal position and wait a while before using the shot-of-steam function again.
	The iron is not hot enough.	Select an ironing temperature that is suitable for steam ironing (●● to MAX). Put the iron on its heel and wait until the amber temperature light has gone out before you start ironing.
Water droplets drip onto the fabric.	The cap of the filling opening has not been closed properly.	Press the cap until you hear a click.
	An additive has been poured into the water tank.	Rinse the water tank and do not put any additive in the water tank.
Flakes and impurities come out of the soleplate during ironing.	Hard water forms flakes inside the soleplate.	Use the calc-clean function a few times (see chapter 'Cleaning and maintenance').

Preparing for use

Filling the water tank

Never immerse the iron in water.

- 1 Make sure the appliance is unplugged.
- 2 Set the steam control to position 0 (= no steam) (Fig. 1).
- 3 Open the cap of the filling opening.
- 4 Tilt the iron backwards.
- 5 Fill the water tank with tap water up to the maximum level by means of the filling cup. (Fig. 2)

Do not fill the tank beyond the MAX indication.

Do not put perfume, vinegar, starch, descaling agents, ironing aids or other chemicals in the water tank.

- ▶ If the tap water in your area is very hard, we advise you to mix it with an equal portion of distilled water, or to use distilled water only.

- 6 Close the cap of the filling opening ('click') (Fig. 3).

Setting the temperature

- 1 Put the iron on its heel.
- 2 Set the required ironing temperature by turning the temperature dial to the appropriate position (Fig. 4).

Check the laundry care label for the required ironing temperature:

- ● Synthetic fabrics (e.g. acrylic, nylon, polyamide, polyester)
- ● Silk
- ●● Wool
- ●●● Cotton, linen

If you do not know what kind or kinds of fabric an article is made of, determine the right ironing temperature by ironing a part that will not be visible when you wear or use the article.

Silk, woollen and synthetic materials: iron the reverse side of the fabric to prevent shiny patches. Avoid using the spray function to prevent stains.

Start ironing the articles that require the lowest ironing temperature, such as those made of synthetic fibres.

- 3 Put the mains plug in an earthed wall socket.
- 4 When the amber temperature light has gone out, wait a while before you start ironing (Fig. 5).

The temperature light will go on from time to time during ironing.

Before first use

- 1 Remove any sticker or protective foil from the soleplate and clean the soleplate with a soft cloth.

Note: The iron may give off some smoke when you use it for the first time. This will cease after a short while.

Using the appliance

Steam ironing

- 1 Make sure that there is enough water in the water tank.
- 2 Select the recommended ironing temperature (see chapter 'Preparing for use', section 'Setting the temperature').
- 3 Select the appropriate steam setting. Make sure that the steam setting you select is suitable for the ironing temperature selected: (Fig. 6)
 - 1 - 3 for moderate steam (temperature settings ●● to ●●●)
 - 4 - 6 for strong steam (temperature settings ●●● to MAX)

Note: The iron will start steaming as soon as the set temperature has been reached.

Ironing without steam

- 1 Set the steam control to position 0 (= no steam) (Fig. 7).
- 2 Select the recommended ironing temperature (see chapter 'Preparing for use', section 'Setting the temperature').

Features

Spray function

You can use the spray function to remove stubborn creases at any temperature.

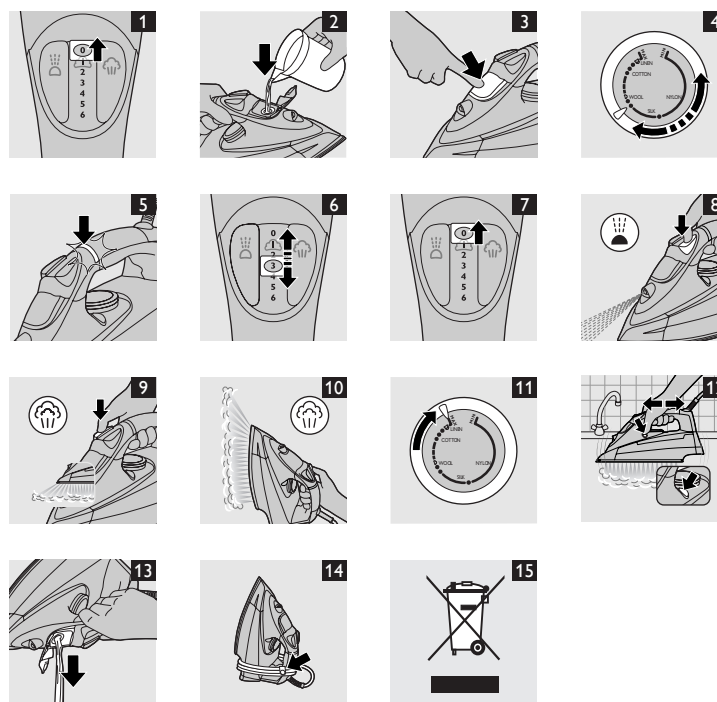
- 1 Make sure that there is enough water in the water tank.
- 2 Press the spray button several times to moisten the article to be ironed (Fig. 8).

Concentrated shot of steam from the special Steam Tip

A powerful shot of concentrated steam helps remove stubborn creases. The forward-directed concentrated shot of steam enhances the distribution of steam into every part of your garment.

The shot-of-steam function can only be used at temperature settings between ●● and MAX.

- 1 Press and release the shot-of-steam button (Fig. 9).



Vertical shot of steam

- 1 The shot-of-steam function can also be used when you hold the iron in vertical position. (Fig. 10)

This is useful for removing creases from hanging clothes, curtains etc.

Never direct the steam at people.

Cleaning and maintenance

After ironing

- 1 Remove the mains plug from the wall socket and let the iron cool down.
- 2 Wipe flakes and any other deposits off the soleplate with a damp cloth and a non-abrasive (liquid) cleaning agent.

To keep the soleplate smooth, you should avoid hard contact with metal objects. Never use a scouring pad, vinegar or other chemicals to clean the soleplate.

- 3 Clean the upper part of the iron with a damp cloth.
- 4 Regularly rinse the water tank with water. Empty the water tank after cleaning.

Calc-clean function

You can use the calc-clean function to remove scale and impurities.

- ▶ Use the calc-clean function once every two weeks. If the water in your area is very hard (i.e. when flakes come out of the soleplate during ironing), the calc-clean function should be used more frequently.

- 1 Make sure the appliance is unplugged.
- 2 Set the steam control to position 0.
- 3 Fill the water tank to the maximum level.

Do not put vinegar or other descaling agents in the water tank.

- 4 Select the maximum ironing temperature (Fig. 11).
- 5 Put the plug in an earthed wall socket.
- 6 Unplug the iron when the amber temperature light has gone out.
- 7 Hold the iron over the sink, press and hold the calc-clean button and gently shake the iron to and fro (Fig. 12).

Steam and boiling water will come out of the soleplate. Impurities and flakes (if any) will be flushed out.

- 8 Release the calc-clean button as soon as all the water in the tank has been used up.

Repeat the calc-clean process if the iron still contains a lot of impurities.

After the calc-clean process

- Put the plug in the wall socket and let the iron heat up to allow the soleplate to dry.
- Unplug the iron when it has reached the set ironing temperature.
- Move the hot iron gently over a piece of used cloth to remove any water stains that may have formed on the soleplate.
- Let the iron cool down before you store it.

Free Manuals Download Website

<http://myh66.com>

<http://usermanuals.us>

<http://www.somanuals.com>

<http://www.4manuals.cc>

<http://www.manual-lib.com>

<http://www.404manual.com>

<http://www.luxmanual.com>

<http://aubethermostatmanual.com>

Golf course search by state

<http://golfingnear.com>

Email search by domain

<http://emailbydomain.com>

Auto manuals search

<http://auto.somanuals.com>

TV manuals search

<http://tv.somanuals.com>