

Always there to help you

Register your product and get support at
www.philips.com/welcome

DTB297



User manual

PHILIPS

Contents

1	Important	2
	Safety	2
	Notice	3

2	Your Docking Entertainment System	5
	Introduction	5
	What's in the box	5
	Overview of the main unit	6

3	Get started	8
	Install batteries	8
	Connect power	8
	Set time and date	9
	Turn on	9

4	Play	10
	Play from iPod/iPhone/iPad	10
	Play from a Bluetooth device	11
	Play from Philips DigitalRadio application	11
	Play from an external device	11

5	Listen to radio	12
	Store DAB radio stations automatically	12
	Basic operations	12
	Use the menu	12

6	Other features	14
	Adjust volume level	14
	Set the alarm timer	14
	Set the sleep timer	14
	Adjust display brightness	14

7	Product information	15
	Specifications	15
	RDS program types	16

8	Troubleshooting	17
----------	------------------------	-----------

1 Important

Safety

Know these safety symbols



This 'bolt of lightning' indicates uninsulated material within your unit may cause an electrical shock. For the safety of everyone in your household, please do not remove product covering.

The 'exclamation point' calls attention to features for which you should read the enclosed literature closely to prevent operating and maintenance problems.

WARNING: To reduce the risk of fire or electric shock, this apparatus should not be exposed to rain or moisture and objects filled with liquids, such as vases, should not be placed on this apparatus.

CAUTION: To prevent electric shock, match wide blade of plug to wide slot, fully insert.

Important Safety Instructions

- ① Read these instructions.
- ② Keep these instructions.
- ③ Heed all warnings.
- ④ Follow all instructions.
- ⑤ Do not use this apparatus near water.
- ⑥ Clean only with dry cloth.
- ⑦ Do not block any ventilation openings. Install in accordance with the manufacturer's instructions.
- ⑧ Do not install near any heat sources such as radiators, heat registers, stoves, or other apparatus (including amplifiers) that produce heat.
- ⑨ Protect the power cord from being walked on or pinched, particularly at plugs, convenience receptacles, and the point where they exit from the apparatus.
- ⑩ Only use attachments/accessories specified by the manufacturer.
- ⑪ Use only with the cart, stand, tripod, bracket, or table specified by the manufacturer or sold with the apparatus. When a cart is used, use caution when moving the cart/apparatus combination to avoid injury from tip-over.
- ⑫ Unplug this apparatus during lightning storms or when unused for long periods of time.
- ⑬ Refer all servicing to qualified service personnel. Servicing is required when the apparatus has been damaged in any way, such as power-supply cord or plug is damaged, liquid has been spilled or objects have fallen into the apparatus, the apparatus has been exposed to rain or moisture, does not operate normally, or has been dropped.
- ⑭ Battery usage **CAUTION** – To prevent battery leakage which may result in bodily injury, property damage, or damage to the unit:



- Install all batteries correctly, + and - as marked on the unit.
- Do not mix batteries (old and new or carbon and alkaline, etc.).
- Remove batteries when the unit is not used for a long time.
- Batteries (battery pack or batteries installed) shall not be exposed to excessive heat such as sunshine, fire or the like.

- 15 **Apparatus shall not be exposed to dripping or splashing.**
- 16 **Do not place any sources of danger on the apparatus (e.g. liquid filled objects, lighted candles).**
- 17 **Where the plug of the Direct Plug-in adapter is used as the disconnect device, the disconnect device shall remain readily operable.**

Warning

- Never remove the casing of this apparatus.
- Never lubricate any part of this apparatus.
- Never place this apparatus on other electrical equipment.
- Keep this apparatus away from direct sunlight, naked flames or heat.
- Ensure that you always have easy access to the power cord, plug or adaptor to disconnect the apparatus from the power.

Notice

CE 0560

This product complies with the radio interference requirements of the European Community.

Any changes or modifications made to this device that are not expressly approved by

WOOX Innovations may void the user's authority to operate the equipment. Specifications are subject to change without notice. WOOX reserves the right to change products at any time without being obliged to adjust earlier supplies accordingly.



Your product is designed and manufactured with high quality materials and components, which can be recycled and reused.



When this crossed-out wheeled bin symbol is attached to a product it means that the product is covered by the European Directive 2002/96/EC.

Please inform yourself about the local separate collection system for electrical and electronic products.

Please act according to your local rules and do not dispose of your old products with your normal household waste. Correct disposal of your old product helps to prevent potential negative consequences for the environment and human health.



Your product contains batteries covered by the European Directive 2006/66/EC, which cannot be disposed with normal household waste. Please inform yourself about the local rules on separate collection of batteries because correct disposal helps to prevent negative consequences for the environmental and human health.

Environmental information

All unnecessary packaging has been omitted. We have tried to make the packaging easy to separate into three materials: cardboard (box), polystyrene foam (buffer) and polyethylene (bags, protective foam sheet.)

Your system consists of materials which can be recycled and reused if disassembled by a specialized company. Please observe the local regulations regarding the disposal of packaging materials, exhausted batteries and old equipment.



The Bluetooth® word mark and logos are registered trademarks owned by Bluetooth SIG, Inc. and any use of such marks by WOOX Innovations is under license.



“Made for iPod,” “Made for iPhone,” and “Made for iPad” mean that an electronic accessory has been designed to connect specifically to iPod, iPhone, or iPad, respectively, and has been certified by the developer to meet Apple performance standards. Apple is not responsible for the operation of this device or its compliance with safety and regulatory standards. Please note that the use of this accessory with iPod, iPhone, or iPad may affect wireless performance.

iPod and iPhone are trademarks of Apple Inc., registered in the U.S. and other countries. iPad is a trademark of Apple Inc.

Class II equipment symbol:



CLASS II apparatus with double insulation, and no protective earth provided.

Note

- The type plate is located on the bottom of the apparatus.

2 Your Docking Entertainment System

Congratulations on your purchase, and welcome to Philips! To fully benefit from the support that Philips offers, register your product at www.philips.com/welcome.

Introduction

With this unit, you can:

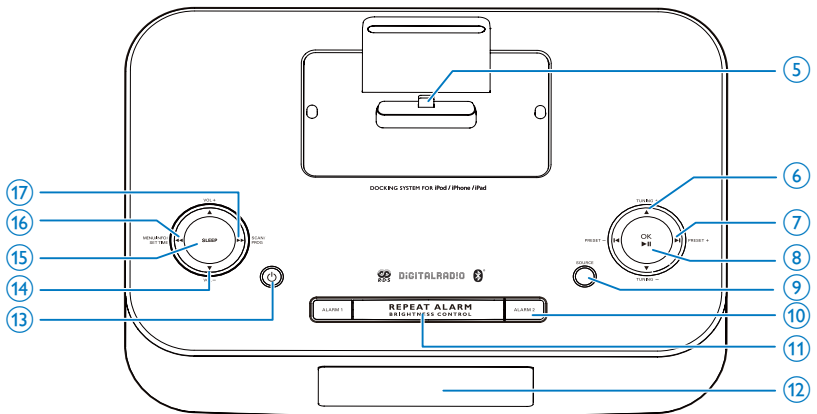
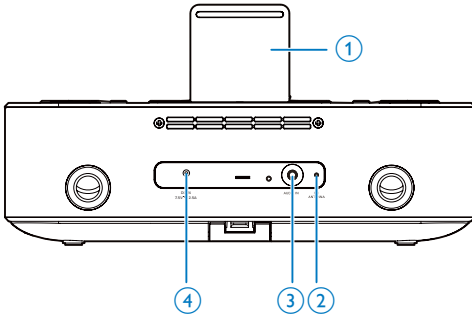
- listen to FM/DAB radio.
- enjoy audio from iPod/iPhone/iPad, a Bluetooth-enabled device.
- enjoy audio from an external device through 3.5mm audio connection.
- set two alarms.
- wake up by buzzer alarm, DAB/FM radio, or iPod/iPhone/ipad.

What's in the box

Check and identify the contents of your package:

- Main unit
- AC power adapter (with three types of detachable plugs)
- Printed materials

Overview of the main unit



① Dock for iPod/iPhone/iPad

② FM antenna

- Improve FM reception.

③ AUDIO IN

- 3.5mm audio input socket.

④ DC IN (7.5V 2.5A)

- Power supply socket.

⑤ Lightning dock connector

⑥ TUNING +/- ▲ / ▼

- Tune to a radio station.
- Adjust time.
- Switch between the DAB and FM menus.

⑦ PRESET +/- ◀ / ▶

- Skip to the previous/next audio file.
- (Press and hold) fast backward/forward within an audio file.
- Select a preset radio station.

⑧ OK / ▶ ||

- In DOCK and BT mode, start or pause play.
- Confirm selection.
- Select FM stereo or FM mono.

⑨ SOURCE

- Select an audio source: BT, DAB, FM, AUDIO IN, DOCK.

- ⑩ **ALARM 1/ALARM 2**
- Set the alarm timer.
 - Turn off the alarm tone.
 - View alarm settings.
- ⑪ **REPEAT ALARM/BRIGHTNESS CONTROL**
- Repeat the alarm.
 - Adjust the display brightness.
- ⑫ **Display panel**
- Show the current status.
- ⑬ **⏻**
- Turn on the unit or switch to standby mode.
 - Deactivate the sleep timer.
 - Stop alarm.
- ⑭ **VOL +/- ▲ / ▼**
- Adjust volume.
- ⑮ **SLEEP**
- Set the sleep timer.
- ⑯ **MENU/INFO/SET TIME/ ⏪**
- (Press and hold) in dock mode, fast backward within an audio file.
 - (Press and hold) access the FM/DAB menu.
 - Select display information during play.
 - In Standby mode, set the clock and date.
- ⑰ **SCAN/PROG/ ⏩**
- (Press and hold) in dock mode, fast backward within an audio file.
 - (Press and hold) disconnect all the existing Bluetooth connections.
 - Search for available FM or DAB radio stations.
 - Program radio stations.

3 Get started

! Caution

- Use of controls or adjustments or performance of procedures other than herein may result in hazardous radiation exposure or other unsafe operation.

Always follow the instructions in this chapter in sequence.

If you contact Philips, you will be asked for the model and serial number of this apparatus. The model number and serial number are on the bottom of the apparatus. Write the numbers here:

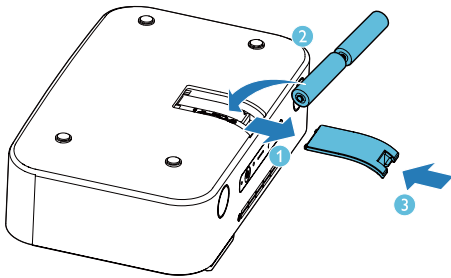
Model No. _____

Serial No. _____

Install batteries

≡ Note

- You can only use AC power as power supply. Batteries (not supplied) are for backup purpose.



- 1 Open the battery compartment.
- 2 Insert 2 x R6/UM-3/AA size batteries with correct polarity (+/-) as indicated.
- 3 Close the battery compartment.

! Caution

- Remove battery if it is exhausted or will not be used for a long time.
- Batteries contain chemical substances, so they should be disposed of properly.
- Risk of explosion! Keep batteries away from heat, sunshine or fire. Never discard batteries in fire.

Connect power

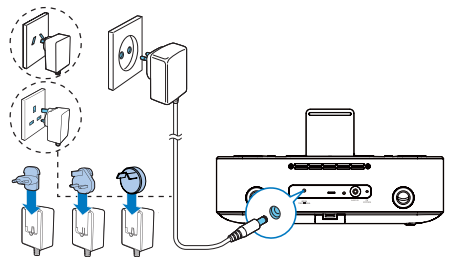
! Caution

- Risk of product damage! Ensure that the power voltage corresponds to the voltage printed on the back or underside of the unit.
- Risk of electric shock! When you unplug the AC power cord, always pull the plug from the socket. Never pull the cord.
- Before connection of the AC power cord, make sure that you have completed all other connections.

≡ Note

- The type plate is located at the bottom of the unit.

- Connect the AC power adapter to:
 - the **AC ~** socket on the back of the unit.
 - the wall outlet.



Set time and date

- 1 In standby mode, press and hold **MENU/INFO/SET TIME/ ◀◀** for 2 seconds.
 - ↳ The unit beeps once.
 - ↳ [24H] starts to blink.
- 2 Press **TUNING +/- ▲ / ▼** to select the 12/24 hour format, then press **OK/ ▶▶** to confirm.
 - ↳ The hour digits start to blink.
- 3 Repeat steps 2 to set the hour, minute, day, month, and year.
 - ↳ After confirmation of the year setting, the unit beeps once again.



Tip

- In 12 hour format, [MONTH--DAY] is displayed.
- in 24 hour format, [DAY--MONTH] is displayed.

Turn on

- Press **⏻**.
 - ↳ The unit switches to the last selected source.

Switch to standby

- Press **⏻** again to switch the unit to standby mode.
 - ↳ The time and date (if set) appear on the display panel.

4 Play

Play from iPod/iPhone/iPad

You can enjoy audio from iPod/iPhone/iPad through this unit.

Compatible iPod/iPhone/iPad

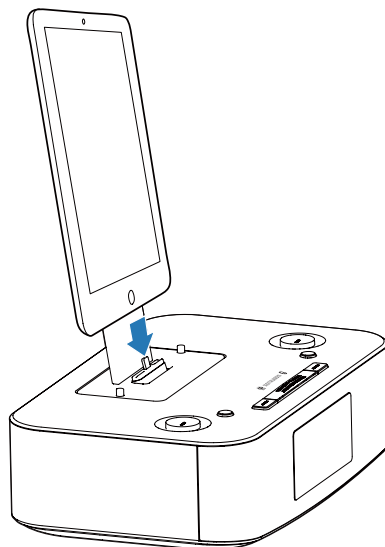
The unit supports the following iPod, iPhone, and iPad models:

Made for:

- iPod nano (7th generation)
- iPod touch (5th generation)
- iPad (4th generation)
- iPad mini
- iPhone 5

Listen to the iPod/iPhone/iPad

- 1 Press **SOURCE** repeatedly to select the **DOCK** source.
- 2 Load the iPhone/iPod/iPad.
↳ Once the iPod/iPhone/iPad is recognized, the clock on your unit is synchronized with your iPod/iPhone/iPad automatically.



- To pause/resume play, press **OK/▶||**.
- To skip to a track, press **PRESET +/- ◀▶**.
- To search during play, press and hold **PRESET +/- ◀▶**, then release to resume normal play.

Charge the iPod/iPhone/iPad

When the unit is connected to power; the docked iPod/iPhone/iPad begins to charge.



Tip

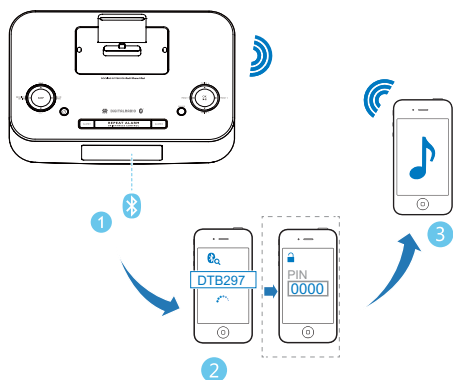
- For certain iPod models, it may take up to a minute before the charging indication appears.

Play from a Bluetooth device

Note

- Before you connect a Bluetooth-enabled device to the unit, familiarize yourself with the Bluetooth capabilities of the device.
- Keep the unit away from other electronic devices that may cause interference.
- The effective operation range between the unit and the paired device is approximately 10 meters (30 feet).
- Any obstacle between the unit and the device can reduce the operational range.

- 1 Press **SOURCE** repeatedly to select the BT (Bluetooth) source.
↳ The **BT** on the display panel starts blinking.
- 2 Activate the Bluetooth function on your Bluetooth device (see the device user manual).
- 3 Select 'PHILIPS DTB297' on your device for pairing.
↳ After successful pairing and connection, the unit beeps twice and the **BT** stops blinking.
 - For some devices, you may need to input "0000" as the pairing password.
- 4 Start music play on your Bluetooth enabled device.



Tip

- The unit can memorize up to 8 previously connected Bluetooth devices.

To disconnect the Bluetooth-enabled device:

- Deactivate Bluetooth on your device;
- Move the device beyond the communication range; or
- Press and hold **SCAN/PROG/▶▶**.

Play from Philips DigitalRadio application

An application **Philips DigitalRadio** is available on Apple App Store and Google Play.

To fully enjoy features of this unit, download and install the application onto your smart device.

With this application, after connection of your iPod/iPhone/iPad or your Bluetooth-enabled device to this unit, you can control BT, DAB, TUNER, and AUDIO IN play modes from your smart device.

Tip

- When you switch to the dock source, the Bluetooth connection disconnects automatically and the **Philips DigitalRadio** app stops working.

Play from an external device

You can also listen to an external audio device through this unit.

- 1 Press **SOURCE** repeatedly to select the AUDIO IN source.
- 2 Connect a 3.5mm audio link cable (not supplied) to:
 - the **AUDIO IN** socket (3.5mm) on the back of the unit.
 - the headphone socket on an external device.
 ↳ the screen displays text message [AUDIO IN] and the current time.
- 3 Start to play the device (see the device user manual).

5 Listen to radio

Note

- For optimal reception, fully extend the antenna and adjust its position, or connect an outdoor antenna.
- This product does not support MW (medium wave) radio reception.
- You can program a maximum of 20 DAB radio stations and 20 FM radio stations.
- Check with local retailer or go to www.WorldDAB.org for the applicable DAB radio frequencies in your area.
- Refer to "Product information" > "RDS program types" for more information about RDS radio stations.

Store DAB radio stations automatically

If no DAB radio station is stored, this product can search and store DAB radio stations automatically.

- 1 Press **SOURCE** repeatedly to select the DAB source.
↳ **[FULL SCAN]** (full scan) scrolls on the display panel.
- 2 Press **OK/▶▶** to start auto installation.
↳ This product automatically stores DAB radio stations with sufficient signal strength.
↳ After all available DAB radio stations are stored, the first stored DAB radio station is broadcast automatically.

Basic operations

Follow the instructions below for more functions.

Tune to the next FM radio station with sufficient signal strength at the lower/higher frequency:

Press and hold **TUNING +/- ▲ / ▼** to start auto search.

Tune to the FM radio station at a specific frequency:

Press **TUNING +/- ▲ / ▼** repeatedly until the frequency digitals are displayed.

Program FM radio stations automatically:

Press **SCAN/PROG/▶▶** to start auto programming.

Program DAB radio stations automatically:

Press **SCAN/PROG/▶▶** to start auto scanning and programming.

Program radio stations manually:

- 1) Tune to a radio station.
- 2) Press and hold **SCAN/PROG/▶▶** to activate programming.
- 3) Press **PRESET +/- ◀ / ▶** to assign a sequence number to the radio station.
- 4) Press **OK/▶▶** to confirm.
- 5) Repeat steps 1-4 to program more radio stations.

Tune to a preset radio station:

Press **PRESET +/- ◀ / ▶** repeatedly.

Switch the audio mode between [STEREO] (stereo) and [MONO] (monophonic) for FM radio:

Press **OK/▶▶** repeatedly.

Display available information about the current radio station:

Press **MENU/INFO/SET TIME/◀◀** repeatedly.

Use the menu

When you listen to radio, you can access the menu for control options.

- 1 Press and hold **MENU/INFO/SET TIME/◀◀**.
↳ FM mode: **[SCAN]** (scan) is displayed.
↳ DAB mode: **[FULL SCAN]** (full scan) is displayed.
- 2 Press **TUNING +/- ▲ / ▼** to select a menu option, and then press **OK/▶▶** to confirm the option or enter the lower-level menu.

FM mode:

[SCAN] (scan) Search and store radio stations automatically: **[STRONG]** (strong) for radio stations with strong signal only, **[ALL]** (all) for all radio stations.

[AUDIO] (audio) Select a sound mode: **[STEREO]** (stereo) or **[MONO]** (mono).

DAB mode:

[FULL SCAN] (full scan) Scan and store DAB radio stations within full range.

[MANUAL] (manual) Tune to a DAB radio station manually.

[PRUNE] (prune) Remove invalid stations from the station list.

[SYSTEM] (system) **[RESET]** (reset): Reset all radio settings to the factory default status.

[SW VER] (software version): Display the version of the current firmware.

[BT UPGRD] (Bluetooth upgrade): Upgrade the Bluetooth software if available.

[UPGRADE] (upgrade): Upgrade the firmware if available.

[BT RESET] (Bluetooth reset): Reset Bluetooth to the default setting.

[BT ON] (Bluetooth on): When the **[BT ON]** option on the app is set to 'ON', the Bluetooth connection remains active in standby mode. As a power-saving feature, when it is set to 'OFF', the Bluetooth connection disconnects automatically in standby mode and the **Philips DigitalRadio** app stops working.

- 3** Press **MENU/INFO/SET TIME/ ◀◀** to exit the menu.



6 Other features

Adjust volume level





- 1 During play, press **VOL +/-** to increase/decrease the volume level.

Set the alarm timer

You can set two alarms which go off at different time.

- 1 Make sure that you have set the clock correctly (see 'Set time and date' on page 9).
- 2 Press and hold **ALARM 1** or **ALARM 2** for 2 seconds.
 - ↳ The unit beeps.
 - ↳ **[SET AL]** (set alarm),  or , and the hour digits start to blink.
- 3 Press **TUNING +/- ▲ / ▼** to set the hour, then press **OK/▶||** to confirm.
 - ↳ The minute digits start to blink.
- 4 Repeat step 3 to set the minute, alarm date (work day, daily, or weekend), source (DOCK, BUZZ, DAB, or TUNER), and volume.
 - ↳ After confirmation of the volume setting, the unit beeps once again.

Activate and deactivate the alarm timer

- 1 Press **ALM 1** or **ALM 2** repeatedly to activate or deactivate the timer.
 - ↳ If the timer is activated,  or  is displayed.
 - ↳ If the timer is deactivated,  or  disappears.

Repeat alarm

- When the alarm rings, press **BRIGHTNESS/REP ALM**.
 - ↳ The alarm repeats ringing in several minutes.

Stop alarm ringing

- When the alarm rings, press the corresponding **ALARM 1** or **ALM 2** button.
 - ↳ The alarm stops but the alarm settings remain.

View the alarm settings

- Press **ALARM 1** or **ALM 2**.

Set the sleep timer

This unit can switch to standby automatically after a set period of time.

- Press **SLEEP** repeatedly to select a set period of time (in minutes).
 - ↳ When the sleep timer is activated, the display shows **z z**, and the volume will gradually decrease in the last 5 minutes.

To deactivate sleep timer

- Press **SLEEP** repeatedly until **[OFF]** (off) is displayed.
 - ↳ When the sleep timer is deactivated, **z z** disappears on the display.

Adjust display brightness

- Press **BRIGHTNESS/REP ALM** repeatedly to select different levels of display brightness.

7 Product information

Note

- Product information is subject to change without prior notice.

Specifications

Amplifier

Rated Output Power	2 x 5 W RMS
Frequency Response	80Hz - 16kHz, ±3dB
Signal to Noise Ratio	>67 dBA
AUDIO IN	600mV RMS 22kohm

FM

Tuning Range	FM 87.5 - 108 MHz
Tuning grid	50 KHz
- Mono, 26dB S/N Ratio	<22 dBf
- Stereo, 46dB S/N Ratio	<43 dBf
Search Sensitivity	<28dBf
Total Harmonic Distortion	<2%
Signal to Noise Ratio	>55 dB

DAB Tuner

Tuning Range	174–240 MHz (Band III)
Sensitivity	> 90 dB

Speakers

Speaker Impedance	4 ohm
Speaker Driver	57mm
Sensitivity	>84dB/m/W

Bluetooth®

Bluetooth® version	V2.1 + EDR
Frequency band	2.402-2.480 GHzISM Band
Range	10m (free space)

General information

AC/DC switching adapter	Model: OH- 1018E0752500U Input: 100-240V~ 50/60Hz 650mA; Output: 7.5 V === 2.5 A
Operation Power Consumption	19 W
Standby Power Consumption (clock display)	<1 W
Dimensions	
- Main Unit (W x H x D)	263 x135 x 165 mm
Weight	
- Main Unit	1.18 kg

RDS program types

NO TYPE	No RDS programme type
NEWS	News services
AFFAIRS	Politics and current affairs
INFO	Special information programs
SPORT	Sports
EDUCATE	Education and advanced training
DRAMA	Radio plays and literature
CULTURE	Culture, religion and society
SCIENCE	Science
VARIED	Entertainment programs
POP M	Pop music
ROCK M	Rock music
MOR M	Light music
LIGHT M	Light classical music
CLASSICS	Classical music
OTHER M	Special music programs
WEATHER	Weather
FINANCE	Finance
CHILDREN	Children's programs
SOCIAL	Social Affairs
RELIGION	Religion
PHONE IN	Phone In
TRAVEL	Travel
LEISURE	Leisure
JAZZ	Jazz Music
COUNTRY	Country Music
NATION M	National Music
OLDIES	Oldies Music
FOLK M	Folk Music
DOCUMENT	Documentary
TES	Alarm Test
ALARM	Alarm

8 Troubleshooting



Warning

- Never remove the casing of this apparatus.

To keep the warranty valid, never try to repair the system yourself.

If you encounter problems when using this apparatus, check the following points before requesting service. If the problem remains unsolved, go to the Philips web site (www.philips.com/welcome). When you contact Philips, ensure that the apparatus is nearby and the model number and serial number are available.

No power

- Ensure that the AC power plug of the unit is connected properly.
- Ensure that there is power at the AC outlet.
- Ensure that the batteries are inserted correctly.

No sound

- Adjust the volume.

No response from the unit

- Disconnect and reconnect the AC power plug, then turn on the unit again.

Poor radio reception

- Increase the distance between the unit and your TV or VCR.
- Fully extend the FM antenna.

Timer does not work

- Set the clock correctly.
- Switch on the timer.

Clock/timer setting erased

- Power has been interrupted or the power plug has been disconnected.
- Reset the clock/timer.

Music playback is unavailable on this unit even after successful Bluetooth connection.

- The device cannot be used to play music through this unit wirelessly.

The audio quality is poor after connection with a Bluetooth-enabled device.

- The Bluetooth reception is poor. Move the device closer to this unit or remove any obstacle between them.

Cannot connect with this unit.

- The device does not support the profiles required for this unit.
- The Bluetooth function of the device is not enabled. Refer to the user manual of the device to find out how to enable the function.
- This unit is not in pairing mode.
- This unit is already connected with another Bluetooth-enabled device. Disconnect that device and then try again.

The paired mobile device connects and disconnects constantly.

- The Bluetooth reception is poor. Move the device closer to this unit or remove any obstacle between them.
- Some mobile phones may connect and disconnect constantly when you make or end calls. This does not indicate any malfunction of this unit.
- For some devices, the Bluetooth connection may be deactivated automatically as a power-saving feature. This does not indicate any malfunction of this unit.



2014 © WOOX Innovations Limited.

All rights reserved.

This product was brought to the market by WOOX Innovations Limited or one of its affiliates, further referred to in this document as WOOX Innovations, and is the manufacturer of the product. WOOX Innovations is the warrantor in relation to the product with which this booklet was packaged. Philips and the Philips Shield Emblem are registered trademarks of Koninklijke Philips N.V.

DTB297_UM_10_V2.0



Free Manuals Download Website

<http://myh66.com>

<http://usermanuals.us>

<http://www.somanuals.com>

<http://www.4manuals.cc>

<http://www.manual-lib.com>

<http://www.404manual.com>

<http://www.luxmanual.com>

<http://aubethermostatmanual.com>

Golf course search by state

<http://golfingnear.com>

Email search by domain

<http://emailbydomain.com>

Auto manuals search

<http://auto.somanuals.com>

TV manuals search

<http://tv.somanuals.com>