



Digital Voice Tracer

LFH 600

LFH 620

For product information and support, visit
www.philips.com/dictation

EN	User manual	3
DE	Benutzerhandbuch	17
FR	Manuel de l'utilisateur	31

ES	Manual del usuario	45
IT	Manuale di istruzioni	59
NL	Gebruikershandleiding	73

PHILIPS

Download from Www.Somanuals.com. All Manuals Search And Download.

User manual

1	Welcome	4	6	Record	9
1.1	What's in the box	4	6.1	Record with the built-in microphone	9
1.2	Product highlights	4	6.2	Record with an external microphone	10
			6.3	Add index marks	10
2	Technical support and warranty	5	7	Playback	11
3	Important	6	7.1	Playback functions	11
3.1	Safety	6	7.2	Play features	12
3.2	Disposal of your old product	6	8	Delete	13
4	Your Digital Voice Tracer	7	9	Update the firmware	13
5	Get started	8	10	Customize settings	14
5.1	Insert the batteries	8	11	Troubleshooting	15
5.2	Power on/off	8	12	Technical data	16
5.3	Hold function	9			
5.4	Use the Voice Tracer with a computer	9			

1 Welcome

Congratulations on your purchase and welcome to Philips! To fully benefit from the support that Philips offers, visit our Website for support information such as user manuals, software downloads, warranty information and more: www.philips.com/dictation.

1.1 What's in the box



Voice Tracer



Batteries



Microphone-
earphone-combi*



Strap*



USB cable



User manual

1.2 Product highlights

Recording

- Records in popular MP3 format.
- Choose between three recording modes: HQ, SP and LP for extended recording times.
- An adjustable recording sensitivity avoids background noises and adjusts to the recording environment.
- Ample internal memory offers a large recording capacity and allows the recording and storage of long recordings.
- The voice-activated recording mode provides hands-free recording without having to worry about remembering to push the record button.

Playback

- Adjustable playback speed to play recordings in fast and slow playback modes.
- Set a complete or a portion of an audio file to play repeatedly with the repeat playback option.

Convenience

- Large screen for comfortable viewing.
- Enjoy up to 22 hours of continuous operation.*
- Speedily transfer recordings, music and data via high-speed USB 2.0.
- Index mark and temp mark features allow you to quickly find desired locations in a recording.
- Supports up to 99 recordings in each of four available folders to organize your files in a fast and easy way.
- As a USB mass storage device, the Voice Tracer offers a convenient way to save, back up and move files without special software or driver installations.

* Only available for some product versions.

2 Technical support and warranty

This Philips product was designed and manufactured to the highest quality standards. If your Philips product is not working correctly or is defective, contact your supplying Philips Speech Processing dealer who will provide you with the necessary information on how to proceed.

If you have questions that your dealer cannot answer or any other related question, visit www.philips.com/dictation to contact us.

No components are user-serviceable. Do not open or remove covers and do not insert objects not suitable for the specific connectors. Repairs may be made only by Philips service centers and official repair facilities. Failure to do so will void any warranty, stated or implied. Any operation expressly prohibited in this manual, any adjustments, or assembly procedures not recommended or authorized in this manual will void the warranty.

3 Important

3.1 Safety

- To avoid a short circuit, do not expose the product to rain or water.
- Do not expose the device to excessive heat caused by heating equipment or direct sunlight.
- Protect the cables from being pinched, particularly at plugs and the point where they exit from the unit.
- Back up your files. Philips is not responsible for any loss of data.

3.1.1 Hearing safety

Observe the following guidelines when using your headphones:

- Listen at reasonable volumes for reasonable periods of time.
- Be careful not to adjust the volume higher as your hearing adapts.
- Do not turn up the volume so high that you can't hear what's around you.
- You should use caution or temporarily discontinue use in potentially hazardous situations.
- Do not use headphones while operating a motorized vehicle, cycling, or skateboarding, etc. It may create a traffic hazard and is illegal in many areas.

Important (for models supplied with headphones):

Philips guarantees compliance with the maximum sound power of its audio players as determined by relevant regulatory bodies, but only with the original model of provided headphones. If these headphones need replacement, we recommend that you contact your retailer to order a Philips model identical to that of the original.

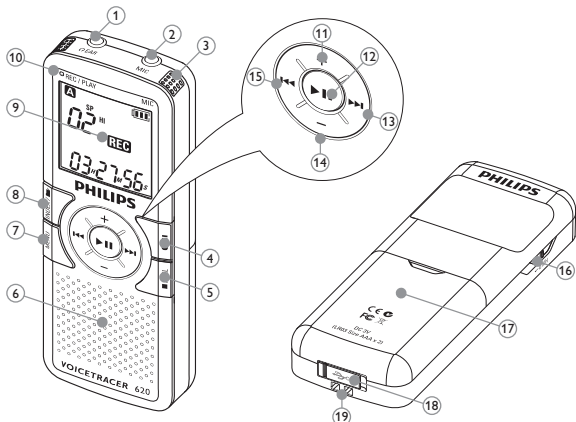
3.2 Disposal of your old product

- Your product is designed and manufactured with high quality materials and components that can be recycled and re-used.
- When this crossed-out wheeled bin symbol is attached to a product, it indicates that the product is covered by the European Directive 2002/96/EC.
- Become informed about your local separate collection system for electrical and electronic products.
- Act according to your local rules and do not dispose of old products with normal household waste. The correct disposal of old products will help prevent potential negative consequences for the environment and human health.
- Batteries (including built-in rechargeable batteries) contain substances that may pollute the environment. All batteries should be disposed of at an official collection point.



4 Your Digital Voice Tracer

- ① Headphone socket
- ② Microphone socket
- ③ Built-in microphone
- ④ Record / Pause / Power on
- ⑤ Stop / Display / Delete
- ⑥ Speaker
- ⑦ Menu
- ⑧ Index / Folder / Repeat
- ⑨ Display
- ⑩ Record / Play indicator
- ⑪ Volume up
- ⑫ Power on/off, Play/Pause, Play speed
- ⑬ Fast forward / File selection / Menu selection
- ⑭ Volume down
- ⑮ Fast rewind / File selection / Menu selection
- ⑯ Hold switch
- ⑰ Battery compartment
- ⑱ USB socket
- ⑲ Strap hole

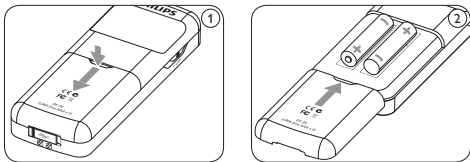


Download from [Www.Somanuals.com](http://www.Somanuals.com). All Manuals Search And Download.

5 Get started

5.1 Insert the batteries

- 1 Slide open the battery cover.
- 2 Place the batteries in the correct polarity as indicated and close the cover.



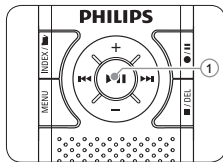
Note

- Remove the batteries if you will not be using the Voice Tracer for an extended period. Leaking batteries may damage the Voice Tracer.
- If the Voice Tracer malfunctions, remove the batteries and re-insert them.

- Stop the recorder before replacing the batteries. Removing the batteries while the recorder is in use may corrupt the file.
- When the batteries are nearly empty, the battery indicator blinks.

5.2 Power on/off

- 1 To power on, press the ►|| button ① until the display shows **HELLO** A.
- 2 To power off, press the ►|| button while the recorder is stopped until the display shows **BYE**.



5.3 Hold function

When the **HOLD** switch is in the Hold position, all buttons on the device are inactive. *On Hold* will be shown briefly on the display, and the display will turn off. Unlock the Voice Tracer by moving the **HOLD** switch to the *Off* position.

5.4 Use the Voice Tracer with a computer

As a USB mass storage device, the Voice Tracer offers a convenient way to save, back up and move files. The Voice Tracer connects to a computer using a USB connection and does not require special software to be installed. The Voice Tracer is automatically displayed as a removable drive, allowing you to simply drag and drop files to and from the unit.

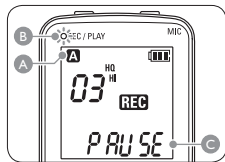
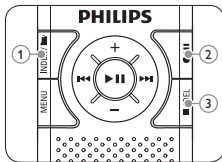
ⓘ Notes

- Do not disconnect the Voice Tracer while files are transferred from or to the device. Data is still being transferred while the record/play indicator light is blinking in orange.
- Do not format the drive of the Voice Tracer on a computer.

6 Record

6.1 Record with the built-in microphone

- 1 Press the **INDEX/** button (1) while the recorder is stopped to select the desired folder (A).
- 2 Press the **●/||** button (2) to start recording. The record/play indicator lights red (B). Point the built-in microphone toward the sound source.
- 3 To pause recording, press the **●/||** button (2). The record/play indicator will blink (B), and **PAUSE** will flash on the display (C). Press the **●/||** button again to resume recording.
- 4 To stop recording, press the **■/DEL** button (3).



Notes

- Set the desired voice activation function and recording mode before starting recording (see *Customize settings* on page 14 for details).
- Make a test recording to make sure that the Voice Tracer settings are correct.
- Press and hold **▶||** during recording to display the remaining recording time.
- Press **▶▶** during recording to create a new file.
- The maximum number of files in each folder is 99, for a total capacity of 396 files (99 files x 4 folders).
- If the recording time exceeds the available capacity or the number of files reaches 396, recording stops and 'FULL' will be displayed. Delete a few recordings or move them to a computer.
- Do not remove the batteries during recording. This may cause the recorder to malfunction.
- If recording for a prolonged period of time, replace the batteries before beginning.

6.2 Record with an external microphone

To record with an external microphone, connect the microphone to the microphone socket and follow the same procedure as for the built-in microphone.

6.3 Add index marks

Index marks can be used to mark certain points in a recording as points of reference.

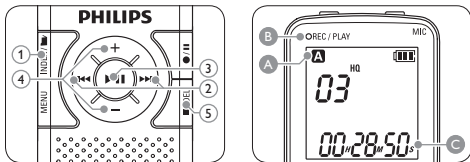
- 1 Press the **INDEX/■** button during recording to add an index mark. The index number is displayed for one second.

Notes

- The **INDEX** icon indicates that the recording contains index marks.
- Up to 32 index marks can be set per file.

7 Playback

- 1 Press the **INDEX/** button (1) while the recorder is stopped to select the desired folder (A).
- 2 Press the **◀▶** or **▶▶** button (2) to select the file to playback.
- 3 Press the **▶||** button (3). The playback time will be shown on the display, and the green LED (B) will light.
- 4 Adjust the volume using the **+** and **-** buttons (4).
- 5 To stop playback, press the **■/DEL** button (5). The total playback time (C) of the current file will be shown on the display.
- 6 Press the **▶||** button again to continue playback from the previous position.



Note

When headphones are connected to the **EAR** jack, the recorder speaker will be switched off.

7.1 Playback functions

7.1.1 Slow, fast, normal playback

Press and hold the **▶||** button for 1 second or longer to switch between normal, slow and fast playback.

7.1.2 Search

Press and hold the **◀▶** or **▶▶** button during playback to scan backward or forward in the current file at a fast speed. Release the button to resume playback at the selected speed.

7.1.3 Rewinding and forwarding

Press the **◀▶** or **▶▶** button during playback to rewind to the beginning

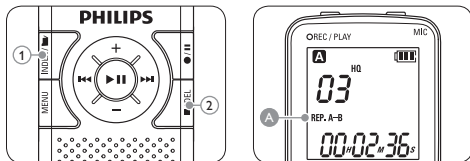
of the file being played or forward to the next file, respectively. If the file contains index marks, playback begins at that point.

7.2 Play features

You can set the Voice Tracer to play files repeatedly or randomly.

7.2.1 Repeat a sequence

- 1 To repeat or loop a sequence in a song, press the **INDEX/** button **①** at the chosen starting point. **REP. A – B** flashes on the screen **A**.
- 2 Press the **INDEX/** button again at the chosen end point. The repeat sequence begins.
- 3 Press the **/DEL** button **②** to stop playback or press the **INDEX/** button to return to normal playback.



7.2.2 Repeat a file or folder

- 1 Press and hold the **INDEX/** button for 1 second or longer during playback to switch between play modes (repeat file, repeat folder or normal playback).

Icon	Meaning
REP. FILE	Play one file repeatedly
REP. FOLD	Play all files within folder repeatedly

8 Delete

- 1 Press the **INDEX/** button while the recorder is stopped to select the desired folder.
- 2 Press and hold the **/DEL** button for 1 second or longer. **DELETE** appears on the screen.
- 3 Press the **◀▶** or **▶▶** button to select a delete option:

Icon	Meaning
FILE	Delete a single file
FOLD	Delete all files in a folder
INDEX	Delete all index marks in a file

- 4 Press the **▶▶** button.
- 5 Press the **◀▶** or **▶▶** button to select the file, the folder or the file containing the index marks to be deleted.
- 6 Press the **▶▶** button again. **N** (No) is displayed.
- 7 Press the **◀▶** or **▶▶** button to select **Y** (Yes).
- 8 Press the **▶▶** button to confirm.

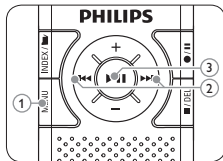
Note

Sequential file numbers are reassigned automatically.

9 Update the firmware

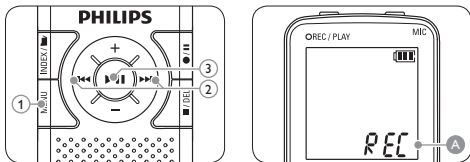
Your Voice Tracer is controlled by an internal program called firmware. Regularly check www.philips.com/dictation for new firmware updates.

- 1 Download the firmware update for your Voice Tracer model from www.philips.com/dictation > *Support Center* > *Software Downloads* and save the file in the root directory of the Voice Tracer.
- 2 Press the **MENU** button (1) while the recorder is stopped to open the menu.
- 3 Press the **◀▶** or **▶▶** button (2) to select **UPDATE** (A).
- 4 Press the **▶▶** button (3). **N** (No) is displayed.
- 5 Press the **◀▶** or **▶▶** button (2) to select **Y** (Yes).
- 6 Press the **▶▶** button again to install the new firmware.



10 Customize settings

- 1 Press the **MENU** button (1) while the recorder is stopped.
- 2 Press the **◀▶** or **▶▶** button (2) to select a menu item (A).
- 3 Press the **▶||** button (3) to enter a sub-menu.
- 4 Press the **◀▶** or **▶▶** button (2) to change a setting.
- 5 Press the **▶||** button (3) to confirm your selection.
- 6 Press the **MENU** button (1) to exit the current settings screen.



Menu	Setting	Description
REC	HQ	Choose between three recording modes: HQ, SP and LP for extended recording times. See <i>Technical data</i> on page 16 for details about available recording modes and recording times.
	SP	
	LP	
SENSE	HI	Adjust the recording sensitivity to avoid recording background noises and to adjust to the recording environment.
	LO	
BEEP	On	The recorder gives sound feedback about button operations or errors.
	Off	
VA	On	Voice-activated recording is a convenience feature for hands-free recording. When voice-activated recording is enabled, recording will start when you begin speaking. When you stop speaking, the recorder will automatically pause recording after three seconds of silence, and resume only when you begin speaking again.
	Off	
FORMAT	Yes	Delete all files on the recorder including programmed radio stations. Transfer any important files to a computer before formatting the recorder.
	No	
VER		Display the firmware version and the release date.

11 Troubleshooting

My recorder cannot power on

The batteries may be out of power or not inserted correctly. Replace the batteries with new ones and verify that the batteries are inserted correctly.

My recorder does not record anything

The recorder may be in **HOLD** mode. Slide the **HOLD** switch to the Off position.

The maximum number of recordings may be reached or the recording capacity is full. Delete some recordings or move recordings to an external device.

I cannot hear anything from the speaker

The headphones may be plugged in. Remove the headphones.

The volume is at the lowest setting. Adjust the volume.

My recorder cannot play recordings

The recorder may be in **HOLD** mode. Slide the **HOLD** switch to the Off position.

The batteries may be out of power or not inserted correctly. Replace the batteries with new ones and verify that the batteries are inserted correctly.

Nothing has been recorded yet. Check the number of recordings.

My recorder cannot stop, pause, play or record

The recorder may be in **HOLD** mode. Slide the **HOLD** switch to the Off position.

I cannot hear anything through the headphones

The headphones may not be plugged in properly. Plug in the headphones properly.

The volume is at the lowest setting. Adjust the volume.

12 Technical data

Connectivity

- USB: High-speed 2.0 mini-USB
- Microphone: 3.5 mm, impedance 2.2 k Ω
- Headphone: 3.5 mm, impedance 16 Ω or more

Display

- Type: LCD, segment
- Diagonal screen size: 39 mm / 1.5 in.

Recording format

- .mp3 (Mpeg 1/Audio Layer 3)

Recording media

- Built-in flash memory

Microphone

- Built-in: mono
- External: mono

Recording time

- **LFH 600 (512 MB):**
 - HQ mode (.mp3/mono): 16.5 hours
 - SP mode (.mp3/mono): 22 hours
 - LP mode (.mp3/mono): 33.5 hours
- **LFH 620 (1024 MB):**
 - HQ mode (.mp3/mono): 35 hours
 - SP mode (.mp3/mono): 46.5 hours
 - LP mode (.mp3/mono): 69.5 hours

Compression rate / sampling frequency

- HQ mode: 64 kbps / 22 kHz
- SP mode: 48 kbps / 16 kHz
- LP mode: 32 kbps / 16 kHz

Speaker

- Built-in 30 mm round dynamic speaker
- Output power: 110 mW

Operating conditions

- Temperature: 5° – 45° C / 41° – 113° F
- Humidity: 10 % – 90 %

Power

- Battery type: two Philips AAA alkaline batteries (LR03 or R03)
- Battery life (LP mode):
 - LFH 600: 30 hours
 - LFH 620: 45 hours

Dimensions

- Product dimensions (W × D × H):
40 × 18.4 × 108 mm / 1.6 × 0.7 × 4.3 in.
- Weight: 80 g / 2.8 oz. incl. batteries

System requirements

- Windows Vista / XP / 2000, Mac OS X, Linux
- Free USB port



Declaration of Conformity
Tested to comply with FCC standards
FOR HOME OR OFFICE USE

Model Number: LFH 600, LFH 620

Trade Name: Philips Digital Voice Tracer 600 / 620

Responsible Party: Philips Speech Processing

Address: 64 Perimeter Center East, Atlanta, GA 30346, USA

Telephone number: 888-260-6261

Website: www.philips.com/dictation

This device complies with part 15 of FCC rules. Operation is subject to the following two conditions:

- 1) This device may not cause harmful interference.
- 2) This device must accept any interference received, including interference that may cause undesired operation.

Disclaimer and notices

Philips performs extensive testing with the most popular configurations. However, since PC add-ons and device drivers are updated continually, conflict-free operation cannot be guaranteed.



Download from Www.Somanuals.com. All Manuals Search And Download.



Discover the comprehensive range of high-end dictation products from Philips
www.philips.com/dictation

Specifications are subject to change without notice.

Trademarks are the property of Royal Philips Electronics or their respective owners.

© 2008 Royal Philips Electronics. All rights reserved.

Document version 1.0, 2008/08/29.

Download from Www.Somanuals.com. All Manuals Search And Download.

Free Manuals Download Website

<http://myh66.com>

<http://usermanuals.us>

<http://www.somanuals.com>

<http://www.4manuals.cc>

<http://www.manual-lib.com>

<http://www.404manual.com>

<http://www.luxmanual.com>

<http://aubethermostatmanual.com>

Golf course search by state

<http://golfingnear.com>

Email search by domain

<http://emailbydomain.com>

Auto manuals search

<http://auto.somanuals.com>

TV manuals search

<http://tv.somanuals.com>