

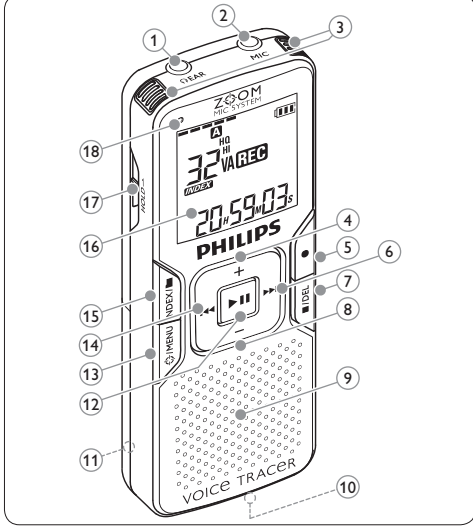
Digital Voice Tracer

LFH0862
LFH0867
LFH0868
LFH0882
LFH0885
LFH0888
LFH0895

For product information and support, visit www.philips.com

EN User manual
DE Benutzerhandbuch
FR Manuel de l'utilisateur
ES Manual del usuario

PHILIPS



English

1 Welcome

Congratulations on your purchase and welcome to Philips! To fully benefit from the support that Philips offers, visit our Website for support information such as user manuals, software downloads, warranty information and more. www.philips.com

1.1 Product highlights

- Record in the popular MP3 format
- Speedily transfer recordings and data via high-speed USB 2.0
- The zoom mic system focuses on sound in front of the Voice Tracer, while reducing the pickup of side and rear sounds. It is recommended for recording lectures, speeches, and other situations where the speaker is distant from your recording position. The zoom function has two sound/distance settings to maximize the audio effect you want to achieve.
- Record in the popular MP3 format
- Speedily transfer recordings and data via high-speed USB 2.0
- The zoom mic system focuses on sound in front of the Voice Tracer, while reducing the pickup of side and rear sounds. It is recommended for recording lectures, speeches, and other situations where the speaker is distant from your recording position. The zoom function has two sound/distance settings to maximize the audio effect you want to achieve.
- Voice-activated recording for hands-free note taking
- USB mass storage ensures maximum compatibility
- Instant one-touch recording – from power-off to record mode
- Enjoy MP3 and WMA music playback

2 Important

2.1 Safety

- To avoid a short circuit, do not expose the product to rain or water.
- Do not expose the device to excessive heat caused by heating equipment or direct sunlight.
- Protect the cables from being pinched, particularly at plugs and the device where they exit from the unit.
- Back up your files. Philips is not responsible for any loss of data.

2.1.1 Hearing safety

- Observe the following guidelines when using your headphones:
 - Do not use headphones while operating a motorized vehicle, cycling, or skateboarding, etc. It may create a traffic hazard and is illegal in many areas.
 - Do not turn up the volume so high that you can't hear what's around you.
 - You should use caution or temporarily discontinue use in potentially hazardous situations.
 - Do not use headphones while operating a motorized vehicle, cycling, or skateboarding, etc. It may create a traffic hazard and is illegal in many areas.

Important (for models supplied with headphones): Philips guarantees compliance with the maximum sound power of its audio players as determined by relevant regulatory bodies, but only with the original content of provided headphones. If these headphones need replacement, we recommend that you contact your retailer to order a Philips model identical to that of the original.

2.2 Disposal of your old product
Your product is designed and manufactured with high quality materials and components that can be recycled and reused.
When this crossed-out wheeled bin symbol is attached to a product, it indicates that the product is covered by the European directive 2002/96/EC.
Become informed about your local separate collection system for electrical and electronic products.

According to your local rules and do not dispose of old products with normal household waste. The correct disposal of old products will help prevent potential negative consequences for the environment and human health.
Batteries (including built-in rechargeable batteries) contain substances that may pollute the environment. All batteries should be disposed of at an official collection point.

3 Your Digital Voice Tracer

- Headphone socket, remote control
- Battery compartment
- Microphone socket, line-in
- Volume up
- Build-in microphone
- Menu, FM, radio, zoom function
- Fast rewind, file selection
- Record, pause, power on
- Fast forward, file selection
- Index, folder, repeat
- Hold switch
- Volume down
- Recycle/play indicator
- Speaker

4 Get started

- 4.1 Insert the batteries**
The Voice Tracer can be operated with the rechargeable Philips batteries LFH9154 or AAA alkaline batteries.
- Slide open the battery cover.
- Place the batteries in the correct polarity as indicated and make sure the contacts are clean.
- Notes**
 - Do not mix batteries of different types and/or brands.
 - Remove the batteries if you will not be using the Voice Tracer for an extended period. Leaking batteries may damage the Voice Tracer. If the Voice Tracer malfunctions, remove the batteries and re-insert them.
 - Stop the recorder before replacing the batteries. Removing the batteries while the recorder is on will corrupt the files.
 - When the batteries are nearly empty, the battery indicator blinks. If it takes longer than 2 minutes to replace the battery, you may have to reset the time.

4.2 Charge the batteries

The rechargeable Philips batteries LFH9154 can be charged in the Voice Tracer. When the Voice Tracer is connected to a computer, the rechargeable batteries are automatically charged. A complete recharge cycle takes about 2.5 hours.

- 4.3 Record with the built-in microphone**
Press the **INDEX** button while the recorder is stopped to select the desired folder. Press the **▶▶▶** button to select the file to play back. Refer to chapter 6.1.1 for details about selecting a file.
- Press the **▶▶▶** button to advance to the settings for the file.
- Press the **▶▶▶** button to continue to set the month, day, 12/24-hour system and the time in the same way.
- Notes**
 - The date and time can be changed at any time using the menu. See chapter 7 for more information.
 - Press the **▶▶▶** button to select the file to play back. Refer to chapter 6.1.1 for details about selecting a file.
 - Press the **▶▶▶** button to advance to the settings for the file.
 - Press the **▶▶▶** button to continue to set the month, day, 12/24-hour system and the time in the same way.

4.4 Charge the batteries
The rechargeable Philips batteries LFH9154 can be charged in the Voice Tracer. When the Voice Tracer is connected to a computer, the rechargeable batteries are automatically charged. A complete recharge cycle takes about 2.5 hours.

- 4.5 Set date and time**
When the batteries are installed for the first time, you will be prompted to set the date and time.
- ▶▶▶** LOCK will be shown on the display. Press the **▶▶▶** button. The indicator flashes. Press the **▶▶▶** button to select the year.
- Press the **▶▶▶** button to select the month.
- Press the **▶▶▶** button to advance to the settings for the file.
- Press the **▶▶▶** button to continue to set the month, day, 12/24-hour system and the time in the same way.

4.6 Display information
Press the **▶▶▶** button while the recorder is stopped to rotate the current file on the display. Total playback time of the current file > time to date > remaining recording time > recording time of the current file > recording date of the current file.

4.7 Use the Voice Tracer with a computer
As a USB mass storage device, the Voice Tracer offers a convenient way to save, back up and move files. The Voice Tracer connects to a computer using a USB connection and does not require special software to be installed. The Voice Tracer is automatically displayed as a removable drive, allowing you to simply drag and drop files to and from the unit.

4.8 Connect the remote control (LFH0885 only)
The remote control can be used to start and pause recording, to add a new file and to add an index mark.

4.9 Use the docking station (LFH0868/LFH0888 only)
The docking station can be used to upload files from your Voice Tracer to a computer and recharge the batteries.

4.4 Hold function
When the HOLD switch is in the Hold position, all buttons on the device are inactive. On Hold will be shown briefly on the display, and the display will turn off. Unlock the Voice Tracer by moving the HOLD switch to the OFF position.

4.5 Set date and time
When the batteries are installed for the first time, you will be prompted to set the date and time.

- ▶▶▶** LOCK will be shown on the display. Press the **▶▶▶** button. The indicator flashes. Press the **▶▶▶** button to select the year.
- Press the **▶▶▶** button to select the month.
- Press the **▶▶▶** button to advance to the settings for the file.
- Press the **▶▶▶** button to continue to set the month, day, 12/24-hour system and the time in the same way.

4.6 Display information
Press the **▶▶▶** button while the recorder is stopped to rotate the current file on the display. Total playback time of the current file > time to date > remaining recording time > recording time of the current file > recording date of the current file.

4.7 Use the Voice Tracer with a computer
As a USB mass storage device, the Voice Tracer offers a convenient way to save, back up and move files. The Voice Tracer connects to a computer using a USB connection and does not require special software to be installed. The Voice Tracer is automatically displayed as a removable drive, allowing you to simply drag and drop files to and from the unit.

4.8 Connect the remote control (LFH0885 only)
The remote control can be used to start and pause recording, to add a new file and to add an index mark.

4.9 Use the docking station (LFH0868/LFH0888 only)
The docking station can be used to upload files from your Voice Tracer to a computer and recharge the batteries.

4.5 Use the zoom function
When the zoom function is active, the microphones focus on sound directly in front of the Voice Tracer, while reducing the pickup of side and rear sounds. It is recommended for recording lectures, speeches, and other situations where the speaker is distant from your recording position. The zoom function has two sound/distance settings to maximize the audio effect you want to achieve.

4.6 Display information
Press the **▶▶▶** button while the recorder is stopped to rotate the current file on the display. Total playback time of the current file > time to date > remaining recording time > recording time of the current file > recording date of the current file.

4.7 Use the Voice Tracer with a computer
As a USB mass storage device, the Voice Tracer offers a convenient way to save, back up and move files. The Voice Tracer connects to a computer using a USB connection and does not require special software to be installed. The Voice Tracer is automatically displayed as a removable drive, allowing you to simply drag and drop files to and from the unit.

4.8 Connect the remote control (LFH0885 only)
The remote control can be used to start and pause recording, to add a new file and to add an index mark.

4.9 Use the docking station (LFH0868/LFH0888 only)
The docking station can be used to upload files from your Voice Tracer to a computer and recharge the batteries.

4.5 Use the zoom function
When the zoom function is active, the microphones focus on sound directly in front of the Voice Tracer, while reducing the pickup of side and rear sounds. It is recommended for recording lectures, speeches, and other situations where the speaker is distant from your recording position. The zoom function has two sound/distance settings to maximize the audio effect you want to achieve.

4.6 Display information
Press the **▶▶▶** button while the recorder is stopped to rotate the current file on the display. Total playback time of the current file > time to date > remaining recording time > recording time of the current file > recording date of the current file.

4.7 Use the Voice Tracer with a computer
As a USB mass storage device, the Voice Tracer offers a convenient way to save, back up and move files. The Voice Tracer connects to a computer using a USB connection and does not require special software to be installed. The Voice Tracer is automatically displayed as a removable drive, allowing you to simply drag and drop files to and from the unit.

4.8 Connect the remote control (LFH0885 only)
The remote control can be used to start and pause recording, to add a new file and to add an index mark.

4.9 Use the docking station (LFH0868/LFH0888 only)
The docking station can be used to upload files from your Voice Tracer to a computer and recharge the batteries.

4.5 Use the zoom function
When the zoom function is active, the microphones focus on sound directly in front of the Voice Tracer, while reducing the pickup of side and rear sounds. It is recommended for recording lectures, speeches, and other situations where the speaker is distant from your recording position. The zoom function has two sound/distance settings to maximize the audio effect you want to achieve.

4.6 Display information
Press the **▶▶▶** button while the recorder is stopped to rotate the current file on the display. Total playback time of the current file > time to date > remaining recording time > recording time of the current file > recording date of the current file.

4.7 Use the Voice Tracer with a computer
As a USB mass storage device, the Voice Tracer offers a convenient way to save, back up and move files. The Voice Tracer connects to a computer using a USB connection and does not require special software to be installed. The Voice Tracer is automatically displayed as a removable drive, allowing you to simply drag and drop files to and from the unit.

4.8 Connect the remote control (LFH0885 only)
The remote control can be used to start and pause recording, to add a new file and to add an index mark.

4.5 Use the zoom function
When the zoom function is active, the microphones focus on sound directly in front of the Voice Tracer, while reducing the pickup of side and rear sounds. It is recommended for recording lectures, speeches, and other situations where the speaker is distant from your recording position. The zoom function has two sound/distance settings to maximize the audio effect you want to achieve.

4.6 Display information
Press the **▶▶▶** button while the recorder is stopped to rotate the current file on the display. Total playback time of the current file > time to date > remaining recording time > recording time of the current file > recording date of the current file.

4.7 Use the Voice Tracer with a computer
As a USB mass storage device, the Voice Tracer offers a convenient way to save, back up and move files. The Voice Tracer connects to a computer using a USB connection and does not require special software to be installed. The Voice Tracer is automatically displayed as a removable drive, allowing you to simply drag and drop files to and from the unit.

4.8 Connect the remote control (LFH0885 only)
The remote control can be used to start and pause recording, to add a new file and to add an index mark.

4.9 Use the docking station (LFH0868/LFH0888 only)
The docking station can be used to upload files from your Voice Tracer to a computer and recharge the batteries.

4.5 Use the zoom function
When the zoom function is active, the microphones focus on sound directly in front of the Voice Tracer, while reducing the pickup of side and rear sounds. It is recommended for recording lectures, speeches, and other situations where the speaker is distant from your recording position. The zoom function has two sound/distance settings to maximize the audio effect you want to achieve.

4.6 Display information
Press the **▶▶▶** button while the recorder is stopped to rotate the current file on the display. Total playback time of the current file > time to date > remaining recording time > recording time of the current file > recording date of the current file.

4.7 Use the Voice Tracer with a computer
As a USB mass storage device, the Voice Tracer offers a convenient way to save, back up and move files. The Voice Tracer connects to a computer using a USB connection and does not require special software to be installed. The Voice Tracer is automatically displayed as a removable drive, allowing you to simply drag and drop files to and from the unit.

4.8 Connect the remote control (LFH0885 only)
The remote control can be used to start and pause recording, to add a new file and to add an index mark.

4.9 Use the docking station (LFH0868/LFH0888 only)
The docking station can be used to upload files from your Voice Tracer to a computer and recharge the batteries.

4.5 Use the zoom function
When the zoom function is active, the microphones focus on sound directly in front of the Voice Tracer, while reducing the pickup of side and rear sounds. It is recommended for recording lectures, speeches, and other situations where the speaker is distant from your recording position. The zoom function has two sound/distance settings to maximize the audio effect you want to achieve.

4.6 Display information
Press the **▶▶▶** button while the recorder is stopped to rotate the current file on the display. Total playback time of the current file > time to date > remaining recording time > recording time of the current file > recording date of the current file.

4.7 Use the Voice Tracer with a computer
As a USB mass storage device, the Voice Tracer offers a convenient way to save, back up and move files. The Voice Tracer connects to a computer using a USB connection and does not require special software to be installed. The Voice Tracer is automatically displayed as a removable drive, allowing you to simply drag and drop files to and from the unit.

4.8 Connect the remote control (LFH0885 only)
The remote control can be used to start and pause recording, to add a new file and to add an index mark.

4.9 Use the docking station (LFH0868/LFH0888 only)
The docking station can be used to upload files from your Voice Tracer to a computer and recharge the batteries.

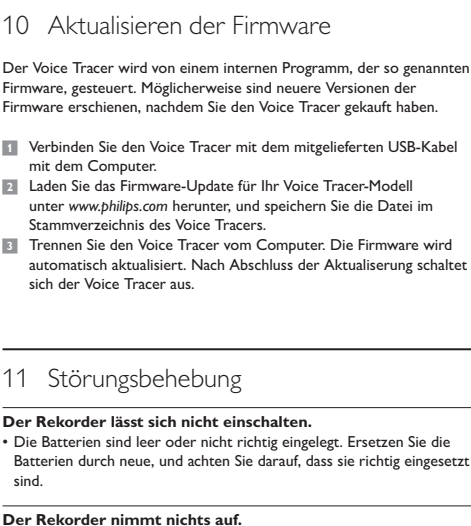
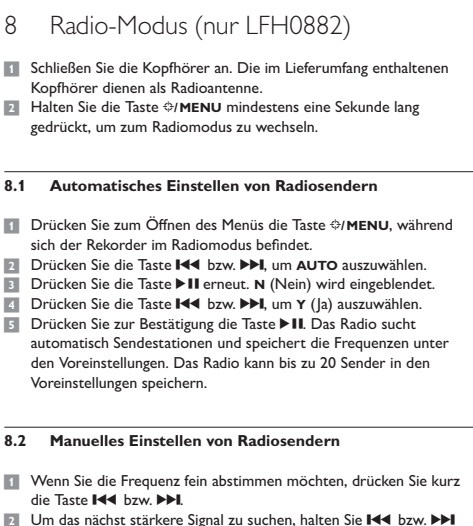
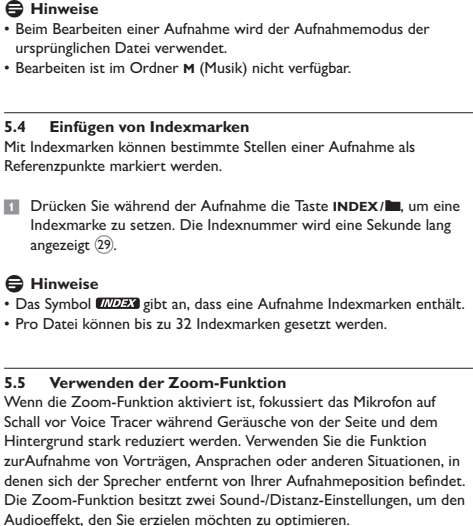
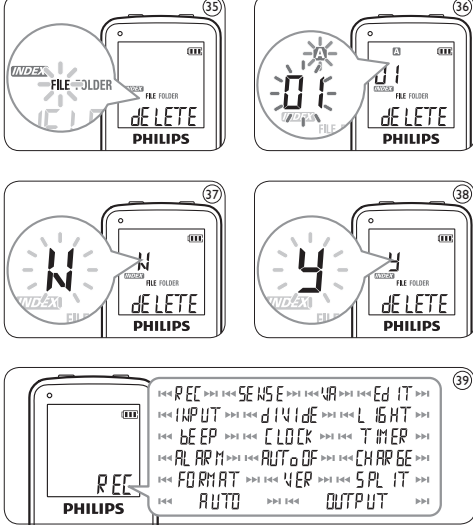
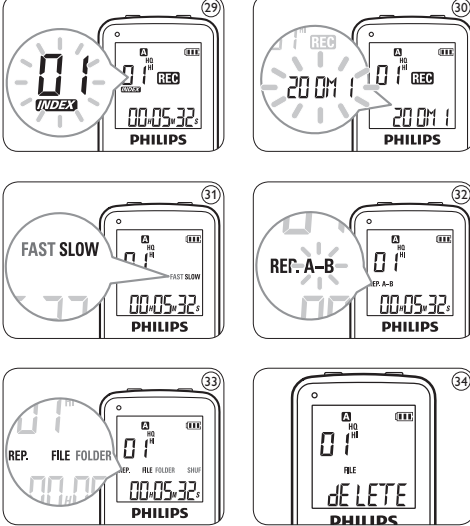
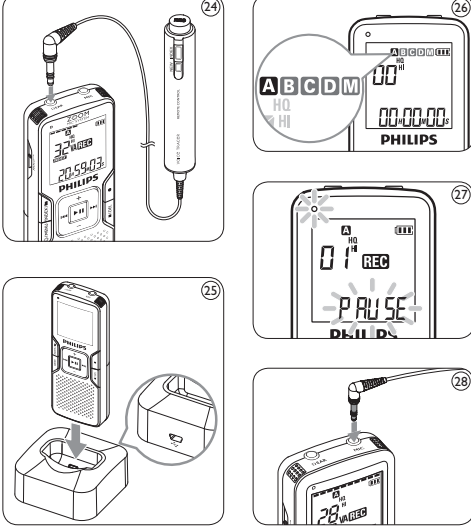
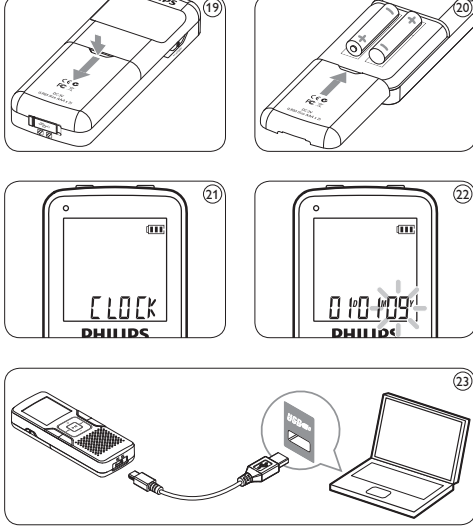
4.5 Use the zoom function
When the zoom function is active, the microphones focus on sound directly in front of the Voice Tracer, while reducing the pickup of side and rear sounds. It is recommended for recording lectures, speeches, and other situations where the speaker is distant from your recording position. The zoom function has two sound/distance settings to maximize the audio effect you want to achieve.

4.6 Display information
Press the **▶▶▶** button while the recorder is stopped to rotate the current file on the display. Total playback time of the current file > time to date > remaining recording time > recording time of the current file > recording date of the current file.

4.7 Use the Voice Tracer with a computer
As a USB mass storage device, the Voice Tracer offers a convenient way to save, back up and move files. The Voice Tracer connects to a computer using a USB connection and does not require special software to be installed. The Voice Tracer is automatically displayed as a removable drive, allowing you to simply drag and drop files to and from the unit.

4.8 Connect the remote control (LFH0885 only)
The remote control can be used to start and pause recording, to add a new file and to add an index mark.

4.9 Use the docking station (LFH0868/LFH0888 only)
The docking station can be used to upload files from your Voice Tracer to a computer and recharge the batteries.



8 Radio mode (LFH0882 only)

- Connect the headphones. The supplied headphones serve as a radio antenna.
- Press and hold the **▶▶▶** button for 1 second or longer to enter the radio mode.

8.1 Auto tune radio stations
Press the **▶▶▶** button while the recorder is in radio mode to switch between frequency and preset mode.

8.2 Manually tune to a radio station
To fine-tune frequency, quickly press the **▶▶▶** button. To search for the next stronger signal, press and hold **▶▶▶** button. To stop playing, press the **▶▶▶** button for a preset.

8.3 Play a preset radio station
Press the **▶▶▶** button while the recorder is in radio mode to switch between frequency and preset mode.

8.4 Delete a preset radio station
Press the **▶▶▶** button while the recorder is in radio mode to switch between frequency and preset mode.

8.5 Record from FM radio
Manually tune to a radio station or play a preset radio station.

10 Update the firmware

Your Voice Tracer is controlled by an internal program called firmware. New versions of the firmware may have been released after you have purchased the Voice Tracer.

- Connect the Voice Tracer to a computer using the supplied USB cable.
- Download the firmware updates for your Voice Tracer model from www.philips.com and save the files in the root directory of the Voice Tracer.
- Disconnect the Voice Tracer from the computer. The firmware is updated automatically and when finished the Voice Tracer will power off.

10.1 Connect the Voice Tracer to a computer using the supplied USB cable.
Download the firmware updates for your Voice Tracer model from www.philips.com and save the files in the root directory of the Voice Tracer.

10.2 Disconnect the Voice Tracer from the computer.
The firmware is updated automatically and when finished the Voice Tracer will power off.

10.3 Play a preset radio station
Press the **▶▶▶** button while the recorder is in radio mode to switch between frequency and preset mode.

10.4 Delete a preset radio station
Press the **▶▶▶** button while the recorder is in radio mode to switch between frequency and preset mode.

10.5 Record from FM radio
Manually tune to a radio station or play a preset radio station.

Deutsch

1 Willkommen

Herzlich willkommen bei Philips. Wir freuen uns, dass Sie sich für ein Gerät aus unserem Haus entschieden haben. Auf unserer Website erhalten Sie umfassende Unterstützung von Philips in Form von Benutzerhandbüchern, Software-downloads, Garantiefinformationen und vielen mehr. www.philips.com

1.1 Produkt highlights

- Aufnahme im gängigen MP3-Format
- Schnelle Übertragung von Aufnahmen und Daten über die USB 2.0
- Das Zoom Mic-System fokussiert auf Schall vor dem Mikrofon während Geräusche von der Seite und aus dem Hintergrund stark reduziert werden. Verwenden Sie die Funktion zur Aufnahme von Vorträgen, Ansprachen oder anderen Situationen, in denen sich der Sprecher entfernt von Ihrer Aufnahmeposition befindet. Die Zoom-Funktion besitzt zwei Sound-/Distanz-Einstellungen, um den Audioeffekt, den Sie erzielen möchten zu optimieren.
- Voice-aktiviertes Aufnahmefunktion für handsfreie Notizen
- USB-Massenspeicher sorgt für eine maximale Kompatibilität
- One-Touch Recording – von ausgeschaltet zur Aufnahme mit nur einem Tastendruck
- Genießen Sie die Musikwiedergabe im MP3- und WMA-Format

1.2 Sicherheit
Das Gerät vor Regen oder Wasser schützen, um einen Kurzschluss zu vermeiden.

1.3 Gehörtschutz
Die Kopfhörer nicht zu laut verwenden.

1.4 Auswählen einer Datei/Auffinden einer Datei
Drücken Sie die Taste **▶▶▶** während der Wiedergabe gedrückt, um die aktuelle Datei zu springen.

1.5 Wiederholen einer Sequenz
Drücken Sie die Taste **▶▶▶** während der Wiedergabe gedrückt, um die aktuelle Datei zu springen.

1.6 Wiederholte Wiedergabe
Drücken Sie die Taste **▶▶▶** während der Wiedergabe gedrückt, um die aktuelle Datei zu springen.

1.7 Suchen
Drücken Sie die Taste **▶▶▶** während der Wiedergabe gedrückt, um die aktuelle Datei zu springen.

1.8 Wiederholte Wiedergabe
Drücken Sie die Taste **▶▶▶** während der Wiedergabe gedrückt, um die aktuelle Datei zu springen.

1.9 Suchen
Drücken Sie die Taste **▶▶▶** während der Wiedergabe gedrückt, um die aktuelle Datei zu springen.

1.10 Wiederholte Wiedergabe
Drücken Sie die Taste **▶▶▶** während der Wiedergabe gedrückt, um die aktuelle Datei zu springen.

1.11 Suchen
Drücken Sie die Taste **▶▶▶** während der Wiedergabe gedrückt, um die aktuelle Datei zu springen.

1.12 Wiederholte Wiedergabe
Drücken Sie die Taste **▶▶▶** während der Wiedergabe gedrückt, um die aktuelle Datei zu springen.

1.13 Suchen
Drücken Sie die Taste **▶▶▶** während der Wiedergabe gedrückt, um die aktuelle Datei zu springen.

1.14 Wiederholte Wiedergabe
Drücken Sie die Taste **▶▶▶** während der Wiedergabe gedrückt, um die aktuelle Datei zu springen.

1.15 Suchen
Drücken Sie die Taste **▶▶▶** während der Wiedergabe gedrückt, um die aktuelle Datei zu springen.

1.16 Wiederholte Wiedergabe
Drücken Sie die Taste **▶▶▶** während der Wiedergabe gedrückt, um die aktuelle Datei zu springen.

1.17 Suchen
Drücken Sie die Taste **▶▶▶** während der Wiedergabe gedrückt, um die aktuelle Datei zu springen.

1.18 Wiederholte Wiedergabe
Drücken Sie die Taste **▶▶▶** während der Wiedergabe gedrückt, um die aktuelle Datei zu springen.

1.19 Suchen
Drücken Sie die Taste **▶▶▶** während der Wiedergabe gedrückt, um die aktuelle Datei zu springen.

1.20 Wiederholte Wiedergabe
Drücken Sie die Taste **▶▶▶** während der Wiedergabe gedrückt, um die aktuelle Datei zu springen.

1.21 Suchen
Drücken Sie die Taste **▶▶▶** während der Wiedergabe gedrückt, um die aktuelle Datei zu springen.

1.22 Wiederholte Wiedergabe
Drücken Sie die Taste **▶▶▶** während der Wiedergabe gedrückt, um die aktuelle Datei zu springen.

1.23 Suchen
Drücken Sie die Taste **▶▶▶** während der Wiedergabe gedrückt, um die aktuelle Datei zu springen.

1.24 Wiederholte Wiedergabe
Drücken Sie die Taste **▶▶▶** während der Wiedergabe gedrückt, um die aktuelle Datei zu springen.

1.25 Suchen
Drücken Sie die Taste **▶▶▶** während der Wiedergabe gedrückt, um die aktuelle Datei zu springen.

1.26 Wiederholte Wiedergabe
Drücken Sie die Taste **▶▶▶** während der Wiedergabe gedrückt, um die aktuelle Datei zu springen.

1.27 Suchen
Drücken Sie die Taste **▶▶▶** während der Wiedergabe gedrückt, um die aktuelle Datei zu springen.

1.28 Wiederholte Wiedergabe
Drücken Sie die Taste **▶▶▶** während der Wiedergabe gedrückt, um die aktuelle Datei zu springen.

1.29 Suchen
Drücken Sie die Taste **▶▶▶** während der Wiedergabe gedrückt, um die aktuelle Datei zu springen.

1.30 Wiederholte Wiedergabe
Drücken Sie die Taste **▶▶▶** während der Wiedergabe gedrückt, um die aktuelle Datei zu springen.

Free Manuals Download Website

<http://myh66.com>

<http://usermanuals.us>

<http://www.somanuals.com>

<http://www.4manuals.cc>

<http://www.manual-lib.com>

<http://www.404manual.com>

<http://www.luxmanual.com>

<http://aubethermostatmanual.com>

Golf course search by state

<http://golfingnear.com>

Email search by domain

<http://emailbydomain.com>

Auto manuals search

<http://auto.somanuals.com>

TV manuals search

<http://tv.somanuals.com>