

# Quick start guide

## English

### 1 Charge

- 1 Switch **OFF** the set.
- 2 Connect the supplied adaptor to the set and the AC outlet.
- 3 The **RED** light comes on.
- 4 The battery pack will be fully charged in approximately 4 hours. When the **RED** light goes off, it means that the battery pack is fully charged.

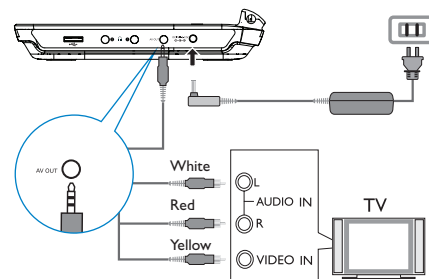
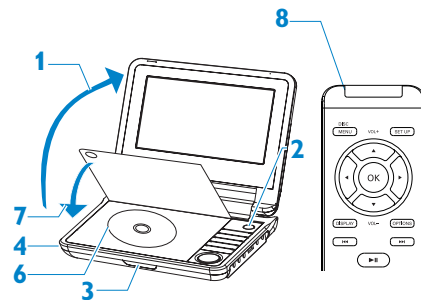
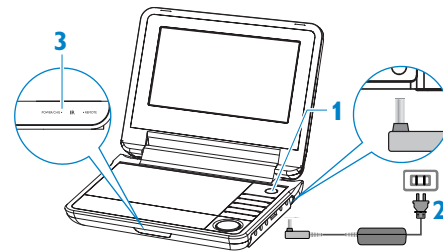
**TIP:** You can operate the DVD player while charging. However, it takes longer time to fully charge the battery.

### 2 Enjoy DVD

- 1 Open the lid.
- 2 Press and hold **POWER**.
- 3 The **GREEN** light turns on.
- 4 Open the DVD door by pushing the **OPEN**.
- 5 Remove protective card (if any).
- 6 Load the DVD disc.
- 7 Close the DVD door and the set will automatically start to play.
- 8 Use the control keys on the set or the remote control.

### 3 Connect to TV

- 1 Connect the set to the TV as shown.
- 2 Please select an appropriate input or source on the TV. You can consult the owner's manual of your TV. (If your TV does not have Audio and Video inputs, you will need to purchase a RF modulator. Please consult your dealer for more information.)



# PHILIPS

## Free Manuals Download Website

<http://myh66.com>

<http://usermanuals.us>

<http://www.somanuals.com>

<http://www.4manuals.cc>

<http://www.manual-lib.com>

<http://www.404manual.com>

<http://www.luxmanual.com>

<http://aubethermostatmanual.com>

Golf course search by state

<http://golfingnear.com>

Email search by domain

<http://emailbydomain.com>

Auto manuals search

<http://auto.somanuals.com>

TV manuals search

<http://tv.somanuals.com>