

CAB50



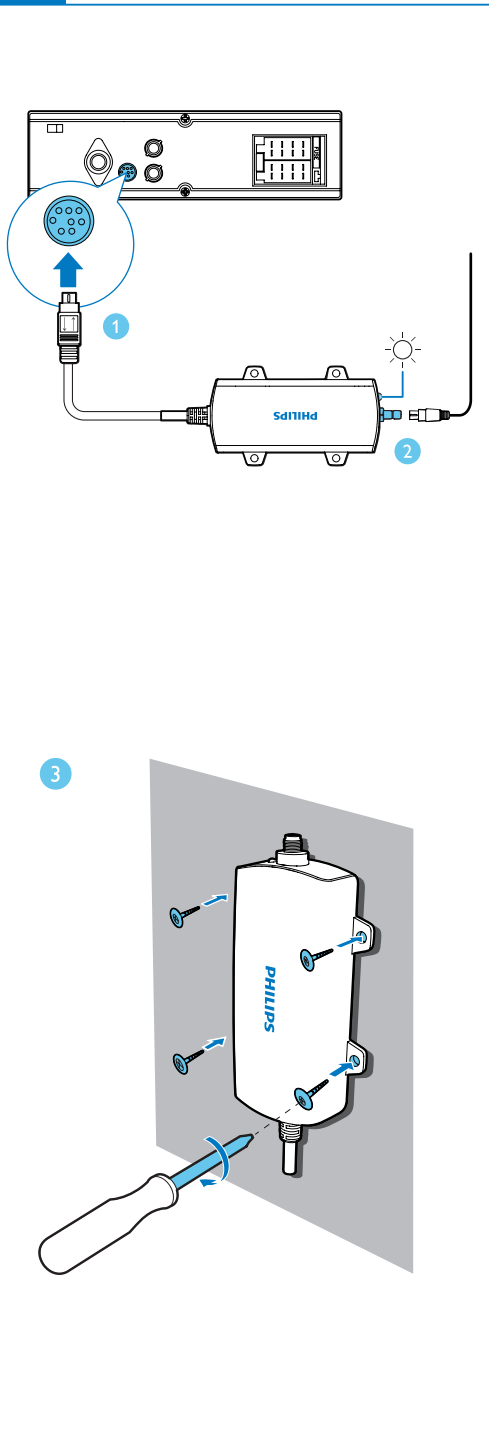
User manual

PHILIPS



All registered and unregistered trademarks are property of their respective owners.
© 2013 Koninklijke Philips Electronics N.V.
All rights reserved.

CAB50_05_UM_V1.0



Congratulations on your purchase, and welcome to Philips! To fully benefit from the support that Philips offers, register your product at www.philips.com/welcome.

1 Safety

Read and understand all instructions before you use this product. If damage is caused by failure to follow the instructions, the warranty does not apply.

- Risk of injury: Never install the receiver and its accessories on the airbag cover.
- Risk of overheating: Do not fix the DAB radio receiver to the metal surface of the main unit.
- Risk of electromagnetic interference: Do not install the DAB radio receiver over any sensors or vents.
- Risk of short circuit, malfunction, or damage to this product: Do not alter the cable of DAB radio receiver or dismantle the receiver box.
- Risk of damage to the DAB radio receiver: Never pull its cable when you remove the receiver.

2 Install the DAB radio receiver

Note

- No DAB radio antenna is bundled. Consult your local retailer to purchase it.
- Make sure that no lead other than the DAB radio antenna contacts the antenna connector of the DAB radio receiver.

- 1 Connect the DAB radio receiver to the main unit.
- 2 Connect a DAB radio antenna to the DAB radio receiver.
- 3 Secure the DAB radio receiver to your car.

3 Product information

Note

- Specifications are subject to change without prior notice.

Power supply	12 V DC (11 V - 16 V), negative ground
Frequency range	174.928 - 239.200 MHz
Usable sensitivity (EN50248)	< -95 dbm
Dimensions (W X H X D)	98 X 23 X 57 mm

4 Notice

Any changes or modifications made to this device that are not expressly approved by Philips Consumer Lifestyle may void the user's authority to operate the equipment.

Care of the environment



Your product is designed and manufactured with high quality materials and components, which can be recycled and reused.



When this crossed-out wheeled bin symbol is attached to a product it means that the product is covered by the European Directive 2002/96/EC. Please inform yourself about the local separate collection system for electrical and electronic products. Please act according to your local rules and do not dispose of your old products with your normal household waste. Correct disposal of your old product helps to prevent potential negative consequences for the environment and human health.

Environmental information

All unnecessary packaging has been omitted. We have tried to make the packaging easy to separate into three materials: cardboard (box), polystyrene foam (buffer) and polyethylene (bags, protective foam sheet.)

Your system consists of materials which can be recycled and reused if disassembled by a specialized company. Please observe the local regulations regarding the disposal of packaging materials, exhausted batteries and old equipment.

Copyright

2013 © Koninklijke Philips Electronics N.V.
Specifications are subject to change without notice. Trademarks are the property of Koninklijke Philips Electronics N.V. or their respective owners. Philips reserves the right to change products at any time without being obliged to adjust earlier supplies accordingly.

Free Manuals Download Website

<http://myh66.com>

<http://usermanuals.us>

<http://www.somanuals.com>

<http://www.4manuals.cc>

<http://www.manual-lib.com>

<http://www.404manual.com>

<http://www.luxmanual.com>

<http://aubethermostatmanual.com>

Golf course search by state

<http://golfingnear.com>

Email search by domain

<http://emailbydomain.com>

Auto manuals search

<http://auto.somanuals.com>

TV manuals search

<http://tv.somanuals.com>