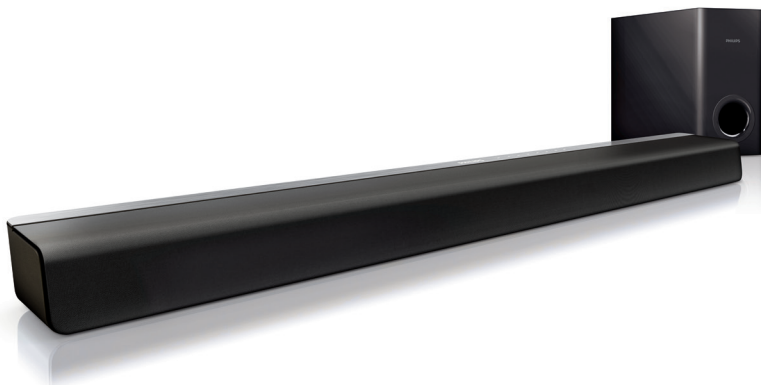


For product support, visit

www.philips.com/support

CSS2123B/F7



EN **User manual**

ES **Manual del usuario**

FR-CA **Manuel d'utilisation**

EN: For further assistance, call the customer support service in your country.

- To obtain assistance in the U.S.A., Canada, Puerto Rico, or the U.S. Virgin Islands, contact Philips Customer Care Center at 1-866-309-0846
- To obtain assistance in Mexico, contact Philips Customer Care Center at 01 800 504 6200

ES: Para obtener mas informacion, llame al servicio de soporte al cliente de su pais.

- Para obtener asistencia en los Estados Unidos, en Canada, Puerto Rico o en las Islas Virgenes de los Estados Unidos, comuniquese con Centro de atencion al cliente de Philips al 1-866-309-846
- Solo para Mexico CENTRO DE ATENCION A CLIENTES LADA, 01 800 504 62 00 Solo Para Mexico.

FR: Pour obtenir de l'aide supplementaire, communiquez avec le centre de service a la clientele de votre pays.

- Pour obtenir de l'aide aux États-Unis, au Canada, a Puerto Rico ou aux Iles Vierges americaines, communiquez avec le centre de service a la clientele Philips au : 1-866-309-0846
- Pour obtenir l'aide au Mexique, entrez en contact avec le centre de soin de client de Philips a 01 800 504 62 00

Contents

1	Help and support	2
	FAQs	2
	Contact Philips	2

2	Notice	2
	Copyright	2
	Compliance	2
	Trademarks	3

3	Important	4
	Important safety instructions	4
	Care for your product	5
	Care of the environment	5

4	Your SoundBar	6
	Main unit	6
	Remote control	6

5	Connect your SoundBar	8
	Subwoofer	8
	Connectors	8
	Connect audio from TV and other devices	9

6	Use your SoundBar	10
	Play audio from TV or other devices	10
	Adjust the volume	10
	Choose your sound	10
	MP3 player	11
	Apply factory settings	11

7	Wall mount	12
----------	-------------------	-----------

8	Product specifications	12
----------	-------------------------------	-----------

1 Help and support

FAQs

If you have a problem, refer to the frequently asked questions (FAQs) for this SoundBar at www.philips.com/support.
If you still need help, contact Philips Consumer Care in your country.



Warning

- Do not attempt to repair your SoundBar yourself. This may cause severe injury, irreparable damage to your SoundBar, or void your warranty.

Contact Philips

If you contact Philips, you will be asked for the model and serial number of your product. The model number and serial number are on the back or bottom of your product. Note the numbers before you call Philips:

Model No. _____

Serial No. _____

2 Notice

This section contains the legal and trademark notices.

Copyright



Be responsible Respect copyrights

This item incorporates copy protection technology that is protected by U.S. patents and other intellectual property rights of Rovi Corporation. Reverse engineering and disassembly are prohibited.

Compliance



Note

- This equipment has been tested and found to comply with the limits for a Class B digital device, pursuant to Part 15 of the FCC Rules. These limits are designed to provide reasonable protection against harmful interference in a residential installation. This equipment generates, uses and can radiate radio frequency energy and, if not installed and used in accordance with the instructions, may cause harmful interference to radio communications. However, there is no guarantee that interference will not occur in a particular installation.

If this equipment does cause harmful interference to radio or television reception, which can be determined by turning the equipment off and on, the user is encouraged to try to correct the interference by one or more of the following measures:

- Reorient or relocate the receiving antenna.
- Increase the separation between the equipment and receiver.
- Connect the equipment into an outlet on a circuit different from that to which the receiver is connected.
- Consult the dealer or an experienced radio/TV technician for help.

To assure continued compliance, any changes or modifications not expressly approved by the party responsible for compliance could void the user's authority to operate this equipment. (Example-use only shielded interface cables when connecting to computer or peripheral devices).

This equipment complies with Part 15 of FCC RF Rules. Operation is subject to the following two conditions:

- 1 This device may not cause interference, and
- 2 This device must accept any interference, including interference that may cause undesired operation of the device.



Caution

- The manufacturer is not responsible for any radio or TV interference caused by unauthorized modifications to this equipment. Such modifications could void the user authority to operate the equipment.

FCC Radiation Exposure Statement: This equipment complies with FCC radiation exposure limits set forth for an uncontrolled environment. This equipment should be installed and operated with a minimum distance of 20cm between the radiator and your body. This transmitter must not be co-located or operated in conjunction with any other antenna or transmitter.

WARNING: Changes or modifications made to this equipment not expressly approved by Philips may void the FCC authorization to operate this equipment.

Model number: PHILIPS CSS2123B/F7

Trade Name: Philips

Responsible Party: P&F USA, Inc. PO Box 2248
Alpharetta, GA 30023-2248; 1-866-309-0846

Notice for Canada

Class B Clause

This digital apparatus does not exceed the Class B limits for radio noise emissions from digital apparatus as set out in the Radio Interference Regulations of the Canadian Department of Communications.

This Class B digital apparatus complies with Canadian ICES-003.

Trademarks



Manufactured under license from Dolby Laboratories. Dolby and the double-D symbol are trademarks of Dolby Laboratories.

3 Important

Read and understand all instructions before you use your SoundBar. If damage is caused by failure to follow instructions, the warranty does not apply.

Important safety instructions

- Read these instructions.
- Keep these instructions.
- Heed all warnings.
- Follow all instructions.
- Do not use this apparatus near water.
- Clean only with dry cloth.
- Do not block any ventilation openings. Install in accordance with the manufacturer's instructions.
- Do not install near any heat sources such as radiators, heat registers, stoves, or other apparatus (including amplifiers) that produce heat.



- Do not defeat the safety purpose of the polarized or grounding-type plug. A polarized plug has two blades with one wider than the other. A grounding type plug has two blades and a third grounding prong. The wide blade or the third prong are provided for your safety. If the provided plug does not fit into your outlet, consult an electrician for replacement of the obsolete outlet.
- Protect the power cord from being walked on or pinched, particularly at plugs, convenience receptacles, and the point where they exit from the apparatus.
- Only use attachments/accessories specified by the manufacturer.



- Use only with the cart, stand, tripod, bracket or table specified by the manufacturer or sold with the apparatus. When a cart is used, use caution when moving the cart/apparatus combination to avoid injury from tip-over.
- Unplug this apparatus during lightning storm or when unused for long periods of time.

- Refer all servicing to qualified service personnel. Servicing is required when the apparatus has been damaged in any way, such as power-supply cord or plug is damaged, liquid has been spilled or objects have fallen into the apparatus, the apparatus has been exposed to rain or moisture, does not operate normally, or has been dropped.
- **Battery usage CAUTION** - To prevent battery leakage which may result in bodily injury, property damage, or damage to the unit:
 - Install all batteries correctly, + and - as marked on the unit.
 - Do not mix batteries (old and new or carbon and alkaline, etc.).
 - Remove batteries when the unit is not used for a long time.
- The product/remote control may contain a coin/button type battery, which can be swallowed. Keep the battery out of reach of children at all times! If swallowed, the battery can cause serious injury or death. Severe internal burns can occur within two hours of ingestion.
- If you suspect that a battery has been swallowed or placed inside any part of the body, seek immediate medical attention.
- When you change the batteries, always keep all new and used batteries out of reach of children. Ensure that the battery compartment is completely secure after you replace the battery.
- If the battery compartment cannot be completely secured, discontinue use of the product. Keep out of reach of children and contact the manufacturer.
- **Apparatus shall not be exposed to dripping or splashing.**
- **Do not place any sources of danger on the apparatus** (for example, liquid filled objects, lighted candles).
- This apparatus may contain lead and mercury. Dispose according to local, State or Federal laws. For disposal or recycling information, please contact your local authorities. For additional assistance on recycling options, please contact www.mygreenelectronics.com or www.eiae.org or www.recycle.philips.com.
- Use of controls or adjustments or performance of procedures other than herein may result in hazardous radiation exposure or other unsafe operation.
- Disconnect the mains plug to shut off when find trouble or not in use. The mains plug shall be readily operable.

- Do not place this apparatus on the furniture that is capable of being tilted by a child and an adult leaning, pulling, standing or climbing on it. A falling apparatus can cause serious injury or even death.
- This apparatus should not be placed in a built-in installation such as a bookcase or rack unless proper ventilation is provided. Make sure to leave a space of 7.8 inches (20cm) or more around this apparatus.

Class II equipment symbol



This symbol indicates that the unit has a double insulation system.



This 'bolt of lightning' indicates uninsulated material within your unit may cause an electrical shock. For the safety of everyone in your household, please do not remove product covering.



The 'exclamation point' calls attention to features for which you should read the enclosed literature closely to prevent operating and maintenance problems.

WARNING: To reduce the risk of fire or electric shock, this apparatus should not be exposed to rain or moisture and objects filled with liquids, such as vases, should not be placed on this apparatus.

CAUTION: To prevent electric shock, match wide blade of plug to wide slot, fully insert.

Care for your product

Use only microfiber cloth to clean the product.

Care of the environment



Your product is designed and manufactured with high quality materials and components, which can be recycled and reused. Please visit www.recycle.philips.com for additional information on a recycling center in your area.

Never dispose of your product with other household waste. Please inform yourself about the local rules on the separate collection of electrical and electronic products and batteries. The correct disposal of these products helps prevent potentially negative consequences on the environment and human health.

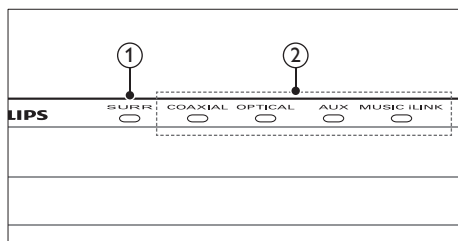
The batteries supplied do not contain the heavy metals mercury and cadmium. Nevertheless, in many areas batteries may not be disposed of with your household waste. Please ensure you dispose of batteries according to local regulations.

For perchlorate material, special handling may apply. Visit www.dtsc.ca.gov/hazardouswaste/perchlorate.

4 Your SoundBar

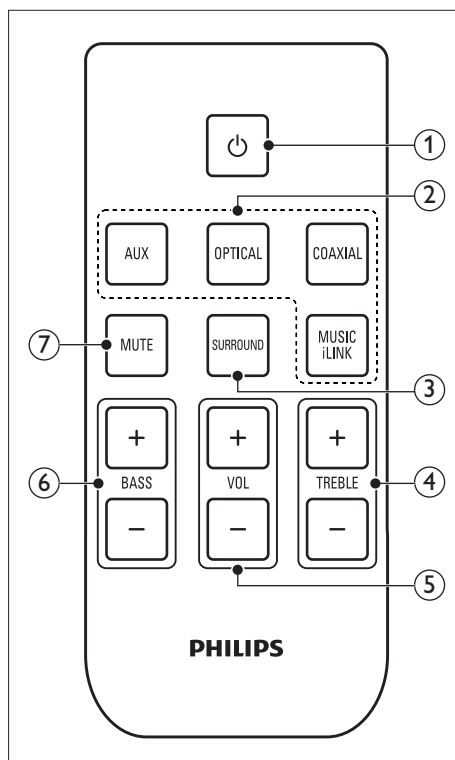
Congratulations on your purchase, and welcome to Philips! To fully benefit from the support that Philips offers, register your SoundBar at www.philips.com/welcome.

Main unit



- ① **SURR indicator**
Lights up when surround mode is turned on.
- ② **Source indicators**
 - **COAXIAL:** Lights up when you switch to coaxial input source. When Dolby signal is detected, **COAXIAL** indicator blinks for three seconds.
 - **OPTICAL:** Lights up when you switch to optical input source. When Dolby signal is detected, **OPTICAL** indicator blinks for three seconds.
 - **AUX:** Lights up when you switch to analog input source.
 - **MUSIC iLINK:** Lights up when you switch to Music iLink input source.

Remote control



- ① **⏻ (Standby-On)**
Switch the SoundBar on or to standby.
- ② **Source buttons**
 - **AUX:** Switch your audio source to the AUX connection.
 - **OPTICAL:** Switch your audio source to the optical connection.
 - **COAXIAL:** Switch your audio source to the coaxial connection.
 - **MUSIC iLINK:** Switch your audio source to the MUSIC iLINK connection.
- ③ **SURROUND**
Switch to virtual surround mode on or off.
- ④ **TREBLE +/-**
Increase or decrease treble.
- ⑤ **VOL +/-**
Increase or decrease volume.

- ⑥ **BASS +/-**
Increase or decrease bass.
- ⑦ **MUTE**
Mute or restore volume.

Replace battery



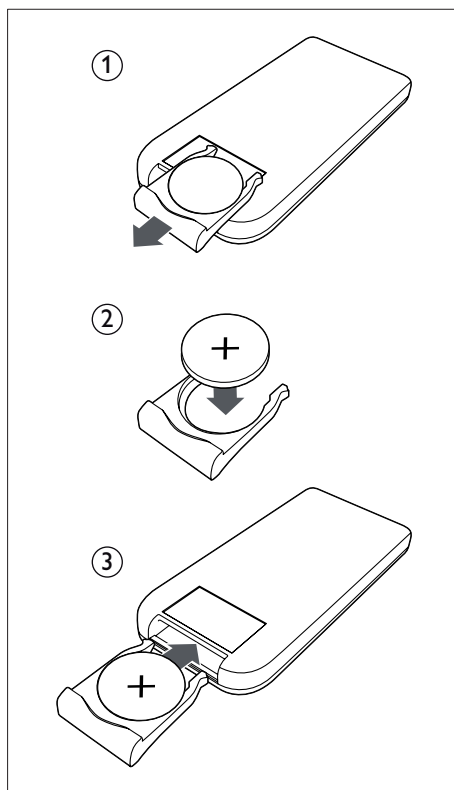
Warning

- Danger of explosion if battery is incorrectly replaced. Replace only with the same or equivalent type.
- The product/remote control may or may not contain a coin/button type battery, which can be swallowed. Keep the battery out of reach of children at all times!



Caution

- The battery contains perchlorate material, handle it with care. For information see www.dtsc.ca.gov/hazardouswaste/perchlorate.



- 1 Open the battery compartment.
- 2 Insert one CR2025 battery, with the polarity (+/-) as indicated.
- 3 Close the battery compartment.

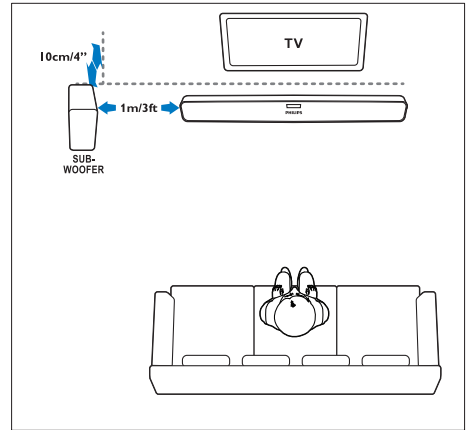
5 Connect your SoundBar

This section helps you connect your SoundBar to a TV and other devices.

For information about the basic connections of your SoundBar and accessories, see the quick start guide. For a comprehensive interactive guide, see www.connectivityguide.philips.com.

Note

- For identification and supply ratings, refer to the type plate at the back or bottom of the product.
- Before you make or change any connections, make sure that all devices are disconnected from the power outlet.



Connect

Connect your subwoofer to your SoundBar as described in the quick start guide.

Subwoofer

Follow the steps below to position and connect your subwoofer:

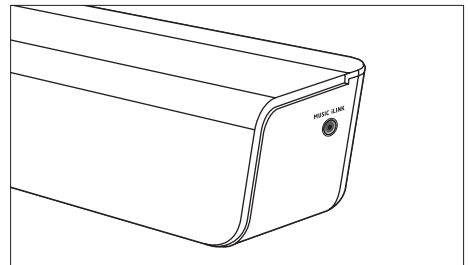
Position

Place the subwoofer at least one meter (three feet) away from either to the left or right of your SoundBar, and ten centimeter away from the wall. For best results, place your subwoofer as shown below.

Connectors

Connect other devices to your SoundBar:

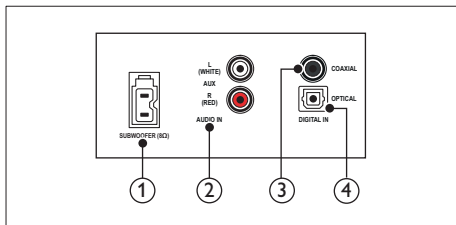
Side right



MUSIC iLINK

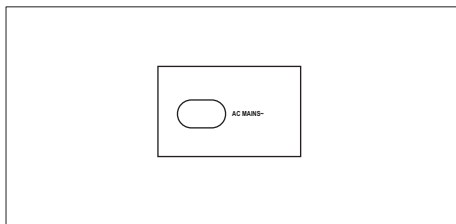
Audio input from an MP3 player.

Rear left



- ① **SUBWOOFER**
Connect to the supplied subwoofer.
- ② **AUDIO IN-AUX**
Connect to an analog audio output on the TV or an analog device.
- ③ **DIGITAL IN-COAXIAL**
Connect to a coaxial audio output on the TV or a digital device.
- ④ **DIGITAL IN-OPTICAL**
Connect to an optical audio output on the TV or a digital device.

Rear right



AC MAINS~

Connect to the power supply.

Connect audio from TV and other devices

Play audio from TV or other devices through your SoundBar. Use the best quality connection available on other devices.

Note

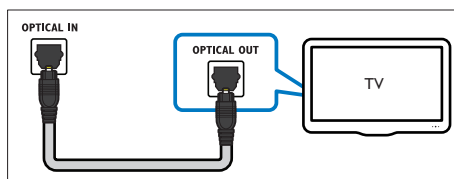
- The audio connections in this user manual are only recommendations. You can use other connections too.
- If you play audio from the TV through your SoundBar, make sure that the TV is muted.

Option 1: Connect audio through a digital optical cable

Best quality audio

Using an optical cable, connect the **OPTICAL** connector on your SoundBar to the **OPTICAL OUT** connector on the device.

The digital optical connector might be labeled **SPDIF**, **SPDIF OUT**, or **OPTICAL**.

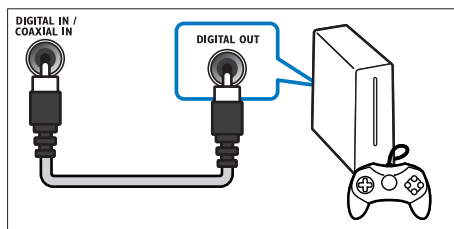


Option 2: Connect audio through a digital coaxial cable

Good quality audio

Using a coaxial cable, connect the **COAXIAL** connector on your SoundBar to the **COAXIAL/ DIGITAL OUT** connector on the device.

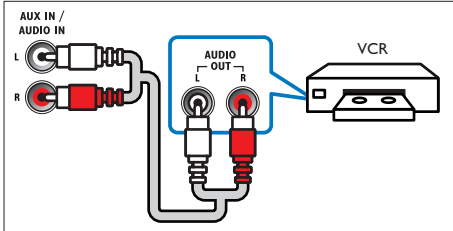
The digital coaxial connector might be labeled **DIGITAL AUDIO OUT**.



Option 3: Connect audio through analog audio cables

Basic quality audio

Using an analog cable, connect the **AUX** connectors on your SoundBar to the audio connectors on the device.



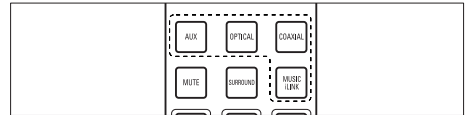
6 Use your SoundBar

This section helps you use the SoundBar to play audio from connected devices.

Before you start

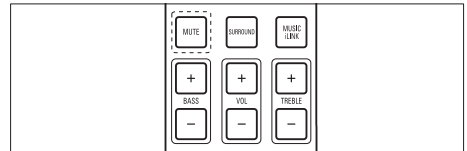
- Make the necessary connections described in the quick start guide and the user manual.
- Switch the SoundBar to the correct source for other devices.

Play audio from TV or other devices



Press the **Source buttons** to select the audio output of the connected device.

Adjust the volume



To increase or decrease volume, press **VOL +/-**.

- The **Source indicators** on the front panel blink thrice when the volume is set to either minimum or maximum.

To mute sound, press **MUTE**.

- The current **Source indicator** on the front panel blinks continuously.

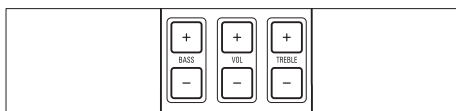
To restore the sound, press **MUTE** again or press **VOL +/-**.

Choose your sound

This section helps you choose the ideal sound for your video or music.

Change treble or bass

Change the high frequency (treble) or low frequency (bass) settings of the SoundBar to suit your video or music.



Press **TREBLE +/-** or **BASS +/-** to increase or decrease treble or bass.

- The **Source indicators** on the front panel blink thrice when the treble or bass is set to either minimum or maximum.

Surround sound mode

Experience an immersive audio experience with surround sound modes.



Press **SURROUND** repeatedly to switch surround mode on or off.

- ↳ When surround mode is on, the **SURR** on the front panel lights up.

Night mode

For quiet listening, decrease the volume of loud sounds when you play discs. Night mode is only available for Dolby encoded TV programs, DVD, and Blu-ray discs.



Press and hold **SURROUND** to switch night mode on or off.

- ↳ When the night mode is on, **AUX** indicator on the front panel blinks twice.

MP3 player

Connect your MP3 player to play your audio files or music.

What you need

- An MP3 player.
- A 3.5mm stereo audio cable.

Play music

- 1 Connect the MP3 player to the SoundBar as described in the Quick start guide.
- 2 Press **MUSIC iLINK**.
↳ **MUSIC iLINK** indicator on the front panel lights up.
- 3 Press the buttons on the MP3 player to select and play audio files or music.

Apply factory settings

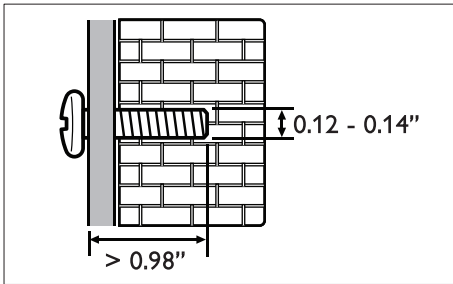
You can reset your SoundBar to the default settings programmed at the factory. Within three seconds, press **BASS+**, **VOL-**, and **TREBLE+**.

- ↳ When the restore factory settings process is complete, the SoundBar automatically switches off and turns back on again.

7 Wall mount

Before you mount your SoundBar on the wall, read all the safety precautions (see 'Important' on page 4).

Make sure that you use the screws and brackets specified by the manufacturer or sold with the apparatus. Secure the wall mount to a wall that can support the combined weight of the product and the wall mount. For information about the size of the keyhole on your SoundBar's mount, see the Quick Start Guide.



Note

- Koninklijke Philips Electronics N.V. bears no responsibility for improper wall mounting that results in accident, injury or damage. If you have any query, contact Philips Consumer Care in your country.

8 Product specifications

Note

- Specifications and design are subject to change without notice.

Amplifier

- Total output power: 60W RMS (30% THD)
- Frequency response: 20 Hz-20 kHz / ± 3 dB
- Signal-to-noise ratio: > 65 dB (CCIR) / (A-weighted)
- Input sensitivity:
 - AUX: 600 mV
 - Music iLink: 250 mV

Audio

- S/PDIF Digital audio input:
 - Coaxial: IEC 60958-3
 - Optical: TOSLINK

Main unit

- Power supply: 110-240 V~, 50-60 Hz
- Power consumption: 20 W
- Standby power consumption: ≤ 0.5 W
- Speaker impedance: 4 ohm woofer; 4 ohm tweeter
- Speaker drivers: 25 x 120 mm (1 x 5") woofer; 38 mm (1.5") tweeter
- Frequency response: 150 Hz-20 kHz
- Dimensions (WxHxD): 708 x 47 x 65 mm
- Weight: 1.03 kg

Subwoofer

- Impedance: 8 ohm
- Speaker drivers: 130 mm (5.25") woofer
- Frequency response: 20 Hz-150 Hz
- Dimensions (WxHxD): 165 x 240 x 295 mm
- Weight: 2.6 kg
- Cable length: 3 m

Remote control batteries

- 1 x CR2025

9 Troubleshooting



Warning

- Risk of electric shock. Never remove the casing of the product.

To keep the warranty valid, never try to repair the product yourself.

If you have problems using this product, check the following points before you request service. If you still have a problem, get support at www.philips.com/support.

Sound

No sound from SoundBar speakers.

- Connect the correct audio cable from your SoundBar to your TV or other devices.
- On your SoundBar remote control, press the **Source buttons** to select the correct audio input.
- Make sure that the SoundBar is not muted. Press VOL +/- to restore the sound (see 'Adjust the volume' on page 10).

Distorted sound or echo.

- If you play audio from the TV through the SoundBar, make sure that the TV is muted.

ONE (1) YEAR LIMITED WARRANTY

WARRANTY COVERAGE:

This warranty obligation is limited to the terms set forth below.

WHO IS COVERED:

This product is warranted to the original purchaser or the person receiving the product as a gift against defects in materials and workmanship as based on the date of original purchase ("Warranty Period") from an Authorized Dealer. The original sales receipt showing the product name and the purchase date from an authorized retailer is considered such proof.

WHAT IS COVERED:

This warranty covers new products if a defect in material or workmanship occurs and a valid claim is received within the Warranty Period. At its option, the company will either (1) repair the product at no charge, using new or refurbished replacement parts, or (2) exchange the product with a product that is new or which has been manufactured from new, or serviceable used parts and is at least functionally equivalent or most comparable to the original product in current inventory, or (3) refund the original purchase price of the product. The company warrants replacement products or parts provided under this warranty against defects in materials and workmanship from the date of the replacement or repair for ninety (90) days or for the remaining portion of the original product's warranty, whichever provides longer coverage for you. When a product or part is exchanged, any replacement item becomes your property and the replaced item becomes the company property. When a refund is given, your product becomes the company property.

Note: Any product sold and identified as refurbished or renewed carries a ninety (90) day limited warranty.

Replacement product can only be sent if all warranty requirements are met. Failure to follow all requirements can result in delay.

WHAT IS NOT COVERED - EXCLUSIONS AND LIMITATIONS:

This Limited Warranty applies only to the new products that can be identified by the trademark, trade name, or logo affixed to it. This Limited Warranty does not apply to any non-Philips hardware product or any software, even if packaged or sold with the product. Non-Philips manufacturers, suppliers, or publishers may provide a separate warranty for their own products packaged with the bundled product.

The company is not liable for any damage to or loss of any programs data, or other information stored on any media contained within the product, or any non-Philips product or part not covered by this warranty. Recovery or reinstallation of programs, data or other information is not covered under this Limited Warranty.

This warranty does not apply (a) to damage caused by accident, abuse, misuse, neglect, misapplication, or non-Philips product, (b) to damage caused by service performed by anyone other than an Authorized Service Location, (c) to a product or a part that has been modified without written permission,

or (d) if any serial number has been removed or defaced, or (e) product, accessories or consumables sold "AS IS" without warranty of any kind by including refurbished Philips product sold "AS IS" by some retailers.

This Limited Warranty does not cover:

- Shipping charges to return defective product.
- Labor charges for installation or setup of the product, adjustment of customer controls on the product, and installation or repair of antenna/signal source systems outside of the product.
- Product repair and/or part replacement because of improper installation or maintenance, connections to improper voltage supply, power line surge, lightning damage, retained images or screen markings resulting from viewing fixed stationary content for extended periods, product cosmetic appearance items due to normal wear and tear, unauthorized repair or other cause not within the control of the company.
- Damage or claims for products not being available for use, or for lost data or lost software.
- Damage from mishandled shipments or transit accidents when returning product.
- A product that requires modification or adaptation to enable it to operate in any country other than the country for which it was designed, manufactured, approved and/or authorized, or repair of products damaged by these modifications.
- A product used for commercial or institutional purposes (including but not limited to rental purposes).
- Product lost in shipment and no signature verification receipt can be provided.
- Failure to operate per Owner's Manual.

TO OBTAIN ASSISTANCE IN THE U.S.A., CANADA, PUERTO RICO, OR U.S. VIRGIN ISLANDS...

Contact Customer Care Center at:

1-866-309-0846

REPAIR OR REPLACEMENT AS PROVIDED UNDER THIS WARRANTY IS THE EXCLUSIVE REMEDY FOR THE CONSUMER. PHILIPS SHALL NOT BE LIABLE FOR ANY INCIDENTAL OR CONSEQUENTIAL DAMAGES FOR BREACH OF ANY EXPRESS OR IMPLIED WARRANTY ON THIS PRODUCT. EXCEPT TO THE EXTENT PROHIBITED BY APPLICABLE LAW, ANY IMPLIED WARRANTY OF MERCHANTABILITY OR FITNESS FOR A PARTICULAR PURPOSE ON THIS PRODUCT IS LIMITED IN DURATION TO THE DURATION OF THIS WARRANTY.

Some states do not allow the exclusions or limitation of incidental or consequential damages, or allow limitations on how long an implied warranty lasts, so the above limitations or exclusions may not apply to you.

This warranty gives you specific legal rights. You may have other rights which vary from state/province to state/province.

P&F USA Inc. PO Box 2248 Alpharetta, GA 30023-2248

P&F USA, Inc.
PO Box 2248 Alpharetta, GA 30023-2248



© 2012 Koninklijke Philips Electronics N.V.
All rights reserved.
sgpam_1150/F7_v1

Free Manuals Download Website

<http://myh66.com>

<http://usermanuals.us>

<http://www.somanuals.com>

<http://www.4manuals.cc>

<http://www.manual-lib.com>

<http://www.404manual.com>

<http://www.luxmanual.com>

<http://aubethermostatmanual.com>

Golf course search by state

<http://golfingnear.com>

Email search by domain

<http://emailbydomain.com>

Auto manuals search

<http://auto.somanuals.com>

TV manuals search

<http://tv.somanuals.com>