

User Manual	6
Manuel D'utilisation	50
Manual de Instrucciones	94
Bedienungsanleitung	138
Gerbruiksaanwijzing	182

Thank you for choosing Philips.

Need help fast?

Read your Quick Use/Start Guide and/or User Manual first for quick tips that make using your Philips product more enjoyable.

*If you have read your instructions and still need assistance, you may access our online help at **www.philips.com/support***



PHILIPS

Important notes for users in the U.K.

Mains plug

This apparatus is fitted with an approved 13 Amp plug. To change a fuse in this type of plug proceed as follows:

- 1 Remove fuse cover and fuse.
- 2 Fix new fuse which should be a BS1362 5 Amp, A.S.T.A. or BSI approved type.
- 3 Refit the fuse cover.

If the fitted plug is not suitable for your socket outlets, it should be cut off and an appropriate plug fitted in its place.

If the mains plug contains a fuse, this should have a value of 5 Amp. If a plug without a fuse is used, the fuse at the distribution board should not be greater than 5 Amp.

Note: The severed plug must be disposed of to avoid a possible shock hazard should it be inserted into a 13 Amp socket elsewhere.

How to connect a plug

The wires in the mains lead are coloured with the following code: blue = neutral (N), brown = live (L).

- As these colours may not correspond with the colour markings identifying the terminals in your plug, proceed as follows:
 - Connect the blue wire to the terminal marked N or coloured black.
 - Connect the brown wire to the terminal marked L or coloured red.
 - Do not connect either wire to the earth terminal in the plug, marked E (or \perp) or coloured green (or green and yellow).

Before replacing the plug cover, make certain that the cord grip is clamped over the sheath of the lead - not simply over the two wires.

Copyright in the U.K.

Recording and playback of material may require consent. See Copyright Act 1956 and The Performer's Protection Acts 1958 to 1972.

Italia

DICHIARAZIONE DI CONFORMITA'

Si dichiara che l'apparecchio HTS8000S, Philips risponde alle prescrizioni dell'art. 2 comma 1 del D.M. 28 Agosto 1995 n. 548.

Fatto a Eindhoven

Philips Consumer Electronics
Philips, Glaslaan 2
5616 JB Eindhoven, The Netherlands

Norge

Typeskilt finnes på apparatens underside.

Observer: Nettbryteren er sekundert innkoplet. Den innebygde nettdelen er derfor ikke frakoplet nettet så lenge apparatet er tilsluttet nettkontakten.

For å redusere faren for brann eller elektrisk støt, skal apparatet ikke utsettes for regn eller fuktighet.

CAUTION

Use of controls or adjustments or performance of procedures other than herein may result in hazardous radiation exposure or other unsafe operation.

VAROITUS

Muiden kuin tässä esitettyjen toimintojen säädön tai asetusten muutto saattaa altistaa vaaralliselle säteilylle tai muille vaarallisille toiminnoille.

DK

Advarsel: Usynlig laserstråling ved åbning når sikkerhedsafbrydere er ude af funktion. Undgå udsættelse for stråling.

Bemærk: Netafbryderen er sekundært indkoblet og afbryder ikke strømmen fra nettet. Den indbyggede netdel er derfor tilsluttet til lysnettet så længe netstikket sidder i stikkontakten.

S

Klass 1 laserapparat

Varning! Om apparaten används på annat sätt än i denna bruksanvisning specificerats, kan användaren utsättas för osynlig laserstråling, som överskrider gränsen för laserklass 1.

Observera! Stömbrytaren är sekundärt kopplad och bryter inte strömmen från nätet. Den inbyggda nätdelen är därför ansluten till elnätet så länge stickproppen sitter i vägguttaget.

SF

Luokan 1 laserlaite

Varoitus! Laitteen käyttäminen muulla kuin tässä käyttöohjeessa mainitulla tavalla saattaa altistaa käyttäjän turvallisuusluokan 1 ylittävälle näkymättömälle lasersäteilylle. Oikeus muutoksiin varataan. Laite ei saa olla alttiina tippu- ja roiskevedelle.

Huom. Toiminnanvalitsin on kytketty toisiopuolelle, eikä se kytke laitetta irti sähköverkosta. Sisäänrakennettu verkko-osa on kytkettynä sähköverkkoon aina silloin, kun pistoke on pistorasiassa.

English 6

Français 50

Español 94

Deutsch 138

Nederlands 182



English

Français

Español

Deutsch

Nederlands

LASER

Type	Semiconductor laser GaAlAs
Wave length	650~660 nm (DVD) 784~796 nm (CD)
Output Power	7 mW (DVD) 10 mW (VCD/CD)
Beam divergence	60 degree

This product complies with the radio interference requirements of the European Community.

Manufactured under license from Dolby Laboratories. "Dolby", "Pro Logic" and the double-D symbol are trademarks of Dolby Laboratories.

Manufactured under license from Digital Theater Systems, Inc. U.S. Pat. Nois. 5,451,942; 5,956,674; 5,974,380; 5,978,762; 6,226,616; 6,487,535 and other U.S. and world-wide patents issued and pending. "DTS" and "DTS Digital Surround" are registered trademarks of Digital Theater Systems, Inc. Copyright 1996, 2003 Digital Inc. All Rights Reserved.

DivX®, DivX Certified, and associated logos are trademarks of DivX Networks, Inc and are used under license.



CAUTION

VISIBLE AND INVISIBLE LASER RADIATION WHEN OPEN AVOID EXPOSURE TO BEAM
ADVARSEL
SYNLIG OG USYNLIG LASERSTRÅLING VED ÅBNING
UNDGÅ UDSÆTTELSE FOR STRÅLING
VARNING

SYNLIG OCH OSYNLIG LASERSTRÅLNING NÄR DENNA DEL ÄR ÖPPNAD BETRAKTA EJ STRÅLEN
VARO!

AVATTAESSA OLET ALTTIINA NÄKYVÄLLE JA NÄKYMÄTTÖMÄLLE LASER SÄTEILYLLE. ÄLÄ KATSO SÄTEESEEN

VORSICHT

SICHTBARE UND UNSICHTBARE LASERSTRAHLUNG WENN ABDECKUNG GEÖFFNET NICHT DEM STRAHL AUSSETSEN

ATTENTION

RAYONNEMENT LASER VISIBLE ET INVISIBLE EN CAS D'OUVERTURE EXPOSITION DANGEREUSE AU FAISCEAU



This DVD Home Theatre System is in conformity with the EMC directive and low-voltage directive.

ATTENTION!

For Customer Use:

Read carefully the information located at the bottom of your main DVD system and enter below the Serial No. Retain this information for future reference.

Model No. HTS8000S

Serial No. _____

'CONSUMERS SHOULD NOTE THAT NOT ALL HIGH DEFINITION TELEVISION SETS ARE FULLY COMPATIBLE WITH THIS PRODUCT AND MAY CAUSE ARTIFACTS TO BE DISPLAYED IN THE PICTURE. IN CASE OF 525 OR 625 PROGRESSIVE SCAN PICTURE PROBLEMS, IT IS RECOMMENDED THAT THE USER SWITCH THE CONNECTION TO THE 'STANDARD DEFINITION' OUTPUT. IF THERE ARE QUESTIONS REGARDING OUR TV SET COMPATIBILITY WITH THIS MODEL 525p AND 625p DVD PLAYER, PLEASE CONTACT OUR CUSTOMER SERVICE CENTRE'.

Language Code

Abkhazian	6566	Inupiaq	7375	Pushto	8083
Afar	6565	Irish	7165	Russian	8285
Afrikaans	6570	Íslenska	7383	Quechua	8185
Amharic	6577	Italiano	7384	Raeto-Romance	8277
Arabic	6582	Ivrit	7269	Romanian	8279
Armenian	7289	Japanese	7465	Rundi	8278
Assamese	6583	Javanese	7486	Samoan	8377
Avestan	6569	Kalaallisut	7576	Sango	8371
Aymara	6589	Kannada	7578	Sanskrit	8365
Azerhijani	6590	Kashmiri	7583	Sardinian	8367
Bahasa Melayu	7783	Kazakh	7575	Serbian	8382
Bashkir	6665	Kernewek	7587	Shona	8378
Belarusian	6669	Khmer	7577	Shqip	8381
Bengali	6678	Kinyarwanda	8287	Sindhi	8368
Bihari	6672	Kirghiz	7589	Sinhalese	8373
Bislama	6673	Komi	7586	Slovensky	8373
Bokmål, Norwegian	7866	Korean	7579	Slovenian	8376
Bosanski	6683	Kuanyama; Kwanyama	7574	Somali	8379
Brezhoneg	6682	Kurdish	7585	Sotho; Southern	8384
Bulgarian	6671	Lao	7679	South Ndebele	7882
Burmese	7789	Latina	7665	Sundanese	8385
Castellano, Español	6983	Latvian	7686	Swedish	7073
Catalán	6765	Letzeburgesch;	7666	Swahili	8387
Chamorro	6772	Limburgan; Limburger	7673	Swati	8383
Chechen	6769	Lingala	7678	Svenska	8386
Chewa; Chichewa; Nyanja	7889	Lithuanian	7684	Tagalog	8476
中文	9072	Luxembourgish;	7666	Tahitian	8489
Chuang; Zhuang	9065	Macedonian	7775	Tajik	8471
Church Slavik; Slavonic	6785	Malagasy	7771	Tamil	8465
Chuvash	6786	Magyar	7285	Tatar	8484
Corsican	6779	Malayalam	7776	Telugu	8469
Česky	6783	Maltese	7784	Thai	8472
Dansk	6865	Manx	7186	Tibetan	6679
Deutsch	6869	Maori	7773	Tigrinya	8473
Dzongkha	6890	Marathi	7782	Tonga (Tonga Islands)	8479
English	6978	Marshallese	7772	Tsonga	8483
Esperanto	6979	Moldavian	7779	Tswana	8478
Estonian	6984	Mongolian	7778	Türkçe	8482
Euskara	6985	Nauru	7865	Türkmen	8475
Ελληνικά	6976	Navaho; Navajo	7886	Twi	8487
Faroese	7079	Ndebele, North	7868	Uighur	8571
Français	7082	Ndebele, South	7882	Ukrainian	8575
Frysk	7089	Ndonga	7871	Urdu	8582
Fijian	7074	Nederlands	7876	Uzbek	8590
Gaelic; Scottish Gaelic	7168	Nepali	7869	Vietnamese	8673
Galleghan	7176	Norsk	7879	Volapuk	8679
Georgian	7565	Northern Sami	8369	Walloon	8765
Gikuyu; Kikuyu	7573	North Ndebele	7868	Welsh	6789
Guarani	7178	Norwegian Nynorsk;	7878	Wolof	8779
Gujarati	7185	Occitan; Provençal	7967	Xhosa	8872
Hausa	7265	Old Bulgarian; Old Slavonic	6785	Yiddish	8973
Herero	7290	Oriya	7982	Yoruba	8979
Hindi	7273	Oromo	7977	Zulu	9085
Hiri Motu	7279	Ossetian; Ossetic	7983		
Hrvatski	6779	Pali	8073		
Ido	7379	Panjabi	8065		
Interlingua (International)	7365	Persian	7065		
Interlingue	7365	Polski	8076		
Inuktitut	7385	Português	8084		

Contents

Language Code 5

General Information

Setup 8
Supplied accessories 8
Cleaning discs 8

System Placement

Positioning for best effect 9
 Placing the SonoWave speakers 9
 Placing the AV subwoofer 10
 Placing the main DVD system 10
 Placing the junction box 10

Overall Connection Overview

 11

Optional Setup

Mounting the main DVD system on the wall 12
Mounting the SonoWave speakers system on the wall 13

Optional Connections

Connecting to a Progressive Scan TV ... 14
Connecting to outdoor FM antenna terminal 14
Connecting to an analogue audio/video device 15
Connecting to a digital audio device 15

Remote Control

 16–17

Main Unit

 18

Getting Started

Step 1: Preparing the remote control ... 19
 Using the remote control to operate the system 19
Step 2: Switching on the DVD system.. 19
 Switching to Eco Power standby mode 19
Step 3: Setting the TV 20
 Setting up Progressive Scan feature (for Progressive Scan TV only) 20-21
 Selecting the matching colour system 22
 Setting the TV Display 22
Step 4: Setting language preferences 23
 On-Screen Display (OSD) language. 23
 Audio, Subtitle and Disc menu languages 23

Disc Operations

Playable discs 24
Playing a disc 25
 Auto Eco Power standby mode 25
Basic playback controls 25
Selecting various repeat/shuffle functions 26
Other operations for video playback (DVD/VCD/SVCD) 26
 Using the Disc Menu 26
 Viewing playback information 27
 Resuming playback from the last stopped point 27
 Zooming in 27
 Changing sound track language 28
 Changing subtitle language (DVD only) 28
 Preview Function (VCD only) 28
Playing MP3/JPEG/MPEG-4 disc 29
 Playing MP3 music and JPEG picture simultaneously 29
Playing a picture disc (slide show) 30
 Preview Function 30
 Zoom picture 30
 Rotating/Flipping the picture 30
 Supported JPEG picture formats 30
Playing a Super Audio CD (SACD) 31
Playing a DivX disc 31

DVD Setup Menu Options

Accessing General Setup Page	32
Locking/Unlocking the disc for viewing	32
Programming disc tracks (not for Picture CD/MP3/SACD)	32–33
OSD language	33
Screen Saver – turning on/off	33
DivX(R) VOD registration code	33
Accessing Audio Setup Page	34
Setting the analogue output	34
Night mode – turning on/off	34
CD Upsampling	34
Accessing Video Setup Page	35
TV Type	35
TV Display	35
Progressive function-turning on/off ..	35
Picture Setting	36
Setting the Video Output	36
Accessing Preference Setup Page	37
Audio, Subtitle, Disc Menu	37
Restricting playback by Parental Control	37–38
PBC (Playback Control)	38
MP3/JPEG menu– turning on/off	38
Changing the Password	39
Setting the DivX Subtitle font	39
Restoring to original settings	39

Tuner Operations

Tuning to radio stations	40
Presetting radio stations	40
Using the Plug and Play	40
Automatic presetting	41
Manual presetting	41
Selecting a preset radio station	41
Deleting a preset radio station	41

Sound and Volume Controls

Speakers (SonoWave) adjustment	42
AV subwoofer adjustment	43
Selecting surround sound	43
Selecting digital sound effects	43
Volume control	43

Other Functions

Setting the Sleep timer	44
Dimming system's display screen	44
Using the remote to operate your 'Philips' television	44

Specifications

Troubleshooting

Glossary

General Information

CAUTION!

The machine does not contain any user-serviceable parts. Please leave all maintenance work to qualified personnel.

Setup

Finding a suitable location

- Place the set on a flat, hard and stable surface. Do not place the set on a carpet.
- Do not position the set on top of other equipment that might heat it up (e.g., receiver or amplifier).
- Do not put anything under the set (e.g., CDs, magazines).

Space for ventilation

- Place the apparatus in a location with adequate ventilation to prevent internal heat build up. Allow at least 10 cm (4.5") clearance from the rear and the top of the set and 5cm (2.3") from the left and right to prevent overheating.

Avoid high temperatures, moisture, water and dust

- Apparatus shall not be exposed to dripping or splashing.
- Do not place any sources of danger on the apparatus (e.g., liquid filled objects, lighted candles).

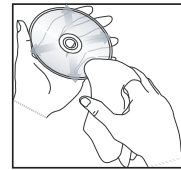
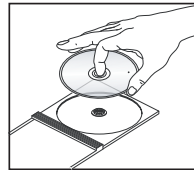
Accessories supplied

- 1 Junction Box with velcro strip pad
- 1 AV subwoofer with 4 rubber feet
- 2 SonoWave speakers with 2 sets of wall mounting brackets, screws and wall plugs
- 1 set of wall mounting bracket, screws and wall plugs for main DVD system
- 1 remote control with battery inserted
- 1 VGA cable (for connecting between the AV subwoofer and Junction Box).
- 1 AC power cable for the AV subwoofer
- Quick Use Guide

Cleaning discs

Some problems occur because the disc inside the player is dirty (frozen picture, sound disruptions, picture distortions). To avoid these problems, discs should be cleaned on a regular basis.

To clean a disc, use a micro fibre cleaning cloth and wipe the disc from the center to the edge in a straight line.



CAUTION!

Do not use solvents such as benzene, thinner, commercially available cleaners, or anti-static sprays intended for discs.

Since the optical unit (laser) of the DVD system operates at a higher power than regular DVD or CD players, cleaning CDs intended for DVD or CD players may damage the optical unit (laser). Therefore, refrain from using a cleaning CD.

System Placement

Positioning for best effect

The Philips HTS8000S Home Theatre System, with its proprietary 2-speaker SonoWave system, is simple to install compared to other regular home theatre systems. However, proper system placement is critical to ensure the most immersive sound experience.

The placement diagrams shown here are only guidelines that provide great system performance, you may find other placement choices that are more suitable for your room layout and provide the sound you enjoy.

Figure (A) : Example of placement on the flat surface

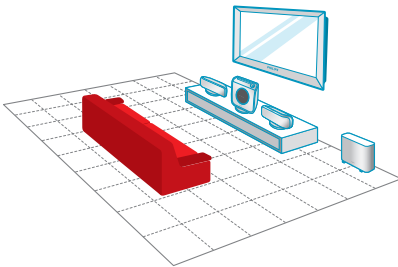
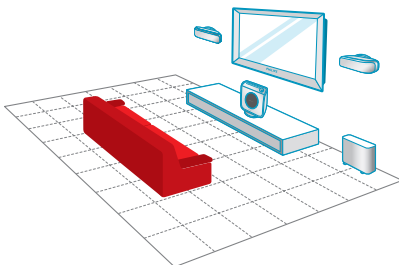


Figure (B) : Example of wall mounting placement



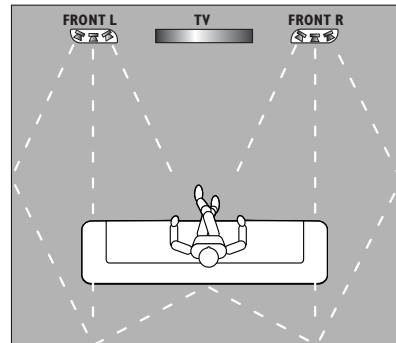
Helpful Hints:

- To avoid magnetic interference, do not position the SonoWave speakers too close to your TV.
- Allow adequate ventilation around the AV subwoofer and DVD system.

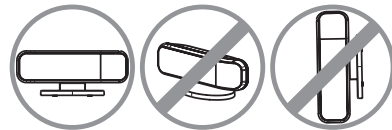
Placing the SonoWave speakers

When placing the SonoWave speakers, ensure that:

- It should be placed at the same height and at the normal listening ear level for the best sound performance.
- It should be placed at equal distance from the TV, the FRONT R at the right hand side and FRONT L at the left hand side (as shown below).



- It should be faced straight ahead towards the listening area. Do not place at an angle as it would reduce the system performance.



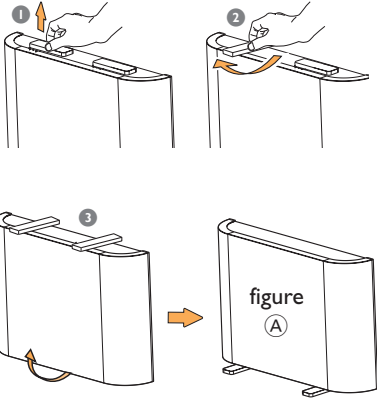
For SonoWave speakers setting, see page 42.

System Placement (continued)

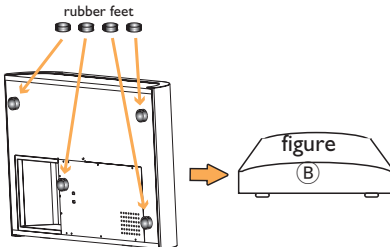
Placing the AV subwoofer

For optimum performance, place the AV subwoofer at the corner of the room, kept at least one metre away from the TV. You can choose to place the AV subwoofer upright (see figure (A)) or lay it flat under the table or shelf (see figure (B)).

- To place the AV subwoofer upright, slightly pull up the feet and rotate clockwise to increase stability.



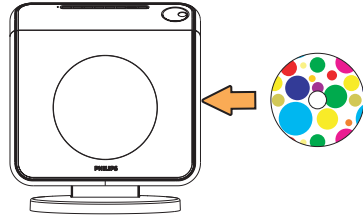
- To lay the AV subwoofer flat (horizontally) on the floor, attach the supplied rubber feet on the bottom surface to allow sufficient ventilation and prevent scratches.



To adjust the volume level of AV subwoofer, see page 43.

Placing the main DVD system

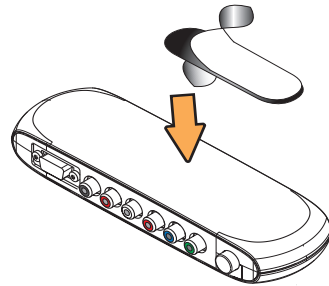
Ensure ample space at the right hand side for ease of disc handling.



Placing the Junction Box

You may place it behind the TV/shelf/table to hide away the cable connection.

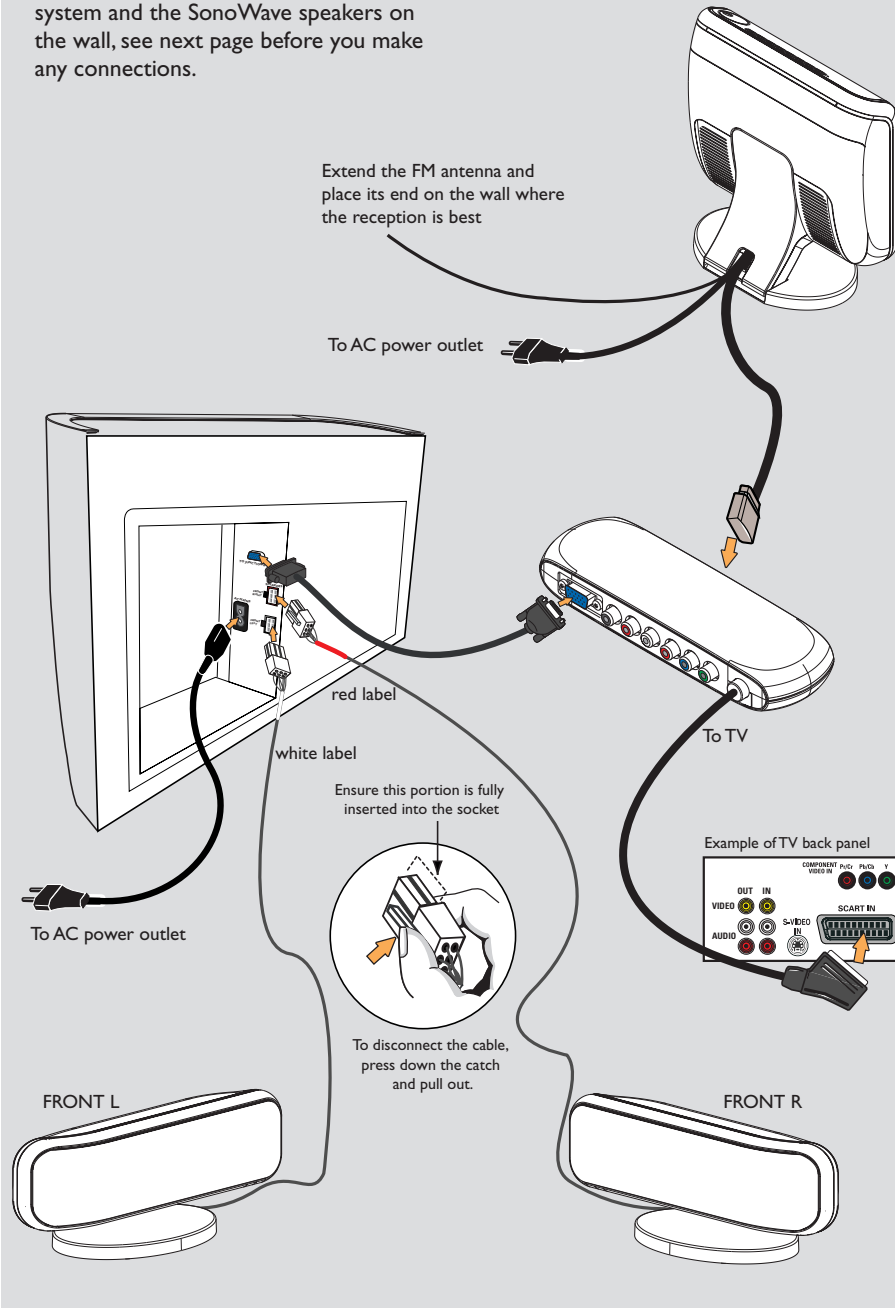
For fixing purpose, attach one side of the supplied velcro strip on the junction box and another at the place you wish to fix the junction box.



Overall Connection Overview

IMPORTANT!

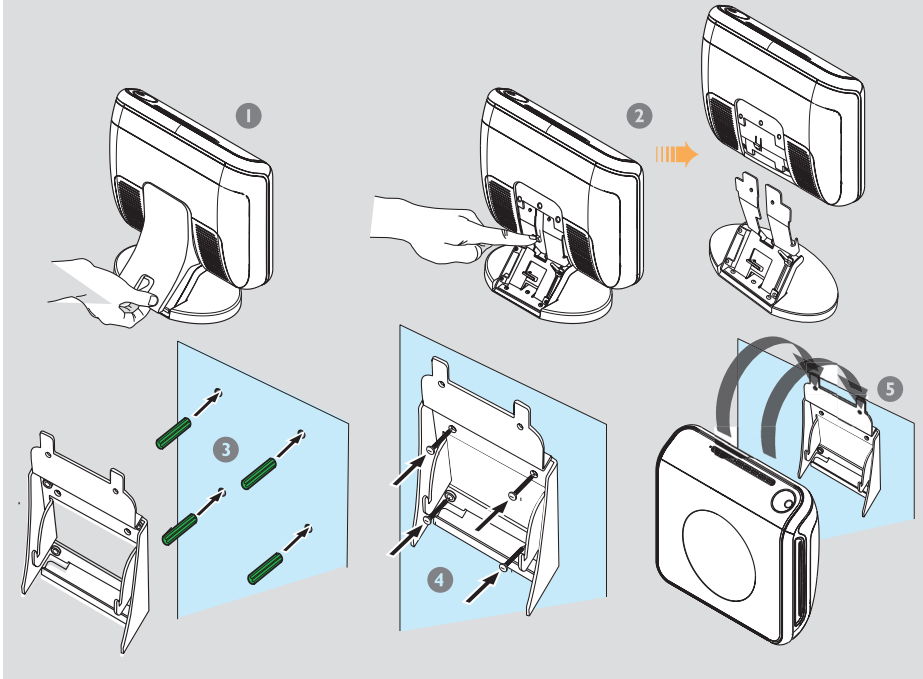
If you wish to mount the main DVD system and the SonoWave speakers on the wall, see next page before you make any connections.



Optional Setup

English

Mounting the main DVD system on the wall



You can choose to wall mount the main DVD system on the wall. Select a position where nothing obstructs the disc slot on its right hand side.

CAUTION!

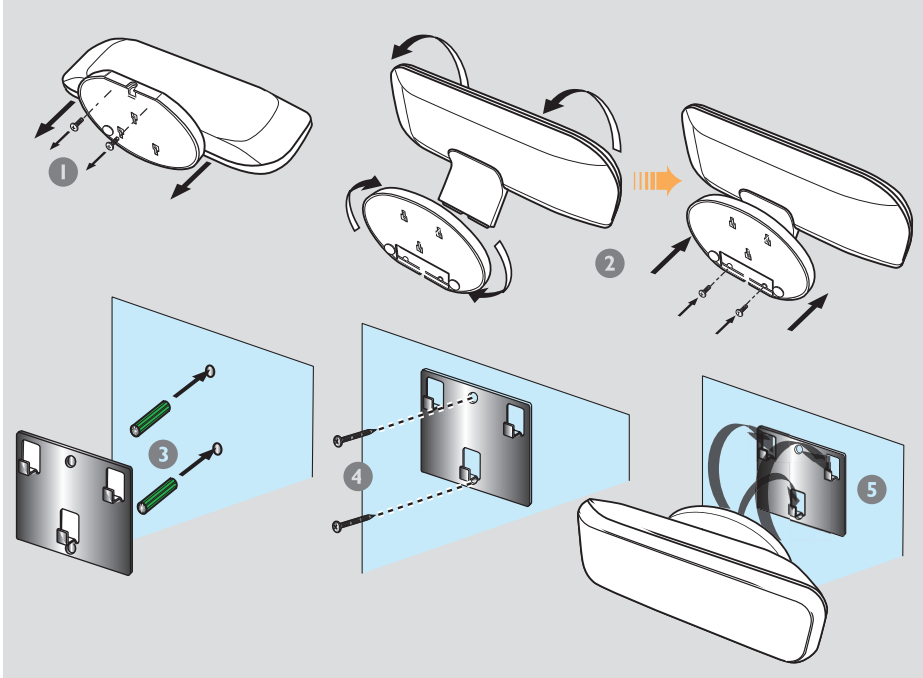
You should get a qualified person to attach the brackets to the wall. DO NOT do it by yourself in order to avoid unexpected damage to the equipment or injury to personnel.

Helpful Hint:

– Philips accepts absolutely no liability for any accidents or damage resulting from inadequate assembly or mounting, misuse or abuse, or natural disasters.

- 1 Remove the back cover from the main DVD system.
- 2 Press on the catch at the centre while detaching the main DVD system from its stand.
- 3 Hold the supplied bracket (white colour) in position and mark holes on the wall for the screws. Drill holes (around 6.5mm diameter) and insert the rubber wall plugs (green colour) into the holes.
- 4 Use the supplied screws to secure the bracket onto the wall.
- 5 Hook the main DVD system firmly onto the mounted bracket by sliding through the bracket to lock into position.

Mounting the SonoWave speakers on the wall



You can choose to hang the SonoWave speakers on the wall. It should be positioned at the normal listening ear level, at the same height and equal distance from the TV.

CAUTION!

You should get a qualified person to attach the brackets to the wall. DO NOT do it by yourself in order to avoid unexpected damage to the equipment or injury to personnel.

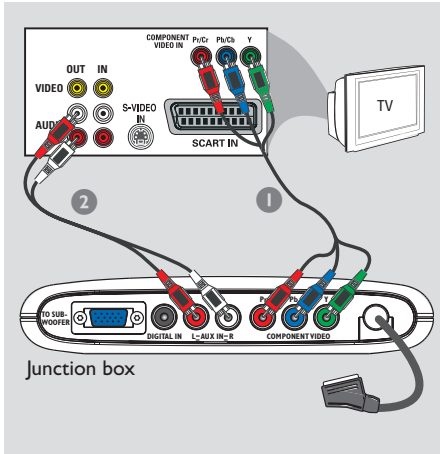
Helpful Hint:

– Philips accepts absolutely no liability for any accidents or damage resulting from inadequate assembly or mounting, misuse or abuse, or natural disasters.

- 1 Remove the base of the SonoWave speakers by loosening the two screws at the bottom.
- 2 Rotate the stand at 180 degrees and tighten the screws.
- 3 Hold the supplied bracket (black colour) in position and mark holes on the wall for the screws. Drill holes (around 6.5mm diameter) and insert the rubber wall plugs (green colour) into the holes.
- 4 Use the supplied screws to secure the bracket onto the wall.
- 5 Hook the SonoWave speakers onto the mounted brackets by sliding through the bracket to lock into position.

Optional Connections (continued)

Connecting to a Progressive Scan TV

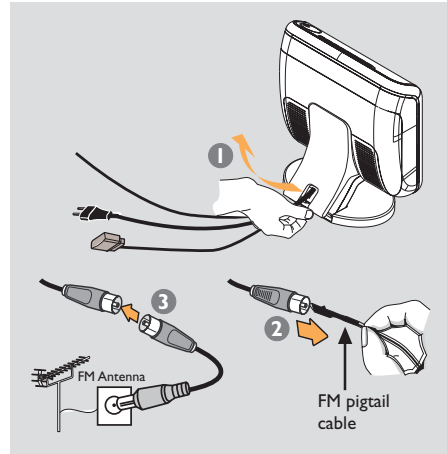


IMPORTANT!

– The progressive scan video quality is only possible when using Y Pb Pr and a progressive scan TV is required.
– DO NOT connect both SCART and Y Pb Pr to a TV, it may affect the picture quality.

- 1 Use the component video cables (red/blue/green - not supplied) to connect the Junction Box's Y Pb Pr sockets to the corresponding component video input sockets (or labelled as Y Pb/Cb Pr/Cr or YUV) on the TV.
- 2 Do not connect the SCART from Junction Box to your TV.
- 2 To hear the TV channels through this DVD system, use an audio cables (white/red - not supplied) to connect **AUX IN** sockets to the corresponding **AUDIO OUT** sockets on the TV.
- 3 Proceed to pages 20~21 for detailed Progressive Scan set up.

Connecting to outdoor FM antenna terminal



If the FM reception is poor, you can use an FM coaxial cable (not supplied) to connect the FM 75Ω coaxial cable hidden inside the back cover directly to the outdoor FM antenna terminal.

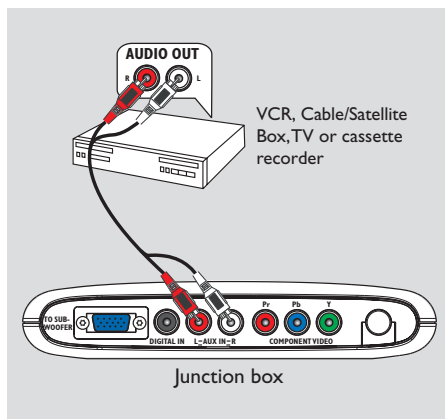
- 1 Open the main DVD system's back cover by lifting up the cover from the bottom.
- 2 Unplug the FM pigtail antenna from the FM 75Ω coaxial cable.
- 3 Connect the FM 75Ω coaxial cable to one end of the FM coaxial cable which is connected to the outdoor FM antenna terminal.

Helpful Hint:

– Position the antennas as far as possible from your TV, VCR or other radiation source to prevent unwanted interference.

Optional Connections (continued)

Connecting to an analogue audio/video device



You can connect an analogue audio/video device (e.g. VCR, Cable/Satellite Box, TV or cassette recorder) to the Junction Box in order to use the Home Theatre Audio System's surround sound capabilities.

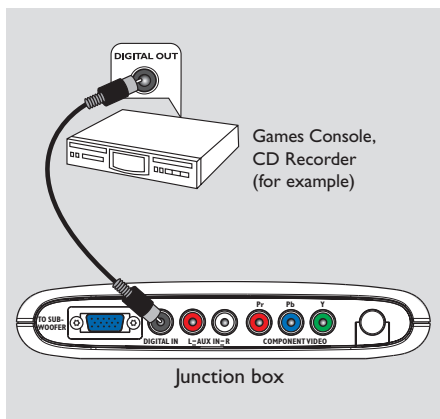
- Connect the Junction Box's **AUX IN (R/L)** sockets to the AUDIO OUT sockets on an analogue audio/video device.

To listen to the sound, press **SOURCE** repeatedly to select "AUX" as the source to play.

Helpful Hints:

- Recording from this DVD system to your VCR is not possible.
- To see the picture of the connected video device (e.g. VCR), connect the VIDEO OUT socket of the device to the VIDEO IN socket of the TV, and select the correct input channel on the TV.

Connecting to a digital audio device



You can connect a digital audio device (e.g. CD recorder) to the Junction Box in order to use the Home Theatre Audio System's surround sound capabilities.

- Connect the Junction Box's **DIGITAL IN** socket to the DIGITAL OUT socket on a digital audio device.

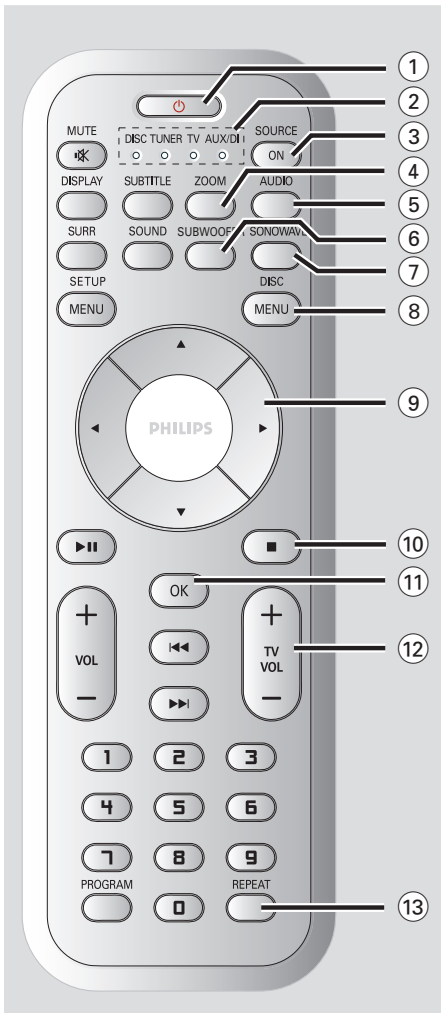
To listen to the sound, press **SOURCE** repeatedly to select "DI" as the source to play.

Helpful Hints:

- You cannot hear or record the SACD or MP3-CD playback if you use the digital connection.
- For your playback through DIGITAL IN connection, set the digital output of that player to PCM format.
- Always refer to the user manual of the other equipment for complete connection and usage details.

Remote Control

English

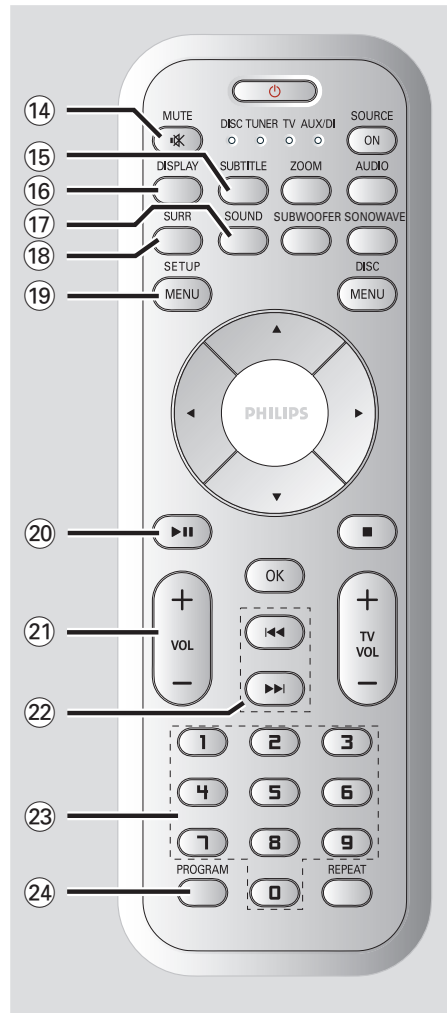


- ① **Power**
 - Switches to Eco Power standby mode.
 - In TV mode, hold down this button to switch Philips TV off/on.
- ② **SOURCE indicator**
 - Indicates the active source.
- ③ **SOURCE ON**
 - Selects the relevant active source mode: DISC, TUNER FM, TV or AUX/DI.

- ④ **ZOOM**
 - DISC: enlarges a picture on the TV screen.
- ⑤ **AUDIO**
 - DISC: selects an audio language (DVD/VCD) or an audio channel (CD).
 - TUNER: toggles between stereo and mono mode.
- ⑥ **SUBWOOFER**
 - Activates the AV subwoofer setting, then use the VOL + - on the remote to adjust the output level.
- ⑦ **SONOWAVE**
 - Activates the SonoWave Speakers settings. Refer to page 42 for detailed adjustment.
- ⑧ **DISC MENU**
 - DISC: enters or exits disc contents menu.
 - For VCD version 2.0 only; In stop mode, turns on/off playback control (PBC) mode. During playback, returns to main menu.
- ⑨ **◀▶▲▼**
 - DISC: selects movement direction in the menu.
 - TUNER: use ▲▼ to start auto tuning.
 - TUNER: use ▶◀ to select a preset radio station.
- ⑩ **■**
 - Exits an operation.
 - DISC: stops playback. Hold down this button to eject the disc.
 - TUNER: hold down this button to erase the current preset radio station.
- ⑪ **OK**
 - Confirms a selection.
 - Hold down this button to set the sleep timer function.
- ⑫ **TV VOL + -**
 - Adjusts TV volume (Philips TV only).
- ⑬ **REPEAT**
 - DISC: selects various repeat modes; switches repeat mode off.

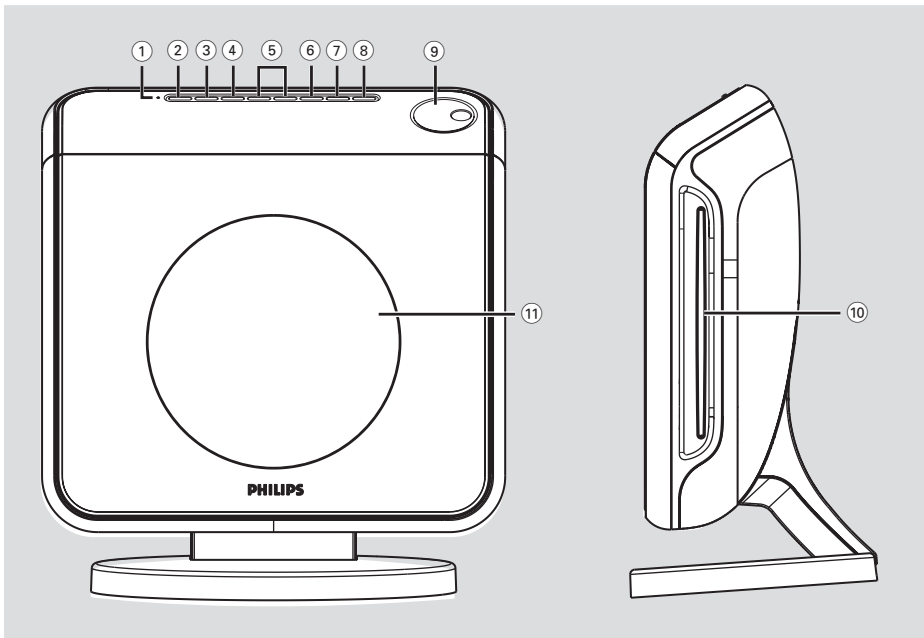
Remote Control (continued)

- ⑭ **MUTE**
 - Mutes or restores the volume.
- ⑮ **SUBTITLE**
 - DISC: selects a subtitle language.
- ⑯ **DISPLAY**
 - Hold down this button to change the brightness of the display panel.
 - DISC: displays the current status or disc information.
- ⑰ **SOUND**
 - Selects a sound effect.
 - Hold down this button to turn on/off night mode (optimise the dynamic of the sound output).
- ⑱ **SURR**
 - Selects multichannel surround or stereo mode.
- ⑲ **SETUP MENU**
 - DISC: enters or exits system setup menu.
- ⑳ **▶ II**
 - DISC: starts/pauses playback.
 - TUNER: starts storing radio stations in Plug & Play mode.
- ㉑ **VOL + -**
 - Adjusts the volume level.
- ㉒ **◀◀ / ▶▶**
 - DISC: select a track or hold down this button to search backward/forward.
 - TV: selects previous/next channel (Philips TV only).
 - TUNER: tunes the radio frequency up/ down.
- ㉓ **Numeric Keypad (0-9)**
 - DISC: enters a track/title number.
 - TUNER: enters the preset radio station number.
- ㉔ **PROGRAM**
 - DISC: starts programming.
 - TUNER: starts *automatic/ manual preset programming.



Main Unit

English



① **ECO POWER indicator**

- Lights up when in Eco Power standby mode.

② **STANDBY ON** 

- Switches to Eco Power standby mode, or turns on the system.

③ **SOURCE**

- Selects the relevant active source mode: DISC, TUNER FM, TV or AUX/DI.

④ **SURROUND**

- Selects multichannel surround or stereo mode.

⑤ **PREV / NEXT**

- DISC: select a track or hold down this button to search backward/forward.
- TUNER: tunes the radio frequency up/down.

⑥ **PLAY PAUSE**

- DISC: starts/pauses playback.
- TUNER: starts preset radio station installation in Plug & Play mode.

⑦ **STOP**

- Exits an operation.
- DISC: stops playback.
- TUNER: hold down this button to erase the current preset radio station.

⑧ **EJECT**

- DISC: ejects the disc.

⑨ **VOLUME**

- Adjusts the volume level.

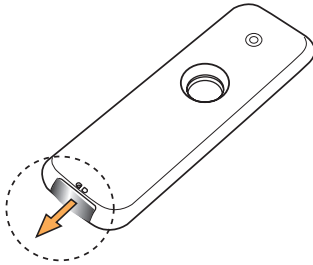
⑩ **Disc slot**

⑪ **System display panel**

Getting Started

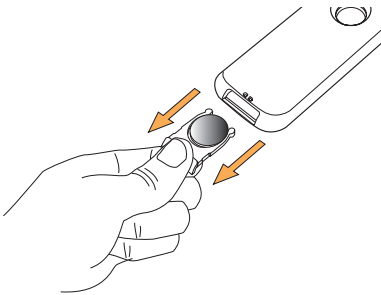
Step 1: Preparing the remote control

Before you start using the remote control, pull out the plastic protective sheet.



To change the battery

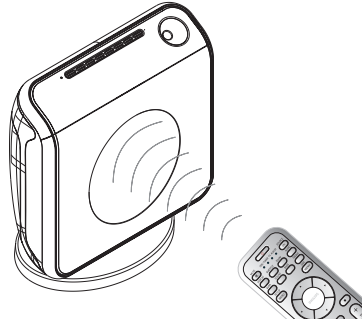
- Pull out the battery compartment and replace with the battery type LITHIUM CR2025.



CAUTION!

- Remove battery if it is exhausted or if the remote control is not to be used for a long time.
- Batteries contain hazardous chemical substances, so they should be disposed of properly.

Using the remote control to operate the system



- 1 Aim the remote control directly at the remote sensor (iR) on the front panel.
- 2 Press **SOURCE** button on the remote to select the mode you wish to control (for example TV, DISC). The selected source mode will light up on the LED panel for a few seconds.
- 3 Then select the desired function (for example ▶, ◀, ◀◀, ▶▶).

Step 2: Switching on the DVD system

- Press **SOURCE** button repeatedly to select :
DISC → TUNER FM → TV → AUX
→ DI → DISC

Switching to Eco Power standby mode

- Press **STANDBY ON** (⏻).
→ The display screen will go blank.
→ The Eco Power indicator will light up in red.

Getting Started (continued)

Step 3: Setting the TV

After connecting the DVD system to your TV, you have to switch the TV to the correct programme number for the input socket (e.g. 'EXT', '0', 'AV') in order to view the playback from the DVD system.

- 1 Press **SOURCE** button until "DISC" appears on the display panel.
- 2 Turn on the TV and set it to the correct video-in channel. You should see the blue DVD background screen on the TV.
 - Usually this channel is between the lowest and highest channels and may be called FRONT, A/V IN, VIDEO. See your TV manual for more details.
 - Or, you may go to channel 1 on your TV, then press the Channel down button repeatedly until you see the Video In channel.
 - Or, the TV remote control may have a button or switch that chooses between different video modes.

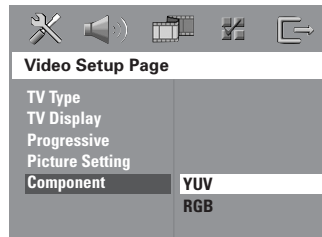
Setting up Progressive Scan feature (for Progressive Scan TV only)

The progressive scan display twice the number of frames per seconds than interlaced scanning (ordinary normal TV system). With nearly double the number of lines, progressive scan offers higher picture resolution and quality.

IMPORTANT!

Before enabling the progressive scan feature, you must ensure :

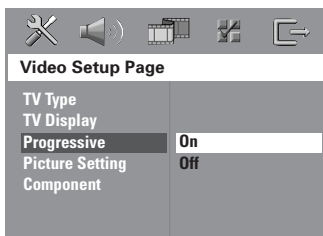
- 1) Your TV can accept progressive signals, a progressive scan TV is required.
 - 2) You have connected the DVD system to your TV using Y Pb Pr (see page 14).
- 1 Turn off your TV progressive scan mode or turn on interlaced mode (refer to your TV user manual).
 - 2 Press **SOURCE** button until "DISC" appears on the display panel.
 - 3 Turn on your TV and select the correct Video Input channel (see page 20).
 - The blue DVD background screen will appear on the TV.
 - 4 Press **SETUP MENU** on the remote.
 - 5 Press **▶** to select 'Video Setup Page'.
 - 6 Select { **Component** } > { **YUV** }, then press **OK** to confirm.



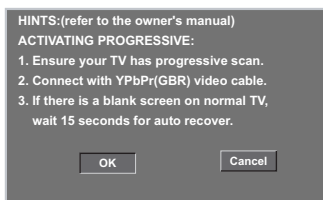
TIPS: The underlined option is the factory default setting. To return to the previous menu, press **◀**. To remove the menu, press **SETUP MENU**.

Getting Started (continued)

- 7 Select { **Progressive** } > { **On** }, then press **OK** to confirm.



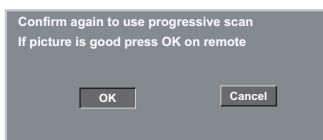
- 8 The below menu will appear on the TV.



- 9 Press **◀** to highlight **OK** in the menu and press **OK** to confirm.

There will be no picture on your TV at this state until you turn on the progressive scan mode on your TV.

- 10 Turn on your TV progressive scan mode (refer to your TV user manual).
→ The below menu will appear on the TV.



- 11 Press **◀** to highlight **OK** in the menu and press **OK** to confirm.
→ The set up is complete now and you can start enjoy the high quality picture.

If no picture:

- Wait for 15 seconds for the auto recovery.
OR
- 1 Deactivate Progressive Scan feature by pressing the **EJECT** on the DVD system.
- 2 Press **◀** on the remote.
- 3 Press **SUBTITLE** on the remote.
→ The blue DVD background screen will appear on the TV.

Helpful Hint:

– There are some progressive scan TV and High-Definition TV sets that are not fully compatible with this DVD system, resulting in the unnatural picture when playing back a DVD VIDEO disc in the progressive scan mode. In such a case, turn off the progressive scan feature on both the DVD system and your TV set.

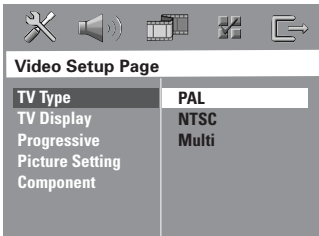
TIPS: The underlined option is the factory default setting.
To return to the previous menu, press **◀**. To remove the menu, press **SETUP MENU**.

Getting Started (continued)

Selecting the matching colour system

The colour system of the DVD system, DVD and TV should match. Only then will it be possible to play a DVD on this system. Before changing the TV system, determine the colour system of your TV.

- 1 In disc mode, press **SETUP MENU**.
- 2 Press **▶** repeatedly to select { Video Setup Page }.
- 3 Use **▲▼** keys to highlight { **TVType** }, then press **▶**.

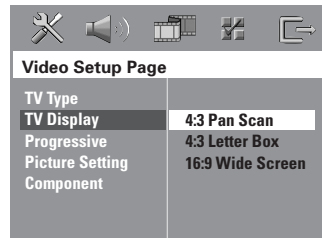


- 4 Use **▲▼** keys to highlight one of the options below:
 - { **PAL** }
Select this if the connected TV has the PAL colour system. It will change the video signal of an NTSC disc and output it to PAL format.
 - { **NTSC** }
Select this if the connected TV has the NTSC colour system. It will change the video signal of a PAL disc and output it to NTSC format.
 - { **Multi** }
Select this if the connected TV is compatible with both NTSC and PAL (multi-system). The output format will be in accordance with the video signal of the disc.
- 5 Select a setting and press **OK**.
 - Follow the instructions shown on the TV to confirm the selection (if any).
 - If a blank/distorted TV screen appears, wait for 15 seconds for the auto recovery.

Setting the TV Display

Set the aspect ratio of the DVD system according to the TV you have connected. The format you select must be available on the disc. If it is not, the setting for TV display will not affect the picture during playback.

- 1 In disc mode, press **SETUP MENU**.
- 2 Press **▶** repeatedly to select { Video Setup Page }.
- 3 Use **▲▼** keys to highlight { **TV Display** }, then press **▶**.



- 4 Use **▲▼** keys to highlight one of the options below:

{ **4:3 Pan Scan** }

Select this if you have a conventional TV and want both sides of the picture to be trimmed or formatted to fit your TV screen.



{ **4:3 Letter Box** }

Select this if you have a conventional TV. In this case, a wide picture with black bands on the upper and lower portions of the TV screen will be displayed.



{ **16:9 Wide Screen** }

Select this if you have a wide-screen TV.



- 5 Select a setting and press **OK**.

TIPS: The underlined option is the factory default setting.
To return to the previous menu, press **◀**. To remove the menu, press **SETUP MENU**.

Getting Started (continued)

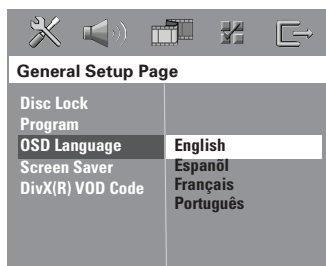
Step 4: Setting language preferences

You can select your preferred language settings so that this DVD system will automatically switch to the language for you whenever you load a disc. If the language selected is not available on the disc, the disc's default language will be used instead.

The OSD (On-Screen Display) language for the system menu will remain as you set it, regardless of the default and optional disc languages.

On-screen display (OSD) language

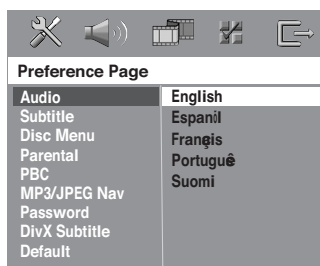
- 1 In disc mode, press **SETUP MENU**.
- 2 Press **▶** to select { General Setup Page }.
- 3 Use **▲▼** keys to highlight { **OSD Language** }, then press **▶**.



- 4 Use **▲▼** keys to select a language and press **OK** to confirm.

Audio, Subtitle and Disc menu languages

- 1 Press **■** twice to stop playback (if any), then press **SETUP MENU**.
- 2 Press **▶** repeatedly to select { Preference Page }.
- 3 Use **▲▼** keys to highlight one of the options below, then press **▶**.
 - { **Audio** } (disc's soundtrack)
 - { **Subtitle** } (disc's subtitles)
 - { **Disc Menu** } (disc's menu)



- 4 Use **▲▼** keys to select a language and press **OK** to confirm.

If the language you want is not in the list, then select { Others }.

Use the **numeric keypad (0-9)** on the remote to enter the 4-digit language code 'XXXX' (see page 5) and press **OK** to confirm.

- 5 Repeat steps 3~4 for other settings.

TIPS: The underlined option is the factory default setting.
To return to the previous menu, press **◀**. To remove the menu, press **SETUP MENU**.

Disc Operations

IMPORTANT!

- If the inhibit icon (Ø or X) appears on the TV screen when a button is pressed, it means the function is not available on the current disc or at the current time.
- DVD discs and players are designed with regional restrictions. Before playing a disc, make sure the disc is for the same zone as your player.
- Do not put any objects other than discs on the disc slot. Doing so may cause the disc player to malfunction.

Playable discs



Your DVD home theatre system will play:

- Digital Versatile Discs (DVDs)
- Video CDs (VCDs)
- Super Video CDs (SVCDs)
- Super Audio CDs (SACDs)
- Finalised DVD+Recordable[Rewritable] (DVD+R[W])
- Audio Compact Discs (CDs)
- MP3 discs, picture (Kodak, JPEG) files on CD-R(W).
 - JPEG/ISO 9660/UDF format
 - JPEG resolution support up to 3072 x 2048
 - Supported sampling frequencies : 32 kHz, 44.1 kHz, 48 kHz
 - Supported Bit-rates : 32~256 (kbps), variable bit rates
- MPEG-4 files on CD-R[W]:
 - Simple profile
 - Advanced simple profile (640-480)
- DivX disc on CD-R[W]/DVD+R[W]:
 - DivX 3.11, 4.x and 5.x
 - GMC (Global Motion Compensation) and QP (Quarter Pixel) not supported.

Region Codes

The regional code 'X' (denotes the number) of this device is shown at the back panel of this device. If the DVD is marked with a different region code, it cannot be played on this device.



Helpful Hints:

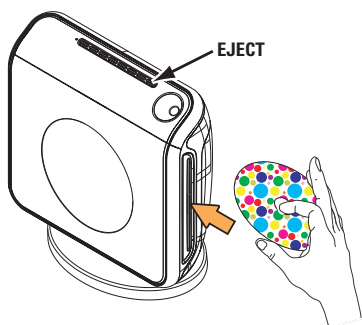
- It may not be possible to play CD-R/RW or DVD-R/RW in all cases due to the type of disc or condition of the recording.
- If you are having trouble playing a certain disc, remove the disc and try a different one. Improperly formatted discs will not play on this DVD system.

TIPS: Some discs cannot be played on this DVD system due to the configuration and characteristics of the disc, or due to the condition of recording and authoring software that was used.

Disc Operations (continued)

Playing a disc

- 1 Press **SOURCE** button until "DISC" appears on the display panel.
- 2 Turn on the TV power and set to the correct Video In channel. (See page 20 "Setting the TV").
→ You should see the blue DVD background screen on the TV.
- 3 Insert a disc into the disc slot.
→ Make sure the disc label is facing out.
For double-sided discs, load the side you want to play facing out.
→ When loading an 8cm disc, slot into the middle of the disc loader.



- 4 Playback will start automatically.
→ If a disc menu shows on the TV, see page 26 "Using the Disc Menu".
→ If the disc is locked by parental control, you must enter your six-digit password. (see pages 37~38).
- 5 To remove the disc, press **EJECT** (or hold down the ■ button on the remote).

Auto Eco Power standby mode

This is a power-saving feature, the system will automatically switch to Eco Power standby mode if you do not press any buttons within 30 minutes after a disc has stopped playing.

Basic playback controls

Pausing playback

- During playback, press ►► (PLAY PAUSE).
→ To resume normal playback, press the same button again.

Selecting another track/chapter

- Press ◀◀ / ▶▶ (PREV / NEXT) or use the numeric keypad (0-9) to key in a track/chapter number.
→ If repeat track mode is active, pressing ◀◀ / ▶▶ will replay the same track/chapter.

Searching backward/forward

- Press and hold ◀◀ / ▶▶ (PREV / NEXT).
→ While searching, pressing ◀◀ / ▶▶ again will decrease/increase the search speed.
→ To resume normal playback, press ►► (PLAY PAUSE).

Stopping playback

- Press ■ (STOP).

TIPS: The operating features described here might not be possible for certain discs. Always refer to the instructions supplied with the discs.

Disc Operations (continued)

Selecting various repeat/shuffle functions

- While playing a disc, press **REPEAT** on the remote repeatedly to choose a repeat play mode.

DVD

- RPT ONE (repeat chapter)
- RPT TT (repeat title)
- SHUFFLE (random play)
- RPT SHF (repeat random play)
- RPT OFF (exit repeat mode)

VCD/SVCD/CD

- RPT ONE (repeat track)
- RPT ALL (repeat disc)
- SHUFFLE (random play)
- RPT SHF (repeat random play)
- RPT OFF (exit repeat mode)

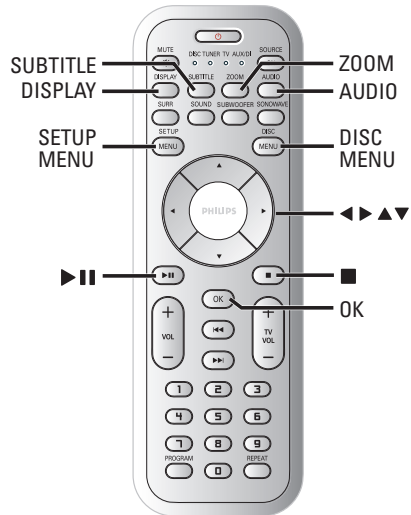
MP3/SACD/DivX

- RPT ONE (repeat track)
- RPT ALL/FLD (repeat folder)
- SHUFFLE (random play)
- RPT OFF (exit repeat mode)

Helpful Hint:

– VCDs do not allow repeat playback as long as the PBC mode is switched on.

Other operations for video playback (DVD/VCD/SVCD)



Using the Disc Menu

A menu may appear on the TV screen once you load in the disc, depending on the disc format.

To select a playback feature or item

- Use ◀▶▲▼ keys or **numeric keypad (0-9)** on the remote, then press **OK** to start playback.

To access or remove the menu

- Press **DISC MENU** on the remote.

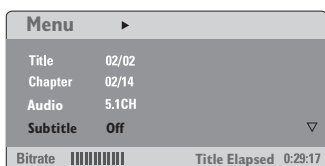
TIPS: The operating features described here might not be possible for certain discs. Always refer to the instructions supplied with the discs.

Disc Operations (continued)

Viewing playback information

It will show the disc playback information (for example, title or chapter number, elapsed playing time, audio/subtitle language), a number of operations can be done without interrupting disc playback.

- 1 During playback, press **DISPLAY**.
→ A list of available disc information appears on the TV screen.



- 2 Use **▲▼** keys to view the information and press **OK** to access.
- 3 Use the **numeric keypad (0-9)** to input the number/time or use **▲▼** keys to make the selection, then press **OK** to confirm.
→ Playback will change to the chosen time or to the selected title/chapter/track.

Resuming playback from the last stopped point

This DVD system able to resume disc playback from its last stopped point (only possible for the last 10 discs that recorded without a menu).

- 1 Load one of the last played 10 discs.
- 2 While "LOADING" appears on the display panel, press **▶II (PLAY PAUSE)** to start playback from the last stop point.

To cancel the resume mode

- In stop mode, press **■ (STOP)** again.

Zooming in

This function allows you to enlarge the picture on the TV screen and to pan through the enlarged picture.

- 1 During playback, press **ZOOM** repeatedly to select a different zoom factor.
→ Use **◀▶▲▼** keys to move through the zoomed image.
→ Playback will continue.
- 2 Press **ZOOM** repeatedly to return to the original size.

TIPS: The operating features described here might not be possible for certain discs. Always refer to the instructions supplied with the discs.

Disc Operations (continued)

Changing sound track language

This operation works only on DVDs with multiple soundtrack languages, you can change the language you want while playing a DVD.

- Press **AUDIO** repeatedly to select the available audio languages.

For VCD - changing the audio channel

- Press **AUDIO** repeatedly to select the available audio channels provided by the disc (STEREO, MONO LEFT, MONO RIGHT or MIX MONO).

Changing subtitle language (DVD only)

This operation works only on DVDs with multiple subtitle languages, you can change the language you want while playing a DVD.

- Press **SUBTITLE** repeatedly to select different subtitle languages.

Playback Control (PBC) (VCD only)

PBC playback allows you to play Video CDs interactively, following the menu on the display. This function can also be accessed via the 'Preference Page' menu (see page 38).

For VCDs with Playback Control (PBC) feature (version 2.0 only)

- When play is stopped, press **DISC MENU** to toggle between 'PBC ON' and 'PBC OFF'.
 - If you select 'PBC ON', the disc menu (if available) will appear on the TV. Use **▲ ▼** keys or numeric keypad (0-9) to select a play option and press **OK** to confirm.
 - If you select 'PBC OFF', the VCD will skip the index menu and playback directly from the beginning.

TIPS: The operating features described here might not be possible for certain discs. Always refer to the instructions supplied with the discs.

Disc Operations (continued)

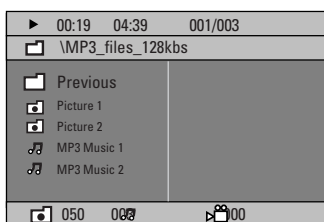
Playing an MP3/JPEG/MPEG-4 disc

This DVD system can playback MPEG-4, MP3, JPEG, VCD & SVCD files on a personally recorded CD-R/RW disc or commercial CD.

IMPORTANT!

You have to turn on your TV and set to the correct Video In channel. (See page 20 "Setting the TV").

- 1 Insert a disc.
 - The disc reading time may exceed 30 seconds due to the complexity of the directory/file configuration.
 - The disc menu appears on the TV screen.



- 2 If the disc main menu contains various folders, use ▲▼ keys to select a desired folder and press **OK** to open the folder.
- 3 Use ▲▼ keys to select a track/file and press **OK** to start playback.
 - Playback will start from the selected file and continue to the end of the folder.

During playback, you can;

- Press ◀◀ / ▶▶ to select another track/file in the current folder.
- Press and hold ◀◀ / ▶▶ to fast reverse/forward search a music track.
- To select another folder from the current disc, press ▲ to return to the root menu, then use ▲▼ keys to make your selection and press **OK** to confirm.

- Press **REPEAT** continuously to access various play mode.
- Press **▶II (PLAY PAUSE)** to interrupt playback and press the same button again to resume playback.

Playing MP3 music and JPEG picture simultaneously

- 1 Insert an MP3 disc that contains music and pictures.
 - The disc menu appears on the TV screen.
- 2 Select an MP3 track and press **▶II (PLAY PAUSE)** to start playback.
- 3 During MP3 music playback, use ◀▶▲▼ keys to select a picture folder from the disc menu and press **▶II (PLAY PAUSE)**.
 - The picture files will be played back until the end of the folder.
- 4 To quit simultaneous playback, press **DISC MENU** and followed by **■ (STOP)**.

Helpful Hints:

- It may not be possible to play certain MP3/JPEG/DivX/MPEG-4 disc due to the configuration and characteristics of the disc or condition of the recording.
- It is normal to experience an occasional "skip" while listening to your MP3 disc.
- It is normal to experience an occasional pixelation during MPEG-4/DivX playback due to poor clarity of digital contents during internet downloading.
- For multi-session discs with different formats, only the first session will be available.

TIPS: Some discs cannot be played on this DVD system due to the configuration and characteristics of the disc, or due to the condition of recording and authoring software that was used.

Disc Operations (continued)

Playing a picture disc (slide show)

IMPORTANT!

You have to turn on your TV and set to the correct Video In channel. (See page 20 "Setting the TV").

- Insert a Picture disc (Kodak Picture CD, JPEG).
 - For a Kodak disc, the slide show will begin automatically.
 - For a JPEG disc, the picture menu will appear on the TV screen. Press **▶||** (**PLAY PAUSE**) to start the slide-show playback.

Preview Function

This function shows the content of the current folder or the whole disc.

- 1 During playback, press **■** (**STOP**).
 - 12 thumbnail pictures will appear on the TV screen.



- 2 Press **◀◀** / **▶▶** to display the other pictures on the previous/next page.
- 3 Use **◀▶** **▲▼** keys to highlight one of the picture and press **OK** to start playback.
- 4 Press **DISC MENU** to return to Picture CD menu.

Zoom picture

- 1 During playback, press **ZOOM** repeatedly to select different zoom factor.
- 2 Use **◀▶** **▲▼** keys to move through the zoomed image.

Rotating/Flipping the picture

- During playback, use **◀▶** **▲▼** keys to rotate/flip the picture on the TV screen.
 - ▲ : flip the picture vertically
 - ▼ : flip the picture horizontally
 - ◀ : rotate the picture anti-clockwise
 - ▶ : rotate the picture clockwise

Supported JPEG picture formats

File format:

- The file extension has to be '*.JPG' and not '*.JPEG'.
- It can only display DCF-standard still pictures or JPEG pictures e.g. TIFF. It cannot play back moving pictures, Motion JPEG, progressive JPEG and other formats, or pictures in formats other than JPEG, or pictures associated with sound.
- It may require longer time for the DVD system to display the disc content on the TV due to the large number of songs/pictures compiled into one disc.

TIPS: Some discs cannot be played on this DVD system due to the configuration and characteristics of the disc, or due to the condition of recording and authoring software that was used.

Playing a Super Audio CD (SACD)

There are three types of SACD discs : single layer, double layer or hybrid discs. The hybrid disc contains both Super Audio CD and standard audio CD layers, only the SACD layer can be played back on this DVD system.

- 1 Insert a SACD.
→ The disc menu appears on the TV screen.
- 2 Playback will start automatically.
→ If the SACD consists of multi-channel and stereo tracks, multi-channel tracks will have the priority for playback.
→ To playback stereo tracks, use ▲ ▼ keys to make your selection from the disc menu, then press ►II (PLAY PAUSE).

Helpful Hint

– It is not possible to programme SACD tracks.

Playing a DivX disc

This DVD system supports the playback of DivX movie which you download from your computer onto a CD-R/RW (see page 33 for more information).

- 1 Insert a DivX disc.
- 2 If the DivX movie contains external subtitles, the subtitle menu will appear on the TV for your selection.
 - In this case, pressing **SUBTITLE** on the remote will turn on or off the subtitle display.
- 3 Press ►II (PLAY PAUSE) to start playback.
 - If multilingual subtitles are embedded on the DivX disc, you can press **SUBTITLE** to change the subtitle language while playing.

Helpful Hints:

- Subtitle files with the following filename extensions (.srt, .smi, .sub, .ssa, .ass) are supported but do not appear on the file navigation menu.
- The subtitle filename has to be the same as the filename of the movie.
- The subtitle can only be displayed up to maximum of 35 characters.

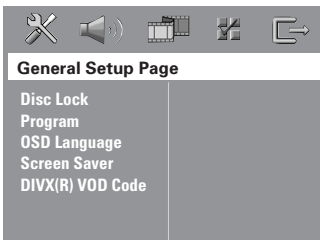
TIPS: Some discs cannot be played on this DVD system due to the configuration and characteristics of the disc, or due to the condition of recording and authoring software that was used.

DVD Setup Menu Options

This DVD system setup is carried out via the TV, enabling you to customise the DVD system to suit your particular requirements.

Accessing General Setup Page

- 1 In disc mode, press **SETUP MENU**.
- 2 Press **◀▶** to select 'General Setup Page'.
- 3 Press **OK** to confirm.



Locking/Unlocking the disc for viewing

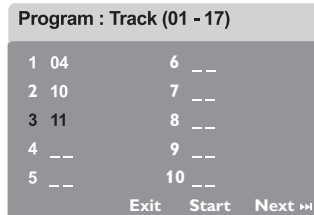
Not all discs are rated or coded by the disc maker. You can prevent a specific disc from playing by locking the disc. Up to 40 discs can be locked.

- 1 In 'General Setup Page', use **▲▼** keys to highlight { **Disc Lock** }, then press **▶**.
 { **Lock** }
 Select this to block the playback of the current disc. Subsequent access to a locked disc requires six-digit password. The default password is '136900' (see page 39 "Changing the password").
 { **Unlock** }
 Select this to unlock the disc and allow future playback.
- 2 Use **▲▼** keys to select a setting and press **OK** to confirm.

Programming disc tracks (not for Picture CD/MP3/SACD)

You can play the contents of the disc in the order you want by programming the playing order of the tracks. Up to 20 tracks can be stored.

- 1 Press **PROGRAM** on the remote.
 OR
 In 'General Setup Page', use **▲▼** keys to highlight { **Program** }, then press **▶** to select { **Input Menu** }.
- 2 Press **OK** to confirm.



To programme your favourite tracks/ chapter

- 3 Use the **numeric keypad (0-9)** to enter a valid track/chapter number.
- 4 Use **◀▶▲▼** keys to move the cursor to the next position.
 → If the total programme tracks are more than ten, press **▶▶▶** to open the next page and proceed with programming or,
 → Use **◀▶▲▼** keys to highlight { **Next** } on the programme menu, then press **OK**.
- 5 Repeat steps 3~4 to input another track/chapter number.

TIPS: The underlined option is the factory default setting.
 To return to the previous menu, press **◀**. To remove the menu, press **SETUP MENU**.

DVD Setup Menu Options (continued)

If you want to remove a track

- 6 Use ◀▶▲▼ keys to move the cursor to the track you want to remove.
- 7 Press **OK** to remove this track from the programme menu.

To start programme playback

- 8 Use ◀▶▲▼ keys to highlight { **Start** } on the programme menu, then press **OK**.
→ Playback will start with the selected tracks under the programmed sequence.

To exit programme playback

- 9 Use ◀▶▲▼ keys to highlight { **Exit** } on the programme menu, then press **OK**.

OSD Language

This menu contains various language options for the language displayed on the screen. For details, see page 23.

Screen Saver - turning on/off

The screen saver will help to prevent your TV display device from getting damaged.

- 1 In 'General Setup Page', use ▲▼ keys to highlight { **Screen Saver** }, then press ▶.

{ **On** }

Select this if you wish to turn off the TV screen when play is stopped or paused for more than 15 minutes.

{ **Off** }

Select this to disable the screen saver function.

- 2 Use ▲▼ keys to select a setting and press **OK** to confirm.

DivX® VOD registration code

Philips provide you the DivX® VOD (Video On Demand) registration code that allows you to rent and purchase videos using the DivX® VOD service. For more information, visit us at www.divx.com/vod.

- 1 In 'General Setup Page', use ▲▼ keys to highlight { **DIVX(R) VOD Code** }, then press ▶.
→ The registration code will appear.

- 2 Press **OK** to exit.

- 3 Use the registration code to purchase or rent the videos from DivX® VOD service at www.divx.com/vod. Follow the instructions and download the video from your computer onto a CD-R/RW for playback on this DVD system.

Helpful Hint:

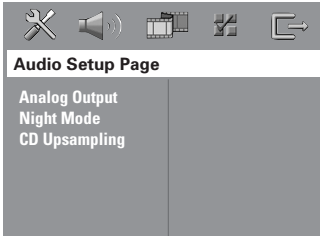
– All the downloaded videos from DivX® VOD can only be played back on this DVD system.

TIPS: The underlined option is the factory default setting.
To return to the previous menu, press ◀. To remove the menu, press **SETUP MENU**.

DVD Setup Menu Options (continued)

Accessing Audio Setup Page

- 1 In disc mode, press **SETUP MENU**.
- 2 Press ◀▶ to select 'Audio Setup Page'.
- 3 Press **OK** to confirm.



Setting the analogue output

Set Analogue Output to match your DVD home theatre system's playback capability. This function can also be accessed via the **SURR.** button on the remote.

- 1 In 'Audio Setup Page', press ▲▼ to highlight { **Analog Output** }, then press ▶.
{ Stereo }
Select this to change channel output to stereo that delivers sound from only the two front speakers and subwoofer.
{ Multi-channel }
Select this to enable Multi-channel output.
- 2 Use ▲▼ keys to select a setting and press **OK** to confirm.

Helpful Hint:

– This feature is not available for SACD playback.

Night Mode - turning on/off

When the night mode is activated, the high volume outputs are softened and low volume outputs are brought upward to an audible level (for DVD only). It is useful for watching action movies without disturbing others at night.

- 1 In 'Audio Setup Page', use ▲▼ keys to highlight { **Night Mode** }, then press ▶.
{ On }
Select this to level out the volume.
{ Off }
Select this when you want to enjoy the surround sound with its full dynamic range.
- 2 Use ▲▼ keys to select a setting and press **OK** to confirm.

CD Upsampling

This feature allows you to convert your music CD to a higher sampling rate using sophisticated digital signal processing for better sound quality.

If you have activated the CD upsampling, the system will automatically switch to stereo mode.

- 1 In 'Audio Setup Page', use ▲▼ keys to highlight { **CD Upsampling** }, then press ▶.
{ Off }
Select this to disable CD-upsampling.
{ 88.2 kHz (X2) }
Select this to convert the sampling rate of the CDs twice higher than the original.
- 2 Use ▲▼ keys to select a setting and press **OK** to confirm.

Helpful Hint:

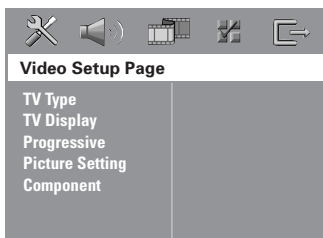
– If you press **SURR** button on the remote control to select "Multi-Channel" mode, it will disable the CD upsampling feature.

TIPS: The underlined option is the factory default setting.
To return to the previous menu, press ◀. To remove the menu, press **SETUP MENU**.

DVD Setup Menu Options (continued)

Accessing Video Setup Page

- 1 In disc mode, press **SETUP MENU**.
- 2 Press **◀▶** to select 'Video Setup Page'.
- 3 Press **OK** to confirm.



TV Type

This menu contains the options for selecting the colour system that matches the connected TV. For details, see page 22.

TV Display

This menu contains the options for setting the aspect ratio of the DVD system according to the connected TV. For details, see page 22.

Progressive function - turning on/off

In the progressive scan mode, you can enjoy the high quality picture with less flickers. It only works when you have connected the DVD system's Y Pb Pr sockets to your TV that supports the progressive video input. Otherwise, the image may not appear or will be distorted. For proper progressive scan set up, see pages 20~21.

IMPORTANT!

Before enabling the progressive scan function, you must ensure :

- 1) Turn on your TV progressive scan function (refer to your TV owner's manual).
- 2) You have connected the DVD system to your TV using Y Pb Pr (see page 14).

- 1 In 'Video Setup Page', use **▲▼** keys to highlight { **Progressive** }, then press **▶**.

{ **Off** }

Select this to disable progressive scan function.

{ **On** }

Select this to enable progressive scan function.

- 2 Use **▲▼** keys to select a setting and press **OK** to confirm.
 - Follow the instructions shown on the TV to confirm the selection (if any).
 - If a blank/distorted TV screen appears, wait for 15 seconds for the auto recovery.

TIPS: The underlined option is the factory default setting.
To return to the previous menu, press **◀**. To remove the menu, press **SETUP MENU**.

DVD Setup Menu Options (continued)

Picture Setting

This DVD system provides three predefined sets of picture colour settings and one personal setting which you can define yourself.

- In 'Video Setup Page', use ▲▼ keys to highlight { **Picture Setting** }, then press ►.

{ Standard }

Select this for original colour setting.

{ Bright }

Select this for vibrant colour setting.

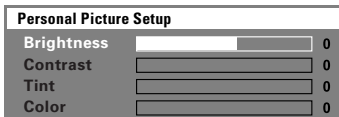
{ Soft }

Select this for warm colour setting.

{ Personal }

Select this to personalise your picture colour by adjusting the brightness, contrast, tint and colour (saturation).

- Use ▲▼ keys to select a setting and press **OK** to confirm.
- If you select { **Personal** }, then proceed to steps 4~7.
→ The 'Personal picture setup' menu appears.



- Use ▲▼ keys to highlight one of the following options.

{ Brightness }

Increase this value to brighten the picture colour or vice versa. Choose zero (0) for the average setting.

{ Contrast }

Increase this value to sharpen the picture colour or vice versa. Choose zero (0) to balance the contrast.

{ Tint }

Increase or decrease this value to change the colour phase of the picture. Choose zero (0) for the average setting.

{ Color }

Increase this value to enhance the picture colour or vice versa. Choose zero (0) to balance the colour.

- Press ◀▶ to adjust the setting that best suit your personal preference.
- Repeat steps 4~5 to adjust other settings.
- Press **OK** to confirm.

Setting the Video Output

Choose the type of video output that matches the video connection between the DVD system and your TV.

- In 'Video Setup Page', use ▲▼ keys to highlight { **Component** }, then press ►.

{ YUV }

Select this if you have connected the DVD system to your TV using component video sockets (Y Pb Pr).

{ RGB }

Select this if you have connected the DVD system to your TV using scart socket. The factory default setting is RGB.

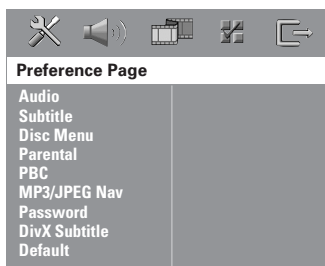
- Use ▲▼ keys to select a setting and press **OK** to confirm.

TIPS: The underlined option is the factory default setting.
To return to the previous menu, press ◀. To remove the menu, press **SETUP MENU**.

DVD Setup Menu Options (continued)

Accessing Preference Setup Page

- 1 Press **■** twice to stop playback (if any), then press **SETUP MENU**.
- 2 Press **◀▶** to select the 'Preference Page'.
- 3 Press **OK** to confirm.



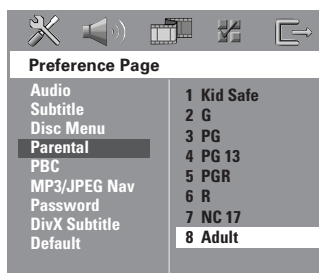
Audio, Subtitle, Disc Menu

These menus contain various language options for audio, subtitle and disc menu that may be recorded on the DVD. For details, see page 23.

Restricting playback by Parental Control

Some DVDs may have a parental level assigned to the complete disc or to certain scenes on the disc. This feature lets you set a playback limitation level. The rating levels are from 1 to 8 and are country dependent. You can prohibit the playback of certain discs that are not suitable for your children, or have certain discs played with alternative scenes.

- 1 In 'Preference Page', use **▲▼** keys to highlight { **Parental** }, then press **▶**.



- 2 Use **▲▼** keys to highlight a rating level for the disc inserted and press **OK**.
- 3 Use the **numeric keypad (0-9)** to enter the six-digit password (see page 39 "Changing the password").
→ DVDs that are rated above the level you selected will not play unless you enter your six-digit password.

TIPS: The underlined option is the factory default setting.
To return to the previous menu, press **◀**. To remove the menu, press **SETUP MENU**.

DVD Setup Menu Options (continued)

Rating explanations

1 KID SAFE – 2 G

– General Audience; recommended as acceptable for viewers of all ages.

3 PG

– Parental Guidance suggested.

4 PG13

– Material is unsuitable for children under the age of 13.

5 PGR – 6 R

– Parental Guidance - Restricted; recommended that parents restrict children under the age of 17 from viewing or allow them to view only when supervised by a parent or adult guardian.

7 NC-17

– No children under the age of 17; not recommended viewing for children under the age of 17.

8 ADULT

– Mature material; should be viewed only by adults due to graphic sexual material, violence or language.

Helpful Hints:

– VCD, SVCD, CD have no level indication, so parental control has no effect on these type of discs. This also applies to most illegal DVDs.

– Some DVDs are not encoded with a rating though the movie rating may be printed on the Disc cover. The rating level feature does not prohibit playback of such Discs.

PBC (Playback Control)

PBC (Playback Control) allows you to play Video CDs interactively, following the menu on the display. This feature is available only on Video CD 2.0 with playback control (PBC) feature.

- 1 In 'Preference Page', use ▲▼ keys to highlight { **PBC** }, then press ►.

{ **On** }

Select this if you wish to display the index menu once you load in the VCD.

{ **Off** }

Select this to skip the index menu and start playback directly.

- 2 Use ▲▼ keys to select a setting and press **OK** to confirm.

MP3/JPEG Menu - turning on/off

MP3/JPEG Navigator can be set only if the disc is recorded with a menu. It allows you to select different display menus for easy navigation.

- 1 In 'Preference Page', use ▲▼ keys to highlight { **MP3/JPEG Nav** }, then press ►.

{ **Without Menu** }

Select this to display all the files contained in the MP3/Picture CD.

{ **With Menu** }

Select this to display only the folder menu of the MP3/Picture CD.

- 2 Use ▲▼ keys to select a setting and press **OK** to confirm.

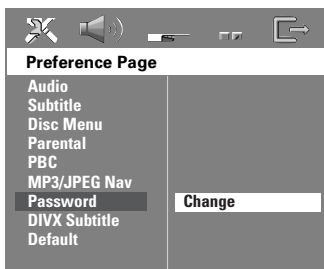
TIPS: The underlined option is the factory default setting.
To return to the previous menu, press ◀. To remove the menu, press **SETUP MENU**.

DVD Setup Menu Options (continued)

Changing the Password

The same password is used for both Parental Control and Disc Lock. Enter your six-digit password to play a prohibited disc or if prompted for a password. The default password is 136900.

- 1 In 'Preference Page', use ▲▼ keys to highlight { **Password** }, then press ► to select { **Change** }.



- 2 Press **OK** to enter the 'Password Change Page'.



- 3 Use the **numeric keypad (0-9)** to enter your old six-digit password.
→ When doing this for the first time, key in '136900'.
→ If you forget your old six-digit password, key in '136900'.
- 4 Enter the new six-digit password.
- 5 Enter the new six-digit password a second time to confirm.
→ The new six-digit password will now take effect.
- 6 Press **OK** to confirm.

Setting the DivX Subtitle font

You can set the font type that supports the recorded DivX subtitle.

- 1 In 'Preference Page', use ▲▼ keys to highlight { **DIVX Subtitle** }, then press ►.

{ **Standard** }

Select this to display a standard list of Roman subtitle fonts provided by this DVD system.

{ **Others** }

Select this to display other subtitle fonts.

- 2 Use ▲▼ keys to select a setting and press **OK** to confirm.

Restoring to original settings

You can reset all the system menu options and your personal settings to the factory defaults, except your password for Parental Control and Disc Lock.

- 1 In 'Preference Page', use ▲▼ keys to highlight { **Default** }, then press ► to select { **Reset** }.
- 2 Press **OK** to confirm.
→ All settings will now reset to factory defaults.

TIPS: The underlined option is the factory default setting.
To return to the previous menu, press ◀. To remove the menu, press **SETUP MENU**.

Tuner Operations

Tuning to radio stations

- 1 Press **SOURCE** button until "TUNER FM" appears on the display panel.
- 2 Press **▲ / ▼** briefly on the remote.
→ The display panel will show "SEARCH" until a radio station with sufficient signal strength is found.
- 3 Repeat step 2 if necessary until you find the desired radio station.
- 4 To tune to a weak station, press **◀◀◀ / ▶▶▶** briefly and repeatedly until an optimal reception is found.
- If the FM station reception is weak, press **AUDIO** to switch the FM mode from stereo to mono.

Helpful Hint:

- If the FM radio station is transmitting RDS (Radio Data System) data, the RDS name will be displayed and stored.

Presetting radio stations

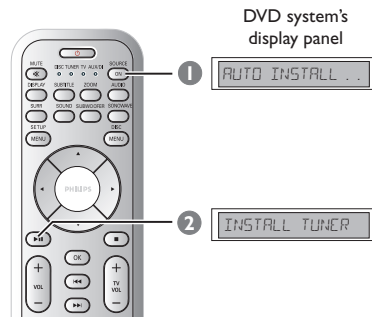
You can store up to 40 FM preset radio stations in the memory.

Helpful Hints:

- The system will exit presetting mode if no button is pressed within 20 seconds.
- If no valid frequency is detected during Plug and Play, "CHECK ANTENNA" appears.

Using the Plug and Play

Plug and Play allows you to store all available radio stations automatically.

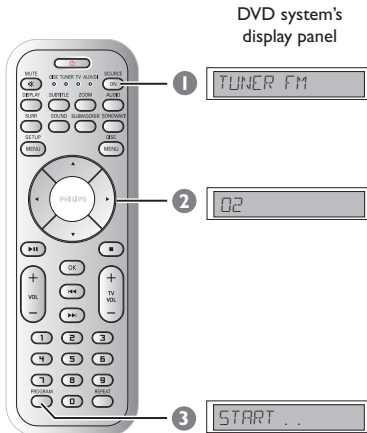


- 1 For first time setup, press **SOURCE** to select TUNER mode.
→ "AUTO INSTALL PRESS PLAY" appears.
- 2 Press and hold **▶II (PLAY PAUSE)** until "INSTALL TUNER" appears on the display panel.
→ All the available radio stations with strong signal strength will be stored automatically.
→ Once complete, the last tuned radio station will play.

Tuner Operations (continued)

Automatic presetting

Use automatic presetting to store or reinstall all the preset radio stations.



- 1 Press **SOURCE** button until "TUNER FM" appears on the display panel.
- 2 Press ◀ ▶ or use the **numeric keypad (0-9)** to select a preset number to begin.
- 3 Press and hold **PROGRAM** until "AUTO" appears.
→ If a radio station is stored in one of the earlier presets, the same radio station will not store under another preset number.
→ If no preset number is selected, automatic preset will begin from preset (1) and all your former presets will be overridden.

Manual presetting

Use manual presetting to store only your favourite radio stations.

- 1 Tune to your desired radio station (see "Tuning to radio stations").
- 2 Press **PROGRAM**.
- 3 Use ◀ ▶ keys to select a preset number that you want to store the current radio station.
- 4 Press **PROGRAM** again to store.

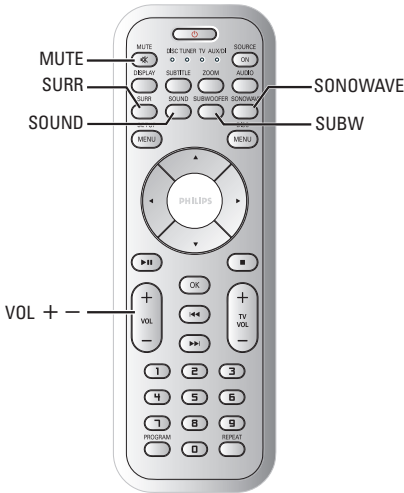
Selecting a preset radio station

- Use ◀ ▶ keys to select a preset number (or use the numeric keypad on the remote).
→ The preset number followed by radio frequency will appear.

Deleting a preset radio station

- 1 In tuner mode, use ◀ ▶ keys on the remote to select a preset radio station.
- 2 Press and hold ■ until "PRESET DELETED" appears.
→ The radio station continues to play but has been deleted from the preset list.

Sound and Volume Controls



Speakers (SonoWave) adjustment

You can adjust the SonoWave speakers setting according to your room environment and setup for optimum performance.

IMPORTANT!

The SonoWave speakers must be placed at equal distance from the TV.

- 1 Press **SONOWAVE** on the remote.
→ There are three parameters to adjust the SonoWave speakers : "ROOM ACOUSTICS", "SPEAKER DISTANCE" and "LISTENING POSITION".
- 2 Use ▲ ▼ keys to select one of the options and press **OK** to adjust the setting.

{ ROOM ACOUSTICS }

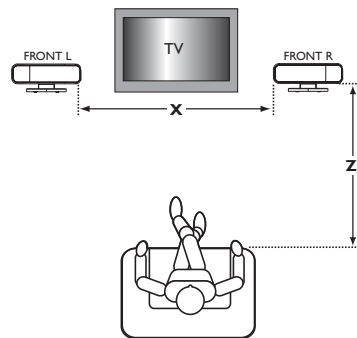
- Use ▲ ▼ keys to select the condition of the room and press **OK** to confirm.
→ "HARD" for concrete/glass walls.
→ "SOFT" for wooden walls.

{ SPEAKER DISTANCE }

- Use ▲ ▼ keys to select the distance (refer to 'X' in the below diagram) between the two SonoWave speakers and press **OK** to confirm.
→ "NEAR" - 'X' is less than 1m
→ "DEFAULT" - 'X' is between 1m to 2.5m.
→ "FAR" - 'X' is more than 2.5m.

{ LISTENING POSITION }

- Use ▲ ▼ keys to select the distance (refer to 'Z' in the below diagram) from the listening position and press **OK** to confirm.
→ "NEAR" - 'Z' is less than 1.5m
→ "DEFAULT" - 'Z' is between 1.5m to 2.5m.
→ "FAR" - 'Z' is more than 2.5m.



- 3 Press **SONOWAVE** again to exit the setting or it will exit automatically if you do not press any buttons within 10 seconds.

Sound and Volume Controls (continued)

AV subwoofer adjustment

You can adjust the AV subwoofer output level to enhance the bass output.

- 1 Start playing a music disc that has lots of mid-bass sounds, then press **SUBWOOFER** on the remote.
- 2 Press **VOL + / -** to select the desired bass level.
→ If the volume control is not used within five seconds, it will resume its normal volume control function.

Selecting surround sound

- Press **SURR (SURROUND)** to select : **MULTI-CHANNEL** or **STEREO**.
→ The availability of the various surround sound modes depends on the sound available on the disc.
→ The available output modes for Multi-channel include: Dolby Digital, DTS (Digital Theatre Systems) Surround and Dolby Pro Logic II.
→ Stereo broadcasts or recordings will produce some surround channel effects when played in a surround mode. However, mono (single channel sound) sources will not produce any sound from the surround speakers.

Helpful Hint:

– You are not able to select the surround sound mode if the system setup menu is turned on.

Selecting digital sound effects

Select a preset digital sound effects that matches your disc's content or that optimises the sound of the musical style you are playing.

- Press **SOUND** to select the available sound effect.

When playing movie discs or in TV mode, you can select :

CONCERT, DRAMA, ACTION or **SCI-FI**.

When playing music discs or while in **TUNER** or **AUX/DI** mode, you can select : **ROCK, DIGITAL, CLASSIC** or **JAZZ**.

Helpful Hint:

– For flat sound output, select **CONCERT** or **CLASSIC**.

Volume control

- Adjust **VOLUME** control (or press **VOL + / -** on the remote) to increase or decrease the volume level.
→ "**VOL MIN**" is the minimum volume level and "**VOL MAX**" is the maximum volume level.

To turn off the volume temporarily

- Press **MUTE** on the remote.
→ Playback will continue without sound and "**MUTE**" appears.
→ To restore the volume, press **MUTE** again, or increase the volume level.

Other Functions

Setting the Sleep timer

The sleep timer enables the system to switch to Eco Power standby mode automatically at a preset time.

- 1 Press and hold **OK** on the remote until "SLEEP XX" appear on the display panel (XX = 15, 30, 45, 60 or OFF).
- 2 To select the next sleep timer value, press **OK** button again while in sleep timer mode until it reaches the desired preset turn-off time.
 - 'SLEEP' will be showed on the display panel, except if "OFF" is selected.
 - Before the system switches to Eco Power standby mode, a countdown of 10 seconds is displayed.

"SLEEP 10" → "SLEEP 9" → ... →
"SLEEP 1" → "SLEEP"

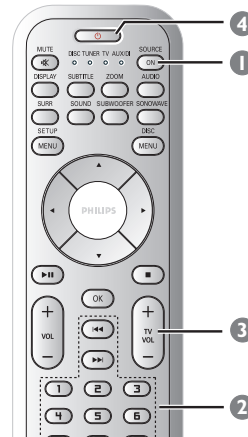
To cancel the sleep timer

- Press and hold **OK** until "OFF" appears or press the **STANDBY ON** (⏻) button.

Dimming system's display screen

- In any active mode, press and hold **DISPLAY** on the remote to select the desired brightness :
 - DIM 1 : 70% brightness
 - DIM 2 : 50% brightness
 - DIM 3 : 25% brightness
 - DIM OFF : normal brightness

Using the remote to operate your 'Philips' television



- 1 Press **SOURCE** button until "TV" appears on the display panel.
- 2 Press **◀▶** or use the **numeric keypad (0-9)** to select the TV's channel.
- 3 Press **TV VOL +/-** to adjust the TV's volume level.
- 4 Press and hold **⏻** to turn off your TV.

Specifications

AMPLIFIER SECTION

Output power	550 W RMS
Frequency Response	20 Hz – 6 kHz / –3 dB
Signal-to-Noise Ratio	> 65 dB (CCIR)
Input Sensitivity	
- AUX In	1000 mV
- DIGITAL In	1 Vpp

TUNER SECTION

Tuning Range	FM 87.5 – 108 MHz (50 kHz)
26 dB Quieting Sensitivity	FM 20 dB
Image Rejection Ratio	FM 25 dB
IF Rejection Ratio	FM 60 dB
Signal-to-Noise Ratio	FM 60 dB
AM Suppression Ratio	FM 30 dB
Harmonic Distortion	FM Mono 3% FM Stereo 3%
Frequency Response	FM 180 Hz – 10 kHz / ±6 dB
Stereo Separation	FM 26 dB (1 kHz)
Stereo Threshold	FM 23.5 dB

DISC SECTION

Laser Type	Semiconductor
Disc Diameter	12cm / 8cm
Video Decoding	MPEG-1 / MPEG-2 / MPEG-4 / DivX 3.11, 4.x & 5.x
Video DAC	12 Bits / 108 MHz
Signal System	PAL / NTSC
Video Format	4:3 / 16:9
Video S/N	56 dB (minimum)
Composite Video Output	1.0Vp-p, 75 Ω
Audio DAC	24 Bits / 96 kHz
Frequency Response	4 Hz – 20 kHz (44.1 kHz) 4 Hz – 22 kHz (48 kHz) 4 Hz – 44 kHz (96 kHz)
PCM	IEC 60958
Dolby Digital	IEC 60958, IEC 61937
DTS	IEC 60958, IEC 61937
SACD D/A converter	PCM
SACD cut-off frequency	50 kHz

MAIN UNIT

Power Supply Rating	110 – 240 V; 50 – 60 Hz
Power Consumption	14 W
Dimensions (w x h x d)	251 mm x 277 mm x 134 mm
Weight	2.8 kg

SONOWAVE SPEAKERS

System	2-way, closed box system
Impedance	6 Ω
Speaker drivers	3 x 76mm (3") woofer + 3 x 18mm (1 3/4") dome tweeter
Frequency response	120 Hz – 20 kHz
Dimensions (w x h x d)	350 mm x 140 mm x 134 mm
Weight	1.15 kg/each

AV SUBWOOFER

Power Supply Rating	110 – 240 V; 50 – 60 Hz
Power Consumption	110 W
Output Power	110 W RMS
System	Bass Reflex System
Impedance	3 Ω
Speaker drivers	165mm (6.5") woofer
Frequency response	30 Hz – 120 Hz
Dimensions (w x h x d)	600 mm x 411 mm x 216 mm
Weight	9 kg

JUNCTION BOX

Dimensions (w x h x d)	182 mm x 35 mm x 62 mm
Weight	0.27 kg

Specifications subject to change without prior notice

Troubleshooting

WARNING

Under no circumstances should you try to repair the system yourself, as this will invalidate the warranty. Do not open the system as there is a risk of electric shock.

If a fault occurs, first check the points listed below before taking the system for repair. If you are unable to remedy a problem by following these hints, consult your dealer or Philips for help.

Problem	Solution
No power.	<ul style="list-style-type: none"> – Check if the AC power cord is properly connected. – Press the STANDBY ON on the front of the DVD system to turn on the power.
No picture.	<ul style="list-style-type: none"> – Refer to your TV's manual for correct Video In channel selection. Change the TV channel until you see the DVD screen. – Press SOURCE to select disc mode. – If the progressive scan feature is activated but the connected TV does not support progressive signals or the cables are not connected accordingly, see pages 20~21 for proper progressive scan set up or deactivate the progressive scan feature as below: <ol style="list-style-type: none"> 1) Turn off your TV progressive scan mode or turn on to interlaced mode. 2) Press EJECT on the main DVD system. 3) Press ◀ on the remote control. 4) Press SUBTITLE on the remote control.
Completely distorted picture or black/white picture.	<ul style="list-style-type: none"> – If this happens when you are changing the setting of the 'TV TYPE', wait for 15 seconds for the auto recovery. – If this happens when you are turning on the progressive scan feature, wait for 15 seconds for the auto recovery. – Check the video connection. – Sometimes a small amount of picture distortion may appear. This is not a malfunction. – Clean the disc.
The aspect ratio of the screen cannot be changed even though you have set the TV display.	<ul style="list-style-type: none"> – The aspect ratio is fixed on the DVD disc. – Depending on the TV, it may not be possible to change the aspect ratio.
No sound or distorted sound.	<ul style="list-style-type: none"> – Adjust the volume. – Check the speaker connections and settings. – Make sure that the audio cables are connected and press the SOURCE button to select the correct input source (TV or AUX/DI, for example) to choose the equipment that you want to hear through the DVD system.
Cannot activate some features such as Angles, Subtitles, or multi-language Audio.	<ul style="list-style-type: none"> – The features may not be available on the DVD. – Changing the language for the sound or subtitle is prohibited on this DVD.

Need Help? Visit us at www.philips.com/support

Troubleshooting (continued)

Problem	Solution
Not able to select some Items in the setup/system menu.	<ul style="list-style-type: none"> – Press STOP button twice before selecting the setup/system menu. – Depending on the disc availability, some menu items cannot be selected.
The DVD system does not start playback.	<ul style="list-style-type: none"> – Insert a readable disc with the playback side facing down. The DVD+R/CD-R must be finalised. – Check the disc type, colour system (PAL or NTSC) and region code. – Check for any scratches or smudges on the disc. – Press SETUP MENU to turn off the setup menu screen. – You may need to enter the password in order to change the parental control rating level or to unlock the disc for playback. – Moisture may have condensed inside the system. Remove the disc and leave the system turned on for about an hour.
No surround sound effect from the SonoWave Speakers.	<ul style="list-style-type: none"> – Press SURR button to select a correct surround sound setting. – Make sure the source you are playing is recorded or broadcast in surround sound (DTS, Dolby Digital, etc.).
Radio reception is poor.	<ul style="list-style-type: none"> – If the signal is too weak, adjust the antenna or connect an external antenna for better reception. – Increase the distance between the system and your TV or VCR. – Tune in to the correct frequency. – Place the antenna further away from any equipment that may be causing the interference.
The remote control does not function properly.	<ul style="list-style-type: none"> – Select the source (DISC or TUNER, for example) before pressing the function button (▶, ◀◀, ▶▶). – Reduce the distance between the remote control and the system. – Replace the batteries with new ones. – Point the remote control directly toward the IR sensor. – Check that the batteries are loaded correctly.
Unable to play DivX movies.	<ul style="list-style-type: none"> – Check that the DivX file is encoded in 'Home Theatre' mode with DivX 5.x encoder.
The DVD system does not work.	<ul style="list-style-type: none"> – Disconnect the power cord from the power outlet for a few minutes. Reconnect the power cord and try to operate again as usual.
The disc in the disc slot cannot be ejected.	<ul style="list-style-type: none"> – Hold down the STOP button on the remote, followed by pressing number button "2", "5" and "9".

Need Help? Visit us at www.philips.com/support

Glossary

Analogue: Sound that has not been turned into numbers. Analogue sound varies, while digital sound has specific numerical values. These sockets send audio through two channels, the left and right.

Aspect ratio: The ratio of vertical and horizontal sizes of a displayed image. The horizontal vs. vertical ratio of conventional TVs is 4:3, and that of wide-screens is 16:9.

AUDIO OUT Sockets: Red and white sockets on the back of the DVD System that send audio to another system (TV, Stereo, etc.).

Bit Rate: The amount of data used to hold a given length of music; measured in kilobits per second, or kbps. Or, the speed at which you record. Generally, the higher the bit rate, or the higher the recording speed, the better the sound quality. However, higher bit rates use more space on a Disc.

Chapter: Sections of a picture or a music piece on a DVD that are smaller than titles. A title is composed of several chapters. Each chapter is assigned a chapter number enabling you to locate the chapter you want.

Component Video Out Sockets: Sockets on the back of the DVD System that send high-quality video to a TV that has Component Video In sockets (R/G/B, Y/Pb/Pr, etc.).

Disc menu: A screen display prepared for allowing selection of images, sounds, subtitles, multi-angles, etc recorded on a DVD.

DivX 3.11/4.x/5.x: The DivX code is a patent-pending, MPEG-4 based video compression technology, developed by DivXNetworks, Inc., that can shrink digital video to sizes small enough to be transported over the internet, while maintaining high visual quality.

Dolby Digital: A surround sound system developed by Dolby Laboratories containing up to six channels of digital audio (front left and right, surround left and right, centre and subwoofer).

Dolby Surround Pro Logic II: It is an improved matrix decoding technology that provides better spatiality and directionality on Dolby Surround programme material; provides a convincing three-dimensional soundfield on conventional stereo music recordings; and is ideally suited to bring the surround experience to automotive sound. While conventional surround programming is fully compatible with Dolby Surround Pro Logic II decoders, soundtracks will be able to be encoded specifically to take full advantage of Pro Logic II playback, including separate left and right surround channels. (Such material also compatible with conventional Pro Logic decoders).

DTS: Digital Theatre Systems. This is a surround sound system, but it is different from Dolby Digital. The formats were developed by different companies.

JPEG: A very common digital still picture format. A still-picture data compression system proposed by the Joint Photographic Expert Group, which features small decrease in image quality in spite of its high compression ratio.

MP3: A file format with a sound data compression system. "MP3" is the abbreviation of Motion Picture Experts Group 1 (or MPEG-1) Audio Layer 3. By using the MP3 format. One CD-R or CD-RW can contain about 10 times more data than a regular CD.

Multichannel: DVDs are formatted to have each sound track constitute one sound field. Multichannel refers to a structure of sound tracks having three or more channels.

Parental control: Limits Disc play according to the age of the users or the limitation level in each country. The limitation varies from disc to disc; when it is activated, playback will be prohibited if the software's level is higher than the user-set level.

Playback control (PBC): Refers to the signal recorded on video CDs or SVCDs for controlling playback. By using menu screens recorded on a Video CD or SVCD that supports PBC, you can enjoy interactive playback and searching.

Progressive Scan: It displays all the horizontal lines of a picture at one time, as a signal frame. This system can convert the interlaced video from DVD into progressive format for connection to a progressive display. It dramatically increases the vertical resolution.

Region code: A system allowing discs to be played only in the region designated. This unit will only play discs that have compatible region codes. You can find the region code of your unit by looking on the product label. Some discs are compatible with more than one region (or ALL regions).

Super Audio CD (SACD): This audio format is based upon the current CD standards but includes a greater amount of information that provides higher quality sound. There are three types of discs: single layer, double layer and hybrid discs. The hybrid disc contains both standard audio CD and Super Audio CD information.

Surround: A system for creating realistic three-dimensional sound fields full of realism by arranging multiple speakers around the listener.

Title: The longest section of a movie or music feature on DVD. Each title is assigned a title number, enabling you to locate the title you want.

VIDEO OUT socket: Yellow socket on the back of the DVD system that sends the DVD picture video to a TV.

Free Manuals Download Website

<http://myh66.com>

<http://usermanuals.us>

<http://www.somanuals.com>

<http://www.4manuals.cc>

<http://www.manual-lib.com>

<http://www.404manual.com>

<http://www.luxmanual.com>

<http://aubethermostatmanual.com>

Golf course search by state

<http://golfingnear.com>

Email search by domain

<http://emailbydomain.com>

Auto manuals search

<http://auto.somanuals.com>

TV manuals search

<http://tv.somanuals.com>