

Troubleshooting

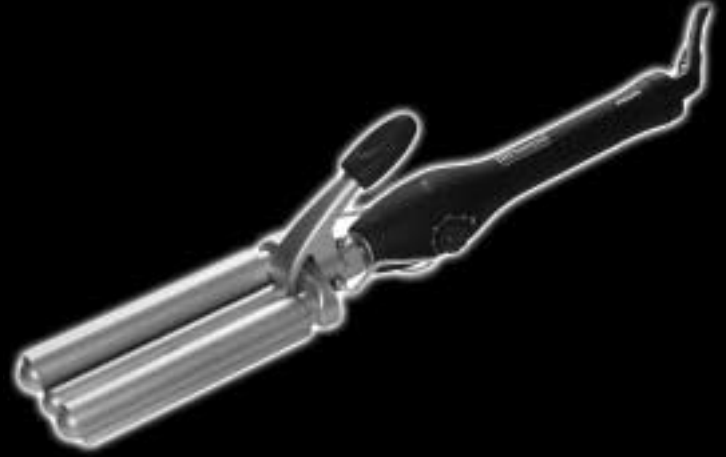
If problems should arise with your styler and you are unable to solve them by means of the troubleshooting guide below, please contact the nearest Philips service centre or the Philips Customer Care Centre in your country.

Problem

- ▶ The appliance does not work at all.
 - 1 Perhaps the socket to which the appliance has been connected is not live. Check if the power supply is working. If it is, check whether the socket is live by plugging in another appliance.
 - 2 The mains cord of the appliance may be damaged. If the mains cord is damaged, it must be replaced by Philips, a service centre authorised by Philips or similarly qualified persons in order to avoid a hazard.


TRESemmé
USED BY PROFESSIONALS


HP4655/07 SalonWaves ProCeramic



PHILIPS



www.philips.com

 100% recycled paper
100% papier recyclé

4222 002 6299 I

Introduction

This new SalonWaves ProCeramic has been specially designed to give you perfect waves in an instant, without damaging your hair. The adjustable temperature enables you to adjust the styler to your hair type. We hope you will enjoy using this styler.

Important

Read these instructions for use carefully before using the appliance and save them for future reference.

- ▶ Check if the voltage indicated on the appliance corresponds to the local mains voltage before you connect the appliance.
- ▶ Check the condition of the mains cord regularly. Do not use the appliance if the plug, the cord or the appliance itself is damaged.
- ▶ If the mains cord is damaged, it must be replaced by Philips, a service centre authorised by Philips or similarly qualified persons in order to avoid a hazard.
- ▶ Keep this appliance away from water! Do not use this product near or over water contained in baths, washbasins, sinks etc. When used in a bathroom, unplug the appliance after use since the proximity of water presents a risk, even when the appliance is switched off.
- ▶ For additional protection we advise you to install a residual current device (RCD) with a rated residual operating current not exceeding 30mA in the electrical circuit supplying the bathroom. Ask your installer for advice.
- ▶ The triple barrel and the clip of this appliance become hot during use. Prevent contact with the skin.
- ▶ Keep the appliance out of the reach of children.
- ▶ Only use the appliance on dry hair.
- ▶ Always unplug the appliance after use.
- ▶ Do not wind the mains cord round the appliance.
- ▶ Wait until the appliance has cooled down before storing it.
- ▶ Keep the barrel clean and free of dust, dirt, styling spray and gel. Never use the appliance in combination with styling mousse, styling spray, gel etc.
- ▶ Always return the appliance to a service centre authorised by Philips for examination or repair. Repair by unqualified people could cause an extremely hazardous situation for the user.
- ▶ The triple barrel has a ceramic coating. This coating will wear in the course of time. When this happens, the appliance will still function normally.

Preparing for use

Washing your hair

Everybody wants shiny and beautiful hair. A good hair-washing routine can help to achieve this.

- 1 When washing your hair, wet your hair thoroughly for 30-60 seconds.
- 2 Pour some TRESemmé shampoo into the palm of your hand. Spread it between your hands and distribute it evenly through your hair.
- 3 Gently massage your hair and scalp. Do not rough up the hair or pull long hair up onto the scalp, as this may cause tangles.
- 4 Massage your scalp with your fingertips. This stimulates blood circulation and is gentler to the hair cuticles.
- 5 Rinse your hair thoroughly, as poor rinsing can result in dull hair. Finish with a cold rinse for extra shine.
- 6 After shampooing, use TRESemmé remoisturising conditioner for detangling the hair and improving its condition.

Drying your hair

To get professional styling results, it is essential to prepare your hair for styling. Dry your hair properly with a hairdryer to ensure a professional, smooth finish.

- 1 After washing, squeeze excess water out of the hair with your hands and then towel-dry the hair.
- 2 Use a comb to disentangle hair gently from the roots to the tips.
- 3 Dry your hair by making brushing movements with the hairdryer at a small distance from your hair.
- 4 When you have finished drying, set the hairdryer to the cold setting for a final cold shot. This closes the cuticles and leaves your hair glossier.

Using the appliance

Which temperature to use

- ▶ Heat stylers are powerful styling tools and should always be used with care. If you use the styler incorrectly or if you use it at the wrong temperature, you could overheat your hair or even burn it.
 - Always select a temperature setting that is suitable for your hair type.
 - Always select a low setting when you use the styler for the first time.
 - For fine or normal hair; select a low to medium temperature (settings 1-15).
 - For thick or coarse hair; select a medium to high temperature (settings 15-30)
 - Take extra care with pale, blonde, bleached or colour-treated hair; since it will be susceptible to damage at high temperatures.

Setting the temperature

- 1 Insert the plug into the wall socket.
- 2 Switch the appliance on by turning the temperature control knob to a setting that is suitable for your hair.
- 3 The red light starts burning to indicate that the appliance is switched on.
- 4 You can adjust the temperature by turning the temperature control knob to another setting between setting 1 and 30. It will take 60-90 seconds for the styler to heat up. For optimum styling performance, let the styler continue to heat up for about 2 to 3 minutes before you start using it.

Making waves in your hair

- 1 Divide your hair into locks and put them aside with clips.
- 2 The thinner the lock of hair, the tighter the waves will get.
- 3 Take the lock you want to style and comb it first, to get rid of tangles.
 - ▶ You will achieve the best results if you work from the scalp to the ends of the hair.
- 4 Lightly clamp the hair lock close to the scalp and weave under and over the barrels.
- 5 Close the clip and hold the styler in this position for a few seconds.
- 6 Open the clip by pressing on the lever.
- 7 The waving process requires some overlapping.
- 8 When putting the appliance down, put it on its stand to avoid burn marks on your furniture. Never leave the appliance unattended when it is plugged in.

Cleaning

- 1 Switch the appliance off by turning the temperature control knob to 0 and unplug it.
- 2 Let the appliance cool down completely on its stand.
- 3 Clean the appliance with a damp cloth.
- 4 Never wind the mains cord round the appliance.

Environment

Do not throw the appliance away with the normal household waste at the end of its life, but hand it in at an official collection point for recycling. By doing this you will help to preserve the environment (fig. 1).

Guarantee & service

If you need information or if you have a problem, please visit the Philips website at www.philips.com or contact the Philips Customer Care Centre in your country (you will find its phone number in the worldwide guarantee leaflet). If there is no Customer Care Centre in your country, turn to your local Philips dealer or contact the Service Department of Philips Domestic Appliances and Personal Care BV.



Free Manuals Download Website

<http://myh66.com>

<http://usermanuals.us>

<http://www.somanuals.com>

<http://www.4manuals.cc>

<http://www.manual-lib.com>

<http://www.404manual.com>

<http://www.luxmanual.com>

<http://aubethermostatmanual.com>

Golf course search by state

<http://golfingnear.com>

Email search by domain

<http://emailbydomain.com>

Auto manuals search

<http://auto.somanuals.com>

TV manuals search

<http://tv.somanuals.com>