



SA5225BT

SA5245BT

SA5247BT

SA5285BT

SA5287BT

SA5295BT

Congratulations on your purchase  
and welcome to Philips!  
To fully benefit from the support that  
Philips offers, register your product  
at [www.philips.com/welcome](http://www.philips.com/welcome)

---

Digital audio video player

---

**PHILIPS**



# PHILIPS

## Philips Consumer Lifestyle

---

HK- 0817-SA5225BT  
(report No.)

### EC DECLARATION OF CONFORMITY

We,

Philips Consumer Lifestyle  
(manufacturer's name)

Philips, Glaslaan 2, 5616 JB Eindhoven, The Netherlands  
(manufacturer's address)

declare under our responsibility that the electrical product:

Philips  
(name)

SA5225BT/00, /02  
(type or model)

Digital Audio Player  
(product description)

to which this declaration relates is in conformity with the following standards:

EN55013: 2001 + adm. A1: 2003 + adm. A2: 2006 + EN55020: 2002 + adm. A1: 2003 +  
adm. A2: 2005 + EN55022: 2006 + EN55024: 1998 + adm. A1: 2001 + adm. A2: 2003 +  
EN61000-4-5: 2001 + EN61000-4-11: 2004 + EN61000-3-2: 2000 + adm. A2: 2005 +  
EN61000-3-3: 1995 + adm. A1: 2001 + adm. A2: 2005 + ETSI EN300 328 V1.7.1: 2006 +  
ETSI EN301 489-17 V1.2.1: 2002 + ETSI EN301 489-1 V1.6.1: 2005 + EN 50371: 2002 +  
EN60950-1: 2006 + EN50332-1: 2000  
(title and/or number and date of issue of the standards)

following the provisions of 99/5/EC & 2004/108EC & 2006/95/EC directives

and are produced by a manufacturing organization on ISO 9000 level.

Leuven, April 25, 2008  
(place, date)

Frank Dethier  
Development Manager  
Innovation Lab Leuven  
Philips Consumer Lifestyle  
(signature, name and function)



# PHILIPS

## Philips Consumer Lifestyle

---

HK- 0817-SA5245BT  
(report No.)

### EC DECLARATION OF CONFORMITY

We,

Philips Consumer Lifestyle  
(manufacturer's name)

Philips, Glaslaan 2, 5616 JB Eindhoven, The Netherlands  
(manufacturer's address)

declare under our responsibility that the electrical product:

Philips  
(name)

SA5245BT/00, /02  
(type or model)

Digital Audio Player  
(product description)

to which this declaration relates is in conformity with the following standards:

EN55013: 2001 + adm. A1: 2003 + adm. A2: 2006 + EN55020: 2002 + adm. A1: 2003 +  
adm. A2: 2005 + EN55022: 2006 + EN55024: 1998 + adm. A1: 2001 + adm. A2: 2003 +  
EN61000-4-5: 2001 + EN61000-4-11: 2004 + EN61000-3-2: 2000 + adm. A2: 2005 +  
EN61000-3-3: 1995 + adm. A1: 2001 + adm. A2: 2005 + ETSI EN300 328 V1.7.1: 2006 +  
ETSI EN301 489-17 V1.2.1: 2002 + ETSI EN301 489-1 V1.6.1: 2005 + EN 50371: 2002 +  
EN60950-1: 2006 + EN50332-1: 2000  
(title and/or number and date of issue of the standards)

following the provisions of 99/5/EC & 2004/108EC & 2006/95/EC directives

and are produced by a manufacturing organization on ISO 9000 level.

Leuven, April 25, 2008  
(place, date)

Frank Dethier  
Development Manager  
Innovation Lab Leuven  
Philips Consumer Lifestyle  
(signature, name and function)



# PHILIPS

## Philips Consumer Lifestyle

---

HK- 0817-SA5285BT  
(report No.)

### EC DECLARATION OF CONFORMITY

We,

Philips Consumer Lifestyle  
(manufacturer's name)

Philips, Glaslaan 2, 5616 JB Eindhoven, The Netherlands  
(manufacturer's address)

declare under our responsibility that the electrical product:

Philips  
(name)

SA5285BT/00, /02  
(type or model)

Digital Audio Player  
(product description)

to which this declaration relates is in conformity with the following standards:

EN55013: 2001 + adm. A1: 2003 + adm. A2: 2006 + EN55020: 2002 + adm. A1: 2003 +  
adm. A2: 2005 + EN55022: 2006 + EN55024: 1998 + adm. A1: 2001 + adm. A2: 2003 +  
EN61000-4-5: 2001 + EN61000-4-11: 2004 + EN61000-3-2: 2000 + adm. A2: 2005 +  
EN61000-3-3: 1995 + adm. A1: 2001 + adm. A2: 2005 + ETSI EN300 328 V1.7.1: 2006 +  
ETSI EN301 489-17 V1.2.1: 2002 + ETSI EN301 489-1 V1.6.1: 2005 + EN 50371: 2002 +  
EN60950-1: 2006 + EN50332-1: 2000  
(title and/or number and date of issue of the standards)

following the provisions of 99/5/EC & 2004/108EC & 2006/95/EC directives

and are produced by a manufacturing organization on ISO 9000 level.

Leuven, April 25, 2008  
(place, date)

Frank Dethier  
Development Manager  
Innovation Lab Leuven  
Philips Consumer Lifestyle  
(signature, name and function)

# Need help?

Please visit

[www.philips.com/welcome](http://www.philips.com/welcome)

where you can access a full set of supporting materials such as user manual, the latest software updates and answers to frequently asked questions.

# Contents

|       |   |    |
|-------|---|----|
| 1     | Important safety information  | 3  |
| 2     | Your new player   | 8  |
| 2.1   | What's in the box   | 8  |
| 2.2   | Register your product   | 8  |
| 3     | Getting started   | 9  |
| 3.1   | Overview of controls and connections                                | 9  |
| 3.2   | Main menu   | 10 |
| 3.3   | Install   | 10 |
| 3.4   | Connect and charge  | 11 |
| 3.4.1 | Use the supplied USB cable  | 11 |
| 3.4.2 | Battery level indication  | 11 |
| 3.5   | Transfer music and pictures   | 12 |
| 3.6   | Download, convert & transfer videos with MediaConverter™            | 12 |
| 3.6.1 | Download or add videos to MediaConverter™                           | 13 |
| 3.6.2 | Convert and transfer videos with MediaConverter™                    | 14 |
| 3.7   | Enjoy   | 15 |
| 3.7.1 | Turn on and off   | 15 |
| 3.7.2 | Navigate the menu   | 15 |
| 3.7.3 | Lock slider   | 15 |
| 3.8   | Connect Bluetooth® headphones (or other Bluetooth® devices)         | 16 |
| 4     | Organize and transfer music and pictures with Rhapsody Media Player | 18 |
| 4.1   | Install Rhapsody Media Player                                       | 18 |
| 4.1.1 | View subscription status  | 18 |
| 4.2   | Add your music to the player  | 19 |
| 4.3   | Add Rhapsody Music to the player                                    | 21 |
| 4.4   | Add Rhapsody Music Channels to the player                           | 22 |
| 4.5   | Transfer picture files to the player with Rhapsody Media Player     | 23 |
| 5     | Detailed operation  | 24 |
| 5.1   | Music mode  | 24 |
| 5.1.1 | Control   | 24 |
| 5.1.2 | Find your music   | 25 |
| 5.1.3 | Find your Rhapsody Channels   | 26 |
| 5.1.4 | Adding music from your Rhapsody Channels to the player library      | 26 |
| 5.1.5 | Limit the volume  | 27 |
| 5.1.6 | Resume play (Now playing)   | 27 |

# Contents

|       |   |    |
|-------|---|----|
| 5.2   | Picture library   | 28 |
| 5.2.1 | View pictures   | 28 |
| 5.2.2 | Adding pictures to folder 'Favorites'                   | 28 |
| 5.2.3 | Slideshow   | 28 |
| 5.3   | Video   | 29 |
| 5.3.1 | Transfer videos from a computer to the player           | 29 |
| 5.3.2 | Video play  | 29 |
| 5.3.3 | Fast forward / backward control                         | 29 |
| 5.4   | Radio   | 30 |
| 5.4.1 | Automatic tuning of radio stations                      | 30 |
| 5.4.2 | RDS (Radio Data System)                                 | 30 |
| 5.4.3 | Play a preset radio station                             | 30 |
| 5.4.4 | Manually tune a radio station                           | 30 |
| 5.4.5 | Manually save a radio station to a preset               | 31 |
| 5.5   | Recordings  | 32 |
| 5.5.1 | Play recordings   | 32 |
| 5.5.2 | Upload recordings to the computer                       | 32 |
| 5.5.3 | Delete recordings                                       | 33 |
| 5.6   | Use your player to store and carry data files           | 33 |
| 6     | Play music or videos with Bluetooth®                    | 34 |
| 6.1   | Play audio or video on another Bluetooth® output device | 34 |
| 7     | Settings  | 36 |
| 7.1   | Equalizer custom settings                               | 37 |
| 8     | Update your player                                      | 38 |
| 8.1   | Perform a software update                               | 38 |
| 9     | Technical data  | 39 |
| 10    | Frequently asked questions                              | 41 |

# 1 Important safety information

## General maintenance

### To avoid damage or malfunction:

- Do not expose the player to excessive heat caused by heating equipment or direct sunlight.
- Do not drop your player or allow objects to fall on your player.
- Do not allow your player to be submerged in water. Do not expose headphone socket or battery compartment to water, as water entering the set may cause major damage.
- Do not use any cleaning agents containing alcohol, ammonia, benzene, or abrasives as these may harm the set.
- Active mobile phones in the vicinity may cause interference.
- Back up your files. Please ensure that you retain the original files you have downloaded to your device. Philips is not responsible for any loss of data if the product becomes damaged or not readable / legible.
- Manage (transfer, delete, etc.) your music files only with the supplied music software to avoid problems!

### About operating and storage temperatures

- Operate in a place where temperature is always between 0 and 35°C (32 to 95°F)
- Store in a place where temperature is always between -20 and 45°C (-4 to 113°F)
- Battery life may be shortened in low temperature conditions.

### Replacement parts/accessories

Visit [www.philips.com/support](http://www.philips.com/support) to order replacement parts/accessories.

## Hearing Safety

### Listen at a moderate volume.

- Using headphones at a high volume can impair your hearing. This product can produce sounds in decibel ranges that may cause hearing loss for a normal person, even for exposure less than a minute. The higher decibel ranges are offered for those that may have already experienced some hearing loss.
- Sound can be deceiving. Over time your hearing “comfort level” adapts to higher volumes of sound. So after prolonged listening, what sounds “normal” can actually be loud and harmful to your hearing. To guard against this, set your volume to a safe level before your hearing adapts and leave it there.



### To establish a safe volume level:

- Set your volume control at a low setting.
- Slowly increase the sound until you can hear it comfortably and clearly, without distortion.

### Listen for reasonable periods of time:

- Prolonged exposure to sound, even at normally “safe” levels, can also cause hearing loss.
- Be sure to use your equipment reasonably and take appropriate breaks.



## Be sure to observe the following guidelines when using your headphones.

- Listen at reasonable volumes for reasonable periods of time.
- Be careful not to adjust the volume as your hearing adapts.
- Do not turn up the volume so high that you can't hear what's around you.
- You should use caution or temporarily discontinue use in potentially hazardous situations.
- Do not use headphones while operating a motorized vehicle, cycling, skateboarding, etc.; it may create a traffic hazard and is illegal in many areas.

### Important (for models supplied with headphones):

Philips guarantees compliance with the maximum sound power of its audio players as determined by relevant regulatory bodies only with the original model of provided headphones. In case this one needs replacement, we recommend that you contact your retailer to order a model identical to that of the original, provided by Philips.

## Copyright information

All other brands and product names are trademarks of their respective companies or organizations.

Unauthorized duplication of any recordings whether downloaded from the Internet or made from audio CDs is a violation of copyright laws and international treaties.

The making of unauthorized copies of copy-protected material, including computer programmes, files, broadcasts and sound recordings, may be an infringement of copyrights and constitute a criminal offence. This equipment should not be used for such purposes.

This product is protected by certain intellectual property rights of Microsoft Corporation. Use or distribution of such technology outside of this product is prohibited without a license from Microsoft or an authorized Microsoft subsidiary.

Content providers are using the digital rights management technology for Windows Media contained in this device ("WM-DRM") to protect the integrity of their content ("Secure Content") so that their intellectual property, including copyright, in such content is not misappropriated. This device uses WM-DRM software to play Secure Content ("WM-DRM Software"). If the security of the WM-DRM Software in this device has been compromised, Microsoft may revoke (either on its own or upon the request of the owners of Secure Content ("Secure Content Owners")) the WM-DRM Software's right to acquire new licenses to copy, display and/or play Secure Content. Revocation may also prevent your device's ability to transfer, store, copy, display and/or play Secure Content which you have previously stored on your Device. Revocation does not alter the WM-DRM Software's ability to play unprotected content. A list of revoked WM-DRM Software is sent to your device whenever you download a license for Secure Content from the Internet or from a PC. Microsoft may, in conjunction with such license, also download revocation lists onto your device on behalf of Secure Content Owners, which may disable your device's ability to copy, display and/or play Secure Content.

In the event of revocation, Philips will attempt to make available software updates to restore some or all of your device's ability to transfer, store, access, copy, display and/or play Secure Content. However, the ability to make such updates available does not rest solely with Philips. Philips does not guarantee that, after revocation, such software updates will be available. If such updates are not available, your device will not have the ability to transfer, store, copy, display and/or play Secure Content - even Secure Content which you have previously stored on your device.

In addition, even if such software updates are available, they may not enable your Device to transfer, store, copy, display, and/or play Secure Content which was previously stored on your Device. In some cases you may be able to transfer the content from the PC. In other cases, you may have to repurchase previously obtained Secure Content.

To summarize - Microsoft, Secure Content Owners, and Secure Content distributors may deny you access, or restrict your access, to Secure Content. They may also disable your device's ability to transfer, store, copy, display and/or play Secure Content even after you have paid for and obtained it. Neither your consent nor the consent or approval of Philips is necessary for any of them to deny, withhold or otherwise restrict your access to Secure Content or to disable your device's ability to transfer, store, access, copy, display, and/or play Secure Content. Philips does not guaranty that you will be able to transfer, store, access, copy, display, and/or play Secure Content.

The Windows Media and the Windows logo are registered trademarks of Microsoft Corporation in the United States and/or other countries.

## Be Responsible! Respect Copyrights.



Philips respects the intellectual property of others, and we ask our users to do the same.

Multimedia content on the internet may have been created and/or distributed without the original copyright owner's authorization.

Copying or distributing unauthorized content may violate copyright laws in various countries including yours.

Compliance with copyright laws remains your responsibility.

The recording and transfer to the portable player of video streams downloaded to your computer is intended only for use with public domain or properly licensed content. You may only use such content for your private, non-commercial use and shall respect eventual copyright instructions provided by the copyright owner of the work. Such instruction may state that no further copies shall be made. Video streams may include copy protection technology that prohibits further copying. For such situations the recording function will not work and you will be notified with a message.

## Data logging

Philips is committed to improving the quality of your product and enhancing the Philips user experience. To understand the usage profile of this device, this device logs some info / data to the non-volatile memory region of the device. These data are used to identify and detect any failures or problems you as a user may experience while using the device. The data stored, for example, will be the duration of playback in music mode, duration of playback in turner mode, how many times battery low was encountered, etc. The data stored do not reveal the content or media used on the device or the source of downloads. The data stored on the device are retrieved and used **ONLY** if the user returns the device to the Philips service centre and **ONLY** to simplify error detection and prevention. The data stored shall be made available to user on user's first request.

## Disposal of your old product



Your product is designed and manufactured with high quality materials and components, which can be recycled and reused.

When this crossed-out wheeled bin symbol is attached to a product, it means the product is covered by the European Directive 2002/96/EC.

Please be informed about the local separate collection system for electrical and electronic products.

Please act according to your local rules and do not dispose of your old product with your normal household waste. The correct disposal of your old product will help prevent potential negative consequences to the environment and human health.

The build-in rechargeable battery contains substances that may pollute the environment. Always hand the appliance in at an official collection point to remove the battery before discarding the appliance. Battery should be disposed of at an official collection point.

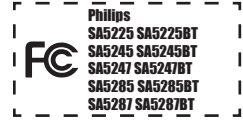
## Modifications

Modifications not authorized by the manufacturer may void user authority to operate this device.

# Notice for USA

Note:

This equipment has been tested and found to comply with the limits for a Class B digital device, pursuant to part 15 of the FCC Rules. These limits are designed to provide reasonable protection against harmful interference in a residential installation. This equipment generates, uses, and can radiate radio frequency energy and, if not installed and used in accordance with the instruction manual, may cause harmful interference to radio communications.



However, there is no guarantee that interference will not occur in a particular installation. If this equipment does cause harmful interference to radio or television reception, which can be determined by turning the equipment off and on, the user is encouraged to try to correct the interference by one or more of the following measures:

- Relocate the receiving antenna.
- Increase the separation between equipment and receiver.
- Connect the equipment into an outlet on a circuit different from that to which the receiver is connected.
- Consult the dealer or an experienced radio/TV technician for help.

# Notice for Canada

This Class B digital apparatus complies with Canadian ICES-003. The set complies with the FCC-Rules, Part-15 and with 21 CFR 1040.10. Operation is subject to the following two conditions:

- This device may not cause harmful interference, and
- This device must accept any interference received, including interference that may cause undesired operation.

# Notice for the European Union

This product complies with the radio interference requirements of the European Union.

# 2 Your new player

With your newly purchased player, you can enjoy the following:

- Stream audio using *Bluetooth*<sup>®</sup>\*
- Play video files (WMV, MPEG4 (.avi))
- Play audio files (MP3, WMA)
- Display album art
- View pictures
- Listen to FM radio
- Record FM radio<sup>1</sup> and voices / sounds
- View folders

## 2.1 What's in the box

The following accessories are included with your player:



Player



Earphones with exchangeable caps



USB cable



Protective pouch



Quick start guide



CD-ROM containing Rhapsody Media Player, Philips Device Manager, MediaConverter™ for Philips, User Manual and Frequently Asked Questions

## 2.2 Register your product

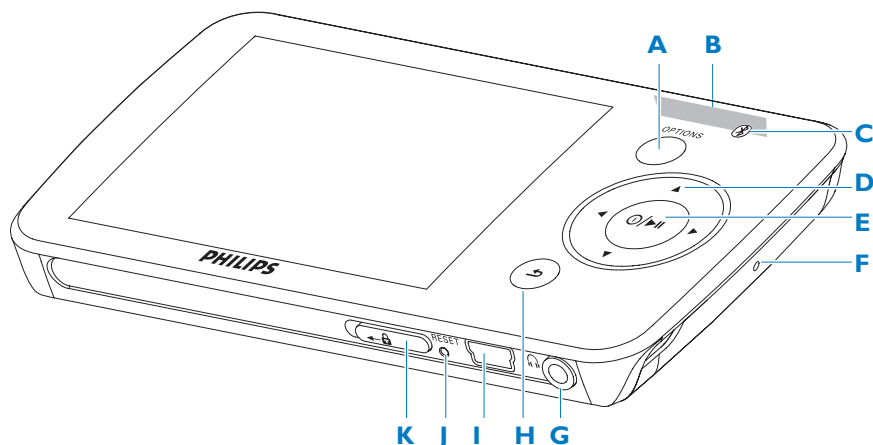
We strongly recommend that you register your product in order to gain access to free updates. To register your product, please log on to [www.philips.com/welcome](http://www.philips.com/welcome) so that we can inform you as soon as new updates become available.

<sup>1</sup> FM radio recording: This feature is available for all regions except USA and Canada.

\* The Bluetooth<sup>®</sup> word mark and logos are registered trademarks owned by Bluetooth SIG, Inc. and any use of such marks by Philips is under license. Other trademarks and trade names are those of their respective owners.









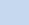
# 3 Getting started

## 3.1 Overview of controls and connections



|          |                   |   |
|----------|-------------------|---|
| <b>A</b> | <b>OPTIONS</b>    | Offers a selection of options, depending on the current menu          |
| <b>B</b> | <b>-VOLUME+</b>   | Increases/decreases volume (hold to increase/decrease fast)           |
| <b>C</b> | <b>Bluetooth®</b> | Bluetooth® indicator  |
| <b>D</b> | <b>◀ ▶</b>        | Skips back (hold to quick skip)<br>Skips forward (hold to quick skip) |
|          | <b>▲/▼</b>        | Scrolls up/down (hold to quick scroll)                                |
| <b>E</b> | <b>⏵ / ▶▶</b>     | On / Off<br>Play/Record / Pause<br>Confirm selection                  |
| <b>F</b> | <b>MIC</b>        | Microphone  |
| <b>G</b> | <b>🎧</b>          | Headphones jack   |
| <b>H</b> | <b>↶</b>          | Back one level (hold to return to root menu)                          |
| <b>I</b> | <b>🔌</b>          | USB connector   |
| <b>J</b> | <b>Reset</b>      |   |
| <b>K</b> | <b>🔒 slider</b>   | Hold slider to lock/unlock all keys (except <b>-VOLUME+</b> )         |

## 3.2 Main menu

| Menu  | To                                    |
|---|---------------------------------------|
|  Music              | Play digital music tracks             |
|  Rhapsody Channels* | Listen to Rhapsody Music Channels     |
|  Video              | Watch videos                          |
|  Pictures           | View pictures                         |
|  Radio              | Listen to FM radio                    |
|  Recordings         | Create or listen to recordings        |
|  Folder view        | View folders                          |
|  Settings           | Customize the settings of your player |
|  Now playing        | Go to the play screen                 |
|  Last played        | Resume play                           |


\* *Rhapsody Music Channels are 'Virtual' radio stations and are only available after active Rhapsody Music Channel content is transferred to the player.*

## 3.3 Install


 **Important** Make sure to install the software provided in the supplied CD for music and video transfer.

System requirements:

- Windows XP (SP2 or above) or Vista
- Pentium III 800MHz processor or higher
- 128MB RAM
- 500MB hard disk space
- Internet connection
- Microsoft Internet Explorer 6.0 or later
- CD-ROM
- USB port

 **Important** You need **Windows XP Service Pack 2** to install and run this software. In case you do not have this on your PC, you will be asked to install the Service Pack. Please do install this, complete the rest of your software installation and only then connect your device. This is critical to ensure the proper working of your player when connected to the PC.

- 1 Insert the CD supplied with your product into the CD ROM drive of your PC.
- 2 Follow the on-screen instructions to complete the installation of **Rhapsody Media Player, Philips Device Manager** and **MediaConverter™ for Philips**. The MediaConverter™ for Philips converts video clips into suitable formats for the player.
- 3 If the installation program does not start automatically, browse the CD contents with **Windows Explorer** and double click on the file ending with .exe.

 **Important** To use the Stream Ripper feature and avoid download error messages, install the 'FLV codec' on your PC. (Tip: If you enter 'download FLV codec' in your Internet search engine, you can find websites that offer a download of the FLV codec.)

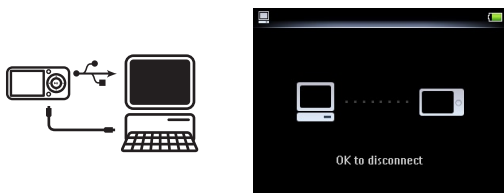
Lost your CD? Don't worry, you can download the CD contents from [www.philips.com/support](http://www.philips.com/support).

## 3.4 Connect and charge


When you connect the player to the PC, it automatically charges.

### 3.4.1 Use the supplied USB cable

- 1 Before you use the player for the first time, charge it for at least 5 hours.
  - > The battery<sup>2</sup> has a 100% charge after 4 hours and an 80% charge after 2 hours.




- 2 Connect the supplied USB cable to the mini USB port at the bottom of the player, the other end to your PC.
  - > The player will start to charge as soon as it is connected to your PC.

**Note** The player is fully charged when the charging animation stops and  is displayed. Your fully charged player will allow up to 30 hours<sup>2</sup> of music playback.

### 3.4.2 Battery level indication

The approximate power levels of your battery are indicated as follows:



**Note** When the batteries are almost empty, the battery screen  blinks. The player saves all settings and unfinished recordings and switches off in less than 60 seconds.

<sup>2</sup> Rechargeable batteries have a limited number of charge cycles. Battery life and number of charge cycles vary by use and settings.



## 3.5 Transfer music and pictures

You can transfer music and picture files to your player using Rhapsody Media Player. See **4 Organize and transfer pictures and music with Rhapsody Media Player** section of the user manual for more details.

## 3.6 Download, convert & transfer videos with MediaConverter™

### ! Important

DRM protected videos that you have downloaded (purchased) from the Internet must have a bit rate of  $\leq 800$  kbps so you can transfer them to the player.

Before you transfer DRM protected videos, ensure that you can play them on your PC. You can transfer DRM protected video files by dragging and dropping them into the Video folder of the device using Internet Explorer.

! **Important** To use the Stream Ripper feature and avoid download error messages, install the 'FLV codec' on your PC. (Tip: If you enter 'download FLV codec' in your Internet search engine, you can find websites that offer a download of the FLV codec.)



**MediaConverter™ for Philips** enables you to

- download videos from the Internet to your PC at the click of a button (**Stream Ripper\***),
- convert video files on your PC to the correct screen size for your player,
- transfer converted videos from your PC to your player.

☰ **Note** Video conversion and transfer is usually a long process and dependent on your PC configuration.


## 3.6.1 Download or add videos to MediaConverter™

### 3.6.1.1 Download videos with Stream Ripper\*

- 1 Use the **Internet Explorer** to open the website from where you want to download the video.

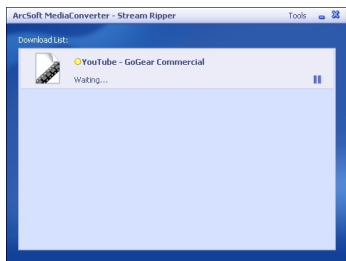
The Stream Ripper software supports downloads from the following websites:

- video.google.com
- myspace.com
- youtube.com

- 2 While playing the video on the website, move your mouse cursor over the video until you see the Stream Ripper icon  **Download** in the top left hand side corner; then click **Download**.



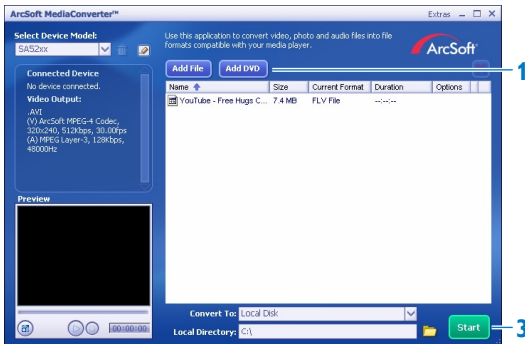
- > When the video is downloaded the MediaConverter™ opens and shows the downloaded video.



\* The **Stream Ripper** download feature requires that the **FLV codec** is installed on your PC. For more information read chapter **Install** in this user manual.

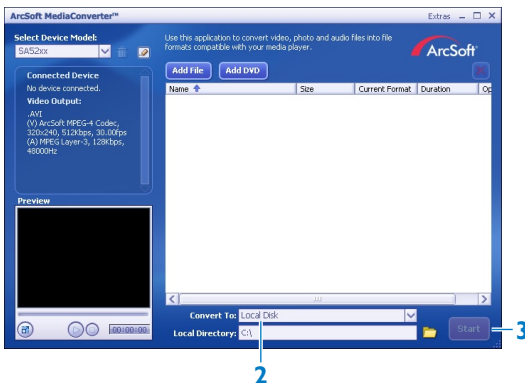
### 3.6.1.2 Add video files from your PC or DVD

- 1 In the **MediaConverter™** window, click **Add File / Add DVD** to select the source of your video.
- 2 In the **pop-up window**, mark your video file, then click **Open**.
- 3 In the **MediaConverter™** window, click **Start** to start the conversion and transfer of the video.

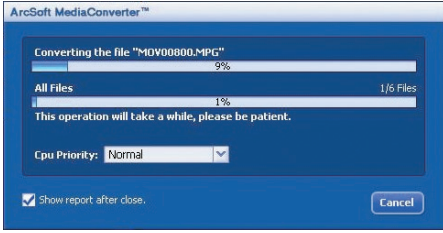


### 3.6.2 Convert and transfer videos with MediaConverter™

- 1 Follow section 3.6.1.1 or 3.6.1.2 to download or add a video.
- 2 In the **MediaConverter™** window, select the destination for the video (your Philips player or local disk).
- 3 In the **MediaConverter™** window, click **Start** to start the conversion and transfer of the video.



- > The progress of conversion and transfer is shown.  
All the converted files will be transferred to the player.



**Tip** You can also select the files in **Windows Explorer** and then drag and drop them into the **MediaConverter™ for Philips** screen.

**Note** If needed, the files will first be converted to a format that can be played on the player.

## 3.7 Enjoy

### 3.7.1 Turn on and off

To turn on, press **⏪/▶** until the display shows the Philips logo.

To turn off, press and hold **⏪/▶** until the display shows 'Bye'.

**Tip** If the player is in stop mode and no button is pressed for 10 minutes, it switches off automatically.

### 3.7.2 Navigate the menu

Your player has an intuitive menu navigation system to guide you through various settings and operations.

| Goal                    | Action                     |
|-------------------------|----------------------------|
| Return to previous menu | Press <b>⏪</b>             |
| Return to main menu     | Press and hold <b>⏪</b>    |
| Browse through menus    | Press <b>▶</b> or <b>⏪</b> |
| Scroll through a list   | Press <b>▲</b> or <b>▼</b> |
| Select an option        | Press <b>▶</b>             |

### 3.7.3 Lock slider

The player has a lock switch to prevent any accidental operation.

- To lock the buttons when you play, move the lock slider to position **🔒**.
  - > All buttons except **-VOL+** are locked and the display shows **🔒**.
- To unlock the buttons again, move the lock slider to position **🔓**

## 3.8 Connect *Bluetooth*<sup>®</sup> headphones (or other *Bluetooth*<sup>®</sup> devices)

You can connect to any kind of *Bluetooth*<sup>®</sup> enabled product supporting stereo audio streaming, such as headphones, audio systems, or portable speakers. The following steps explain how to connect the player to a new device:

- 1 On the Home menu, select **Settings**.
- 2 Press ▲ or ▼ and ►|| to select the option **Bluetooth**.



- 3 Select **Turn on Bluetooth** to activate the *Bluetooth*<sup>®</sup> feature of the player.



- 4 Press ▲ or ▼ and ►|| to select **Connect to ...**



> The list shows option *New Device* as well as already paired devices.

- 5 Press ▲ or ▼ and ►|| to select **New Device**.
  - > The player searches and then displays the list of found devices.
- 6 Select the device you want to connect to.

7 Enter the passcode of the other device if necessary.

> A confirmation message appears upon successful connection.

 **Tip**

You can also transfer music to another *Bluetooth*<sup>®</sup> enabled device while listening to music on *Bluetooth*<sup>®</sup> enabled headphones. Refer to chapter **6 Play music or videos with Bluetooth<sup>®</sup>**.

When you tick the box **Show Device to Others** in the *Bluetooth*<sup>®</sup> settings menu, you make the player visible to other *Bluetooth*<sup>®</sup> devices.





# 4 Organize and transfer music and pictures with Rhapsody Media Player

## 4.1 Install Rhapsody Media Player

Install the Rhapsody Media Player from the supplied software CD. (See section **3.3 Install** for more details).

### 4.1.1 View subscription status

You can view your Rhapsody subscription status at the bottom of the display, next to the battery level indicator:

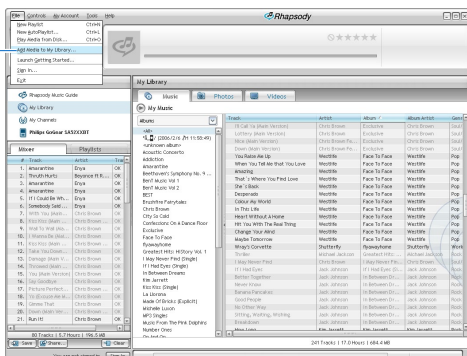
-  Currently licensed Rhapsody account
-  Rhapsody account subscription expires in 7 days
-  Rhapsody account subscription expires in 2 days
-  No Rhapsody account subscription (or subscription is invalid / expired)

 **Tip** You can check the status of your Rhapsody account in the Settings menu of your player; or visit the Internet at [www.Rhapsody.com](http://www.Rhapsody.com).

## 4.2 Add your music to the player

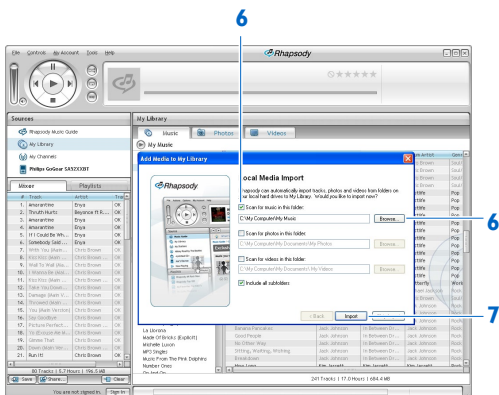
You can add the music that is stored on your PC. For more information visit [www.Rhapsody.com](http://www.Rhapsody.com).

- 1 Ensure the computer is connected to the Internet.
- 2 Connect the player to the computer.
- 3 Launch the **Rhapsody Media Player**.
- 4 In the sources window on the left hand side of the screen, select **My Library**.
- 5 On the toolbar at the top, select the pull-down menu **File** and select **Add Media to My Library...**





6 In the pop-up window, check the box next to **Scan for music in this folder:**.



> By default, the pop-up window shows the music in the **My Music** folder on your computer.

Click **Browse...** to find the folder with your music, if it is different from the pre-selected folder.

7 Click **Import**.

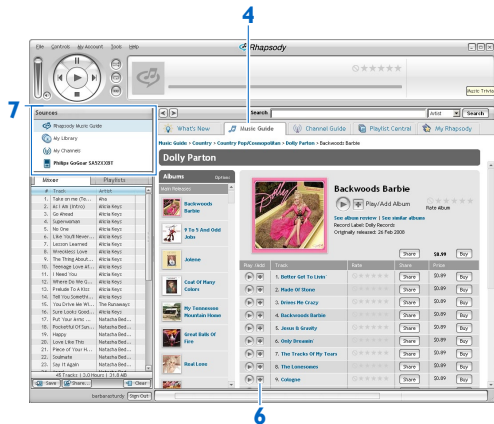
> All music in the selected folder is imported into **My Library**.

8 To transfer the music files to your player, drag and drop the files from the main window to the player icon in the **Sources** window.

## 4.3 Add Rhapsody Music\* to the player

Depending on the type of Rhapsody account you hold, you can add Rhapsody Music to the player using. For more information visit [www.Rhapsody.com](http://www.Rhapsody.com).

- 1 Ensure the computer is connected to the Internet.
- 2 Connect the player to the computer.
- 3 Launch the **Rhapsody Media Player**.



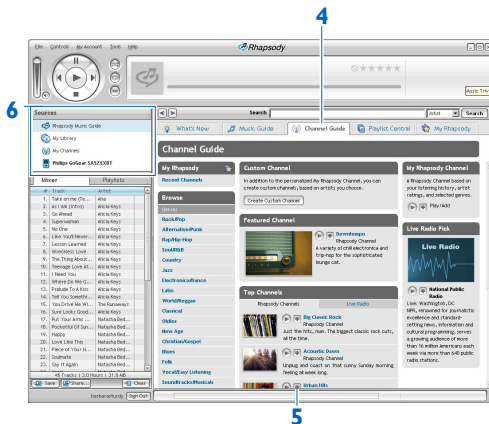
- 4 In the main window, select the tab **Music Guide**.
- 5 In the main window, select an album and song title.
- 6 In the main window, click the **+** icon to add the title to **My Library**.
- 7 In the **Sources** window, select **My Library**.
- 8 From the main window, drag and drop your music to the player icon in the **Sources** window.

\* This feature is available only for music that you purchased through Rhapsody.

## 4.4 Add Rhapsody Music Channels\* to the player

Depending on the type of Rhapsody account you hold, you can add Rhapsody Music Channels to the player using. For more information visit [www.Rhapsody.com](http://www.Rhapsody.com)

- 1 Ensure the computer is connected to the Internet.
- 2 Connect the player to the computer.
- 3 Launch the **Rhapsody Media Player**.
  - > The player is shown in the **Sources** window on the left hand side of the screen.



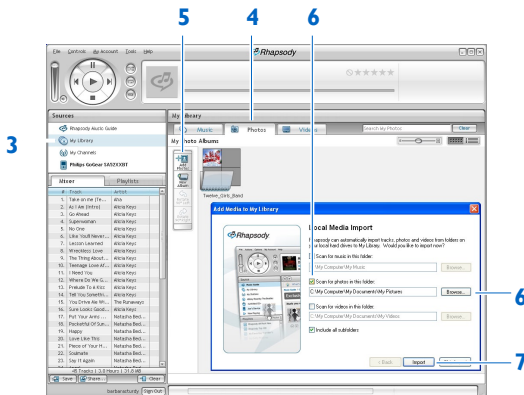
- 4 In the main window, select the tab **Channel Guide**.
- 5 In the main window, click on the **+** icon to add a channel to **My Channels**.
- 6 In the **Sources** window, select **My Channels**.
  - > The main window shows a list of your channels.
- 7 Drag and drop your channels to the player icon in the **Sources** window.

\* This feature is available only if you subscribe to Rhapsody Music Channels.

## 4.5 Transfer picture files to the player with Rhapsody Media Player

You can transfer picture files to your player using Rhapsody Media Player.

- 1 Connect the player to the computer.
- 2 Launch the **Rhapsody Media Player**.
  - > The player is shown in the **Sources** window on the left hand side of the screen.



- 3 In the **Sources** window, select **My Library**.
  - 4 In the main window, click on a tab to select **Photos**.
  - 5 To add pictures from a different folder on your computer, click on the **Add Photos** icon.
  - 6 In the **Add Media to My Library** pop-up window, check the box next to **Scan for photos in this folder**.
    - > By default, the pop-up window shows the pictures in the **My Pictures** folder on your computer.
- Click **Browse...** to find the folder with your pictures, if it is different from the pre-selected folder.
- 7 Click **Import**, to import the selected folder to My Library.
  - 8 To transfer the picture files to your player, drag and drop the files from the main window to the player icon in the **Sources** window.

# 5 Detailed operation

## 5.1 Music mode (also play mode for recordings)

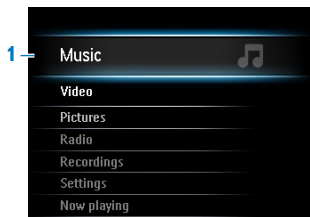
Your player supports MP3 and WMA formats.


### 5.1.1 Control

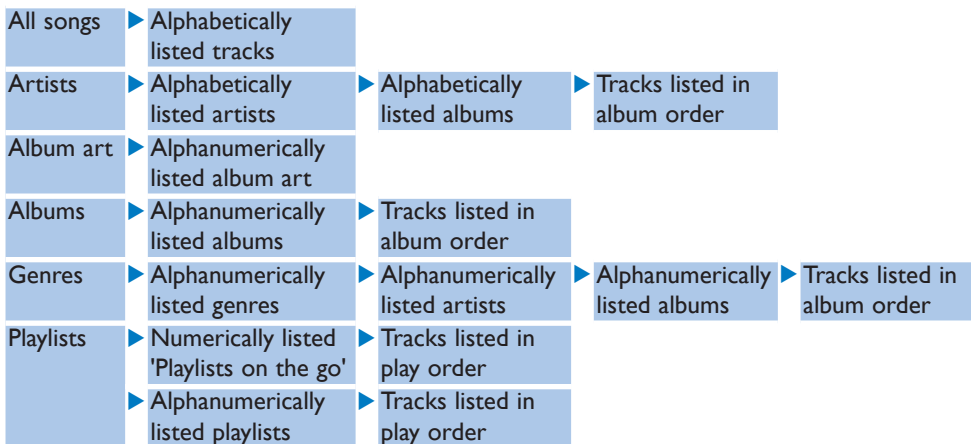
The player offers the following music mode options:






| Goal                          | Action             |
|-------------------------------|--------------------|
| Play / Pause music            | Press ►            |
| Skip to next audio file       | Press ►            |
| Return to previous audio file | Press ◀            |
| Fast forward                  | Press and hold ►   |
| Fast rewind                   | Press and hold ◀   |
| Return to browsing menu       | Long/short press ↶ |
| Increase volume               | Press VOL +        |
| Decrease volume               | Press VOL -        |
| Access options menu           | Press OPTIONS      |

## 5.1.2 Find your music




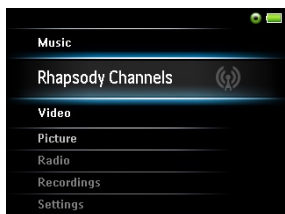
- 1 From the main menu, select  to enter music mode.  
The player offers the following menu options:




- 1 Press  or  to scroll through the list.
- 2 Press  to select or press  to return to previous level.
- 3 Press  to play.

### 5.1.3 Find your Rhapsody Channels\*

When you transfer Rhapsody Channels to the player, the Rhapsody Channels icon  appears in the home menu.



- 1 From the main menu, select  to enter **Rhapsody Channels**.
- 2 Press ▲ or ▼ to scroll through the list of items that are available to you.
- 3 Press ► to select or press ↶ to return to previous level.
- 4 Press ►|| to play.

### 5.1.4 Adding music from your Rhapsody Channels\* to the player library

You can add music from your Rhapsody Channels to the library of your player. Adding the music to the library of your player enables you to search for a specific song.

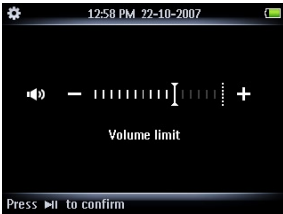
- 1 While playing music from your Rhapsody channel, press **OPTIONS** to see the options menu.
- 2 Press ▲ or ▼, then ►|| to select **Add to Library**.
  - > The currently playing music is added to the player library.

\* Les chaînes Rhapsody sont disponibles uniquement si vous détenez un compte Rhapsody actif (pour plus d'informations, voir aussi la section 4 **Gestion et transfert d'images et de musique à l'aide du lecteur multimédia Rhapsody de ce mode d'emploi**).

## 5.1.5 Limit the volume

Listening to loud sounds for longer than a moment can be harmful to the listener. You can set the volume level of the player to suit your preferences:

- 1 From the main menu, select **Settings > Sound settings > Volume limit**.
- 2 Press **-VOLUME+** to adjust the level.
- 3 Press **▶||** to set.



- > When you set a volume limit, you can no longer exceed the set volume, even if you press the **VOLUME+** button.

To enable maximum volume again, set the volume limit back to maximum.

## 5.1.6 Resume play (Now playing)

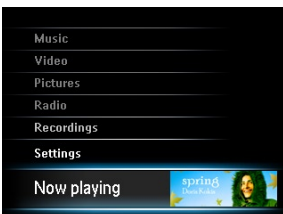
While playing, when you navigate away from the play screen, you can return to the play screen anytime.

**In any menu except the main menu:**

- 1 Press **OPTIONS**.
- 2 Press **▲** or **▼**, then **▶||** to select **Now playing** [current track name].

**In the main menu:**

- 1 Press **▲** or **▼**, then **▶||** to select **Now playing**.

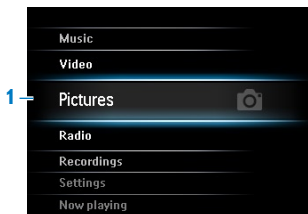





## 5.2 Picture library

### 5.2.1 View pictures

The player supports pictures in JPEG format and provides a slide show function.



- 1 From the main menu, select  to enter Picture mode.
- 2 Press ▲ or ▼ to browse through picture thumbnails.
- 3 Press ►|| to see the picture in full view.
- 4 During full screen browsing, press ▲ or ▼ to move to next or previous picture.

### 5.2.2 Adding pictures to folder 'Favorites'


The **Favorites** feature enables you to share your favorite pictures more quickly. This is a useful feature when you have many picture files.

- 1 While viewing a picture, press **OPTIONS** to see the options menu.
- 2 Press ▲ or ▼, then ►|| to select **Add to Favorites**.
  - > The currently displayed picture is added to the folder Favorites.



### 5.2.3 Slideshow

A slideshow displays all pictures within the album in full view. It moves to the next picture at a specified interval.

- 1 To start a slideshow in thumbnails or full screen browse mode, press **OPTIONS** to see the options menu.
- 2 Press ▲ or ▼, then ►|| to select **Start Slideshow**.
- 3 To cancel the slideshow, press .

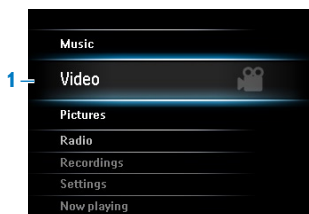
## 5.3 Video







### 5.3.1 Transfer videos from a computer to the player

Please see section **3.6 Download, convert & transfer videos with MediaConverter™** in this user manual.

### 5.3.2 Video play

You can play video clips that are stored on the player.






- 1 From the main menu, select  to enter Video mode.
  - > A list of video files stored on the player is displayed.
- 2 Press  or  to select the file and press  to play.
- 3 Short press  to go back to the previous menu, and long press  to return to the main menu.

### 5.3.3 Fast forward / backward control

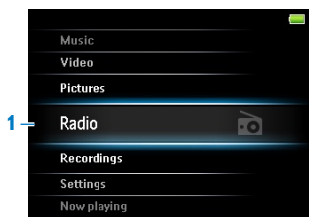
The player enables you to scan videos in fast forward / backward mode.

#### Fast forward / backward

- 1 Long press  to select 4x normal speed.
  - > Press  anytime to resume normal speed play.
- 2 While in 4x normal speed mode, press  to cycle through the following speed options: 8x normal speed > 16x normal speed > 4x normal speed...

## 5.4 Radio

From the main menu, select  to enter radio mode.



### Connect the headphones

The supplied headphones serve as a radio antenna. Ensure you connect the headphones properly for an optimal reception.

### 5.4.1 Automatic tuning of radio stations



#### Note

The Autotune function saves the frequencies of found radio stations under presets and overwrites existing presets. When there are no frequencies saved under presets, the radio feature prompts you to start Autotune.

### Start a new Autotune session

- 1 While in radio mode, press **OPTIONS** to see the options menu.
- 2 Press **▲** or **▼** to select the Autotune, then **▶||** to start.
  - > *The frequencies of found radio stations are saved to presets.*
  - The radio can store up to 20 radio stations to presets.*

### 5.4.2 RDS (Radio Data System)

The player supports the RDS feature of FM radio stations. RDS stations can send additional information along with the FM radio signal, such as channel information.

### 5.4.3 Play a preset radio station

- 1 While in radio mode, press **OPTIONS** to see the options menu.
- 2 Press **▲** or **▼** to select the **Select radio preset**, then **▶||** to begin play.
- 3 Press **◀▶** to change to another preset.

### 5.4.4 Manually tune a radio station

- 1 While in radio mode, press **▲** or **▼** to manually tune to a radio station:
  - > *To fine tune frequency, quick press **▲/▼**.*
  - To search for the next stronger signal, long press **▲/▼**.*

## 5.4.5 Manually save a radio station to a preset






- 1 While playing a radio station, press **OPTIONS** to see the options menu.
- 2 Press **▲** or **▼** to select the **Save to preset**, then **▶||** to save.



## 5.5 Recordings





You can record audio with the player. The section **3.1 Overview of controls and connections** shows you the location of the microphone.



- 1 From the main menu, select .
- 2 Press  or  to select the **Start voice recording**, then  to start.
- 3 Press  to pause.
- 4 Press  to stop and save the recording.
  - > Your recordings are saved in the *Recordings library* on the player.
- 5 You can find the voice recordings file under  > **Recordings Library** > **Voice recordings**.

 **Note** To record FM radio<sup>1</sup>, see section **5.4 Radio**.

### 5.5.1 Play recordings


- 1 From the main menu, select  > **Recordings Library** > **Voice recordings**.
- 2 Press  or  to select the recording you want to hear.
- 3 Press  to play.

### 5.5.2 Upload recordings to the computer

- 1 Connect the player to your computer.
- 2 Select the player in **Windows Explorer**.
- 3 Select **Recordings** > **Voice**.
- 4 Copy and paste the recordings to any desired location on the computer.

### 5.5.3 Delete recordings

You can delete one or all of the recordings.

- 1 From the main menu, select  > **Recordings Library** > **Voice recordings**.
- 2 Press ▲ or ▼ to select the recording you want to delete.
- 3 Press **OPTIONS** to see the options menu.
- 4 Press ▲ or ▼ to select **Delete** or **Delete all**.
- 5 Press ►|| to confirm.

## 5.6 Use your player to store and carry data files

You can use your player to store and carry data files by copying data files into your player with **Windows Explorer**.

# 6 Play music or videos with *Bluetooth*<sup>®</sup>

You can stream music or the audio of video files to other *Bluetooth*<sup>®</sup> enabled output devices, such as headphones or a car stereo system.

## 6.1 Play audio or video on another *Bluetooth*<sup>®</sup> output device

You can choose to play either on a 'new device' or on an 'already paired device'. A new device is a device that has not yet been paired with the player. A device that has been previously paired with the player can be directly selected from the list. This chapter explains the two different methods:

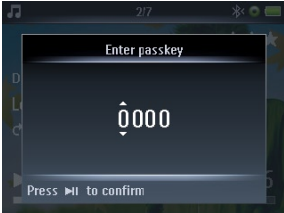
### New Device:

- 1 Ensure that the other *Bluetooth*<sup>®</sup> device is turned on and in pairing mode.
- 2 While playing music or video press **OPTIONS**.



- 3 Press **▲** or **▼** and **▶||** to select the option **Play via Bluetooth**.
- 4 Press **▲** or **▼** and **▶||** to select **New Device**.
  - > *The player searches and then displays the list of found devices.*
- 5 Select the device you want to connect to.

- 6 Enter the passcode of the other device if necessary. (Consult the user manual of the other device.)



> A confirmation message appears upon successful connection.

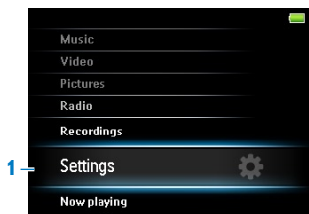
### Already paired device:

- 1 Ensure that the other *Bluetooth*<sup>®</sup> device is turned on.
  - 2 While playing music or video press **OPTIONS**.
  - 3 Press ▲ or ▼ and ► to select the option **Play via Bluetooth**.
  - 4 Press ▲ or ▼ and ► to select the device you want to connect to.
- > A confirmation message appears upon successful connection.



# 7 Settings

You can set preferences in your player to suit your needs.



- 1 Press and select .
- 2 Press or to select an option.
- 3 Press to go to next level or to return to previous level.
- 4 Press to confirm your selection.
- 5 Press to exit the **Settings** menu


In the Settings menu, the following options are available:

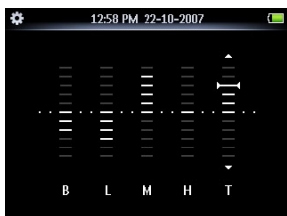
| Settings       | Options   | Further Options   |
|----------------|---|---|
| Play mode      | Shuffle all   | On / Off  |
|                | Repeat  | Off / Repeat 1 / Repeat all   |
| Sound settings | Volume limit  | Off / Set   |
|                | FullSound   | On / Off  |
|                | Equalizer   | Off / Rock / Pop / Jazz / Classical / Dance / Electronica / Lounge / RnB / Hip Hop / Spoken Word / Custom |
| Backlight      | Always on / 10 seconds / 30 seconds / 60 seconds  |   |
| Brightness     | slider (5 stages)   |   |
| Sleep timer    | Off / 15 minutes / 30 minutes / 60 minutes  |   |
| Language       | English (default) / French / German / Spanish / Italian / (Br)-Portuguese / Portuguese (European) / Dutch / Swedish / Norwegian / Finnish / Hungarian / Polish / Chinese Simplified / Chinese Traditional / Japanese / Korean / Thai (for version /97 only) / Turkish |   |
| Bluetooth      | Turn on Bluetooth / Turn off Bluetooth  |   |
|                | Connect to...   | New device / Connected device (list)  |
|                | Show Device to Others / Hide Device from Others   |   |
|                | Device Information  | Device name / Device profiles   |
| Rhapsody       | Rhapsody Account Information  |   |
| Screensaver    | Off / Clock / Demo  |   |



| Settings         | Options                   | Further Options                 |                         |
|------------------|---------------------------|---------------------------------|-------------------------|
| Time and Date    | Time Settings             | Set time format                 | 12 hrs / 24 hrs         |
|                  |                           | Set time                        | Hour / Minute / AM/ PM  |
|                  | Date Settings             | Set date format                 | dd/mm/yyyy / mm/dd/yyyy |
|                  |                           | Set date                        | Day / Month / Year      |
|                  | Display in Header         | Off / On                        |                         |
| Skins            | Dark / Light / Red        |                                 |                         |
| Factory settings | Restore factory settings? | Confirmation feedback           |                         |
| Information      | Memory                    | Capacity / Available free space |                         |
|                  | Firmware version          |                                 |                         |
|                  | Support website           |                                 |                         |

## 7.1 Equalizer custom settings

You can customize the equalizer settings:

- 1 From the main menu, select .
- 2 Press **▲** or **▼**, then **▶||** to select **Sound settings**.
- 3 Press **▲** or **▼**, then **▶||** to select **Equalizer**.
- 4 Press **▲** or **▼**, then **▶||** to select **Custom**.
- 5 Press **◀** or **▶** to select equalizer band:  
**B** = bass, **L** = low, **M** = mid, **H** = high, **T** = treble
- 6 Press **▲** or **▼** to adjust level.



- > Bar indicator shows current level.
- 7 Press **▶||** to confirm your selection.
    - > Press  to cancel the adjustments.
  - 8 Press  to exit the **Settings** menu.

# 8 Update your player

Your player is controlled by an internal program called the firmware. Newer versions of the firmware may have been released after you have purchased your player.

A software program called **Philips Device Manager** checks for firmware updates that are available on the Internet.

Install **Philips Device Manager** from the supplied CD or download the latest version from [www.philips.com/support](http://www.philips.com/support).

## 8.1 Perform a software update

**!** **Attention** This procedure will erase the content of the player.

- 1 Copy the content of the player to the computer as a back-up.
- 2 Disconnect the player from the computer.
- 3 Turn off your player.
- 4 Ensure the computer is connected to the Internet.
- 5 Click **Start > Programs > Philips Digital Audio Player > SA52XX > Philips SA52XX Device Manager** to launch the **Philips Device Manager**.



- 6 On the player, hold the volume "+" button while you connect the player to the computer.
  - > *The Device Manager enters recovery mode.*
- 7 Click **OK** to continue.
- 8 When the display indicates that the process is finished, disconnect the player from the computer.
  - > *The display shows Updating firmware.*
- 9 Wait until the update process is completed on the player.
  - > *The player restarts and is ready for use again.*
- 10 Reconnect the player to the computer.
- 11 Transfer the back-up content to the player.

# 9 Technical data

## Power

- Power supply  
880mAh Li-polymer internal rechargeable battery<sup>2</sup>

## Display

- White backlight LCD, 320 x 240 pixels, 262K colors

## Sound

- Channel separation: 45dB
- Equalizer setting:  
Off / FullSound / Rock / Pop / Jazz /  
Classical / Dance / Electronica / Lounge /  
RnB / Hip Hop / Spoken Word / Custom
- Frequency response: 20-18000Hz
- Signal to noise ratio: > 84dB
- Output Power (RMS): 2x2.4mW

## Audio playback

- Compression format: MP3 (8-320kps and VBR, Sample rates: 8, 11.025, 16, 22.050, 24, 32, 44.1, 48kHz), WMA (5-192kbps, Sample rates: 8, 11.025, 16, 22.050, 24, 32, 44.1, 48kHz)
- Play time: 30 hours<sup>2</sup>
- ID3-tag support

## Video playback

- MPEG4 SP: Up to 640kbps in avi format, 320 x 240 pixels, 30fps (other formats to be supported by provided MediaConverter™ for Philips)
- WMV9: Up to 512kbps, 320 x 240 pixels, 30fps (other formats to be supported by provided MediaConverter™ for Philips)
- Play time: 6 hours<sup>2</sup>

## MediaConverter™ for Philips

- Support format:  
AVI, WMV (requires WMP10 or above), MOV (requires Quicktime), RM (requires RealPlayer)

## Recording

- Audio Capturing: Build-in microphone (Mono)

## Storage media

- Built-in memory capacity:  
SA522x 2GB NAND Flash<sup>3</sup>  
SA524x 4GB NAND Flash<sup>3</sup>  
SA528x 8GB NAND Flash<sup>3</sup>

## Connectivity

- Headphone 3.5mm, USB 2.0<sup>4</sup>
- Bluetooth®
  - Bluetooth® profiles: A2DP, AVRCP
  - Bluetooth® version: 2.0+EDR

## Music and picture transfer

- Via Rhapsody

## Video transfer

- Via MediaConverter™ for Philips

## Data transfer

- Via Windows Explorer

## System requirements

- Windows® XP (SP2 or above), Vista
- Pentium III 800MHz processor or higher
- 128MB RAM
- 500MB hard disk space
- Internet connection
- Microsoft Internet Explorer 6.0 or later
- Video display card
- Sound card
- CD-ROM
- USB port

<sup>2</sup> Rechargeable batteries have a limited number of charge cycles. Battery life and number of charge cycles vary by use and settings.


<sup>3</sup> 1MB = 1 million bytes; available storage capacity will be less.  
1GB = 1 billion bytes; available storage capacity will be less.  
Full memory capacity may not be available as some memory will be reserved for the player.  
Storage capacity based on 4 minutes per song and 64kbps WMA encoding.

<sup>4</sup> Actual transfer speed may vary based on your operating system and software configuration.

# 10 Frequently asked questions

If you encounter problems with your player, go through the following points listed in the next section. Please also check out FAQs at [www.philips.com/support](http://www.philips.com/support) for further help and other troubleshooting tips.

Consult your dealer or service center if you are unable to find a solution by following these hints.

 **Warning** Under no circumstances should you try to repair the set yourself, as this will invalidate the warranty.

## My player cannot power on.

- You may have failed to press and hold ►|| long enough. Press and hold ►|| until the Philips welcome screen appears on display.
- Your device battery may be out of power due to long period of non-usage. Please charge your player.

**If none of the above works, then you may have to use the Device Manager to recover your player:**

- 1 Launch the **Philips Device Manager** at **Start > Programs > Philips Digital Audio Player > SA52XX > Philips SA52XX Device Manager** on your PC.
- 2 Press and hold the **VOL+** button while your player is connecting to the PC.
- 3 Keep holding the key until the **Philips Device Manager** acknowledges your player and goes into recovery mode.
- 4 Click the **repair** button and follow the instructions given by the **Device Manager**.
- 5 After the player has been repaired, disconnect it from your PC and re-start.

## There is no music on my player after transfer.

**Are your songs in MP3 or WMA format?**

Other formats will not playback on the player.

## There is no picture on my player after transfer.

**Are your pictures in JPEG, BMP or GIF format?**

Pictures in other formats cannot be transferred to your player.

## There is no video on my player after transfer.

Make sure you use MediaConverter™ for Philips (provided in the CD-ROM) to convert the video clips into the readable format to the player.

## My player hangs.

- 1 In the unlikely event that your player hangs, do not panic. Insert a small pin or other sharp object into the reset hole located at the bottom of the player. Hold until the player shuts down.



**Note** The existing contents on your player will not be erased.

- 2 If nothing happens, recharge the battery for at least 4 hours and try to power on or reset again. If this does not work, you might have to repair your player with **Philips Device Manager**.

## There is no sound.

Make sure your headphones are inserted all the way into the headphones jack.

## Some songs do not show up or playback on the player.

The audio file might be corrupted, try to playback the file on your PC first. If it does not play, rip the song again.

PHILIPS reserves the right to make design and specification changes for product improvement without prior notice.





Specifications are subject to change without notice.  
Trademarks are the property of Koninklijke Philips  
Electronics N.V. or their respective owners  
© 2008 Koninklijke Philips Electronics N.V.  
All rights reserved.  
[www.philips.com](http://www.philips.com)

CE 1588



Printed in China  
wk8255

## Free Manuals Download Website

<http://myh66.com>

<http://usermanuals.us>

<http://www.somanuals.com>

<http://www.4manuals.cc>

<http://www.manual-lib.com>

<http://www.404manual.com>

<http://www.luxmanual.com>

<http://aubethermostatmanual.com>

Golf course search by state

<http://golfingnear.com>

Email search by domain

<http://emailbydomain.com>

Auto manuals search

<http://auto.somanuals.com>

TV manuals search

<http://tv.somanuals.com>