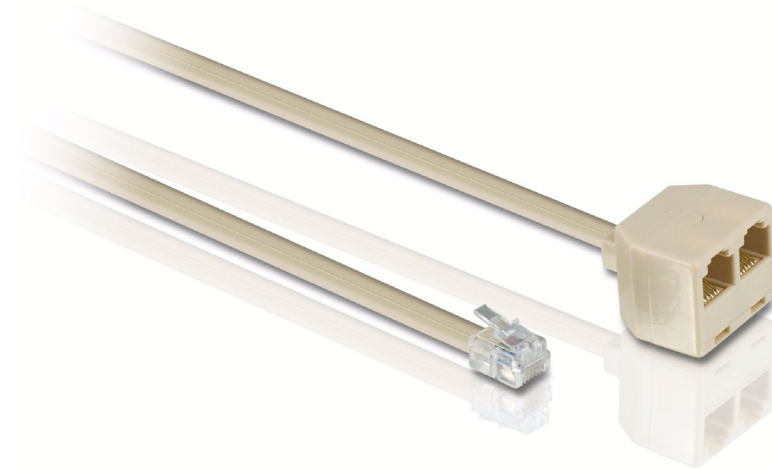


Philips
Extension cord

25 ft

Almond

SDJ6430



Extend your reach

Extend your phone line cord by 25 ft and give yourself more room to roam. Hook up two devices to a single line.

Extend your reach

- Lengthens a line cord

Hook up two devices

- Splits one phone line into two

Superior technology

- Six conductor construction
- Crafted with quality construction

Environmentally friendly

- Environmentally friendly lead-free construction

PHILIPS
sense and simplicity

Extension cord
25 ft Almond

Specifications

Packaging

- EAN/UPC/GTIN: 6 09585 13102 6
- Quantity: 1
- Gross Weight: 0.180 kg
- Tare Weight: 0.000 kg
- Net Weight: 0.180 kg
- Length: 9.60 cm
- Width: 3.8 cm
- Height: 18.50 cm

Inner Carton

- EAN/UPC/GTIN: 1 06 09585 13102 3
- Quantity: 4
- Gross weight: 0.790 kg
- Tare weight: 0.070 kg

- Net weight: 0.720 kg
- Length (cm): 33.00 cm
- Width (cm): 19.30 cm
- Height (cm): 5.30 cm

Outer Carton

- EAN/UPC/GTIN: 2 06 09585 13102 0
- Quantity: 24
- Gross weight: 5.100 kg
- Tare weight: 0.780 kg
- Net weight: 4.320 kg
- Length (cm): 34.50 cm
- Width (cm): 20.30 cm
- Height (cm): 34.00 cm

SDJ6430/17

Product highlights

Lengthens a line cord

Allows two modular cords to be connected to lengthen one cord.

Splits one phone line into two

Easily create two phone lines from one existing line.

Six conductor construction

Allows for up to three different phone lines.

Quality construction

Quality construction uses only top grade materials to create products of extended durability.



Issue date 2007-09-08

Version: 1.0

12 NC: 8670 000 29219
UPC: 6 09585 13102 6

© 2007 Koninklijke Philips Electronics N.V.
All Rights reserved.

Specifications are subject to change without notice.
Trademarks are the property of Koninklijke Philips
Electronics N.V. or their respective owners.

www.philips.com

Free Manuals Download Website

<http://myh66.com>

<http://usermanuals.us>

<http://www.somanuals.com>

<http://www.4manuals.cc>

<http://www.manual-lib.com>

<http://www.404manual.com>

<http://www.luxmanual.com>

<http://aubethermostatmanual.com>

Golf course search by state

<http://golfingnear.com>

Email search by domain

<http://emailbydomain.com>

Auto manuals search

<http://auto.somanuals.com>

TV manuals search

<http://tv.somanuals.com>