

# PHILIPS



HF370/HF375

## SensorTouch

---

### TEMPLE THERMOMETER



Gentle stroke of forehead  
measures temperature

FAST & EASY

---

GUARANTEED  
ACCURACY

---



**PHILIPS**

# IMPORTANT SAFETY INSTRUCTIONS

When using an appliance, especially when children are present, basic safety precautions should always be followed, including the following:

**Read all instructions before using this appliance.**

1. Do not use while bathing.
2. Do not place or store product where it can fall or be pulled into a tub or sink.
3. Do not try to sterilize thermometer in boiling water. See Care & Maintenance Section for cleaning instructions.
4. **This unit is intended for household use only. For information on thermometers for professional use, please call 1-877-SEE-TEMP (733-8367).**
5. Close supervision is necessary when this appliance is used by, on or near children or invalids.
6. Use this product only for its intended use as described in this manual. Do not use attachments not recommended by Philips Electronics North America Corporation.
7. Never operate this product if it is not working properly, if it has been dropped or damaged, or dropped into water. There are no user serviceable parts except replacement battery. Return thermometer to any Authorized Norelco Service Location for examination, repair, or adjustment.
8. Do not use outdoors or operate where aerosol (spray) products are being used or where oxygen is being administered.
9. Keep out of reach of children.
10. Do not let children place thermometer or thermometer cap in mouth.
11. The thermometer is not shock resistant. Do not drop it or expose it to shock.

12. Never drop or insert any object into any opening.
13. Do not use this thermometer for measurements other than temporal body temperature.
14. Use of this thermometer is not intended as a substitute for consultation with your physician.
15. If your thermometer will not be used on a regular basis, remove battery to prevent possible damage due to chemical leakage. If battery does leak, remove carefully. Do not allow bare skin to touch leaking fluid.
16. Dispose of used battery properly. Do not wrap in metal or aluminum foil. Wrap in newspaper before discarding. Do not incinerate. Battery may explode if overheated.

## SAVE THESE INSTRUCTIONS

# PHILIPS

## 60-DAY MONEY-BACK GUARANTEE

If you are not fully satisfied with your Philips SensorTouch Thermometer, Philips will refund you the full purchase price.

The SensorTouch Thermometer must be shipped prepaid by insured mail, insurance prepaid, and have the sales receipt, indicating purchase price and the date of purchase, enclosed. The SensorTouch Thermometer must be postmarked no later than 60 days after the date of purchase. Philips reserves the right to verify the purchase price of the product and limit refunds not to exceed suggested retail price.

Send dated sales receipt, your complete name and address as indicated below, and the product, prepaid to:

Norelco Consumer Products Company  
A Division of Philips Electronics North America Corporation  
P.O. Box 1116  
Skokie, IL 60076

Please allow 4-6 weeks for delivery of check. (Please Print)

Name \_\_\_\_\_

Address \_\_\_\_\_

City \_\_\_\_\_

State \_\_\_\_\_ Zip \_\_\_\_\_

Telephone No. (\_\_\_\_) \_\_\_\_\_

AREA CODE

REASON FOR RETURNING: \_\_\_\_\_

\_\_\_\_\_

\_\_\_\_\_

\_\_\_\_\_

\_\_\_\_\_

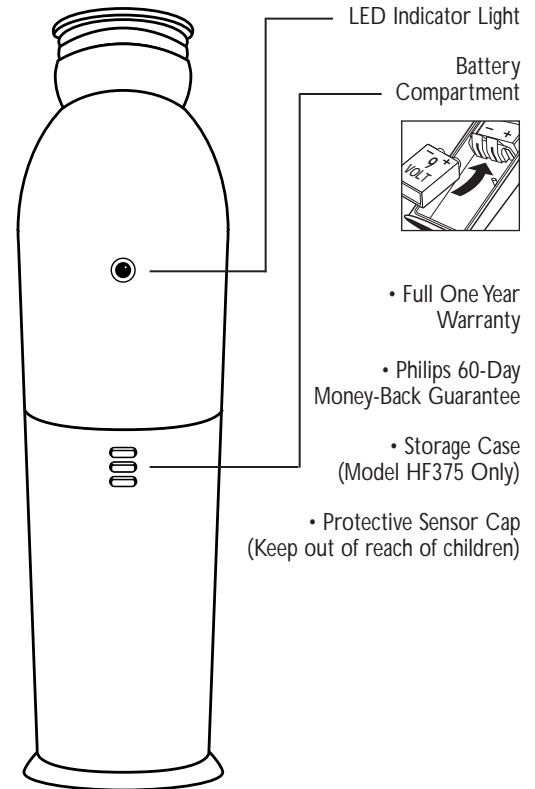
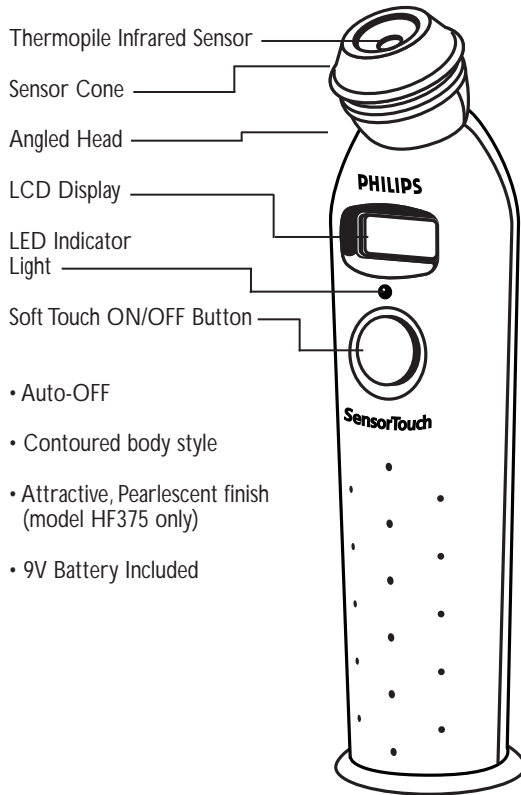
\_\_\_\_\_

\_\_\_\_\_

## Table of Contents

FEATURES	2 - 3
INTRODUCTION	4 - 5
HOW DOES THIS SENSORTOUCH THERMOMETER WORK?	5
BODY TEMPERATURE	6 - 7
BATTERY INSTALLATION/REPLACEMENT	8
AFFIXING PRODUCT LABEL	9
INDICATORS	9
HOW TO TAKE A TEMPERATURE	10 - 12
CARE & MAINTENANCE	13
TROUBLESHOOTING & ASSISTANCE	14 - 15
SPANISH INSTRUCTIONS	
WARRANTY	Back Cover

## FEATURES



## INTRODUCTION

Congratulations and thank you for purchasing the new, revolutionary Philips SensorTouch Temple Thermometer.

Your new Philips SensorTouch Temple Thermometer is the first and only totally non-invasive system with advanced infrared technology, providing maximum ease of use with quick, consistently accurate measurements. Advanced, patented technology measures temperature with a gentle stroke across the forehead.

The SensorTouch Temple Thermometer is clinically proven as consistently accurate as rectal thermometers and accepted for use in major hospitals, making it the ideal thermometer for use with newborns, infants, children or adults.

The SensorTouch Temple Thermometer has patented software, providing arterial heat balance. This unique process determines temperature by accurately measuring the thermal balance between the tissues warming from arterial blood and tissue cooling caused by heat loss (gain) to the environment.

SensorTouch Temple Thermometer ... fast, accurate and totally non-invasive.



### ► Why take temperature measurements at the temple?

The best place to measure temperature is the center of the heart, however; this is an invasive procedure, used only when under a doctor's supervision. Doctors know that measurement of the blood temperature in a main artery accurately reflects true body temperature.

**The SensorTouch Temple Thermometer is designed to measure temperature directly via the skin surface over the temporal artery.**

- The temporal artery is connected to the heart via the carotid artery, directly leading from the aorta, the main trunk of the arterial system. It is considered a major artery, offering constant blood flow. It is the only such artery positioned very close to the skin surface to provide an accurate measurement. It is ideally located at the front portion of the forehead, providing ease of use. SensorTouch is easier to use than other types of measurement devices such as oral, rectal, underarm and in-ear because it is non-invasive therefore, doesn't have to go into any orifices. This thermometer has been clinically tested in major university hospitals, with readings proven to be as accurate as rectal measurements.

## HOW DOES THIS SENSORTOUCH THERMOMETER WORK?

The Philips SensorTouch Thermometer is the first totally non-invasive system with advanced infrared technology, providing maximum ease of use with instant, consistently accurate measurements.

As you gently stroke the thermometer across the forehead crossing over the temporal artery, the sensor performs two processes:

- It scans like a video camera, capturing naturally emitted infrared heat from the arterial blood supply, locking in the highest temperature it senses and;
- The patented system measures ambient air temperature at the very same time.

The patented "arterial heat balance" (AHB) software then synthesizes the two separate readings to accurately determine and display peak temperature.

## BODY TEMPERATURE

Body temperature is the temperature inside a person's body. Traditionally, this temperature is measured orally or rectally. These methods, however, take several minutes. Moreover, the accuracy of oral measurements can be effected by the breathing (causing a decrease in temperature) or beverages that have just been consumed (causing either an increase or decrease in temperature).

The best place to measure body temperature would be inside the heart. The infrared sensor of the Philips SensorTouch measures body temperature on the skin surface over the arteries in the temple. These arteries are in close connection with the heart and therefore quickly reflect changes in the body's temperature. In addition, they lie close to the surface of the skin and are therefore very suitable for non-invasive measurement. Rectal measurement is generally considered the most accurate type of temperature measurement. Clinical tests have shown measurements carried out with the Philips SensorTouch Temple Thermometer to be just as accurate as rectal measurements.

### ► **Ideal for Infants and Children**

The Philips SensorTouch method is quick, simple, accurate and comfortable and therefore very suitable for measuring the temperature of children. You do not need to undress your child; a single stroke across the temple will produce an accurate result in only a few seconds. Small children even experience the "caress" with which you carry out the measurement as pleasant and comforting.

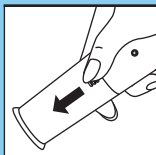
### ► **Normal Temperature**

"Normal temperature" is the body temperature of a healthy person. Not everybody has the same normal body temperature. Moreover, this temperature depends on the area on which it is measured, the time of day, the ambient temperature and the amount of physical exercise a person has had just before the measurement.

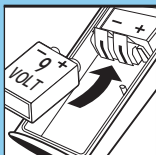
A temperature measured with the Philips SensorTouch thermometer can be considered normal if it lies between 97.5F and 99.5F (36.4C - 37.5C). It is recommended that you determine your normal temperature range (and that of your family members). You can do this by measuring your temperature at various times of the day.

## BATTERY INSTALLATION/REPLACEMENT

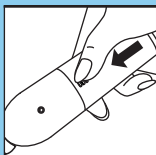
- ▶ Your new SensorTouch Thermometer requires a 9V battery (included).



- 1 Slide the battery cover downward as shown to open.



- 2 Insert the new 9V battery as indicated. Make sure that the (+) and (-) are positioned correctly.



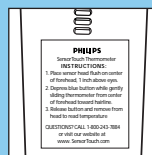
- 3 Close the battery cover.

## AFFIXING PRODUCT LABEL

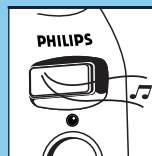
- ▶ For "at-a-glance", quick instructions on how to use the SensorTouch Thermometer:



- 1 Remove the special, quick instructions label and apply it to battery compartment cover on the back of the thermometer.

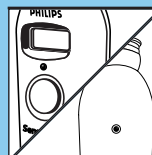


## INDICATORS



- ▶ **Audible Indicator**

- 1 Each time you hear the gentle audible sound, it indicates the thermometer has detected a higher temperature.
- ▶ It stops when it has sensed the highest (peak) temperature.

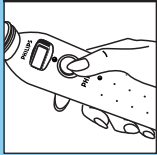


- ▶ **LED Indicator**

- 2 Blinking Red LED will also indicate a temperature measurement is in process. When the LED stops blinking and stays lit, your peak temperature has been recorded.
- ▶ There is an LED light on both sides of the thermometer, for verification that a temperature measurement is in progress regardless of which way you hold the thermometer.

## HOW TO TAKE A TEMPERATURE

- ▶ To ensure that you take an accurate temperature, please follow the instructions below.



- 1 Remove protective cap before use. Place the thermometer in your hand as shown with your thumb on the Soft Touch button.

- ▶ Do not press the button yet.



- 2 Gently position the sensor flush on center of the forehead, midway between eyebrow and hairline. Press and release the ON/OFF button.

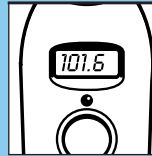
- ▶ Wait until the sensor is flush against the forehead before pressing the button, if not, the thermometer will beep and display “—”.



- 3 Slowly slide the thermometer across the forehead, keeping the sensor flat and in contact with the skin until you have reached the area at the top of the ear.
  - ▶ You will hear beeping and the LEDs will blink to indicate a measurement is taking place.
  - ▶ Be careful not to keep the sensor on one spot for too long, the thermometer will indicate that the measurement has been completed before you have reached the temporal artery.

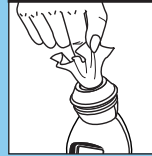


- 4 After the long beep when the red LED remains on, the measurement is complete and the thermometer may be removed from the head.



- 5 Read the temperature on the display, then press the button lightly to turn the thermometer off.

- ▶ The thermometer will automatically turn off after 30 seconds if you forget to do so.
- ▶ To take another temperature at any time, simply press the button and repeat the process.



- 6 The thermometer does not require cleaning after every reading, but like a camera lens, it should always be kept clean. To clean, point the sensor downwards, and gently wipe with a cotton swab or soft cloth moistened with rubbing alcohol or water.
  - ▶ Do not use a paper towel or abrasive cleaners.



- 7 Place the protective cap on thermometer to protect the sensor when not in use.



► **Important to Note:**

- 1 Thermometer automatically recalibrates – no need to wait for the display to clear. The thermometer is immediately ready when you are.
- 2 When reporting temperature readings to a professional; you may want to advise reading was obtained using temple artery method.

► **Temperature Do's & Don'ts**

- 1 Wait 5 minutes before taking the temperature of a person who has been outside in the cold, running around or playing, to allow the skin to equilibrate.
- 2 It does not make any difference if you take the temperature from the left or right superficial temporal artery.

## CARE & MAINTENANCE

### Cleaning the Thermometer

Your SensorTouch Thermometer is a very hygienic way of taking the temperature, non-invasively at the skin's surface where no mucus membranes are present to harbor germs associated with the mouth or rectum. Therefore, no lens covers are necessary. Cleaning the thermometer is very easy and can be done by:



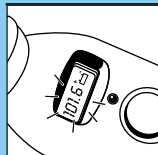
- 1 Use a soft, cotton cloth to clean the sensor and the body of the thermometer.
  - Do not use a paper towel and/or abrasive cleaners.
  - From time to time it is advised to use a cotton swab or soft cloth moistened with rubbing alcohol or water to wipe clean the sensor head of the thermometer.

### ► Storage

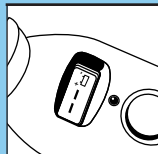
- Do not expose your thermometer to extreme temperatures, humidity, direct sunlight or shock.
- Store your unit in a location within the temperature range of 61°F to 104°F (16°C - 40°C).
- Keep sensor cap on unit when not in use.
- **Do not** hold your thermometer under the faucet or submerge in water. It is **not** waterproof.

## TROUBLESHOOTING

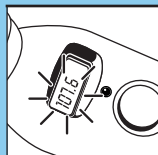
### ▶ WARNING MODES



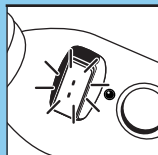
- 1** *Low Battery Warning*  
When the display flashes the temperature reading and a blinking battery symbol, the 9V battery is low and should be replaced. See Battery Installation section for instructions on installing/replacing the battery.



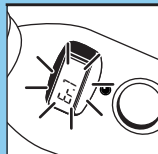
- 2** If "- -" and a blinking battery symbol appear on the display, there is not enough energy in the battery to measure a temperature. Replace the battery. See Battery Installation section for instructions.



- 3** If a flashing "107.6°F" is shown on the display, the target temperature is too high for thermometer to capture a reading.  
▶ **Solution:** This would indicate a person's temperature is above 107.6°F (42.0°C), and a physician should be contacted immediately.



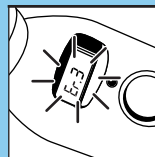
- 4** If "- -" is shown on the display, the target temperature is too low for thermometer to capture a reading.  
▶ **Solution:** This would indicate a person's temperature is below 96°F (35.5°C), and a physician should be contacted immediately.



- 5** If "Er.1" is shown on the display, the operating range is too high.  
▶ **Solution:** Area/Room is too warm for thermometer to take a temperature. Move to another area within the 61°F to 104°F (16.0°C – 40.0°C) range and retake temperature. Allow 30 minutes for unit to adjust to the room temperature.



- 6** If "Er.2" is shown on the display, the operating range is too low.  
▶ **Solution:** Area/Room is too cold for thermometer to take a reading. Move to another area within the 61°F to 104°F (16.0°C – 40.0°C) range and retake temperature. Allow 30 minutes for unit to adjust to the room temperature.



- 7** If "Er.3" is shown on the display, there is a system error.  
▶ **Solution:** Remove the battery and replace it in order to reset.

## ASSISTANCE

- ▶ For assistance or the Authorized Norelco Service Location nearest you, call toll free:

**1-877-SEE TEMP(733-8367)**  
or visit our website: [www.sensortouch.com](http://www.sensortouch.com)

- ▶ Authorized Norelco Service Location information is available 24 hours a day, 7 days a week.

## Free Manuals Download Website

<http://myh66.com>

<http://usermanuals.us>

<http://www.somanuals.com>

<http://www.4manuals.cc>

<http://www.manual-lib.com>

<http://www.404manual.com>

<http://www.luxmanual.com>

<http://aubethermostatmanual.com>

Golf course search by state

<http://golfingnear.com>

Email search by domain

<http://emailbydomain.com>

Auto manuals search

<http://auto.somanuals.com>

TV manuals search

<http://tv.somanuals.com>