

Register your product and get support at
www.philips.com/welcome

SLV3105



EN User manual

PHILIPS

Table of contents

1	Important	4
1.1	Power requirements	4
1.2	Conformity	4
1.3	Recycling and disposal	5
1.4	Electric, Magnetic and Electromagnetic Fields ("EMF")	5
1.5	Installation requirements	6
2	Your Wireless TV link	7
2.1	What's in the box	7
2.2	Overview of the Wireless TV link	7
3	Getting started	9
3.1	Connect transmitter	9
3.2	Connect receiver	10
3.3	Enjoy	10
3.4	Install the remote control blaster cord	11
3.5	Remove interference on TV2	11
4	Technical data	12
5	Frequently asked questions	13
6	INDEX	16
7	Declaration of Conformity	17

Important

Take time to read this user manual before you use your wireless TV link. It contains important information and notes regarding your wireless TV link.

1.1 Power requirements

- Connect the power adapters only to a 100-240V AC 50/60Hz power supply.
- The Electrical network is classified as hazardous. The only way to power down the charger is to unplug the power supply from the electrical outlet. Ensure that the electrical outlet is always easily accessible.

Warning

To avoid damage or malfunction:

- Do not expose the wireless TV link to excessive heat caused by heating equipment or direct sunlight.
- Do not drop your wireless TV link or allow objects to fall on your wireless TV link.
- Do not use any cleaning agents containing alcohol, ammonia, benzene, or abrasives as these may harm the set.
- Do not use the product in places where there are explosive hazards.
- Do not let small metal objects come into contact with the product. This can deteriorate audio quality and damage the product.
- Active mobile phones in the vicinity may cause interference.
- Do not open your product as you could be exposed to high voltages.
- Do not allow the charger to come into contact with liquids.
- Do not allow the TV link to come into contact with liquids.

- Use only with provided power supply.
Manufacturer: PHILIPS
Model Name: SSW1918
- Power supply information for receiver and transmitter.
Input: AC100-240V/300mA,
50Hz/60Hz
Output: DC9V/1100mA

About operating and storage temperatures:

- Operate in a place where temperature is always between 0 and 40°C (32 to 103°F).
- Store in a place where temperature is always between -25 and 60°C (-13 and 140°F).

1.2 Conformity

This product has been designed, tested and manufactured according the European R&TTE directive 1999/5/EC

Following this directive, this product can be brought into service in the following states:

CE 0682		R&TTE Directive 1999/5/EC			
BE ✓	DK ✓	GR ✓	ES ✓	FR ✓	
IE ✓	IT ✓	LU ✓	NL ✓	AT ✓	
PT ✓	RU ✓	SE ✓	UK ✓	NO ✓	
DE ✓	CH ✓	PL ✓	SK ✓	CZ ✓	

Class identifier. This is a class I product.

We, Philips, declare that the product is in compliance with the essential requirements and other relevant provisions of Directive 1999/5/EC. You can find the Declaration of Conformity on www.p4c.philips.com.

1.3 Recycling and disposal

Disposal instructions for old products.

The WEEE directive (Waste Electrical and Electronic Equipment; 2002/96/EC) has been put in place to ensure that products are recycled using best available treatment, recovery and recycling techniques to ensure human health and high environmental protection.

Your product is designed and manufactured with high quality materials and components, which can be recycled and reused.

Do not dispose of your old product in your general household waste bin.

Inform yourself about the local separate collection system for electrical and electronic products marked by this symbol:



Use one of the following disposal options:

1. Dispose of the complete product (including its cables, plugs and accessories) in the designated WEEE collection facilities.
2. If you purchase a replacement product, hand your complete old product back to the retailer. He should accept it as required by the WEEE directive.

Packaging information:

Philips has marked the packaging with standard symbols designed to promote the recycling and appropriate disposal of your eventual waste.



A financial contribution has been paid to the associated national recovery & recycling system.



The labeled packaging material is recyclable.

1.4 Electric, Magnetic and Electromagnetic Fields ("EMF")

1. Philips Royal Electronics Manufactures and sells many consumer oriented products which usually, as with any electronic apparatus, have the ability to emit and receive electro magnetic signals.
2. One of Philips' leading Business Principles is to take all necessary health and safety precautions for our products, to comply with all applicable legal requirements and to stay well within the EMF standards applicable at the time of producing the products.
3. Philips is committed to develop, produce and market products that cause no adverse health effects.
4. Philips confirms that if its products are handled properly for their intended use, they are safe to use according to scientific evidence available today.
5. Philips plays an active role in the development of international EMF and safety standards, enabling Philips to anticipate further developments in standardisation for early Integration in its products.

I.5 Installation requirements

The product transmits and receives radio waves when it is switched on.

The product complies with the standards that are defined for it.

As the product is based on RF technology, the quality of the image can be influenced by microwave ovens, Bluetooth, Wifi etc.

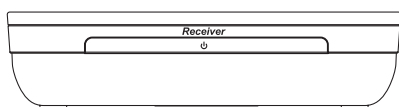
Therefore the product can suffer from the same kinds of interference as GSMs, portable radios and other RF-based products.

2 Your Wireless TV link

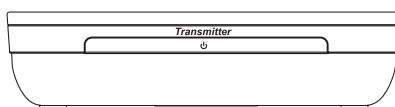
Congratulations on your purchase and welcome to Philips!

To fully benefit from the support that Philips offers, register your product at www.philips.com/welcome.

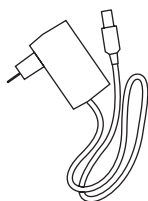
2.1 What's in the box



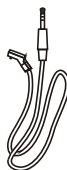
A. Transmitter



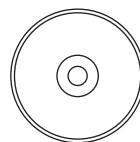
B. Receiver



C. Power adapter
(2x)



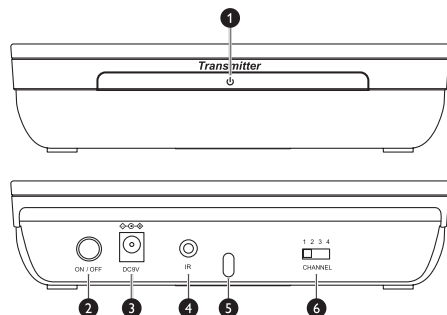
D. Remote control
blaster cord



E. User manual

2.2 Overview of the Wireless TV link

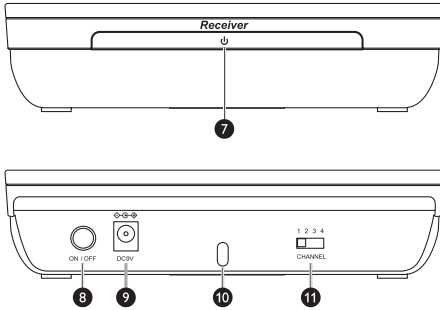
Transmitter



Control and display elements

- 1 Power light:
 - > green: on
- 2 On/off switch
- 3 Power input connector (DC 9V)
- 4 Remote control blaster cord port
- 5 SCART cable
- 6 Wireless channel selection switch
 - > Find the CHANNEL switch on 4 available channels

Receiver



Control and display elements

- 7 Power light:
 - > green: on
- 8 On/off switch
- 9 Power input connector (DC 9V)
- 10 SCART cable
- 11 Wireless channel selection switch
 - > Find the CHANNEL switch on 4 available channels

Remote control blaster cord



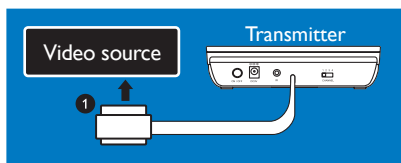
- 12 Connector
- 13 Blaster light

3 Getting started

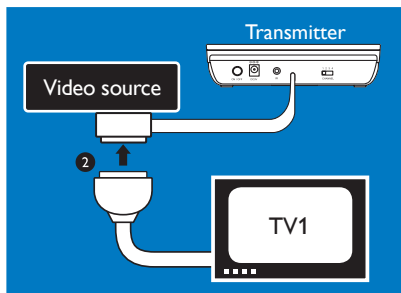
3.1 Connect transmitter

1. Connect the video source to the transmitter
 - a. Take the supplied transmitter (A). Find the SCART cable that is connecting the video source to the TVI. Disconnect this SCART cable.

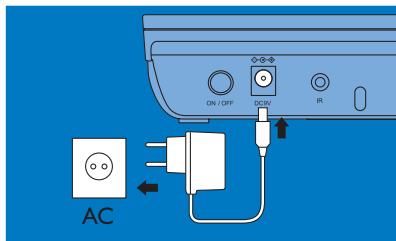
Note: the video source can be a satellite receiver, a VCR, a DVD player or recorder...



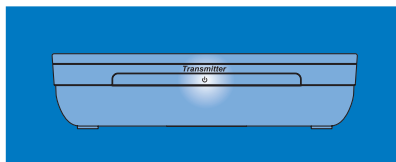
2. Connect TVI
 - a. Plug the SCART cable from TVI into the SCART connector of the transmitter (A).



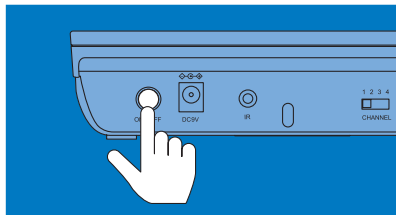
3. Connect the power adapter
 - a. Take the supplied power adapter (C) to plug the connector into the DC 9V power connector on the transmitter (A).
 - b. Plug the adapter into the power outlet.



- c. The green LED on the front panel should be on.



Note: if it is not the case, press the ON/OFF switch on the back of the product.

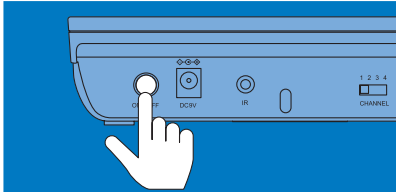


4. Check that TVI is working well
 - a. Switch on TVI
 - b. Check that TVI is working well.
 - c. Switch on the connected video source.
 - d. Check if TVI shows the image of the video source.
 - > The transmitter is connected correctly.
5. Connect the remote control blaster cord (D) to the IR socket.
 - Please reference to "3.4 Install the remote control blaster cord" to have more information.

3.2 Connect receiver

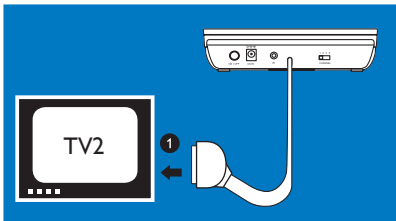
Preparation

- Switch on the transmitter (A).

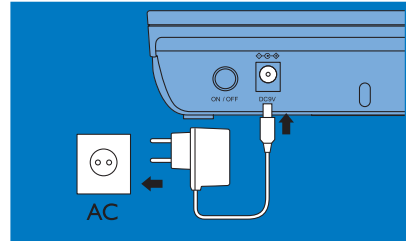


- Switch on the Video source.
- Take these items:
 - Receiver (B)
 - Power adapter (C)
 - Remote control of the video source.
- Go to TV2.

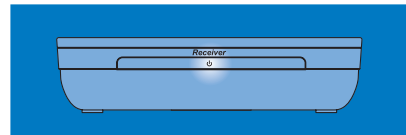
1. Connect the receiver to the second TV (TV2)
Plug the SCART cable of the receiver (B) into the SCART port of TV2.



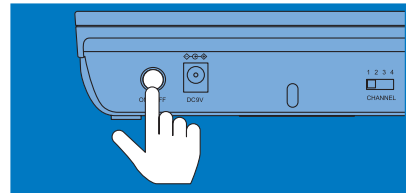
2. Connect the power adapter
 - a. Take the supplied power adapter (C) to plug the connector into the DC 9V power connector on the Receiver (B).
 - b. Plug the adapter into the power outlet.



- c. The green LED on the front panel should be on.



Note: if it is not the case, press the ON/OFF switch on the back of the product.

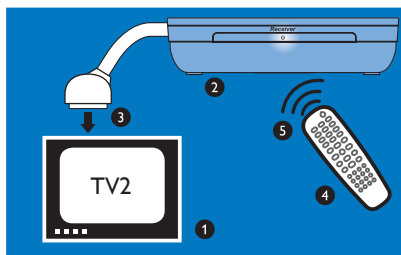


3. Set the CHANNEL switch to the same number that on the transmitter (A).

3.3 Enjoy

All the operations listed on 3.1 and 3.2 should have been done.

1. Switch on TV2.
2. Switch on the receiver (B).
3. Select the correct SCART input on TV2.
4. Point the remote control of the video source to the receiver (B).
5. Operate the video source with its remote control.
6. Check if TV2 shows the image of the video source.
 - > The receiver is connected correctly.



Note: If the VCR or DVD recorder records a television program, you watch the recorded channel.

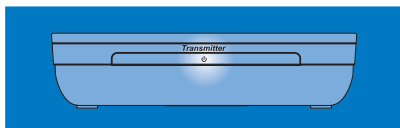
Note: how to watch a video source on TVI?

Use your TVI and your video source as usual to watch a video source on TVI.

3.4 Install the remote control blaster cord

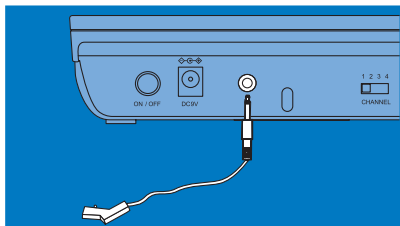
The remote control blaster cord transmits IR signal to Source devices.

1 Switch off the transmitter (A).



- 2 Connect the remote control blaster cord (D) to the IR socket.
- 3 Position the blaster light in front of the video source. Just put it in front of the IR sensor on the front panel.

Note: See the user manual of the video source for the exact location of the IR sensor on the front panel.

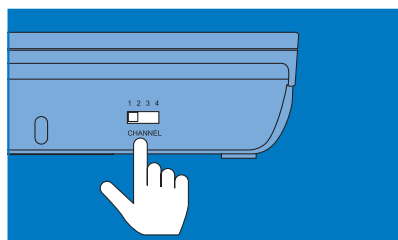


- 4 Switch on the transmitter (A).
- 5 If the IR control blaster is well installed, you can use your remote control to manage your video source.

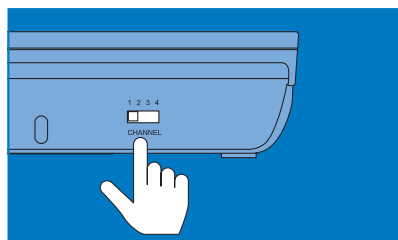
3.5 Remove interference on TV2

When 3.1 and 3.2 are done, you may have some interferences.

- 1 Find the CHANNEL switch on the transmitter (A). There are 4 channels. You may have to change the channels in case of interferences.
- 2 Set the CHANNEL switch to a different number on the transmitter (A) in case of interferences.



- 3 Find the CHANNEL switch on the receiver (B).
- 4 Set the CHANNEL switch to the same number as on the transmitter (A).



4 Technical data

Transmitter

System: RF (TV-LINK)
Modulation: FM
Weight: 0.292kg
Dimensions: 120X182X40.2mm
Carrier Frequency: 2400~2470MHz
Channels: 4
Radiated Output Power: 10mW
Effective Transmission Range: 40m
Audio Input level: 2V
Video Input level: 1.IV
Power requirements: 9V/500mA

IR Extender Receiver
RF Frequency: 433.92MHz
Receiving Sensitivity: -90 ~ -98 dBm
IR carrier Frequency: 30~57kHz
IR LED Operation Range: ≥ 3 m

Receiver

System: RF (TV-LINK)
Weight: 0.290kg
Dimensions: 120X182X40.2mm
Playback frequency range: 2400~2470MHz
Channels: 4
Audio S/N ratio: 45dB (at 15m)
Video S/N ratio: 50dB (at 15m)
Audio Output level: 2V
Video Output level: 1.IV
Video Frequency Response:
50Hz~5.5MHz

Audio frequency response: 40Hz~15kHz
Power Requirements: 9V/500mA

IR Extender Transmitter
IR Frequency: 433.92MHz
RF Output Power: 7~9dBm
IR carrier Frequency: 30~57kHz
IR Sensor Operation Range: ≥ 7 m

Temperature range

- Operation: Between 0 and 40°C (32 to 103 °F).
- Storage: Between -10 and 70°C (14 to 157 °F).

Relative humidity

- Operation: Up to 90% at 40°C
- Storage: Up to 90% at 40°C

5 Frequently asked questions

www.philips.com/support

In this chapter, you will find the most frequently asked questions and answers about your product.

No image or wrong image on TV1

- Make sure the video source is switched on.
- Make sure the video source is connected to the transmitter (A).
- Make sure the transmitter (A) is connected to TV1.
- Make sure the transmitter (A) is switched on.
- Make sure SCART cables are firmly inserted.
- Make sure the correct SCART input on TV1 is selected.

No image or wrong image on TV2

- Make sure SCART cables are firmly inserted.
- Make sure the receiver (B) is connected to TV2.
- Make sure both receiver (B) and transmitter (A) are switched on.
- Make sure the video source is switched on.
- Make sure the correct SCART input on TV2 is selected.
- If the video source gives proper image on TV1, make sure the video source gives video signal in CVBS mode.

- Change the wireless channel that is used for communication. See "Remove interference on TV2" on page 10.
- The receiver (B) is out of range of the transmitter (A). The number of walls and ceilings between the receiver (B) and transmitter (A) restricts the distance.

Interference in the image on TV2

- Slightly change the position of the receiver (B) or the transmitter (A).
- Change the wireless channel that is used for communication. See "Remove interference on TV2" on page 10.
- The receiver (B) is out of range of the transmitter (A). The number of walls and ceilings between the receiver (B) and transmitter (A) restricts the distance.

The video sources do not respond to the remote control commands from TV2

- Point the remote control directly to the receiver (B).
- Replace the batteries of the remote controls with new ones.
- Install the remote control blaster cord (D).

See "Install the remote control blaster cord" on page 10.

Note: The maximum operating distance of the remote control is 7m.

Buzzing sound when you use the remote control.

- Slightly change the position of the receiver or the transmitter until the buzzing sound stops.

- Black and white image with S-VHS VCR.
(Separate Video Home System Video/
Cassette/Recorder)
- Check if the SCART connector of the S-VHS VCR gives signal in CVBS. (Composite Video Broadcast Signal). See its user manual.

Glossary

CVBS:

Video standard for showing colors on a TV.

Easylink:

Gives a VCR or DVD recorder the possibility to automatically take over the preset programming of the TV.

RF technology:

Technology based on radio frequency, used for wireless connections.

SCART:

Single connector to easily connect audio and video equipment.

6 INDEX

C

Connect transmitter 9
Connect receiver 10
Channel 11

E

Enjoy 10

F

Frequently asked questions 13

G

Getting started 9

I

Interference 11

O

Overview of the Wireless TV link 7

R

Remote control blaster cord 11

T

Technical data 12

W

What's in the box 7

Y

Your Wireless TV link 7

Philips Consumer Lifestyle

HK-1043-SLV3105

2010

(Report No. / Numéro du Rapport)

(Year in which the CE mark is affixed / Année au cours de laquelle le marquage CE a été apposé)

EC DECLARATION OF CONFORMITY

(DECLARATION DE CONFORMITE CE)

We / Nous, PHILIPS CONSUMER LIFESTYLE B.V.

(Name / Nom de l'entreprise)

TUSSENDIEPEN 4, 9206 AD DRACHTEN, THE NETHERLANDS

(address / adresse)

Declare under our responsibility that the electrical product(s):

(Déclarons sous notre propre responsabilité que le(s) produit(s) électrique(s):)

PHILIPS

(brand name, nom de la marque)

SLV3105/12

(Type version or model, référence ou modèle)

Wireless TV Link

(product description, description du produit)

To which this declaration relates is in conformity with the following harmonized standards:

(Auquel cette déclaration se rapporte, est conforme aux normes harmonisées suivantes)

(title, number and date of issue of the standard / titre, numéro et date de parution de la norme)

EN62311:2008
EN 301489-1 V1.8.1:2008
EN 301489-3 V1.4.1:2002
EN 300 220-1 V2.2.1:2008
EN 300 200-2 V2.2.1:2008
EN 300 440-1 V1.4.1:2008
EN 300 440-2 V1.2.1:2008
EN 60950-1:2006/A11:2009

Following the provisions of :

(Conformément aux exigences essentielles et autres dispositions pertinentes de:)

1999/5/EC (R&TTE Directive) (Directive R&TTE 1999/5/CE)
2009/125/EC (ErP Directive)
- EC/1275/2008
- EC/278/2009

And are produced under a quality scheme at least in conformity with ISO 9001 or CENELEC Permanent Documents

(Et sont fabriqués conformément à une qualité au moins conforme à la norme ISO 9001 ou aux Documents Permanents CENELEC)

The Notified Body Cetecom / 0682 performed Notified Body Opinion
(L'Organisme Notifié) (Name and number/ nom et numéro) (a effectué) (description of intervention / description de l'intervention)

And issued the certificate, NA
(et a délivré le certificat) (certificate number / numéro du certificat)

Remarks:

(Remarques:)

Drachten, The Netherlands, 12 Oct. 2010

(place, date / lieu, date)

A. Speelman, CL Compliance Manager

(signature, name and function / signature, nom et fonction)



©2009 Koninklijke Philips Electronics N.V.

All rights reserved.

Reproduction in whole or in part is prohibited without
the written consent of the copyrightowner.

Document number: SLV3105_12_EN_UM_V1.0

CE0682 

Printed in China

Free Manuals Download Website

<http://myh66.com>

<http://usermanuals.us>

<http://www.somanuals.com>

<http://www.4manuals.cc>

<http://www.manual-lib.com>

<http://www.404manual.com>

<http://www.luxmanual.com>

<http://aubethermostatmanual.com>

Golf course search by state

<http://golfingnear.com>

Email search by domain

<http://emailbydomain.com>

Auto manuals search

<http://auto.somanuals.com>

TV manuals search

<http://tv.somanuals.com>