

READ AND UNDERSTAND THESE INSTRUCTIONS BEFORE INSTALLING FIXTURE

This fixture is intended for installation in accordance with the National Code and local regulations. To assure full compliance with local codes and regulations, check with your local electrical inspector before installation. To prevent electrical shock, turn off electricity at fuse box before proceeding.

Retain these instructions for maintenance reference.

INSTALLATION INSTRUCTIONS FOR SV5 LOUVER ACCESSORY

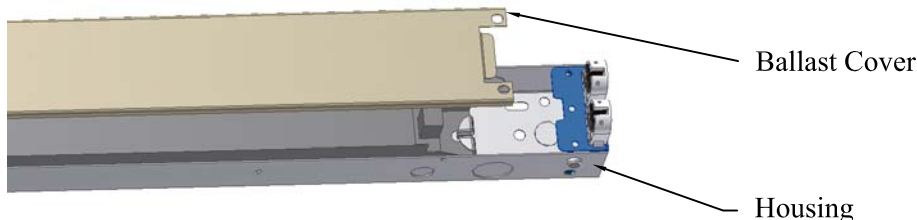


FIGURE 1

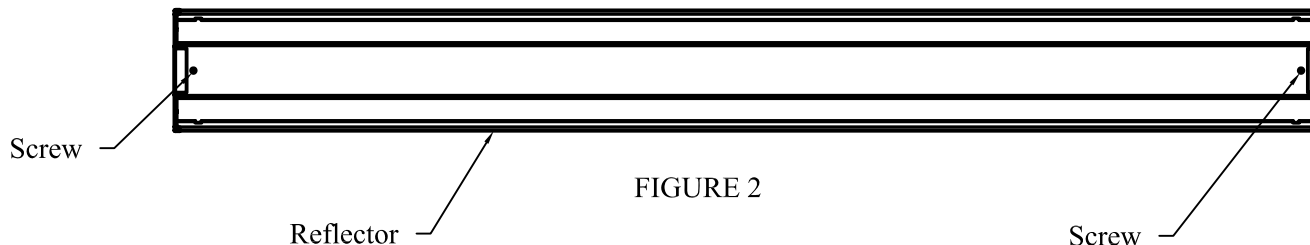


FIGURE 2

1. Remove Ballast Cover (**Figure 1**) and discard.
2. Attach Reflector to Housing and secure with 2 Screws (see kit bag) (**Figure 2**).

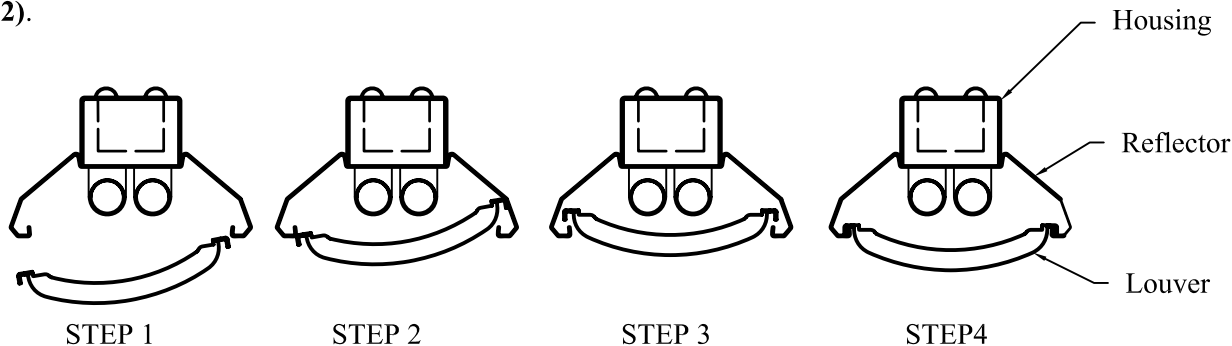
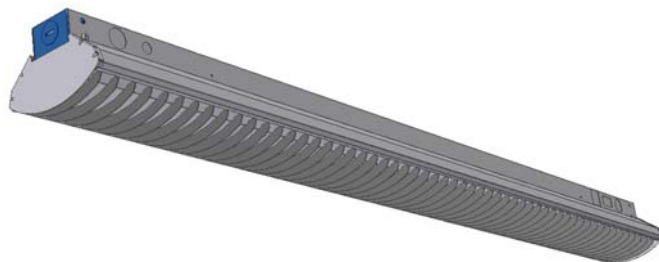


FIGURE 3

3. Insert Louver in Reflector (**Figure 3**). Follow steps 1 through 4 .



FINAL ASSEMBLY

LIGHTOLIER®

Lightolier is a Philips group brand

PHILIPS

Download from Www.Somanuals.com. All Manuals Search And Download.

LIGHTOLIER
 For Factory Technical Information: (978) 657-7600 • Fax (978) 658-0595
 631 Airport Road, Fall River, MA 02720 • (508) 679-8131 • Fax (508) 674-4710
 We reserve the right to change details of design, materials and finish.
 www.lightolier.com © 2008 a Philips Group

Free Manuals Download Website

<http://myh66.com>

<http://usermanuals.us>

<http://www.somanuals.com>

<http://www.4manuals.cc>

<http://www.manual-lib.com>

<http://www.404manual.com>

<http://www.luxmanual.com>

<http://aubethermostatmanual.com>

Golf course search by state

<http://golfingnear.com>

Email search by domain

<http://emailbydomain.com>

Auto manuals search

<http://auto.somanuals.com>

TV manuals search

<http://tv.somanuals.com>