



AST-220S

AST-220C

USER MANUAL

Part # 8100.0310

The AudioSource AST 220S and AST 220C were specifically designed for use in a Home Theater system. Additionally, this speaker system has been optimized to enhance the total theater experience with flat panel displays such as Plasma, LCD and DLP Projection and Rear Projection displays.



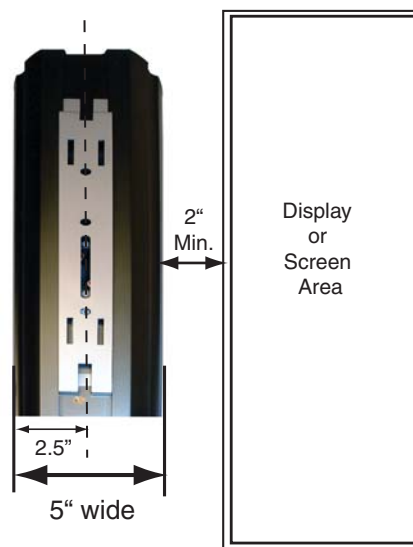
The AST 220S is designed to be used as the satellite speakers; left and right front as well as left and right side or rear speakers. They are designed to be wall mounted using the supplied brackets or they can be set up to be table mounted utilizing the supplied bases. One pair may be set up to be floor standing using the stands provided.

The AST 220C is the specifically designed for use as the front center channel speaker and can be mounted to the wall beneath the display using the mounting bracket provided or it may be table mounted on any flat surface using the Isolation Mounting Feet included with the AST 220C. These feet were custom molded to fit the bottom edge of the AST 220C and should be placed near either end in a manner that is aesthetically pleasing to the user. The molded surface has an adhesive layer that can be exposed by removing the protective paper layer once you have determined the placement of the feet for your intended use.

Placement of the Brackets

The placement of the brackets for the left and right front loudspeakers should be considered from the point of making the loudspeakers perform correct acoustically while maintaining an aesthetically pleasing appearance. The AST 220S has very wide dispersion characteristics in the horizontal plane. Therefore, the AST 220S loudspeakers may be mounted in close proximity to your display or screen area. We recommend that you leave a minimum of 2 to 3 inches between the edge of the display or screen area.

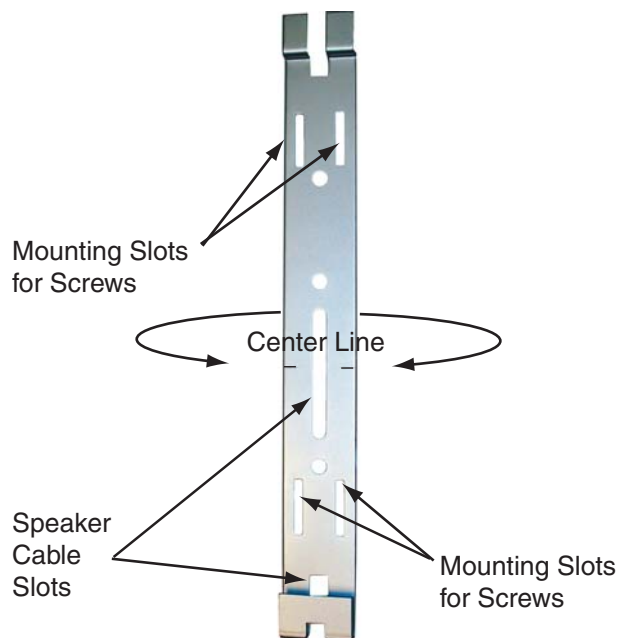
If you wish to extend the speakers beyond the 2" to 3" minimum that presents no problem. Please note that the distance between the right and left speakers should not be greater than the distance from the speakers to the listener's position.



Mounting the Wall Brackets

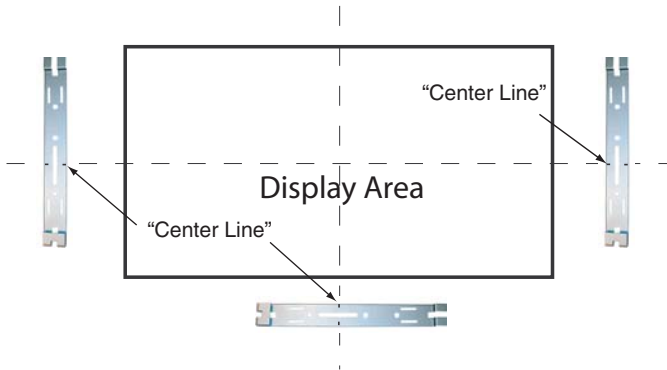
The wall mounting brackets are designed to be attached to the wall surface using screws. Where no underlying wall stud is available for proper placement it is highly recommended that an appropriate wall anchor be used. We do not recommend a particular type since many different wall surfaces may be encountered. If you are unsure as to which type of wall anchor to use consult with your local Hardware or Do-It-Yourself store specialist to determine the correct anchor for the type of wall surface in your home. *Note: the weight of an AST 220S or an AST 220C is 7.1 pounds.*

The wall mounting bracket has four slots to accept screws for attaching it to the wall surface. If you are locating the bracket over a wall stud these slots will fall within the width of a standard 2x4 or 2x6 wall stud. There is a slot at the bottom and in the middle of the bracket to allow the speaker cable to be brought through both the wall and the bracket to connect to the terminals on the rear of the AST 220S and the AST 220C loudspeakers.



The bracket for the AST 220S and AST 220C has a "Center Line" stamped into it, and indicates where the center of the speaker will be located when mounted onto the bracket. Use this "Center Line" to locate the brackets vertically. For the AST 220S loudspeakers and horizontally for the AST 220 C.

By drawing horizontal and vertical center lines through the area covered by the display you can use the "Center Line" of the brackets to properly center the speakers on the display in the horizontal and vertical planes. Use a level to keep the vertical brackets plumb and the horizontal bracket level.



Assembling the Base to the AST 220S

To attach the "Base" to the AST 220S, use a Phillips head screwdriver to remove the four screws from the bottom end cap of the AST 220S speaker.



Place the open end of the speaker into the base. Replace the four screws into the AST 220S. Start all four screws before fully tightening.



Note: If the screws do not seem to align properly with the four channels of the aluminum extrusion of the AST 220S, loosen the four Pan Head screws that retain the steel plate to the bottom of the "Base". (Do not remove these screws.) Re-align the base of the extrusion and tighten all screws. Be careful not to overtighten the screws and possibly strip the channel to the point the screws will not grip snugly.



Assembling the AST-Stands

If you wish to use a pair of the AST 220S speakers as floor standing speakers, they can be mounted to the AST-Stands in the following manner.

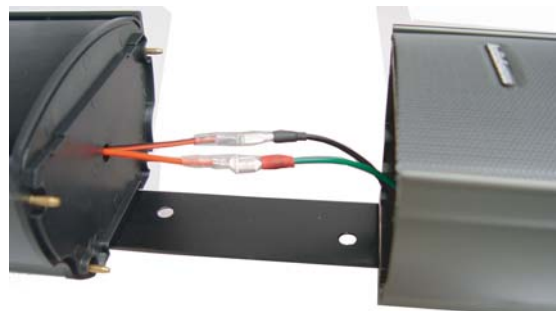
Mount the supplied bases to the AST-Stands as described in the section above "Assembling the Base to the AST 220S".

Next, remove the four screws from the bottom end cap of the AST 220S speaker, set the end cap and four screws aside. Please retain these parts for possible use later.

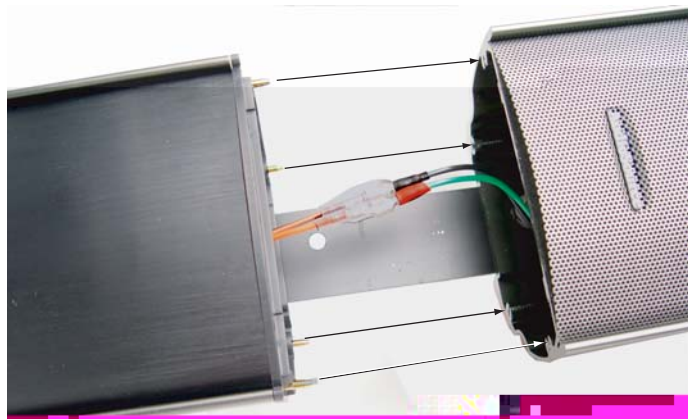
Next, insert the 1.5" x 9" metal support into the channel on the rear of the AST-Stand, and attach to the AST-Stand with two of the four supplied screws.



Find a pair of wires with slide-on connectors loose in the bottom of the AST 220S. These will mate with the two wires extending from the AST-Stands.



With the AST 220S and the AST-Stand lying flat, attach the two wires together, noting that the slide-on connectors are sized differently to maintain proper phase in the connection. Now, carefully slide the metal support into the channel on the rear of the AST 220S. Align the four brass pins extending from the top of the AST-Stand with the four channels on the inside of the AST 220S, and slide the two units together so that they fit tightly against the plastic spacer of the AST-Stand.



Now insert and tighten the two remaining screws attaching the metal support to the AST 220S.

You may now connect the speaker cable to the terminals at the bottom of the AST 220S / Stand combination.

Connecting the Speaker cable to the AST 220 speakers

Strip away 1/2 inch of the insulation on the Speaker wire and tightly twist the strands of each conductor together. If a soldering iron is available carefully tin the two conductors of each speaker cable.

Next, bend the exposed portion of the speaker cable to a 90° angle to the insulation.



Press down the top of the terminal and insert the speaker cable into the hole at the bottom of the connector in the direction of the closest end of the connector cup.



Always be careful to observe proper polarity, making sure to connect (+) to (+) and connect (-) to (-). Failure to do so will cause a loss of low frequency response and improper imaging.



Specifications

AST 220S Home Theater Satellite

- Plasma application "slim" wall mount design loudspeaker system
- Height 20" overall
- Dual 4.25" mid/woofers and poly treated silk dome tweeter
- Sensitivity: 89 dB/ @ 2.83V / 1m
- Impedance: 8 Ohm nominal
- Frequency Response: +/- 2.5 dB from 90-20 kHz (-6 dB @ 72 Hz.)
- Recommended safe amplifier power: 15 - 200 watts RMS
- CAD/CAE designed High order, Asymmetrical, Phase compensating, acoustical passive crossover
- 3.5" (90mm) D x 5.25" (133mm) W x 20.25" (514mm)H

AST 220C Home Theater Center Channel

- Plasma application "slim" wall mount design loudspeaker system.
- Length 20" overall
- Dual 4.25" mid/woofers and poly treated silk dome tweeter
- Sensitivity: 89 dB/ @ 2.83V / 1m
- Impedance: 8 Ohm nominal
- Frequency Response: +/- 2.5 dB from 90-20 kHz (-6 dB @ 72 Hz.)
- Recommended safe amplifier power: 15 - 200 watts RMS
- CAD/CAE designed High order, Asymmetrical, Phase compensating, acoustical passive crossover
- 3.5" (90mm) D x 5.25" (133mm) W x 20.25" (514mm)H

AST Stand Home Theater Floor Stand

- Home Theater application "Floor Stand" for AST 220S
- Height 47" overall
- Matching Aluminum Extrusion
- Floor Level Speaker Level Input
- 3.5" D x 5.25" W x 27" H

Free Manuals Download Website

<http://myh66.com>

<http://usermanuals.us>

<http://www.somanuals.com>

<http://www.4manuals.cc>

<http://www.manual-lib.com>

<http://www.404manual.com>

<http://www.luxmanual.com>

<http://aubethermostatmanual.com>

Golf course search by state

<http://golfingnear.com>

Email search by domain

<http://emailbydomain.com>

Auto manuals search

<http://auto.somanuals.com>

TV manuals search

<http://tv.somanuals.com>