
NextWindow
Pioneer DVD-V7300D
Touch Installation Guide



Table of Contents

Introduction	2
Configuring the Touch Screen.....	3
Connecting the Touch Screen to the DVD Player	4
Calibrating the Touch Screen	5

Copyright NextWindow Ltd. 2006. All rights reserved

V1.2

Introduction

Congratulations on your purchase of a NextWindow 2403 Touch Panel Overlay. This Guide explains a few simple steps to set up the touch screen to work with the following Pioneer DVD players:

Pioneer DVD-V7300D
Pioneer DVD-V7400D

(Note: For the Pioneer DVD-V5000, email support@nextwindow.com for further information.)

To install the touch overlay onto a display screen, see the *NextWindow Touch Panel Overlay 2403 Installation Guide* supplied with the product.

In addition to the components that came with the 2403 Touch Panel Overlay, you will need the following:

- Computer. For example, a laptop.
- NextWindow's USB Config program, which can be downloaded from NextWindow's website.
- Serial cable suitable for connecting the Pioneer DVD player to the touch screen.

Overview of Procedure

There are three parts to setting up the touch screen to work with the DVD player:

- Configure the touch screen.
- Connect the touch screen to the DVD player.
- Calibrate the touch screen.

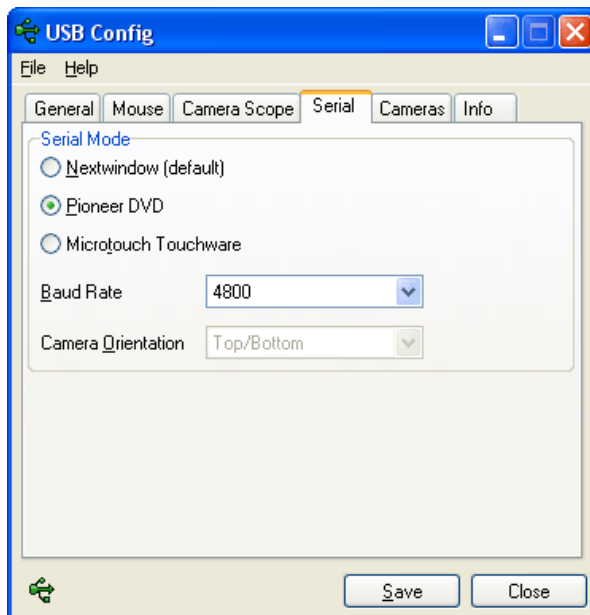
These steps are explained below.

Configuring the Touch Screen

To configure the touch screen, you need to run NextWindow's configuration program, USB Config, on a computer that is connected to the touch screen via a USB cable.

USB Config is part of the Touch+ software suite, which can be downloaded from NextWindow's website: <http://nextwindow.com/support/software/index.html>.

1. Connect the 12 VDC power to the touch screen.
2. Connect the USB cable from the PC to the touch screen. The Windows operating system will automatically detect the USB device.
3. Run USB Config and go to the Serial tab.



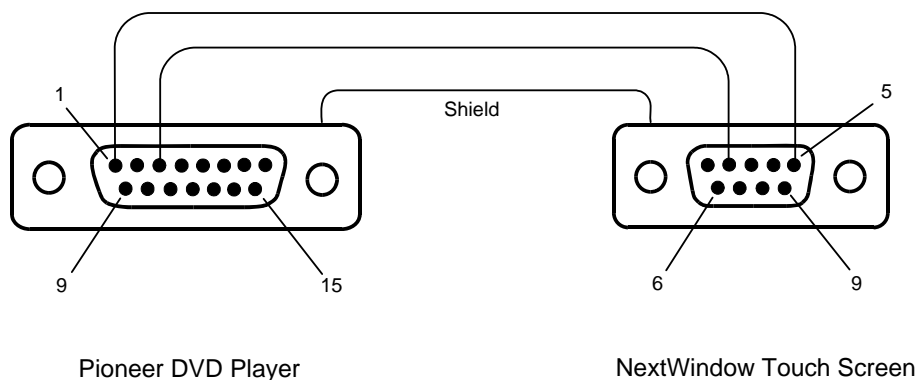
4. Select Pioneer DVD.
5. Click [Save].
6. Close USB Config.
7. Disconnect the USB cable so that the touch screen can communicate with the DVD player via the serial interface.

Connecting the Touch Screen to the DVD Player

Pioneer DVD players require a special serial cable with a 15-pin plug. This cable can be supplied by NextWindow or a third party.

The following table and diagram show the pin number connections (male connector).

DVD Players Pins		Touch Screen Pins
1	connects to	5
3	connects to	2
Shield	connects to	Shield



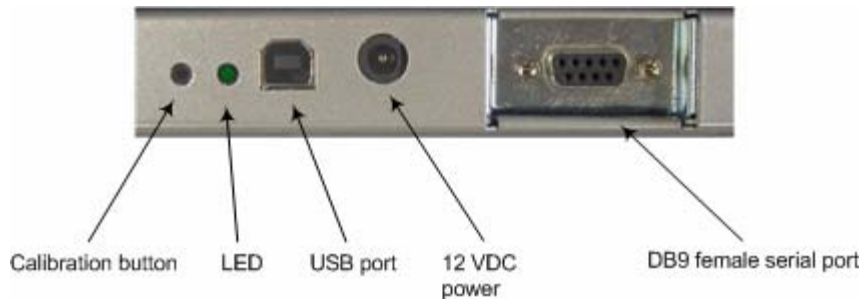
Connections

Before calibrating the touch screen, make sure the following connections are made:

- Serial connection between DVD player and touch screen (as described above).
- Video cable from the DVD player to the display screen.
- 12 VDC power to the touch screen connected and switched on.
- DVD player power connected and switched on.
- Display screen power connected and switched on.

Calibrating the Touch Screen

1. With all the components connected and switched on (as listed in previous section), press the calibration button on the back of the touch screen.



The program moves the pointer to a position at the top left of the screen

2. Touch and hold your finger at position indicated by the pointer until until you hear a long beep.
3. The pointer moves to three further positions in a sequence—touch each point in turn until you hear the beep.

This completes the calibration procedure. Test the calibration by touch the screen at different positions and check that the cursor follows you finger.

Note

- Place and remove your finger accurately at the touch points; do not drag it across the screen.

LED Colour Codes

Red	Calibration in progress (during calibration) or Touch in progress (during normal operation)
Flashing red	Touch screen error
Green	USB connected

Once the touch screen has been calibrated, it is ready for use with the interactive media application.

Free Manuals Download Website

<http://myh66.com>

<http://usermanuals.us>

<http://www.somanuals.com>

<http://www.4manuals.cc>

<http://www.manual-lib.com>

<http://www.404manual.com>

<http://www.luxmanual.com>

<http://aubethermostatmanual.com>

Golf course search by state

<http://golfingnear.com>

Email search by domain

<http://emailbydomain.com>

Auto manuals search

<http://auto.somanuals.com>

TV manuals search

<http://tv.somanuals.com>