

Pioneer

SOFTWARE ENTERTAINMENT CONTROLLER

SEP-C1

DJS Control Guide

DJS

■ DJS Control Guide

Please read the following sections of the SEP-C1 Operating instructions (printed version) thoroughly before using your SEP-C1: *“INSTALLATION GUIDELINES”*, *“CONNECTIONS”*, *“PARTS AND THEIR FUNCTIONS”* and *“USING DJ SOFTWARE”*.

It is necessary to install the driver software before connecting a SEP-C1 to your computer.

Please read the section *“ABOUT THE DRIVER PROGRAM”* in your SEP-C1 Operating instructions.

Install DJS and when you wish to use it, please be sure to read the conditions of the Software End User License Agreement. For more information on the DJS Software End User License Agreement, its minimum operating environment, installation procedures, and the Operating instructions (PDF file) please refer to the section, *“ABOUT DJS SOFTWARE”* in your SEP-C1 Operating instructions.

Table of Contents

Chapter 1 Controlling DJS

1-1	Connecting to your SEP-C1 to a computer	3
1-2	Operating a DJS Player	4
1-3	Operating a DJS List	5
1-4	Operating the DJS Mixer	6
1-5	Operating the DJS Effector	7

Chapter 2 Upgrading SEP-C1

2-1	User Registration	8
2-2	Updating the Firmware	9

Using the Support Site	10
Trial Period and User Registration	10

- Copying of copyrighted materials such as music is unlawful unless permitted by a legal exception or consented to by the rightowners.

Music recorded from CDs, etc. is protected by the copyright laws of each country, as well as by international agreements. The person who makes such a recording, himself, bears full responsibility for legal compliance in the use thereof.

* Pioneer and DJS are trademarks or registered trademarks of the Pioneer Corporation.

* Microsoft and Windows are registered trademarks of the Microsoft Corporation of the United States and other countries. The formal name of Windows is the Microsoft Windows Operating System.

* MPEG Layer-3 audio coding technology licensed from Fraunhofer IIS and Thomson multimedia.

Supply of this product only conveys a license for private, non-commercial use and does not convey a license nor imply any right to use this product in any commercial (i.e. revenue-generating) real time broadcasting (terrestrial, satellite, cable and/or any other media), broadcasting/streaming via internet, intranets and/or other networks or in other electronic content distribution systems, such as pay-audio or audio-on-demand applications. An independent license for such use is required. For details, please visit <http://www.mp3licensing.com>.

* All other company names and names of products are either the trademarks or registered trademarks of their respective company(ies).

©2008 PIONEER CORPORATION. All rights reserved.

Chapter 1 Controlling DJS

It is necessary to install the driver software before connecting a SEP-C1 to your computer. Please do not connect the SEP-C1 to your computer until you have finished installing the driver software.

For information on how to install the driver software, please refer to **“ABOUT THE DRIVER PROGRAM”** in the Operating Instructions of your SEP-C1.

When 2 or more SEP-C1s are connected

If you connect two or more SEP-C1s to your computer, only the first SEP-C1 will be able to operate DJS.

1-1 Connecting to your SEP-C1 to a computer

Connect the SEP-C1 to your computer with a USB cable and a USB auxiliary power cable. For information on each of the cables that come with the SEP-C1 as well as each type of the SEP-C1's cable jacks, please refer to **“CONNECTIONS”** in the operating instructions of your SEP-C1.

- 1** Connect the 5V connector on the back of your SEP-C1 to the USB port on your computer with a USB auxiliary power cable.

- 2** Connect the PC connector on the back of your SEP-C1 to the USB port on your computer with a USB cable.

- 3** Start up your computer.
 - It is also possible to start up your computer first and then make the connections to your SEP-C1.

Warning!

Updating your Version of DJS

In order to use your SEP-C1 in conjunction with DJS, it is necessary to update DJS to version 1.600 or later. Please refer to the DJS User's Manual for directions on how to update your version of DJS.

→ [‘Using the Support Site’](#)

Warning!

SEP-C1 Power Supply

The power for the SEP-C1 is supplied from a USB port on your computer. Connect the USB cable and USB auxiliary power cable directly to your computer's USB ports. Do not connect them to a USB hub or any other kind of USB splitter.

Starting up DJS

Start up DJS after making the connections to the of your SEP-C1. Also, take care to close DJS before disconnecting of your SEP-C1.

1-2 Operating a DJS Player

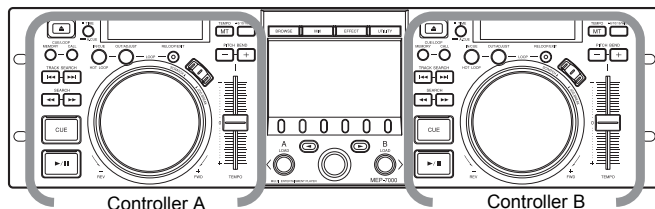
You can use your SEP-C1 to operate either Player A or Player B on the [DJ Play] screen.

1 Start up DJS.

- Once DJS starts up, the [DJ Play] screen is displayed.

2 Operate either Controller A or Controller B.

- When you operate the various controls on your SEP-C1, such as the jog dial or the tempo control slider, it operates the player in the [DJ Play] screen.



Functions that are Linked with the [DJ Play] Screen (Player Functions)

SEP-C1 Operation Buttons	Controls Linked on the [DJ Play] Screen
PLAY/PAUSE	PLAY/PAUSE Button
CUE	CUE Button
SEARCH	SEARCH Buttons
TRACK SEARCH	TRACK SEARCH Buttons
TIME/A.CUE	TIME MODE / AUTO CUE Button
IN/CUE	IN/CUE Button
OUT/ADJUST	OUT/ADJUST
RELOOP/EXIT	RELOOP/EXIT
MASTER TEMPO	MASTER TEMPO Button
TEMPO ±6/10/16/WIDE	TEMPO Control Range Button
TEMPO	TEMPO Control Slider
JOG (-REV/+FWD)	Jog Dial
PITCH BEND	PITCH BEND Button
SCRATCH	SCRATCH Button

For information on functions of buttons, please refer to *“Parts and Their Functions”* in the SEP-C1 operating instructions and in the DJS User Manual.

Note

Spin (when in scratch mode)

If you spin the jog dial of your SEP-C1 very quickly, even after you let go of it, it will continue playing at the speed and in the direction that the jog dial is rotating until it stops. You cannot do this spin play with the mouse.

Simultaneous Operations

The following operations can be performed at the same time from the SEP-C1.

- If you rotate the jog dial while holding down the SEARCH button, it accelerates the search play speed.
- While playing a cue point sample, if you hold down the CUE button, you can operate controls like the jog dial or the PITCH BEND button.
- When playing a cue point sample, if you hold down the CUE button and the press the PLAY button, even if you let go of the CUE button, it keeps on playing without returning to the cue point.
- When playing a cue point sample, if you hold down the CUE button and press a loop operating button (IN/CUE), the playback point is recorded as the cue point. When you release the CUE button, it returns to the cue point and stands by.
- When you are in the SCRATCH JOG mode, if you hold down the jog dial and press the CUE button, the playback point is recorded as the CUE point. When you release the jog dial, it returns to the cue point and stands by.
- When in the SCRATCH JOG mode, if you hold down the jog dial and press a loop operating button (IN/CUE), the playback point is recorded as the cue point. Even when you release the jog dial, it continues playing without returning to the CUE point.

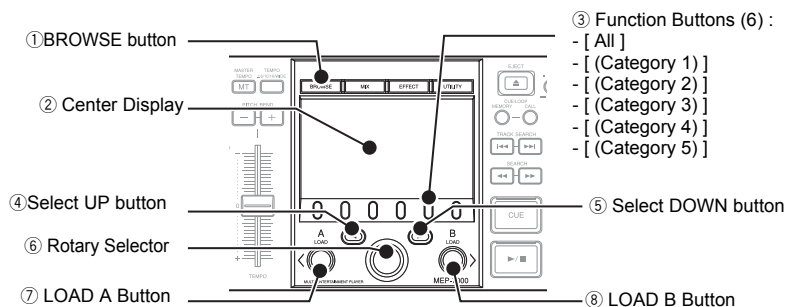
Unlinked Player Functions

The following SEP-C1 buttons do not link up with the [DJ Play] screen.

- CUE/LOOP MEMORY Button
- CUE/LOOP CALL Button
- JOG DIAL Button
- EJECT Button

1-3 Operating a DJS List

You can use the SEP-C1 to operate track lists or play lists on the [DJ Play] screen.



1 Press the BROWSE button.

2 Operate the track list or play list.

- You can use the controls of your SEP-C1, like the function buttons, the rotary selector, select DOWN or UP buttons to work with the track list or play list that is displayed in the [DJ Play] screen.
- Connect the USB port on the back of your SEP-C1's control unit to a USB port on your computer with a USB cable.

Selecting a category (only with track lists)

The headers that are displayed at the top of the category column in the track list on the [DJ Play] screen, namely [All] and the five categories, are automatically assigned to the six function buttons. When you press a function button, the songs in the corresponding category are displayed.

Aligning the selected line with the song you want to play

SEP-C1 Operation Buttons	Functions that are Linked with the [DJ Play] screen
Rotary Selector (Rotate)	Rotate it clockwise and the selected line moves downwards. Rotate it counterclockwise and the selected line moves upwards.
Select DOWN button (Push)	If a list is closed, it opens the list. If a list is open, the line moves to the right.
Select UP button (Push)	If a list is open, the line moves to the left. If you move it to the last line on the left, it closes the list.
Rotary Selector (Rotate)	If the selected line is on a category, such as genre, artist/album, etc., it displays the list of songs in the selected category. If the selected line is on a song, the three choices, [CANCEL], [LOAD A] and [LOAD B] are shown on the center display.

3 After lining up the selected line on the song you wish to play, press either the LOAD A or the LOAD B button.

- LOAD A Button (Loads a song) :**
The selected song is loaded onto DJ Player A.
- LOAD B Button (Loads a song) :**
The selected song is loaded onto DJ Player B.

Using the Rotary Selector

You can use the rotary selector dial for operations instead of pressing the LOAD A or LOAD B buttons.

- With the selected line on the song you wish to play, if you press the rotary selector, the three choices [CANCEL], [LOAD A] and [LOAD B] are displayed in the center
- Rotate the rotary selector dial to select [LOAD A] (or [LOAD B]) and then when you press the rotary selector dial, the selected song is loaded on Player A (or Player B).

Note

Track Lists and Play Lists

The format of music lists can be switched on the [Play Style] settings screen in DJS Preferences. On the settings menu on the left hand side of Preferences, click [Play Style] to open the [Play Style] settings screen.

BROWSE Button

If you press the BROWSE button, the BROWSE screen is displayed in the center display.

Function Button

In the [BROWSE] screen the function for directly selecting and displaying a category is assigned.

Note

Display of Category Columns

The category columns on the [DJ Play] screen are displayed in the order of [All], [Artist-Album], Top Category and Other Categories. The display order of the Top Category can be switched by dragging and dropping it on the [DJ Play] screen.

Vertical Scrolling

If you move the selected line to the top (or the bottom), the list will scroll vertically and display the selected line.

When using a play list

When the format of the music list is in Play List, the line cannot be moved to the left or right. If you press the select DOWN button, the list gets wider; if you press the select UP button, the list gets narrower.

Note

When using a play list

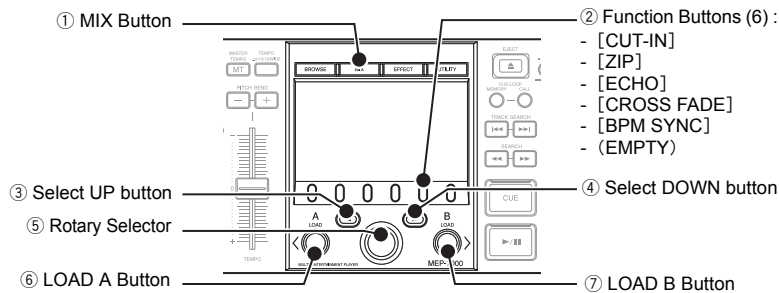
When the format of the music list is in Play List, the selected song is loaded and goes into standby mode.

LOAD LOCK Settings

When the SEP-C1's LOAD LOCK settings is ON, songs cannot be loaded onto the player that is currently playing. Songs can only be loaded when the player is in either standby or paused. For information on turning the LOAD LOCK setting ON/OFF, please refer to "**USING THE UTILITY**" in your SEP-C1 Operating Instructions.

1-4 Operating the DJS Mixer

You can use the SEP-C1 to operate the mixer on the [DJ Play] screen in DJS.



1 Press the MIX button.

2 Set the mixing parameters.

- Use the function buttons, select UP button, and select DOWN button to set up mixing.

Functions that are Linked with the [DJ Play] Screen (Mix Functions)

SEP-C1 Operation Buttons	Functions that are Linked with the [DJ Play] screen
Function [CUT-IN]	MIX Mode : CUT-IN
Function [ZIP]	MIX Mode : ZIP
Function [ECHO]	MIX Mode : ECHO
Function [CROSS FADE]	MIX Mode : CROSS FADE
Function [BPM SYNC]	The playback speed for the slave is merged to that of the master.
Select UP Button	BEAT ADJUST : Player A
Select DOWN Button	BEAT ADJUST : Player B

3 Press either the LOAD A or the LOAD B button.

• **LOAD A Button (Start Mix or Auto Mix) :**

Starts the cross fader in the [DJ Play] screen moving from the Player B side toward Player A. When Player A is the master, it does not start moving. While it is moving, if you decide you want to return in the other direction, press the LOAD B button.

• **LOAD B Button (Start Mix or Auto Mix) :**

Starts the cross fader in the [DJ Play] screen moving from the Player A side toward Player B. When Player B is the master, it does not start moving. While it is moving, if you decide you want to return in the other direction, press the LOAD A button.

Specify the speed of cross fader movement (beats).

The cross fader movement speed (beats) can be specified for each mix mode. If you press the rotary selector, the menu for selecting the possible beats is displayed on the [DJ Play] screen; rotate the rotary selector to your selection and then press the rotary selector.

Manual Operation of the Cross Fader

Instead of pressing the LOAD A or the LOAD B buttons, you can rotate the rotary selector to manually move the cross fader. Rotating it clockwise moves the cross fader's slider to the right, counterclockwise to the left. During a Mix or even an Auto Mix, you can rotate the rotary selector to move the cross fader manually.

Note

DJS Mixer Functions (Internal Mixer)

When you use the DJS mixer functions, it makes the DJS settings on the internal mixer. For more information, please refer to sections "1-1 Using the DJS Mixer Function" and "8-4 Mixer and Sound Card Settings" in your DJS User's Manual.

MIX Button

If you press the MIX button, the MIX screen is displayed in the center display.

Function Buttons

On the [MIX] screen, four mix mode selections and BPM sync are assigned.

When using an external mixer

Only the BPM sync function can be used when the DJS mixer is set to an external mixer.

Note

Master & Slave

The first player that starts playing is the master, the other player becomes the slave. The master and slave switch roles under the following circumstances.

- When the cross fader is moved all the way to the slave side
- When the master is paused while both players are playing together
- When the song on the master is changed while both players are playing together

BEAT Adjust (Player A - Player B)

While listening to the song being played, set the beat location. Press either the select UP or the select DOWN button on the first beat of a 4-count.

Switching between MIX and AUTO MIX

Toggle between Mix and Auto Mix by right-clicking on either the [Mix] or the [Auto Mix] button on the [DJ Play] screen.

Mix

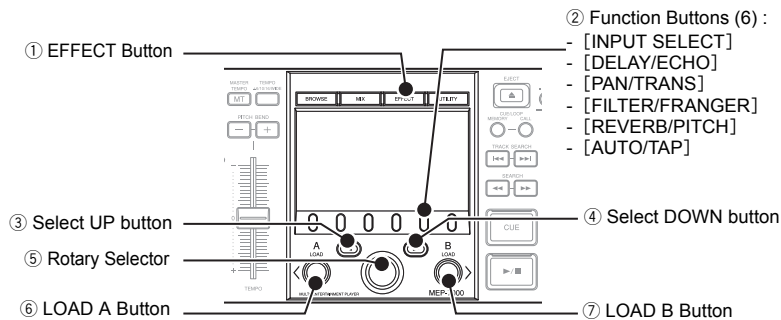
The cross fader moves in the specified number of beats.

Auto Mix

The cross fader moves in the specified number of beats. During Auto Mix, the playback speed and beat position of the slave are automatically synchronized with the playback speed and beat position of the master.

1-5 Operating the DJS Effector

You can use the SEP-C1 to operate the Effector on the [DJ Play] screen in DJS.



1 Press the EFFECT button.

2 Set the effect parameters.

- Use the function buttons, LOAD A button, LOAD B button, select UP and select DOWN buttons to make the settings.

Functions that are Linked with the [DJ Play] Screen (Effect Functions)

SEP-C1 Operation Buttons	Functions that are Linked with the [DJ Play] screen
Function [INPUT SELECT]	Switches Channels : Channel A, Channel B, Master
Function [DELAY / ECHO]	Select Effect : Delay / Echo
Function [PAN / TRANS]	Select Effect : Pan / Trans
Function [FILTER / FRANGER]	Select Effect : Filter / Franger
Function [REVERB / PITCH]	Select Effect : Reverb / Pitch
Function [AUTO / TAP]	Switches BPM Display : AUTO / TAP
LOAD A Button	TAP Input
LOAD B Button	TAP Input
Select UP Button	Effect Beat : Down
Select DOWN Button	Effect Beat : Up

3 Operating with the Rotary Selector

- If you rotate the rotary selector, you can adjust the level and depth of effects (balance between the original music on the selected channel and the sound effect of the selected effect).
- If you press the rotary dial, the effect comes ON and the sound effect is output on the selected channel. Pressing it again makes the effect go OFF.

Note

EFFECT Button

If you press the EFFECT button, the EFFECT screen is displayed in the center display.

Function Buttons

In the EFFECT screen, the eight effect selections, channel switching and BPM display switching are assigned.

When using an external mixer

The EFFECT screen cannot be used when the DJS mixer is set to an external mixer.

Note

Channel Switching

Select the channel for applying the sound effects, from among channel A, channel B and the master.

Effect Selection

You can select from the eight kinds of effects that are assigned to the four function buttons.

BPM Display Switch

You can select a BPM (beat per minute) display that is either AUTO or TAP.

BPM (AUTO)

The BPM value that is detected in the song on the selected channel is displayed.

BPM (TAP)

When you press either the LOAD A or LOAD B button twice or more in succession, the interval between presses is displayed as the BPM.

Effect Beat

The cycle (timing) of the sound effects, such as reverb, transition and echo, is set based on the displayed BPM. This cycle (timing) can be adjusted using the select UP or the select DOWN buttons. However, if the pitch is selected in the effect selection, you can use the select UP or select DOWN buttons to adjust the pitch.

Chapter 2 Upgrading SEP-C1

The software that is originally incorporated into hardware products such as the SEP-C1 and is used to control the hardware is called firmware. Once you complete the DJS user registration process, you can update the version of your SEP-C1's firmware.

Before registering the user and updating the firmware version...

Log on to your computer as a user with administrator privileges and connect the computer to the internet.

2-1 User Registration

The trial period for using DJS without registering a user is 60 days. Once this period expires, you will not be able to use DJS. So, please complete user registration within sixty days of installing DJS. Once you complete user registration, support services such as version updating become available to you. → [‘Using the Support Site’](#)

- 1 After clicking [Help] on the DJS menu, click [User Registration].
 - Once you click [User Registration], the [User Registration Selections] screen opens.

- 2 After the [User Registration Selections] screen opens, click [Online Registration] and then [Next].
 - After you click [Next], the [Online Registration] screen opens.



If you don't have internet access (Offline Registration)

If for some reason, such as not having internet access, you cannot register online, please fill out the User Registration Card with your key code and the necessary information and mail it in. After we receive your user registration card at our offices, we will send you a registration ID so you can release the trial period.

→ [‘Trial Period and User Registration’](#)

- 3 Fill in the required information on the [Online Registration] screens and then click [Send].
 - [Online Registration] consists of three screens, namely User Information 1/2, User Information 2/2 and a Confirmation of Information screen.
 - When you click [Send], the information you entered will be registered on our server and the [Registration ID Complete] message will be displayed.

- 4 After the [Registration ID Complete] message is displayed, click [OK].
 - Once you click [OK], the [Registration ID Complete] message closes.

Warning!

In Windows Vista

Follow the steps below to make the administrator settings.

1. Log on as a user who has been established as the administrator for the computer.
2. Right click the [DJS] shortcut icon on the desktop and then click on [Properties].
3. Click the [Compatibility] tab in the [DJS Properties].
4. Click on [Run this program as the administrator.] so the check box is ON.
5. Click [OK] and then close the [DJS Properties] window.

Note

After the Trial Period Ends

Once the 60 days elapse, DJS will not start up and a message prompting you to register a user is displayed.

Note

Privacy Protection Policy

The personal information of our customers is collected by the Pioneer Group for the following purposes.

1. In order to provide after sales service on purchased products.
2. In order to send our customers emails with important information about our products or related events.
3. In order to reflect the results of customer questionnaires in our product design.

Pioneer maintains strict controls over the personal information we collect from our customers, in line with our Privacy Protection Policy. To view the Pioneer Privacy Protection Policy, please visit our home page at (<http://www.prodjnet.com/privacy.html>).

Offline Registration (Key Code Display)

After you click [Offline Registration] and [Display Key Code], when you click [Next], the [Key Code] screen opens. Write the key code on the User Registration Card and mail it.

Offline Registration (Entering the Registration ID)

After you click [Offline Registration] and [Enter Registration ID], when you click [Next], the [Enter your Registration ID] screen opens. Please enter the registration ID that we sent to you.

Warning!

User Information (Login Name and Password)

Please take care so you do not forget the Login Name and Password you entered as user information because you will need them in order to receive service, such as for updating software versions, etc.

2-2 Updating the Firmware

You can use DJS to update the firmware of your SEP-C1 to the latest version. In order to download the update package and run the update program, connect your computer to the internet and Log on as a user who has been set up as a computer administrator.

Before Updating the Version of the Firmware

If you have not complete the user registration process, you will not be able to run the updater for your SEP-C1.

Consequently, please complete user registration. → '2-1 User Registration'

Before starting up DJS, connect your SEP-C1 and your computer with an auxiliary USB power cable and then connect the SEP-C1 and the computer with a USB cable.

→ '1-1 Connecting to your SEP-C1 to a computer'

When you have two or more SEP-C1s

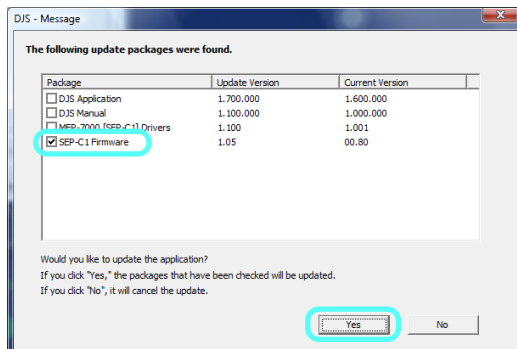
It is not possible to update more than one SEP-C1 at a time. So please connect one unit to your computer at a time.

1 After clicking [Help] on the DJS menu, click [Version Up].

- Once you click [Version Up], it checks our server for whether there is an update package or not; if there is, the [Update Package Detected] screen opens.
- If there is not an update package newer than the version currently being used, it is not possible to update the software.

2 After the [Update Package Detected] screen opens, click the [SEP-C1 Firmware] check box ON and then click [Yes].

- Once you click [Yes], the update package start downloading. Once the download finishes, the [Starting Version Update] message opens.



3 After the [Starting Version Update] message is displayed, click [OK].

- Once you click [OK], the update starts. Once the update finishes, the [Update Complete] message opens.

4 After the [Update Complete] message is displayed, click [OK].

- Once you click [OK], the [Update Complete] message closes.

5 After closing down DJS, remove both the USB auxiliary power cable and the USB cable from your SEP-C1 and your computer.

Warning!

In Windows Vista

Follow the steps below to make the administrator settings.

1. Log on as a user who has been established as the administrator for the computer.
2. Right click the [DJS] shortcut icon on the desktop and then click on [Properties].
3. Click the [Compatibility] tab in the [DJS Properties].
4. Click on [Run this program as the administrator.] so the check box is ON.
5. Click [OK] and then close the [DJS Properties] window.

Before connecting your SEP-C1

It is necessary to install driver software on your computer. Please do not connect the SEP-C1 to your computer until you have finished installing the driver software. For information on how to install the driver software, please refer to "ABOUT THE DRIVER PROGRAM" in the Operating Instructions of your SEP-C1.

Note

Login Name and Password

Once you access our server, you will prompted for the Login Name and the Password you specified when you registered as a user.

Note

Multiple Update Packages

If update packages other than the firmware for your SEP-C1 are detected, such as for the DJS software, the manual, SEP-C1 driver software, and so on, they will be displayed all together in the [Update Package Detected] screen. If you click their check box(es) and select them, the selected update packages are downloaded and one update runs after another.

Update package detected when DJS starts up

If you log on to your computer as a user with administrator privileges and your computer is connected to the internet and your SEP-C1 is connected to your computer, every time you start up DJS, it will check our server to see if there are any update packages; if there are, the [Update Package Detected] screen will open.

Note

Starting and Finishing Updates

If you selected more than one update package, the Starting Update and Update Complete messages are displayed repeatedly. If an update package for DJS software is selected, DJS will close temporarily and then start back up automatically.

Checking the Firmware Version

For information on how to check your SEP-C1's firmware version, please refer to "USING THE UTILITY" in the SEP-C1 Operating Instructions. If you fail to close down DJS and completely disconnect your SEP-C1 and the computer, the firmware upgrade will not take effect.

■ Using the Support Site

Before contacting us about how to use DJS or with technical questions, please check the User's Manual recorded on the DJS CD-ROM as well as the FAQ on the DJS support site.

- To connect to the DJS support site, click [File] on the DJS menu and then click [Internet].
When using the DJS support site, it is necessary to enter the login name and password you specified when you registered as a DJS user.
- When using the DJS support site, please have the following details at hand when you contact us: customer's name, product name, installation key, model and specs of the computer (CPU, amount of memory, peripheral devices connected, etc.), version of the operating system and a detailed description of the problem you are experiencing.
- We are only able to provide support for DJS users who have completed user registration. Please take care of the login name and password you specified during user registration in the same way as the installation key and registration ID so you do not forget them.
 - * For information about installation of DJS or how to complete user registration, please refer to the User's Manual that is recorded on the DJS CD-ROM.
- If you experience difficulties in installing the software or completing user registration, please refer to our home page on the internet.

Information on Installation and User Registration

<http://www.prodjnet.com/djs/support>

- * If you have questions about your computer, peripheral devices or technical questions, such as about combinations with products other than those we support, please check with the manufacturer of the device or contact the sales outlet.
- There are DJS version updates scheduled in order to improve the performance and add functionality. By completing the user registration, you not only gain access to our support site, but it also allows you to download the updater program. By all means update your version of DJS with this updater program so you can always have the latest version to use.

■ Trial Period and User Registration

DJS has a trial period, which lasts for 60 days after installing the software. This trial period is the length of time you can use DJS without registering as a user. Once this trial period expires, you will not be able to enjoy using DJS anymore, so be sure to complete user registration within 60 days of installing the software.

- Online user registration is available for our customers who are connected to the internet.
 - '[2-1 User Registration](#)'
- If you do not have an internet connection, please fill out the required information on the oUser Registration Card and mail it in.
 - '[Addressing the User Registration Card](#)'
 - '[User Registration Card](#)'

Precautions about Filling in the User Registration card

- A login name and a password are required in order to make sure of your identity when using our customer support service.
- Please specify an 8 to 10 digit alphanumeric login name and password in the appropriate columns on the user registration card.
- Please affix the Installation Key Sticker for User Registration in the Software Installation Key box on the user registration card.
- Please enter the language you selected when you installed DJS in the Software Language box on the user registration card. The 8 languages are English, French, German, Italian, Dutch, Spanish, Traditional Chinese and Japanese.
- You can check your Key Code on the DJS screen. → '[Offline Registration \(Key Code Display\)](#)'
- Transfer the 8 digit alphanumeric code shown on the screen into the Key Code column of the user registration card.
- Please print neatly so it is possible to distinguish between 1 and 7, 1 and the letter I and between 2 and the letter Z. Also, please enter the number 0 (zero) with a diagonal line so it may be distinguished from the letter O.

After we receive your user registration card at our offices, we will send you a registration ID so you can release the trial period.

→ '[Offline Registration \(Entering the Registration ID\)](#)'

Addressing the User Registration Card

The addresses for user registration cards are as follows. Please take care to use the address appropriate to where you live as each region has its own address.

North America

PIONEER ELECTRONICS (USA) INC.
BUSINESS SOLUTIONS DIVISION, PRO AUDIO GROUP
2265 East 220th Street, Long Beach, CA 90810, U.S.A

Europe

PIONEER EUROPE NV
MULTIMEDIA DIVISION
Pioneer House, Hollybush Hill, Stoke Poges, Slough SL2 4QP U.K.

South Asia, Southeast Asia

PIONEER ELECTRONICS ASIACENTRE PTE. LTD.
MULTIMEDIA DEPARTMENT
253 Alexandra Road, #04-01, Singapore 159936

Hong Kong

PIONEER (HK) LIMITED
SALES AND MARKETNG DEPARTMENT
Suite 901-906, 9th Floor World Commerce Centre, Harbour City 11 Canton Road, Tsim Sha Tsui Kowloon, Hong Kong

Taiwan

PIONEER HIGH FIDELITY TAIWAN CO., LTD.
SALES DIVISION, INDUSTRIAL ELECTRONIC SECTION
13F, No. 44, Sec. 2, Jhongshan N. Road, Taipei City, Taiwan

Oceania

PIONEER ELECTRONICS AUSTRALIA PTY. LTD.
178-184 Boundary Road, Braeside, Victoria 3195, Australia

Middle East, Africa

PIONEER GULF, FZE.
Lob 11-017, Jabel Ali Free Zone, P.O.Box 61226, Jabel Ali, Dubai, U.A.E.

Central & South America

PIONEER INTERNATIONAL LATIN AMERICA, S.A.
SALES DEPARTMENT
Plaza Credicorp Bank Panama, 50 Street, #120, 14th Floor
P.O. Box 0816-01361, Panama, Rep of Panama

Mexico

PIONEER ELCTRONICS DE MEXICO, S.A. DE C.V.
Bld. Manuel Avila Camacho No. 138, Piso 10, Col. Lomas de Chapultepec, Mexico, D.F. C.P. 111000 Deleg. Miguel Hidalgo

User Registration

(Pioneer Use Only: Your Registration ID _____)

※ Thank you for purchasing this PIONEER product! Please complete the following and address to PIONEER. Information indicated by **bold text** is required for registration. When registered, we will send your Registration ID to you by mail. Do not forget these answers.

- ① **Login name**
(at least 8 and not more than 10 characters) _____
- ② **Password**
(at least 8 and not more than 10 characters) _____
- ③ **Software Installation Key** _____ Please paste Installation Key sticker
- ④ Software name and version number _____
- ⑤ **Software language** _____
- ⑥ **Key Code** _____
- ⑦ E-mail address _____

Pioneer collects information about our customers for the following purposes only.

1. To provide user support services.
2. To provide customers with information on products and events by e-mail.
3. To collect questionnaires, analyze them, and use the results for product planning.

* Private information collected from users is strictly protected in accordance with our Privacy Policy.

* Please see our policy for protecting your personal information, which may be found on our home page at ([http:// www.prodjnet.com/privacy.html](http://www.prodjnet.com/privacy.html)).

PIONEER CORPORATION

Questionnaire (Your answers will remain confidential and will be used to make product Improvements, so that we may better serve you.)

- ① Dealer _____ ② Sex Male Female ③ Age _____
- ④ Your favorite club
(Location) _____ (Club) _____
- ⑤ Which of the following best describes yourself ? (Please select one)
- Club DJ Mobile DJ Bedroom (Hobby) DJ
 Owner (Shop type: _____) Other _____
- ⑥ How long have you been engaged as a DJ? _____ year(s)
- ⑦ What kind of music will you play on the DJS?
- House Trance Jungle/Drum & Bass Ambient Hip-Hop/Rap Jazz
 Dance Classic Rock Techno Alternative Break Beat Funk
 Garage Latin R&B Swing Old School Wave Other _____
- ⑧ What magazines do you subscribe to?
1. _____ 2. _____ 3. _____
- ⑨ How did you learn about this product?
- Catalog Music instrument shop Audio shop
 Show PC shop Pioneer homepage Dealer's homepage
 Friend Magazine Other _____
- ⑩ Why did you decide to buy this product?
- Price Size Function Easy operation
 Reliability Design Brand Other _____

※ Thank you for your answers. Once the user registration is complete, we will send you a registration ID that will allow you override the 60 day trial period. **Please write your name, address and phone number below.**

First Name _____ Middle Name _____ Last Name _____
Address _____
State, Province _____ Postal Code _____ Country _____
Telephone _____ FAX _____

Free Manuals Download Website

<http://myh66.com>

<http://usermanuals.us>

<http://www.somanuals.com>

<http://www.4manuals.cc>

<http://www.manual-lib.com>

<http://www.404manual.com>

<http://www.luxmanual.com>

<http://aubethermostatmanual.com>

Golf course search by state

<http://golfingnear.com>

Email search by domain

<http://emailbydomain.com>

Auto manuals search

<http://auto.somanuals.com>

TV manuals search

<http://tv.somanuals.com>