

2010

Pioneer V6000 & V8000 BD/DVD Controller



VIS Visual Information System

Ltd

Broadcast

5/5/2010

FRONTNICHE DVD CONTROLLER

The Frontniche DVD controller is a software solution that allows you to remotely control your device with ease.

The thought behind the design and the use of the DVD controller node, was to make it as easy for the user without the complexity of configuring the device. With recognizable buttons, as you would see when using the remote.

The Frontniche DVD controller is compatible with the listed devices below:

LIST OF COMPATIBLE DEVICES:

Pioneer DVD:

Pioneer DVD 8000 Professional player

Pioneer Blue Ray:

Pioneer BDP V6000 Blue Ray Professional player

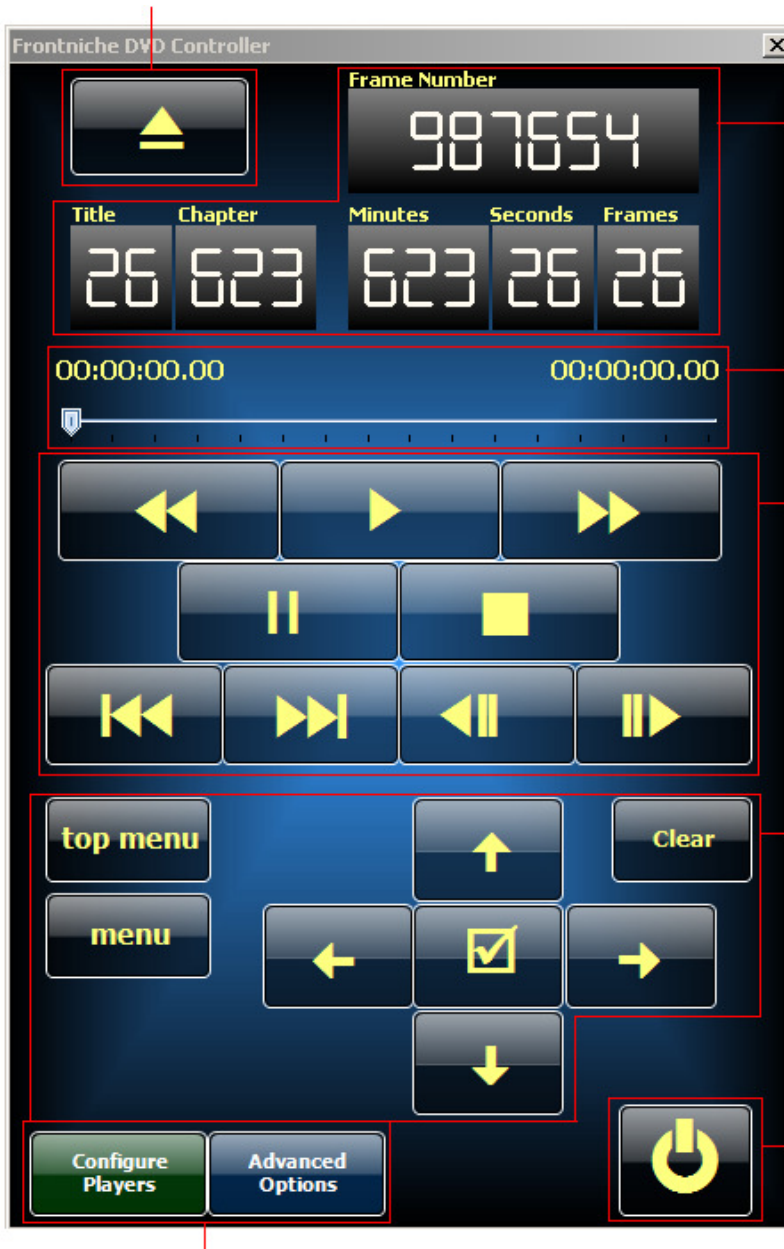
The DVD controller is designed to control many devices. More devices will be implemented when they are available. Refer to the device list in the manual for the latest update in devices.

FRONT PANEL VIEW

Frontniche DVD controller provides essential information about the media content.

Frontniche DVD controller provides information such as Frame Number, Title, Chapter, Minutes, Seconds & Frames.

EJECT button allows you to open or close the DVD tray remotely.



Displaying disc information:

The display window will display the *Track, Chapter, Title and Frame Number* information of the disc.

This allows you to manually select the timeline of the media you want the play to start from.

Time Line Bar:

This will allow to move the arrow into or around the area of the media you want.

Basic Operation buttons:

These buttons provide the basic function required to playback, stop, pause, fast forward, skip chapter and scan forward or in reverse.

DVD-Video disc contains menus allowing the direct selection and viewing of specific parts of the disc. Menus may contain subtitle/audio language selections and special options such as slideshows. Depending on the DVD-video disc, these menus may automatically start. The menu will only be displayed when the **MENU** or **TOP MENU** button is pressed.

Standby (Power) button allows the device to be powered on or set in standby mode.

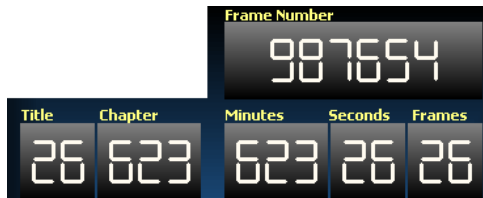
Configure Players: will allow you to add the device, as well as set up the media devices.

Advanced Options: allows you to access the advanced features of the device.

CONTROL FUNCTIONS

DISPLAY INFORMATION WINDOW

The display windows displays 16 characters, allowing the user to easily confirm operating status (Frame Number, Title, Chapter, Minutes, Seconds & Frames)



MEDIA TIME LINE BAR





The Media Time Line Bar allows you to quickly select the chapter without the need recycle through the




chapters.

BASIC OPERATIONS

The table below shows the basic operations involved when playing discs.

PLAY/PAUSE button 	Starts playback. Pause a disc that is playing, or restarts a paused disc playback. No image is displayed during pause mode.
STOP OPEN/CLOSE button 	Stops disc that is playing. When a disc is stopped, operates to open/close the disc tray
SCAN/SKIP REVERSE button 	Press to skip to previous track/chapter. Press and hold for fast reverse scanning.
SCAN/SKIP FORWARD button 	Press to skip to next track/ chapter. Press and hold for fast forward scanning.
STILL/STEP REVERSE button	Press for frame advance, press and hold for slow motion playback.



STILL/STEP FORWARD button 	Press for frame reverse, press and hold for reverse slow motion playback. (DVD only)

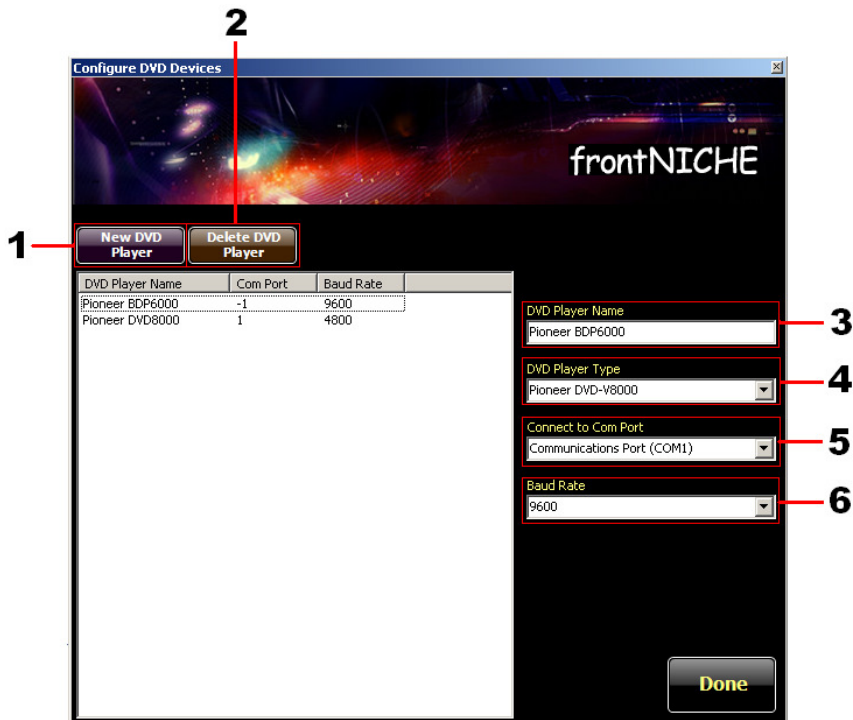
DVD-VIDEO DISC MENU

Many DVD-Video discs contain menus allowing the direct selection and viewing of specific parts of the disc. Menus may contain subtitle/audio language selections and/ or special options such as slideshows. Depending on the DVD-Video disc, these menus may be automatically displayed when playback has started. However when this is not the case, the menu will only be displayed when the **MENU** or **TOP MENU** button is pressed.

TOP MENU button	Press to display top menu of a DVD disc.
MENU button	Press to display the menu of a DVD. This button may function the same way as TOP MENU .
CURSOR or Arrow buttons	Use to move the cursor on the screen.
ENTER button	Use to confirm the item selected by the cursor.
RETURN button	Press to return to previous menu screens.
0 to 9, >10 (number) buttons	Use to select numbered menu options (Some discs only).
CLEAR button	Press to clear repeat playback, random playback, program playback and other settings (<i>only available for Blue Ray players</i>).
STANDBY/ON button	Use to select numbered menu options (<i>Some discs only</i>).

CONFIGURE DVD DEVICES

This panel is designed to allow you to add devices to the DVD controller easily and quickly with no difficulty.



With a simple point & click design process, this make the process of adding a device much easier.

ADD A DEVICE TO THE CONTROLLER;

1 - NEW DVD PLAYER

- Give the device a name in the *DVD player Name* box. This helps to identify the device in the list.
- Select the model of device, in the *DVD Player Type* using the drop down menu.
- Select the *COMs* port which the device is connected too, using the drop-down menu provided.
- Select the *Baud Rate* which the device requires, allowing Frontniche DVD Controller to communicate and control.
- Once you have completed these steps, press *New DVD Player* button. You will see the device you have just added appear in the device list. The device list will provide the following details; DVD Player Name, Com Port & Baud Rate

REMOVING A DEVICE FROM THE FRONTNICHE DVD CONTROLLER

2 - DELETE DVD PLAYER

To remove a device from the device list, press "**Delete DVD Player**" button.

3 - DVD PLAYER NAME

Allows you to name the device or DVD player in the device list. This will help identify the list of the devices.

4 - DVD PLAYER TYPE

Frontniche DVD controller will provide a list of Professional DVD and media devices that it can control. By selecting a device from the list provided, Frontniche DVD controller will provide the protocols and commands required to control the device.

5 - CONNECT TO COM PORT

Each device will be connected via USB or Serial port connection. You will be able to select a COM port number for the device to communicate with the controller software. This information will be displayed in the device list.

6 - BAUD RATE

Each device that uses a serial connection will require a Baud Rate setting. Select the appropriate Baud Rate setting for each device. If you do not know which setting is correct, please refer to the manufacturer's manual for the correct settings.

ADVANCED OPTIONS

The advanced option panel allows to you fully control the device.

KEY AND TRAY LOCK

LOCKS OFF

When the Tray and Key Lock is enabled, the Locks Off button overrides both Tray and Key Locks and disables both locks.

TRAY LOCK BUTTON

When Tray Lock function is enabled, the disc tray on the device cannot be opened.

KEY LOCK BUTTON

The KEY lock function determines whether the device or remote control unit buttons are in "enabled or disabled" mode.

- KEY Lock "ON"

Commands from the remote control and front panel buttons are disabled.

- KEY Lock "OFF"

Commands from remote control and front panel buttons are enabled.



KEY LOCK INDICATOR DISPLAY TABLE

The indicator displays for each KEY LOCK settings value are as follows:

TRAY	REMOTE CONTROL	FRONT KEY	KEY LOCK indicator display
Enable	Enable	Enable	Off
Disable	Enable	Enable	Off Flashing about 2 seconds when remote control unit's OPEN/CLOSE button is pressed, or if the main unit's STOP OPEN/CLOSE button is pressed during stop mode.
Enable	Disable	Enable	Lights Flashes about 2 second when remote control unit buttons are pressed.
Disable	Enable	Enable	Lights Flashes about 2 seconds when remote control unit buttons are pressed, or if the main unit STOP OPEN/Close button is pressed during stop mode.
Enable	Enable	Disable	Lights Flashes about 2 seconds when main unit buttons are pressed.
Disable	Enable	Disable	Lights Flashes about 2 seconds when unit's buttons are pressed, or if the remote control unit's OPEN/CLOSE buttons is pressed.
Enable	Disable	Disable	Lights Flashes about 2 seconds when buttons on remote control unit or main unit are pressed.
Disable	Disable	Disable	Lights Flashes about 2 seconds when buttons on the remote control unit or main unit are pressed.

DISPLAY CONTROL

DISPLAY CONTROL OFF

This function allows you to turn off the video source.

TIME/DATA RATES

During DVD playback, some DVD-Video discs indicate that the video is playing in 24fps progressive scan mode.

TITLE/ CHAPTER

Perform a title and chapter search.

PLAY MODE

Play Mode allows you to set how you want the device to play.

Options that can be accessed are Search Mode, A-B Repeat mode, Program Mode etc.

TIME / LANGUAGE/ SUBTITLES/ ANGLE BUTTON

- *Time*: Performs a time search
- *Language*: Change the audio language
- *Subtitles*: select a subtitle display. During playback,
- *Angle*: Change the camera angle during a multi-angle scene playback if available.

VARIABLE SPEED CONTROL

During playback, this bar allows you to perform fast to slow-motion playback.

STILL BUTTON

Press still button to display a still frame image.

Slow Reverse button & Slow Forward button

While the device is in Still/Step mode, pressing Slow Reverse or Slow Forward reverse or forward slow motion playback will change the playback speed.

SEARCH & CUE BUTTON

Allows you to perform a frame search and cue to a frame of the media.

SEARCH & CUE / STOP AT

With Search & Cue, you have the ability to select the time figure and frame at which to *Cue* or *Stop At*.

DISABLED VIDEO & DISABLE AUDIO

- Disable button allows to you to switch off the video source.
- Disable audio allows to you switch off the audio source.

SUBTITLE

Press the SUBTITLE button to display information regarding the currently selected subtitle mode. During playback, pressing the arrow buttons repeatedly will switch between available subtitle modes. Most produced films will support most countries in Europe, English/French/German/Italian/Spanish & Dutch.

ANGLE

Some DVD includes multiple camera angles in specific scenes. During the playback of multi-angle scenes. Press the ANGLE button during the playback of multi-angle scenes to switch angles if desired.

PARENTAL LEVEL

Some discs containing mature content such as violent scenes may feature a Parental Lock level (check the disc box for these discs). By setting player's Parental Lock level to a value lower than the level of the disc, playback of these discs can be prevented.

By setting the player's Parental Lock level to 6, the playback of level 7 disc will be prevented from playing. To play level 7 discs, the Parental Lock level must be present to level 7 or higher. These Parental Lock levels operate according to lock levels that differ from country to country.

ASPECT RATIO

Aspect ratio can be selected from the following.

4:3 (LETTER BOX)

Video produced in widescreen dimensions will be displayed in a Letter Box format. This setting is disabled when not supported by the disc being played.

4:3 (PAN & SCAN)

Video produced in widescreen dimensions will be displayed in a Pan & Scan format. This setting is disabled when not supported by the disc being played.

16:9 (WIDE)

Video produced in widescreen dimensions will be displayed in a 16:9 format.

16:9 (COMPRESSED)

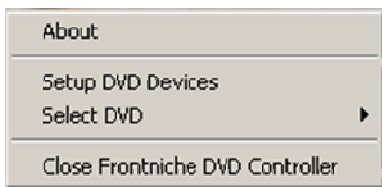
Select to display supporting progressive can with fixed aspect ratio. When playing video recorded in 4:3 aspect ratio on a display that does not support 4:3, select this format, the original 4:3 image will be displayed in a narrow (16:9) aspect ratio.

FRONTNICHE DVD CONTROLLER ICON

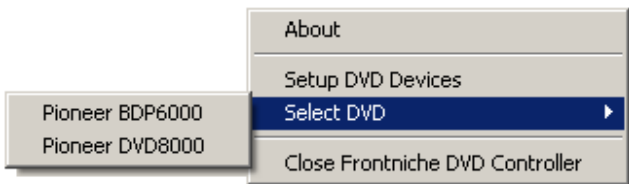
When the Frontniche DVD Controller is installed and running, you will be able to access the most regularly used options. The icon can be located in the task bar bottom right hand corner.



To access the options, right click on the icon, and a small list will appear. To add a new device to the controller highlight *Setup DVD Devices*. This will open the Configure DVD Devices panel, allowing you to add and configure the device setting for the operation via the Frontniche DVD controller.



Once the device(s) are added to the device list, you will be able to select the device in one easy process. By right clicking on *Select DVD* option, you be able to see the all devices in the list to choose from.



Free Manuals Download Website

<http://myh66.com>

<http://usermanuals.us>

<http://www.somanuals.com>

<http://www.4manuals.cc>

<http://www.manual-lib.com>

<http://www.404manual.com>

<http://www.luxmanual.com>

<http://aubethermostatmanual.com>

Golf course search by state

<http://golfingnear.com>

Email search by domain

<http://emailbydomain.com>

Auto manuals search

<http://auto.somanuals.com>

TV manuals search

<http://tv.somanuals.com>