

Thank you for buying this Pioneer product. This Quick Start Guide includes instructions for basic connections and operations to allow simple use of the receiver. For detailed descriptions of the receiver, see the "Operating Instructions" provided on the included CD-ROM (📀).

Register your product at

<http://www.pioneerelectronics.com> (US)

<http://www.pioneerelectronics.ca> (Canada)

● **Protect your new investment**

The details of your purchase will be on file for reference in the event of an insurance claim such as loss or theft.

● **Receive free tips, updates and service bulletins on your new product**

● **Improve product development**

Your input helps us continue to design products that meet your needs.

● **Receive a free Pioneer newsletter**

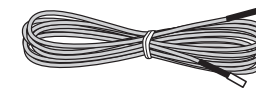
Registered customers can opt in to receive a monthly newsletter.



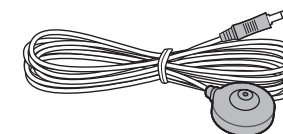
### What's in the box



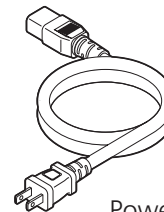
CD-ROM



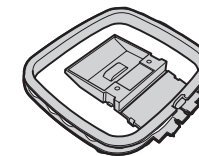
FM wire antenna



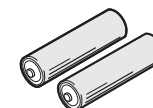
Setup microphone



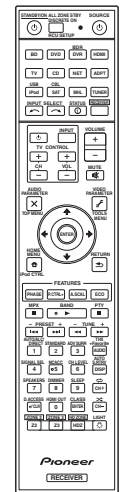
Power cord



AM loop antenna



AAA size IEC R03  
dry cell batteries x2



Remote Control

Safety Brochure

Warranty sheet

These quick start guide

# English

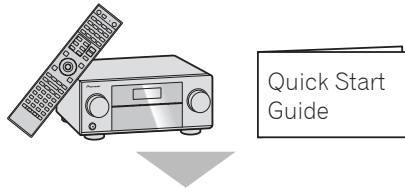
Enjoy easy multichannel playback with this unit in 3 steps: **STEP 1 Connecting up** → **STEP 2 Initial setup** → **STEP 3 Basic playback**. Convenient with easy connection and initial setup upon following the instructions displayed on-screen by installing AVNavigator.

- The Mac OS version of AVNavigator can be downloaded from <http://www.pioneerelectronics.com>.
- The iPad version of AVNavigator can be downloaded from the App Store.
- The provided CD-ROM includes the Windows version of AVNavigator.

Start connecting by choosing one method from among the following in accordance with your play environment.

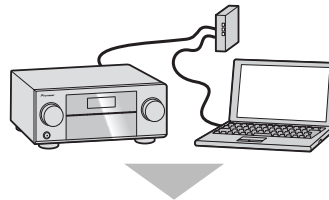
## Connection and initial setup

Connection and initial setup by referring to this Quick Start Guide



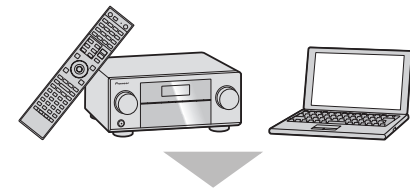
Move on to **STEP 1** in this guide.

Connection and initial setup following the instructions in the "Wiring Navi" in AVNavigator  
(Connection to the network is required for the initial setup.)



It is unnecessary to read this guide for explanations; **STEP 1** **STEP 2** will be explained in the "Wiring Navi" and **STEP 3** in the "Operation Guide".

Connect by following the instructions in the "Wiring Navi" in AVNavigator  
(For when the receiver is not to be connected to a network.)



**STEP 1** will be conducted in the "Wiring Navi", so move on to **STEP 2** **STEP 3** in this guide' after "Wiring Navi" is completed.

## Using AVNavigator

### AVNavigator for Mac

- 1 Download "AVNavigator 2013.pkg" from <http://www.pioneerelectronics.com>.
- 2 Launch "AVNavigator 2013.pkg" from the "Downloads" folder.
- 3 Follow the instructions on the screen to install.
- 4 Launch "AVNavigator 2013".
  - The file is located in the "Applications" folder just under the hard disk (Macintosh HD).
  - AVNavigator for Mac can be used with Mac OS X (10.7 or 10.8).

### AVNavigator for iPad

- 1 Download AVNavigator from the App Store.
- 2 Launch AVNavigator.

### AVNavigator for Windows

Launch the desktop from the start screen (for Windows 8 only).

- 1 Load the included CD-ROM into your computer's CD drive.
  - If the CD-ROM's top menu screen is not displayed, double-click "MAIN\_MENU.exe" on the CD-ROM.
  - The CD-ROM's top menu screen appears.
  - This CD-ROM can be used with Microsoft® Windows®

XP/Windows Vista®/Windows® 7/Windows® 8.

- The supported browser is Microsoft Internet Explorer® 8, 9 or 10.
- 2 Click "AVNavigator" on the "Installing Software" menu.
  - 3 Follow the instructions on the screen to install.
  - 4 Click [AVNavigator 2013.IV] on the desktop to launch AVNavigator.
    - AVNavigator is launched and Wiring Navi starts up.
    - Depending on the network or security settings on the computer on which AVNavigator is to be installed, AVNavigator's functions may not work properly.

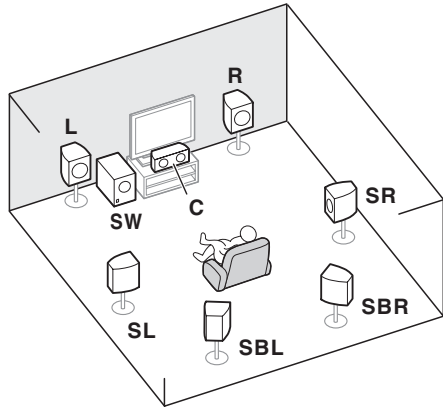
# STEP 1 Connecting up

## Connecting the speakers

The receiver will work with just two stereo speakers (the front speakers in the diagram) but using at least five speakers is recommended, and a complete setup is best for surround sound.

To achieve the comfortable surround sound, install your speakers as shown below.

7.1 channel surround system:



- L – Front Left
- C – Center
- R – Front Right
- SL – Surround Left
- SR – Surround Right
- SBL – Surround back Left
- SBR – Surround back Right
- SW – Subwoofer

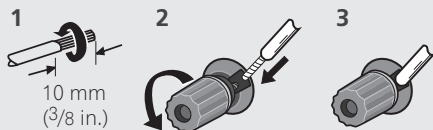
### Note

- There are also other speaker connection patterns (front height, front wide, etc.). For details, see page 20 of the operating instructions.

### Connecting the speaker cables

Make sure you connect the speaker on the right to the right (R) terminal and the speaker on the left to the left (L) terminal. Also make sure the positive and negative (+/-) terminals on the receiver match those on the speakers.

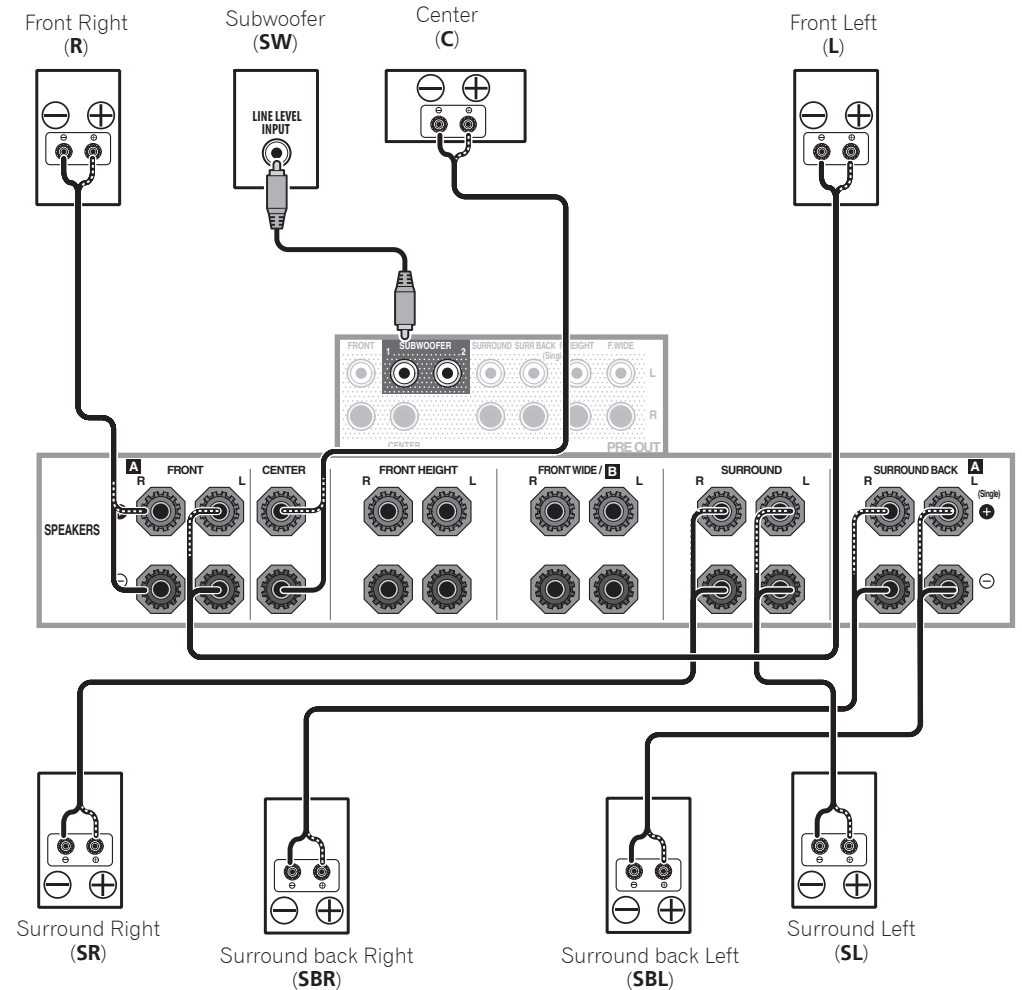
- 1 Twist exposed wire strands together.
- 2 Loosen terminal and insert exposed wire.
- 3 Tighten terminal.



### CAUTION

- Before making or changing connections, switch off the power and disconnect the power cord from the AC outlet.
- These speaker terminals carry **HAZARDOUS LIVE** voltage. To prevent the risk of electric shock when connecting or disconnecting the speaker cables, disconnect the power cord before touching any uninsulated parts.

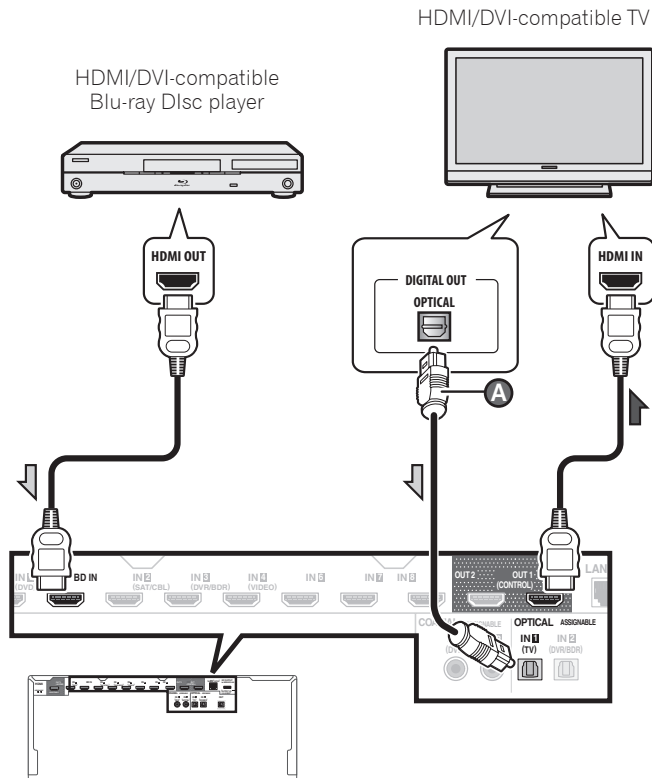
After installing the speakers, connect them as shown below.



### Note

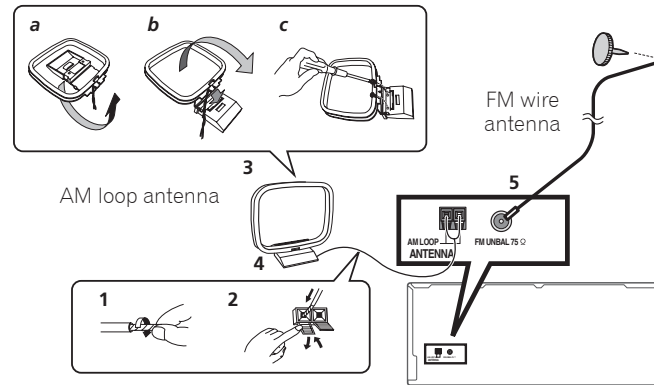
- When only connecting one surround back speaker, connect it to the **SURROUND BACK L (Single)** terminals.
- This unit supports speakers with a nominal impedance of 4 Ω to 16 Ω.

## Connecting a TV and playback components

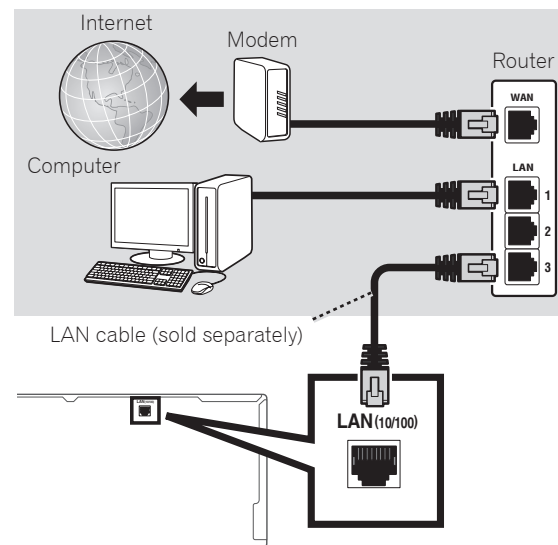


- If the TV does not support the HDMI Audio Return Channel function, optical digital cable (A) connection is required to listen to the TV sound over the receiver.
- If the TV supports the HDMI Audio Return Channel function, the sound of the TV is input to the receiver via the HDMI terminal, so there is no need to connect an optical digital cable (A). In this case, set **ARC** at **HDMI Setup** to **ON** → (HDMI Setup icon) "HDMI Setup"
- Please refer to the TV's operation manual for directions on connections and setup for the TV.

## Connecting antennas



## Connecting to the network through LAN interface



### Note

- Refer to the operating instructions in the included CD-ROM if you wish to connect a TV or playback component in a method other than an HDMI connection.
- Refer to the operating instructions in the included CD-ROM for other device connections.

### CAUTION

- Handle the power cord by the plug part. Do not pull out the plug by tugging the cord, and never touch the power cord when your hands are wet, as this could cause a short circuit or electric shock. Do not place the unit, a piece of furniture, or other object on the power cord or pinch the cord in any other way. Never make a knot in the cord or tie it with other cables. The power cords should be routed so that they are not likely to be stepped on. A damaged power cord can cause a fire or give you an electric shock. Check the power cord once in a while. If you find it damaged, ask your nearest Pioneer authorized independent service company for a replacement.


### VENTILATION CAUTION

When installing this unit, make sure to leave space around the unit for ventilation to improve heat radiation (at least 20 cm at top, 10 cm at rear, and 20 cm at each side).

### WARNING

Slots and openings in the cabinet are provided for ventilation to ensure reliable operation of the product, and to protect it from overheating. To prevent fire hazard, the openings should never be blocked or covered with items (such as newspapers, table-cloths, curtains) or by operating the equipment on thick carpet or a bed.

D3-4-2-1-7b\*\_A1\_En

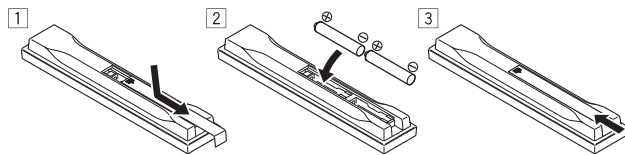


**CAUTION:**  
**HOT SURFACE. DO NOT TOUCH.**  
The top surface over the internal heatsink may become hot when operating this product continuously.

## STEP 2 Initial Setup

### Before you start

#### 1 Put the batteries in the remote control.



The batteries included with the unit are to check initial operations; they may not last over a long period. We recommend using alkaline batteries that have a longer life.

#### 2 Switch on the receiver and your TV.



#### 3 Switch the TV input so that it connects to the receiver.

#### 4 Turn the subwoofer on and turn up the volume.

#### ⚠ WARNING

- Do not use or store batteries in direct sunlight or other excessively hot place, such as inside a car or near a heater. This can cause batteries to leak, overheat, explode or catch fire. It can also reduce the life or performance of batteries.

#### ⚠ CAUTION

- When inserting the batteries, make sure not to damage the springs on the battery's (-) terminals. This can cause batteries to leak or overheat.
- When disposing of used batteries, please comply with governmental regulations or environmental public institution's rules that apply in your country/area.

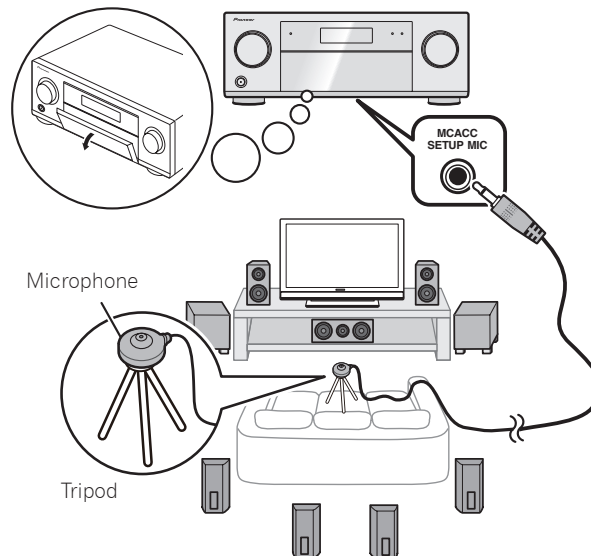
### Automatically setting up for surround sound (MCACC)

The Auto Multi-Channel Acoustic Calibration (MCACC) setup uses the supplied setup microphone to measure and analyze the test tone that is outputted by the speakers. This setup enables automatic high precision measuring and settings; utilizing it will create an optimum user listening environment.

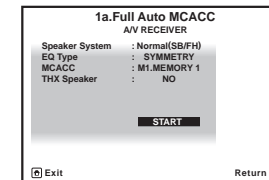
#### 📌 Important

- Measure in a quiet environment.
- If you have a tripod, use it to place the microphone so that it's about ear level at your normal listening position. Otherwise, place the microphone at ear level using a table or a chair.
- Accurate measurements may not be possible if there are obstacles between the speakers and the listening position (microphone).
- When measuring, step away from the listening position, and operate using the remote control from the external side of all the speakers.

#### 1 Connect the supplied setup microphone.



The **Full Auto MCACC** screen appears on your TV.

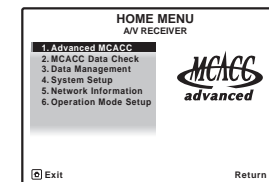


#### 2 Press **RECEIVER** on the remote control, then press the **ENTER** button.

- Automatic measuring will start.
- Measuring will take about 3 to 12 minutes.

#### 3 Follow the instructions on-screen.

- Automatic setting is complete when the Home Menu screen appears.

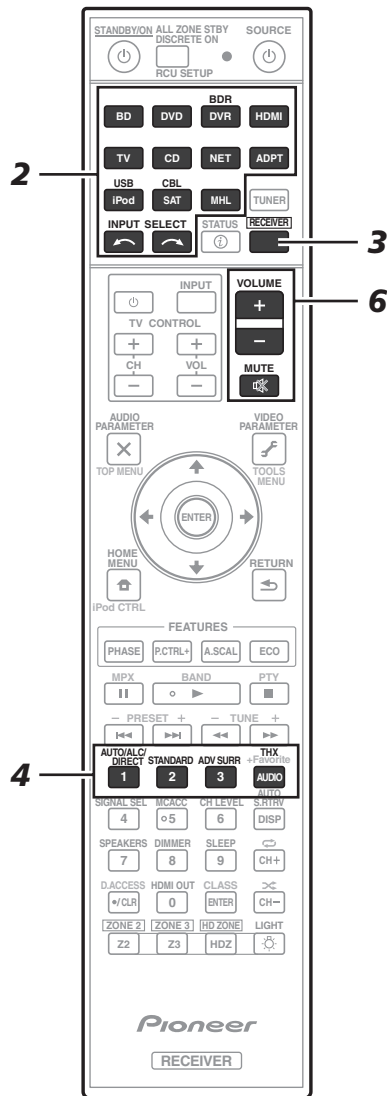


- If **Reverse Phase** is displayed, the speaker's wiring (+ and -) may be inverted. Check the speaker connections. Even if the connections are correct, **Reverse Phase** may be displayed, depending on the speakers and the surrounding environment. This does not affect measurements, however, so select **Go Next**.
- If **ERR** is displayed, check that speaker is properly connected. E.g.) Check whether the surround speaker has been mistakenly connected to the surround back terminal.

#### 4 Make sure the setup microphone is disconnected.

## STEP 3 Basic playback

### Multichannel playback



#### 1 Switch on the playback component.

E.g.) Turn the Blu-ray Disc player connected to the **HDMI BD IN** terminal on.

#### 2 Switch the input of the receiver.

E.g.) Press **BD** to select the **BD** input.

#### 3 Press **RECEIVER** to the receiver operation mode.

#### 4 Press **AUTO/ALC/DIRECT** to select 'AUTO SURROUND'.

For multi-channel playback with a 2-channel audio input (TV, music, etc.), press the **STANDARD**, **ADV SURR** or **THX** button to select your preferred listening mode.

#### 5 Start the playback component's playback.

E.g.) Start playback of the Blu-ray Disc player.

#### 6 Use **VOLUME +/-** to adjust the volume level.

Sound can be switched off by pressing **MUTE** button.

#### Note

- Switch to one of the underlined devices to use the remote control to operate that device. To operate the receiver, first press **RECEIVER**, then press the appropriate button to operate.
- The receiver's remote control can be used to operate not only the receiver but also a variety of other devices, including an iPod/USB device, a Blu-ray Disc player, a TV, etc.  
E.g.) Playing a Blu-ray Disc player



### Listening to the radio

#### 1 Press **TUNER** to select the tuner.

If necessary, press **BAND** to change the band (FM or AM).

#### 2 Press **TUNE +/-** to tune to a station.

- Press and hold **TUNE +/-** for about a second. The receiver will start searching for the next station.
- If you're listening to an FM station but the reception is weak, press **MPX** to select FM MONO and set the receiver to the mono reception mode.

### Saving station presets

If you often listen to a particular radio station, it's convenient to have the receiver store the frequency for easy recall whenever you want to listen to that station.

#### 1 Press **TOOLS** while receiving a signal from the station you want to store.

The preset number is blinking.

#### 2 Press **PRESET +/-** to select the station preset you want, then press **ENTER**.

The preset number stop blinking and the receiver stores the station.

### Listening to station presets

You will need to have some presets stored to do this.

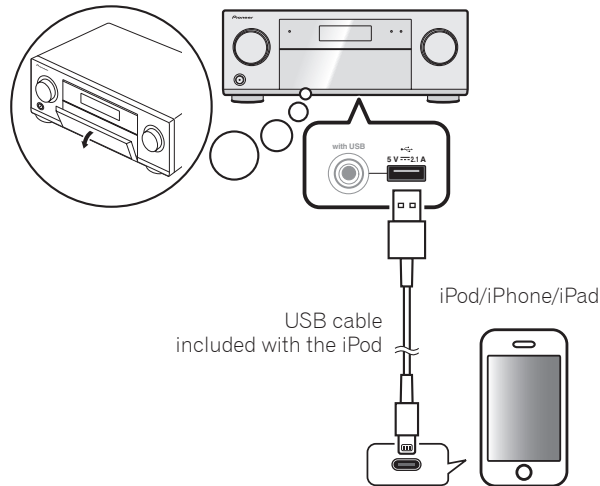
- Press **PRESET +/-** to select the station preset you want.

## Playing an iPod

- About one minute is required between turning the power on and completion of startup.

### 1 Connect your iPod.

An iPod/iPhone/iPad can be connected to the receiver.



### 2 Press iPod USB to select the iPod/USB input.

When the display shows the names of folders and files, you're ready to play music from the iPod.

### 3 Use ↑/↓ to select a category, then press ENTER to browse that category.

- To return to the previous level any time, press RETURN.

### 4 Use ↑/↓ to browse the selected category (e.g., albums).

- Use ←/→ to move to previous/next levels.

### 5 Continue browsing until you arrive at what you want to play, then press ► to start playback.

## Listening to Internet radio stations

- About one minute is required between turning the power on and completion of startup.

### Important

- When using a broadband Internet connection, a contract with an Internet service provider is required. For more details, contact your nearest Internet service provider.
- To listen to Internet radio stations, you must have high-speed broadband Internet access. With a 56 K or ISDN modem, you may not enjoy the full benefits of Internet radio.
- Access to content provided by third parties requires a high speed internet connection and may also require account registration and a paid subscription. Third party content services may be changed, suspended, interrupted, or discontinued at any time without notice, and Pioneer disclaims any liability in connection with such occurrences. Pioneer does not represent or warrant that content services will continue to be provided or available for a particular period of time, and any such warranty, express or implied, is disclaimed.

### 1 Press NET repeatedly to select the INTERNET RADIO input.

It may take several seconds for this receiver to access the network.

### 2 Use ↑/↓ to select the Internet radio station to play back, and then press ENTER.

## To enjoy the many functions of the unit to the fullest extent

Install the AVNavigator into your computer, and use the "Interactive Manual" and "Operation Guide".

Load the CD-ROM into your computer and download the PDF manual from the menu screen to read.

### Functions

- Playing a USB device
- Bluetooth ADAPTER for Wireless Enjoyment of Music
- Playback with NETWORK feature
- Setting the Audio options
- Setting the Video options
- Using the MULTI-ZONE controls

### FAQ

### Glossary

### Features index

### Note

- This unit supports AirPlay. For details, see page 64 of the operating instructions and the Apple website (<http://www.apple.com>).
- This unit's software can be updated (page 103 of the operating instructions). With Mac OS, it can be updated using Safari (page 106 of the operating instructions).

To register your product, find the nearest authorized service location, to purchase replacement parts, operating instructions, or accessories, please go to one of following URLs :

Pour enregistrer votre produit, trouver le service après-vente agréé le plus proche et pour acheter des pièces de rechange, des modes d'emploi ou des accessoires, reportez-vous aux URL suivantes :

**In the USA/Aux Etats-Unis**

<http://www.pioneerelectronics.com>

**In Canada/Aux Canada**

<http://www.pioneerelectronics.ca>

S018\_B1\_EnFr

**PIONEER CORPORATION**

1-1, Shin-ogura, Saiwai-ku, Kawasaki-shi, Kanagawa 212-0031, Japan

**PIONEER ELECTRONICS (USA) INC.**

P.O. BOX 1540, Long Beach, California 90801-1540, U.S.A. TEL: (800) 421-1404

**PIONEER ELECTRONICS OF CANADA, INC.**

340 Ferrier Street, Unit 2, Markham, Ontario L3R 2Z5, Canada TEL: 1-877-283-5901, 905-479-4411

**PIONEER EUROPE NV**

Haven 1087, Keetberglaan 1, B-9120 Melsele, Belgium TEL: 03/570.05.11

**PIONEER ELECTRONICS ASIACENTRE PTE. LTD.**

253 Alexandra Road, #04-01, Singapore 159936 TEL: 65-6472-7555

**PIONEER ELECTRONICS AUSTRALIA PTY. LTD.**

5 Arco Lane, Heatherton, Victoria, 3202, Australia, TEL: (03) 9586-6300

**PIONEER ELECTRONICS DE MEXICO S.A. DE C.V.**

Bldv.Manuel Avila Camacho 138 10 piso Col.Lomas de Chapultepec, Mexico, D.F. 11000 TEL: 55-9178-4270

K002\_B3\_En

Register Your Product on

<http://www.pioneerelectronics.com> (US)

<http://www.pioneerelectronics.ca> (Canada)

© 2013 PIONEER CORPORATION.

All rights reserved.

<ARH7170-A>

Printed in



## Free Manuals Download Website

<http://myh66.com>

<http://usermanuals.us>

<http://www.somanuals.com>

<http://www.4manuals.cc>

<http://www.manual-lib.com>

<http://www.404manual.com>

<http://www.luxmanual.com>

<http://aubethermostatmanual.com>

Golf course search by state

<http://golfingnear.com>

Email search by domain

<http://emailbydomain.com>

Auto manuals search

<http://auto.somanuals.com>

TV manuals search

<http://tv.somanuals.com>