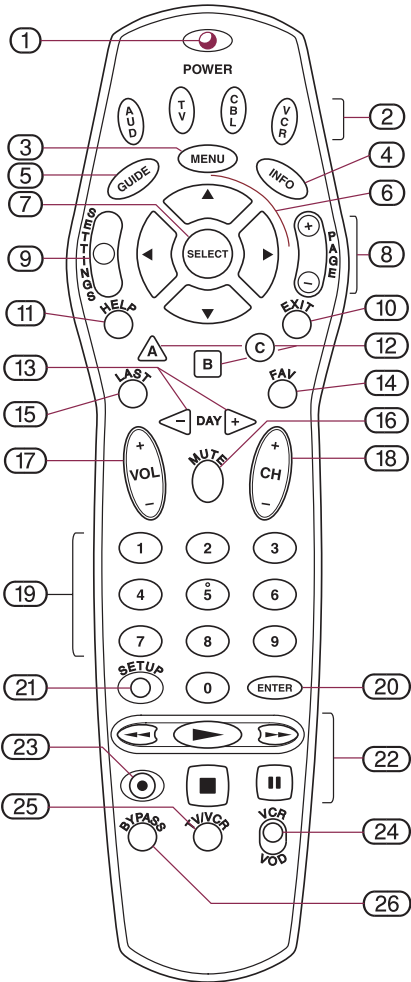


Operating Instructions

REMOTE CONTROL

BR-360



What it does

The BR-360 operates all Pioneer *Voyager* BD-V1000/BD-V3000 series Digital Home Terminals, as well as some home terminal models from other manufacturers. You need the BR-360 to experience all the viewing options *Voyager* offers, because you can't access all *Voyager* functions from the Home Terminal front panel keys or from other brand remotes.

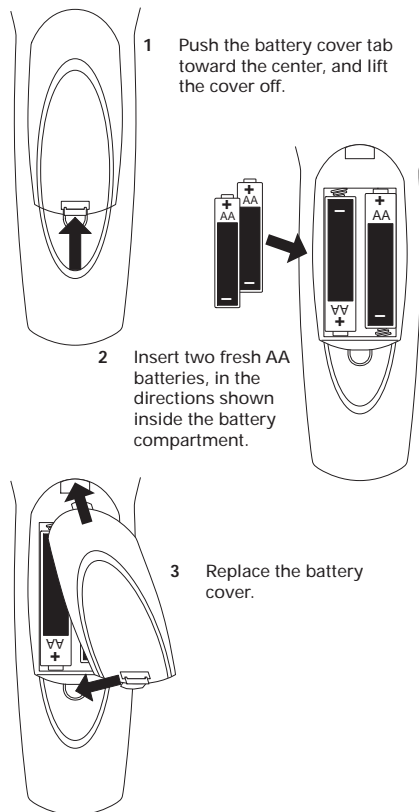
The BR-360 also supports basic remote control functions for nearly all TVs, VCRs, stereo receivers/amplifiers, and some DVD players. You don't have to remember to switch "modes" with the BR-360 — each key always transmits to one device.

This instruction sheet contains setup instructions and device codes. Keep this sheet in case you need to set up the BR-360 remote again in the future.

Batteries

Two AA batteries power the BR-360.

To install batteries:



BR-360 keypad

The BR-360 operates your *Voyager* Home Terminal, TV, VCR, and audio equipment (stereo receiver/amplifier). *Certain keys only operate certain devices.* Keys that work together are clustered to make them easier to locate.

Each key is described below. These are basic descriptions only. Refer to the manual(s) that came with your Home Terminal to learn how to use the keys.

The device(s) in parentheses are those the key will operate. For example, note that item 18 below (CH +/-) will change the channel on the *Voyager* terminal only, not on the TV or the VCR. Before you can use the BR-360 to operate your TV and other equipment, see **Programming your BR-360** below to learn how to set up the BR-360.

Note: Some keys designated "Voyager" may not operate with some versions of home terminal hardware or software.

Indicator

- ① **Indicator light**
Blinks when the remote transmits a command. Also helps you during setup.

Power control

- ② **AUD, TV, CBL, VCR: Device power keys** (Audio, TV, Voyager, VCR/DVD player)
Turn power of these devices on/off.

On-screen operations

- ③ **MENU: Main menu access key** (Voyager)
Displays the menu of *Voyager* features.
- ④ **INFO: Information key** (Voyager)
Displays information about the program currently playing or highlighted in the program guide.
- ⑤ **GUIDE: Interactive program guide key** (Voyager)
Displays the program guide listings.
- ⑥ **▲, ▶, ▼, ◀: Display navigation keys** (Voyager)
Highlight an item from the on-screen choices.
- ⑦ **SELECT: Display action key** (Voyager)
Activates the highlighted item.
- ⑧ **PAGE +/-: Page rocker key** (Voyager)
Accesses pages above or below the information currently displayed.
- ⑨ **SETTINGS: Voyager settings menu key** (Voyager)
Displays the menu of preferences for your *Voyager* home terminal.

- ⑩ **EXIT: Exit key** (Voyager)
Hides all on-screen graphics and returns you to regular TV viewing.
- ⑪ **HELP: Help access key** (Voyager)
Displays helpful information about *Voyager* operation.
- ⑫ **A, B, C: Function keys** (Voyager)
Make direct selections from on-screen menus.
- ⑬ **DAY +/-: Program guide day skip keys** (Voyager)
Skip forward or backward a whole day in the program guide.

Channel/volume control

- ⑭ **FAV: Favorite channel recall key** (Voyager)
Tunes channels previously stored in the *Voyager* terminal's favorite channel memory.
- ⑮ **LAST: Last channel recall key** (Voyager)
Accesses the previously tuned channel.
- ⑯ **MUTE: Mute key** (Audio, TV, or Voyager)
Silences the audio. Press to activate. Press this key again to restore sound to the previous level.
- ⑰ **VOL +/-: Volume rocker key** (Audio, TV, or Voyager)
Raises or lowers the sound level.
- ⑱ **CH +/-: Channel rocker key** (Voyager)
Selects the next higher or lower channel.
- ⑲ **0 - 9: Numeric keys** (Voyager)
Directly tune channels by number. Also make numeric entries in on-screen menus.
- ⑳ **ENTER: Enter key** (Voyager)
Immediately tunes the channel number you've just entered.

BR-360 programming

- ㉑ **SETUP: BR-360 setup key**
Starts programming your BR-360.

VCR/DVD/VOD operations

- ㉒ **◀, ▶, ⏮, ■, ⏭, ⏸: Transport keys** (VCR, DVD player, or Voyager)
Activate play (▶), rewind (◀), fast-forward (⏭), stop (■), and pause (⏸) functions of your VCR or DVD player. Take the same actions on Video-On-Demand programming through the *Voyager* terminal. Determined by position of VCR/VOD toggle switch (24).
- ㉓ **●: Record key** (VCR)
Starts recording on your VCR.

- ㉔ **VCR/VOD: VCR/VOD toggle switch**
Selects the device to which the BR-360 transport keys (22) transmit. Slide to "VCR" to send transport/pause commands to your VCR or DVD player. Slide to "VOD" to pause, scan forward/backward, stop, and resume play of a current Video-On-Demand program.
- ㉕ **TV/VCR: TV/VCR key** (VCR)
Toggles the VCR's TV/VCR switch.

RF Bypass control

- ㉖ **BYPASS: RF Bypass key** (Voyager)
Toggles the *Voyager*'s optional RF Bypass switch.

Programming your BR-360

Setup for Voyager Home Terminal

No setup is required. The BR-360 is ready to run the *Voyager* Home Terminal.

Setup for TV operation

Find your TV brand and its three-digit codes under **TV setup codes** on the back of this sheet. If your brand is not listed, go to **Searching the code library** instead.

- Turn on the TV.
- Press and hold **SETUP**. The indicator light comes on. Keep holding until the light goes off.
- Release **SETUP**. The indicator light blinks once.
- Press **TV**.
- Enter the three-digit code. Indicator light blinks twice to confirm acceptance.
- Point the BR-360 toward the TV.
- Press **TV**. *Did the TV turn off?*

Yes: *Setup complete.* Write down the three-digit setup code below for future reference.

No: Try setup again starting from step 2, using the next code listed for your brand. If you've tried all codes for your brand without success, use the method under **Searching the code library**.

My TV setup code is:

Setup for VCR or DVD player operation

You can choose to control either your VCR or your DVD player. For VCR setup, find the VCR brand and its three-digit codes under **VCR setup codes** on the back of this sheet. If your brand is not listed, go to **Searching the code library**.

- Turn your VCR on.

- Press and hold **SETUP**. The indicator light comes on. Keep holding until the light goes off.
- Release **SETUP**. The indicator light blinks once.
- Press **VCR**.
- Enter the three-digit code. Indicator light blinks twice to confirm acceptance.
- Point the BR-360 toward the VCR.
- Press **VCR**. *Did the VCR turn off?*

Yes: *Setup complete.* Write down the three-digit setup code below for future reference.

No: Try setup again starting from step 2, using the next code listed for your brand. If you've tried all codes for your brand without success, try the method under **Searching the code library**.

For DVD player setup, find your DVD player brand and its three-digit codes under **DVD player setup codes** on the back of this sheet. Then follow the above VCR instructions using your DVD player and code.

My VCR or DVD player setup code is:

Setup for stereo receiver/amplifier operation

Find the audio equipment brand and its three-digit codes under **Stereo receiver/amplifier setup codes** on the back of this sheet. If your brand is not listed, go to **Searching the code library**.

- Turn your receiver (or amplifier) on.
- Press and hold **SETUP**. The indicator light comes on. Keep holding until the light goes off.
- Release **SETUP**. The indicator light blinks once.
- Press **AUD**.
- Enter the three-digit code. Indicator light blinks twice to confirm acceptance.
- Point the BR-360 toward the receiver.
- Press **AUD**. *Did the receiver turn off?*

Yes: *Setup complete.* Write down the three-digit setup code below for future reference.

No: Try setup again starting from step 2, using the next code listed for your brand. If you've tried all codes for your brand without success, try the method under **Searching the code library**.

My receiver/amplifier setup code is:

Pioneer

© 2001, Pioneer New Media Technologies, Inc.
2265 East 220th Street
Long Beach, CA 90810 USA
telephone: (310) 952-2111
http://www.pioneerbroadband.com
©C 029 AACAs

Searching the code library

If none of the codes on this sheet seem to work, or your brand is not listed, you can search the BR-360 code library for one that works. The BR-360 automatically selects the proper code for your TV, VCR, or receiver/amplifier. Make sure the equipment is turned on before you program the BR-360.

To search the library of TV codes:

- Turn on the TV.
- Press and hold **SETUP**. The indicator light comes on. Keep holding until the light goes off.
- Release **SETUP**. The indicator light blinks once.
- Press **TV**.
- Point the remote control at your TV and press **SELECT**. The indicator light stays on. *Did the TV turn off?*

Yes: Immediately press **TV**. The light goes out and then blinks twice. Setup is complete. To make sure programming was done correctly, aim the remote at the TV and press **TV**. The TV should turn back on.
Note: Now, be sure to follow **Getting your code**, to find out the three-digit setup code. Write it down so you can use the direct setup method in the future.

No: Repeat step 5 until the TV turns off. You may need to do this over 100 times to go through the entire code library. Pause one second between each **SELECT** keypress.
Note: If you accidentally went past the right code, press ▾ to go backward through the library.

To search the library of VCR, DVD, or stereo receiver/amplifier codes:

Follow the steps above, but substitute “VCR” or “AUD” for “TV” in each step.

Getting your code

If you've used the **Searching the code library** method to program your BR-360, or if you've misplaced your setup code, you can find out the loaded TV, VCR/DVD and AUD codes.

To get the TV code:

- Press and hold **SETUP**. The indicator light comes on. Keep holding until the light goes off.
- Release **SETUP**. The indicator light blinks once.
- Press **TV**.
- Press **INFO**. The indicator light blinks out the code number in sequence. Count the number of blinks for each digit. The indicator light pauses between each digit.
Note: A long blink means the digit is 0 (zero).
- Write down the code for future reference under **Setup for TV operation**.

To get the VCR/DVD or stereo receiver/amplifier code:

Follow the steps above, but substitute “VCR” or “AUD” for “TV” in step 3. Write down the code for future reference, under **Setup for VCR or DVD player operation**, or **Setup for stereo receiver/amplifier operation**.

Setting up volume control

The BR-360 comes to you ready to control volume and mute functions through the Voyager Home Terminal. You can set up the BR-360 to do these through the TV or stereo receiver/amplifier instead.

To switch volume/mute control to the TV, the receiver/amplifier, or back to the Voyager Home Terminal:

- Press and hold **SETUP**. The indicator light comes on. Keep holding until the light goes off.
- Release **SETUP**. The indicator light blinks once.
- Press **VOL+** or **VOL-**. The light blinks.
- Press the key for the device on which you want to control volume:

AUD: receiver/amplifier

CBL: Voyager **TV:** TV set

The indicator light blinks twice. The BR-360 volume and mute keys now control volume on the new device.
- To make sure programming was done correctly, aim the BR-360 at the device and press **VOL +**, **VOL -**, or **MUTE**. The volume setting on the device should change.

Helpful hints

Setup

If the BR-360 does not operate the TV, VCR/DVD player, or stereo receiver properly:

- Try all the codes listed for the device.
- Try the search method.

Many devices use similar remote control codes. You may have selected a similar code for which only some commands work. Select another code from the list, or start the **Searching the code library** method over. Repeat the process until you find the correct code that operates all applicable functions for your equipment.
Note: Remember, each key transmits to only one device. See the **BR-360 keypad** section.

Operation

If the red indicator light does not blink when you press a key, or if the operation is intermittent:

Make sure the batteries are inserted correctly.

Replace both batteries with two new AA batteries.

Always replace both batteries at the same time.

TV setup codes

Akai — 030, 068, 071
Alba — 111
A-Mark — 118
Amstrad — 031
Anam — 009, 039, 118, 119, 135
Anam National — 142
AOC — 005, 006, 018, 019, 118, 139, 156
Archer — 118
Audiovox — 118
Bauer — 109
Baycraft — 034
Brockwood — 139
Broksonic — 060, 135
Candle — 006, 020, 021, 023, 034, 139
Candle/Citizen — 135, 156
Capehart — 018, 139
Circuit City — 139
Citizen — 006, 015, 020, 021, 022, 023, 024
Colortyme — 071, 139
Concerto — 021
Contec — 025, 026, 039, 089
Contec Cony — 135
Craig — 034, 039, 135, 138
Crown — 024, 034
Curtis Mathes — 006, 015, 024, 071, 147, 156
CXC — 039, 135
Daewoo — 005, 022, 024, 027, 028, 029, 030, 142, 156, 163
Daytron — 024, 139
Dixi — 030, 086, 118
Dumont — 139
Electrohome — 024, 071, 153, 157
Elta — 030
Emerson — 024, 025, 026, 031, 032, 033, 034, 035, 036, 037, 038, 039, 071, 120, 135, 136, 139, 140, 143, 164
Envision — 006, 156
Etron — 030
Fisher — 040, 088
Formenti — 109
Fortress — 071, 103
Fujitsu — 032, 138
Funai — 032, 039, 135, 138
Futuretech — 039, 135, 138
GE — 003, 008, 009, 014, 038, 041, 042, 128, 139, 142, 145, 158, 159, 160
Genexxa — 111
Goldstar — 005, 021, 024, 043, 044, 071, 086, 137, 156
Gradiente — 155
Granada — 139, 155
Grand — 139
Grundig — 045
Hallmark — 139
Harman/Kardon — 059
Hinari — 032
Hitachi — 021, 024, 046, 047, 048, 049, 050, 051, 052, 053, 083, 095, 124, 146, 162
Infinity — 064
JBL — 064
JC Penney — 003, 005, 006, 015, 024, 029, 041, 094, 145, 158
Jensen — 054, 071
JVC — 055, 056, 057, 058
Kawasho — 046, 059, 156
Kenwood — 006, 071, 156
Kloss — 020, 059, 108
Kloss Novabeam — 142
KTV — 024, 037, 038, 039, 135, 140, 156
Lloyds — 139
Lloytron — 024
Loewe — 086
Logik — 017
Luxman — 021
LXI — 003, 061, 064, 088, 093, 115, 123, 145
Magnasonic — 071
Magnavox — 006, 019, 023, 034, 062, 063, 064, 065, 066, 067, 071, 073, 108, 154, 156
Marantz — 006, 064, 071, 086, 156
Matsui — 030, 107
Megatron — 139
Memorex — 017, 030, 088, 139
MGA — 004, 005, 006, 069, 071, 139
Mitsubishi — 004, 005, 068, 069, 070, 095, 121, 139, 149, 151, 156
MontgomeryWard — 005, 006, 014, 017, 032, 034, 041, 062, 063, 065, 066, 105, 117, 156, 158, 159
MTC — 005, 006, 015, 021, 029, 139, 156
NAD — 000, 115, 139
National — 009, 141
National Quanties — 141
NEC — 005, 006, 007, 016, 021, 071, 125, 156
Nikkai — 110, 111, 116
Nordmende — 049
Normandic — 161
Novabeam — 059
Nyon — 145
Onwa — 039, 135
Optonica — 103, 105
Orion — 138
Osaki — 110
Panasonic — 008, 009, 010, 011, 012, 064, 072, 133, 141, 142, 144, 150, 158, 160
Philco — 005, 006, 023, 034, 062, 063, 066, 071, 108, 156
Philips — 064, 086
Pioneer — 000, 046, 049, 074, 152
Portland — 005, 024, 156
Proscan — 003
Proton — 013, 018, 024, 034, 083, 122, 139
Pulsar — 002
Quasar — 008, 009, 075, 142, 144
Radio Shack — 024, 039, 105, 110, 135, 142

RCA — 003, 005, 014, 046, 077, 078, 079, 080, 081, 082, 084, 085, 123, 131, 132, 135, 142, 145, 152, 158, 159, 160

Realistic — 088
Saba — 049

Saisho — 030, 031, 107
Sampo — 006, 018, 142

Samsung — 005, 006, 015, 021, 024, 030, 086, 110, 139, 148, 156, 165

Samwon — 118

Sanyo — 040, 087, 088, 089, 090, 107

SBR — 086

Schneider — 086

Scott — 024, 032, 035, 039, 091, 098, 135, 140, 145

Sears — 003, 021, 032, 040, 061, 087, 088, 092, 093, 094, 096, 097, 099, 100, 101, 102, 115, 139, 147

Seimitsu — 139

Sharp — 024, 083, 089, 103, 104, 105, 106, 126, 127

Siemens — 089

Signature — 017

Silver — 071

Solavox — 110

Sony — 001, 076, 107, 117, 120, 134

Soundesign — 023, 034, 039, 135, 139

Spectricon — 019, 118

Squareview — 138

SSS — 005, 039, 071, 135, 156

Supra — 021

Supre-Macy — 020

Sylvania — 006, 023, 034, 062, 063, 064, 066, 071, 073, 098, 108, 109, 156

Symphonic — 130, 136, 138

Tandy — 103, 111

Tatung — 009, 142

Technics — 008

Techwood — 021, 071

Teknika — 004, 005, 015, 017, 020, 021, 022, 023, 024, 032, 034, 039, 112, 113, 135, 156

Teleavia — 049

Telefunken — 049

Teletech — 030

Tera — 013

Thomas — 139

Thomson — 049, 114, 153

TMK — 021, 071, 139

Toshiba — 015, 088, 094, 115, 116, 129

Tosonic — 026

Totevision — 024

Toyomenko — 139

Universal — 041

Vector Research — 006

Victor — 055

Video Concepts — 068, 135

Vidtech — 005, 139, 156

Viking — 020

Yamaha — 005, 006, 156

York — 139

Zenith — 002, 017, 137

Zonda — 118

VCR setup codes

Aiwa — 088, 119, 120, 121

Akai — 017, 018, 019, 020, 021, 022, 023, 024, 072

Alba — 050

Amstrad — 088

ASA — 069

Audio Dynamics — 094, 100

Broksonic — 063

Bush — 089

Candle — 080, 092, 093

Canon — 046, 057, 058

Capehart — 047, 050

Citizen — 091, 092, 093

Craig — 091, 108

Crosley — 057

Curtis Mathes — 058, 092, 105

Daewoo — 038, 049, 050, 051, 093

Daytron — 050

DBX — 094, 100

Dumont — 053

Dynatech — 088

Electrohome — 109

Emerson — 009, 010, 011, 012, 013, 014, 015, 016, 063, 072, 088, 090, 109, 116

Finlandia — 053

Finlux — 053, 069, 088

Fisher — 052, 053, 084, 088, 108, 110

GE — 054, 055, 056, 058, 076, 091, 105

Go Video — 061, 062, 117

Goldstar — 034, 059, 092, 112, 113

Goodmans — 085, 089

Granada — 053, 081

Grundig — 069

Harman Kardon — 034, 073

Hinari — 089

Hitachi — 040, 041, 042, 043, 044, 045, 057, 088, 095, 096, 097

Instant Replay — 057

ITT — 022

JC Penney — 034, 058, 080, 091, 094, 100, 101

Jensen — 064

JVC — 065, 066, 067, 068, 092, 094, 100, 101

Kenwood — 066, 081, 092, 094, 100, 101

Lloyds — 088

Logik — 089

Luxor — 022

Magnavox — 031, 057, 058, 060, 069, 111

Marantz — 034, 058, 069, 085, 092, 094, 100, 101, 103

MEI — 058

Memorex — 037, 053, 058, 070, 081, 085, 088, 108

MGA — 071, 072, 109

Mitsubishi — 066, 071, 072, 073, 074, 075, 109

Montgomery Ward — 031, 058, 080, 085, 088, 089, 090, 091, 107, 108, 109

MTC — 048, 080, 088

Multitech — 088, 089, 091

NAD — 000

NEC — 034, 035, 036, 066, 092, 094, 099, 100, 101, 102, 103, 104

Olympic — 057

Optonica — 085

Orion — 010, 011

Panasonic — 025, 026, 027, 028, 030, 057, 058, 098, 114, 123

Pentax — 041, 092

Perdio — 088

Philco — 057, 058, 111

Philips — 057, 058, 069, 085

Pioneer — 000, 001, 002, 003, 057, 066, 100

Portland — 050, 093

Proscan — 057, 105

Pulsar — 037

Quartz — 081

Quasar — 057, 058, 077, 078

Radio Shack — 107, 108, 109, 110

RCA — 029, 030, 031, 032, 033, 041, 091, 105, 106, 115, 124, 125

Free Manuals Download Website

<http://myh66.com>

<http://usermanuals.us>

<http://www.somanuals.com>

<http://www.4manuals.cc>

<http://www.manual-lib.com>

<http://www.404manual.com>

<http://www.luxmanual.com>

<http://aubethermostatmanual.com>

Golf course search by state

<http://golfingnear.com>

Email search by domain

<http://emailbydomain.com>

Auto manuals search

<http://auto.somanuals.com>

TV manuals search

<http://tv.somanuals.com>