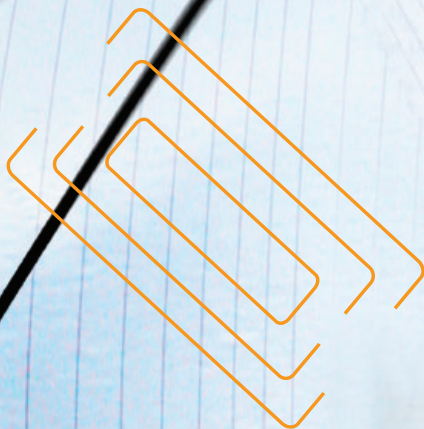


 **Pitney Bowes**

***DANKA***

# Workgroup Colour Document Systems MX2600N/MX3100N

Enhanced productivity for the workgroup



*Colour  
Impact*



MX2600N  
MX3100N



## Advanced features that deliver impressive performance, enhanced workflow efficiency and eye-catching image quality

Sharp's MX2600N and MX3100N Series colour document systems have been meticulously engineered to help businesses maximize their document workflow efficiency while providing outstanding image quality and performance. These next generation of models offer many advanced features such as a large, **high resolution touch-screen colour display with graphical menu navigation** and a **full-size retractable keyboard** to make data entry easy. Plus, with a powerful 800 MHz true multi-tasking controller, the MX2600N and MX3100N can save time and money producing professional colour documents in-house with breathtaking image quality that is also economical. With an advanced device management suite, it's easy to control colour usage and costs. The MX2600N and MX3100N have been built on the latest Sharp OSA™ development platform, making integration with network applications easier than ever. And, with an industry leading security suite, you can rest assured that your intellectual property is well protected.



"Best Digital Imaging  
Product Line" Award 2008



"Best Development Platform-Sharp  
OSA™ Technology" Award 2008



"Most Secure MFP Range"  
Award - 5th Consecutive Year



MX2600N  
MX3100N



## Sharp's award winning document systems offer innovative features that stimulate productivity

Flexibility

Productivity

Integration

Innovation

User-Friendly

- ❖ Powerful 800 MHz **true multi-tasking** full-colour document system
- ❖ Large, **high resolution touch-screen** colour display with graphical navigation
- ❖ Advanced second generation micro-fine toner technology offers sharp, **high-quality images** page after page
- ❖ **1200 x 1200 dpi** printing provides clear, crisp images even on jobs with fine detail
- ❖ Network interface supports **gigabit ethernet**
- ❖ Industry leading **ImageSEND™** function scans documents to USB devices, network folders, e-mail and more
- ❖ Robust 30 GB **document filing system** with **thumbnail view** and **image preview** features
- ❖ Network ready PCL(r)6/PCL5c and standard Postscript(r)3™ **printing system** with **direct print** and optional Windows(r)XPS
- ❖ Supports the latest OSA development platform, enabling businesses to streamline document workflow and **enhance productivity** faster and easier than ever before\*
- ❖ ImageSEND function scans documents at up-to **50 images per minute** in both black and colour
- ❖ **Flexible paper handling** system feeds up-to 110 lb index through paper trays and up-to 140 lb index through bypass tray
- ❖ On-board paper storage capacity for **up-to 5,600 sheets** with options
- ❖ **Super G3 fax** option with intelligent inbound routing
- ❖ Supports latest **award-winning** multi-level document and network **security suite**
- ❖ Supports new **IEEE-P2600 security standard** for MFP devices
- ❖ Advanced **web-based device management** offers both administrator level and user level login control
- ❖ **Remote front panel feature** allows users and administrators to view and control machine operations from a PC workstation\*
- ❖ **Environmentally friendly** design offers low power consumption and long life parts

\* Some features require optional equipment.

METICULOUSLY  
ENGINEERED

MX2600N  
MX3100N



ADVANCED  
FEATURES

## Performance features maximize your business

With today's fast-moving business environment, you need every advantage you can get—experience the enhanced MX Colour Document Systems

### Built-in Retractable Keyboard for Added Convenience

For workgroups that perform a significant amount of data entry, the MX2600N and MX3100N colour workgroup document systems include a standard retractable keyboard. Designed to simplify e-mail address and subject line entries, as well as repetitive scanning tasks and user authentication, the built-in keyboard offers users a familiar ergonomic interface.



Standard retractable keyboard makes data entry quick and easy

### The Flexibility and Performance You Need

With a larger 8.5" (diagonally measured) **high-resolution touch-screen colour display** and a powerful 800 MHz **multi-tasking controller**, the MX2600N and MX3100N colour workgroup document systems can help elevate your office productivity to the next level. The intuitive menu navigation system with razor sharp graphics makes operating the MX simple and easy. With a true multi-tasking controller, complex colour print jobs can be processed quickly, even while documents are being scanned. But that's just the beginning—with a **standard 100-sheet reversing document feeder**, automatic duplexing, electronic sorting and integrated offset stacking, you'll complete even large jobs in a snap.



Large 8.5" (diagonally measured), high-resolution touch-screen display

### High Quality Output You Can Rely On

The new MX2600N and MX3100N colour workgroup document systems combine Sharp's second-generation micro-fine toner technology with **1200 x 1200 dpi** print resolution to produce documents with crisp, clear images and dazzling high quality colours. The **Advanced Image Stabilization** system helps ensure uniform density and colour balance for beautiful output page after page.

### Reliability Your Business Can Depend On

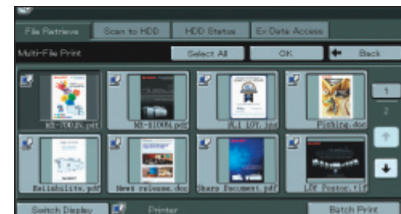
The MX colour workgroup document systems deliver professional performance and optimal productivity to satisfy your daily production needs. Copy/print speeds **up-to 26 ppm and 31 ppm** respectively (in both colour or B&W) help you to meet project deadlines with time to spare. The flexible paper handling system can feed up-to 110 lb index stock through the paper trays and up-to 140 lb index through the bypass tray. With available on-line paper capacity of up-to 5,600 sheets, the MX2600N/3100N is ready when you are.



On-line paper capacity stores up-to 5,600 sheets with options

### Innovative Document Filing

The easy-to-use **Document Filing System** provides up-to 30 GB of hard drive space to store frequently used files like forms and templates. Plus, with the **thumbnail preview** mode, stored jobs can be located and retrieved quickly. An advanced backup system and PIN-access security helps ensure that your files are safe.



The easy-to-use document filing system with thumbnail preview

### Get Professional Results with Advanced Finishing

Get Professional Results with Advanced Finishing The MX2600N/3100N offers a choice of two high-performance finishers that can always give your documents a professional look and feel. You can save time and money by minimizing outsourced colour jobs such as proposals, presentations or newsletters. Choose from a compact inner finisher or floor-standing saddle-stitch finisher. Both models offer three-position stapling and an available 3-hole punch.



MX3100N shown with optional inner finisher

OR



MX3100N shown with optional saddle-stitch finisher

MX2600N  
MX3100N

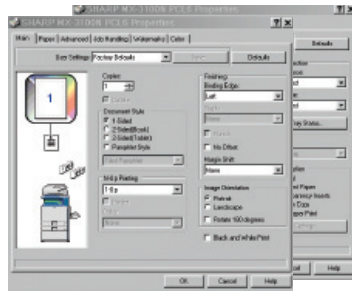
# Enhanced workflow features increase productivity

Out-front, easy-to-use features can help maximize document workflow efficiency in any business environment

## Exceptional Print Quality with Professional Finishing

With the MX2600N and MX3100N, your business can produce brilliant, high-quality colour documents, as well as razor-sharp B&W documents. Plus, with **1200 x 1200 dpi** resolution, even documents with fine detail will look great! **Powerful finishing features** include 3-position stapling for up-to 50 sheets, saddle-stitching up to 15 ledger-size sheets and hole-punching.\* Now, you can **produce professional quality documents** from your desktop

that look so good, everyone will think you had them sent out to a printer.



Easy-to-use print drivers make accessing all of the MX Colour features simple and easy

## A True Multi-Tasking Document System

The MX2600N and MX3100N feature a **high-performance, 800 MHz multi-tasking controller** that delivers copy, fax and print jobs continuously for optimum efficiency. Other controllers only perform one operation at a time. But the MX Series continually processes incoming jobs even while existing jobs are output. The result? A workflow that virtually never slows down—even at crunch time.

## Direct USB Printing Adds Convenience and Portability

With Direct USB printing, users can print colour or B&W files in a variety of popular formats directly from USB memory devices such as a ThumbDrive™ or ClipDrive™.\* Need to print PDF brochures in a hurry for a big meeting? It's easy with the MX Colour Series, just plug in your portable USB memory device, select the file, and your job prints immediately.



USB 2.0 port is located on the front panel of the machine for easy access

DOCUMENT  
WORKFLOW &  
DISTRIBUTION

# Flexible document distribution

## Integrated Network Scanning

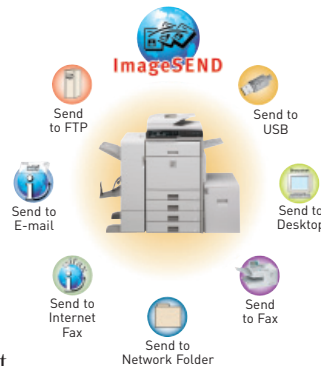
With new powerful **ImageSend** technology, you get one-touch distribution features that centralize document workflow, reduce mail costs and save time.

With up to **seven destinations**—

E-mail, Desktop, FTP, Network Folders (SMB), USB, Fax and Internet Fax—getting your document

where it needs to go is as easy as pushing a button.

High-volume workgroups will appreciate the **Send to Group** mode that allows you to mix group broadcast to E-mail, Fax, and Internet Fax for increased efficiency.\*



## Convenient E-mail Distribution

With Lightweight Directory Access Protocol (LDAP), there's no need to manually enter a recipient's complete e-mail address. Simply enter the first few characters and the MX automatically searches and displays a list of matching names. **Unique File Naming** allows users to enter specific file names with custom subject fields, so it's easier than ever to recall files when you need them. And, with **Sharpdesk**® personal document management software, users can easily organize their scanned documents and integrate them into everyday workflow.

## Integrated PC Fax and Internet Fax

Add powerful facsimile capability to your MX Colour Series with the optional Super G3 fax module, which offers advanced features such as automatic stapled/copied receptions and Inbound Fax Routing to e-mail. Sharp's innovative PC fax driver enables users to send fax documents right from their desktop. For Internet fax operation, add the optional B&W Internet Fax expansion kit.



## Versatile Application Integration

To help streamline document workflow and **enhance productivity**, the MX2600N and MX3100N support the Sharp OSA development platform. This third generation technology allows users to **interact with network applications** faster than ever before—and right from the machine LCD panel! With the ability to personalize applications and processes specific to your business, OSA technology can help reduce redundancy and streamline workflow. OSA technology uses industry-standard network protocols, such as XML and SOAP, allowing the MX to communicate with many different applications. The OSA development platform is also scalable, so as your workflow needs change, Sharp's application integration can change as well.

\* Some features require optional equipment.



# Advanced device management maximizes productivity

MX2600N  
MX3100N

Engineered with you in mind, the MX2600N and MX3100N combines easy-to-use integrated software with robust device management capabilities

## The Sharp Administration Utility Suite

Sharp's Administration Utility Suite takes management of your MX2600N and MX3100N to the next level. This easy-to-use software allows you to take control of the versatile system features and simplifies installation and management.

- With **Printer Status Monitor**, network users can view printer conditions, check paper levels, toner, and more, all through an easy-to use interface.
- With an advanced **Printer Administration Utility**, administrators can easily manage the setup, configuration, device settings, cloning and more! New advanced features such as **Remote Front Panel** allow administrators and support personnel to view and control the LCD panel of the machine remotely from any PC on the network!\* Plus, with event-driven, real-time service alerts, administrators and supervisors can achieve higher productivity. Now, it is easier than ever to view service logs, click counts, history reports and more.
- Experience the convenience of an **Embedded Web Page** right from your desktop! This advanced web-based management tool allows users to create and manage their own network scanning destinations, profiles and web-links. Administrators can access device settings, colour control, account information and security settings.

## Take Charge of Colour Usage and Cost

With the **device management system**, administrators and supervisors can define user groups on the MX to manage and restrict features, such as colour copying, scanning or printing. Easily set up a custom user group to manage page counts (copy, print, scan or fax operations) for both colour and B&W. The MX2600N and MX3100N can store **profiles for up-to 1000 users**. Now, it is easier than ever to manage the costs of colour imaging!



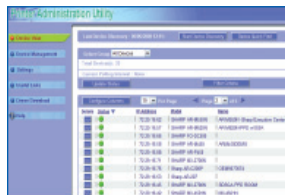
Separate print buttons for B&W and Colour allow users to selectively manage use of colour



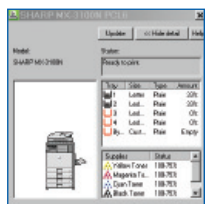
ADVANCED  
DEVICE  
MANAGEMENT



Embedded Web Page



Printer Administration Utility



Printer Status Monitor



Remote Front Panel

\* Some features require optional equipment.

# Heightened security helps protect your business

Innovative document and device protection helps ensure confidentiality of information as well as authorized access and control of all functions.

MX2600N  
MX3100N

To help protect your data, the MX2600N and MX3100N Series offers several layers of security, making this series the optimum choice to protect employee privacy and intellectual property. As the leader in office equipment security, the MX2600N and MX3100N make it easy for any business or government entity to safely deploy digital copying, printing, scanning and faxing.



## Authority Groups and Access Control

Advanced account management enables administrators to set authority groups for access to features of the MX2600N/3100N Series. Administrators can control which department, for instance, has full access to colour copying, printing, scanning and/or fax. Walk up users enter a code, Local Name and Password, or LDAP User Authentication to access their features assigned to their group.



## Data Erase and Encryption

To help protect your data, the MX2600N/3100N Series offers an optional data security kit that encrypts document data using **AES** (Advanced encryption standard) **encryption**. Additionally, the data security kit erases the temporary memory on the hard drive by overwriting the encrypted data up-to seven times, offering an unprecedented level of assurance.

These scalable security offerings aim to protect your intellectual property, preserve confidential information and enable your business to meet regulatory requirements, such as the Personal Information Protection and Electronic Documents Act (PIPEDA).



## Network Scanning Access

To help protect your network from unauthorized e-mail communications, the MX2600N/3100N Series supports **User Authentication**, requiring users to login before performing any network scanning operations.



## Control Device Access Over the Network

To help restrict access to the device over the network, the MX2600N/3100N Series offers IPsec, SMB and extended support for **SSL Encryption** (Secure Sockets Layer), **IP/MAC address filtering**, IEEE 802.1x authentication, protocol enable/disable and port management for maximum security.



## Documents Remain Confidential

To help protect your printed documents from unauthorized viewing, the MX2600N/3100N Series offers encrypted PDF files for printing and scanning as well as **Confidential Printing** that requires users to enter a PIN code in order to print a queued document. Additionally, **Secure Fax Release** ensures received fax documents are held in memory until an authorized user enters a PIN code.



DATA SECURITY  
STRONG  
ENVIRONMENTAL  
LEADERSHIP

## Environmentally friendly

### Designed with a Strong Commitment to Protecting the Environment

The MX2600N and MX3100N document systems utilize the second generation micro-fine toner technology, which offers a lower consumption rate than conventional toners. This also results in less packaging material and longer replacement intervals. Power consumption on the MX2600N and MX3100N is among the lowest in the industry and supports two different energy saving modes to reduce or shut off power after a set interval. All Sharp document systems belong to the EnergyStar® program, and RoHS program.

### An Economical, Low Maintenance Colour Document System That Makes Sense

The MX2600N and MX3100N are designed to accommodate both large and small office environments. With a compact wingless design, the footprint of each base model is less than 25" x 28". Our new long-life consumable parts and supplies minimize service intervals and down time.

### Sharp's Environmental Leadership

Reinforcing our commitment to the environment, in 2007, Sharp received the Excellence in Partnership Green Contractor Award and the Evergreen Award from the U.S. Government's General Services Administration and the Coalition for Government Procurement.



The Green Contractor Award recognizes contractors that have made the best overall commitment to the environment by offering environmentally friendly products and services or adhering to environmentally sound manufacturing procedures.

The Evergreen Award identifies environmentally-friendly businesses and their efforts in recycling and waste reduction practices.



# MX2600N/MX3100N specifications

## Main Specifications

<b>MX2600N/3100N</b>	Includes multi-tasking controller, 80 GB HDD with document filing system, PCL5c/PCL6/PS3 network printing, network scanning, 100-sheet RSPF, auto-duplex, two 500-sheet paper drawers and 100-sheet bypass.
<b>Type</b>	Console, colour multi-function digital document system
<b>Functions</b>	Copy, print, network print, network scan, document filing and fax <sup>1</sup>
<b>Copy System</b>	Dry electrostatic transfer/Dual component developer/Magnetic brush development/OPC drums/Heat Roller fusing/Xenon lamp exposure
<b>Originals</b>	Sheets and bound documents
<b>Max Original Size</b>	11" x 17"
<b>Copy Size</b>	Min. 5 1/2" x 8 1/2", Max. 11" x 17" + 12" x 18"
<b>Copy Speed</b>	MX2600N: 26 ppm B&W/Colour (8 1/2" x 11") MX3100N: 31 ppm B&W/Colour (8 1/2" x 11")
<b>Multiple Copy</b>	Max. 999 copies
<b>First Copy Time</b>	Platen glass: 6 seconds (B&W); 8.9 seconds (colour) RSPF: 10.7 seconds (B&W); 13.5 seconds (colour) (Based on A4 original using tray 1 Auto colour selection & Auto colour Polygon)
<b>Warm Up Time</b>	60 Seconds or less
<b>Magnification</b>	25% to 400% in 1% increments (with document feeder 25%-200%)
<b>Original Feed</b>	100-sheet RSPF with original size detection
<b>Scan Speed</b>	Copy mode: Up-to 50 OPM (B&W) @ 600 x 400 dpi; Up-to 36 OPM (Colour) @ 600 x 600 dpi. Network Scan: Up-to 50 OPM (B&W or Colour) 200 x 200 dpi. All times based on single-side letter originals.
<b>Original Sizes</b>	5 1/2" x 8 1/2", 8 1/2" x 11", 8 1/2" x 11" R, 8 1/2" x 14", 11" x 17" (13-32 lb. bond)
<b>Paper Feed System</b>	Standard: (2) 500-sheet paper drawers (letter/legal/ledger/statement size) and 100-sheet bypass tray (letter/legal/ledger/statement/envelope size). <sup>2</sup>
<b>Paper Types</b>	Paper drawers: 16 lb. bond - 110 lb. index, large capacity tray: 16 - 28 lb. bond. Other paper types include plain, pre-printed, recycled, pre-punched, letterhead and colour paper. Bypass Tray: 16-28 lb. bond (plain paper), 13-16 lb. bond (thin paper), 110-140 lb. index (heavy paper), 20-24 lb. bond (Monarch/Com-10 envelope), tab paper (letter size only). Other types include label paper, gloss paper, pre-printed, recycled, pre-punched, letterhead, colour paper and OHP film.
<b>Duplexing</b>	Standard automatic duplex copying and printing
<b>CPU</b>	Power QUICCIII-MPC8533E (800MHz)
<b>Interface</b>	RJ45 Ethernet (10/100/1000Base-T), USB 2.0 (host port), USB 2.0 (device port)
<b>Memory</b>	Standard 1 GB (copier); 512 MB (printer/network scanning) memory
<b>Hard Disk Drive</b>	80 GB; 30GB for document filing system and electronic sorting
<b>Copy Resolution</b>	Scan: B&W/colour: 600 DPI; Copy Output: B&W/colour: 600 DPI
<b>Colour Modes</b>	Auto Colour Control (ACS), Full Colour Mode, Monochrome (B/W)
<b>Exposure Control</b>	Modes: Automatic (Colour: Magical view, B/W: Character AE) Text, Text/Photo, Text/Printed-Photo, Printed-Photo, Photo, Map, Photo-Colour document. Settings: Auto exposure control or 9 step manual exposure.
<b>Half-tone</b>	256 gradations/2 levels (monochrome)
<b>Copy Features</b>	Scan-Once Print-Many, electronic sorting, offset-stacking, Auto Colour Sensing (ACS), Auto Paper Sensing (APS), Auto Magnification Sensing (AMS), auto tray switching, rotation copy, reserve copy, tandem copy, book copy, margin shift, tab-paper insertion, edge erase, center erase, dual page copy, cover pages, insert pages, OHP insertion, job build, card shot, multi-page enlargement, reverse image, black-white reversal, centering, proof copy, 2-in-1/4-in-1, pamphlet, photo repeat, document filing, account management, job programs, date/character/page stamp (colour).
<b>Account Control</b>	Up to 1000 users. Supports user-number authentication (on device), login name/password (on device) or login name/password (on device via LDAP server) for Copy, Print, Scan, Fax and document management.
<b>Output Tray Capacity</b>	Main output tray (top) 500 sheets (face down); optional eject tray right 1 side) 100 sheets (face down)
<b>Firmware Management</b>	Flash ROM with local (USB), network update capability and firmware update 1 to N with PAU (Printer Administration Utility)
<b>Configuration Method</b>	Web-based management system with user/administrator level login security, cloning (1 to N) with PAU and remote front panel access
<b>Power Consumption</b>	AC 100-127 VAC, 60 Hz, 12 Amps Maximum: 1440 W or less

<b>Weight</b>	Approx. 255 lbs. (base model)
<b>Dimensions</b>	23 1/4" (w) x 27 1/2" (d), x 37 1/2" (h)
<b>Network Printing System (standard)</b>	
<b>PDL</b>	PCL <sup>®</sup> 6/PCL5c compatible, standard Postscript 3, optional XPS
<b>Resolution</b>	1200 dpi, 600 dpi
<b>Print Speed</b>	26/31 pages per minute (8 1/2" x 11")
<b>Print Drivers</b>	Windows <sup>®</sup> 98, Windows Me, Windows NT <sup>®</sup> 4 (with SP5 or later), Windows 2000, Windows Server <sup>®</sup> 2003, Windows XP, Windows XP x64, Windows Server x64, Windows Vista <sup>™</sup> , Windows Vista x64, MAC OS <sup>®</sup> 9.2.2, OSX (including 10.2.8, 10.3.9, 10.4.11, 10.5-10.5.1), all MAC PPD.
<b>Features</b>	Continuous printing, duplex printing, pamphlet printing, N-up printing, image rotation, different cover page/last page, transparency inserts, tab printing, carbon copy print mode, fit-to-page, poster print, margin shift, mirror image, watermarks, overlay, confidential print, confidential batch print, print hold, proof print, bypass printing, job priority printing, print job control, tandem printing and direct printing (Note: some features not available on certain print drivers).
<b>Direct Printing</b>	File Types: TIFF, JPEG, PCL, PRN, TXT, PDF, Encrypted PDF, Postscript and XPS <sup>1</sup> Methods: FTP, Web page, E-mail and USB memory
<b>Resident Fonts</b>	80 outline fonts
<b>Interface</b>	RJ-45 Ethernet 10/100/1000 Base-T
<b>Operating Systems</b>	Windows 98/ME, NT 4.0, XP, 2003/2008 Server, Vista, Novell <sup>®</sup> Netware <sup>®</sup> 3x, 4x, 5x, MAC OS 9, OSX (including 10.5.1), Sun <sup>®</sup> OS 4.1x, Solaris <sup>®</sup> 2x, Unix <sup>®</sup> , Linux <sup>®</sup> and Citrix <sup>®</sup> (Metaframe, Presentation Server 4, 4.5) and Windows Terminal Services.
<b>Network Protocols</b>	TCP/IP (IPv4, IPv6, IPSEC) SSL (HTTP, IPP, FTP), SNMPv3, 802.1x for Windows and Unix. LPD and LPR for UNIX. IPX/SPX <sup>®</sup> for Novell environments. EtherTalk <sup>®</sup> and NetBEUI. AppleTalk <sup>®</sup> for Macintosh <sup>®</sup> environments.
<b>Printing Protocols</b>	LPR, IPP, IPPS, PAP, Raw TCP (port 9100), FTP and Novell PServer/Printer
<b>Network Security</b>	IP/Mac address filtering, protocol filtering, port management, user authentication and document administration.
<b>Security Standards</b>	IEEE-P2600, DoD (NSTISSP) #11, DoD Directive 8500.2, DoD (DISA)
<b>Network Scanning System (standard)</b>	
<b>Max Original Size</b>	11" x 17"
<b>Optical Resolution</b>	600 DPI
<b>Output Modes</b>	600 dpi, 400 dpi, 300 dpi, 200 dpi, 100 dpi
<b>Scan Modes</b>	Colour, monochrome, greyscale
<b>Image Formats</b>	Monochrome: TIFF, PDF, Encrypted PDF, XPS Colour: Greyscale, Colour TIFF, JPG, PDF, Encrypted PDF, XPS Internet Fax: TIFF-FX, FIFF-F, TIFF-S <sup>1</sup>
<b>Image Compression</b>	Monochrome Scanning: Uncompressed, G3 (MH), G4 (MR/MMR) Colour/Greyscale: JPEG (high, middle, low) Internet Fax mode: MH/MMR (option)
<b>Scan Destinations</b>	E-mail, Desktop, FTP, Folder (SMB), USB, Internet fax (option), Super G3 fax (option)
<b>One-touch Destinations</b>	Up to 999 (combined scan destinations)
<b>Group Destinations</b>	Up to 500
<b>Programs</b>	48 (combined)
<b>Max. Jobs in Memory</b>	Up to 94
<b>Network Protocols</b>	TCP/IP and SSL (includes HTTP, SMTP, LDAP, FTP, POP3, SMB, ESMTMP and 802.1x).
<b>Network Security</b>	E-mail server user authentication for LDAP and Active Directory
<b>Software</b>	Sharpdesk desktop document management software (1 user license)
<b>B&amp;W Super G3 Fax Kit (option)</b>	
<b>Transmission Mode</b>	Super G3, G3
<b>Modem Speed</b>	33.6 KBPS <sup>3</sup>
<b>Compression Methods</b>	JBIG, MMR, MR, MH
<b>Scanning Method</b>	Sheet fed simplex or duplex or book
<b>Max. Transmit Resolution</b>	400 DPI
<b>Transmit Speed</b>	Approximately 2 Seconds with Super G3/JBIG <sup>4</sup>
<b>Auto Dialing</b>	Up-to 999 (combined scan destinations)
<b>Group Dial/Destinations</b>	Up-to 500
<b>Inbound Fax Routing</b>	Forwards received fax data to E-mail
<b>Long length Originals</b>	Up-to 31.5" (for transmission)

<b>Programs</b>	48 (combined)
<b>Memory</b>	8 (exclusive)
<b>Half-tone</b>	256 levels
<b>Features</b>	Quick on-line transmission, direct transmission, F-Code transmission/reception, rotate transmission, anti-junk fax reception, automatically staple received faxes, secure fax release, out of paper memory reception, auto redial, 2-in-1 reception, duplex reception transaction reports, activity reports and PC fax.
<b>Inner Finisher (option)</b>	
<b>Type</b>	Built-in finisher (hole-punch unit option)
<b>Output Capacity</b>	500 sheets (letter/statement) or 250 sheets (ledger/legal size)
<b>Output Delivery</b>	Face down
<b>Stapling Media</b>	Plain paper, (letter, legal, or ledger size)
<b>Stapling Positions</b>	1 front, 1 rear, or both
<b>Stapling</b>	Up-to 50 sheets (letter size) or 30 sheets (legal, ledger or mixed)
<b>Stapled Sets</b>	30 bundles or 500 sheets (letter or statement size) or 30 bundles or 250 sheets (legal or ledger size)
<b>Hole Punching</b>	Optional hole punch unit (2 holes/3 holes)
<b>Weight</b>	Approx: 28.7 lbs.
<b>Dimensions</b>	25.2" (w) x 28.94" (d) x 8.1" (h) (includes extended tray)
<b>Saddle-Stitch Finisher (option)</b>	
<b>Type</b>	Console finisher with dual exit trays (mounts on left side of host machine)
<b>Output Trays</b>	Upper tray: Offset stack tray Lower tray: Book tray for saddle stitch
<b>Output Capacity</b>	1000 sheets (letter/statement size) or 500 sheets (legal, ledger or letter-R size)
<b>Stapling</b>	Up to 50 sheets (letter/statement) or 25 sheets (legal, ledger or mixed)
<b>Output Delivery</b>	Face down
<b>Stapling Media</b>	Plain paper, letter/legal/ledger size or mixed
<b>Stapling Positions</b>	1 front, 1 rear, or both
<b>Saddle-Stitch Function</b>	Center stitch/center folding (2 staples) letter/ledger paper sizes
<b>Saddle-Stitch Max. Sets</b>	Up to 10 sets (11-15 sheets per set)/15 sets (6-10 sheets per set)/20 sets (1-5 sheets per set)
<b>Power Consumption</b>	70 W or less
<b>Hole Punching</b>	Optional hole punch unit (2 holes/3 holes)
<b>Weight</b>	Approx: 88.18 lbs.
<b>Dimensions</b>	25.83" (w) x 24.84" (d) x 38.9" (h) (with tray extended)

<b>Large Capacity Tray (option)</b>	
<b>Type</b>	Large capacity paper feed desk
<b>Paper Size</b>	Letter size, 16-21 lbs. Bond
<b>Capacity</b>	3500 sheets
<b>Paper Types</b>	Plain paper, pre-printed, recycled, letterhead, pre-punched and coloured paper
<b>Power Consumption</b>	26.4 W, 40.8W when tray is rising
<b>Weight</b>	Approx: 63.9 lbs.
<b>Dimensions</b>	14 9/16" (w) x 21 21/32" (d) x 20 15/32" (h)

<b>Optional Equipment</b>	
Stand/2 x 500 Sheet Paper Drawer	
Rolling Cabinet Base	
Large Capacity Tray	
Inner Finisher	
Saddle-Stitch Finisher (with Paper Pass Unit)	
Punch Unit (for Saddle-Stitch Finisher/or Inner Finisher)	
Exit Tray Unit	
XPS Expansion Kit	
Internet Fax Kit	
Fax Expansion Kit	
Bar Code Font Kit	
Application Integration Module	
Application Communication Module	
External Accounting Module	
Data Security Kit (Commercial Version)	

1 Some features require optional equipment.

2 Paper capacity is based on letter size paper.

3 Actual transmission time will vary based on line conditions.

4 Based on Sharp Standard Test Chart with approximately 700 characters, letter size in standard resolution.



Pitney Bowes  
5500 Explorer Drive  
Mississauga, ON L4W 5C7

For more information call:  
1-800-672-6937  
www.pitneybowes.ca

© 2008 Pitney Bowes Ltd. All rights reserved.  
AD950-862

## Helping you optimize your mailstream.

At Pitney Bowes we have a term for the total sum of mail and documents, both traditional and digital, as well as packages that flow across your business and to your customers. We call it the mailstream, and we're in business to help you move your mailstream more efficiently. The people, solutions and software of Pitney Bowes are dedicated to the seamless end-to-end flow of documents you handle every day. No one is better equipped to help you move the critical information your business relies on.

Download from [www.Somanuals.com](http://www.Somanuals.com). All Manuals Search And Download.

## Our commitment to service.

Pitney Bowes is committed to providing our customers with the finest products and solutions backed by the highest quality service and customer care. We have a coast-to-coast network of trained Pitney Bowes service specialists plus a series of advanced customer service solutions to ensure our customers always receive the highest levels of service and support. Ask your Pitney Bowes Sales representative for more information about our President's Guarantee.



## Free Manuals Download Website

<http://myh66.com>

<http://usermanuals.us>

<http://www.somanuals.com>

<http://www.4manuals.cc>

<http://www.manual-lib.com>

<http://www.404manual.com>

<http://www.luxmanual.com>

<http://aubethermostatmanual.com>

Golf course search by state

<http://golfingnear.com>

Email search by domain

<http://emailbydomain.com>

Auto manuals search

<http://auto.somanuals.com>

TV manuals search

<http://tv.somanuals.com>