



# **Class 1 / Class 2 Bluetooth V2.0 USB Adapter**

**BT-410U/420U**

User's Guide

# Copyright

Copyright (C) 2005 PLANET Technology Corp. All rights reserved.

The products and programs described in this User's Manual are licensed products of PLANET Technology, This User's Manual contains proprietary information protected by copyright, and this User's Manual and all accompanying hardware, software, and documentation are copyrighted.

No part of this User's Manual may be copied, photocopied, reproduced, translated, or reduced to any electronic medium or machine-readable form by any means by electronic or mechanical. Including photocopying, recording, or information storage and retrieval systems, for any purpose other than the purchaser's personal use, and without the prior express written permission of PLANET Technology.

# Disclaimer

PLANET Technology does not warrant that the hardware will work properly in all environments and applications, and makes no warranty and representation, either implied or expressed, with respect to the quality, performance, merchantability, or fitness for a particular purpose.

PLANET has made every effort to ensure that this User's Manual is accurate; PLANET disclaims liability for any inaccuracies or omissions that may have occurred.

Information in this User's Manual is subject to change without notice and does not represent a commitment on the part of PLANET. PLANET assumes no responsibility for any inaccuracies that may be contained in this User's Manual. PLANET makes no commitment to update or keep current the information in this User's Manual, and reserves the right to make improvements to this User's Manual and/or to the products described in this User's Manual, at any time without notice.

If you find information in this manual that is incorrect, misleading, or incomplete, we would appreciate your comments and suggestions.

# CE mark Warning

The is a class B device, In a domestic environment, this product may cause radio interference, in which case the user may be required to take adequate measures.

# Trademarks

The PLANET logo is a trademark of PLANET Technology. This documentation may refer to numerous hardware and software products by their trade names. In most, if not all cases, these designations are claimed as trademarks or registered trademarks by their respective companies.

# WEEE regulation



To avoid the potential effects on the environment and human health as a result of the presence of hazardous substances in electrical and electronic equipment, end users of electrical and electronic equipment should understand the meaning of the crossed-out wheeled bin symbol. Do not dispose of WEEE as unsorted municipal waste and have to collect such WEEE separately.

## Revision

User's Manual for PLANET Class1/Class2 Bluetooth V2.0 USB Adapter:

Model: BT-410U, BT-420U

Rev: 1.0 (October, 2005)

Part No. EM-BT410U

# TABLE OF CONTENTS

---

<b>CHAPTER 1 INTRODUCTION</b> .....	1
1.1 Features.....	1
1.2 Package Contents.....	2
<b>CHAPTER 2 INSTALLATION</b> .....	3
2.1 Software Installation.....	3
2.2 Software Un-installation.....	6
2.3 Hardware Installation.....	6
2.4 Initial Bluetooth Configuration.....	8
<b>CHAPTER 3 BLUETOOTH SOFTWARE</b> .....	12
3.1 About Bluetooth Software.....	12
3.2 Bluetooth Tray.....	12
3.3 Access My Bluetooth Places.....	13
3.4 Icon Used For Bluetooth Devices And Services.....	13
<b>CHAPTER 4 BASIC OPERATION</b> .....	16
4.1 Start or Stop Bluetooth.....	16
4.2 Create A Connection From The Bluetooth Icon In The System Tray.....	16
4.3 Create A Connection Using The Bluetooth Setup Wizard.....	16
4.4 Create A Connection From Entire Bluetooth Neighborhood.....	16
<b>CHAPTER 5 FIND BLUETOOTH DEVICES</b> .....	18
5.1 Periodic Search For Devices.....	18
5.2 Find A Service.....	18
5.3 Bluetooth Connection Status.....	19
5.4 Send To Bluetooth.....	20
<b>CHAPTER 6 CONFIGURE BLUETOOTH</b> .....	21
6.1 Access The Bluetooth Configuration Panel.....	21
6.2 Bluetooth Services VS. Bluetooth Applications.....	21
6.3 Bluetooth Exchange Folder.....	21
6.4 General Configuration Settings.....	21
6.5 Bluetooth Applications.....	22
6.6 Bluetooth Services.....	32
6.7 Hardware Settings.....	40
6.8 Accessibility Settings.....	41
6.9 Discovery Settings.....	42
<b>CHAPTER 7 SECURITY</b> .....	44
7.1 Authentication.....	44
7.2 Authorization.....	44
7.3 Bluetooth Device Identity.....	44
7.4 Encryption.....	44
7.5 Link Key.....	44
7.6 Pairing Devices.....	45
7.7 Passkey.....	45
7.8 Secure Connection.....	45
7.8 Security Request Dialog Box.....	45

<b>APPENDIX A</b>	<b>TROUBLE SHOOTING .....</b>	<b>46</b>
<b>APPENDIX B</b>	<b>SPECIFICATION .....</b>	<b>49</b>

# Chapter 1

## Introduction



The BT-410U/420U is designed to connect USB port of a desktop or laptop PC, and allows the computer to build a short-range wireless connection to other Bluetooth devices like cellular phones, PDAs, and computers. Since the transmission medium of BT-410U/420U is air, PLANET also enhances both connection protection and data security mechanism to the product which helps people share and access trigger information. Compliant with Bluetooth specification Version 2.0 + EDR, BT-410U/420U can provide transfer rate up to 3Mbps, which is higher than Bluetooth v1.2 device.

The BT-410U/420U provides services of virtual serial port, dial-up networking, fax, file transfer, information exchange, information synchronization, and network access. With powerful bundled software, it's not difficult to implement configuration and management even there are so many functions. Most popular operating system support, including Windows 98SE, ME, 2000, XP and Server 2003, makes the application of BT-410U/420U more flexible.

Link your notebook with your handheld, mobile phone, printer, audio gateway and other Bluetooth devices within your personal area network (PAN) via a secure short-range wireless radio link. Get rid of all those hassle cables and automatically share documents, browse the Internet and synchronize calendars, address books and more.

### 1.1 Features

- Compatible with Bluetooth Core Specification Version 2.0 + EDR (Enhanced Data Rate)
- Bluetooth Manager Utility eases the difficulties of configuration and management
- Data rate up to 3Mbps
- Lower power consumption through reduced duty cycle
- Simplification of multi-link scenarios due to more available bandwidth
- Backwards compatible to Bluetooth V1.1/V1.2 specifications
- Further improved BER (Bit Error Rate) performance
- Connection protection and data security enhanced mechanism
- Up to 8 devices Point-to-MultiPoint topology expands your PAN coverage
- Various services provided: Virtual Serial Port, Dial-up Networking, Fax, File Transfer, Information Exchange, Information Synchronization, and Network Access
- Multilingual support in Bluetooth utility
- Most popular OS support: Windows 98SE/Me/2000/XP and Server 2003
- BT-410U has support Bluetooth Class 1, it can provide bigger cover area for user to connect their Bluetooth device longer

## 1.2 Package Contents

The following items should be included:

- 1 \* Bluetooth V2.0 USB Adapter
- 1 \* CD-ROM (includes Driver, Utility, Manual)
- 1 \* Quick Installation Guide

If any of the above items are damaged or missing, please contact your dealer immediately.

# Chapter 2

## Installation

# 2

### 2.1 Software Installation

**Note:** The Bluetooth Software should be installed well prior to the hardware installation. If the hardware install to PC before software installed, Windows will install this Bluetooth device with its built-in driver. That will make the Bluetooth device work incorrect.

1. Insert the CD-ROM into the CD-ROM drive to initiate the autorun program. Once completed, a menu screen will appear.
2. To install the Bluetooth software, click on the "**Bluetooth Software**" hyperlink to activate the installation procedure for the application program.

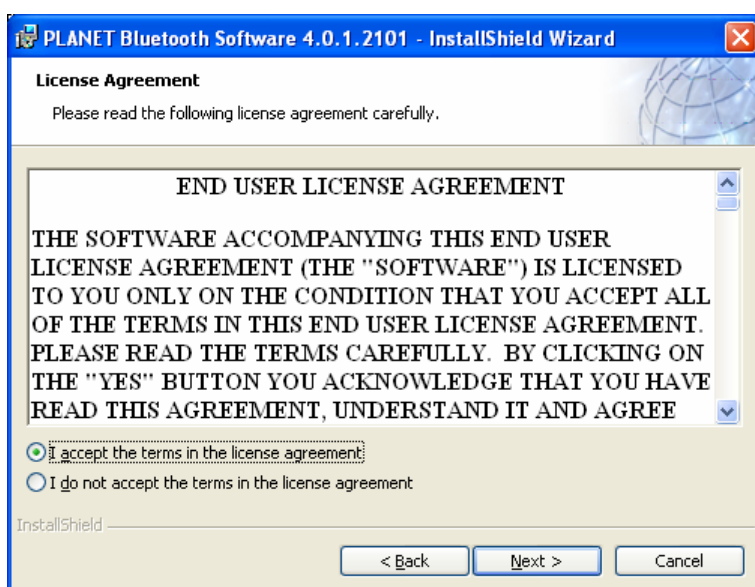
If the autorun program is not executed, you can start the installation as follows.

- Click on **Start Menu/ Run**.
  - Enter "D:\Utility\setup.exe" in the appeared box, where "D" is the letter of your CD-ROM drive.
  - Click on "**OK**" button.
3. On the *Welcome* screen, click the **Next** button.

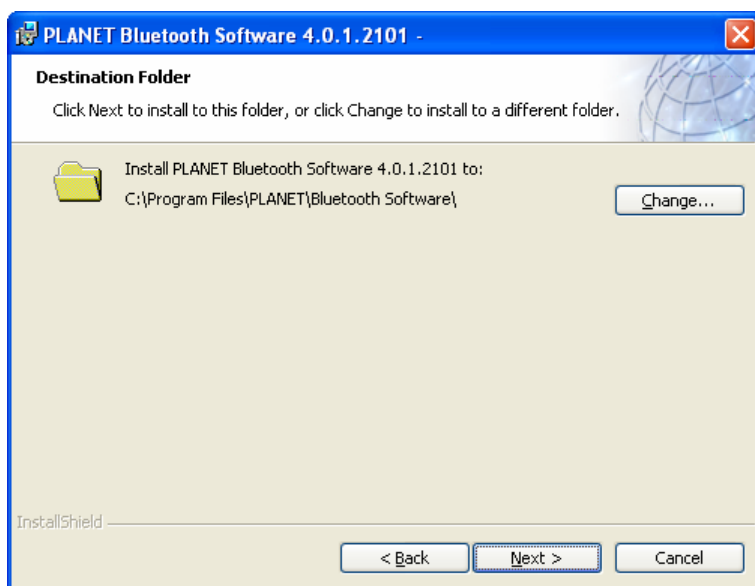


4. When the *License Agreement* screen is displayed, read the License Agreement, then select "**I accept the terms in the license agreement**" and click the **Next** button.

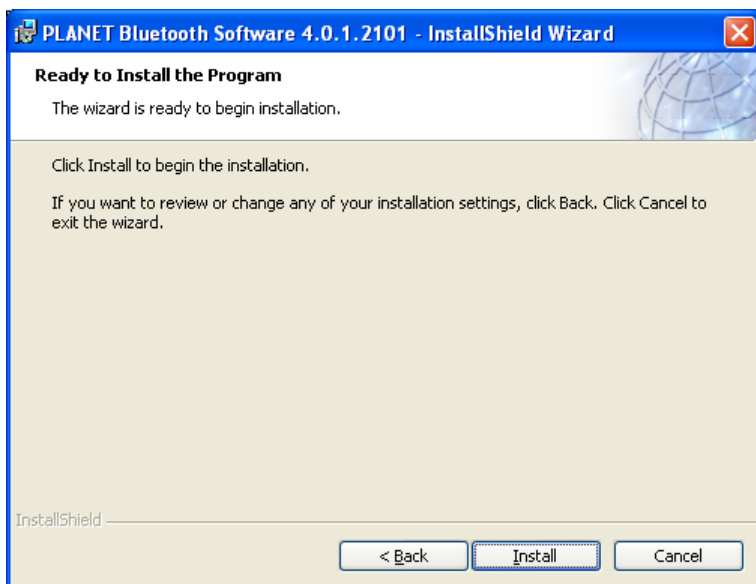




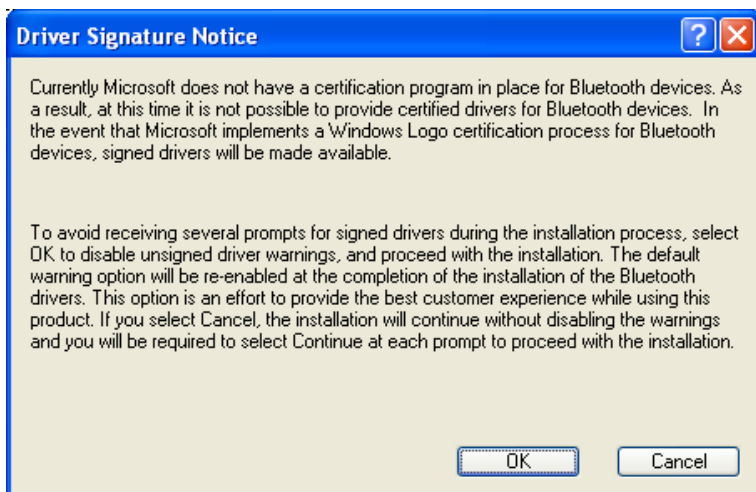
5. On the *Destination Folder* screen, click the **Change** button to browse to a new destination folder for the Bluetooth software. Otherwise, click the **Next** button to accept the default folder.



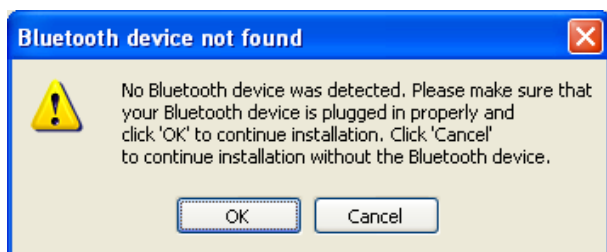
6. The InstallShield Wizard is ready to install the Bluetooth software. If you need to review or change any settings, click the **Back** button. Click the **Cancel** button to exit the Wizard. Otherwise, click the **Install** button



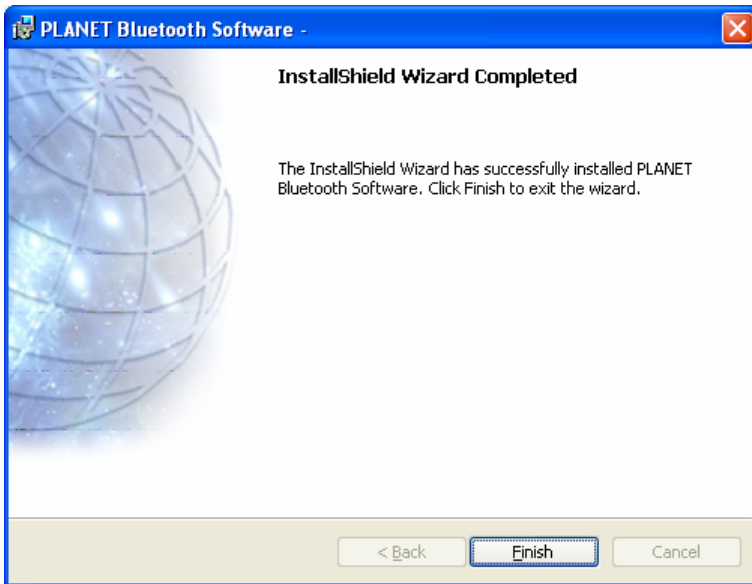
7. In Windows 2000/XP/Server 2003, you may see the screen below, click **OK** at the following message. In Win98/Me, installation may ask you to insert Windows Resource CD. Please insert your Win98/Me CD and click **Yes**.



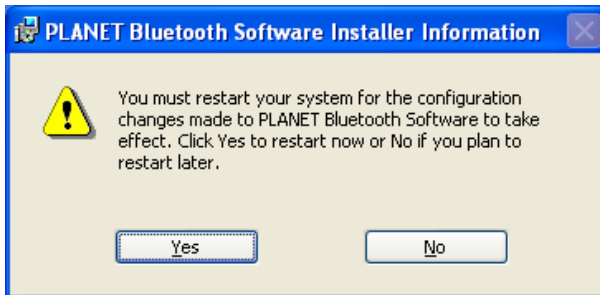
8. This screen will prompt you the Bluetooth device is not found. Please press **Cancel** to continue.



9. When finished, click **Finish** to end the Installation Wizard.



10. Please click **Yes** to restart your computer.



## 2.2 Software Un-installation

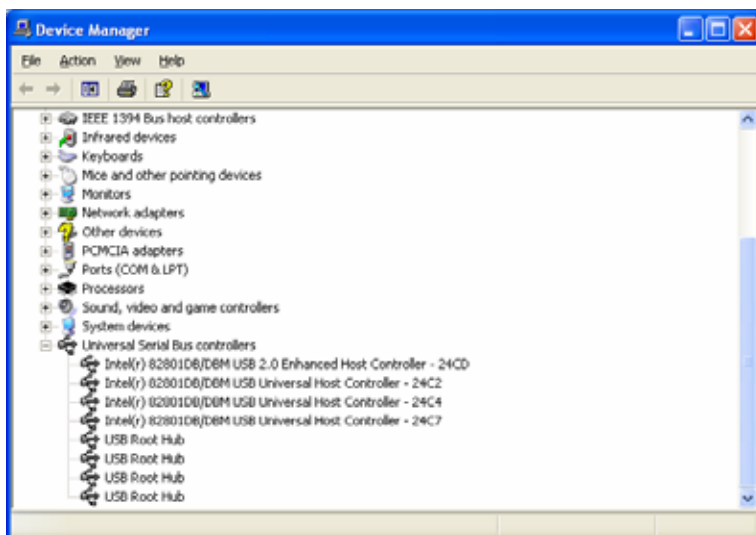
1. In Windows, go to Start → Settings → Control Panel → Add or Remove Programs.
2. Select "PLANET Bluetooth Software" and click the "Remove" button.

## 2.3 Hardware Installation

**Note:** The hardware installation should be only performed after the software is well installed.

### Precaution

Before the installation, make sure the USB port exists in your computer and is enabled. To check this, go to **My Computer** → **Control Panel** → **System**. Open the Device Manager tab. If the **Universal Serial Bus controller** device is found, it means your USB port is installed and enabled. If not, either no USB port is installed or the USB bios is not properly enabled. In this case, consult your computer dealer for USB support.

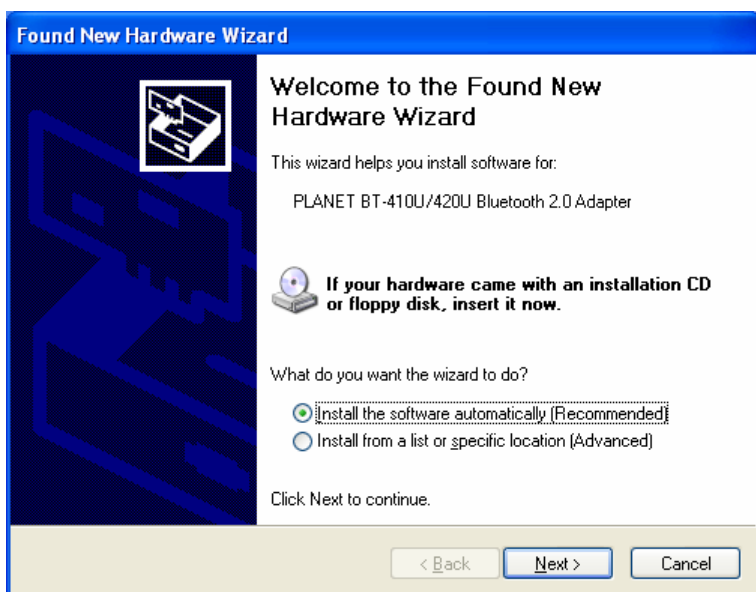


## Procedures

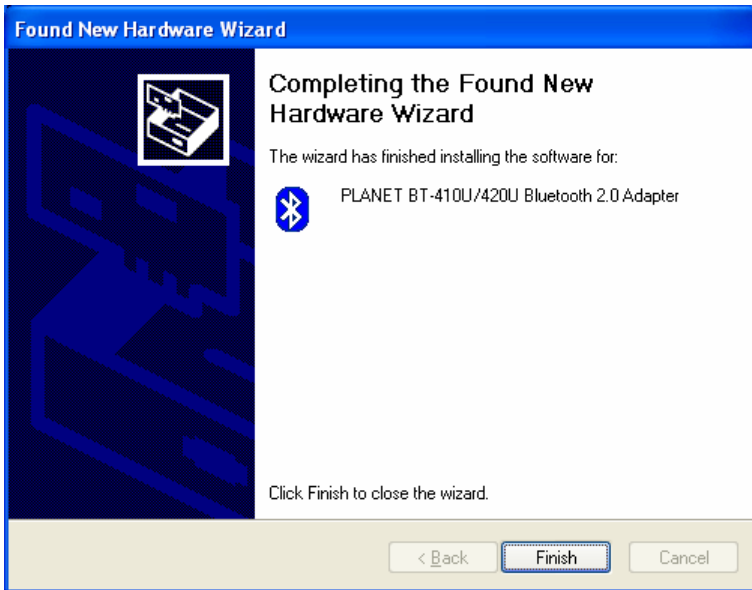
1. Please make sure you have see the bluetooth icon in the system tray like below.



2. Plug your BT-410U/420U into the PC USB port.
3. Windows will detect the device and ask the driver. Please select **Install the software automatically (Recommended)** and click **Next**.



4. Please click Finish to completed driver installation.



5. When the driver installed. You will see the bluetooth icon turn into white like below.

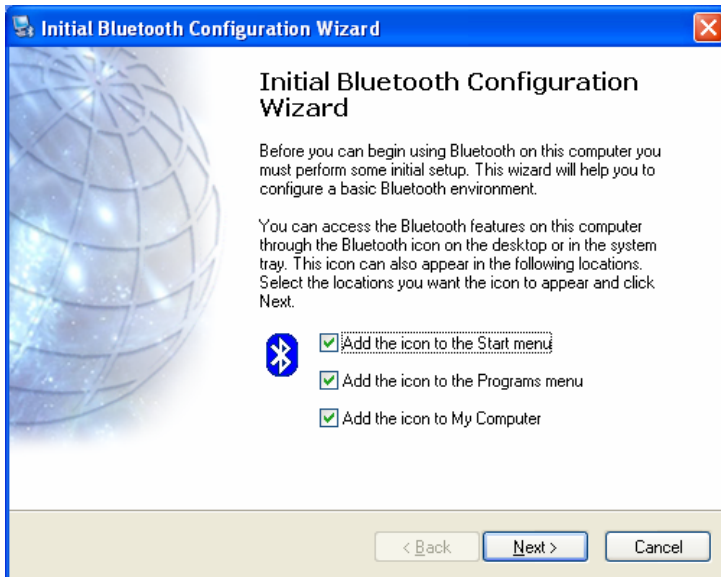


## 2.4 Initial Bluetooth Configuration



Double click this icon to make the initial Bluetooth configuration.

1. The following message is shown to prompt you to select the location where you want to show the Bluetooth icon. Select the location and click **Next**.



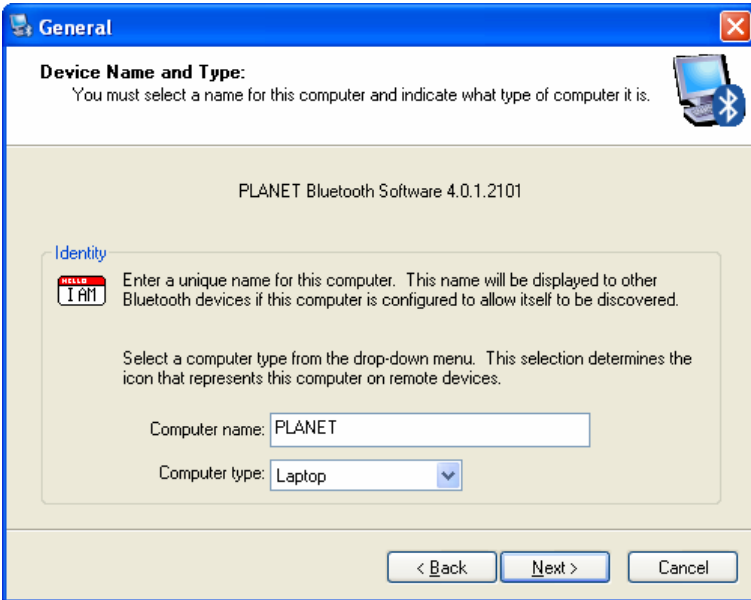
2. On the Device Name and Type screen, enter the required information:

**Computer Name**—other Bluetooth-enabled devices, when inquiring about devices within radio range, will see this user-configured device name.

The name can be changed after the installation process through the Bluetooth Software Configuration Panel.

**Computer Type**—click the down arrow ▼ and choose **Desktop** or **Laptop** from the drop-down list. The device type can be changed after the installation process through the Bluetooth Software Configuration Panel.

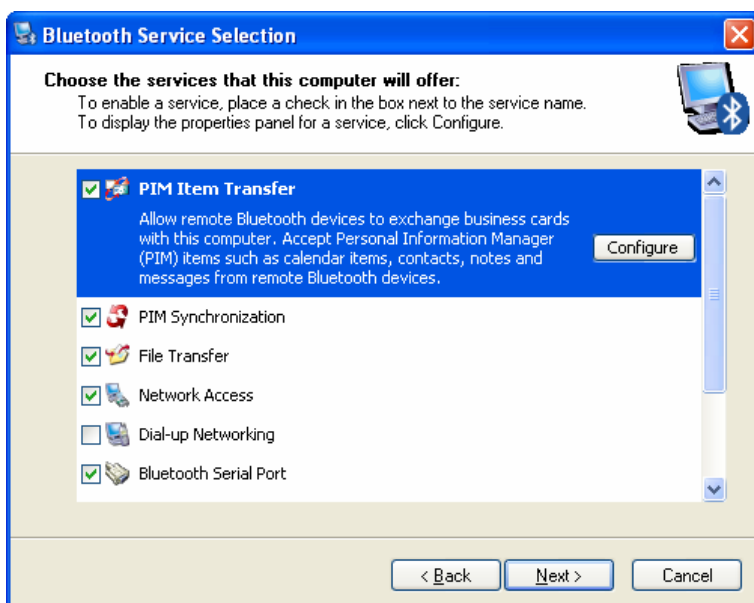
Click the **Next** button.



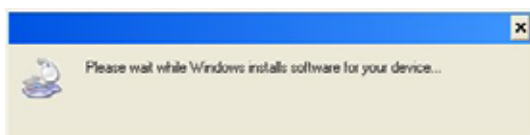
3. Click **Next** to configure the Bluetooth services that this computer will offer to the Bluetooth devices.



- Select the services you want this computer to offer and click the **Configure** if you need further configuration. Click **Next** to continue.



- The following message is shown. Please wait for a while for the software installation process to complete.



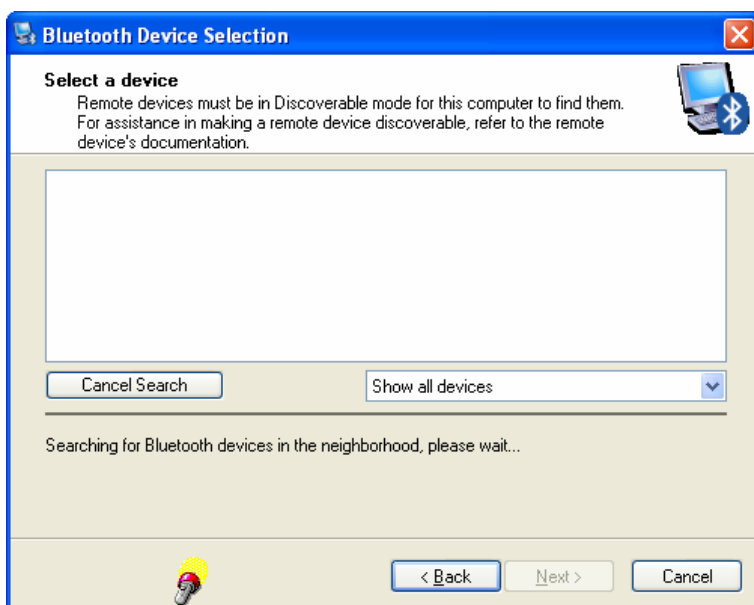
- After the service install to your PC, you may click **Skip** to finish the service installation or click **Next** and refer to step 7 to start search the Bluetooth device which you want to connect.



7. Please click Finish to complete the Bluetooth Configuration Wizard.



8. After click **Next** in step 5, you will see this screen that will show you all the Bluetooth devices which you can find. If the device you want to connect is not display in this screen, please select what kind of device you want to find in the pull-down list and click "**Search Again**". When the Bluetooth device is found, please click **Next** to connect to this device.





## 3.1 About Bluetooth Software

The Bluetooth for Windows software consists of the following components:

- **Microsoft® Windows® Explorer Extensions**—Provide access to Bluetooth devices in the immediate vicinity using Windows Explorer.
- **My Bluetooth Places**—Graphical user interface (GUI) that provides access to Bluetooth devices in the immediate vicinity. Also provides access to configure the local devices and access to perform other Bluetooth tasks.
- **BTTray Security Manager**—Controls and manages Bluetooth security levels. Also enables you to grant or deny access and to filter what can be accessed on a Bluetooth device.
- **Bluetooth for Windows Configuration Panel**—Configures your Bluetooth for Windows (BTW) software using the Windows Control Panel.
- **Stack Server**—Provides an interface for the operating system to control Bluetooth devices and to ensure that Bluetooth connections operate together correctly. The stack server has a built-in Security Manager that protects the Bluetooth device from unauthorized access.
- **Bluetooth Setup wizard**—Facilitates the configuration and modification of your Bluetooth environment. The wizard can be used to configure or change local services or to establish connections to remote devices based on service type or device type.
- **Quick Connect**—Facilitates fast connections based on service type. You are able to quickly find devices that support a particular service and establish a connection to that service. During this process, a shortcut to the service is created in My Bluetooth Places, which can be used for subsequent connections.

## 3.2 Bluetooth Tray

The Bluetooth tray resides in the Windows system tray, which is normally located in the lower-right corner of the screen. The Bluetooth tray provides fast access to most Bluetooth operations.

From the Bluetooth tray you can:

- **Access My Bluetooth Places**—double-click the Bluetooth icon, or right-click the Bluetooth icon and then select Explore My Bluetooth Places.
- **Access the Bluetooth Setup Wizard.** This wizard will help you:
  - ◆ Configure how this computer accesses a service on another Bluetooth device
  - ◆ Locate remote Bluetooth devices
  - ◆ Configure the way that this computer provides services to remote Bluetooth devices
  - ◆ Set the name and type of this Bluetooth device, e.g., “John's PC” and “Desktop.”
- **Access the Bluetooth Configuration Panel**—right-click the Bluetooth icon, and then select Advanced Configuration.
- **Access the Quick Connect option**—right-click the Bluetooth icon, select Quick Connect, and then select the type of service to which you wish to connect.
- **Start/Stop Bluetooth on this computer**

### 3.3 Access My Bluetooth Places

My Bluetooth Places is part of Windows Explorer.


































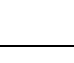
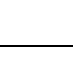
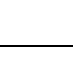
There are multiple ways to access My Bluetooth Places:

- In the Windows system tray  
Right-click the Bluetooth icon and select Explore My Bluetooth Places  
or  
Double-click the Bluetooth icon
- On the desktop, double-click the Bluetooth icon
- Open Windows Explorer and select My Bluetooth Places in the Folders pane or from the Address shortcut menu.

### 3.4 Icon Used For Bluetooth Devices And Services

The Bluetooth icon in the Windows system tray provides feedback about Bluetooth status.

Bluetooth Icon Indicates Bluetooth Status		
Enabled	Disabled	Connected
		
Blue with White	Blue with Red	Blue with Green

Device Icons for Windows 9x, Me and 2K			
Name	Normal	Connected	Paired
Audio Gateway			
Camera			
Desktop			
Headset			
Human Interface Device			
Laptop			
Modem			
Network Access Point			
Personal Digital Assistant			
Printer			
Telephone			
Unknown			

Service Icons for Windows 9x, Me and 2K			
Name	Normal	Connected	Not Available*
Audio Gateway			
Bluetooth Image Transfer			
Dial-up Networking			
Fax			
Headset			
Network Access			
PIM Item Transfer			
PIM Synchronization			
Public Folder			
Serial Port			

\*Services may be unavailable because they are in use or because the necessary hardware is not installed.

Device Icons for Windows XP			
Name	Normal	Connected	Paired
Audio Gateway			
Camera			
Desktop			
Headset			
Human Interface Device			
Laptop			
Modem			
Network Access Point			
Personal Digital Assistant			
Printer			
Telephone			
Unknown Device			

Service Icons for Windows XP			
Name	Normal	Connected	Not Available*
Audio Gateway			
Bluetooth Image Transfer			
Dial-up Networking			
Fax			
Headset			
Network Access			
PIM Item Transfer			
PIM Synchronization			
Public Folder			
Serial Port			

\*Services may be unavailable because they are in use or because the necessary hardware is not installed.

## Chapter 4

# Basic Operation



### 4.1 Start or Stop Bluetooth

**To start Bluetooth:** in the Windows system tray, right-click the Bluetooth icon and select Start the Bluetooth Device. The Bluetooth icon is blue in color with a white insert when Bluetooth is running.

**To stop Bluetooth:** in the Windows system tray, right-click the Bluetooth icon and select Stop the Bluetooth Device. The Bluetooth icon is blue in color with a red insert when Bluetooth is stopped.

### 4.2 Create A Connection From The Bluetooth Icon In The System Tray

In the Windows system tray, right-click the Bluetooth icon, select Quick Connect and then select the Bluetooth service that you wish to use.

If this computer has created a connection to the desired type of service in the past, the options on the shortcut menu are:

- The name(s) of any device(s) with which prior connections to this type of service have been established. Select a name from the list to re-establish connection.
- Other Devices...Select this option to search for additional devices that potentially provide the desired service, select a device from the list, and then click Connect.

If this computer has never created a connection to this type of service, the only option on the shortcut menu is "Find Devices..." Select this option to search for devices that potentially provide the desired service, select a device from the list, and then click Connect.

### 4.3 Create A Connection Using The Bluetooth Setup Wizard

- In Windows Explorer:  
Right-click My Bluetooth Places and select Bluetooth Setup Wizard  
or  
With My Bluetooth Places selected, from the Bluetooth menu, select Bluetooth Setup Wizard  
or  
With My Bluetooth Places selected, double-click Bluetooth Setup Wizard  
or
- From the Windows system tray:  
Right-click the Bluetooth icon and select Bluetooth Setup Wizard.

Follow the on-screen instructions.

### 4.4 Create A Connection From Entire Bluetooth

---

## Neighborhood

From Windows Explorer:

In the Folders pane, select Entire Bluetooth Neighborhood, right-click a device name and then select the preferred service from the list.

- Connect Dial-Up Networking
- Connect Bluetooth Serial Port
- Connect Network Access
- Connect Audio Gateway

**NOTE:** Only available services are displayed in the menus.

## Chapter 5

# Find Bluetooth Devices



**Search for Devices** looks for Bluetooth devices in the vicinity and displays the devices that it finds in My Bluetooth Places.

To start a search for devices, in the Folders pane of My Bluetooth Places, select Entire Bluetooth Neighborhood, and then, from the Bluetooth menu, select Search for Devices.

**NOTE:** The Bluetooth menu is visible only when My Bluetooth Places is active.

### 5.1 Periodic Search For Devices

Bluetooth can be configured to search automatically for devices on a regular basis (Bluetooth Configuration Panel > Discovery tab).

One of the advantages of Bluetooth is the mobility that the wireless connections allow. However, mobility means that devices may move in or out of connection range during the time between the automatic updates performed by Bluetooth. To be certain that the displayed list of devices in the neighborhood is current, or if automatic periodic inquiry is not enabled, force an update of the device list using the technique described in Search for Devices, above.

**Some devices within connection range may not show up in the list of devices found because:**

- Your device is configured to report only specific types or classes of devices (Bluetooth Configuration Panel > Discovery tab, on your device).
- The unlisted device is configured to be non-discoverable. Refer to the unlisted device's documentation for assistance in making that device discoverable.

**NOTE:** If you enable the periodic search for devices feature you may experience some performance degradation while the search is in process, depending on the type of system you have.

### 5.2 Find A Service

The process of determining the services that a device provides is called Service Discovery.

**To initiate a Service Discovery**, in the Folders pane of My Bluetooth Places, right-click a device name and select Discover Available Services from the shortcut menu. Bluetooth services are those things that this computer can do for remote Bluetooth devices. For example, if this computer allows a remote Bluetooth device to send a fax using a fax modem that is physically attached to this computer, then this computer is providing the Bluetooth fax service.

Some services are hardware dependant; this computer cannot provide the fax service unless it has a physical fax modem, for example.

Some Bluetooth services use virtual "hardware." The Bluetooth Serial Port service, for example, does not use a physical port on this computer. Instead, it creates virtual serial ports that Windows applications can see and use as if they were actual physical ports.

Each Bluetooth service that this computer is capable of providing can be started automatically when Bluetooth starts. Each service can be setup to require security measures before allowing a remote Bluetooth device to connect.

---

Bluetooth services require a Bluetooth application on the remote device; services and applications usually have coinciding names; i.e., there is a Bluetooth Fax Service and a Bluetooth Fax Application.

The services supported by Bluetooth are:

- **Bluetooth Imaging**—allows a remote device to send images (BMP, GIF, PNG, & JPG) to this computer. Images are stored in the Bluetooth Exchange Folder.
- **Bluetooth Serial Port**—a wireless connection between two devices. This connection can be used by applications as though a physical serial cable connected the devices.
- **Dial-up Networking**—allows a device to use a modem that is physically attached to another Bluetooth device.
- **Fax**—allows a device to send a fax using a remote Bluetooth cell phone, modem, or computer.
- **File Transfer**—allows a device to perform file system operations on another Bluetooth device; browse, open, copy, etc.
- **Headset**—allows a Bluetooth headset to be used as the audio input/output mechanism for another Bluetooth device, such as a computer or cell phone.
- **PIM Item Transfer**—allows two Bluetooth devices to exchange Personal Information Manager data such as business cards, calendar items, email messages, and notes.
- **PIM Synchronization**—allows two Bluetooth devices to synchronize Personal Information Manager data.
- **Network Access**—allows a device to access a Local Area Network via a second Bluetooth device that is physically connected to the network or allows a remote device to become part of an ad hoc network provided by the Bluetooth server.
- **Audio Gateway**—allows the microphone/speakers on a Bluetooth device (typically a computer) to be used as the audio input/output mechanism for a remote Bluetooth device, such as a cell phone.

All Bluetooth servers do not necessarily provide all of these services. For example, network gateways may provide only the Network Access service.

## 5.3 Bluetooth Connection Status

The Bluetooth Connection Status dialog box displays information about the state of a connection and provides a means to disconnect an active connection.

**Display the Connection Status dialog box:** in My Bluetooth Places, from the Folders pane, select a device, and then, in the right pane of My Bluetooth Places, right-click a service name and select Status from the shortcut menu.

The Information provided is:

- **Status:** “Connected” or “Not Connected”
- **Device Name:** the name of the device to which this computer is connected.
- **Duration:** the length of time that this connection has been established, displayed in hours, minutes and seconds. Depending on the service, the connection may time out (automatically disconnect) after a specific period of inactivity.
- **Activity:** the number of bytes sent and received over the connection.
- **Signal Strength:** a graphic indicator that ranges from Too Weak through Good to Too Strong.

**NOTE:** To change the power transmission level of this computer: from the Bluetooth Configuration Panel, Hardware tab, click the Advanced button, and then change the setting in the Maximum Power Transmission drop-down list. The Advanced button is not available in all countries.

The controls in the Bluetooth Connection Status dialog box are



- **Properties button:** displays the Bluetooth Properties dialog box for this connection.
- **Disconnect button:** closes this connection.
- **Close button:** closes the Bluetooth Connection Status dialog box.

## 5.4 Send To Bluetooth

This feature is used to send information to another Bluetooth device. Data types include:

- Files from Windows Explorer
- Documents from Microsoft Office applications, including:
  - Word
  - Excel
  - Access
  - PowerPoint
- Microsoft Outlook items, including:
  - Contacts
  - Appointments
  - Tasks
  - Messages
  - Notes
- Microsoft Internet Explorer:
  - Entire web pages
  - Individual images

**To use Send to Bluetooth** (except Internet Explorer, see below)

1. In the application:
  - a) Windows Explorer—select one or more files to be transferred. Folders cannot be transferred.
  - b) Microsoft Office—only the document in the active window can be transferred.
  - c) Microsoft Outlook—select one or more items to be transferred.
2. From the File menu, select Send To, and then select Bluetooth from the shortcut menu.
3. Select a device from the shortcut menu to send the data  
or  
Select Other..., choose a device from the list, and then click OK to send the data.

### **Send via Bluetooth from Internet Explorer**

Send an entire web page:

1. From the Tools menu, select Send To Bluetooth (or click the Bluetooth icon on the toolbar)
2. In the Select Device dialog box, choose a device and then click OK.

Send a selected image:

1. Right-click the image to be transferred and select Send To Bluetooth from the popup menu.
2. In the Select Device dialog box, choose a device and then click OK.

---

## Chapter 6

# Configure Bluetooth



### 6.1 Access The Bluetooth Configuration Panel

The Bluetooth Configuration Panel provides access to settings for Bluetooth services, client applications, hardware, security, discovery, accessibility, default paths, event notification and other Bluetooth related items.

#### To Open the Bluetooth Configuration Panel

- From the Windows Control Panel, select Bluetooth Configuration
- or
- In the Windows System Tray, right-click the Bluetooth icon, and select Advanced Configuration from the shortcut menu.

### 6.2 Bluetooth Services VS. Bluetooth Applications

**Bluetooth Services** are services that this computer provides to remote Bluetooth devices. The Bluetooth services on this computer are referred to collectively in the Bluetooth configuration panel as “**Local Services**”.

**Bluetooth Applications** are software applications on this computer that allow this computer to use the Bluetooth services that are provided by remote devices. The Bluetooth applications on this computer are referred to collectively in the Bluetooth configuration panel as “**Client Applications**”.

Bluetooth Services and Bluetooth Applications usually have coinciding names; e.g., there is a File Transfer service and a File Transfer client application.

How this computer provides a service to remote devices is configured on the Local Services tab of the Bluetooth configuration panel.

How this computer uses a service that is provided by a remote device is configured on the Client Applications tab of the Bluetooth configuration panel.

### 6.3 Bluetooth Exchange Folder

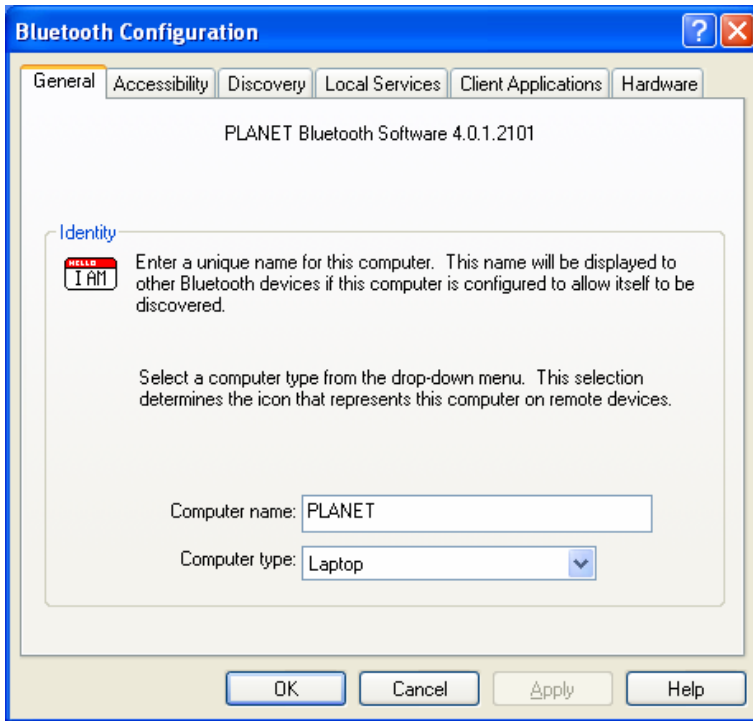
This is the highest-level directory on this computer to which a remote Bluetooth device has access.

Devices that have been granted access to the Bluetooth Exchange Folder on the computer also have access to all sub-folders contained within that folder and all files in those subfolders.

**NOTE:** The Bluetooth Exchange Folder is shared by the PIM Item Transfer and the File Transfer services and can be configured from the Properties page of either of those services. When the Bluetooth Exchange Folder is re-configured for either of these services, the other service will be updated to use the new location.

### 6.4 General Configuration Settings

The settings on the General tab of the Bluetooth Configuration Panel determine information that is displayed to remote devices.



### Identity

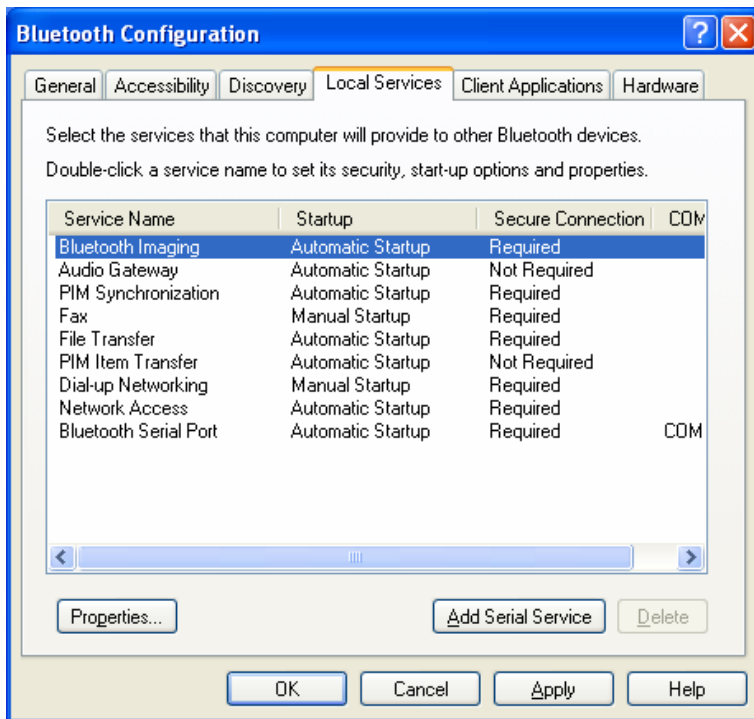
- **Computer Name**-enter a unique name to identify this computer to other Bluetooth devices in the vicinity; this field cannot be left blank.
- **Computer type**-select either Desktop or Laptop from the shortcut menu to set the type of icon remote devices will use to represent this computer.

## 6.5 Bluetooth Applications

### 6.5.1 Overview

Some built-in Bluetooth applications provide full functionality for a specific task, such as locating other Bluetooth devices or synchronizing two Personal Information Managers.

Other built-in Bluetooth applications provide a way for standard Windows applications to accomplish their tasks wirelessly. For example, a Bluetooth application may create a wireless serial connection between computers or provide wireless access to the Internet.



### The difference between Bluetooth Applications and Bluetooth Services

- **Bluetooth Applications** are software programs on this computer that allow this computer to use the Bluetooth services that are provided by other devices. In the Bluetooth configuration panel, these programs are referred to collectively as “Client Applications.”
- **Bluetooth Services** are software programs on this computer that provide a service to other devices. In the Bluetooth configuration panel, these programs are referred to collectively as “Local Services.”

**NOTE:** Client Applications and Local Services usually have coinciding names; e.g., there is a Fax service and a Fax application.

## 6.5.2 General Configuration

All of the built-in Bluetooth applications allow you to rename the application and to require a secure connection when using the application.

### To access the configuration properties page for a built-in Bluetooth application

- In the Windows system tray, right-click the Bluetooth icon and select Advanced Configuration from the shortcut menu
- or
- From the Windows control panel select Bluetooth Configuration
- or
- From Windows Explorer, right-click Entire Bluetooth Neighborhood and select Properties from the shortcut menu.

In the Bluetooth configuration panel, Client Applications tab, highlight the application to be configured, and then click Properties (or double-click the application).

## 6.5.3 Human Interface Device

### Overview

The Human Interface Device (HID) Application allows this computer to wirelessly use one or more remote Bluetooth HIDs as input/output devices.

For example, the HID Application allows this computer to use a Bluetooth keyboard and a Bluetooth mouse.

### **Create a Bluetooth HID connection**

**NOTE:** Some HID devices have multiple modes. Before establishing a connection, be sure the HID is in the appropriate mode. For example, in the case of an HID that can function as both a mouse and a laser pointer, be sure the mode switch is set to "Mouse" before attempting to connect.

Open a connection to a Bluetooth Human Interface Device using one of these techniques:

- From My Bluetooth Places
- Using the Bluetooth Setup Wizard

Once an HID connection is established, that connection will persist. If the computer is shut down, when the computer is turned on again the connection will re-establish automatically.

**NOTE:** HID devices usually have a button, which is sometimes difficult to find, that must be pressed before other Bluetooth devices can locate the HID. Even after the button is pressed, the HID can be discovered only for a limited time, and then the button must be pressed again. The time period can be as short as 30 seconds or as long as 180 seconds. Read the documentation that accompanies the HID before you attempt to connect to the device.

### **Close an HID connection**

Under normal circumstances, there is no reason to close an HID connection; once established the connection is maintained automatically, even during the power off and power on processes.

If, for some reason, the connection must be closed: from My Bluetooth Places, right-click the service name, and from the shortcut menu, select Disable.

When an HID connection is closed manually by the operator, the connection's "persistence" is broken. The connection must be re-established manually, after which the connection will again persist until broken manually.

### **Configure**

No configuration is necessary.

## **6.5.4 Audio Gateway**

### **Overview**

The Audio Gateway Application allows a remote Bluetooth device to use this computer's microphone and speakers as the remote device's audio input and output devices.

### **Create a Bluetooth Audio Gateway connection**

Open a connection to the Audio Gateway service that is provided by another Bluetooth device using one of these techniques:

- Windows system tray, Bluetooth icon
- From My Bluetooth Places
- Using the Bluetooth Setup Wizard

### **Close an audio gateway connection:**

If the connection was established from the Bluetooth icon in the Windows system tray; click the Bluetooth icon, select Quick Connect, Audio Gateway and then select the device that is providing the service (active connections have a checkmark in front of them).

or

---

No matter how the connection was created, in My Bluetooth Places, right-click the service name and select Disconnect.

## Configure

The Bluetooth Configuration Panel > Client Applications > Audio Gateway > General tab provides options to configure:

- The application name - to change it, highlight the existing name and enter the new name.
- Enable or disable secure connection. To enable secure connection, select the check box.

## 6.5.5 Bluetooth Serial Port

### Overview

The Bluetooth Serial Port application allows this computer to establish a wireless serial connection with a remote Bluetooth device.

The applications on both this computer and the remote device must be configured to send and receive data to and from the respective communications port (COM port) assigned to the Bluetooth serial port. The wireless serial connection may then be used by the applications as though a physical serial cable connected the devices.

### Create a Bluetooth Serial Port connection

Establish a connection using one of these techniques

- Windows system tray, Bluetooth icon
- From My Bluetooth Places
- Using the Bluetooth Setup Wizard

### Close a Bluetooth Serial Port connection

- If the connection was established from the Bluetooth icon in the Windows system tray; click the Bluetooth icon, select Quick Connect, Bluetooth Serial Port and then select the device that is providing the service (active connections have a checkmark in front of them).

or

- No matter how the connection was created, In My Bluetooth Places, right-click the service name and select Disconnect.

## Configure

The Bluetooth Configuration Panel > Client Applications > Bluetooth Serial Port > General tab provides options to configure:

- The application name—to change it, highlight the existing name and enter the new name.
- Enable or disable secure connection. To enable secure connection, place a checkmark in the box.
- The communications port (COM port) to be used.

**NOTE:** Unless you have a specific reason to do so, DO NOT CHANGE the default COM Port setting.

## 6.5.6 Dial-up Networking

### Overview

The Bluetooth Dial-up Networking application allows this computer to use a modem that is physically connected to a remote device to access the Internet, log on to a remote network.

Open a connection to the Dial-up Networking service that is provided by another Bluetooth device using one of these techniques:

- Windows system tray, Bluetooth icon
- From My Bluetooth Places
- Using the Bluetooth Setup Wizard

After the Bluetooth dial-up networking connection is established it can be used the same way as any other networking connection. For example, you can open a browser and explore the World Wide Web, if the remote computer has Internet access.

### **Close a Dial-up Networking connection**

- In My Bluetooth Places, right-click the service name and select Disconnect  
or
- If the connection was established from the Bluetooth icon in the Windows system tray; click the Bluetooth icon, select Quick Connect, Dial-up Networking and then select the device that is providing the service (active connections have a checkmark in front of them).

### **Configure**

The Bluetooth Configuration Panel > Client Applications > Dial-up Networking > General tab provides options to configure:

- The application name—to change it, highlight the existing name and enter the new name.
- Enable or disable secure connection. To enable secure connection, place a checkmark in the box.
- The Bluetooth virtual device to be used.

**NOTE:** Unless you have a specific reason to do so, **DO NOT CHANGE** the default Bluetooth device or alter the device's configuration.

## **6.5.7 Fax**

### **Overview**

The Bluetooth Fax service allows this computer to send a fax using a Fax/Modem that is physically connected to a remote device.

#### **To Send a Fax**

1. Open a connection to the Fax service that is provided by another Bluetooth device, using one of these techniques:
  - Windows system tray, Bluetooth icon
  - From My Bluetooth Places
  - Using the Bluetooth Setup Wizard
2. Open or create the document to be faxed and select the "Print," "Send to Fax Recipient" or similar command that is available in most applications.

### **Close a Fax Connection**

Fax connections close automatically when the Fax transmission is complete.

### **Configure**

The Bluetooth Configuration Panel > Client Applications > Fax > General tab provides options to configure:

- The application name—to change it, highlight the existing name and enter the new name.
- Enable or disable secure connection. To enable secure connection, place a checkmark in the box.

## **6.5.8 Headset**

---

## Overview

The Headset application allows this computer to use a Bluetooth headset (or any other device that offers the Bluetooth headset service) as the audio input and output device for this computer.

Possible uses include:

- If this computer has on-board telephone hardware, a Bluetooth headset might be used as the audio input/output device to make/receive telephone calls.
- If this computer has voice recognition capabilities, a Bluetooth headset might be used as the audio input device.

Any other scenario that requires audio input/output can potentially take advantage of a Bluetooth headset to replace a hardwired microphone and/or speakers.

## Create a Headset connection

Establish a connection using one of these techniques:

- Windows system tray, Bluetooth icon
- From My Bluetooth Places
- Using the Bluetooth Setup Wizard

**NOTE:** Most Bluetooth headsets “ring” when a connection is attempted; answer the ring to complete the connection and begin using the headset as the audio input/output device for this computer.

## Close a Headset connection

- In My Bluetooth Places, right-click the service name and select Disconnect.
- or

- If the connection was established from the Bluetooth icon in the Windows system tray; click the Bluetooth icon, select Quick Connect, Headset and then select the device that is providing the service (active connections have a checkmark in front of them)

## Configure

The Bluetooth Configuration Panel > Client Applications > Headset > General tab provides options to configure:

- The application name—to change it, highlight the existing name and enter the new name.
- Enable or disable secure connection. To enable secure connection, place a checkmark in the box.

## 6.5.9 File Transfer

### Overview

The Bluetooth File Transfer application allows this computer to perform file operations on the Bluetooth Exchange Folder (and the folders and files it contains) of a remote device.

### Copy to/from a remote device

1. In the Folders pane of Windows Explorer, from the Entire Bluetooth Neighborhood branch, select a device and expand that branch to view the Bluetooth Exchange Folder of the remote device.

**NOTE:** If “Public Folder” is not available, the remote device is not configured to allow remote file operations.

2. Use drag-and-drop to copy any file or folder contained in the Public Folder of the remote device to the desired folder on this computer. You can also drag-and-drop files or folders from this computer to the Public Folder (and its sub-folders) of the remote device.



## Other file operations

Right-click a file or folder in the remote device's Public Folder for a context sensitive menu. All potential menu options may not be available at all times.

Potential menu options include:

- Open—opens the selected file on this computer, using the default application for this type of file.
- Print—sends the selected file to this computer's default printer.
- Send To
  - 3 ½ floppy (A)—sends the selected file to the 3 ½ inch floppy drive on this computer
  - Bluetooth Exchange Folder—sends the selected file to the Bluetooth Exchange Folder on this computer.
- Rename—applies only to empty folders; file names and the names of folders that contain objects cannot be changed using this technique.
- Cut, Copy, Paste, Delete, Refresh, View & New—standard Windows functions.

## Configure

The Bluetooth Configuration Panel > Client Applications > File Transfer > General tab provides options to configure:

- The application name—to change it, highlight the existing name and enter the new name.
- Enable or disable secure connection. To enable secure connection, place a checkmark in the box.

## 6.5.10 Network Access

### Overview

The Bluetooth Network Access application makes it possible for this computer:

- To connect to a Local Area Network from a physical connection on a remote Bluetooth device.
- or
- To connect to an ad hoc network provided by a remote Bluetooth device. When joining an ad hoc network, it can take up to one minute after the connection is established to obtain an IP address and automatically self-configure.

The type of network connection that is available is determined by the configuration of the remote Bluetooth device.

### Create a Network Access connection

Establish a connection using one of these techniques

- Windows system tray, Bluetooth icon
- From My Bluetooth Places
- Using the Bluetooth Setup Wizard

### Close a Network Access connection

- In My Bluetooth Places, right-click the service name and select Disconnect.
- or
- If the connection was established from the Bluetooth icon in the Windows system tray; click the Bluetooth icon, select Quick Connect, Network Access and then select the device that is providing the service (active connections have a checkmark in front of them).

## Configure

---

The Bluetooth Configuration Panel > Client Applications > Network Access > General tab provides options to configure:

- The application name—to change it, highlight the existing name and enter the new name.
- Enable or disable secure connection. To enable secure connection, place a checkmark in the box.

## 6.5.11 PIM Synchronization

### Overview

The PIM Synchronization Application is used to synchronize the Personal Information Manager (PIM) database of this computer with the PIM database of a remote Bluetooth device.

The supported PIMs are:

- Microsoft Outlook
- Microsoft Outlook Express
- Lotus Notes.

**The supported data types are:**

- Business cards
- Calendar items
- Email (with or without attachments)
- Notes.

### Configure PIM Synchronization

The Bluetooth Configuration Panel > Client Applications > PIM Synchronization > General tab provides options to configure:

- The application name—to change it, highlight the existing name and enter the new name.
- Enable or disable secure connection. To enable secure connection, place a checkmark in the box.
- The PIM items to be synchronized and the PIM on this computer with which those items should be synced.

**NOTE:** If synchronization is enabled for a specific item type, but is not enabled for that item type on the remote device, synchronization WILL NOT take place for that item.

- The data item types which can be synchronized are:

Business cards

Calendar items

Email (with or without attachments-see below)

Notes

Possible synchronization options for each of these data item types include:

**Do Not Synchronize**-this item type will not be synchronized

**Synchronize Microsoft Outlook**-this item type will be synced with its matching entry in Microsoft Outlook, regardless of the PIM that contains this entry on the remote device. If a matching Outlook entry does not exist, it will be created

**Synchronize Outlook-Express**-this item type will be synced with its matching entry in Express, regardless of the PIM that contains this entry on the remote device. If a matching Express entry does not exist, it will be created

**Synchronize Lotus Notes**-this item type will be synced with its matching entry in Lotus Notes, regardless of the PIM that contains this entry on the remote device. If a matching Notes entry does not exist, it will be created.

**NOTE:** Not all choices are available for all items. For example, “Note” items can be synchronized only in Microsoft Outlook. Therefore Lotus Notes and Outlook Express are not displayed as options in the “Notes” item shortcut menu. Personal Information Managers that are not installed on this computer are not displayed as options in the shortcut menus.

- Email attachments. The only option is to include or not to include attachments with email that is sent or received on this computer using this service.

## 6.5.12 PIM Item Transfer

### Overview

The Bluetooth PIM Item Transfer application allows this computer to send and receive Personal Information Manager items to and from a remote Bluetooth device.

The supported items are:

- Business cards (\*.vcf or \*.vcd)
- Notes (\*.vnt)
- Email (\*.vmg)
- Calendar (\*.vcs)

Item transfer can be accomplished several ways:

- From Windows Explorer, My Bluetooth Places, highlight the PIM Item Transfer service on a remote device, and then, from the Bluetooth menu on the Windows menu bar, select the appropriate action.
- From within a supported Personal Information Manager:  
Select one or more items and then, from the PIM's File menu, select Send to Bluetooth.  
or  
Drag-and-drop a supported item directly from your PIM to the PIM Item Transfer service icon of a remote device.
- For business cards:  
From Windows Explorer, My Bluetooth Places, right-click the PIM Item Transfer service on a remote device and select the appropriate option.  
or  
In the Windows system tray, right-click the Bluetooth icon, select Quick Connect > Business Card Exchange, select a device from the list, select the appropriate option from the shortcut menu, and then click OK.

Whether sent items are accepted by the remote device is determined by how the remote device's PIM Item Transfer service is configured.

### Close a PIM Item Transfer Connection

This application closes the open connection automatically when its task is complete.

### Configure PIM Item Transfer

The Bluetooth Configuration Panel > Client Applications > PIM Item Transfer > General tab provides options to configure:

- The application name—to change it, highlight the existing name and enter the new name.
- Enable or disable secure connection. To enable secure connection, place a checkmark in the box.
- How your business card is handled when it is requested by a remote device.

The Send My Business Card options are:

Choose a business card as needed—each time a remote device requests your business card you must select a card from your PIM. If you ignore the request the remote device will receive a timeout notice.

---

Always send the same business card—when this option is selected a dialog box is displayed that allows you to set a default business card that will be sent automatically when requests are received.

- Where to store received business cards. The Received Business Cards options are:

- Microsoft Outlook
- Outlook Express
- Lotus Notes

**NOTE:** The selected Received Business Cards option does not influence the settings on other PIM-related property pages. For example, even if the PIM Item Transfer service business card option on this computer is configured to “Do Not Accept,” the PIM Item Transfer application will still accept business cards that the application has specifically requested from its “Receive” or “Exchange” functions.

- Email attachments. The only option is to include or not to include attachments with email that is sent or received on the computer using this service.

### 6.5.13 Printer

#### Overview

The Bluetooth Printer application allows this computer to use a Bluetooth printer. Once a Bluetooth printer has been properly installed, it can be used from this computer in the same way as any other printer would be.

#### Configure

The Bluetooth Configuration Panel > Client Applications > Printer > General tab provides options to configure:

- The application name—to change it, highlight the existing name and enter the new name.
- Enable or disable secure connection. To enable secure connection, place a checkmark in the box.

#### Install a Bluetooth Printer

##### Option One:

1. Perform a search for devices and then, from Entire Bluetooth Neighborhood, right-click a Bluetooth printer, select Add Printer from the shortcut menu and follow the on-screen instructions.
2. Select the printer make and model at the prompt. If your printer is not in the list of options, click Have Disk..., insert the driver disk for the printer, and then navigate to the drive and directory that contains the driver initiation file (\*.inf) for the printer.
3. Follow the on-screen instructions to complete the installation.

##### Option Two:

1. From the Windows Control Panel, select Printers > Add Printer > Next > Local printer > Next.
2. On the Select the Printer Port screen of the wizard:
  - a) Select Create a new port.
  - b) In the Type shortcut menu, select Bluetooth Printer Port, and then click Next.
3. On the next screen, select the printer by name, and then click Connect.
4. Install the driver: Select the printer make and model at the prompt. If your printer is not in the list of options, click Have Disk..., insert the driver disk for the printer, and then navigate to the drive and directory that contain the driver initiation file (\*.inf) for the printer.
5. Follow the on-screen instructions to complete the installation.

## Delete a printer:

Click Start > Settings > Printers, right-click the printer to be deleted, and then select Delete from the shortcut menu.

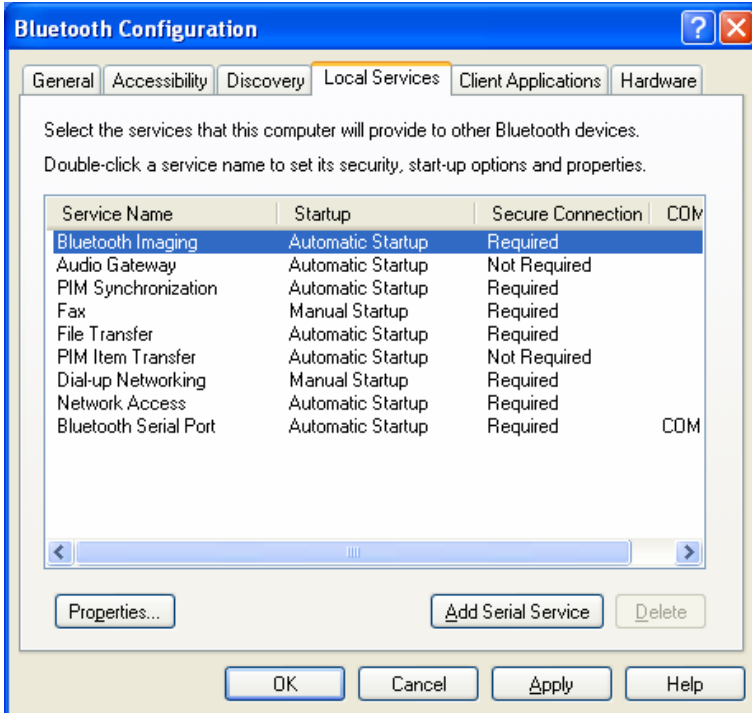
or

In Entire Bluetooth Neighborhood, right-click an installed Bluetooth printer and select Delete Printer from the shortcut menu.

## 6.6 Bluetooth Services

### Common Configuration Settings

These properties can be set individually for each Bluetooth service:



- **Service Name**—the default name of each service can be changed.
- **Secure Connection**—requires that remote devices provide proof of identity and that all data be encrypted.
- **Startup Automatically**—starts the service automatically when Bluetooth is started.
- **Notifications**—provides visual and/or audio notification that a remote device is attempting to connect (or has connected) to a service on this computer.

### 6.6.1 Notifications

#### Overview

There are three types of notification:

- Authentication request, also called a PIN code request—this notification is displayed automatically in a balloon over the Windows system tray if a Personal Identification Code is required before a connection can proceed. An audio file can also be associated with the notification.
- Authorization request, also called a connection request—this type of notification can be visual, audio, or both. It notifies you of attempts to access a Bluetooth service on this computer; the connection will not proceed until you click the balloon

---

that is displayed over the Windows system tray. If the notification balloon is ignored, the connection request will time out and fail.

- Notification only—this type of notification does not affect access in any way; it is solely for information purposes to let you know that a connection has been established.

### **Example**

Both Authentication and Authorization request notifications are controlled by whether Secure Connection is enabled for an individual service.

An example of how notifications might work when a remote device attempts to access a service on this computer, if all notifications are enabled:

1. Authentication: a balloon notification (audio optional) prompts you for a PIN code. If the PIN code does not match the code entered on the remote device, the connection will not be allowed. Once the remote device has been authenticated this notification will not appear again, unless the paired relationship is broken. If the paired relationship is broken, the devices must re-pair.
2. Authorization: a balloon notification is displayed and/or a sound file provides audio notification that a remote device is attempting to access a Bluetooth service on this computer. Click the balloon to proceed. A dialog box prompts you to enable the connection only once, or to allow this device to use the service every time.
3. Once a connection has been authorized, an additional visual and/or audio notification may be displayed (if enabled). This notification is for information only to inform the operator that a connection has been established.

After two devices are paired (step 1, above), the authentication notification will no longer be displayed when a connection is attempted.

If “Always allow...” is enabled during the authorization process (step 2, above), the authorization notification will not be displayed on future connection attempts.

Connection notification (step 3, above) only happens if it has been enabled on the Notifications tab of the individual service being accessed.

### **Service Access Notification**

“Notifications” lets you associate a sound (Windows \*.wav file) and/or a visual indication with access attempts by remote devices.

A different notification sound can be associated with each local Bluetooth service.

#### **Associate a sound with service access**

From the Bluetooth Configuration Panel, Local Services tab:

1. Double-click a service name and then select the Notifications tab.
2. Check the options you want; both visual and sound notifications may be selected for a single event.
3. Choose a sound; click the Browse button and navigate to the sound file (\*.wav) to be used for notification. To preview the sound file, click the play button.
4. Click OK to close the service's property dialog box.

### **6.6.2 Audio Gateway**

The Bluetooth Audio Gateway service enables the computer to use the microphone and speakers on a remote Bluetooth device as the input and output devices for the computer.

For example, if this computer has voice recognition capabilities, a Bluetooth headset might be used as the audio input device.

#### **Hardware Requirements**

- The Bluetooth hardware on this computer and on the remote device must support audio.

- The remote device handles both audio input and output for this computer; therefore, this computer does not require a sound card, microphone, or speakers.

### **Configure the Audio Gateway Service**

From the Windows system tray, right-click the Bluetooth icon, select Advanced Configuration > Local Services, and then double-click the Audio Gateway service. Set the common configuration properties of the service, and then click OK.

### **6.6.3 Bluetooth Serial Port**

The Bluetooth Serial Port service enables a remote Bluetooth device to establish a wireless serial connection with this computer. The wireless serial connection may be used by applications as though a physical serial cable connected the devices.

#### **To establish a Bluetooth Serial Port connection**

The connection must be initiated from the remote device by the Bluetooth Serial Port application.

#### **Determine the communications port being used by this computer for the Bluetooth Serial Port**

In the Windows system tray, right-click the Bluetooth icon, select Advanced Configuration, and then select the Local Services tab. The COM port assigned to this service is the last item in the Bluetooth Serial Port service row. Configure the application on this computer that will use this service to send its data to this COM.

#### **Add a Bluetooth Serial Port**

The Bluetooth Serial Port service has one pre-configured Bluetooth Serial Port, but additional Bluetooth Serial Ports can be added as needed.

#### **To add a port**

1. From the Bluetooth Configuration Panel, Local Services tab, click Add Serial Service.
2. In the properties dialog box, modify the properties:
3. Enter a unique name (fewer than 99 alphanumeric characters).
4. Select secure connection, if you want.
5. Select Startup Automatically, if you want
6. From the COM Port shortcut menu select a communications port that is not assigned to any other service.
7. Click OK.

#### **To remove a Bluetooth Serial Port**

From the Bluetooth Configuration Panel, Local Services tab, select the port to be removed and then click Delete.

**NOTE:** The Delete button is only available when a Bluetooth Serial Port is selected.

### **6.6.4 Dial-up Networking Service**

The Bluetooth Dial-up Networking service makes it possible for a remote Bluetooth device to use a modem that is physically connected to this computer. The remote device can then access the Internet or log on to a remote network.

#### **Configure the Dial-up Networking service:**

From the Windows system tray, right-click the Bluetooth icon, select Advanced Configuration > Local Services, and then double-click the Dial-up Networking service.

- Select the physical modem to be used from the Modems: shortcut menu.
- Set the common configuration properties of the service, and then click OK.

---

## 6.6.5 Fax Service

The Fax service allows a remote Bluetooth device to send a Fax via a modem that is physically attached to this computer.

### Configure the Fax service:

From the Windows system tray, right-click the Bluetooth icon, select Advanced Configuration > Local Services, and then double-click the Fax service.

- Select the physical modem to be used from the Modems: shortcut menu.
- Set the common configuration properties of the service, and then click OK.

## 6.6.6 File Transfer Service

### Overview

The File Transfer service allows this computer to perform file operations on the Bluetooth Exchange Folder (and the folders and files it contains) of a remote device.

To use the File Transfer Service:

1. Right-click the Bluetooth icon and select Explore My Bluetooth Places.
2. Configure Windows Explorer so that the Folders pane is visible (View > Explorer Bar > Folders).
3. In the Folders pane, select Entire Bluetooth Neighborhood
4. On the menu bar, select Bluetooth > Search For Devices.
5. In the Folders pane, expand Entire Bluetooth Neighborhood to show the devices in the vicinity.
6. Select a device and expand that branch to view the Bluetooth Exchange Folder of the remote device.

**NOTE:** If "Public Folder" is not available, the remote device is not configured to allow remote file operations.

Use drag-and-drop to copy any file or folder contained in the Public Folder of the remote device to a folder on this computer.

You can also drag-and-drop files or folders from this computer to the Public Folder (and its sub-folders) of the remote device.

### Other file operations

Right-click a file or folder in the remote device's Public Folder for a context sensitive menu. All potential menu options may not be available at all times.

Potential menu options include:

- Open—opens the selected file on this computer, using the default application for this type of file.
- Print—sends the selected file to this computer's default printer.
- Send To
  - 3 ½ floppy (A)—sends the selected file to the 3 ½ inch floppy drive on this computer
  - Public Folder on My Device—sends the selected file to the Public Folder on this computer.
- Rename—applies only to empty folders; file names and the names of folders that contain objects cannot be changed using this technique.
- Cut, Copy, Paste, Delete, Refresh, View & New—standard Windows functions.

## 6.6.7 Headset Service

The Bluetooth Headset Service allows this computer to provide audio input/output for remote Bluetooth devices.



For example, if the remote device is a Bluetooth telephone, this computer's microphone and speakers can be used as speakerphone input and output for that device.

### Hardware Requirements

- This computer must have a sound card, microphone, and speakers installed.
- The Bluetooth hardware on this computer and on the remote device must support audio.

### Configure the Headset Service

- From the Windows system tray, right-click the Bluetooth icon, select Advanced Configuration > Local Services, and then double-click the Headset service.
- Set the common configuration properties of the service, and then click OK.

### Usage Example with a Bluetooth Telephone

From the Bluetooth phone, search for devices that offer the Headset Service, select the Headset Service on this computer, and then select Connect.

**NOTE:** Individual Bluetooth phone manufacturers may use different terminology to describe the Headset Service, but the word "audio" and/or "headset" should be in the description— refer to the documentation included with the Bluetooth phone for assistance.

If the Headset Service has Secure Connection enabled, a PIN code and Authorization will be required to complete the connection.

When the phone successfully connects to the Headset Service:

- In the Windows system tray, the Bluetooth icon will be a blue field with a green insert (if another Bluetooth connection existed before this connection was established, the icon would have already been this color).
- A notification balloon will appear briefly above the Bluetooth icon with a message similar to:

Bluetooth Connection Successful

Bluetooth device My Bluetooth Cell Phone is connected to the 'Headset' service on this computer.

The Headset Service now monitors the phone and displays a notification balloon over the Bluetooth icon in the Windows system tray when an incoming call is detected.

Click the balloon to acknowledge the notification, and then, in the Incoming Call dialog box, click the Accept button to accept the call.

The audio signal from the phone is re-routed to the audio output device (speakers or earphones) on the computer, and the microphone on the computer provides the audio input for the phone.

To reject the incoming call, when the Incoming Call dialog box is displayed, click the Reject button.

## 6.6.8 Network Access

The Bluetooth Network Access service enables a remote Bluetooth device to access a Local Area Network that is physically attached to this computer or allows a remote device to become part of an ad hoc network provided by this computer.

After this computer has been configured to provide the Network Access service to other Bluetooth devices, it will not be able to use the Bluetooth Network Access service provided by another Bluetooth device without being re-configured. In other words, this computer cannot be both a Bluetooth Network Access server and a Bluetooth Network Access client at the same time.

### 6.6.8.1 Setup for Windows 98SE & Windows Me

---

**NOTE:** Internet Protocol routing software is required on Windows 98SE and Windows Me servers. Install and configure the routing software as instructed by the software's manufacturer before you configure the computer as a Network Access server.

### **Configure the server:**

1. From the Windows Control Panel, double-click the Network icon.
2. On the Configuration tab, select TCP/IP-> Bluetooth LAN Access Server Driver (scroll down if necessary).
3. Click Properties and select the IP Address tab.
  - a) Select Specify an IP address
  - b) Enter an IP Address (suggested value—192.168.1.1)
  - c) Enter a Subnet Mask (suggested value—255.255.255.0)
4. Click OK to close each dialog box, and then click YES to restart the computer.

### **6.6.8.2 Setup for Windows 2000 and Windows XP**

If Internet Connection sharing was previously enabled (before BTW was installed) it must be disabled and then re-enabled before the Bluetooth network adapter can use it.

Configure for Network Access:

1. From the Windows system tray, right-click the Bluetooth icon and select Advanced Configuration from the shortcut menu.
2. In the Bluetooth configuration panel, select the Local Services tab, Network Access and then click Properties....
3. From the Network Access, General properties page, in the Type of service shortcut menu, select "Allow other devices to access the Internet/LAN via this computer," and then click Configure Connection Sharing.
4. Right-click Local Area Connection, select Properties and then select the Sharing tab.
5. Select Enable Internet Connection Sharing for this connection, click OK, and then click YES in the confirmation dialog box.

### **6.6.8.3 Configure for Group Ad Hoc Networking:**

1. From the Windows system tray, right-click the Bluetooth icon and select Advanced Configuration from the shortcut menu.
2. In the Bluetooth configuration panel, select the Local Services tab, Network Access and then click Properties....
3. From the Network Access, General properties page, in the Type of service shortcut menu, select "Allow other devices to create a private network with this computer."
4. Click OK.

## **6.6.9 Bluetooth Image Transfer**

This service allows images to be exchanged between this computer and other Bluetooth devices that support Bluetooth image transfer.

Supported image formats include:

- BMP
- GIF
- PNG
- JPG

**NOTE:** A battery-powered remote device, such as a cell phone or camera, may require that Bluetooth be specifically enabled before the device can accept an image; see the documentation included with the device for more information. Some devices, particularly battery-powered devices such as phones and cameras, may only be able to accept images in one format and at a single fixed resolution. In that case, the image

is converted to the required format and resolution before it is transferred to the remote device.

To transfer an image, choose one of the following methods:

- Right-click an image or a selected group of images, select Send To, Bluetooth, and then select the Bluetooth device to which the image will be sent.
- Drag-and-drop an image or a selected group of images onto the Bluetooth Image Service icon of a remote device.
- Copy an image or a selected group of images to the Windows clipboard, right-click the remote device icon, and then, from the shortcut menu, select Paste.

## 6.6.10 PIM Item Transfer

### Overview

The PIM Item Transfer service allows Personal Information Manager items to be transferred between this computer and a remote Bluetooth device.

Four data types are supported:

- Business Cards
- Calendar Items
- Email Messages
- Notes

Each data type can be saved in any of the supported and installed PIMs.

**NOTE:** PIMs that are not installed on this computer will not appear in the shortcut menus.

When the PIM that is associated with an individual data type is changed on the PIM Item Transfer page, that data type is also changed for the PIM Synchronization service.

### Configure

In addition to the configuration options common to all Bluetooth services, this service also has settings that determine:

- How business card requests are handled. The options are:
  - Never send my business card—ignore the request
  - Choose a business card as needed—when prompted, select a business card to be sent to the requester.
  - Always send the same business card—when a request is received always send the same business card. When this option is selected, a dialog box prompts you to select an installed Personal Information Manager (if more than one is installed on this computer) and an existing business card.
  - Previously sent business cards—once a card is selected using the “Always send the same business card” option, that card will be added to the shortcut menu as an option.

**NOTE:** Previously sent business card additions to the menu are limited to ten, after which the oldest contact will be replaced.

- Where to store inbound data items, on an individual basis. Options include (not all options apply to all items):
  - Do Not Accept
  - Any of the installed PIMs on this computer
  - Save to Folder
- The Bluetooth Exchange Folder location—the directory on this computer where inbound items that are not to be saved in a PIM will be kept.

---

**NOTE:** This is also the folder where the File Transfer service stores inbound items. If this folder is reconfigured here, it will also be reconfigured in that service automatically.

- Whether to send/receive attachments with email.

### **Close a PIM Item Transfer connection**

PIM Item Transfer connections close automatically when the data transfer is complete.

### **Default Business Card Selection**

When the “Always send the same business card” option is selected, a dialog box prompts you to select a default business card.

The first time the dialog box is displayed it provides a way to choose the Personal Information Manager that stores the default business card. Click the down-arrow in the PIM shortcut menu and select the PIM to be used.

On subsequent appearances of this dialog box, the PIM selection option is not available.

### **Change the selected PIM**

On the PIM Item Transfer properties page, “Received items” section, there is a Business Cards shortcut menu. When a PIM was selected during initial setup the selected item in this menu was set to the same PIM. To change the PIM used for the default business card, open this shortcut menu and select a new PIM.

**NOTE:** A new default business card must be selected from the database of the newly selected PIM.

### **Choose a default business card**

1. In the Select a Bluetooth Business Card dialog box that is displayed when “Always send the same business card” is selected, select the card.

**NOTE:** If you mouse over a card that has been selected, a message is displayed with additional information about that contact.

2. Click OK to choose a selected business card and return to the PIM Item Transfer Properties page. The chosen contact is now displayed and selected in the “Business card requests” shortcut menu.

If the “Always send the same business card” option is selected again, and a different contact is chosen, the properties page will display both contacts in the shortcut menu.

**NOTE:** In addition to the default menu options, the shortcut menu can hold up to ten contact names.

## **6.6.11 PIM Synchronization**

The PIM Synchronization service can be used by a remote device to synchronize its Personal Information Manager (PIM) database with the PIM database of this computer.

Four data types are supported:

- Business cards
- Calendar items
- Email messages
- Notes.

Whether an individual item is accepted and where it is stored, when accepted, is configured in the PIM Item Transfer service. If that service is not configured to store a particular data type in Outlook, then that data type cannot be synchronized.

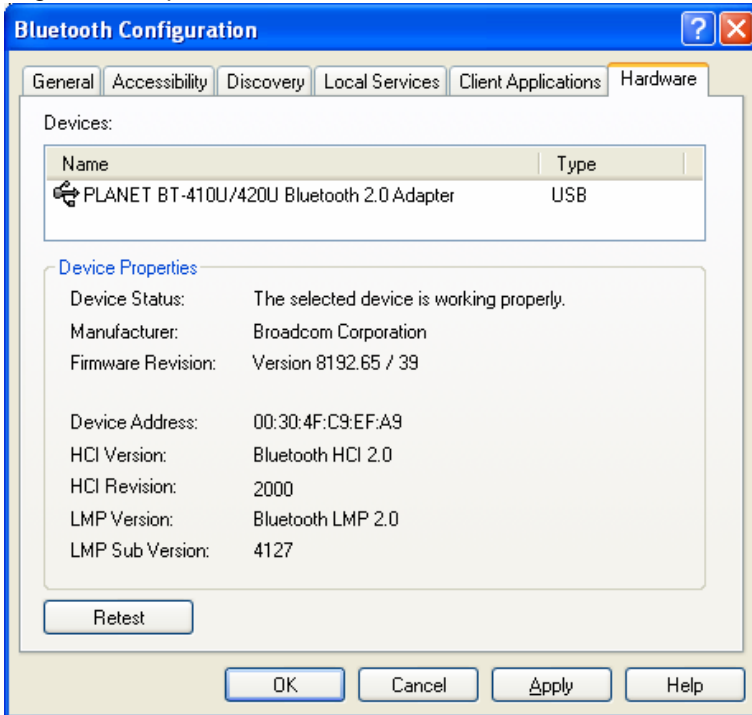
**NOTE:** Data types that will be synchronized must be saved in the PIM database (this is configured in the PIM Item Transfer service); otherwise, that data type will not be available for selection (it will be grayed out) in the PIM Synchronization configuration settings.

Microsoft Outlook permits duplicate entries, so all duplicates may not be exchanged in the synchronization process.

**NOTE:** Only Outlook's default contacts folder is synchronized. Items in sub-folders are not synchronized. Items that are moved from the default folder to a sub-folder will not be displayed the next time synchronization takes place.

## 6.7 Hardware Settings

The Hardware tab of the Bluetooth Configuration Panel provides basic information about the Bluetooth hardware installed on this computer and access to the Advanced Settings dialog box, if required:



- **Devices:**

Name: the name of the device, e.g., My Bluetooth Device

Type: the type of device, e.g., USB.

- **Device Properties:**

Device status: indicates that the device is operating properly or that there is a problem/conflict.

Manufacturer: the name of the company that manufactured the device selected in the Devices section of this dialog box.

Firmware Revision: the manufacturer's firmware version number.

Device Address: the Bluetooth Device Address (BDA or BD\_Addr) assigned to this device when it was manufactured.

HCI Version: the version number of the Bluetooth Specification that the Host Controller Interface complies with.

HCI Revision: the revision number of the Bluetooth Specification that the Host Controller Interface complies with.

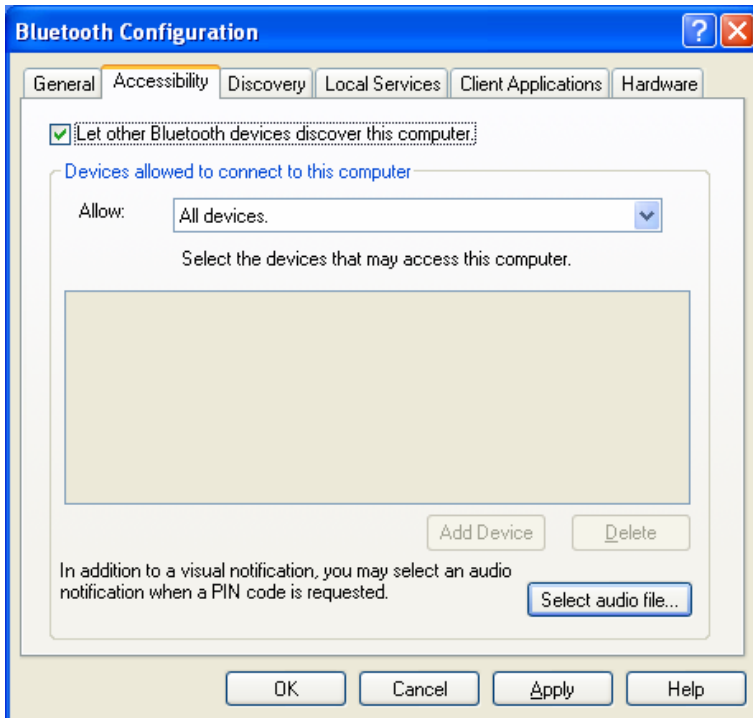
LMP Version: the version number of the Bluetooth Specification that the Link Manager Protocol complies with.

LMP Sub Version: the sub-version number of the Bluetooth Specification that the Link Manager Protocol complies with.

- **Retest Button:** Queries the hardware device selected in “Devices,” and updates the data displayed in “Device Properties.”

## 6.8 Accessibility Settings

The Accessibility tab of the Bluetooth Configuration Panel lets you specify whether remote devices may access this computer, which remote devices have access, and whether an audio warning is played when a Personal Identification Number (PIN code) is required.



### Allow other devices to discover this computer

Select “Let other Bluetooth devices discover this computer” to permit remote Bluetooth devices to find and report this computer.

If “Allow No devices” (below) is selected, this option is not available.

### Control the types of devices that are allowed to connect to this computer

From the “Devices allowed to connect to this computer” shortcut-menu, select:

- **No devices**—no remote devices are permitted to initiate a connection with this computer. However, this computer can still initiate connections with remote Bluetooth devices.
- **All devices**—all remote devices are permitted to connect to this computer. Connections are subject to additional security restrictions, such as authentication and authorization, which may be required by the individual services provided by this computer.
- **Only paired devices**—only devices that have been paired with this computer are allowed to connect to it.
- **Only devices listed below**—only the listed devices are allowed to connect to this computer (see Accessibility, adding and deleting devices).

### Choose an audio notification file

When Secure Connection is enabled for any of the Bluetooth Services on this computer a PIN code is required before that service can be accessed. To choose a notification sound that will play when a remote device attempts to access a service that requires a secure connection, click Select audio file... and select the sound (\*.wav) file to be played.

### Limit access to this computer to specific remote devices

From the Bluetooth Configuration Panel, Accessibility tab, in the Allow shortcut menu, select "Only devices listed below".

### Add a device to the list

1. Click Add Device
2. In the Devices with access... dialog box select the desired devices, and then click OK.

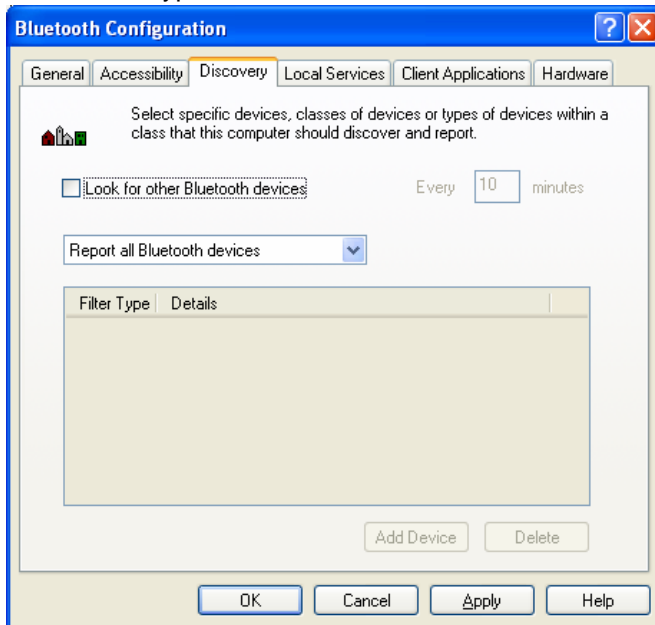
**NOTE:** Multiple devices may be selected using SHIFT + click and/or CTRL + click.

### Delete a device from the list

In the list of devices allowed to access this computer, select the device to be removed from the list, and then click Delete.

## 6.9 Discovery Settings

The settings on the Discovery tab of the Bluetooth Configuration Panel determine whether this computer looks for other Bluetooth devices automatically, how often it looks for devices, and what type of devices it looks for.



### Periodic Search for Devices

When "Look for other Bluetooth devices" is selected, Bluetooth automatically searches for devices every X minutes. X is a whole number between 1 and 60. To change the time between automatic inquiries, highlight the existing time and enter the new time.

**NOTE:** When My Bluetooth Places is first opened, it performs an initial automatic search for devices even if "Look for other Bluetooth devices" is not enabled.

### Determine the devices that will be reported

Bluetooth can screen out devices that you do not need access to. The options are:

- 
- Report all Bluetooth devices
  - Report only selected Bluetooth devices (see Discovery, Adding Specific Devices and Discovery, Deleting Specific Devices).

Select the preferred option from the drop-down list.

### **Discover Specific Devices**

The type of devices that this computer looks for and reports when it is searching for other Bluetooth devices can be limited.

### **Limit the remote devices reported**

Bluetooth can report only specific devices, specific classes of device, or specific types of device within a class.

- Specific devices: an individual computer or Bluetooth cellular telephone are examples of specific devices.
- Specific class of device: “computer” is an example of a class of devices
- Specific type of device within a class: “laptop” is an example of a specific type of device within the “computer” class of devices.

The devices to be discovered can be mixed and matched; you can discover one or more specific devices, classes of devices and types of devices within a class at the same time.

### **Remove a device from the list of devices to be discovered**

In the Bluetooth Configuration Panel, from the Discovery tab, select the device to be removed and click the Delete button.

**NOTE:** If “Report only selected Bluetooth devices” is not selected, the Delete button will not be available.

### **Temporarily override the discovery of specific devices**

In the Bluetooth Configuration Panel, from the Discovery tab, select “Report all Bluetooth devices.” The specifically selected devices will be discovered along with all other devices.

To re-enable specific device discovery re-select “Report only selected Bluetooth devices.”

**NOTE:** When all devices are deleted, an error message will appear if “Report all Bluetooth devices” is not selected.



# Chapter 7

## Security



### 7.1 Authentication

Authentication is used to verify identity; it requires a passkey or link key from the remote device. When a remote device attempts access, a visual and/or audio warning notifies the local operator.

If the notification is ignored, access is denied after a preset timeout.

When devices are “paired,” those devices automatically exchange a link key and Authentication is carried out without operator intervention.

### 7.2 Authorization

Authorization is Yes-or-No security that requires operator intervention to avoid having the connection time out and fail. Authorization is enabled automatically when Secure Connection is enabled, but it can be turned off on a service-by-service basis for each remote device.

Authorization is limited to:

- **Yes**, you may connect (click the balloon to proceed)
- **No**, you may not connect (ignore the balloon prompt and the connection will fail).

### 7.3 Bluetooth Device Identity

Every Bluetooth device has a unique Bluetooth Device Address (BDA) assigned to it during the manufacturing process. This address cannot be changed.

The BDA is usually displayed in hexadecimal format; 00:30:4F:03:2E:9F is a valid BDA.

Each Bluetooth device also has a configurable, user-friendly name to help distinguish it from other devices. The user-friendly name may be up to 99 alphanumeric characters in length and may contain spaces. **My Personal Computer** is a valid user-friendly name.

### 7.4 Encryption

Encrypting data translates it into an unreadable format using a secret key or password. Decrypting the data requires the same key or password that was used to encrypt it.

### 7.5 Link Key

A link key is a unique, internally generated, access code based on a passkey, the Bluetooth Device Address and an internally generated random number. Link keys are generated automatically when devices are paired.

After a link key is generated, manual entry of the passkey is not required.

---

## 7.6 Pairing Devices

Pairing allows you to avoid entering access information each time a connection is attempted. Paired devices share a unique link key, which they exchange each time they connect.

**NOTE:** The mate of a pair is always displayed in My Bluetooth Places, even if the mate is not turned on or is out of connection range.

### Paired devices remain paired even when

- One of the devices is not on
- A service connection is interrupted or the service stopped
- One or both devices are rebooted.

### To Pair with another device

If Secure Connection is enabled, devices will pair automatically the first time they connect (a passkey must be successfully exchanged).

#### To pair with a device manually:

In the Folders pane of My Bluetooth Places, right-click a device, select Pair Device from the shortcut menu, and then follow the on-screen instructions.

### To Remove Pairing

In the Folders pane of My Bluetooth Places, right-click a paired device and select Unpair Device from the shortcut menu.

## 7.7 Passkey

An alphanumeric string up to 16 characters in length. Passkeys are also called Personal Identification Numbers, or PIN codes.

A passkey may be required if the Secure Connection option is enabled for a Bluetooth service or application.

## 7.8 Secure Connection

A passkey or link key is required each time a connection is attempted.

All data exchanged over the Bluetooth connection is encrypted.

Authorization is also enabled by default when Secure Connection is enabled but Authorization can be disabled on a service-by-service basis for each remote device that is permitted to connect to this computer.

## 7.8 Security Request Dialog Box

A Bluetooth passkey request and/or Bluetooth Authorization request balloon may appear over the Windows system tray when a connection is attempted if Secure Connection is enabled.

Click the balloon to proceed.



## Appendix A

# Trouble Shooting

### **Q1: CANNOT CONNECT TO A PAIRED DEVICE:**

A1: Paired devices are always displayed in My Bluetooth Places, even if the remote device is out of range or not powered up.

Verify that the remote member of the pair is within radio range and powered up and then attempt the connection again.

### **Q2: CANNOT DISCOVER SERVICES ON AN UN-PAIRED REMOTE DEVICE:**

A2: The remote device may not be powered up or may be out of range.

- Verify that the remote device is powered up.
- Verify that the remote device is in Connectable mode (Bluetooth Configuration Panel > Accessibility tab).
- Perform a Search for Devices to verify that the device is within range.

### **Q3: DIAL-UP NETWORKING SERVICE DOES NOT START:**

A3: The Dial-up Networking service will not start unless a properly configured modem is attached to the server.

- Verify that the modem is usable as a local device from the server.
- In the Bluetooth Configuration Panel, Local Services tab, double-click the Dialup Networking service:
  - ✓ Click the down arrow in the Modem field and select the modem that will be used to dial out.
  - ✓ Click the OK button.
  - ✓ Click the OK button to close the Bluetooth Configuration Panel.

### **Q4: HOW DO I DETERMINE THE BLUETOOTH DEVICE ADDRESS (BDA) OF MY HARDWARE DEVICE?**

A4: In the Bluetooth Configuration Panel, on the Hardware tab, in the Devices section, select the device you want to determine the address of. In the Device Properties section of the dialog box, the fourth entry, Device Address, is the BDA of the selected Bluetooth.

### **Q5: HOW DO I DETERMINE THE VERSION NUMBER OF THE BLUETOOTH SPECIFICATION THAT THE HOST CONTROLLER INTERFACE (HCI) COMPLIES WITH?**

A5: In the Bluetooth Configuration Panel, on the Hardware tab, in the Device Properties section, the fifth entry provides Bluetooth Specification compliance information for the Host Controller Interface.

The sixth entry contains the Specification Revision information for the Host Controller Interface, if appropriate.

---

**Q6: HOW DO I DETERMINE THE VERSION NUMBER OF THE LINK MANAGER PROTOCOL (LMP)?**

A6: In the Bluetooth Configuration Panel, on the Hardware tab, in the Device Properties section, the seventh entry provides Link Manager Protocol version number information.

The eighth entry contains the Link Manager Protocol sub-version number information, if appropriate.

**Q7: HOW DO I FIND INFORMATION ABOUT THE BLUETOOTH HARDWARE ATTACHED TO MY COMPUTER?**

A7: In the Bluetooth Configuration Panel, select the Hardware tab

**Q8: INTERNET CONNECTION SHARING DOES NOT WORK:**

A8: This occurs because Internet Connection Sharing was enabled when Bluetooth was installed (this is a Microsoft Windows behavior and is considered proper operation).

To enable Internet Connection Sharing:

1. Disable Sharing for the Ethernet adapter:
  - a) Windows Control Panel > Network and Dial-up Connections
  - b) Right-click "Local Area Connection," select Properties, and then select the Sharing tab.
  - c) Clear the check box for "Enable Internet Connection Sharing for this connection," and then click OK.
2. Re-enable Sharing for the Ethernet adapter; repeat Step 1.c.), and select (check) the sharing box.

If you are prompted to select an adapter, select "Bluetooth network adapter." (This option is not displayed unless more than one adapter is available.)

If asked to restart the computer, do so.

**Q9: HOW DO I TEST A NETWORK ACCESS CONNECTION?**

A9: If the client is hardwired to the LAN, unplug the hardwired connection to ensure that the test checks the wireless connection rather than the hardwired connection.

If the server has access to the Internet, open a browser on the client and connect to the World Wide Web.

You may also Ping the server from the DOS prompt.

**Q10: WHY DO I GET AN UNKNOWN PORT MESSAGE WHEN I ATTEMPT TO USE A BLUETOOTH SERIAL PORT?**

A10: The "Unknown Port" error message usually means an attempt was made to connect a port that was in use.

Additional Bluetooth Serial Ports can be added if they are required.

**Q11: BLUETOOTH HEADSET DOES NOT ALWAYS FUNCTION UNDER WIN98:**

A11: Windows 98 cannot convert audio files with the extension m3u (e.g., myfile.m3u) into the Pulse Code Modulation (PCM) audio format used by Bluetooth headsets; this is a limitation of Windows 98.

Other versions of Windows (2000, ME and XP) can translate m3u audio files into the PCM format.

Possible solutions are:

- Upgrade to a newer version of Windows
- Use an m3u-to-mp3 conversion utility to convert the file(s) into a format that is supported by Windows 98. (Conversion utilities are available as freeware or shareware on the Internet.)

# Appendix B

## Specification



Model	BT-410U	BT-420U
Bluetooth Spec. Compliance	Bluetooth V2.0+EDR	
Transfer rates (Max)	Max UART baud rates of 3Mbps	
Operating Voltage	+5V	
USB Standard	USB 2.0	
Operating Distance	100 m in free space	10 m in free space
Antenna	2dBi PCB Antenna	0 dBi printing Antenna
Dimension	49.36 (L) x 17.99(W) x 7.55(H) mm	
Power Consumption	TX → 120mA RX → 58mA Stand By → 50mA	TX → 60mA RX → 58mA Stand By → 30mA
Environment	Operation temperature: 0 ~ 60 Degree C Storage temperature: -10 ~ 70 Degree C Humidity: 5 ~ 90% non-condensing	
<b>Radio</b>		
Spread Spectrum	Frequency Hopping Spread Spectrum (FHSS)	
Frequency Range	2402~2483.5MHz	
RF Channels	79	
Polarization	Omni-directional	
Modulation	GFSK for 1Mbps, 1/4-DQPSK for 2Mbps, 8-DPSK for 3Mbps	
Output Power	13.35dBm	1.74dBm
Receiver Sensitivity	<-82dBm at < 0.1% BER	<-82dBm at < 0.1% BER
<b>Base Band</b>		
Physical Links	Support of ACL link with data rate up to 3Mbps	
	Support of SCO link	
Network Capabilities	Support of piconet point-to-point and point-to-multipoint connections	

## Free Manuals Download Website

<http://myh66.com>

<http://usermanuals.us>

<http://www.somanuals.com>

<http://www.4manuals.cc>

<http://www.manual-lib.com>

<http://www.404manual.com>

<http://www.luxmanual.com>

<http://aubethermostatmanual.com>

Golf course search by state

<http://golfingnear.com>

Email search by domain

<http://emailbydomain.com>

Auto manuals search

<http://auto.somanuals.com>

TV manuals search

<http://tv.somanuals.com>