



Digital Media Center

DMA-200

User's manual

Version 1.0.0

Copyright

Copyright© 2008 by PLANET Technology Corp. All rights reserved. No part of this publication may be reproduced, transmitted, transcribed, stored in a retrieval system, or translated into any language or computer language, in any form or by any means, electronic, mechanical, magnetic, optical, chemical, manual or otherwise, without the prior written permission of PLANET.

PLANET makes no representations or warranties, either expressed or implied, with respect to the contents hereof and specifically disclaims any warranties, merchantability or fitness for any particular purpose. Any software described in this manual is sold or licensed "as is". Should the programs prove defective following their purchase, the buyer (and not this company, its distributor, or its dealer) assumes the entire cost of all necessary servicing, repair, and any incidental or consequential damages resulting from any defect in the software. Further, this company reserves the right to revise this publication and to make changes from time to time in the contents hereof without obligation to notify any person of such revision or changes.

All brand and product names mentioned in this manual are trademarks and/or registered trademarks of their respective holders.

Federal Communication Commission Interference Statement

This equipment has been tested and found to comply with the limits for a Class B digital device, pursuant to Part 15 of FCC Rules. These limits are designed to provide reasonable protection against harmful interference in a residential installation. This equipment generates, uses, and can radiate radio frequency energy and, if not installed and used in accordance with the instructions, may cause harmful interference to radio communications. However, there is no guarantee that interference will not occur in a particular installation. If this equipment does cause harmful interference to radio or television reception, which can be determined by turning the equipment off and on, the user is encouraged to try to correct the interference by one or more of the following measures:

1. Reorient or relocate the receiving antenna.
2. Increase the separation between the equipment and receiver.
3. Connect the equipment into an outlet on a circuit different from that to which the receiver is connected.
4. Consult the dealer or an experienced radio technician for help.

FCC Caution

To assure continued compliance (example-use only shielded interface cables when connecting to computer or peripheral devices). Any changes or modifications not expressly approved by the party responsible for compliance could void the user's authority to operate the equipment.

This device complies with Part 15 of the FCC Rules. Operation is subject to the following two conditions: (1) This device may not cause harmful interference, and (2) this Device must accept any interference received, including interference that may cause undesired operation.

Federal Communication Commission (FCC) Radiation Exposure Statement

This equipment complies with FCC radiation exposure set forth for an uncontrolled environment. In order to avoid the possibility of exceeding the FCC radio frequency exposure limits, human proximity to the antenna shall not be less than 20 cm (8 inches) during normal operation.

R&TTE Compliance Statement

This equipment complies with all the requirements of DIRECTIVE 1999/5/EC OF THE EUROPEAN PARLIAMENT AND THE COUNCIL OF 9 March 1999 on radio equipment and telecommunication terminal Equipment and the mutual recognition of their conformity (R&TTE)

The R&TTE Directive repeals and replaces in the directive 98/13/EEC (Telecommunications Terminal Equipment and Satellite Earth Station Equipment) As of April 8, 2000.

WEEE Regulation



To avoid the potential effects on the environment and human health as a result of the presence of hazardous substances in electrical and electronic equipment, end users of electrical and electronic equipment should understand the meaning of the crossed-out wheeled bin symbol. Do not dispose of WEEE as unsorted municipal waste and have to collect such WEEE separately.

Safety

This equipment is designed with the utmost care for the safety of those who install and use it. However, special attention must be paid to the dangers of electric shock and static electricity when working with electrical equipment. All

guidelines of this and of the computer manufacture must therefore be allowed at all times to ensure the safe use of the equipment.

Revision

User's Manual for Digital Media Center

Model: DMA-200

Rev: 1.0 (Sep. 2008)

Part No. EM-DMA-200v1

Table of Contents

1. INTRODUCTION.....	7
1.1 Feature	7
1.2 Package Contents.....	8
1.3 Physical Details.....	9
2. INSTALLATION.....	14
2.1 System Requirement.....	14
2.2 Getting Start.....	14
2.2.1 Wired Network Setup	21
2.2.2 Using the Digital Media Sever (DMS)	22
2.3 Configuring the DMS.....	23
2.4 Advanced Network Setup.....	24
2.4.1 Connect Digital Media Center to PC directly	24
2.4.1.1 Disable Firewall under Windows Vista.....	25
3. THE DIGITAL MEDIA SERVER (DMS)	31
3.1 Media List Tab.....	31
3.2 Importing Media	32
3.3 System Tab	34
3.4 Options Tab.....	35
3.4.1 Play Multimedia Files.....	36
3.4.1.1 Music.....	36
3.4.1.2 Photos	43
3.4.1.3 Video.....	50
3.5 Internet Media.....	60
3.5.1 Play Internet Radio – Live 365 TM	60
3.5.2 Play Internet Radio – My Radio	63
3.5.3 Play Internet Video – My Video.....	65
3.5.4 Viewing “Youtube” Content	66
3.5.5 Add/Delete the Internet Radio/TV Stations Lists.....	69
3.6 Firmware Upgrade and Reset to Default.....	71
3.6.1 Upgrade by Direct Internet Access.....	71
3.6.2 Upgrade by Using USB Flash Stick	71
3.6.3 Reset to Default	72
3.7 Miscellaneous Settings.....	73

3.7.1 System Setup	73
3.7.1.1 Language	74
3.7.1.2 TV Mode Setup	75
3.7.1.3 Audio Setup	76
3.7.1.4 Video Setup	76
3.7.1.5 Other Settings	77
3.8 FAQ	78
Appendix A	81

1. Introduction

The PLANET Digital Media Center, DMA-200 is advanced customer premises equipment (CPE) device for delivering streaming audio, video, and data directly from network or Internet on consumers' TV sets and/or Home Entertainment systems. If you have already set up your local area network or connected to Internet, you can huddle on the sofa using supplied remote control to search and enjoy your favorite pictures, movies, or surf webs., so you don't always have to be seated next to your computer or Home Entertainment systems. Besides connecting your PC with the network, you can simply plug in your USB devices to access and play the media files via user-friendly On-Screen Display (OSD) menu.

In order to close your need and customize a unique viewing experience for you, we provide the collective web-browser to let you enjoy more Internet entertainment. Default web-browser page designs many links (appears as buttons or thumbnail) that include UGC (User Generated Contents) website, and you can choose these links directly to view amazing variety of internet video contents.

With the fascinating features, the DMA-200 provides advanced MPEG1/2/4 video and MP3 audio compression algorithms and can deliver content streams with optimal quality over networks with limited bandwidth, the PLANET DMA-200 provides an immersive way of managing and interacting with your entertainment library. Explore your complete digital collections of music, photos, and videos in a single window; the DMA-200 is a powerful Digital Media Center that supports Standard and High Definition (HD) video, audio/video playback, web browsing and a myriad of media applications.

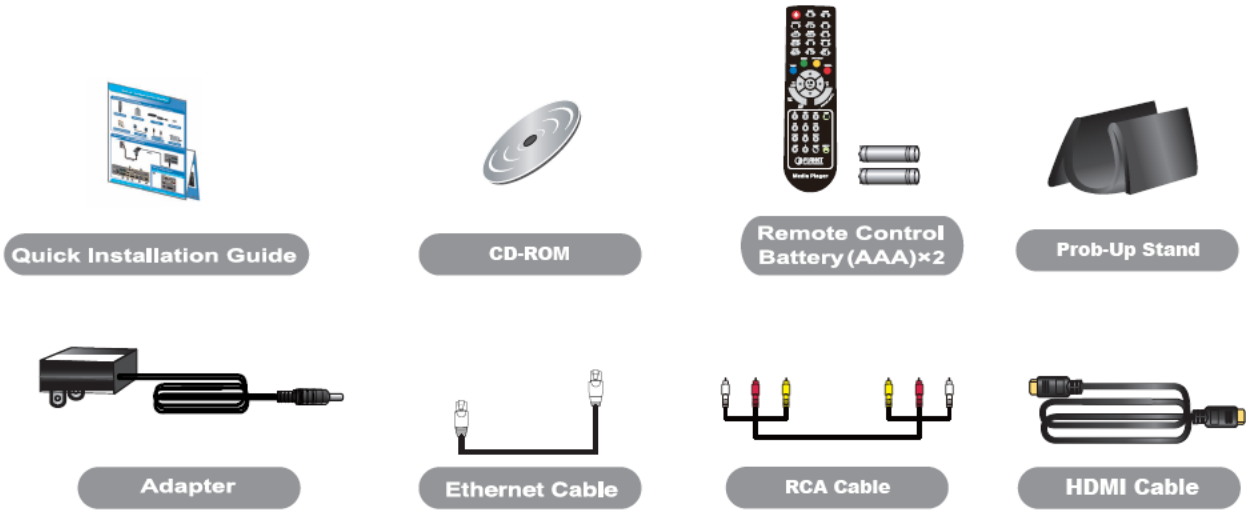
1.1 Feature

- Stream media contents from a PC or digital device to your entertainment center.
- Instant access video, music, and photo on USB devices via a built-in USB 2.0 connector.
- Listen to digital music on your stereo system.
- View digital photo, slideshow, and video on TV.

- Enjoy superior video quality provided by the progressive scan MPEG 1/2/4 contents.
- UPnP AV and DLNA compliant for maximum compatibility.
- Sleek design complements your existed audio/video equipment.
- Built in coaxial digital audio output.
- Built in Composite / S-Video / Component video output.
- Throughput up to 10/100/1000 Mbps linked with Ethernet network cable.
- Support DHCP and Auto IP for easily connects to your home networking.
- Provide one-touch color coded shortcut buttons remote controller for quick access to music, photo, video, and online media content.
- Quick access to your media contents via the remote controlled TV interface.
- Support Internet radio (Live 365, vTuner, etc.)
- Support media playlist.
- Multiple Media Formats Support.
- Favorite Web TV / Photo / Radio Station Galley.
- Network Setup Wizard for Wired Easy Setup.
- Surfing Internet on TV Simply.
- Support Bit Torrent Downloading.

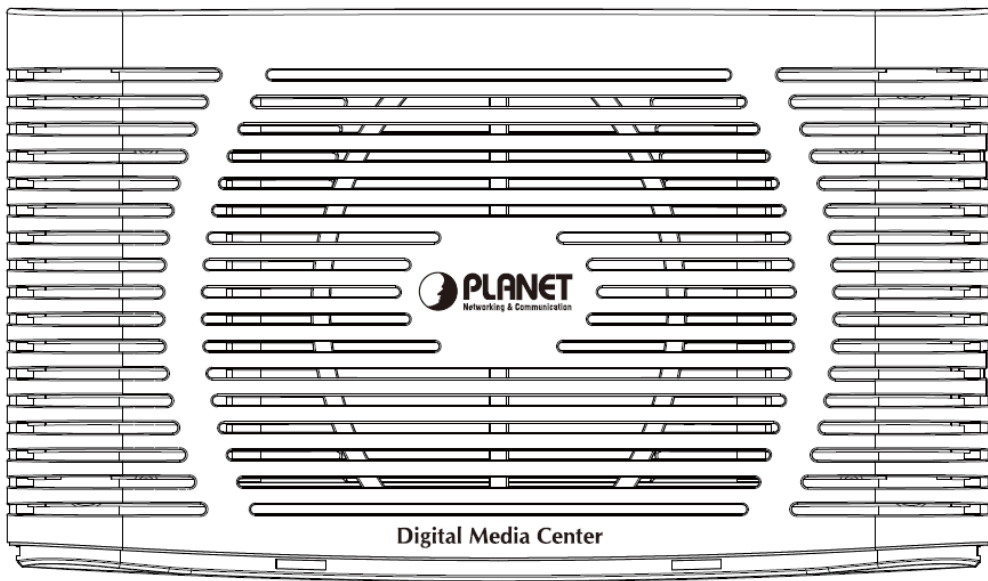
1.2 Package Contents

- ◆ DMA-200 Unit x 1
- ◆ Remote Controller x 1
- ◆ Power Adapter x 1
- ◆ AV Cable (RCA) x 1
- ◆ RJ-45 Cable (Blue) x 1
- ◆ HDMI Cable (Black) x 1
- ◆ Prob-Up Stand x 1

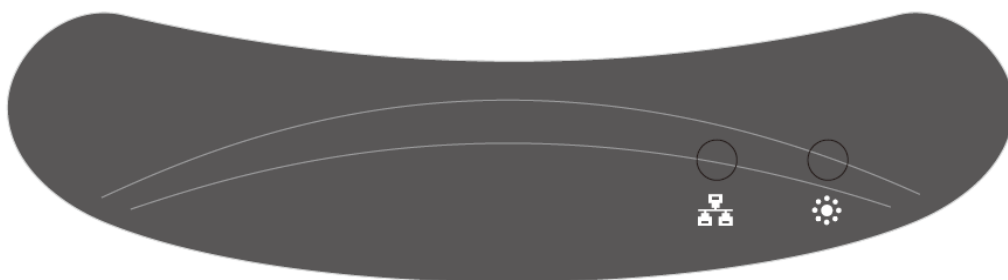


1.3 Physical Details

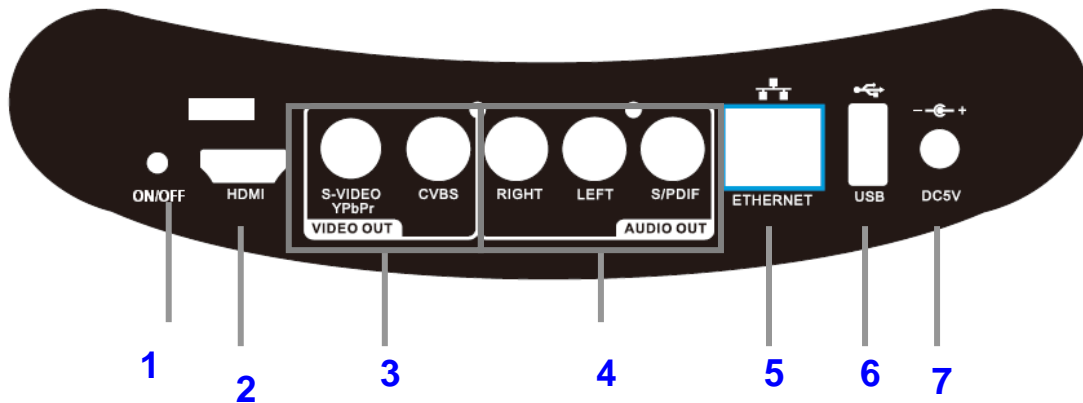
Top Panel



Front Panel



Rear Panel

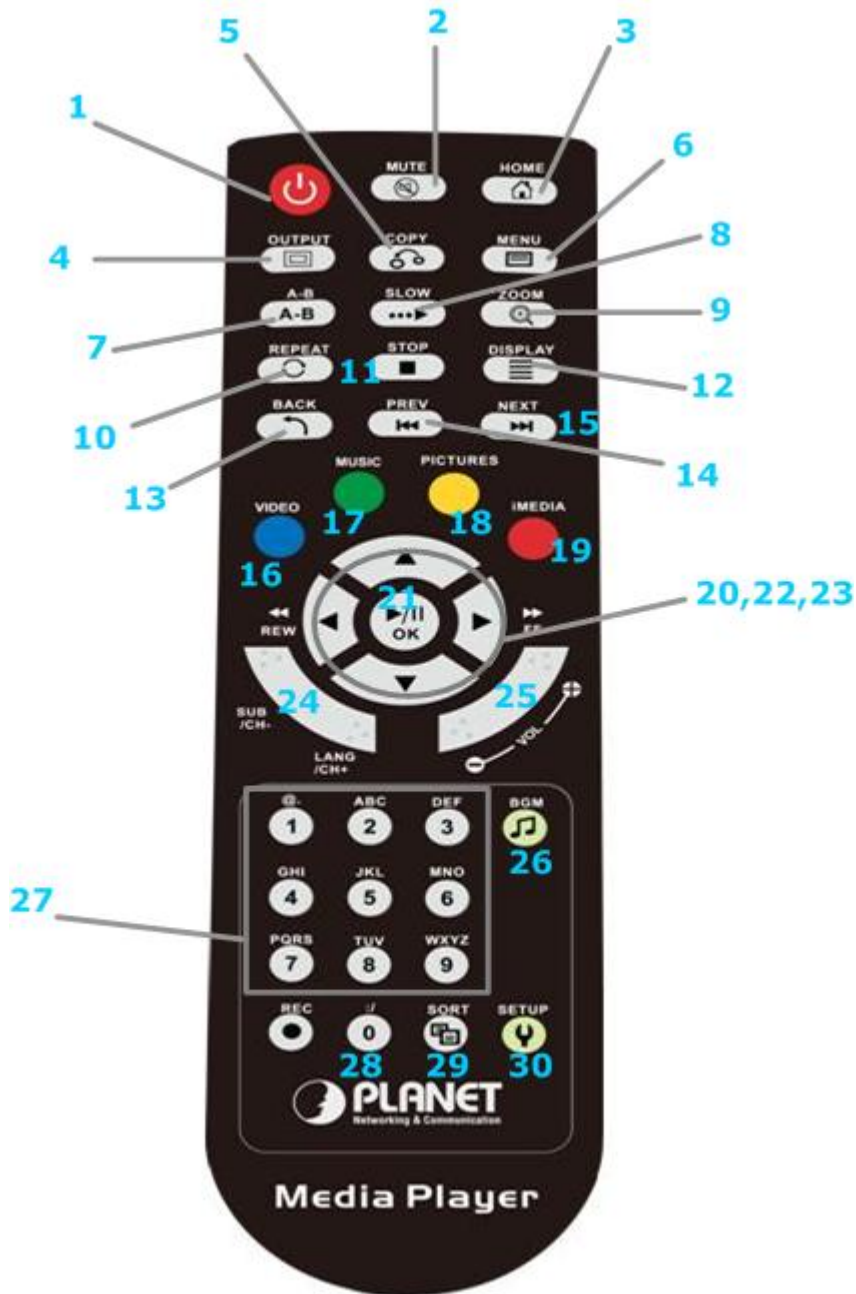


Rear Panel Port and Button Definition

No.	Connector	Description	
1	ON/OFF Button	Power ON / OFF switch	
2	HDMI	Connect to this port cable to HDMI device via HDMI cable.	
3	Video Out	S-Video	Use S-Video cable to connect to " S-Video " port of Video out on the TV sets or Home Entertainment systems in your home.
		CVBS	Use AV cable to connect to " CVBS " port of Video out on the TV sets or Home Entertainment systems in your home.
4	Audio Out	RIGHT	Use AV cable to connect to the " RIGHT " port of Audio Out on the TV sets or Home Entertainment systems in your home.
		LEFT	Use AV cable to connect to " LEFTT " port of Audio Out on the TV sets or Home Entertainment systems in your home.
		S-PDIF	Use AV cable to connect to S-PDIF port of the TV sets or Home Entertainment systems in your home.
5	USB	Connect the supplied USB cable to this port when connecting to the USB devices such as USB storage or USB CD-ROM.	
6	Ethernet	Digital Media Center is successfully connected to a device through the corresponding port. If the LED is	

		flashing, the Digital Media Center is actively sending or receiving data over that port.
7	DC 5V	Power connector with 5V DC 2.6A

Remote Controller



Keypad Definition

No.	Connector	Description
1	POWER	Turn On/Off Digital Media Center.
2	MUTE	Mute audio output.
3	HOME	Hotkey to return to Main Menu.
4	OUTPUT	Switch the video output type with S-Video→ YPbPr→ HDMI sequence.
5	COPY	Copy USB content into USB flash stick or USB external Hard disk drive.
6	MENU	Menu of file management.
7	A-B	Set/Cancel A-B repeat mode (for future implement).
8	SLOW	Slow forward / backward the media with speed 1/2x, 1/4x, 1/8x...
9	ZOOM	Zoom video or photo.
10	REPEAT	1. Video & Music: Repeat current file or Repeat all files in this folder or cancel repeat function. 2. Photo: Repeat Background music.
11	STOP	Stop the media playing.
12	DISPLAY	1. Video: Display media name and media type. 2. Photo: Display media name and resolution.
13	BACK	Press to return to previous folder or setup page.
14	PREV	1. Skip to the previous page when browsing media files. 2. Skip to the previous file when playing media files.
15	NEXT	1. Skip to the next page when browsing media files. 2. Skip to the next file when playing media files.
16	VIDEO	Press to jump to VIDEO mode.
17	MUSIC	Press to jump to MUSIC mode.
18	PICTURES	Press to jump to PHOTO mode.
19	iMEDIA	Press to jump to Internet Media mode.
20	DIRECTIONS (←, ↑, ↓, →)	1. Press " LEFT " to stop current mode return to former layer; Press " RIGHT " to enter a selected folder or server. 2. Video Mode: Press " UP " or " DOWN " to choose other file. 3. Photo Mode: Move picture in " zoom " mode or rotate picture in " rotate " mode. 4. Music Mode: Press " UP " to skip to previous music file or press " DOWN " to skip to next music file.

21	OK/Play Pause	1. Play or pause media files. 2. Enter the highlight item. 3. Photo Mode: Enter " rotate " mode.
22	REWIND	Fast backward the media file with speed 2x, 4x, 8x...
23	FAST FORWARD	Fast forward the media file with speed 2x, 4x, 8x...
24	SUB & LANG	Select different subtitles and languages when playing video file.
25	VOLUME +/-	Increase/Decrease the volume.
26	BGM	1. Add/Remove a music file as background music. 2. Add/Remove a music station from " My Media ".
27	NUMBERS	Input number with the key value.
28	:/	Hotkey for internet radio URL input. (for future implement)
29	SORT	Sorting all the files in one folder and re-arrange in alphabetical order.
30	SETUP	Hotkey to Setup Menu: " UP " & " DOWN " to move cursor. " LEFT " & " RIGHT " to enter or leave page.

2. Installation

This chapter offers information about installing your router. If you are not familiar with the hardware or software parameters presented here, please consult your service provider for the values needed.

2.1 System Requirement

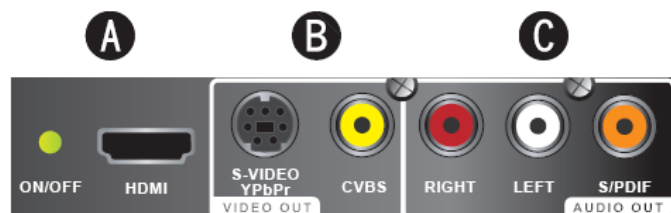
- ◆ 1.8GHz Processor or higher
- ◆ 512MB RAM or above (512MB recommended)
- ◆ HD space at least 1 GB free for installation
- ◆ Microsoft DirectX 9 or above
- ◆ Windows 2000 or above
- ◆ Windows Media Player 9 or above

2.2 Getting Start

This chapter shows you how to configure these steps to connect DMA-200, and the following figure is the Rear Panel of Digital Media Center.

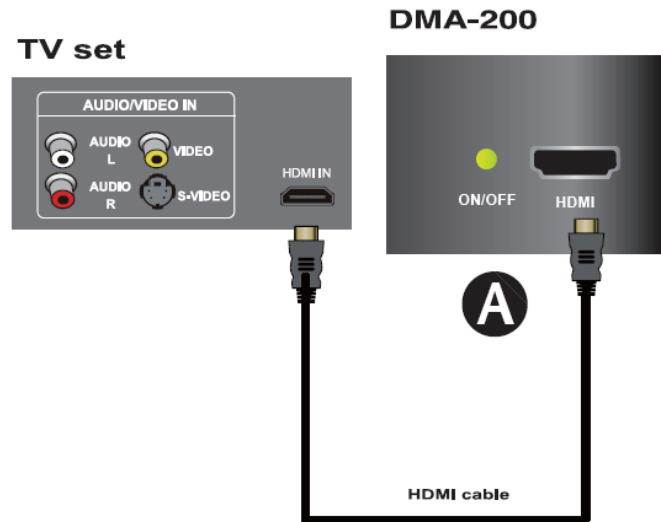


Step1 → To Select Video Output By HDMI , S-Video, or AV Cable



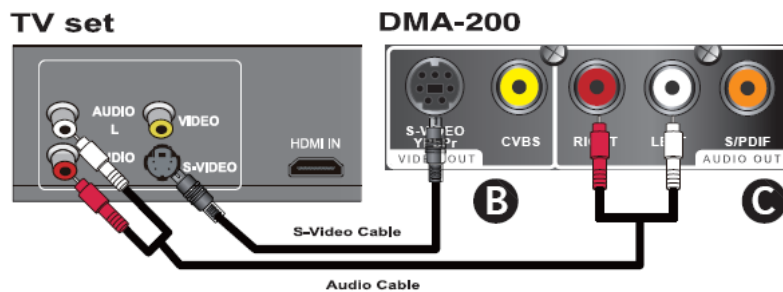
Make sure you have the appropriate cables for connecting. Take care to watch the colors of the plugs on the cable.

1. Connect via HDMI



2. Connect via S-Video or Composite Video Cable (with Audio Cable)

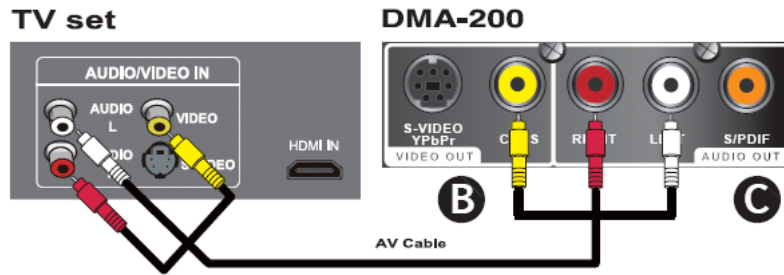
I. Connect via S-Video and Audio



Note

S-Video cable is not bundle in the package

II. Connect via AV Cable



Note

RCA Audio is also available for audio output

III. Connect via S/PDIF cable



The S-Video and Component is in the same port. You need to have a S-Video / Component cable and a S-Video to S-Video cable or a Y-Pbpr to Y-Pbpr cable to connect to your TV port.

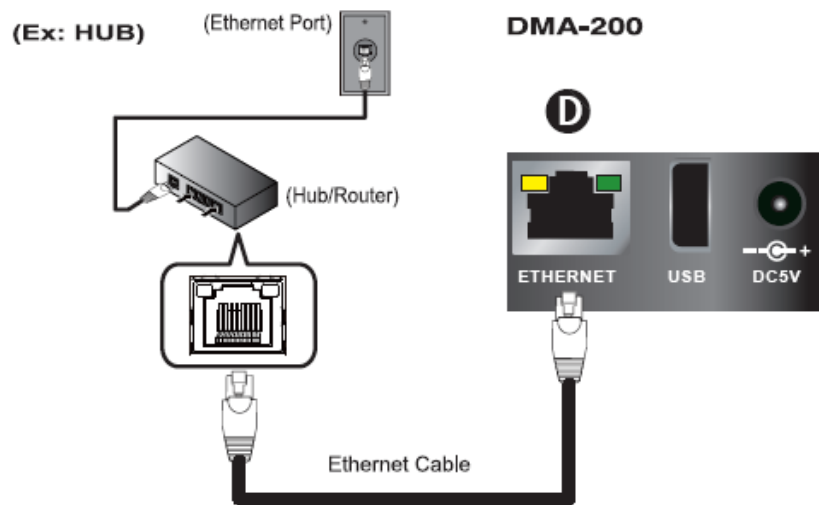
Note

S/PDIF (Sony / Philips Digital Interconnect Format) For connection of this interface, please also check the capability of your audio amplifier.

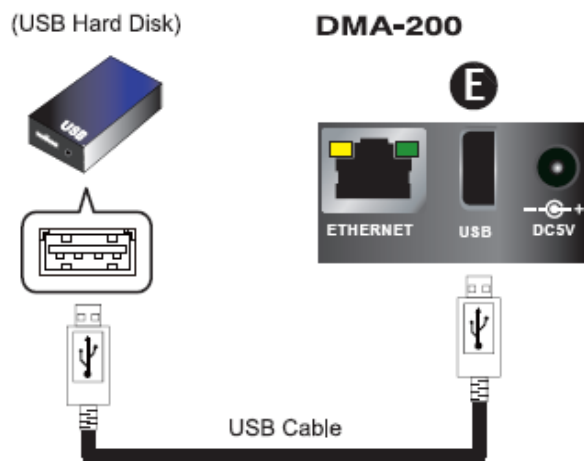
Note

If no sound is heard after connecting the Optical/Coaxial cable, check if you have changed the audio setup of Digital Media Center to Digital mode. Please go to **Setup** → **System Setup** → **Audio Setup** for configuration. By default, audio out of DMA-200 is set as analog RCA output.

Step2 → **Connect Ethernet Connector**



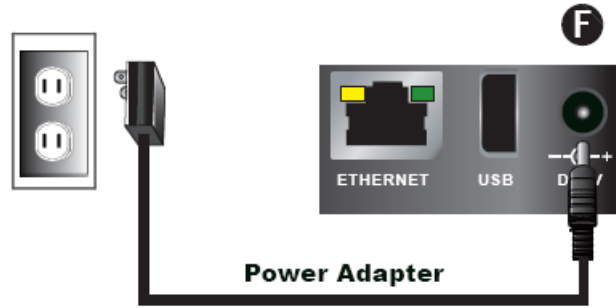
Step3 → Connect USB Devices If Available



EX: USB CD-ROM Drive, USB Hard Disk

Note The USB cable is not bundled in the package

Step4 → Connect Power Adapter

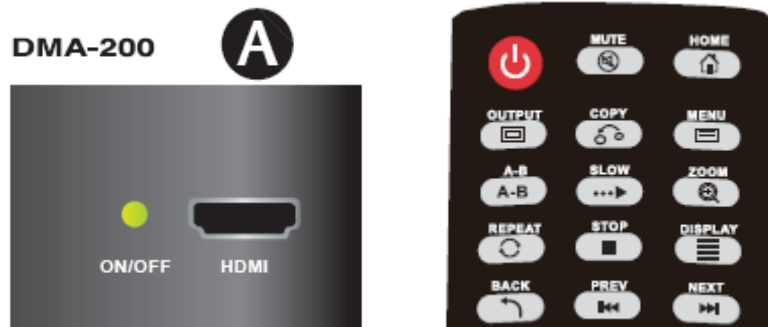


Step5 → Install Batteries in Remote Control



Step6 → Turn On the Digital Media Center

1. When DC power applied, the LED light on with red color in standby mode
2. Press the POWER button on the remote controller or the ON/OFF button of DMA-200, the front power LED light with green color



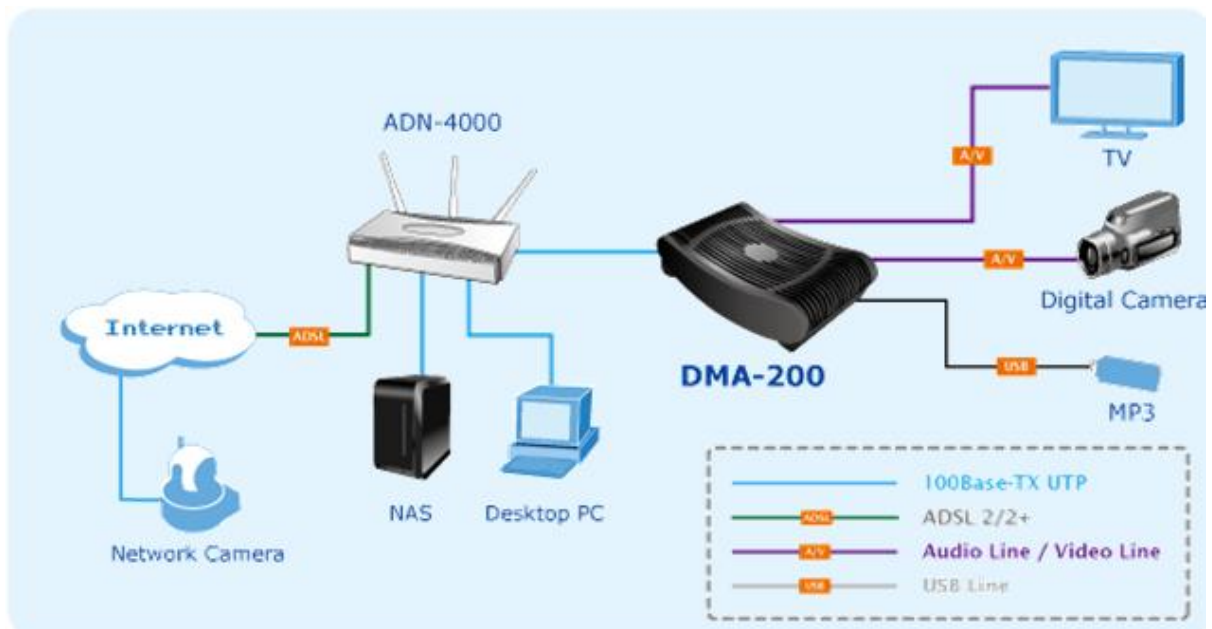


RED LIGHT: Standby

GREEN LIGHT: Power on

Connection Diagram

Following is a connection example with network and UPnP devices.



Configuring the Digital Media Center


Please reference the follow steps to setup the Digital Media Center

Step1 → Turn on the TV. Set the video sources selector on your TV to match the connection from your Digital Media Center.

For example, if you used HDMI, set the TV to use “**HDMI**” Input.

Step2 → Turn on the Digital Media Center. The LED on the front panel of the Digital Media Center lights up to show that it is powered on.

Step3 → Check the TV display. The default display of Digital Media Center is Composite (CVBS). If you use HDMI, aim the remote control at the Digital


Media Center and push "  " Key. You can cycle through the TV modes to get the correct display.

Step4 → Wait few seconds for the startup page to show up, and it will turn into the Main Menu Afterwards.



Step5 → The startup page will last for only few seconds, and then go to a black screen. Please wait few seconds and it will run into the Main Menu. If there is no video output after the startup page appears, please make sure the Digital Media Center and the TV are in the same mode.

If not, please cycle through the "  " key on the remote control, wait few seconds during each cycle.

Note When you cycle through the "  " Key, the Digital Media Center will tell you which mode you are at. Below figure is an example of cycling to "HDMI" mode. Please press "OK" if you want to select to HDMI mode. It will switch to the original mode automatically if idle for 15 seconds.



Step6 → Select Wired Network for Digital Media Center to set up.

2.2.1 Wired Network Setup

Step1 → Press "**SETUP**" hotkey on the remote control or select "**Setup**" mode from The Main Menu.



Step2 → Select "**Network Wizard**" from Setup Main Menu to start the wizard



Step3 → Select "**Wired**" and follow the on screen instructions.



Step4 → Now the setup is complete.

2.2.2 Using the Digital Media Sever (DMS)

To share music, photo and video files from your computer, it is necessary to install the **D**igital **M**edia **S**ever (DMS) on the PC that contains the files you want to share.

Note

Check Appendix A. Specification for the minimal system requirement of DMS.

The DMA-200 can connect to more than one Media Server at a time and scan all the files you want to share in the same local network.

Follow these steps to install the software:

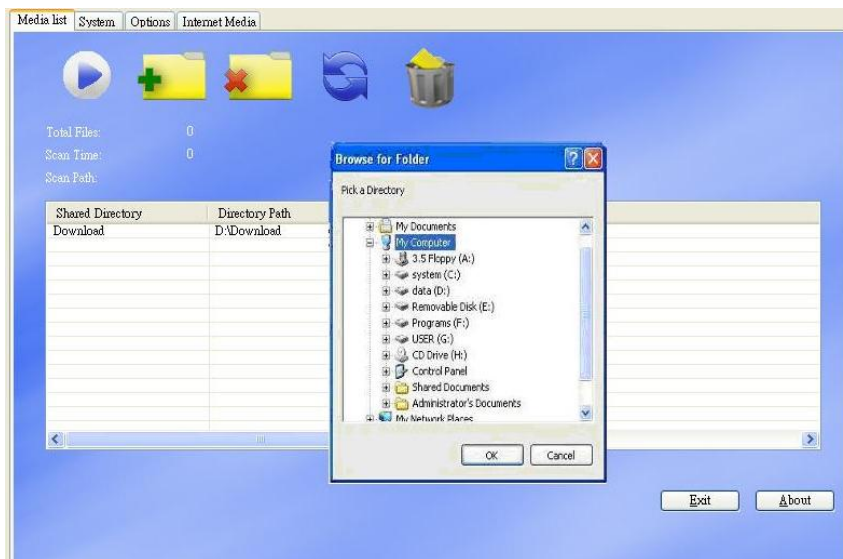
1. Insert the Installer CD into the CD drive on the computer.
2. Select "**Utility**" on the main CD page.
3. Choose language from pop icon.
4. The Install Shield Wizard starts. Follow Install Shield Wizard steps to install the software.
5. After the Install Shield Wizard finish, select **PLANET** → **DMS Server** to begin service.

Note

For more information on DMS Server Software, please see **Chapter 3**.

2.3 Configuring the DMS

1. For the first time of using DMS Server, click "**Add**" button on the screen to add new folder.



2. Select folder you want to share and add to the directories
3. After all are done, click "**Play**" button to begin service.

4. When you are finished, please go to your TV.
5. Your Digital Media Center is ready for using. The Main Menu is displayed.

 **Note**

PLANET will put new version of server on the website (www.planet.com.tw) when it is released, please uninstall the old version of DMS every time before you install a new one.

2.4 Advanced Network Setup

2.4.1 Connect Digital Media Center to PC directly

This Chapter gives you a description on how to connect the Digital Media Center directly to your PC instead of the local area network.

3. Connect the LAN cable to the LAN port of both Digital Media Center and the PC.
4. Go to Digital Media Center, press Setup hotkey or select "**Setup Main Menu**".
5. Follow on screens instructions to complete Wired Network settings.

 **Note**

In this case, use a LAN cross cable type.

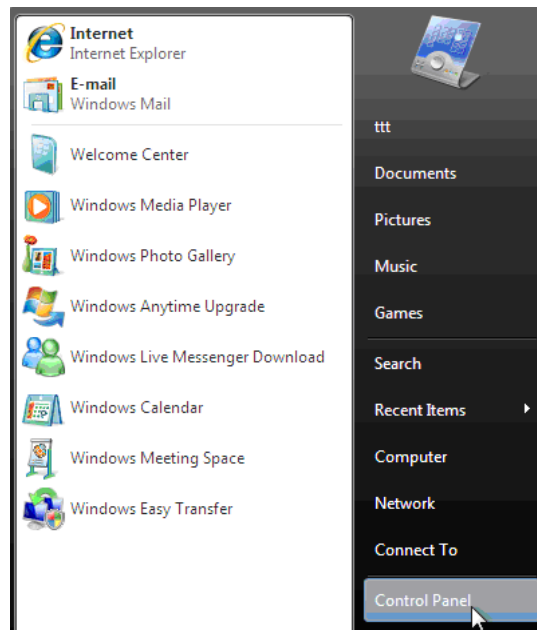
 **Note**

Some firewall and anti-Virus tools will forbid "**UPnP**" protocol. This will affect the connection between "DMS" and Digital Media Center Utility. It is suggested to allow "**DMS**" pass through your firewall or temporarily turn off your firewall when you are using Digital Media Center.

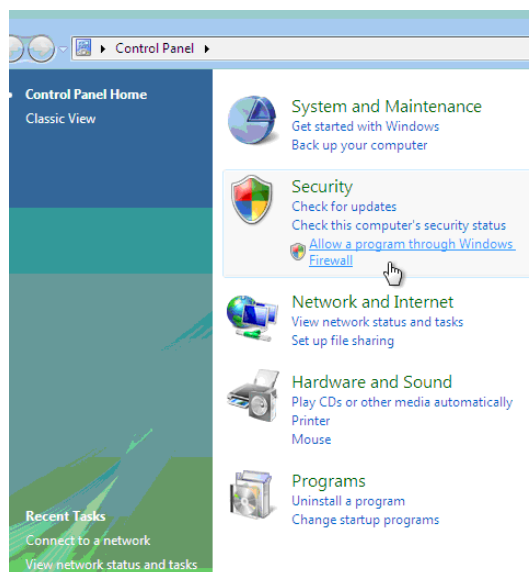
2.4.1.1 Disable Firewall under Windows Vista

Some firewall and anti-Virus tools will forbid “UPnP” protocol. That will affect the connection between “DMS” and Digital Media Center Utility. It is suggested to allow “DMS” pass through your firewall or temporarily turn off your firewall when you are using Digital Media Center. Please reference the follow steps to disable firewall.

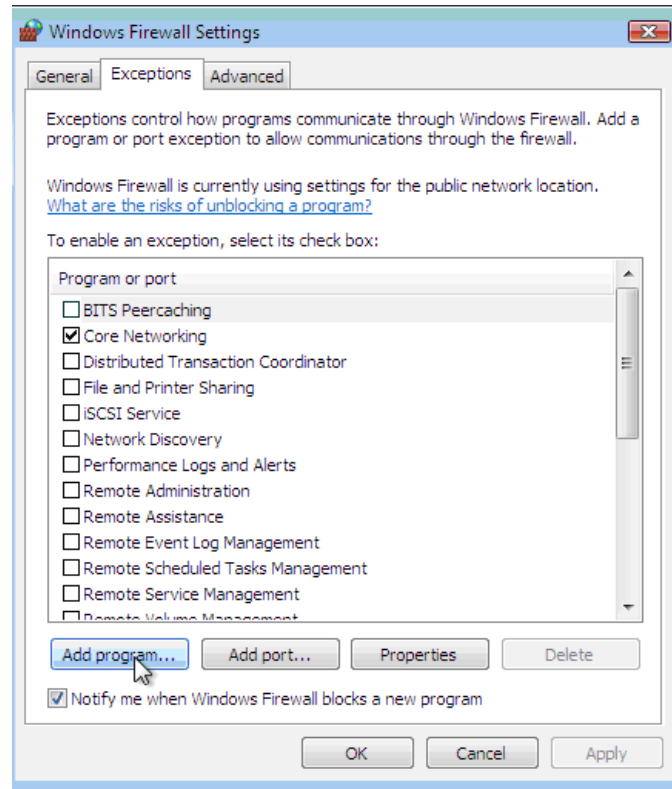
Step1 → Select “Control Panel”



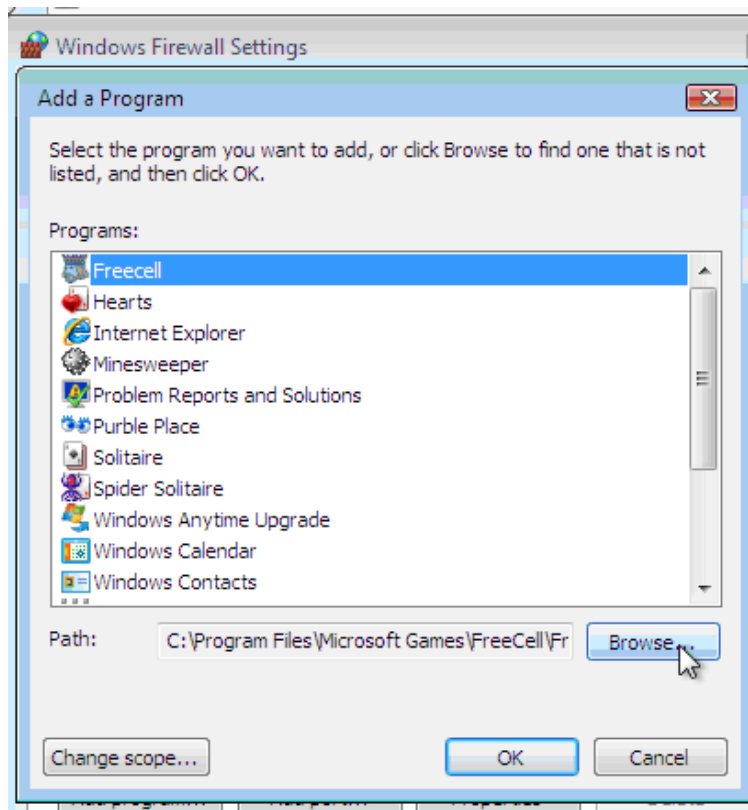
Step2 → Select “Security” and click “Allow a program through Windows firewall”.



Step3 → Choose “**Exceptions**” Tab, and click “**Add program...**”



Step4 → Click “**Browse...**” to browse for DMS program

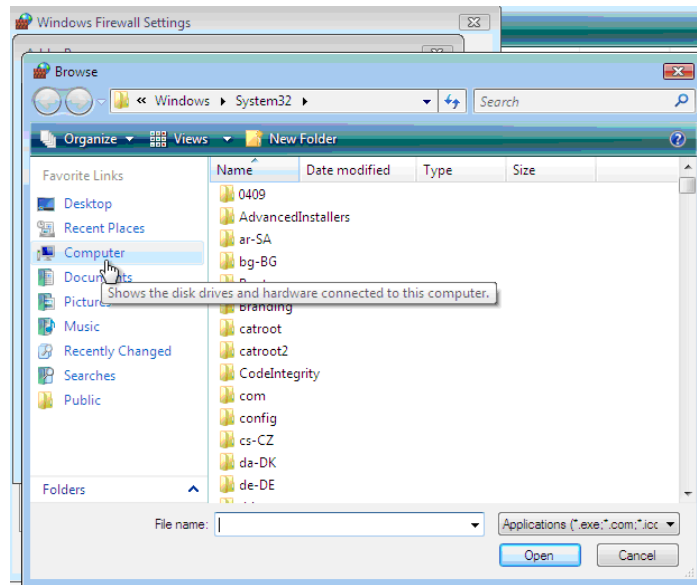


Note

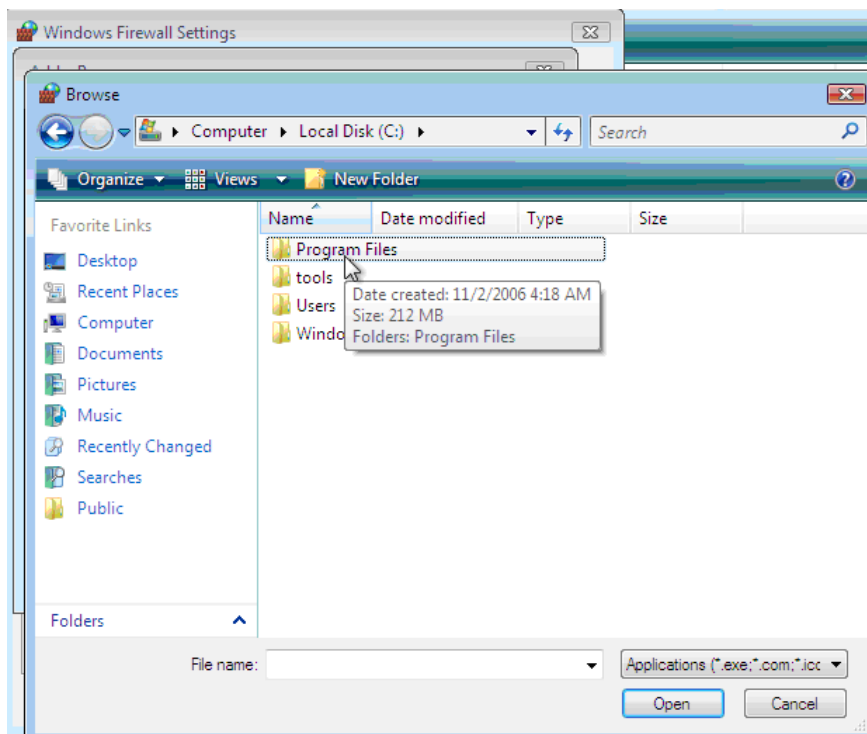
The default PLANET DMS program files path is at **Computer** → **Local Disk (C:)** → **Program Files** → **PLANET Utility**

Follow below step5~8 to search for program files.

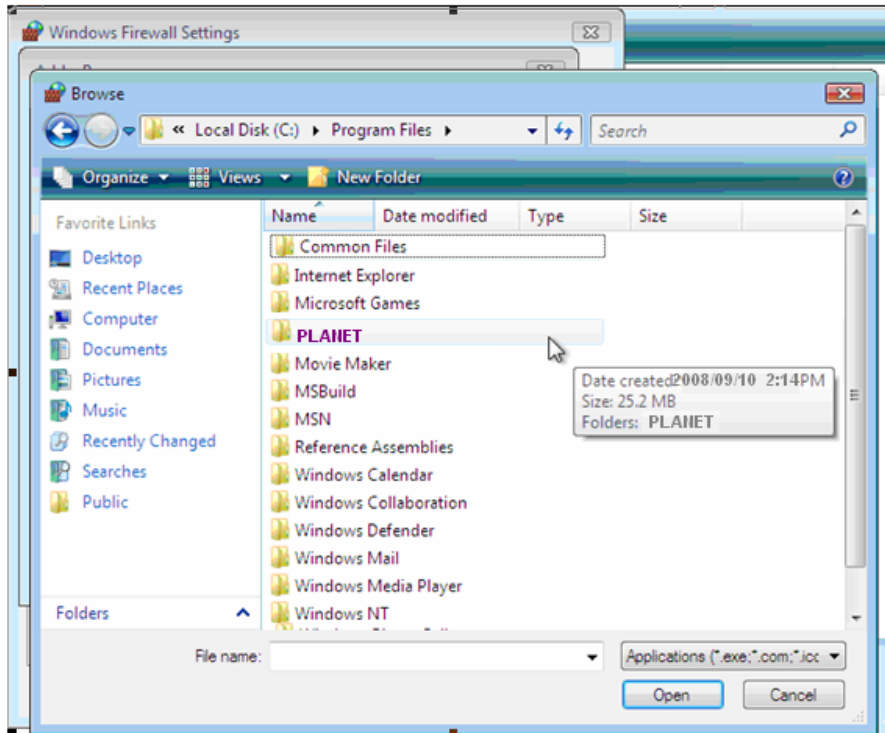
Step5 → Click **“Computer”**.



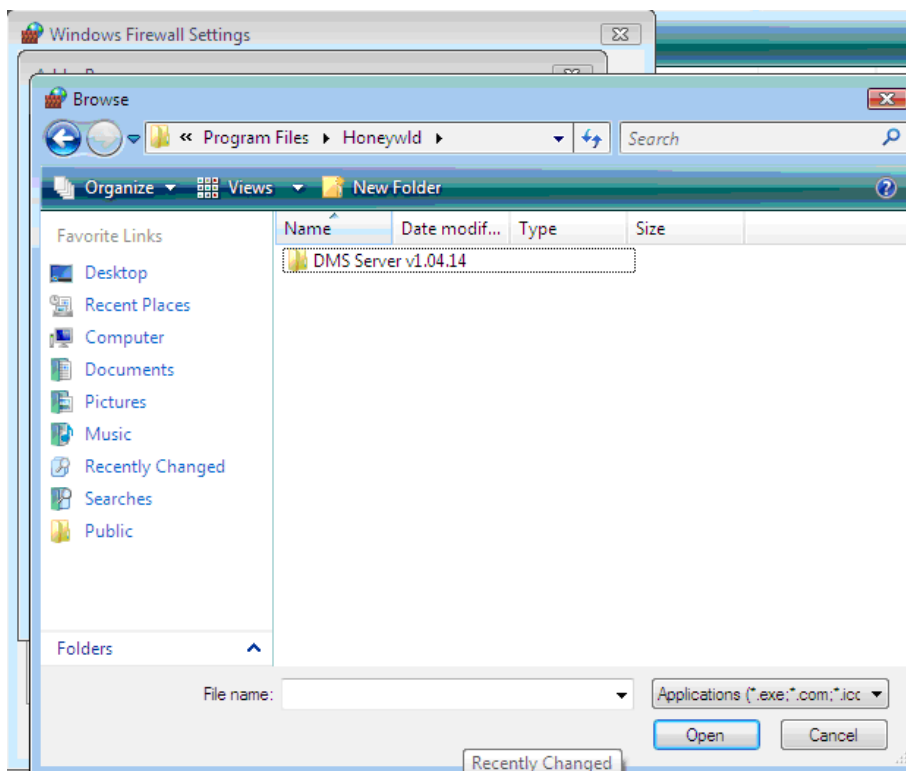
Step6 → Click **“Program files”**



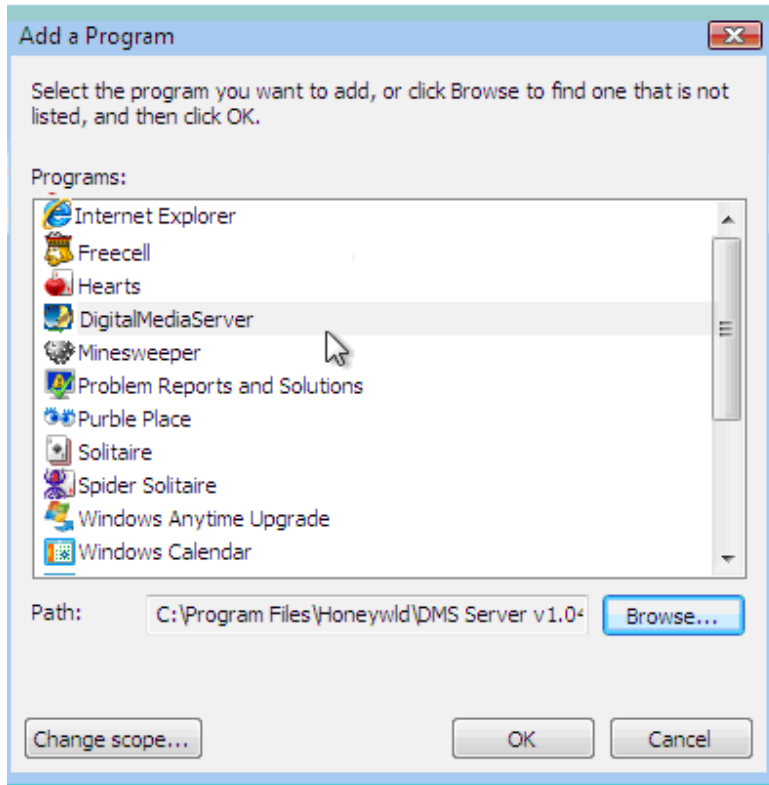
Step7 → Click Folders “**PLANET**”



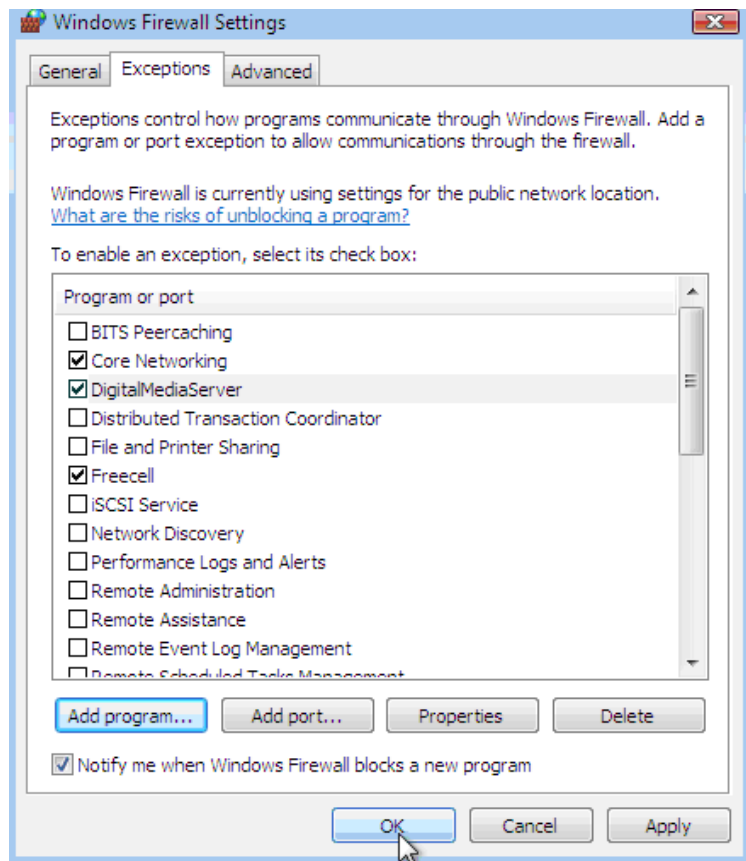
Step8 → Click “**DMS Server v1.04.14**”



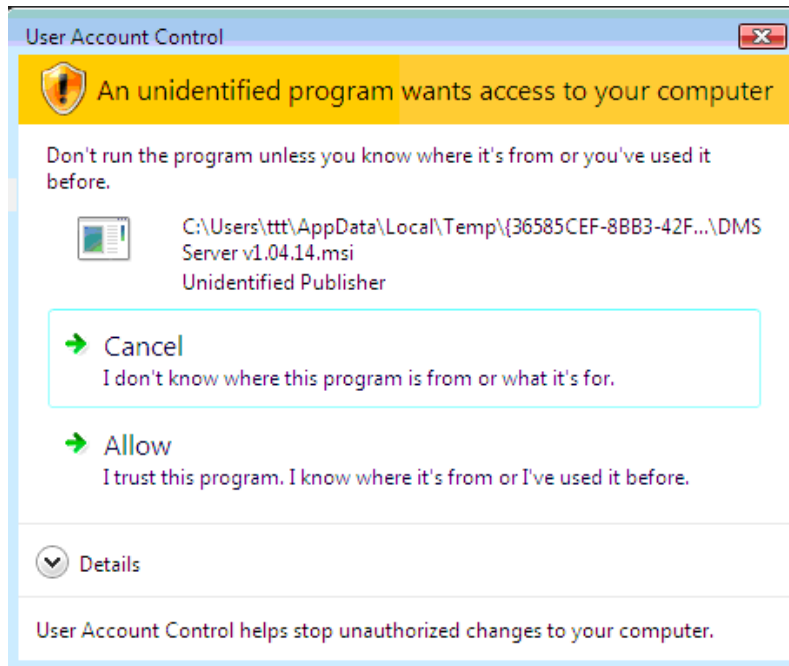
Step9 → Select **“DigitalMediaServer”**



Step10 → DMS Server is successfully included to the exceptions. Click **“OK”** to finish.



Step 11 → Click **“Allow”** to add this program.



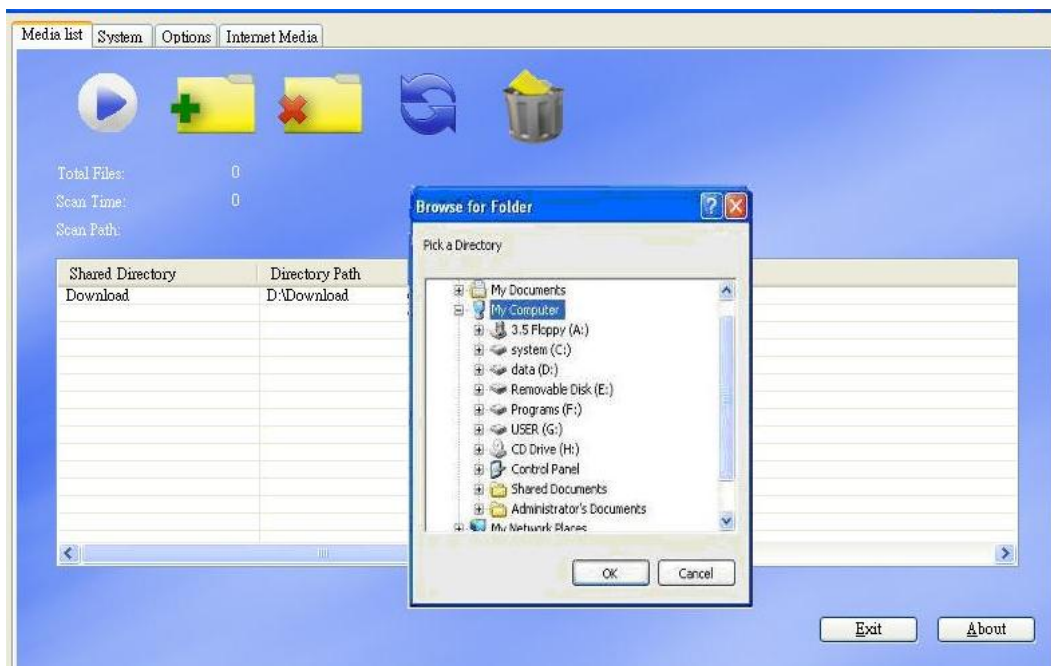
3. The Digital Media Server (DMS)

The Digital Media Server software that runs in a computer on your home network. To play media files on PC, Digital Media Center must be connected to the network, and the Digital Media Server software must be running. Digital Media Server software is easy to install from the Installer CD.

After installation, it can be configured to automatically start when Windows system is up. You may use the Digital Media Server to scan for additional media at any time.

3.1 Media List Tab

The **Media list tab** is where you select the types of files you want to share.

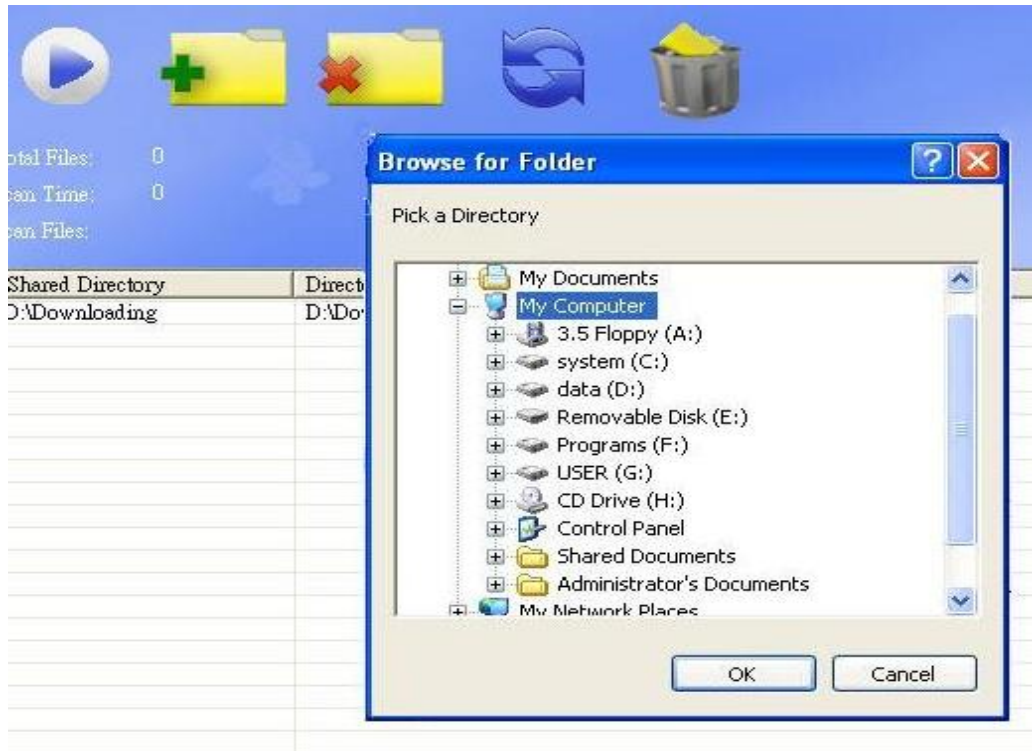


3.2 Importing Media

Please reference the follow steps to import media.



1. Press " " button to invoke the Explore to choose folder.
2. Select the folder you want to share and press "OK" to start the files scanning.



3. The DMS will ignore those none supported files automatically and you can see which folders had been shared from "**Shared Directory**" column.

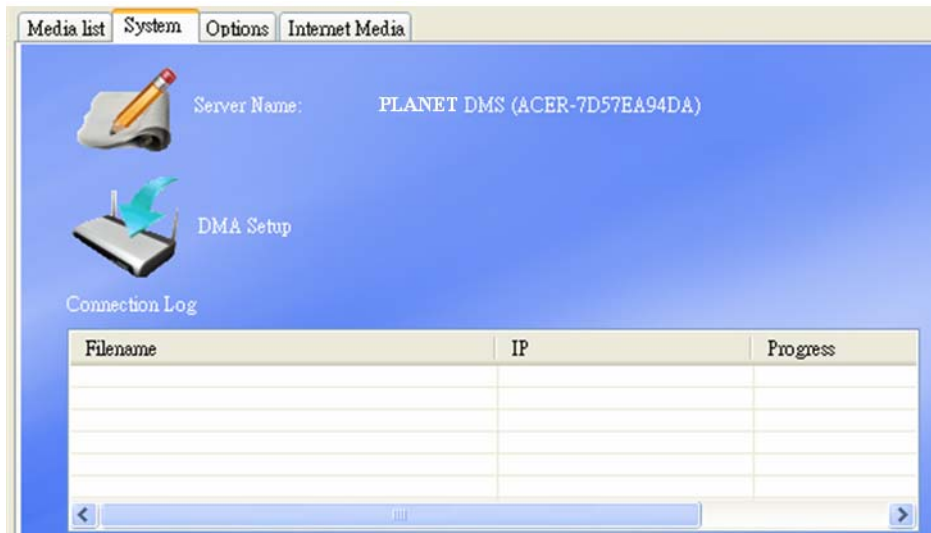
Shared Directory	Directory Path
D:\Downloading	D:\Downloading



4. Press " " button to start the file sharing service, then you can choose this server from Digital Media Player.

3.3 System Tab

The **System Tab** is where you can change the name of your Server Software, delete/add **iMedia** list or browse/delete/add the local USB HDD content

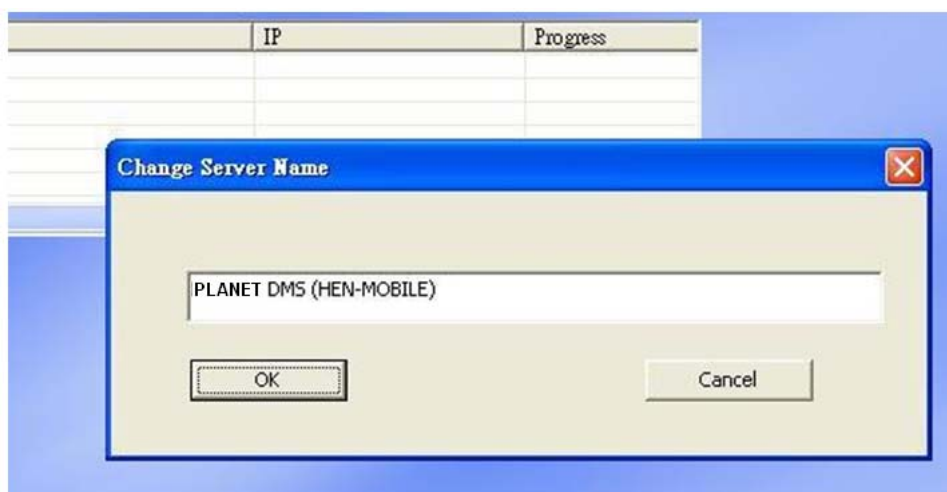


3.3.1 Change the Server Name as you like

Follow below steps to change the desired name.



1. Press " " button then change the desired name.
2. Click "**OK**" to restart service with new server name.



3.3.2 DMA Setup



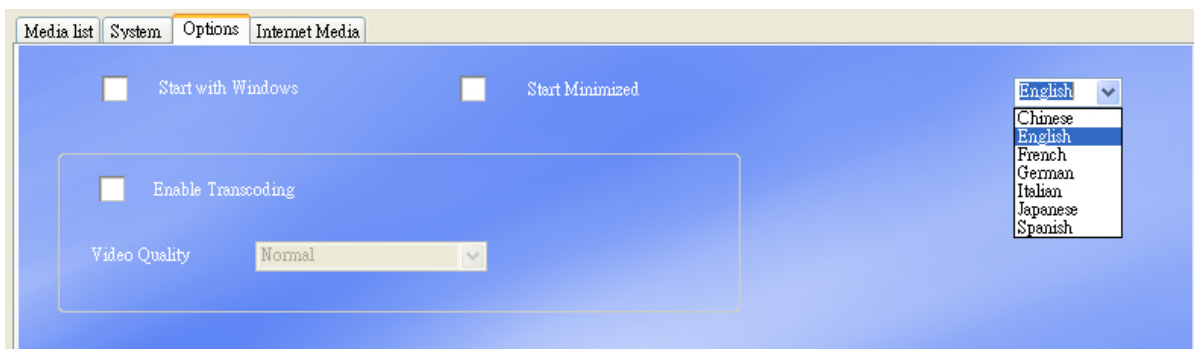
The **DMA Setup** has two major functions. One is to help you to add/delete your favorite Internet Radio/TV lists on **iMedia**. The other is to browse for each local USB HDD contents on the network and to copy/delete its files by using the DMS Software installed on your PC.

Note

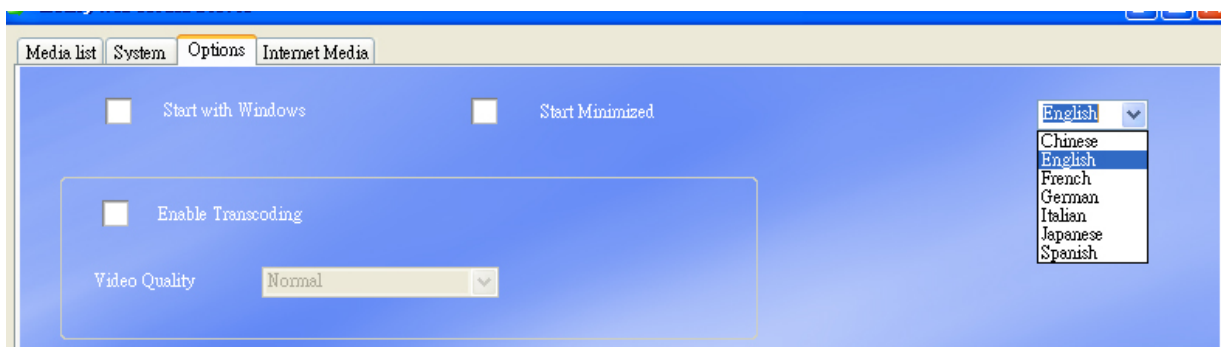
For information on how to manage **iMedia** lists, please see [Chapter 3-5](#).

3.4 Options Tab

The **Options tab** is where you can enable the auto-run or trans-code settings




Please reference the follow steps to configure your settings.




1. Check the "**Enable Auto Run**" box and this Digital Media Server will auto run once the Window system is up.
2. Check the "**Minimized at Startup**" box and this Digital Media Server will minimize to system tray when the program is invoked.



3. Check “**Enable Transcoding**” box and press “” button to enable the Transcoding function. When you want to watch “**MP4**” or “**MOV**” format, enable this function.



4. If service of Digital Media Server is running, please press “” button first to check “**Enable Transcoding**” box.

5. When the “**Transcoding**” function is enabled, please also select the “**Transcoding Quality**” at the bottom column.

3.4.1 Play Multimedia Files

3.4.1.1 Music

◆ Supported Music Format

The following music formats are supported:

Format	File Extension
AAC+	AAC, MP4, M4A
AAC-LC	AAC, MP4, M4A
AC3 / Dolby Digital 5.1 Down mixing	AC3
AC3 Pass through	AC3
DTS Pass through	DTS
LPCM	WAV, PCM
MP3	MP3 (ID3 tag supported)
MP3Pro	MP3
OGG Vorbis	OGG
WMA	WMA, ASF
WMA Lossless	WMA, ASF
WMA Voice	WMA, ASF
WMA Pro	WMA, ASF

◆ To Play Music

1. Select **"My Media"** from Main Menu to enter server list, or press **"Music"** hotkey on remote control.



2. Available file sources will be listed on the server list, including files stored at media server in your PC, at USB flash stick, at USB external Hard disk drive, USB external CD-ROM drive or at other UPnP servers. Please select the media server you want to use and press **"OK"** button on remote control.



Note

When you want to play music on other UPnP Servers, please make sure the UPnP function for each device is enabled correctly.

3. Select MUSIC mode and press "OK" to enter music mode.



4. You select "DMS", the music files will organize by "Album", "Artist", or "Genre" automatically for your convenient; or you can select "All Music" to see all music files.

You may also select "My Folder" to view the music files that organized in several subfolders as on your PC. Please use "Up" and "Down" buttons on the remote control to navigate those folders, and select the option by press "OK" or "Right" button on the remote control.



5. Select the folder that contains the music files or the subfolders you want, and press "OK", "Play", or "Left" button on the remote control to play it.

Note



icon is stand for a folder;



icon is stand for a file.

6. You can get related information about the music you are playing from playing page such like "**Artist**", "**Album**", "**Title**", and "**Genre**".



◆ Controlling Music Playback

Use the remote to **PLAY**, **PAUSE**, or **STOPV** music. Controlling the music playback will be as easy as controlling your TV set.

Play and Pause

Press "**PLAY**" button while music is playing you can pause the music by pressing "**PLAY**" button again can resume the music

Pause Music

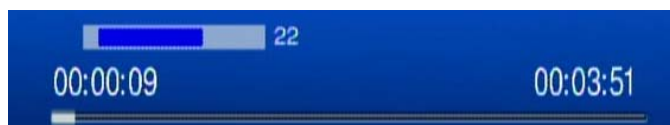


Play Music



Volume Control

Press "**Vol+**" or "**Vol-**" buttons to control the volume



Mute

Press "**Mute**" button to mute or un-mute the music.

mute music



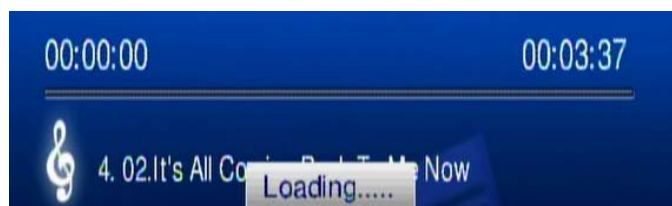
un-mute music



Skip to Next or Previous File

Press "**Next**" or "**Down**" buttons to skip to next music file.

Press "**PREV**" or "**UP**" buttons to skip to previous music file.



Fast Forward

Press ">> (**FF**)" button to fast forward the music file. Press several times to switch the speed.



Rewind

Press "<< (**REW**)" button to fast backward the music file. Press several times to switch the speed.

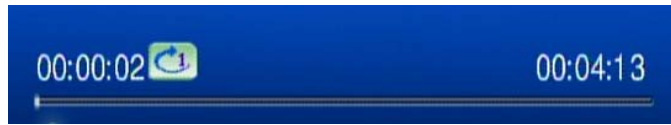


Repeat and Repeat All

You can turn on the repeat function to continuously play individual music or music within a folder.

Repeat Once:

Press "**Repeat**" button once to repeat playing current music file.



Repeat All:

Press "**Repeat**" button twice to repeat all music files in current folder.



Repeat Off:

Press "**Repeat**" button for three times to disable the repeat mode.



◆ Viewing Photos While Music is playing

The Digital Media Center is capable of displaying photos and playing background music simultaneously. Follow below steps to add music to "**BGM**" list.


1. Enter music files list





2. Please use "**Up**" and "**Down**" buttons on the remote control to navigate music

files, and press "**BGM**" hotkey  on remote control to invoke "**BGM**" tool bar.



3. Please use **“Right”** and **“Left”** buttons to select options on **“BGM”** tool bar, and press **“OK”** button on  icon to add current music files to **“BGM”** list.






4. You can also select  icon to add all music files in current folder. The music files that been added to **“BGM”** list will display with  icon.



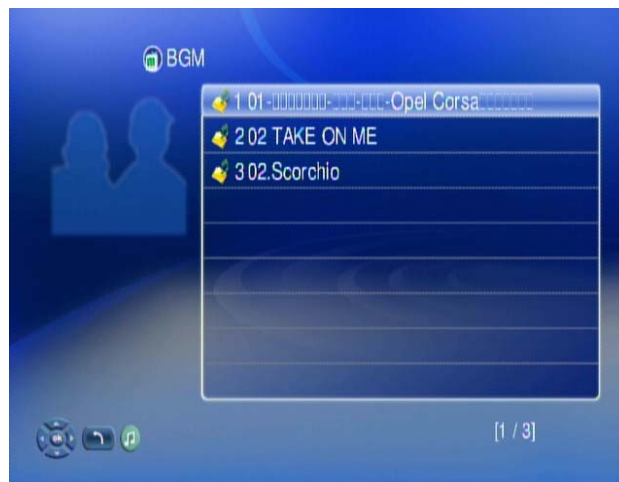
Add music to BGM list



Music added successfully

5. To play BGM files, please select "  " button on "BGM" tool bar; to stop playing BGM, please select "  " button.
6. To remove music files from BGM list, please select "  " icon on the file you want to remove; or select "  " to remove all files from BGM list.
7. To check the "BGM" list, please select "  " icon to view all music files in the list.

BGM music is playing



3.4.1.2 Photos

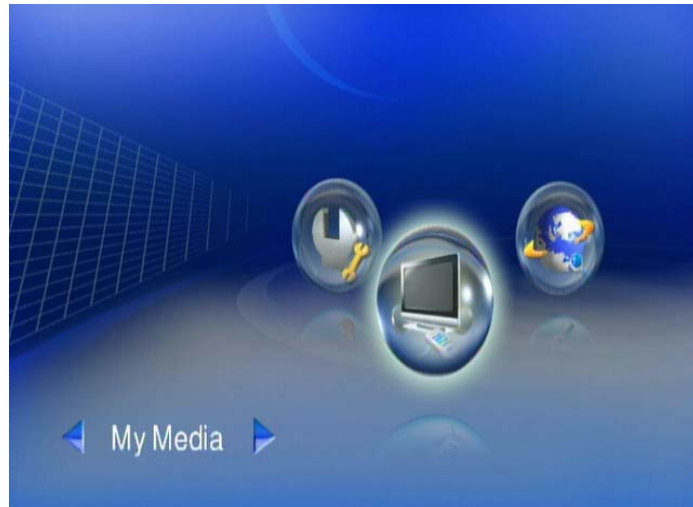
◆ Supported Photo Format

The following photo formats are supported:

Format	File Extension
BMP	BMP
EXIF SUPPORT	JPEG, JPEG, JPE, TIFF, TIF
GIF	GIF
JPEG	JPEG, JPG
JPEG2000	JPG, JPEG, JPE
PNG	PNG
TIFF	TIFF, TIF
Windows Media Photo	WDP, HDP

◆ To Play Photos

1. Select **"My Media"** from Main Menu to enter server list, or press **"PHOTO"** hotkey on remote control.



2. All available file sources will be listed on the server list, including files stored at media server in your PC, at USB flash stick, at USB external Hard disk drive, USB external CD-ROM drive or at other UPnP servers. Please select the media server you want to use and press **"OK"** button on remote control.



3. Select "**PHOTO**" mode and press "**OK**", or press "**PHOTO**" hotkey to enter photo mode.



4. If you select "**DMS**", you may select "**My Folders**" to view the image files that organized in several subfolders as on your PC, or select "**All Images**" to see all shared image files. Please use "**Up**" and "**Down**" buttons on the remote control to navigate those folders, and select the option by press "**OK**" or "**Right**" button on the remote control.



5. Select the folder that contains the image files or the subfolders you want, and press "**OK**", or "**Left**" button on the remote control to play it.



Note



icon is stand for a folder;



icon is stand for a file.

◆ **Playing a Photo Slideshow**

To start playing a photo slideshow, navigate to the first photo of each folder and



press the button on the remote control. The first photo will be displayed and then followed by the next photo in the folder. All photos in the folder will be displayed.

◆ **Controlling Photo Playback**

Play, Pause and Stop

Press "**PLAY**" button on the image files list to enable slideshow playing. Press "**STOP**" button to stop it.



Skip to Next or Previous File

Press "**Next**" or "**Down**" buttons to skip to next video file.

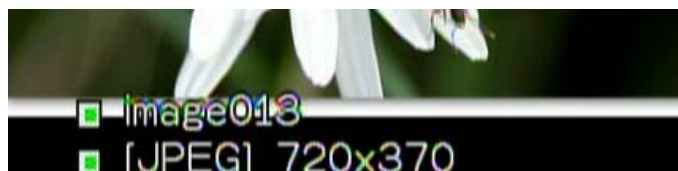


Press "**PREV**" or "**UP**" buttons to skip to previous music file.



◆ Viewing Photo Information

Press "**Info**" button to get image information.



◆ Photo Viewing Effect

Zoom in and Zoom Out

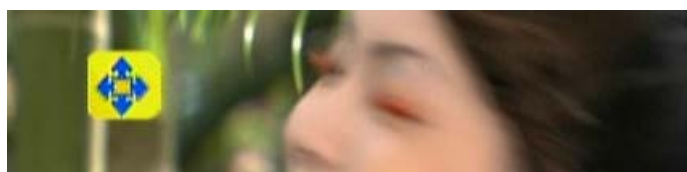


Press "Zoom" button while viewing the photo that you want to manipulate,

1. Press "**Zoom**" button and press "**Left**" button to enlarge the image.



2. When the image screen is larger than TV screen, press "**Zoom**" again and press "**directions**" buttons to move the image.

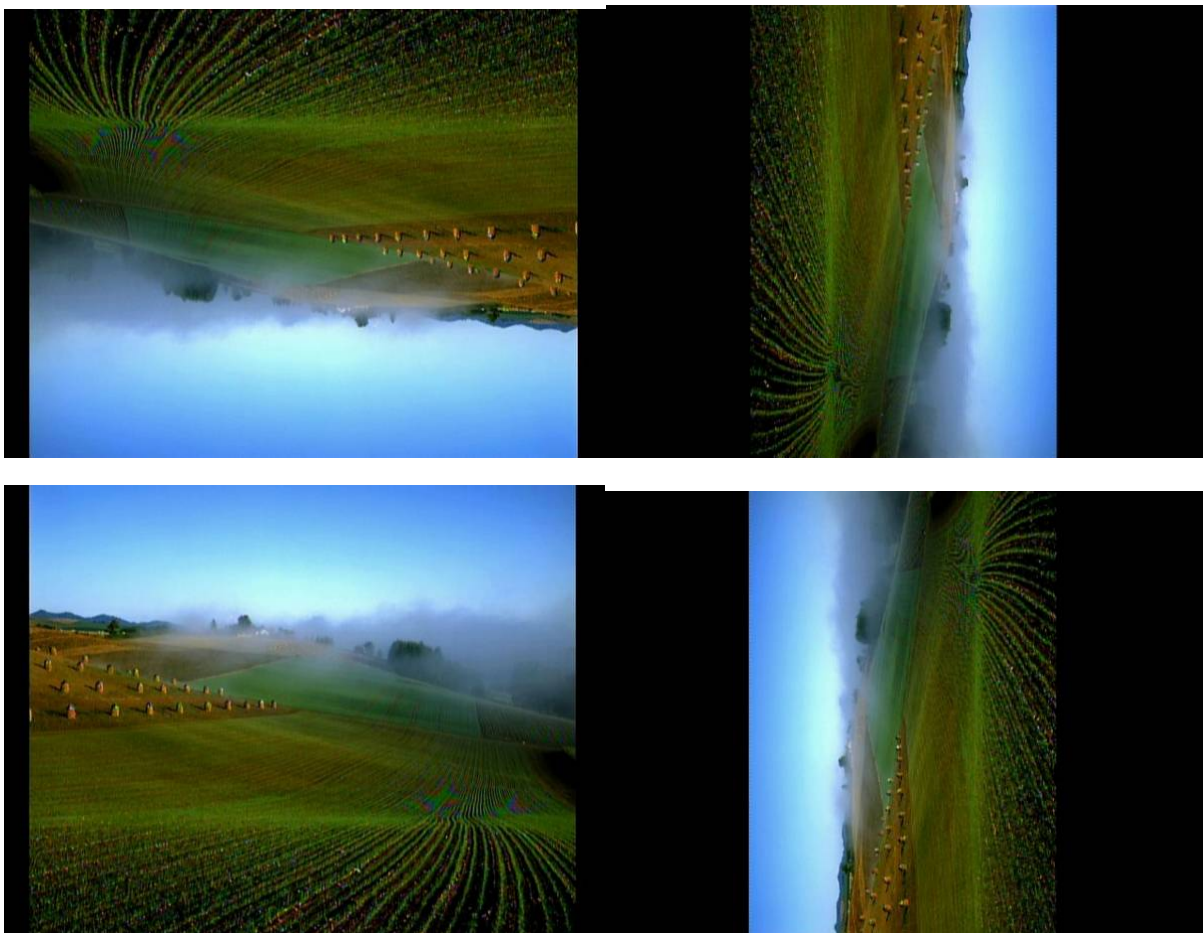


3. Press "**Zoom**" button and press "**Right**" button to shrink the image



Rotate

Press "**Repeat**" button while viewing the photo to enable rotate function.



◆ View Photo in Thumbnails Mode

You can view thumbnails of several photos at a time. To enable the thumbnail mode, please do the following:

1. Go to "**Setup Main Menu**".
2. Select "**Other Settings**".
3. Choose "**Thumbnail**" on "**Photo Display Setup**" Menu.



4. After go back to the folder, you will now view several photos displayed at a time.



3.4.1.3 Video

◆ Supported Video Format

The following movie format are supported

Format	File Extensions
DivX 3	AVI, DivX
DivX 4	AVI, DivX
DivX 5 HD	AVI, DivX
DivX 5 SD	AVI, DivX
DivX 6 HD	AVI, DivX
DivX 6 SD	AVI, DivX
H.264 AVC MPEG4 part 10 (HD)	MPG, MP4, MOV, AVI
H.264 AVC MPEG4 part 10 (SD)	MPG, MP4, MOV, AVI
MJPEG	AVI
MPEG-1	MPG, MPEG, DAT
MPEG-2 HD	MPG, MPEG
MPEG-2 SD	MPG, MPEG
MPEG-2 VOB	MPG, MPEG, VOB
MPEG-4 part 2 ASP	MP4, AVI
VC-1 HD 1080i	WMV
VC-1 HD 720p	WMV
WMV 9	WMV, ASF
WMV HD 1080i	WMV, ASF
WMV HD 720p	WMV, ASF
WMVPro	WMV, ASF
XviD	AVI, MP4
HD 1080i/p	AVI, MP4, MOV
DVD	ISO, IFO

◆ To Play Video

1. Select **"My Media"** from Main Menu to enter server list, or press **"VIDEO"** hotkey on remote control.



2. All available file sources will be listed on the server list, including files stored at media server in your PC, at USB flash stick, at USB external Hard disk drive, USB external CD-ROM drive or at other UPnP servers. Please select the media server you want to use and press **"OK"** button on remote control.



3. Select VIDEO mode and press **"OK"**, or press **"VIDEO"** hotkey to enter video mode.



4. If you select **"DMS"**, you may select **"My Folder"** to view the video files that organized in several subfolders as on your PC, or select **"All Videos"** to see all shared video files. Please use **"Up"** and **"Down"** buttons on the remote control to navigate those folders, and select the option by press **"OK"** or **"Right"** button on the remote control.



5. Select the folder that contains the music files or the subfolders you want, and press **"OK"**, **"Play"**, or **"Left"** button on the remote control to play it.



Note



icon is stand for a folder;



icon is stand for a file.

◆ Control Video Playback

Volume Control

Press "**Vole+**" or "**Vole-**" buttons to control the volume



Mute

Press "**Mute**" button to mute or un-mute the video.

mute video



un-mute video



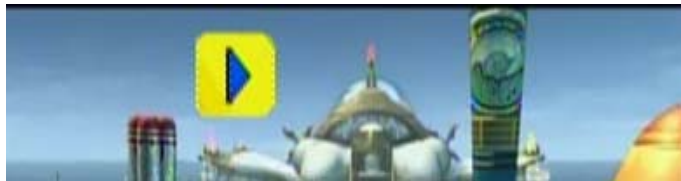
Pause and Play

Press "**PLAY**" button while video is playing you can pause the music by pressing "**PLAY**" button again can resume the music

Pause Video



Play Video



Skip to Next or Previous File

Press "**Next**" or "**Down**" buttons to skip to next video file.

Press "**PREV**" or "**UP**" buttons to skip to previous music file.

Fast Forward

Press ">> (**FF**)" button to fast forward the video file. Press several times to switch the speed.



Fast Forward Video

Rewind

Press “<< (REW)” button to fast backward the video file. Press several times to switch the speed.



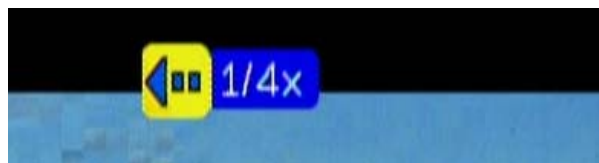
Slow Forward

Press “Slow” button to slow forward the video file. Press several times to switch the speed.



Slow backward

Press “Slow” button and press “Left” button to slow backward the video file. Press “Left” button several times to switch the speed.



◆ Viewing Video Information


Press “Info” button to get video information.



◆ Video Viewing Effect

Zoom in and Zoom Out

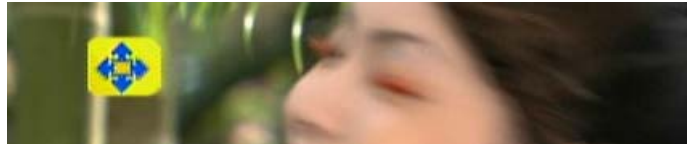


While video is playing, press “” button to enable zoom in/ zoom out function.

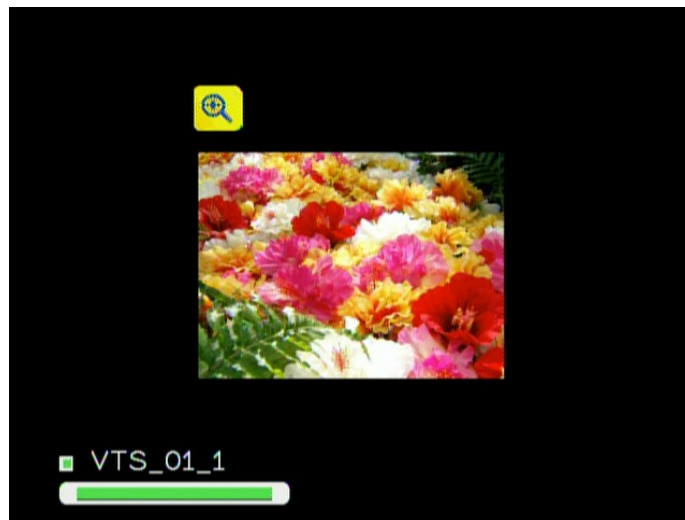
1. Press "**Zoom**" button and press "**Left**" button to enlarge the video screen.



2. When the video screen is larger than TV screen, press "**Zoom**" again and press "**directions**" buttons to move the video screen.



3. Press "**Zoom**" button and press "**Right**" button to shrink the video screen



◆ Repeat and Repeat All

You can turn on the repeat function to continuously play individual video or video within a folder.

Repeat Once

Press "**Repeat**" button once to repeat playing current video file.



Repeat All

Press "**Repeat**" button twice to repeat all video files in current folder.



Repeat Off

Press "**Repeat**" button for three times to disable the repeat mode.



◆ Subtitles and Languages

If you are playing "**VOB**" files or "**AVI**" files, "**SUB /CH+**" button and "**LANG /CH-**" button are available for the subtitle and language switching. Press "**LANG**" to change different language that recorded in "**VOB**" files; and press "**SUB**" button to change different subtitles in both "**VOB**" and "**AVI**" files.

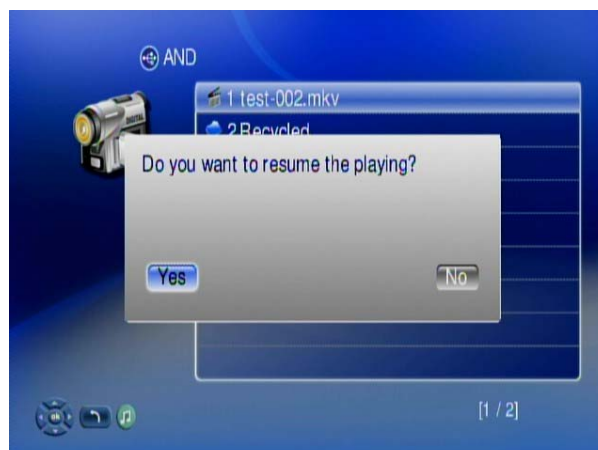


Note

To use it, make sure that it is in the same folder as your video file and that they are both named exactly the same.

◆ Video Resume Playing

The Digital Media Center supports resume video playing to the previous point where the video is interrupted. The device needs to keep powered on to enable this function.



The default setting is that it will ask you every time whether you want to resume the playing when you are back to the interrupted file. If you want to change the setting, please follow below instructions:

(1)Go to **“Set Up”**



(1) Select **“Other Setting”**, and highlight **“Video Resume Playing”**. You can disable the setting or make it always on without asking.



◆ **Play Next Video Automatically**

The default setting is the all the video files in one folder will be played continuously until the last file and then return to the main menu.

If you want to play only the selected file and then return to the main menu, please go to **“Other Settings”** → **‘Play Next Video’** to disable the function.



◆ Search Video

The Digital Media Center can search the video by percentage of total file length. When viewing the video, you can press the numeric keys on the remote control to

Jump to your destination. For example, when you press "7" + "0", you will jump to 70% of the total file length.

Numeric keys




Start playing from 70% of the file length




◆ DVD Menu Navigation

The Digital Media Center support viewing DVD files as you are playing a DVD menu.

Follow below steps to enable DVD menu navigation feature.

1. When you select a DVD file, choose the item with  and press **“Play”**



2. The Menu will appear. Use the navigation button  on the remote control To select the item you want.



3.5 Internet Media

3.5.1 Play Internet Radio – Live 365 TM

Live365™ is an Internet radio service that provides unlimited on-demand access to thousands of radio stations. The audio is streamed directly over the Internet.

Follow below steps to access the radio stations:

1. Make sure your network setting is correct and be able to access internet.
2. Select "**iMedia**" from main menu or press "**iMedia**" button on the remote control.



3. Select "**Live 365**" and press "**OK**" button on remote control.



4. Select a catalog you prefer from list, or select "**All Broadcasts**" to browse all radio stations.



5. Select a radio station from list, and press **“OK”**, **“Play”**, or **“Left”** button to play it.



Note



is stand for a radio station.

Live365- Playing



3.5.2 Play Internet Radio – My Radio

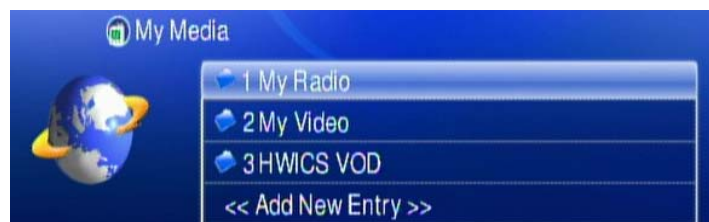
1. Make sure your network setting is correct and be able to access internet
2. Select “**iMedia**” from main menu or press “**iMedia**” button on the remote control.



3. Select “**My Media**” and press “**OK**” button on remote control.

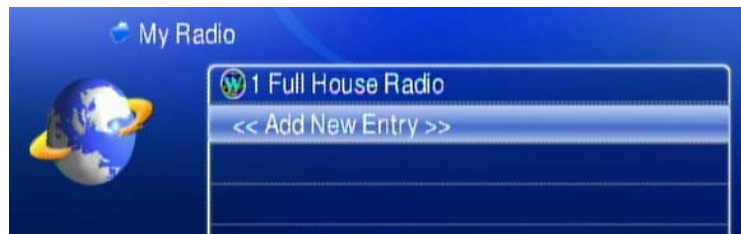


4. Select **"My Radio"** and press **"OK"** to enter.

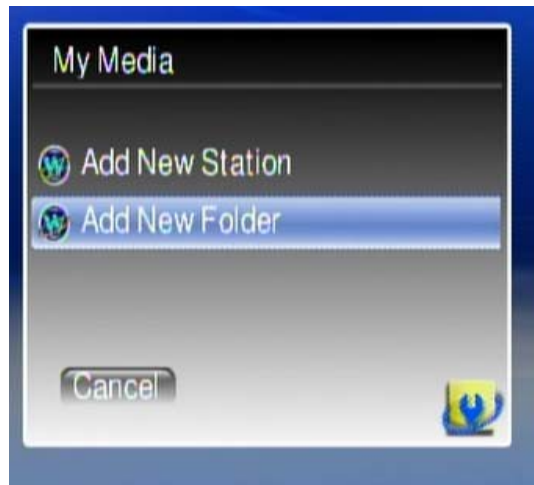


5. There is some radio stations listed as default; you can select one of the stations from list and play it.

6. You can also add your favorite radio station manually by select **"Add New Entry"**.

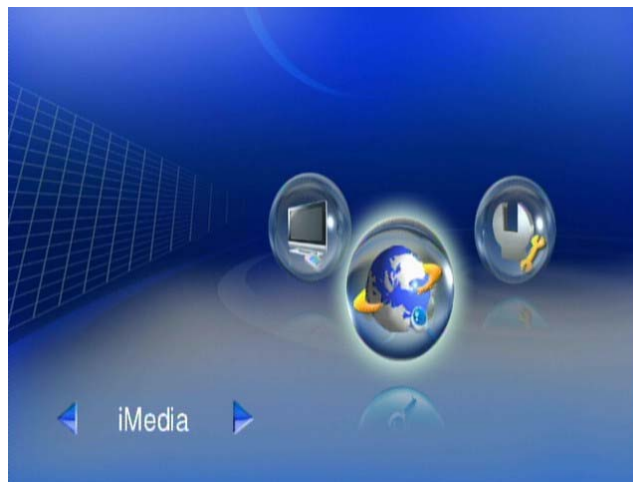


7. Select **"Add New Station"** or **"Add New Folder"** to configure a new radio station or Folder; then enter related information of this new radio station or Folder.



3.5.3 Play Internet Video – My Video

1. Make sure your network setting is correct and be able to access internet
2. Select "**iMedia**" from main menu or press "**iMedia**" button on the remote control.



3. Select "**My Media**" and press "**OK**" button on remote control.



4. Select **"My Video"** and press **"OK"** to enter.



5. There are also some internet video stations listed as default; you can select one of the stations from the list and play it.



Note



is stand for a video station.

3.5.4 Viewing "Youtube" Content

You can use the Digital Media Center to view Youtube content. The Youtube content is transcoded by DMS, and you must have a PC running the DMS for Windows software to use this feature.

To view YouTube content, follow these steps:

1. Go to the Main Page and select **"My Media"**



2. Select **"Video"**



3. Select **"Internet Videos"**



4. Select 'Youtube'



6. The Digital Media Center list the "Youtube" content in 7 categories, choose the item you will view and press "OK".



Note

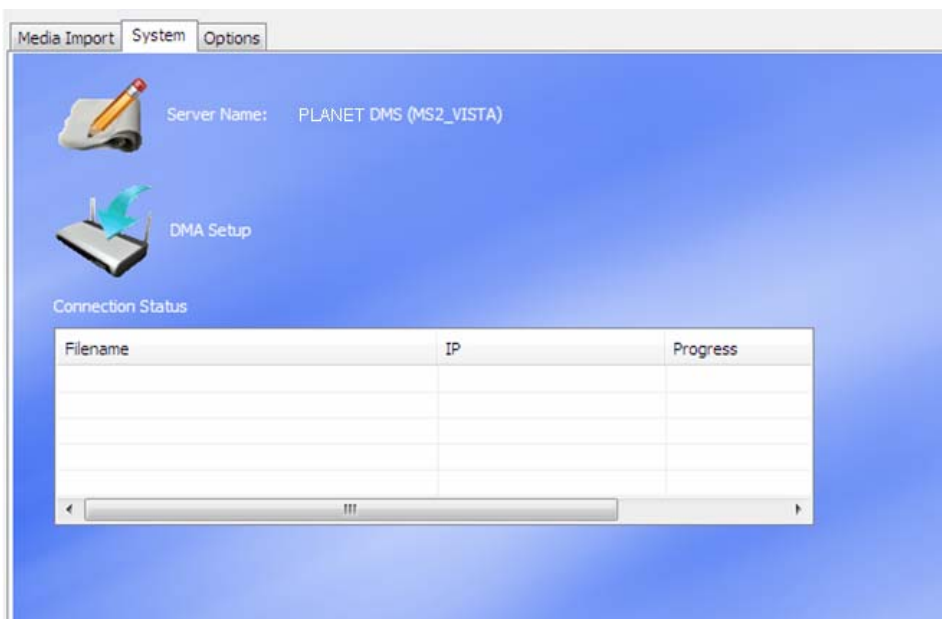
The Youtube content on Digital Media Center is streamed from www.youtube.com

3.5.5 Add/Delete the Internet Radio/TV Stations Lists

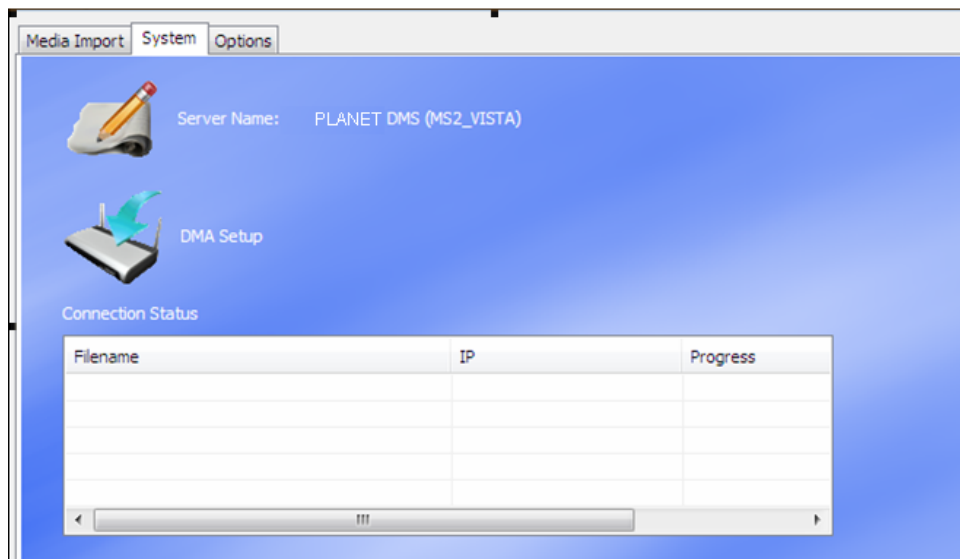
With a PC running Media Server software, you can add/delete your favorite Station lists of your Digital Media Center and even other DMA-200 available in local network.

You have to install Media software to your PC first. Please make reference to **Chapter 3** on how to install the DMS software. After installation is completed, follow below steps to add or delete your favorite Internet Radio/TV lists.

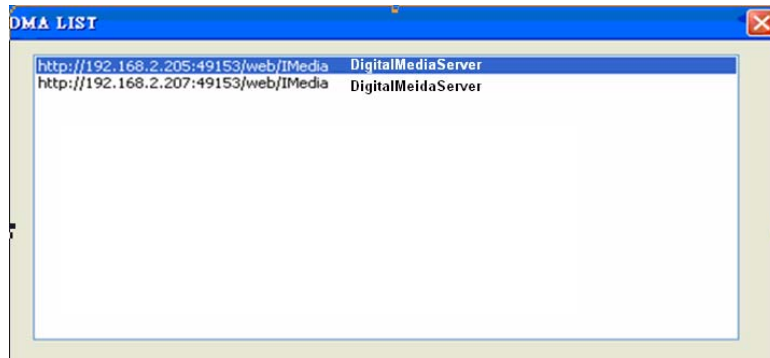
1. Select "**System**" tab from Media Server.



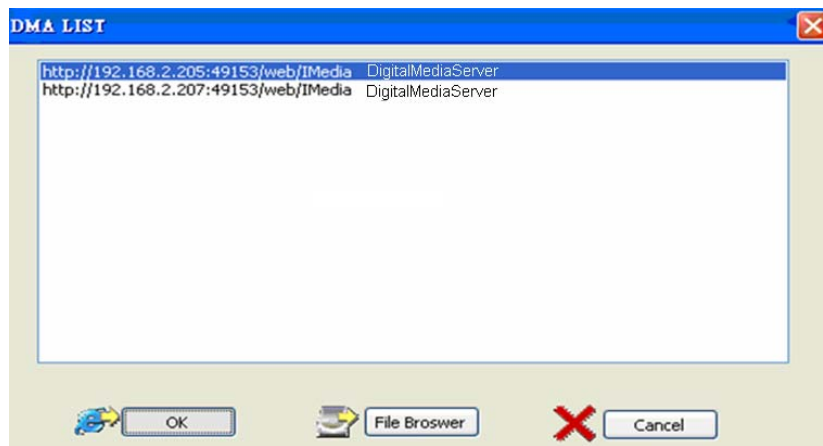
2. Double click "**DMA Setup**" icon.



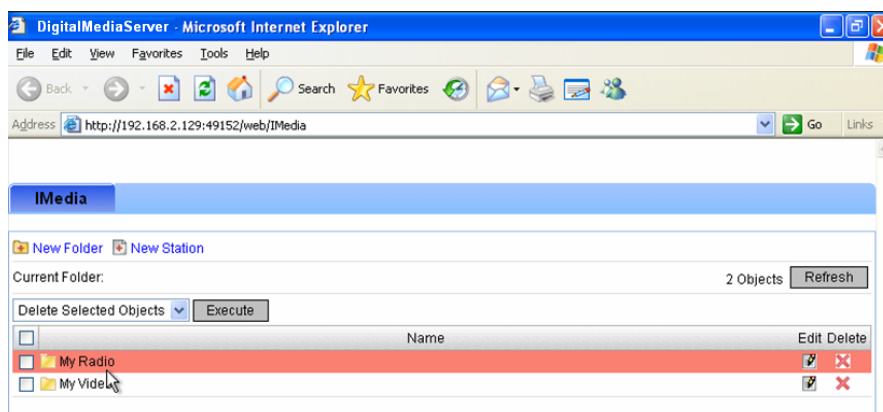
3. The “**DMA List**” menu pops up, and shows all available Digital Media Center on the local network. Following is the example with 2 Digital Media Center connected to the same local network.



4. Choose the one you want and double click “OK” icon.



5. The browser links automatically to the IP of Digital Media Center you select. This may takes few seconds based on your computer speed.



6. You can edit/delete list from the browser via your PC now. Go on step 3~5 if you want to manage other Digital Media Center **iMedia** lists on the network.

3.6 Firmware Upgrade and Reset to Default

3.6.1 Upgrade by Direct Internet Access

You can view the firmware version and check for updates, even if your computer is not running. Digital Media Center uses your network router to access Internet.

Follow the steps below to check for product updates.

1. Go to "**Set Up Main Menu**", Select "**Version**", and choose '**Firmware upgrade**'
2. Choose "**Internet Upgrade**", the system will automatically search available firmware code.
3. Follow the onscreen instructions to complete the upgrade.
4. When the upgrade is successfully finished, Digital Media Center will reboot automatically.

3.6.2 Upgrade by Using USB Flash Stick

As an option, Digital Media Center provides you the other choice for using USB flash for updates. Follow the steps below to check for product updates:

1. Have your USB flash ready, download by PC the latest firmware from <http://www.planet.com.tw> to USB flash stick.
2. Insert the USB flash to the USB port of Digital Media Center.
3. Go to "**Set Up Main Menu**", Select "**Version**", and choose '**Firmware upgrade**'
4. Choose "**USB Upgrade**", the system will automatically search available firmware code.
5. Follow the onscreen instructions to complete the upgrade.
6. When the upgrade is successfully finished, Digital Media Center will reboot automatically.



Do not power off the system or remove the USB flash while the upgrade process is running.

3.6.3 Reset to Default

You can restore all configurations to factory default settings by following below steps:

1. Go to "**Set Up Main Menu**", Select "**Version**", and choose "**Reset to Default**"
2. Make sure you want to do so, then press "**OK**" button to restore system to default settings.



Restoring Digital Media Center to its default settings will erase the network set up and media sever configuration. You will need to set up Digital Media Center again to run on your network and to access media files.

3.7 Miscellaneous Settings

System Language and other settings apply on system are configured in the "**System Setup**" of the "**Setup Main Menu**". Please select the item that you want to configure and press "**OK**" button or "**Right**" button on remote control to enter sub page. After configuration, please press "**Back**" button or "**Left**" button to leave the setup menu and save the configurations that you changed.



3.7.1 System Setup

If you want to change the configuration of your setup, you can select the "**Setup**" from Main Page, and select "**System Setup**" from Setup Main Menu. You can select, configure or adjust **Language**, **TV mode**, **Audio**, **Video** and other settings here.





System Setup main page

Below table is a brief description for the System Setup selection.

Item Name	Value	Use
Language	Language	Select
TV Mode Setup	TV System/ Video Output/ Video Scale	Configure
Audio Setup	Digital Audio Output/Analog Audio Output	Configure
Video Setup	Brightness/ Contrast/ HUE/ Saturation	Adjust
Other Setting	Screen Saver/ Photo Display Mode/ Slide Show Time/ BG Music	Configure

3.7.1.1 Language

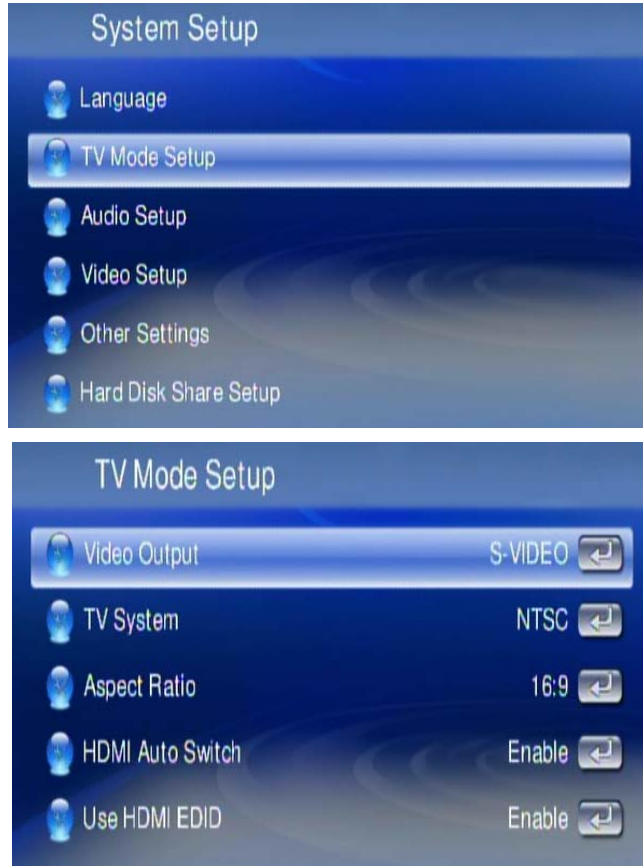


Language Table

Item Name	Value	Use
Language	English/ German/ French/ Italian/ Spanish/ Portuguese / Turkish/ Netherlandish/ Serbian/ Hewbrew/ Traditonal Chinese	Select

3.7.1.2 TV Mode Setup

You can go to the “**System Setup**” menu to change the TV mode setting, including the Video output, TV system and aspect ratio.



TV Mode Setup Table

Item Name	Value	Use
Video Output	P-SCAN YPbPr/ S-Video/ HDMI	Select
TV System	NTSC/ PAL	Select
Video Scale	4:3 PS/ 16:9/ 4:3 LB	Select

3.7.1.3 Audio Setup

If you are connecting the Optical/Coaxial cable, please make sure the Digital Audio Output mode is on. (SPDIF-PCM / SPDIF-RAW)



Audio Setup Table

Item Name	Value	Use
Digital Audio Output	SPDIF-PCM/ SPDIF-RAW/ SPDIF-OFF	Select
Analog Audio Output	MONO R/ MONO L/ MIX MONO/ STEREO	Select

3.7.1.4 Video Setup



Video Setup Table

Item Name	Value	Use
Brightness	0 ~ 32	Adjust
Contrast	0 ~ 32	Adjust

HUE	0 ~ 32	Adjust
Saturation	0 ~ 32	Adjust

3.7.1.5 Other Settings

The “**Photo Display Setup**”, “**Video Resume Playing**” and “**Play Next Video**”

You can configure the “**Screen Saver Time**”, “**Slide Show Time**” and “**Music Auto Play**” function by this item.



Other Settings Table

Item Name	Value	Use
Screen Saver	OFF / 1 min~30 min	Select
Photo Display Setup	List / Thumbnail	Switch
Slide Show Time	1 sec ~ 3 min	Select
Music Auto Play	Repeat All/ OFF/ One Time	Select
Video Resume Playing	Ask/Always/Off	Switch
Play Next Video	Enable/Disable	Switch

3.8 FAQ

Q: No Television display or Poor Display.

- A:**
1. Make sure your TV is turned on and switched to the correct input.
 2. Make sure Digital Media Center is turned on and switched to the correct TV mode.
 3. If the TV Mode that you are using is not the right one for your television, you may not be able to see the display on television. To fix this problem, push "**Output**" key on the remote control. You can cycle through each of the possible TV modes to find and select the correct one.
 4. Make sure you are using the correct video cables and that they are connected firmly to Digital Media Center and to your TV.
 5. The Power adapter for Digital Media Center and your TV are securely connected to a working power source.

Q: Digital Media Center does not find my network

A: If you use wireless networks, make sure that the Wireless Network Name (SSID) and the security settings of Digital Media Center and media server match exactly. If you use wired network, make sure the cable hooked correctly.

Q: Digital Media Center does not find the DMS Server

- A:**
1. Verify that the DMS Server software was installed on your PC.
 2. Verify that Digital Media Center and the PC running the software are on the same subnet and that they can communicate with each other. In most cases, this means that the first three fields of the two IP address should be the same.
 3. Make sure you have pressed the "**Start Service**" button on DMS Server after importing media files.

Q: Digital Media Server can only be seen for a short time

A: Some firewall or antivirus software may cause failures of the UPnP communications between Digital Media Center and Digital Media Server. Please configure your firewall setting to allow the access of "**UPnP**" and Digital Media Server. Or you may disable the firewall or antivirus applications while using Digital Media Server!

Q: Digital Media Center does not receive a valid IP Address

- A:** 1. Verify that a working DHCP server is on your network. PCs on the network should get IP addresses in the correct range.
2. You can use a Static IP Address of there is a problem connecting to the server.

Q: No Subtitle when playing "mpeg2" files

A: Please make sure to enable the "**subtitle**" function by press "**subtitle button**" every time when you are watching mpeg2 video files; also please enable this function with each mpeg2 video file that has subtitle file with it.

Q: No Subtitle when playing "mpeg2" files after pressing "subtitle" button

A: Please make sure the conversation of the "mpeg2" video file has begun before pressing "**subtitle**" button.

Q: No Subtitle when playing "mpeg2" files even the "subtitle function" is enabling

A: Please note if you have enabled the "**Transcoding**" function, the subtitle function might not work for some video files.

Q: Fast forward or slow forward is not working

A: Please note if you have enabled the "**Transcoding**" function, the "**fast forward**", "**fast backward**", "**slow forward**", and "**slow backward**" functions will not work due to limitation.

Q: Can not add music files to BGM list?

A: Please make sure you did not add more than 500 music files to BGM list since the capacity of BGM list is 500 files.

Q: Can not find Firmware Upgrade file in the USB device

A: Please check if you put the latest firmware file under root directory of USB device, or Digital Media Center can not find it.

Q: Performance of video playing is not so good?

A: If you use wireless connection, the playing performance can be affected by the wireless environment, you may try to enable the "**Transcoding**" function to make the video playing smoother.

Q: USB HDD External Enclosure is not supported?

A: Please use external power supply for USB HDD (or USD CD-ORM drive) External Enclosure.

Appendix A Specification

Product	Digital Media Center	
Model	DMA-200	
Hardware Specification		
Port	Video Output	HDMI (480p, 576p, 720p50, 720p60, 1080i50, 1080i60, 1080p60), S-Video/Component Video, Composite (CVBS)
	Audio Output	Audio (Right, Left), S/PDIF (Coaxial)
	Ethernet	1 Ethernet: 10/100/1000Mbps, Half or Full Duplex, Auto-negotiation, Auto MID/MID-X
	USB	1 USB 2.0 Host (External Storage or CD-ROM drive support)
LED Indicators	1 Power LED light on front panel / 1 Network LED light on front panel	
Power Switch	1 Power On / Off Switch on rear panel	
Web TV / Radio Protocol	RTSP, HTTP, and MMS	
Digital Home Standard	UPnP 1.0 and DLNA 1.0	
Video Format	1080p Full HD Resolution, MPEG1/2/4 SD/HD, AVI, H.264 HD, WMV9, VC1, and Divx / Xvid	
Image Format	JPEG, TIFF, PNG, GIF, and BMP	
Audio Format	MPEG 1 Layer 1/2, MP3, MPEG 2 AAC, MPEG 4 AAC, AC3, WMA, and WMA Pro	
Content Protection	MSFT DRM	
Content File Format	mkv, avi, wmv, iso, ifo, mp4, vob, asf, m2ts, mov, tp, ts, and mpg	
Sub-Titles Format	Text: srt, ssa, and idx / Image: sub	
Multi-Languages	English, French, German, Spanish, Italian, Portuguese, Netherlands, Japanese, Chinese (Simplified/Traditional), and Hebrew.	
Support OS	Windows 2000 / XP / Vista	
Utility Minimum System Requirements	1.8GHz Processor or higher	

	512MB RAM or above (512MB recommended) HD space at least 1 GB free for installation Microsoft DirectX 9 or above Windows 2000 or above Windows Media Player 9 or above
Environment Specifications	
Dimension (W x D x H)	200 x 120 x 55 mm (W x D x H)
Power	5V DC, 2.6A
Operating Environment	Operating temperature: 0 ~ 45 Degree C Storage temperature: -25 ~ 55 Degree C Humidity: 10 ~ 90% non-condensing
Emission	FCC, CE

EC Declaration of Conformity

For the following equipment:

*Type of Product : Digital Media Center

*Model Number : DMA-200

* Produced by:

Manufacturer's Name : **Planet Technology Corp.**

Manufacturer's Address : 11F, No. 96, Min Chuan Road, Hsin Tien
Taipei, Taiwan, R.O.C.

is herewith confirmed to comply with the requirements set out in the Council Directive on the Approximation of the Laws of the Member States relating to Electromagnetic Compatibility (89/336/EEC, 92/31/EEC, 93/68/EEC).

For the evaluation regarding the Electromagnetic Compatibility, the following standards were applied:

EN 55022	(2006, Class B)
EN 55024	(1998 + A1: 2001 + A2: 2003)
EN 61000-3-2	(2006, Class A)
EN 61000-3-3	(1995 + A1: 2001 + A2: 2005)
IEC 61000-4-2 Edition 1.2	(2001-04)
IEC 61000-4-3	(2002 + A1: 2002)
IEC 61000-4-4	(2004)
IEC 61000-4-5 Edition 1.1	(2001-04)
IEC 61000-4-6 Edition 2.1	(2004-11)
IEC 61000-4-8 Edition 1.1	(2001-03)
IEC 61000-4-11 2nd Edition	(2004-03)

Responsible for marking this declaration if the:

Manufacturer **Authorized representative established within the EU**

Authorized representative established within the EU (if applicable):

Company Name: Planet Technology Corp.

Company Address: 11F, No.96, Min Chuan Road, Hsin Tien, Taipei, Taiwan, R.O.C


Person responsible for making this declaration

Name, Surname Jonas Yang

Position / Title : Product Manager

Taiwan
Place

19th Sep., 2008
Date


Jonas
Legal Signature

PLANET TECHNOLOGY CORPORATION

e-mail: sales@planet.com.tw http://www.planet.com.tw

11F, No. 96, Min Chuan Road, Hsin Tien, Taipei, Taiwan, R.O.C. Tel:886-2-2219-9518 Fax:886-2-2219-9528

Free Manuals Download Website

<http://myh66.com>

<http://usermanuals.us>

<http://www.somanuals.com>

<http://www.4manuals.cc>

<http://www.manual-lib.com>

<http://www.404manual.com>

<http://www.luxmanual.com>

<http://aubethermostatmanual.com>

Golf course search by state

<http://golfingnear.com>

Email search by domain

<http://emailbydomain.com>

Auto manuals search

<http://auto.somanuals.com>

TV manuals search

<http://tv.somanuals.com>