

802.11g Wireless Access Point

WAP-4036

Quick Installation Guide

Table of Contents

Package Content.....	3
Hardware Installation	4
Initial Configuration.....	5
Further Configuration	8

Package Content

- 1 x WAP-4036
- 1 x Power Adapter
- 1 x User's Manual CD
- 1 x Quick Installation Guide
- 1 x External Antenna
- 1 x Ethernet Cable



Note

If any of the above items are missing or damaged, contact your local dealer for support.

Hardware Installation

Before you proceed with the installation, it is necessary that you have enough information about the WAP-4036.

- Keep the access point as central in your work area as possible. Signal strength and speed fall off with distance.
- Higher is often better. For instance, set it up on the top shelf of a bookcase rather than the bottom one, if possible.

Prior to connecting the hardware, make sure to power off your Ethernet device and Wireless Access Point (AP). Then follow the steps below to connect the related devices.

Step 1: Connect your computer to the LAN port of WAP-4036 by using RJ-45 cable. Attach one end of the Ethernet cable with RJ-45 connector to your hub, switch or a computer's Ethernet port, and the other end to one of the LAN ports of your AP.

Step 2: Assemble the antenna to WAP-4036. Try to place them to a position that can best cover your wireless network. The antenna's position will enhance the receiving sensitivity.

Step 3: Connect the power adapter. Connect the single DC output connector of the power adapter to the power jack on the side of the AP. Then plug the Power Adapter into an AC outlet.

Step 4: Power on the following devices in this order: HUB or Switch, AP, and PCs



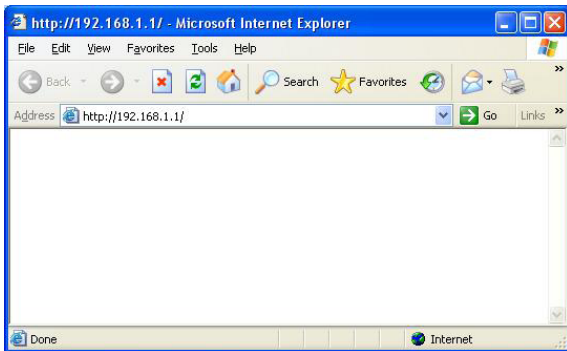
ONLY use the power adapter supplied with the WAP-4036. Otherwise, the product may be damaged. If you want to reset your WAP-4036 to default settings, press the Reset button 5 second. Then release the button and wait for 10 seconds for rebooting.

Initial Configuration

1. Open your web browser.
2. Enter WAP-4036 IP address (default IP address is <http://192.168.1.1>) into the address field of the web browser. Please also make sure your PC's IP address is in the same IP range with WAP-4036.



If the AP's LAN port has been changed with new IP address, enter the new IP address instead.



3. A User Name and Password dialog box will appear. Please enter your User Name and Password here. The User Name and Password are "**admin**" by default. Click "OK" to access the management page.



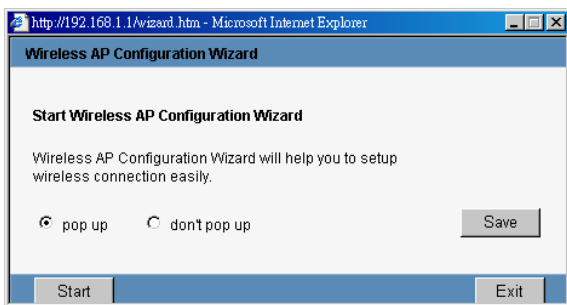
4. Once you log in, the Configuration Wizard and Status page will pop up at the same time. Configuration Wizard will appear every time you enter WAP-4036. If you do not want to display wizard by itself next time, select “don’t pop up” option and click “save”. In the future, you can still have wizard appeared by clicking “Wizard” tab on upper right panel of WAP-4036’s web page.

Click “Start” to go to next step.



Note

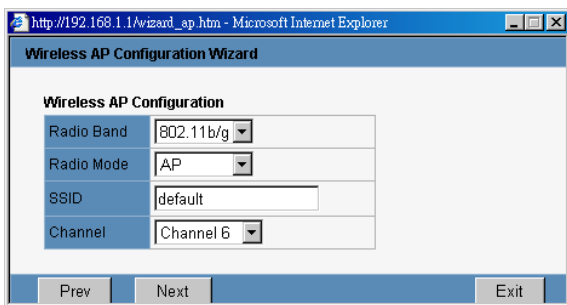
In order to start the wizard, you will need to have the pop-up blocker DISABLED in your web browser.



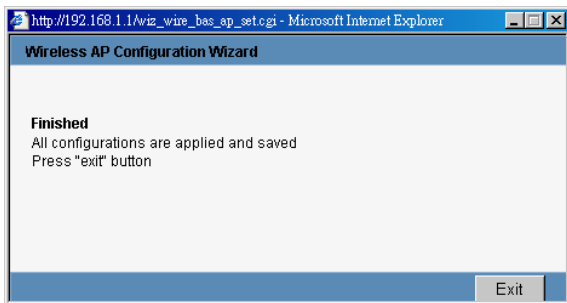
5. On this page, you can set the Radio Band, Mode, SSID and Channel to your WAP-4036. The SSID is to identify your wireless network. All the devices (AP and wireless client) on the same wireless network must be configured to the same SSID.

You can leave the Radio Band and Channel settings to default. On the Mode Settings, the default is AP mode which allow your wireless client to connect each other and the wired Ethernet network. Please refer to the user's manual for detail on other available modes.

Click "Next" to proceed.



6. You have finished all basic configurations for WAP-4036. Please press "Exit" to close this window. The WAP-4036 will perform reboot if major changes are made. After reboot completes, the WAP-4036 is ready to use.



Further Configuration

If you want to configure more detail settings of WAP-4036, please refer to the manual in the bundled CD. If you have any difficulty on resolving the problem while installing or using the WAP-4036, please feel free to contact PLANET for support.

Free Manuals Download Website

<http://myh66.com>

<http://usermanuals.us>

<http://www.somanuals.com>

<http://www.4manuals.cc>

<http://www.manual-lib.com>

<http://www.404manual.com>

<http://www.luxmanual.com>

<http://aubethermostatmanual.com>

Golf course search by state

<http://golfingnear.com>

Email search by domain

<http://emailbydomain.com>

Auto manuals search

<http://auto.somanuals.com>

TV manuals search

<http://tv.somanuals.com>