

802.11b WLAN Outdoor AP

WAP-5000

User's Manual



Copyright

Copyright© 2004 by PLANET Technology Corp. All rights reserved. No part of this publication may be reproduced, transmitted, transcribed, stored in a retrieval system, or translated into any language or computer language, in any form or by any means, electronic, mechanical, magnetic, optical, chemical, manual or otherwise, without the prior written permission of PLANET.

PLANET makes no representations or warranties, either expressed or implied, with respect to the contents hereof and specifically disclaims any warranties, merchantability or fitness for any particular purpose. Any software described in this manual is sold or licensed "as is". Should the programs prove defective following their purchase, the buyer (and not this company, its distributor, or its dealer) assumes the entire cost of all necessary servicing, repair, and any incidental or consequential damages resulting from any defect in the software. Further, this company reserves the right to revise this publication and to make changes from time to time in the contents hereof without obligation to notify any person of such revision or changes..

All brand and product names mentioned in this manual are trademarks and/or registered trademarks of their respective holders.

Federal Communication Commission Interference Statement

This equipment has been tested and found to comply with the limits for a Class B digital device, pursuant to Part 15 of FCC Rules. These limits are designed to provide reasonable protection against harmful interference in a residential installation. This equipment generates, uses, and can radiate radio frequency energy and, if not installed and used in accordance with the instructions, may cause harmful interference to radio communications. However, there is no guarantee that interference will not occur in a particular installation. If this equipment does cause harmful interference to radio or television reception, which can be determined by turning the equipment off and on, the user is encouraged to try to correct the interference by one or more of the following measures:

1. Reorient or relocate the receiving antenna.
2. Increase the separation between the equipment and receiver.
3. Connect the equipment into an outlet on a circuit different from that to which the receiver is connected.
4. Consult the dealer or an experienced radio technician for help.

FCC Caution:

To assure continued compliance.(example-use only shielded interface cables when connecting to computer or peripheral devices). Any changes or modifications not expressly approved by the party responsible for compliance could void the user's authority to operate the equipment.

This device complies with Part 15 of the FCC Rules. Operation is subject to the Following two conditions: (1) This device may not cause harmful interference, and (2) this Device must accept any interference received, including interference that may cause undesired operation.

Federal Communication Commission (FCC) Radiation Exposure Statement

This equipment complies with FCC radiation exposure set forth for an uncontrolled environment. In order to avoid the possibility of exceeding the FCC radio frequency exposure limits, human proximity to the antenna shall not be less than 20 cm(8 inches) during normal operation.

R&TTE Compliance Statement

This equipment complies with all the requirements of DIRECTIVE 1999/5/CE OF THE EUROPEAN PARLIAMENT AND THE COUNCIL OF 9 March 1999 on radio equipment and telecommunication terminal Equipment and the mutual recognition of their conformity (R&TTE)

The R&TTE Directive repeals and replaces in the directive 98/13/EEC (Telecommunications Terminal

Safety

This equipment is designed with the utmost care for the safety of those who install and use it. However, special attention must be paid to the dangers of electric shock and static electricity when working with electrical equipment. All guidelines of this and of the computer manufacture must therefore be allowed at all times to ensure the safe use of the equipment.

Revision

User's Manual for PLANET 802.11b WLAN Outdoor AP

Model: WAP-5000

Rev: 1.0 (January, 2004)

Part No. EM-WAP5K

TABLE OF CONTENTS

CHAPTER 1 INTRODUCTION.....	1
1.1 PACKAGE CONTENTS	1
1.2 SYSTEM REQUIREMENTS.....	1
1.3 FEATURES	2
1.4 SPECIFICATION	2
1.5 WIRELESS PERFORMANCE	3
CHAPTER 2 HARDWARE INSTALLATION	4
CHAPTER 3 PLANET OUTDOOR WLAN MANAGEMENT SYSTEM.....	7
3.1 INTRODUCTION	7
3.2 INSTALLATION	7
3.3 USING PLANET OUTDOOR WMS	10
3.3.1 <i>Kick Start</i>	11
3.3.2 <i>Hosts View</i>	14
3.3.3 <i>Trap View</i>	32
CHAPTER 4 TROUBLESHOOTING.....	33

Chapter 1 Introduction

WAP-5000 is an IEEE 802.11b Wireless Outdoor Access Point. The special designed housing allows WAP-5000 to be installed in exposed locations under the rigorous weather conditions including heavy rain, wind, and snow. Except for 64/128bit WEP encryption, WAP-5000 also integrates 802.1X authentication. Cooperating with a RADIUS server can make your wireless LAN more secure than ever. Provided with SNMP-based utility, WAP-5000 is easy to be installed and managed. The POE (Power Over Ethernet) design reduces power cables installation cost and offers more flexibility when selecting the location of WAP-5000. With all these advanced features, WAP-5000 is the ideal solution for outdoor networks.

1.1 Package Contents

Make sure that you have the following items:

- WAP-5000 x 1
- Power Adapter x 1
- DC injector x 1
- Mounting kit x 1
- 25m CAT5 cable with RJ-45 plug and ODU connector x 1
- 0.3m N-type to N-type cable x 1
- Quick Installation Guide x 1
- Utility and User's manual CD x 1

Note:	If any of the above items are missing, contact your supplier as soon as possible.
--------------	-----------------------------------------------------------------------------------

1.2 System Requirements

Before installation, please check the following requirements with your equipment.

- An x86-based microcomputer running Microsoft Windows 95, 98, Me, NT 4.0, 2000, or XP
- Microsoft Internet Explorer 4.01 or later
- A connection to an Ethernet network

Particular versions of Windows have the following additional requirements:

1. On Windows 95, Microsoft DCOM95 must be installed. You can obtain DCOM95 from the following Microsoft Web page:
<http://www.microsoft.com/com/dcom/dcom95/download.asp>
DCOM95 can also be found on the Microsoft Visual Basic 5.0 CD-ROM (Enterprise, Professional, or Standard edition), in the directory \Pro\Tools\DCOM95.
2. On Windows 98 (with the exception of Windows 98SE, which already includes this component), Microsoft DCOM98 must be installed. You can use the following link to download it:
<http://www.microsoft.com/com/dcom/dcom98/download.asp>
3. On Windows NT 4.0, Service Pack 4 or later must be installed.

1.3 Features

- Wireless LAN IEEE802.11b compliant
- Solid housing provides protection against rigorous weather conditions
- Strong network security with 802.1X authentication, 64/128-bit WEP encryption, user isolation, protocol filtering, and MAC access control
- One detachable N-type female connectors can connect to external antenna for expanding connection distance
- 5 levels of adjustable transmit power control
- High speed data transfer rate up to 11Mbps
- Auto fall-back data rate for long-distance communication and noisy environments
- Provide powerful Windows-base SNMP utility for installation and management
- Support DHCP Client
- Power over Ethernet design

1.4 Specification

Model	WAP-5000
Standard	IEEE 802.11b
Signal Type	DSSS (Direct Sequence Spread Spectrum)
Modulation	BPSK, QPSK, CCK
Port	10Base-TX (RJ-45) * 1
Antenna Connector	N-type Female * 1
Output Power	5 levels adjustable 100mW, 50mW, 30mW, 10mW, and 5mW
Sensitivity	-84dBm
Operating Mode	AP
Security	64/128-bit WEP encryption Password protect 802.1X security MAC filtering SSID Broadcast Disable function Protocol filtering User isolation
Frequency Band	2.4 – 2.484GHz
Data Rate	Up to 11Mbps (1/2/5.5/11)
Dimensions (L x W x H)	165 x 135 x 55mm
Weight	1130g
Environmental Specification	Operating temperature: -20 – 70 degree C

	Storage temperature: -30 – 80 degree C Relative humidity: 5% – 95% (non-condensing)
Power Requirement	12V DC, 2.0A
Electromagnetic Compatibility	FCC, CE

1.5 Wireless Performance

The following information will help you utilizing the wireless performance, and operating coverage of WAP-5000.

1. Site selection

To avoid interferences, please locate WAP-5000 and wireless clients away from transformers, microwave ovens, heavy-duty motors, refrigerators, fluorescent lights, and other industrial equipments. Keep the number of walls, or ceilings between AP and clients as few as possible; otherwise the signal strength may be seriously reduced. Place WAP-5000 in open space or add additional WAP-5000 as needed to improve the coverage.

2. Environmental factors

The wireless network is easily affected by many environmental factors. Every environment is unique with different obstacles, construction materials, weather, etc. It is hard to determine the exact operating range of WAP-5000 in a specific location without testing.

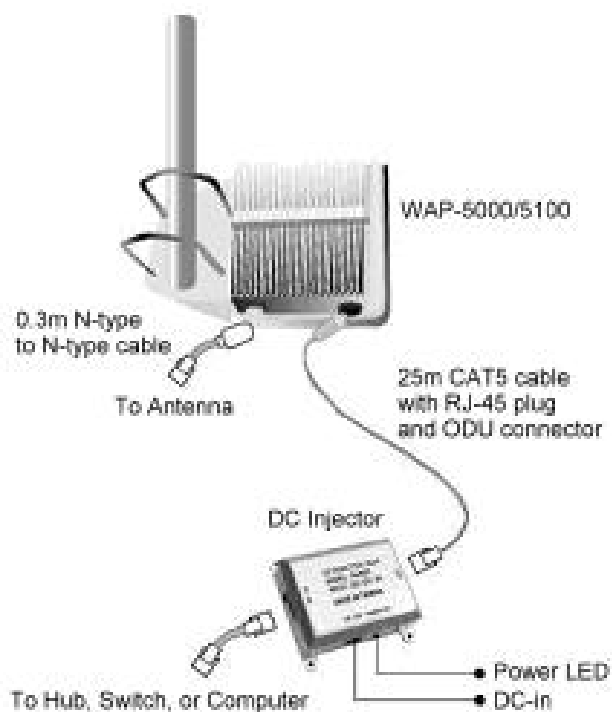
3. Antenna adjustment

Please check the specification of the antenna you want to use, and make sure it can be used on WAP-5000.

Chapter 2 Hardware Installation

Before you proceed with the installation, it is necessary that you have enough information about the WAP-5000.

1. Locate an optimum location for the WAP-5000.
2. Assemble the antennas to WAP-5000. Try to place them to a position that can best cover your wireless network. The antenna's position will enhance the receiving sensitivity.
3. Using provided CAT5 waterproof cable; connect the waterproof connector port of the WAP-5000 to the ODU port of DC Injector.
4. Using Category 3 or higher UTP or STP cable, connect the RJ-45 port of DC Injector to a 10Mbps or 10/100Mbps Ethernet hub or switch, and connect the management station to a hub or switch on the same LAN.
5. Connect the output cord of power adapter to the DC Injector's DC input jack, and plug it into an AC outlet to power up the WAP-5000.
6. Connect the green grounding wire on WAP-5000 to the same grounding system with the AC wall outlet. The grounding system must comply with the National Electrical Code and safety standards that apply in your country. Always check with a qualified electrician if you are in doubt as to whether your outdoor installation is properly grounded.



Note: ONLY use the power adapter supplied with the WAP-5000. Otherwise, the product may be damaged.

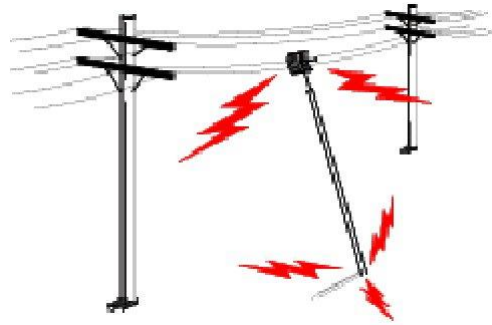


OUTDOOR INSTALLATION WARNING

IMPORTANT SAFETY PRECAUTIONS:

LIVES MAY BE AT RISK! Carefully observe these instructions and any special instructions that are included with the equipment you are installing.

CONTACTING POWER LINES CAN BE LETHAL. Make sure no power lines are anywhere where possible contact can be made. Antennas, masts, towers, guy wires or cables may lean or fall and contact these lines. People may be injured or killed if they are touching or holding any part of equipment when it contacts electric lines. Make sure there is NO possibility that equipment or personnel can come in contact directly or indirectly with power lines.



Assume all overhead lines are power lines.

The horizontal distance from a tower, mast or antenna to the nearest power line should be at least twice the total length of the mast/antenna combination. This will ensure that the mast will not contact power if it falls either during installation or later.

TO AVOID FALLING, USE SAFE PROCEDURES WHEN WORKING AT HEIGHTS ABOVE GROUND.

- I Select equipment locations that will allow safe, simple equipment installation.
- I Don't work alone. A friend or co-worker can save your life if an accident happens.
- I Use approved non-conducting ladders and other safety equipment. Make sure all equipment is in good repair.
- I If a tower or mast begins falling, don't attempt to catch it. Stand back and let it fall.
- I If anything such as a wire or mast does come in contact with a power line, **DON'T TOUCH IT OR ATTEMPT TO MOVE IT.** Instead, save your life by calling the power company.
- I Don't attempt to erect antennas or towers on windy days.

MAKE SURE ALL TOWERS AND MASTS ARE SECURELY GROUNDED, AND ELECTRICAL CABLES CONNECTED TO ANTENNAS HAVE LIGHTNING ARRESTORS. This will help prevent fire damage or human injury in case of lightning, static build-up, or short circuit within equipment connected to the antenna.

- I The base of the antenna mast or tower must be connected directly to the building protective ground or to one or more approved grounding rods, using 1 OAWG ground wire and

corrosion-resistant connectors.

- I Refer to the National Electrical Code for grounding details.

IF A PERSON COMES IN CONTACT WITH ELECTRICAL POWER, AND CANNOT MOVE:

- I **DON'T TOUCH THAT PERSON, OR YOU MAY BE ELECTROCUTED.**
- I Use a non-conductive dry board, stick or rope to push or drag them so they no longer are in contact with electrical power.

Once they are no longer contacting electrical power, administer CPR if you are certified, and make sure that emergency medical aid has been requested.

Chapter 3 PLANET Outdoor WLAN

Management System

3.1 Introduction

The bundled PLANET Outdoor WMS (WLAN Management System) is a powerful utility for managing WAP-5000. This utility is fully compatible with the industry-standard Simple Network Management Protocol (SNMP). A powerful auto-discovery algorithm is built into WMS. With a simple click on the Auto Discovery icon, all compatible devices within the subnet will be discovered. This discovery feature is based on the following techniques:

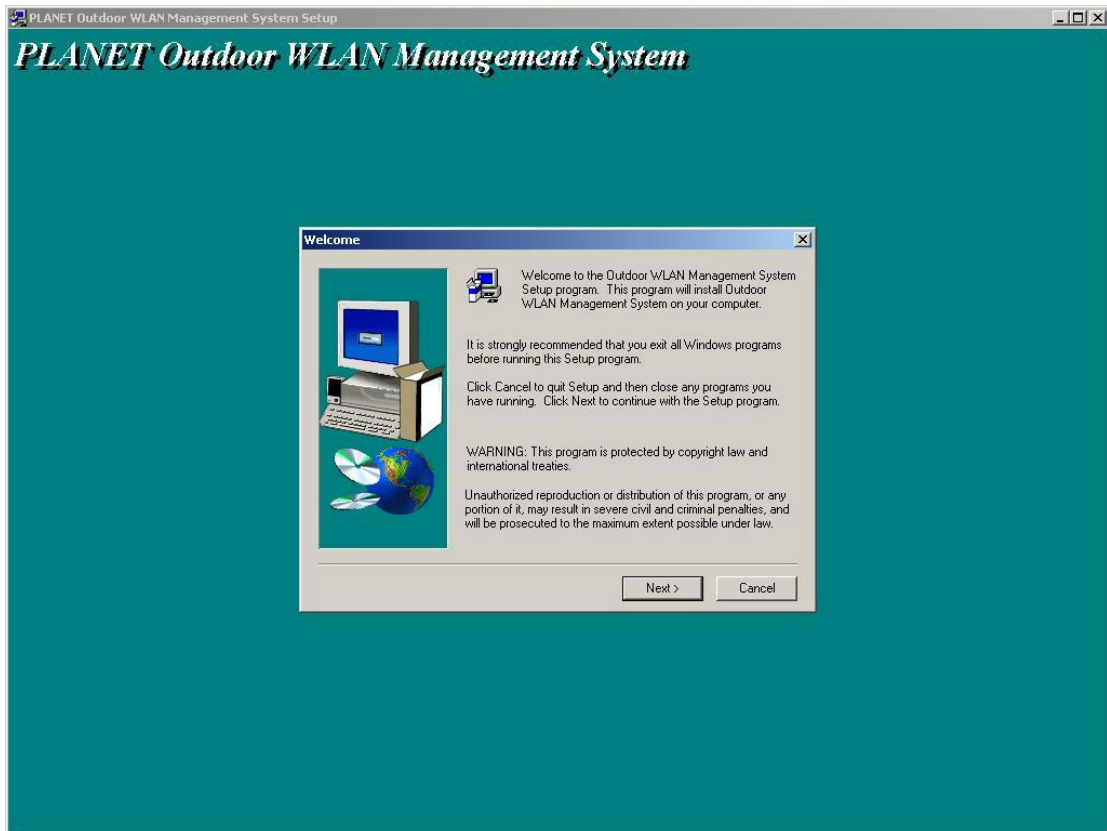
- **DHCP client and IP recovery:** The WAP-5000 has a built-in DHCP client, and will request an IP address from a DHCP server so that SNMP management can be carried out. Should there be a failure of the DHCP server, the WAP-5000 will auto-assign itself an IP address (see next) and then automatically negotiate for a new IP address when the server recovers.
- **Auto-IP:** When the WAP-5000 cannot get an IP address from a DHCP server, it will auto-assign itself an IP address of 169.254.x.x and a subnet mask of 255.255.0.0. A Windows-based system configured as a DHCP client will use the same algorithm to assign itself an IP address in the same subnet. When the DHCP server comes back on line, users may need to renew their stations' IP settings; otherwise, Windows may continue to use the previous IP address instead of executing the auto-IP procedure.

3.2 Installation

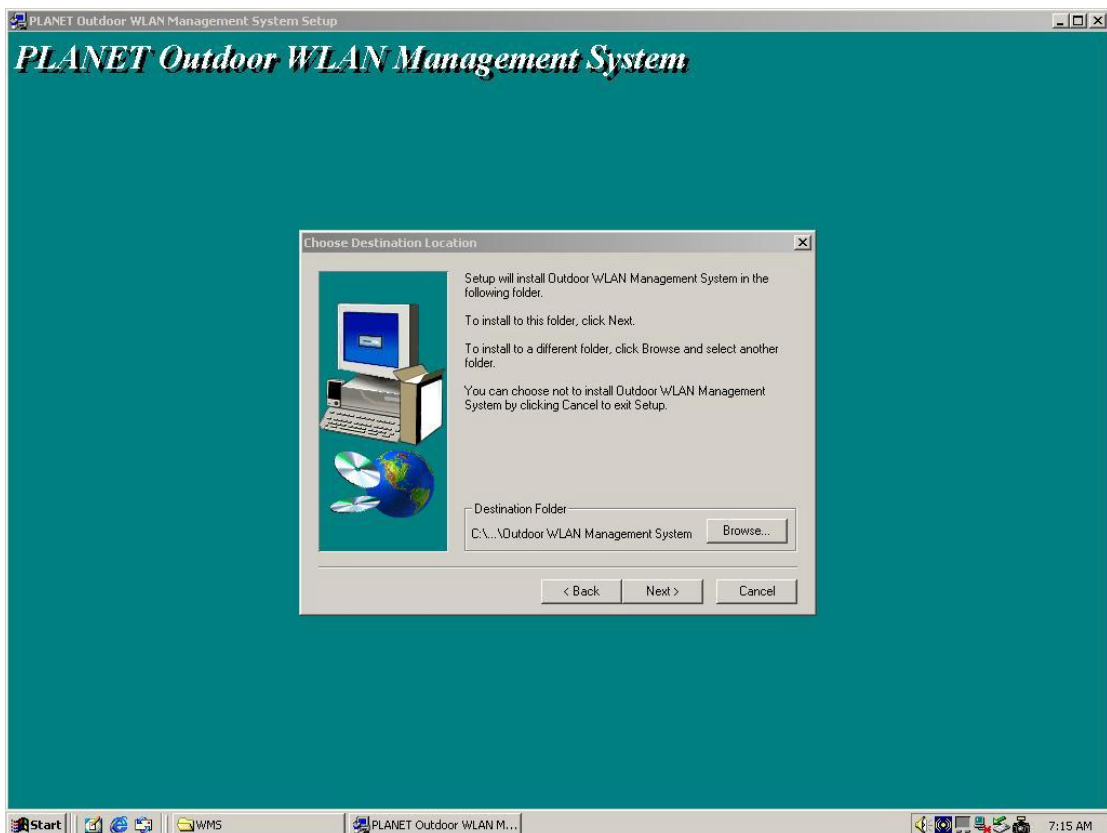
1. Insert the bundled CD in the CD-ROM drive to initiate the autorun program. Click on the "PLANET Outdoor WLAN Management System" hyperlink to activate the program.

Or you can start the installation as follows.

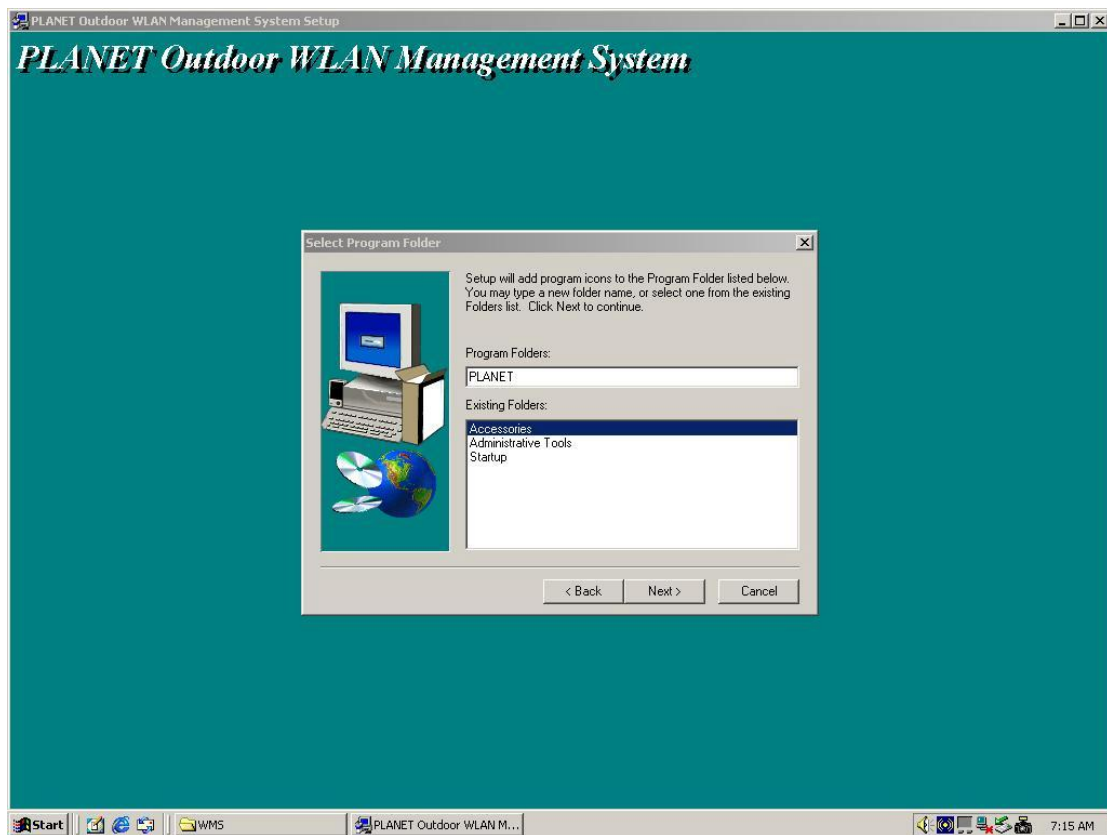
- A. Click on **Start Menu/ Run**.
 - B. Enter "E:\UTILITY\Setup.exe" in the appeared box, where "E" is the letter of your CD-ROM drive.
 - C. Click on "OK" button.
2. A Welcome window will appear as below. Please click "Next" to continue.



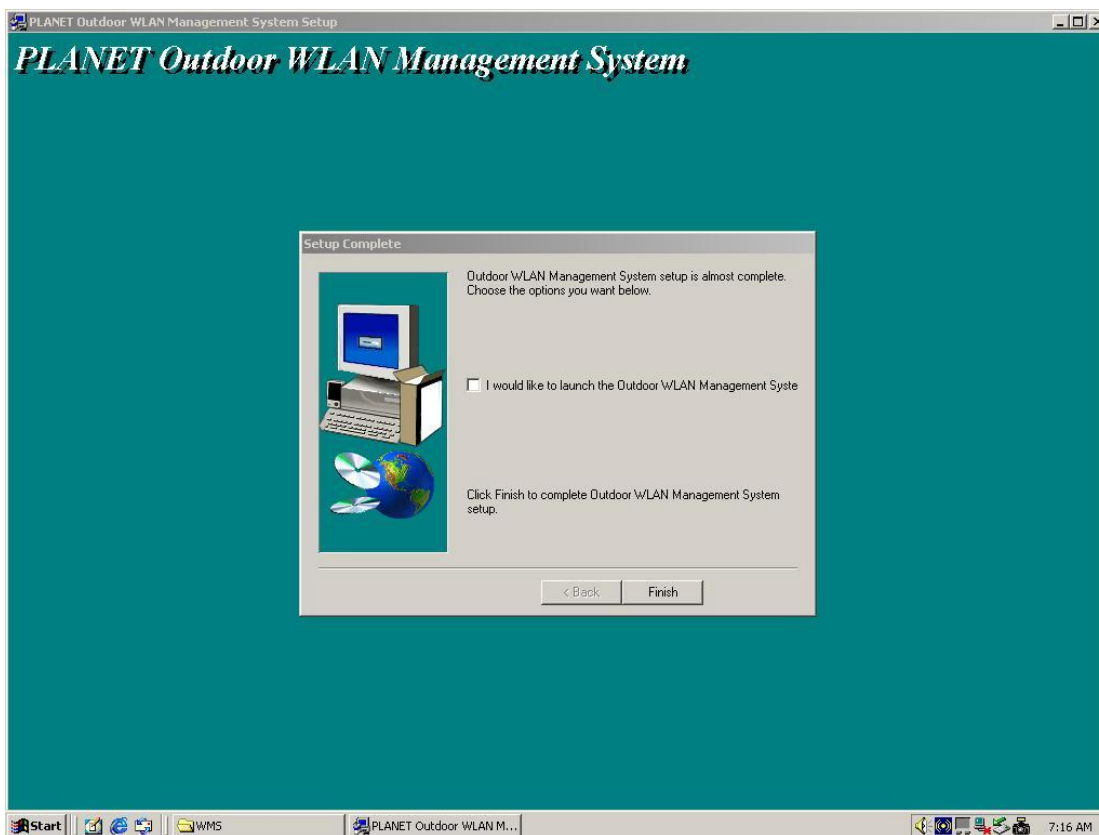
3. You can click "Browse" to specify the Destination Folder that you want to install the utility. Or you can keep the default setting and click "Next" to continue.



4. Click "Next" to continue.



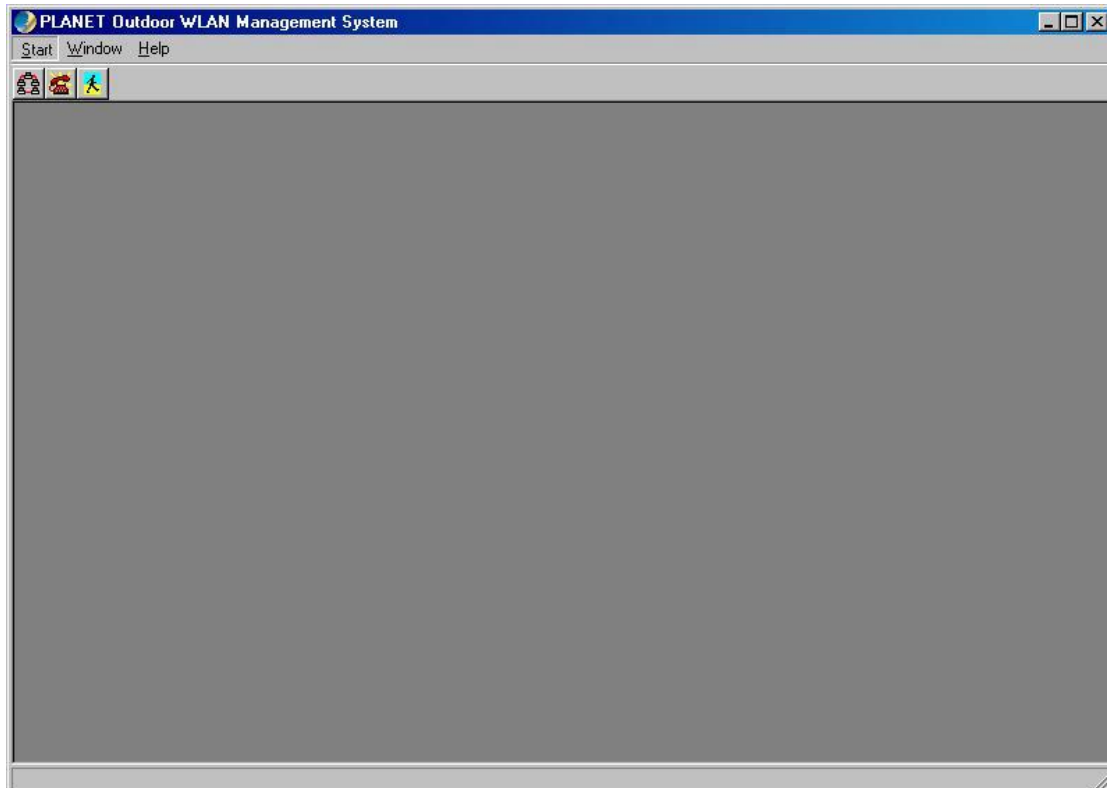
5. The setup will start to copy necessary files to your computer. When the Setup Complete window appears, click "Finish" to complete the software installation.




3.3 Using PLANET Outdoor WMS

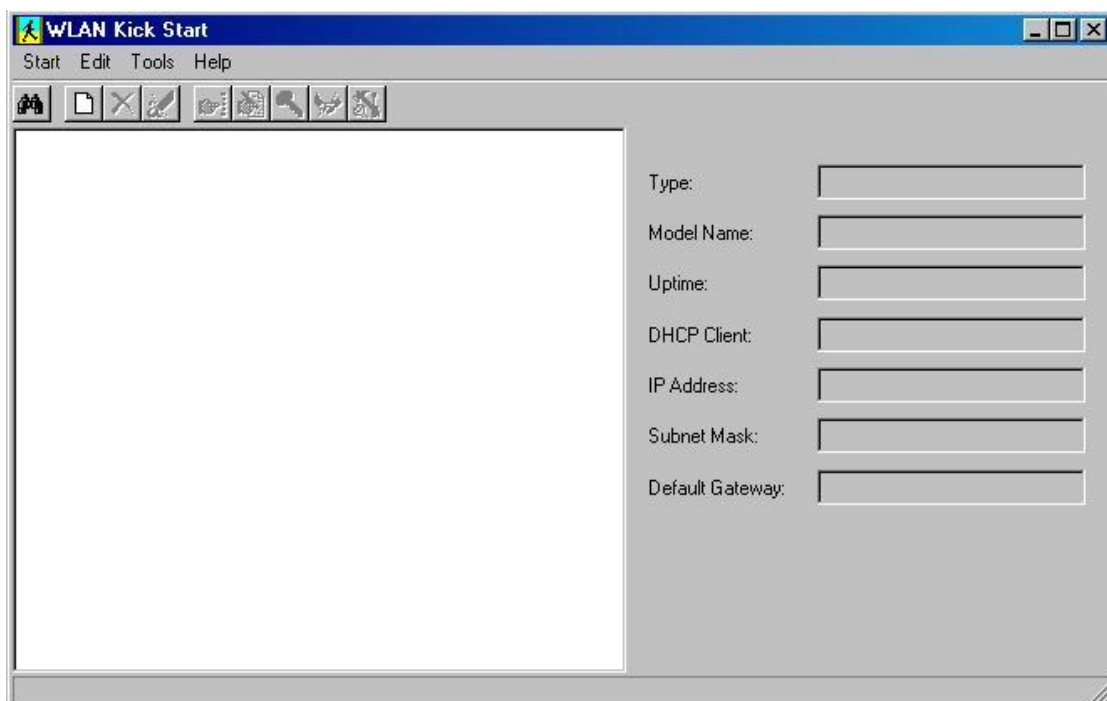


After successfully installing the utility, you can find the icon on your desktop. To activate WMS, you can double click this icon or click **Start > Programs > PLANET > PLANET Outdoor WLAN Management System**. The main **WMS** window will then open.




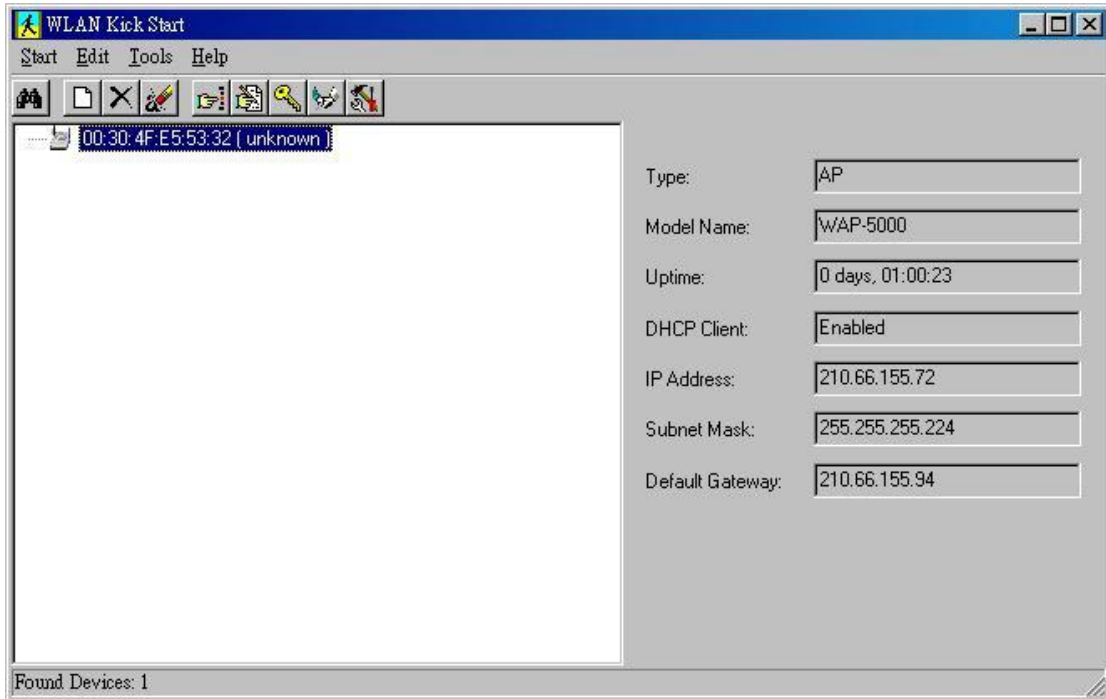
3.3.1 Kick Start

It is recommended to use **Kick Start** function when initial setting up a WAP-5000. Open **Start** menu and select **Kick Start**, or click on the icon  from the main **WMS** window, then the **Kick Start** window appears as below.



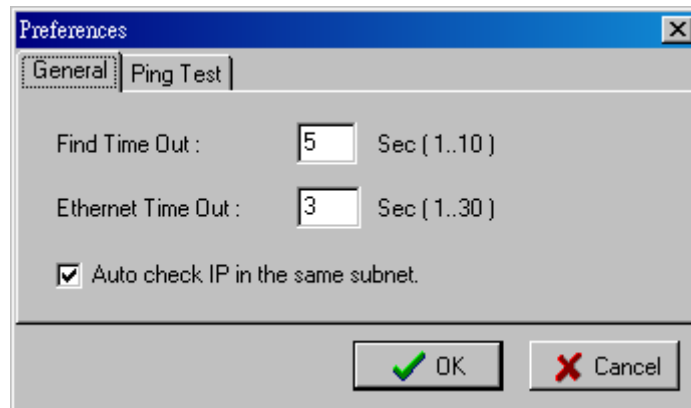
3.3.1.1 Find

This function helps you to quickly locate all compatible devices (include AP and Bridge). Open the **Start** menu and select **Find**, or click on the icon , or press **F5**. Few seconds later, the MAC addresses of all compatible devices will be listed below. If you select a specific device from the left field, its detailed settings will be shown in the right field.




3.3.1.2 Preference

You can set the parameters for the **Kick Start** as desired. Open the **Start** menu and select **Preference**, a dialog box will appear as below. After completing desired modifications, click **OK** to close the dialog box and apply the changes to **Kick Start**.

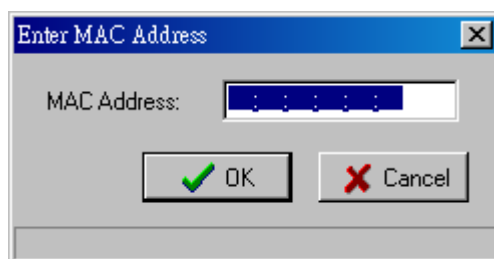


3.3.1.3 New


If the MAC address of the device is already known, you can use this function to connect it directly.

Open the **Edit** menu and select **New**, or click on the icon , a dialog box will pop up. Enter the


MAC address of the device and click **OK** to make the connection.




3.3.1.4 Delete

If you want to remove a specific device from the list, select its MAC address, open the **Edit** menu and select **Delete**, or click on the icon . The device will disappear from the list immediately.


3.3.1.5 Delete All

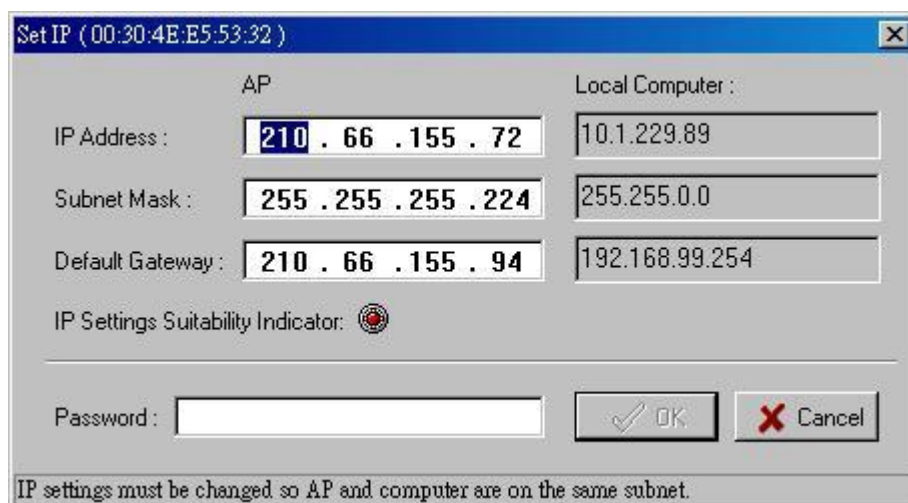
It is the similar function as **Delete**. Open the **Edit** menu and select **Delete All**, or click on the icon , all devices will be removed from the list immediately.

3.3.1.6 Ping Test


You can use this function to test the IP connectivity between the administrative PC and a specific device. Select the MAC address of the device you want to test from the list, open the **Tools** menu and select **Ping Test**, or click on the icon , the test will be executed right away. A dialog box will pop up to inform you whether the test passes or not. If the test fails, please make sure your administrative PC and the device are in the same IP segment.

3.3.1.7 Change IP Settings

This function allows you to change the IP address of a specific device. Highlight the MAC address of the device from the list, open the **Tools** menu and select **Change IP Settings**, or click on the icon , a dialog box will pop up as below. Please note the modified IP address must be in the same subnet as Local Computer; otherwise the **OK** button remains unavailable. The default password of WAP-5000 is **admin**.




3.3.1.8 Change Password


This function allows you to change the administrative password of the device. Highlight the MAC address of a device from the list, open the **Tools** menu and select **Change Password**, or click on the icon , a dialog box will pop up. Type the Old Password, New Password, and confirm New Password again, then click **OK** button to close the box and apply the changes to the device.



3.3.1.9 Reboot


This function allows you to reboot the device without unplugging its power adapter. Highlight the MAC address of a device from the list, open the **Tools** menu and select **Reboot**, or click on the icon , a dialog box will pop up and ask for the administrative password. Type in the correct password, then click **OK** button to close the box and reboot the device.

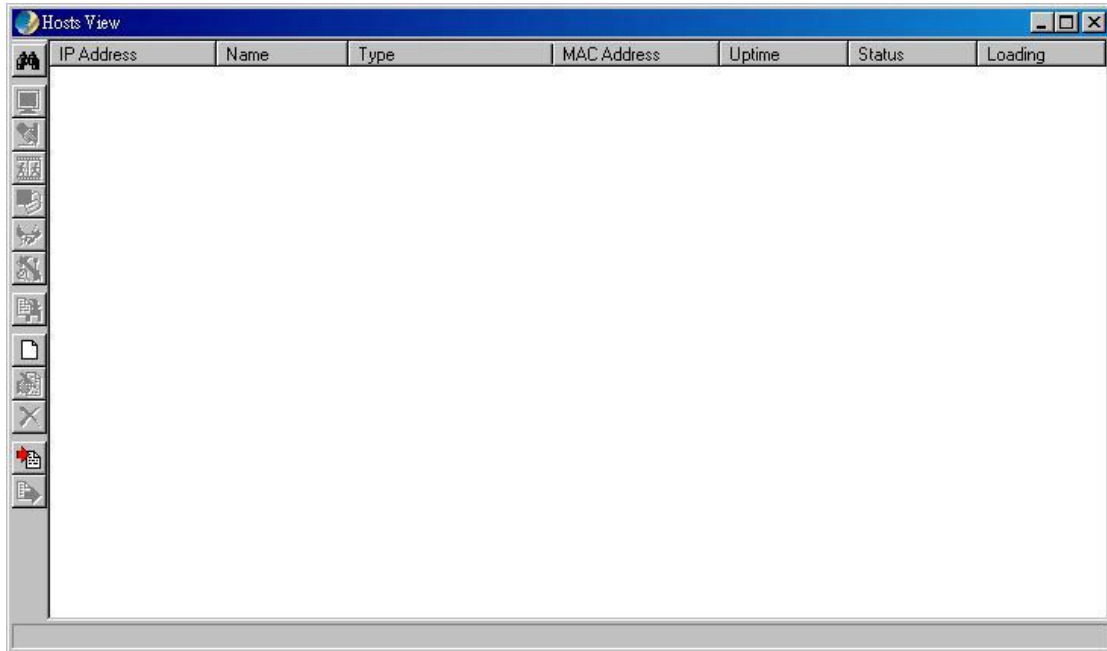
3.3.1.10 Restore Default

This function allows you to restore default settings of the device. Highlight the MAC address of a device from the list, open the **Tools** menu and select **Restore Default**, or click on the icon , a dialog box will pop up and ask for the administrative password. Type in the correct password, then click **OK** button to close the box and restore default settings.


3.3.2 Hosts View

Hosts View is the major part of the **WMS**. It supports not only individual remote management, but also batch mode operation, including multi-monitor, batch upgrade, batch reset, and batch load default settings. Batch mode operation can efficiently reduce administrative efforts when deploying multiple WAP-5000s.


Open **Start** menu and select **Start Hosts View**, or click on the icon  from the main **WMS** window, then the **Hosts View** window appears as below.

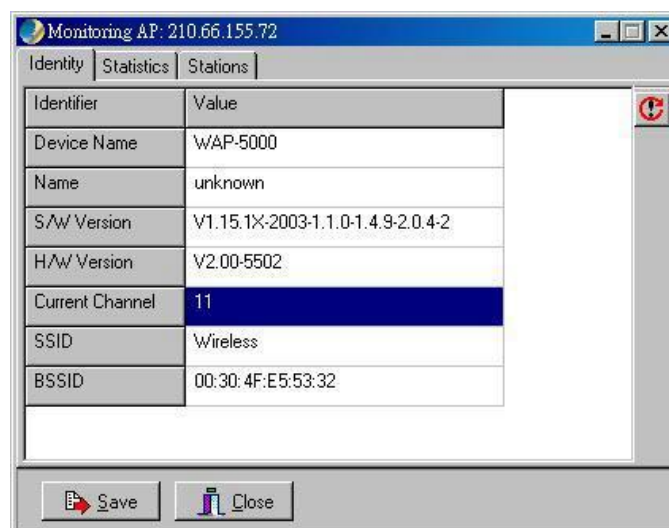


3.3.2.1 Auto Discovery

This function helps you to quickly locate all compatible devices in the same IP subnet as the administrative PC. Open the **Host** menu and select **Auto Discovery**, or click on the icon , or press **F5**. Few seconds later, all compatible devices will be listed below with their information.

3.3.2.2 Monitor Device

This function allows you to view the status, statistics, and other configuration information of WAP-5000. Open the **Host** menu and select **Monitor**, or click on the icon , a monitoring window will pop up as below.





Identity

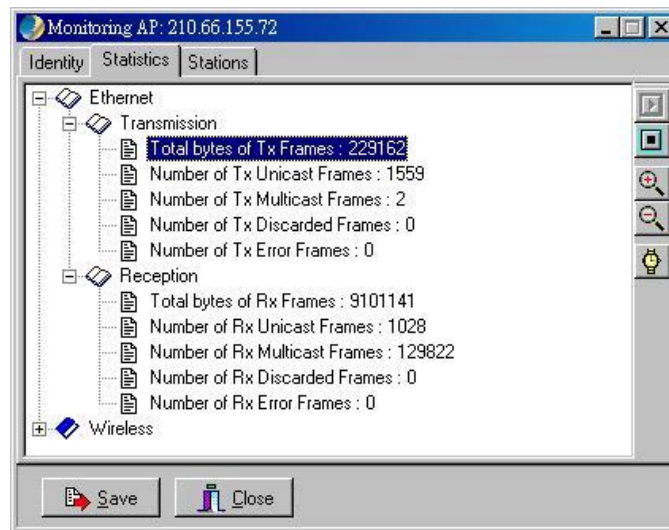
The information shown here is read-only.

- Device Name: WMS system default category name
- Name: Device name assigned by the user for easier identification
- S/W Version: Shows the device software version number
- H/W Version: Shows the device hardware version number
- Current Channel: Shows the wireless channel currently in use on the device
- SSID: Shows the SSID of the device
- Current BSSID: Shows the BSSID of the device (same as the device MAC address)

Statistics

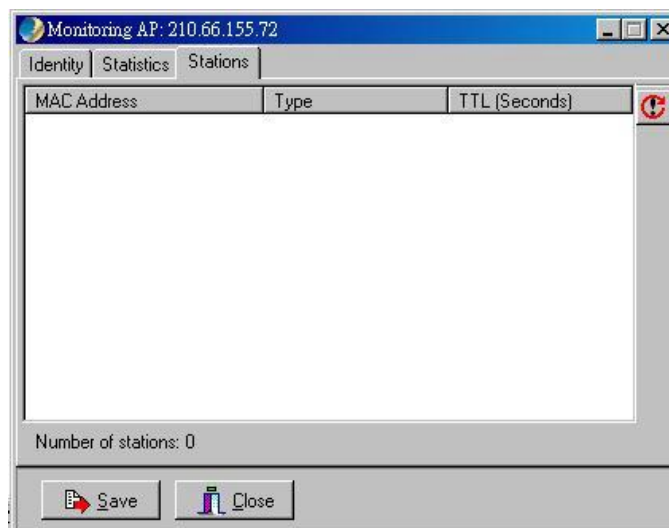
The **Statistics** window shows both Ethernet and Wireless traffic statistics.

Click the icon  to start getting the statistics, and click the icon  to stop.



Stations

The **Stations** window lists the information of all currently connected wireless stations.



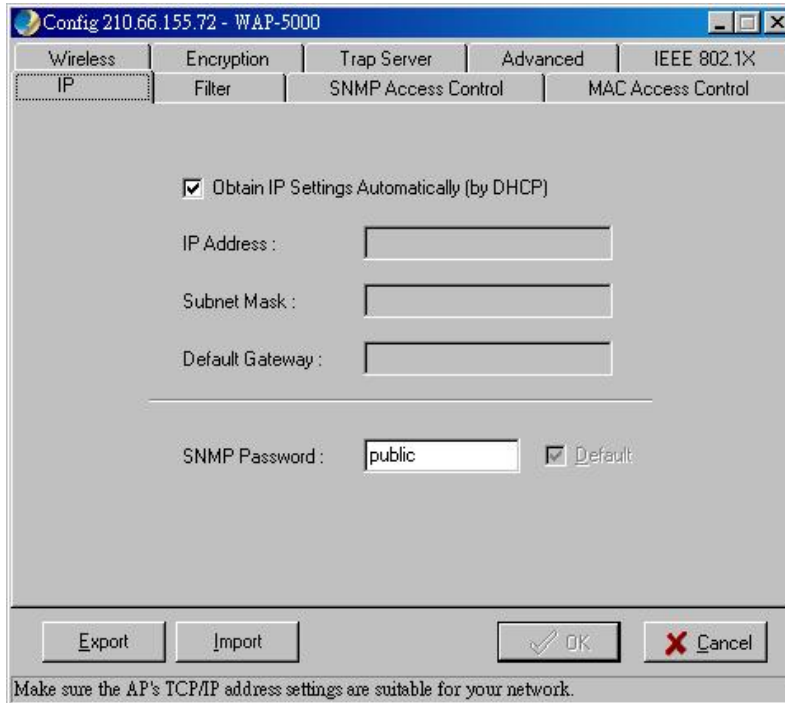
3.3.2.3 Config

This function allows you to configure the parameters of WAP-5000. Open the **Host** menu and select

Config, or click on the icon , a configuration window will pop up.

IP

WAP-5000 is a DHCP client by default. It will automatically ask the DHCP server for IP address. If you want to assign static IP to WAP-5000, please clear the check box in front of **Obtain IP Settings Automatically (By DHCP)**. Please note WAP-5000 will directly transfer SNMP response packets (confirmation packets) to an administrative PC if it is within the same network segment (the same subnet mask). If an SNMP response packet from a WAP-5000 is destined for an administrative PC on another LAN, the SNMP response packet needs to be forwarded by routers. The default gateway is the closest router to the WAP-5000. If the correct default gateway is set, you can use a WMS manager (i.e. a PC running WMS) physically located in a different subnet to manage this WAP-5000.



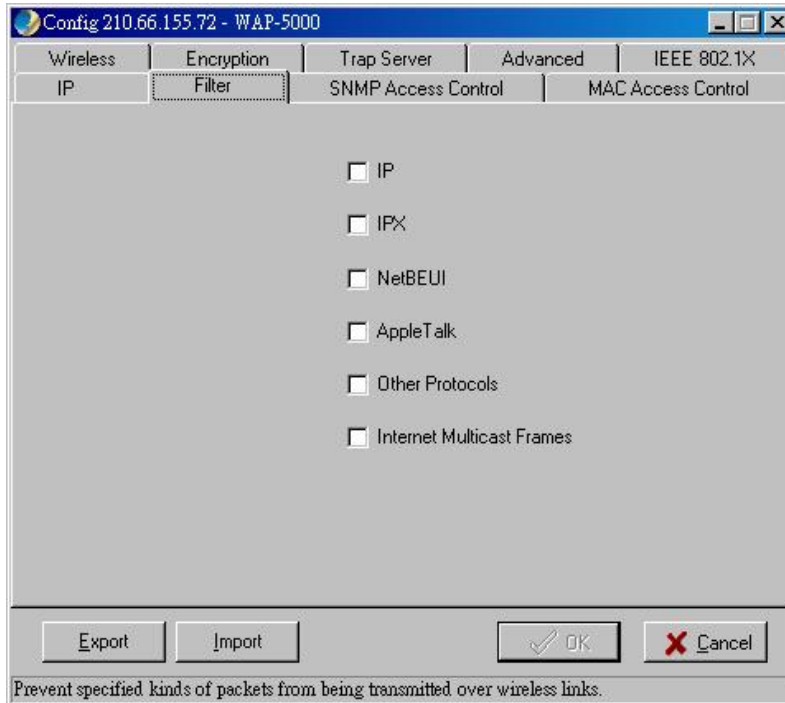
Filter

This is a one-way protocol filtering mechanism that prevents the WAP-5000 from transmitting specified protocols packet from a wired Ethernet LAN into the wireless LAN. If you do not require particular protocols on the wireless part of your network, you can save bandwidth by enabling the protocol filter.

From the **Filter** window, there are six protocols listed may be selected for filtering out:

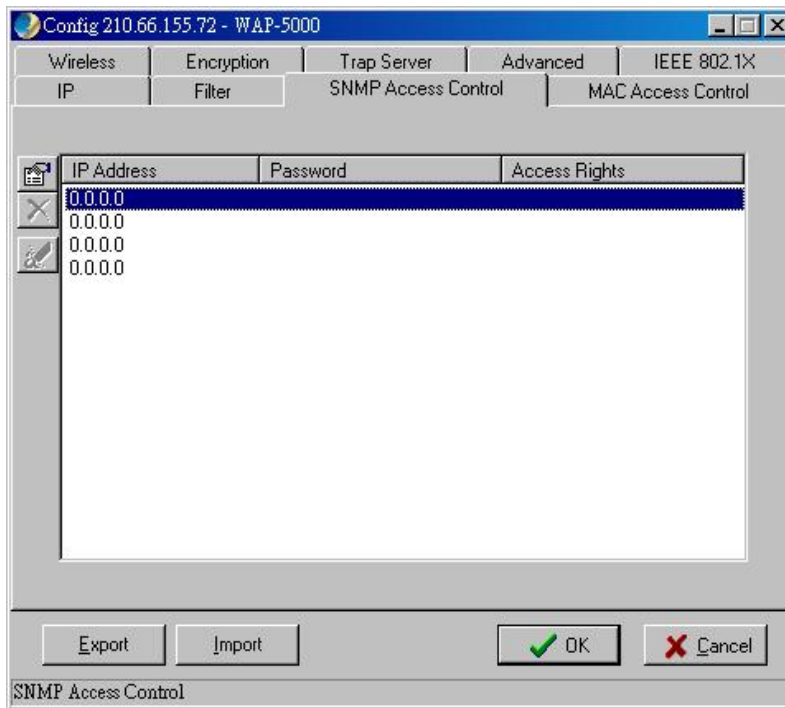
- IP Protocol
- IPX Protocol

- NetBEUI Protocol
- AppleTalk Protocol
- Other Protocols
- Internet Multicast Frames



SNMP Access Control

WAP-5000 contains an SNMP access table to limit access to its configurations. By default there is no restriction on accessing the AP. For security reason, access to WAP-5000 configuration should be restricted to only those who require access.



When you select **SNMP Access Control**, the system will display four blank fields for setting (maximum of 4 SNMP devices can be set). Right-click on a blank in the list and click **Edit Address**. The **New/Edit Address** dialog box will appear. Type in the IP address and set the password for the SNMP device. There are two levels of access rights can be assigned:

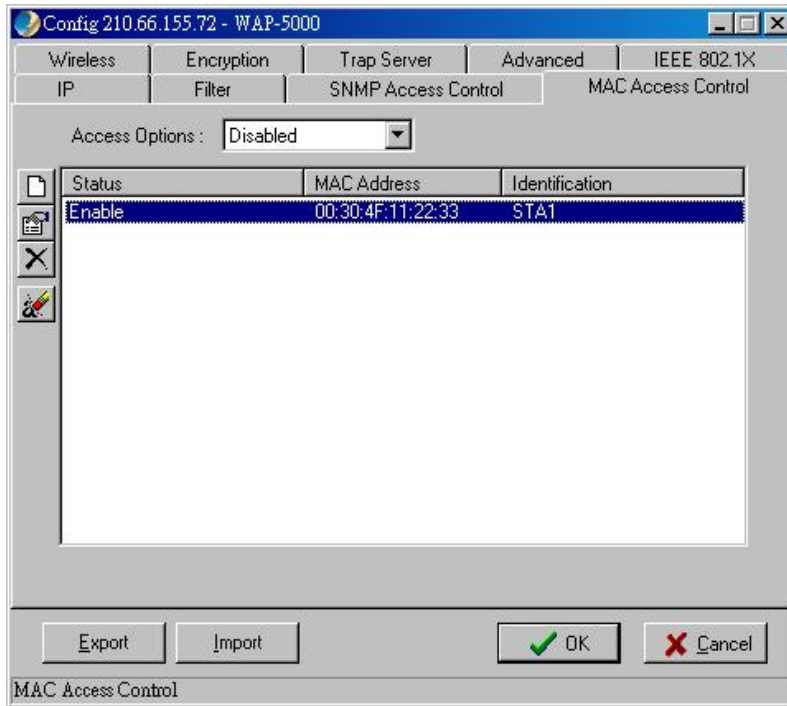
- **Read:** The user can read all information except the **Access Control** settings, but is not allowed to alter anything.
- **Read/Write:** The user can read and change all settings.


Please note do not set all SNMP devices in the table to Read only; otherwise the WAP-5000 is impossible to be modified. The only solution is to reset the device back to factory defaults by using **Kick Start**.

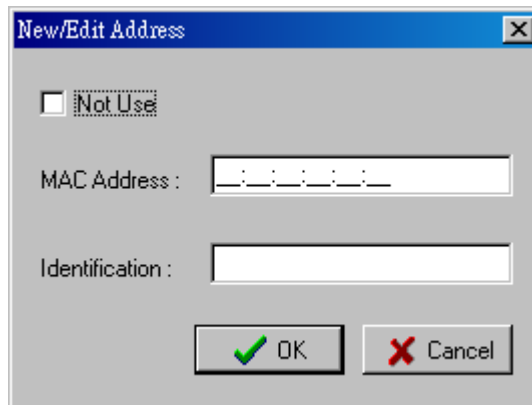
MAC Access Control

You can restrict the wireless connection of WAP-5000 by using **MAC Access Control**. There are up to 1000 stations can be granted or denied access. There are three **Access Options** can be selected:

- **Disabled:** Disable the MAC Access Control. This is the default setting.
- **Accepted List:** Wireless stations with MAC addresses on the list are allowed to access WAP-5000.
- **Denied List:** Wireless stations with MAC addresses on the list are prohibited to access WAP-5000.

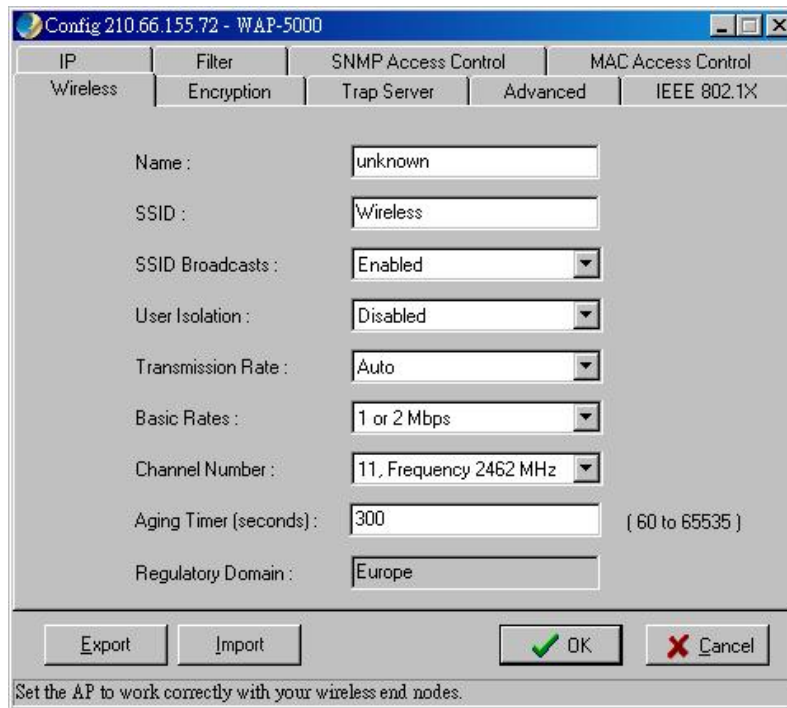


To add a wireless station to the list, click on the icon  and a dialog box will pop up. Type in the MAC address of the wireless station and its identification description (7 characters maximum). Wireless stations registered in the **MAC Address Control** Table can be individually turned on or off. For example, if you have enabled the **Accepted List** option, you can check the **Not Use** box for any listed station; the status of this station will be displayed as Disable, and the WAP-5000 will then refuse all connection attempts from that station.



Wireless

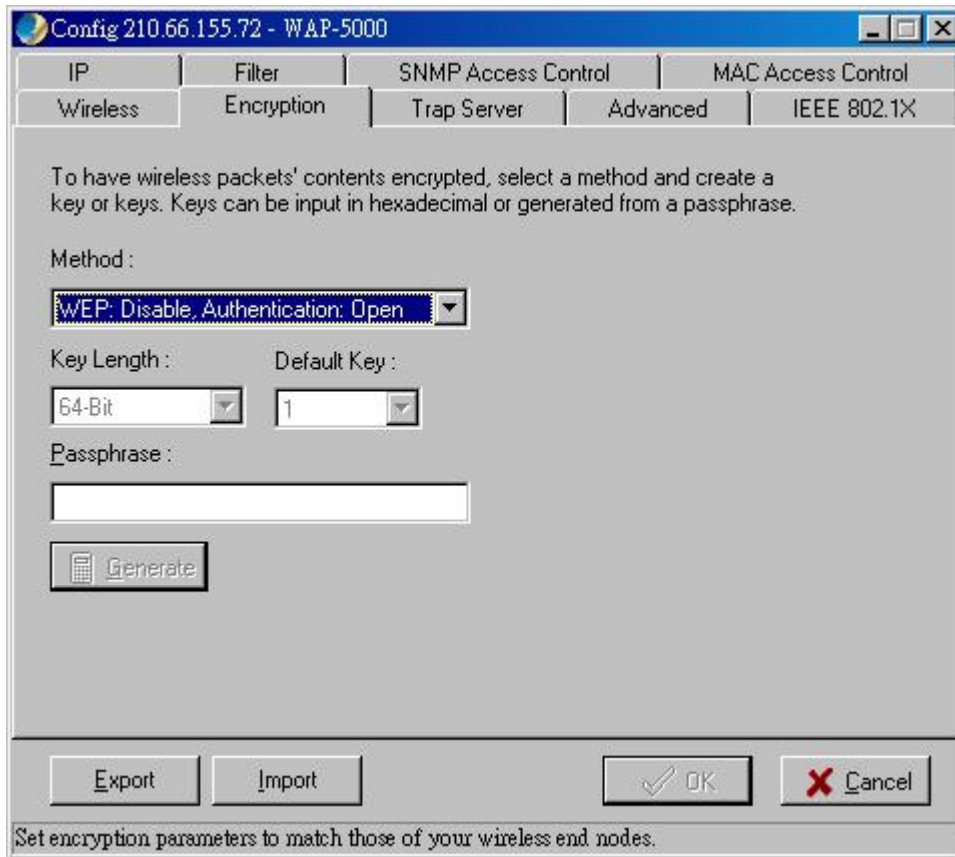
The **Wireless** window allows you to configure wireless settings of WAP-5000.



- **Name:** Assigns the WAP-5000 a unique name that allows the AP to be easily identified on the network.
- **SSID:** The SSID is the name shared among all points in the wireless network. You can type an existing domain name or create a new one that contains up to 32 characters.
- **SSID Broadcasts:** Click to enable or disable the SSID Broadcasts feature. If disabled, the WAP-5000 would block any connection request from stations without the correct SSID and hide the SSID in outgoing beacon frames. A site-survey tool will not find the SSID.
- **User Isolation:** Enable this option, any wireless client cannot detect another wireless client in the same wireless network. It can give full privacy for clients under public access environment.
- **Transmission Rate:** Sets the transmission rate of the WAP-5000. In high-interference environments a lower rate can increase overall transmission speed by reducing resends of lost packets.
- **Basic Rates:** This value determines the basic rates used and reported for this BSS by the WAP-5000. The highest rate specified is the rate that the WAP-5000 will use when transmitting broadcast/multicast and management frames.
- **Channel Number:** You can change the channel used by the WAP-5000 from here. If the **Automatically** option is selected, the WAP-5000 will choose an available radio channel automatically.
- **Aging Timer (seconds):** The expiration time for wireless station without activity.
- **Regulatory Domain:** Identifies the Regulatory Domain where the WAP-5000 is used. Each country has defined its available channel numbers and transmission power.

Encryption

Click the **Encryption** tab to set up the security settings of WAP-5000.



There are four selectable options in **Method** pull-down menu:

- **WEP: Disable, Authentication: Open** – Disable data encryption
- **WEP: Enable, Authentication: Open** – Enable data encryption and use Open System authentication (wireless clients' requests to join the network must not be WEP-encrypted)
- **WEP: Enable, Authentication: Shared** – Enable data encryption and use Shared Key authentication (such requests must be WEP-encrypted)
- **WEP: Enable, Authentication: Both** – Enable data encryption and use both Open System and Shared Key authentication (all requests are processed)

If data encryption is enabled, there would be two available options in **Key Length** menu:

- **64-bit**
- **128-bit**

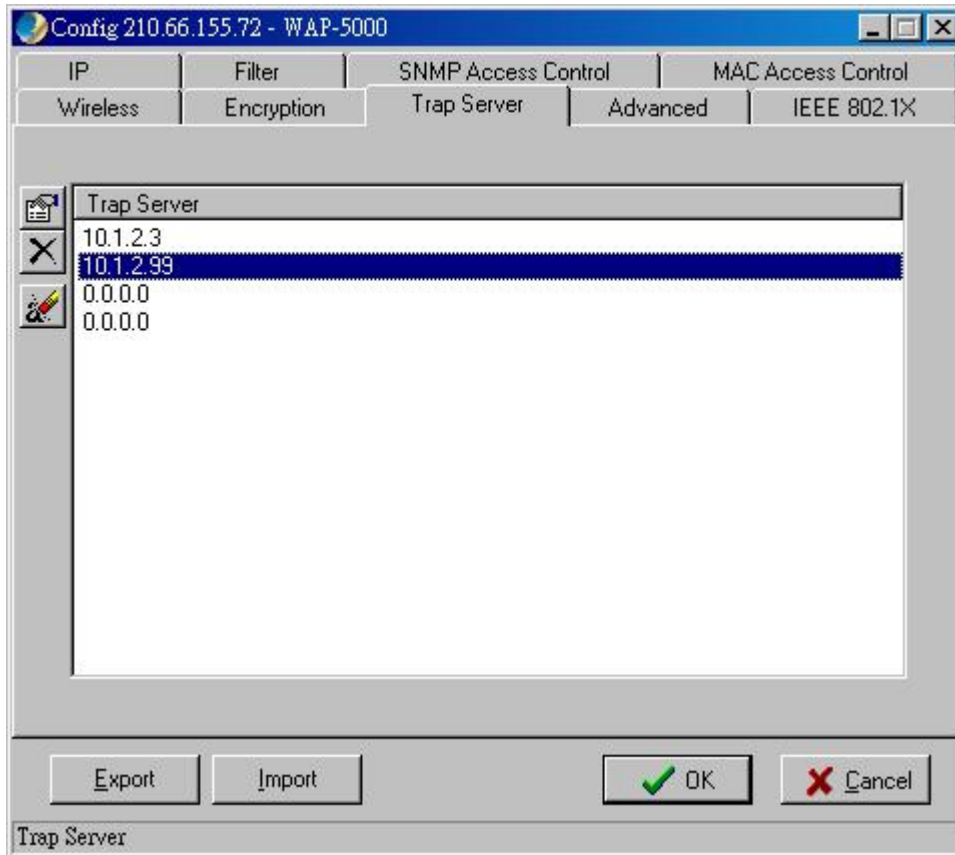
There are two ways to generate a security key. The first is by entering any text in the Passphrase field. Click the **Generate** button. For 64-bit WEP, it will generate four keys, Key 1, Key 2, Key 3, and Key 4. Select a key number from the dropdown list of the **Default Key** box. If you do not manually select a key, key 1 will be selected. For 128-bit WEP, only one key will be generated. Click **OK**.


Another WEP key generation method is to insert the key values directly from the keyboard. Enter your own key into one of the Key 1~4 fields. Select that field number in the **Default Key** field.



Trap Server

When the WAP-5000 is powered on, or an Ethernet port becomes active, an event log will be generated indicating the time, the IP address of the reporting WAP-5000, and the event. You can

view and save the event logs from the station as a Trap Server. To assign a trap server, click **Trap Server** tab.

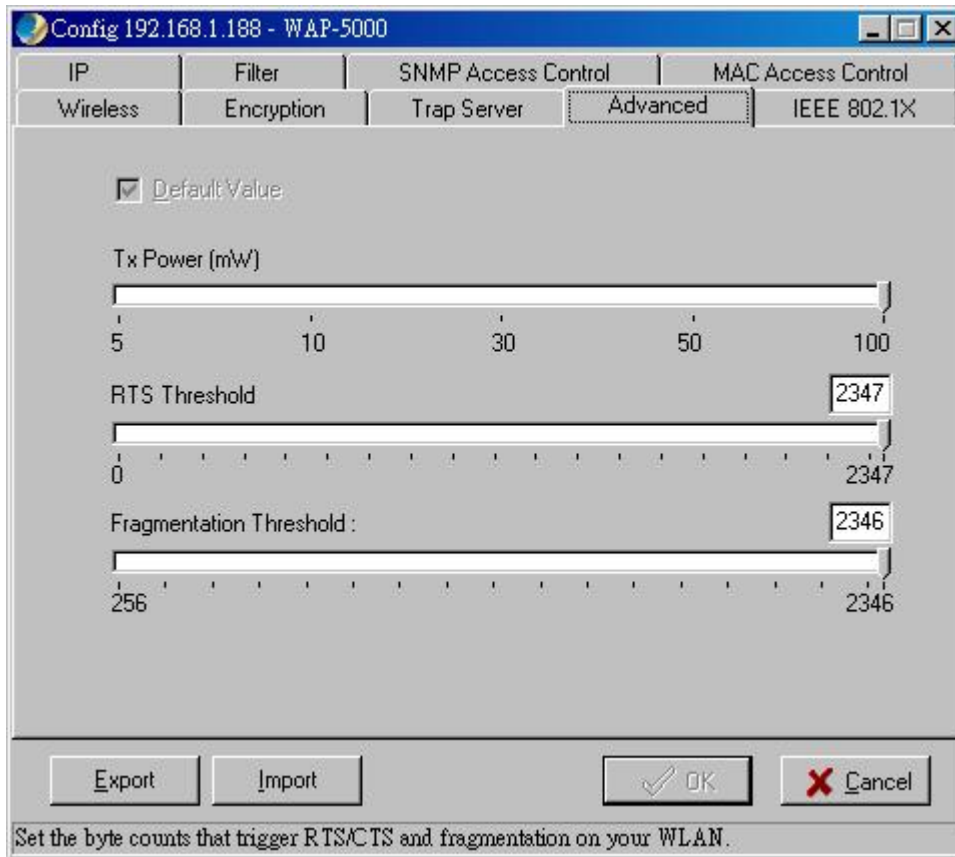


Click the icon  and assign a station as a trap server by entering its IP address.

To remove a trap server from the list, highlight it and click the icon . Click the icon  to remove all assigned trap servers from the list.

Advanced

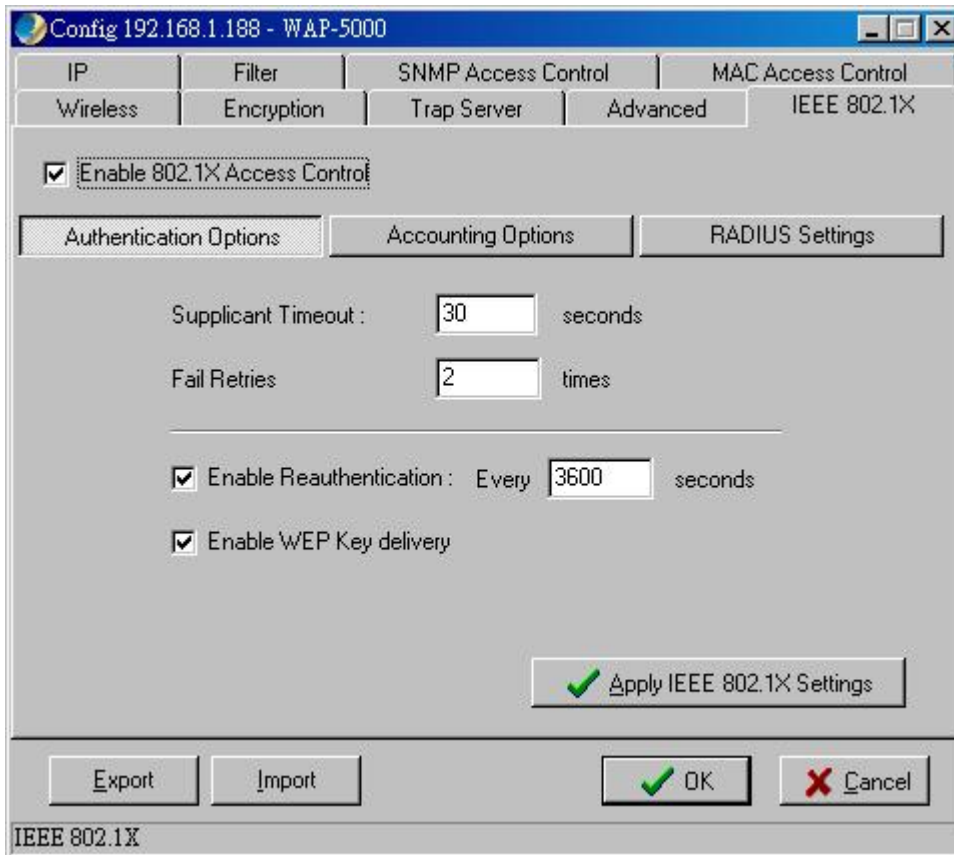
You may set the packet size of **RTS Thresholds** and **Fragmentation Thresholds** in the **Advanced** window. The window also contains a **Tx Power (mW)** control with options for setting the AP's transmit power to 5, 10, 30, 50, or 100 mW.



IEEE 802.1X

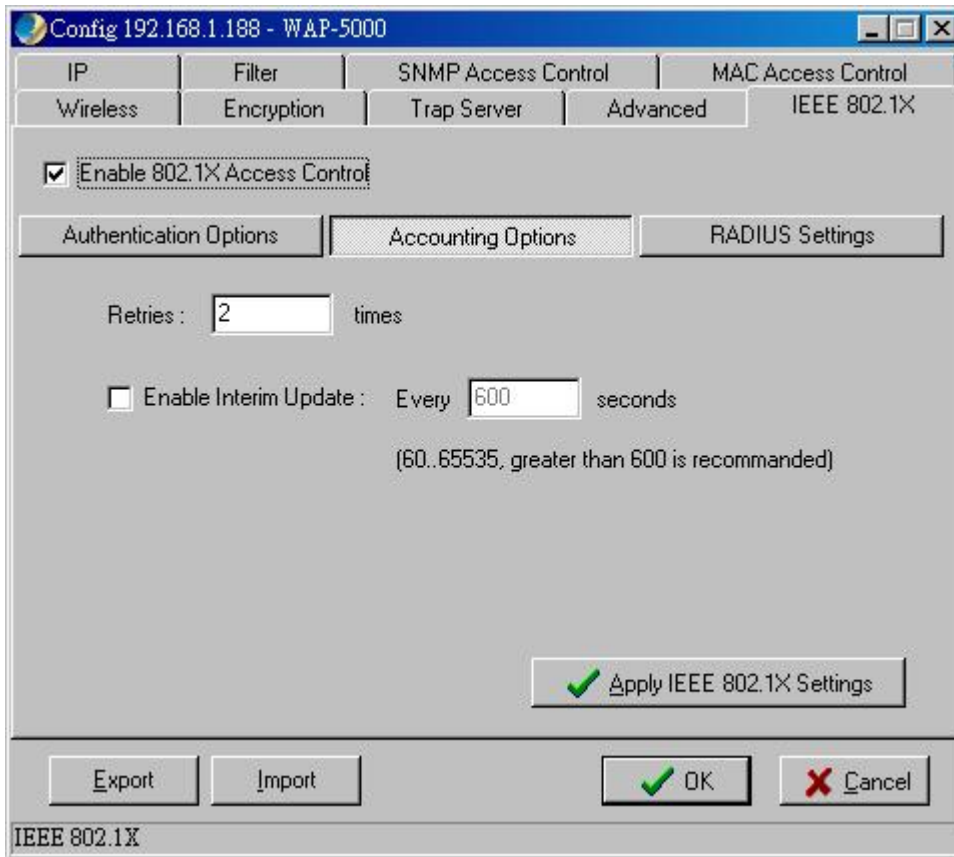
The **IEEE 802.1X** window allows you to set up 802.1x authentication on a WAP-5000. Check **Enable 802.1X Access Control** box will activate the three subcategories of IEEE 802.1x related controls: **Authentication Options**, **Accounting Options**, and **RADIUS Settings**.

Authentication Options



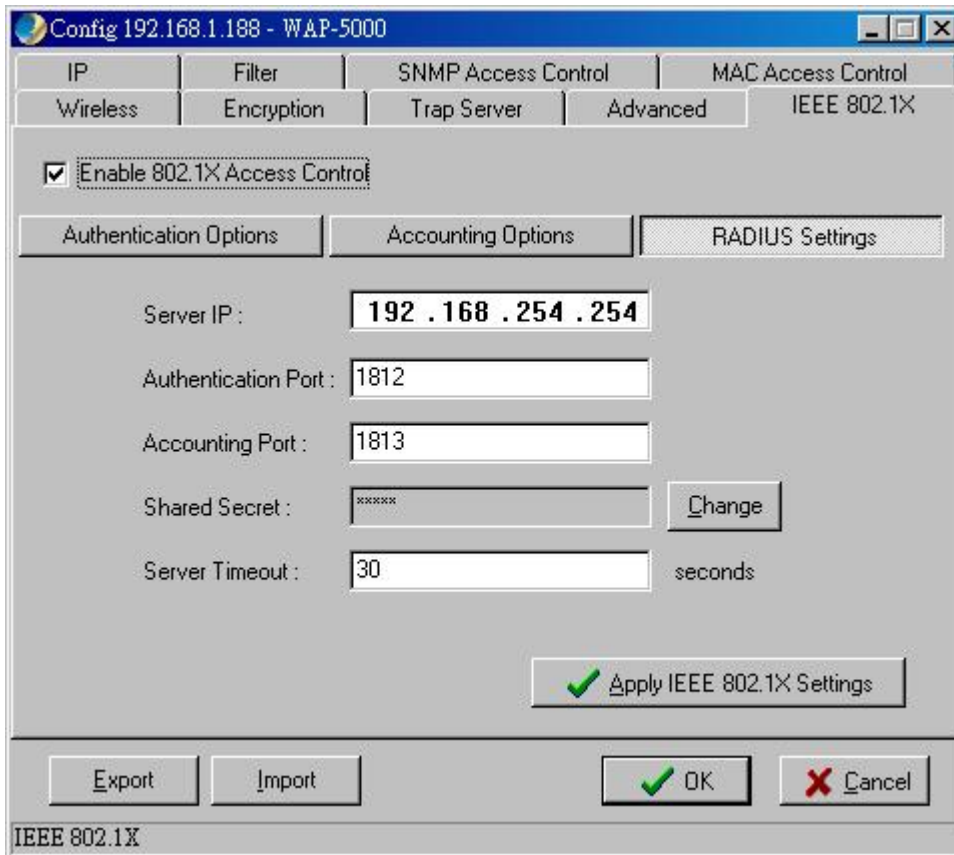
- **Supplicant Timeout** – This control sets the maximum time that the AP will wait for an authentication response from a client. Once this limit has been reached, the AP will check how many times it has tried.
- **Fail Retries** – This is the number of times the AP will restart the authentication process with the client before returning an error.
- **Enable Reauthentication** – If this control is checked, the AP will re-initiate authentication whenever the specified amount of time has expired.
- **Enable WEP Key Delivery** – If this control is checked, the AP will pass the WEP key to the client after the authentication procedure has finished. This only applies when the AP has WEP enabled, EAP-TLS is being used on the RADIUS server as the authentication method, and the supplicant has been authenticated with the RADIUS server.

Accounting Options



- **Retries** – This is the number of times the AP will attempt to resend accounting information to the server before returning an error.
- **Enable Interim Update** – If this control is checked, the AP will periodically resend any accounting information to the server.

RADIUS Settings

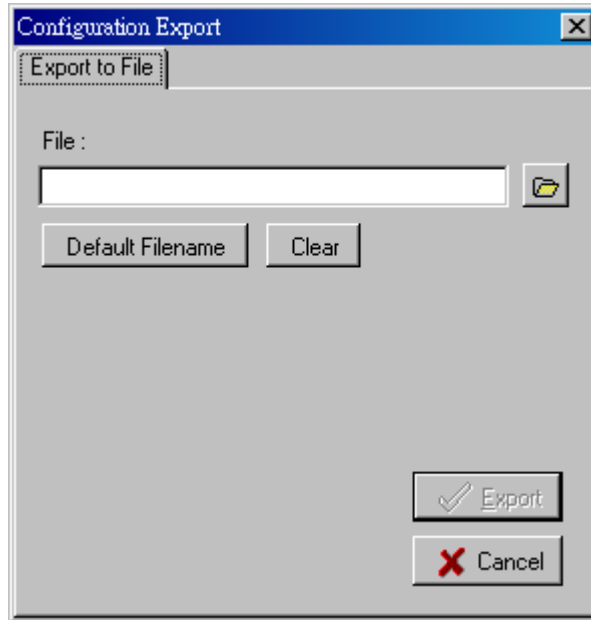


- **Server IP** – This is the RADIUS server’s IP address. This must be set in order for the AP to communicate with the server.
- **Authentication Port, Accounting Port** – These are the port numbers that the server is using to listen for incoming accounting and authenticating packets. These can be set manually on the server but must be set here as well. These are advanced options and the defaults will work without further configuration.
- **Shared Secret** – The shared secret is set on the server as part of the 802.1x protocol. It is a key used for encryption between the authenticator and the server. The key set here must be the same as the one set on the server, or the AP and the server will not be able to communicate.
- **Server Timeout** – This is the maximum time that the AP will wait for the RADIUS server to respond. If there is no response within this time, the AP will return an error.

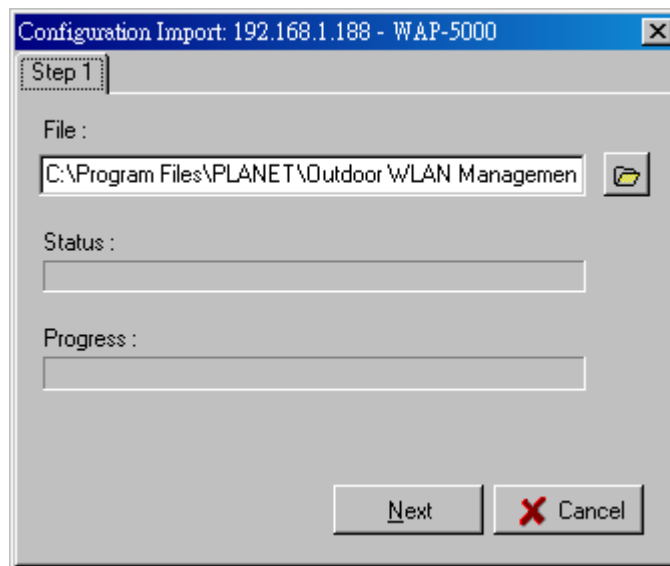
Click **Apply IEEE 802.1X Settings** button to turn on 802.1x support on the WAP-5000 immediately without reset. Once this is done, only authenticated traffic is allowed.

Export/Import Configuration Profile

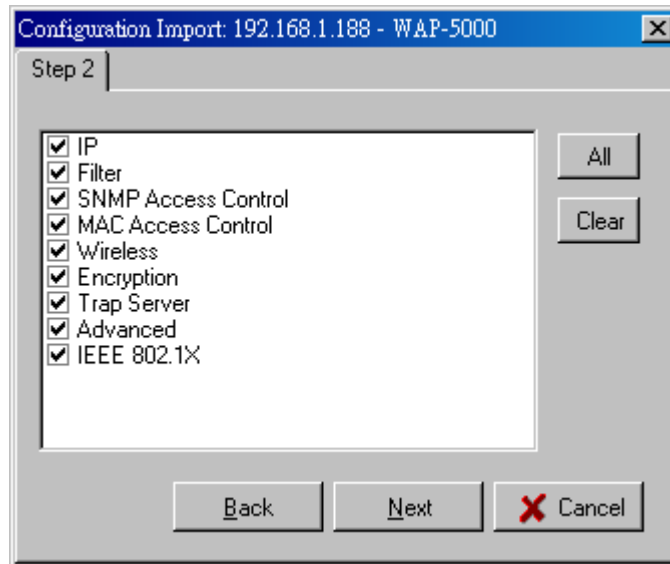
The configuration file can be saved to a text file and safely kept. This configuration file can also be imported to recover the WAP-5000’s setting, if there is an accident. This profile can also be copied to the other WAP-5000. To do this, first click the **Export** button in the **Config** window. Then enter the file name for the configuration profile to be saved to.



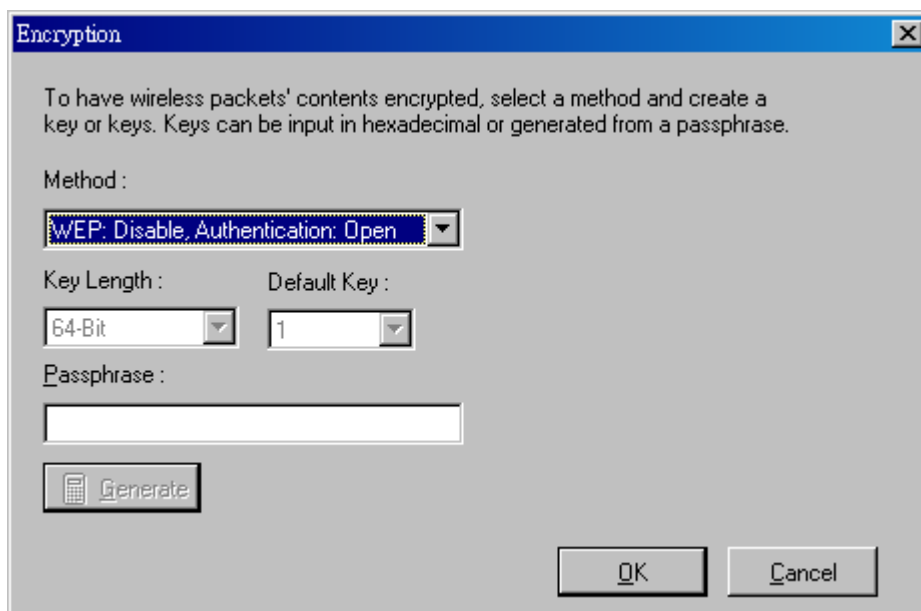
A configuration file can also be imported to recover the WAP-5000's original settings. This profile can also be copied to the other WAP-5000. To do this, first click the **Import** button in the **Config** window. Then enter the file name for the configuration profile to be imported from. Click **Next**.



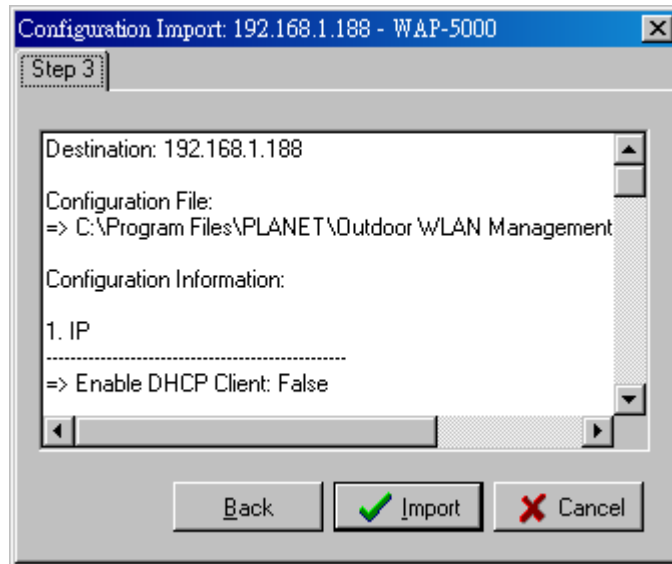
On **Step 2** screen, you can select or clear the sessions of the configuration profile to be imported. Click **Next**.




The configuration profile does not contain the security key settings. The attributes of security keys are externally write-only and cannot be saved into the configuration file. If you select **Encryption** session to be imported, it will display the **Encryption** window before Step 3 screen and ask you to enter the security key settings manually.




Confirm the configurations again in **Step 3** screen, then click **Import** button to start the process.




3.3.2.4 Restart

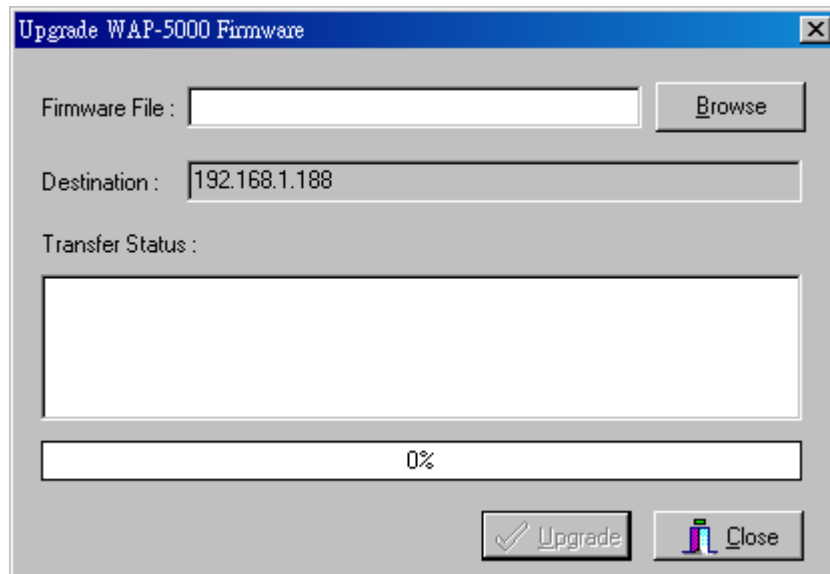
You can restart a selected WAP-5000 by opening the **Host** menu and select **Restart**, or click on the icon . A warning message will pop up for confirmation. Click **OK** button to restart the device. The restart process will take about 30 seconds. During this period, the **WMS** program will not be able to query the WAP-5000 via the SNMP protocol and the WAP-5000 will not be available to its client stations. If you try to access the device, the **WMS** program will display the message "Timeout! No response from agent."

3.3.2.5 Factory Reset


If you want to reset the WAP-5000 to its factory default settings, you can open the **Host** menu and select **Factory reset**, or click on the icon . A warning message will pop up for confirmation. Click **OK** button to reset factory settings.

3.3.2.6 Upgrade Firmware

To upload the latest firmware to the WAP-5000, you can open the **Host** menu and select **Upgrade Firmware**, or click on the icon . A dialog box will pop up. You may either enter the file name in the **Firmware File** field or browse the file by clicking the **Browse** button, then click **Upgrade** button to start the process.




3.3.2.7 New/Edit/Delete Host Address

Click the icon  to open the **New/Edit Address** dialog box. After enter the IP address of a WAP-5000, **WMS** will automatically find the device and list it on the **Host Table**. You can also select any WAP-5000 on the table and click the icon  to delete it whenever it is no longer necessary.

3.3.2.8 Import/Export Host Table

The **Host Table** is a very powerful function to support a mass deployment of PLANET outdoor WLAN products. You can combine several WAP-5000s together with WAP-5100 to form a group with a specific Host Table name so that you can divide the wireless network into many small groups.

• Create Host Table via Automatic Discovery


Click **Automatic Discovery** icon to find all compatible devices. Select the desired APs and other wireless devices (for example, located in building A). Choose **Export Host Table**  to save the Host Table to a file (for convenience, you can save the Host table on a network disk for ease of access).

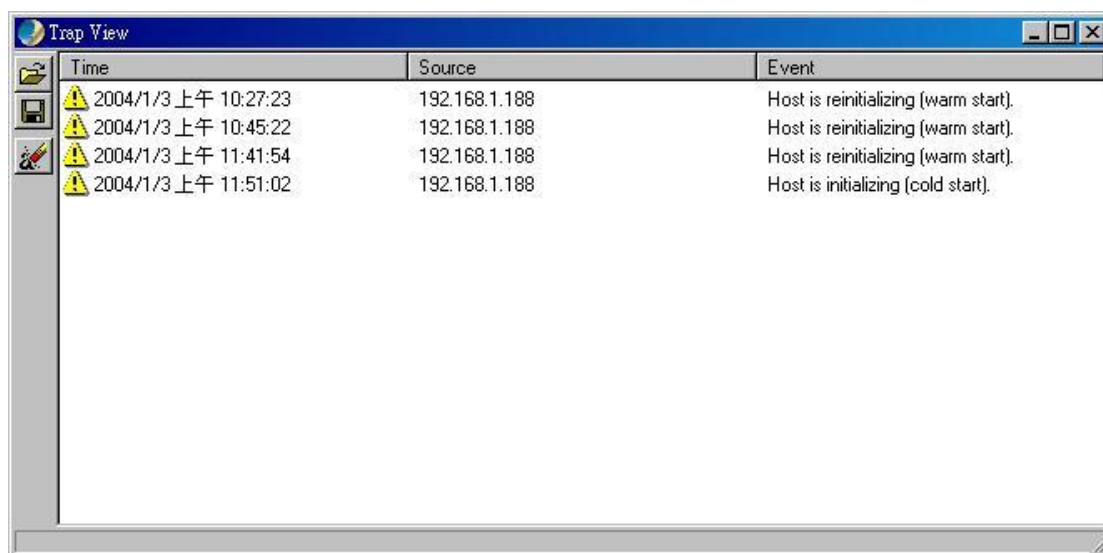
• Import Host Table to check device's availability

Import the Host Table from a file (for convenience, you can retrieve the Host table on a network disk for the ease of access). Once the Host Table is imported, **WMS** will automatically check the availability of APs and other compatible devices listed in the Host Table. This is an extremely powerful feature to make up for the inadequacy of **Auto-Discovery**. **Auto-Discovery** can only find compatible devices when they are alive. Failed devices cannot be found via **Auto-Discovery**. The devices listed in the Host Table should be available and provide the service. If they do not exist, **WMS** can report their absence immediately so that the system administrator can take immediate action.

3.3.3 Trap View

If the administrative PC has been assigned as a Trap Server of a WAP-5000, you can use **Trap View** to view the trap log information of the WAP-5000.

Open **Start** menu and select **Start Trap View**, or click on the icon  from the main **WMS** window, then the **Trap View** window appears as below.



The log shows the time, the IP address of the reporting WAP-5000, and the event. You can save, open, and delete log files through the **File** menu.

Chapter 4 Troubleshooting

This chapter provides solutions to problems usually encountered during the installation and operation of the WAP-5000.

How do I set the WAP-5000 back to its factory default settings?

You can apply **Factory Reset** option from the menu of the **WLAN Management System (WMS)** or use **Kick Start** function by the following way:

- w Connect the WAP-5000 to your PC. Please make sure the Ethernet connection is normal.
- w Open **WLAN Management System (WMS)** application and click **Kick Start** icon.
- w Click **Find** icon from **WLAN Kick Start** window or press <F5> key to search the WAP-5000.

Right-click the WAP-5000 that you want to reset and select **Restore Default** option.

The WMS utility cannot detect a WAP-5000 on the same network.

- w Make sure the WAP-5000 is powered on and connected to an Ethernet network.
- w Check the IP addresses assigned to the WAP-5000 and **WMS** terminal PC. They should be in the same subnet and unique. For example, if the WAP-5000's IP address is 192.168.1.5 with a mask of 255.255.255.0, then the PC's IP address should be 192.168.1.x with a mask of 255.255.255.0.

The throughput rate is slow.

Check the following:

- w Verify the antenna, connector, and cabling are well connected.
- w Change the direction of the antenna slightly.
- w There may be interference, possibly caused by a microwave oven, 2.4-GHz wireless phone, or metal objects. Move these interference sources or change the location of the wireless PC or AP.
- w Change the wireless channel on the WAP-5000.
- w Verify the network traffic does not exceed 37% of bandwidth.
- w Lower the broadcast rate of wired network to no more than 10 broadcast messages per second
- w Verify wired network topology and configuration.

If Technical Support assistance is required, please prepare the following information ready before you contact us.

- w LED status
- w A list of the product hardware (including revision levels), and a brief description of the network structure
- w Details of recent configuration changes, if applicable

If it appears that more in-depth support is required, have the following information on hand before seeking assistance:

- w What you were doing when the error occurred
- w What error messages you saw
- w Whether the problem can be reproduced
- w The serial number of the product
- w The firmware version and the debug information

Free Manuals Download Website

<http://myh66.com>

<http://usermanuals.us>

<http://www.somanuals.com>

<http://www.4manuals.cc>

<http://www.manual-lib.com>

<http://www.404manual.com>

<http://www.luxmanual.com>

<http://aubethermostatmanual.com>

Golf course search by state

<http://golfingnear.com>

Email search by domain

<http://emailbydomain.com>

Auto manuals search

<http://auto.somanuals.com>

TV manuals search

<http://tv.somanuals.com>