



# **PCI ADSL Modem**

**ADP-8301**

User's Manual

# Copyright

Copyright (C) 2002 PLANET Technology Corp. All rights reserved.

The products and programs described in this User's Manual are licensed products of PLANET Technology. This User's Manual contains proprietary information protected by copyright, and this User's Manual and all accompanying hardware, software, and documentation are copyrighted.

No part of this User's Manual may be copied, photocopied, reproduced, translated, or reduced to any electronic medium or machine-readable form by any means by electronic or mechanical. Including photocopying, recording, or information storage and retrieval systems, for any purpose other than the purchaser's personal use, and without the prior express written permission of PLANET Technology.

# Disclaimer

PLANET Technology does not warrant that the hardware will work properly in all environments and applications, and makes no warranty and representation, either implied or expressed, with respect to the quality, performance, merchantability, or fitness for a particular purpose.

PLANET has made every effort to ensure that this User's Manual is accurate; PLANET disclaims liability for any inaccuracies or omissions that may have occurred.

Information in this User's Manual is subject to change without notice and does not represent a commitment on the part of PLANET. PLANET assumes no responsibility for any inaccuracies that may be contained in this User's Manual. PLANET makes no commitment to update or keep current the information in this User's Manual, and reserves the right to make improvements to this User's Manual and/or to the products described in this User's Manual, at any time without notice.

If you find information in this manual that is incorrect, misleading, or incomplete, we would appreciate your comments and suggestions.

# FCC Compliance Statement

This equipment generates and uses radio frequency energy and if not installed and used properly, that is, in strict accordance with the instructions provided with the equipment, may cause interference to radio and TV communication. The equipment has been tested and found to comply with the limits for a Class A computing device in accordance with the specifications in Subpart B of Part 15 of FCC rules, which are designed to provide reasonable protection against such interference in a residential installation. However, there is no guarantee that interference will not occur in a particular installation. If you suspect this equipment is causing interference, turn your Ethernet Switch on and off while your radio or TV is showing interference, if the interference disappears when you turn your Ethernet Switch off and reappears when you turn it back on, there is interference being caused by the Ethernet Switch.

You can try to correct the interference by one or more of the following measures:

- w Reorient the receiving radio or TV antenna where this may be done safely.
- w To the extent possible, relocate the radio, TV or other receiver away from the Switch.
- w Plug the Ethernet Switch into a different power outlet so that the Switch and the receiver are on different branch circuits.

If necessary, you should consult the place of purchase or an experienced radio/television technician for additional suggestions.

# CE mark Warning

The is a class B device, In a domestic environment, this product may cause radio interference, in which case the user may be required to take adequate measures.

## Trademarks

The PLANET logo is a trademark of PLANET Technology. This documentation may refer to numerous hardware and software products by their trade names. In most, if not all cases, these designations are claimed as trademarks or registered trademarks by their respective companies.

## Revision

User's Manual for PLANET PCI ADSL Modem:  
Model: ADP-8301

Rev: 1.0 (Oct. 2002)

Part No. EM-ADP8301V1.doc

# TABLE OF CONTENTS

---

<b>CHAPTER 1 INTRODUCTION .....</b>	<b>1</b>
FEATURES.....	1
SYSTEM REQUIREMENT .....	1
DATA REQUIREMENT .....	1
<b>CHAPTER 2 INSTALLATION .....</b>	<b>3</b>
HARDWARE INSTALLATION.....	3
DRIVER INSTALLATION FOR BOTH LAN AND WAN MODE WITH WIN 98 .....	3
DRIVER INSTALLATION FOR BOTH LAN AND WAN MODE WITH WIN ME.....	6
DRIVER INSTALLATION FOR BOTH LAN AND WAN MODE WITH WIN 2000 .....	7
DRIVER INSTALLATION FOR BOTH LAN AND WAN MODE WITH WIN XP .....	11
DRIVER INSTALLATION FOR BOTH LAN AND WAN MODE UNDER WIN NT .....	14
<b>CHAPTER 3 ADSL CONFIGURATION .....</b>	<b>17</b>
ADSL LAN CONFIGURATION .....	17
ADSL WAN CONFIGURATION.....	20

# Chapter 1

## Introduction



PLANET PCI ADSL modem ADP-8301 is designed to provide cost-effective access to high-speed ADSL services. With our ADSL modem, surfing on Internet is just like driving a sport car on the Express Highway. Video on Demand, Videoconference and any high-speed internet applications is not a dream any more. But a reality!

### Features

- I Compliant with ANSI T1.413 Issue 2, ITUG.dmt (G.992.1) and splitterless ITU G.lite (G.992.2) ADSL standard.
- I Connection Rate:
  - Maximum up to 8 Mbps for downstream.
  - Maximum up to 1 Mbps for upstream.
- I Software Upgradeable.
- I DMT modulation and demodulation.
- I Full-rate adaptive modem.
- I WAN mode support:
  - PPP over ATM LLC SNAP/VCMUX (RFC 2364)
  - PPP over Ethernet LLC SNAP/VCMUX (RFC 2516)
- I LAN mode support:
  - Classical IP over ATM (RFC 1577)
  - Bridged IP over ATM LLC SNAP/VCMUX (RFC 1483)
  - Routed IP over ATM LLC SNAP/VCMUX (RFC 1483)
- I Compliant with PCI Local Bus Specification, Revision 2.2.

### System Requirement

- I Pentium II with 300MHz above or compatible.
- I RAM: 64MB or above.
- I Windows 98/2000/NT 4.0/ME/XP.

### Data Requirement

You must get the following data information from your ISP or phone company to set up this PCI ADSL Modem.

#### For ADSL LAN mode user

- I VPI/VCI value

- I Encapsulation mode (example: RFC 1483, 1577...etc.)
- I IP Address, Subnet mask
- I Gateway value
- I DNS

### **For ADSL WAN (PPPoE/PPPoA) mode user**

- I VPI/VCI value
- I Encapsulation mode (example: RFC 2364,2516...etc.)
- I User name & password

## Chapter 2 Installation

# 2

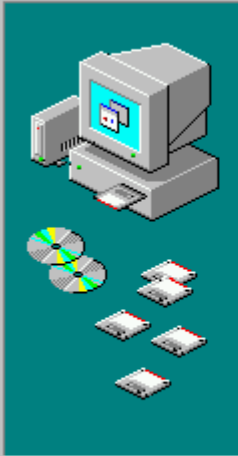
### Hardware Installation

1. Make sure that your computer is switched off. Unplug the power cord from the wall socket. Also turn off all other peripherals you may have attached to your computer. Remove your computer cover
2. Select a free PCI slot. Remove the cover from the slot. Keep the screw. You will be using it in the next step.
3. Carefully slide the ADSL modem into the chosen slot. Press firmly on the top of the modem to seat it. Fasten the modem to your system with the screw you removed in the previous step. Replace the computer over.
4. Plug one end of the phone cable into the Line jack on your ADSL modem. The other end of the phone cable should be connected directly to the phone outlet.
5. Turn on your computer.
6. The “Add New Hardware Wizard” will be displayed. Insert the driver CD and click **Next**.
7. Choose the “Search for the best driver for your device (Recommended)” and click **Next**.
8. Select the “CD-ROM drive”, and “Specify a location” and click Browse. Then, specify the path which ADSL modem connected your computer to Internet, then click OK.

### Driver Installation for both LAN and WAN mode with Win 98

1. The “Add New Hardware Wizard” will be displayed .Click Next.

## Add New Hardware Wizard



This wizard searches for new drivers for:

PCI System Peripheral

A device driver is a software program that makes a hardware device work.

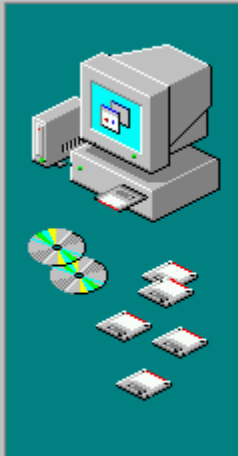
< Back

Next >

Cancel

2. Choose the “**Automatic search for a better driver (Recommended)**” and click **Next**.

## Add New Hardware Wizard



What do you want Windows to do?

- Search for the best driver for your device (Recommended).
- Display a list of all the drivers in a specific location, so you can select the driver you want.

< Back

Next >

Cancel



3. Choose CD-ROM drive and Specify a location. Then click **Next**.



4. Click **Next**.



5. Click **Finish** to complete the installation.

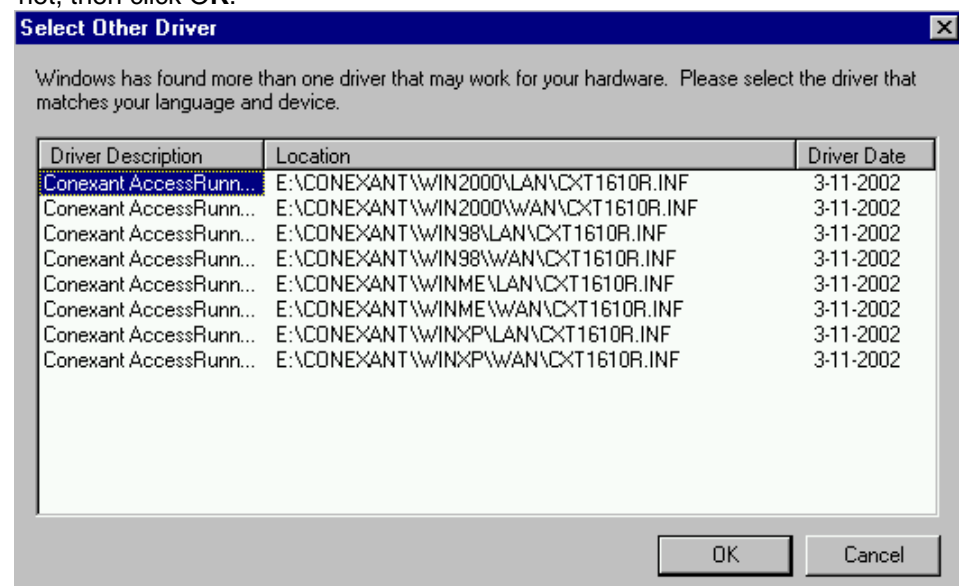


## Driver Installation for both LAN and WAN mode with Win ME

1. The “Add New Hardware Wizard” will be displayed and choose Automatic search for a better driver (Recommended). Click **Next**.



2. Please specify the path which ADSL modem connected your computer to Internet, then click **OK**.



3. Windows is installing drivers for your new hardware. Click **Finish**.



## Driver Installation for both LAN and WAN mode with Win 2000

1. The "Add New Hardware Wizard" will be displayed and click **Next**.



2. Choose the “**Search for a suitable driver for my device (recommended)**”, and click **Next**.



3. Select the “**CD-ROM drives**”, then click **Next**. (Make sure you have inserted the driver CD into the CDROM drive.)

## Found New Hardware Wizard

### Locate Driver Files

Where do you want Windows to search for driver files?



Search for driver files for the following hardware device:



Base System Device

The wizard searches for suitable drivers in its driver database on your computer and in any of the following optional search locations that you specify.

To start the search, click Next. If you are searching on a floppy disk or CD-ROM drive, insert the floppy disk or CD before clicking Next.

Optional search locations:

- Floppy disk drives
- CD-ROM drives
- Specify a location
- Microsoft Windows Update

< Back

Next >

Cancel

4. Windows will find a driver for this device. Then click **Next**.

## Found New Hardware Wizard

### Driver Files Search Results

The wizard has finished searching for driver files for your hardware device.



The wizard found a driver for the following device:



Base System Device

Windows found a driver for this device. To install the driver Windows found, click Next.



g:\Drivers\ADP-8301\winxp\wan\cxt1610r.inf

< Back

Next >

Cancel

5. Windows is installing drivers for your new hardware.

## Found New Hardware Wizard

### Hardware Install

Windows is installing drivers for your new hardware.



Conexant AccessRunner PCI Arbitration Device

Installing software necessary to support your hardware...

< Back

Next >

Cancel

6. The “**Digital Signature Not Found**” will be displayed, Click **Yes**.



7. Click **Finish** to complete ADP-8301 installation.



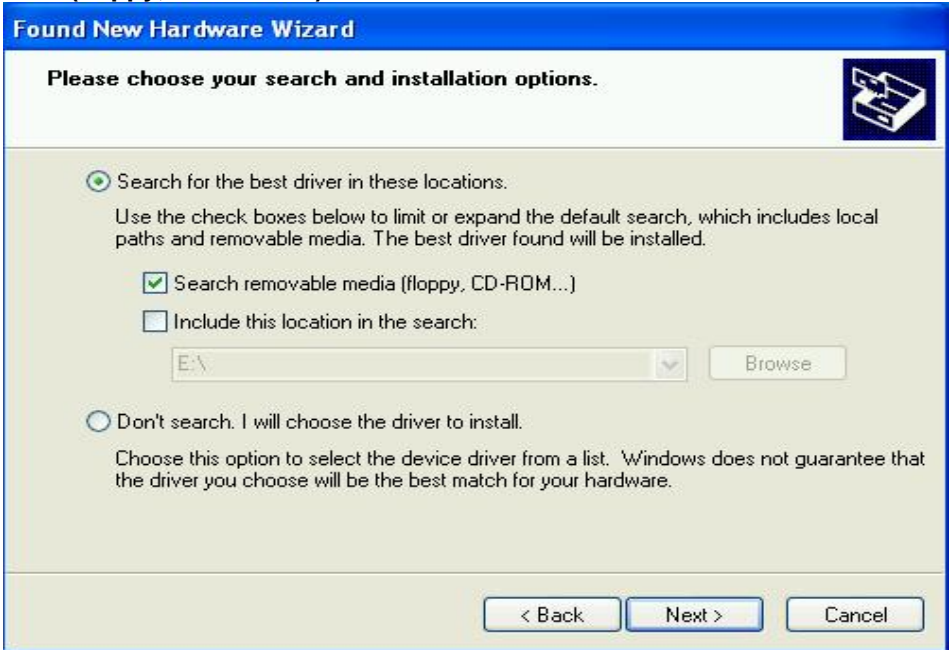
## Driver Installation for both LAN and WAN mode with Win XP

1. The "Add New Hardware Wizard" will be displayed. Choose **Install from a list or specific location (Advanced)** and click **Next**.

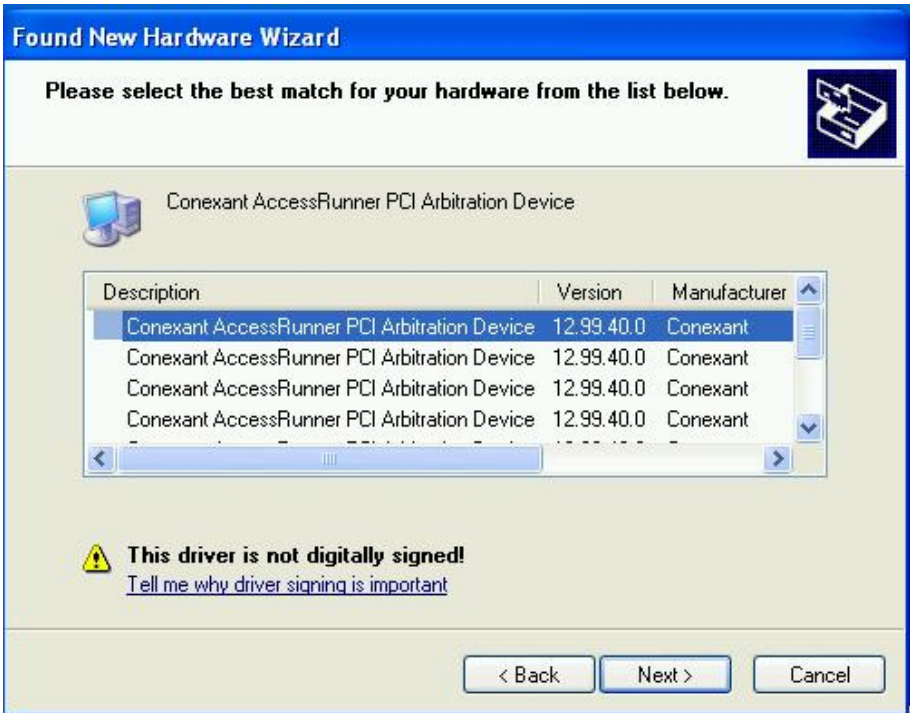




2. Choose “Search for the best driver in these locations”, and “**Search removable media (floppy, CD\_ROM...)**”, then click **Next**



3. “**Conexant AccessRunner PCI Arbitration Device**” will be displayed and click **Next**.



4. under “**Software Installation**” window. Click “**Continue Anyway**”.





5. Under “**Hardware Installation**” window. Click “**Continue Anyway**”.

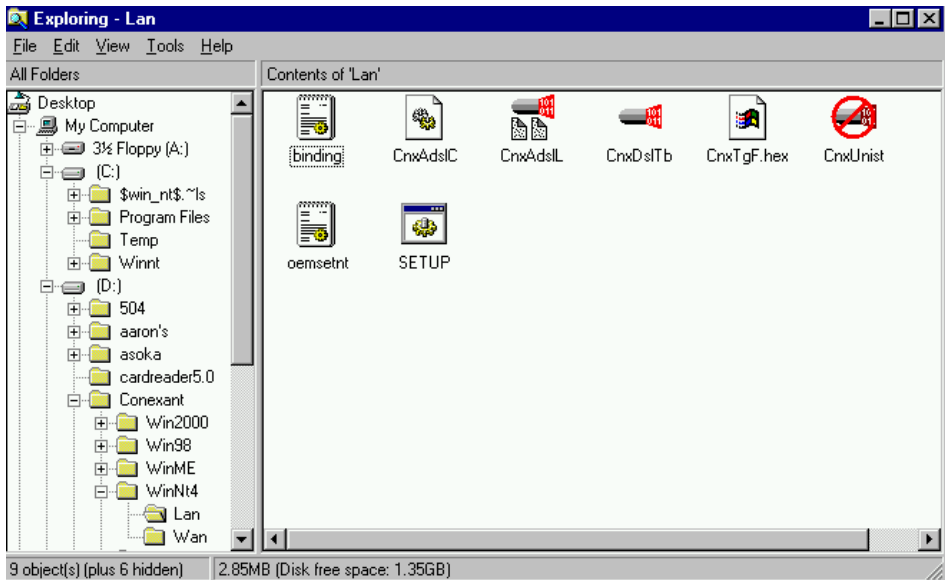


6. Click **Finish** to complete the “Found New Hardware Wizard” of ADP-8301.

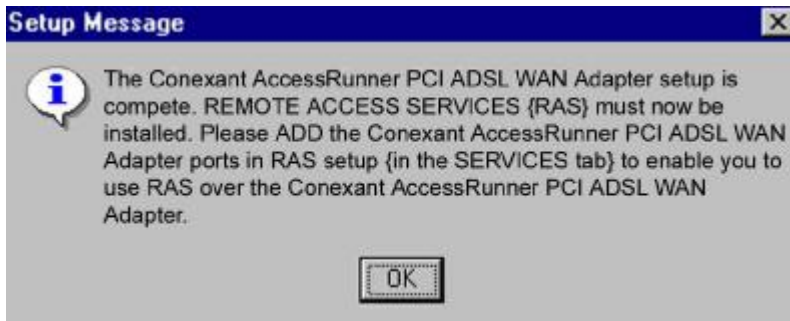


## Driver Installation for both LAN and WAN mode under Win NT

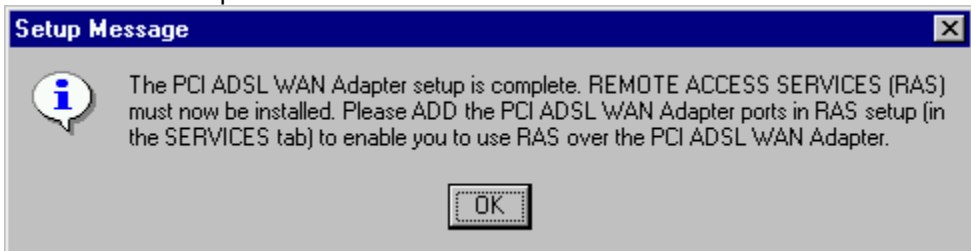
1. Search and open for the properly driver files, e.g. D:\Conexant\Winnt4\ chooses LAN or WAN and run SETUP.



2. If this message appears, please install **REMOTE ACCESS SERVICES (RAS)**.



3. Click **OK** to complete the installation.



4. Click the **Conexant Access Runner ADSL** icon, it will be displayed the status of the modem.



# Chapter 3

## ADSL Configuration

# 3

### ADSL LAN Configuration

1. **Conexant Access Runner ADSL** icon should be added in the control panel or on the desktop.

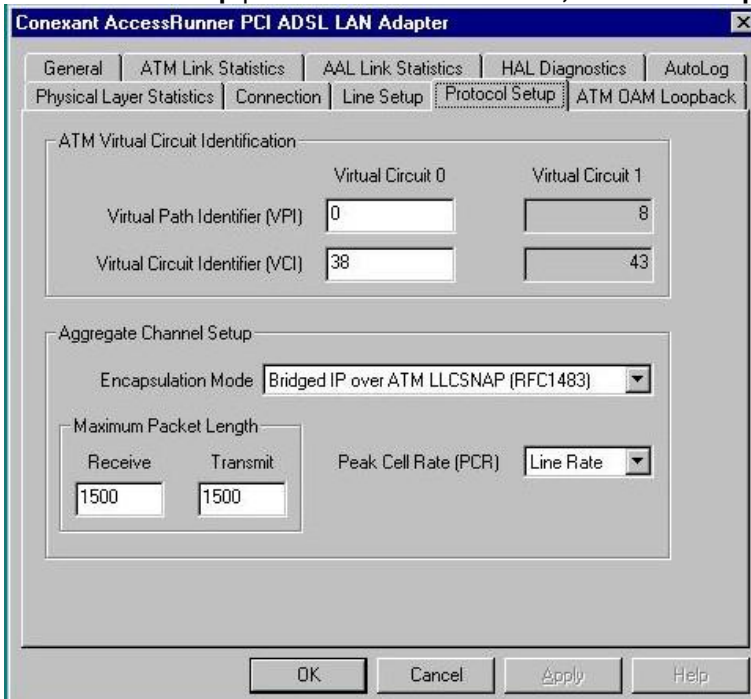


2. Click the **Conexant Access Runner ADSL** icon, it will be displayed the status of the modem.

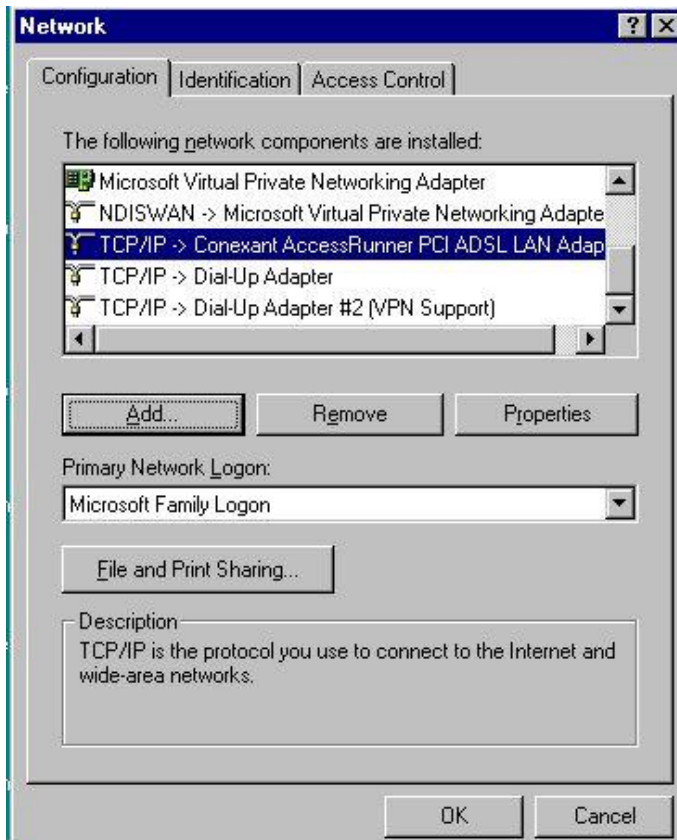


3. Press **Alt + P** on the keyboard, the right figure appears.

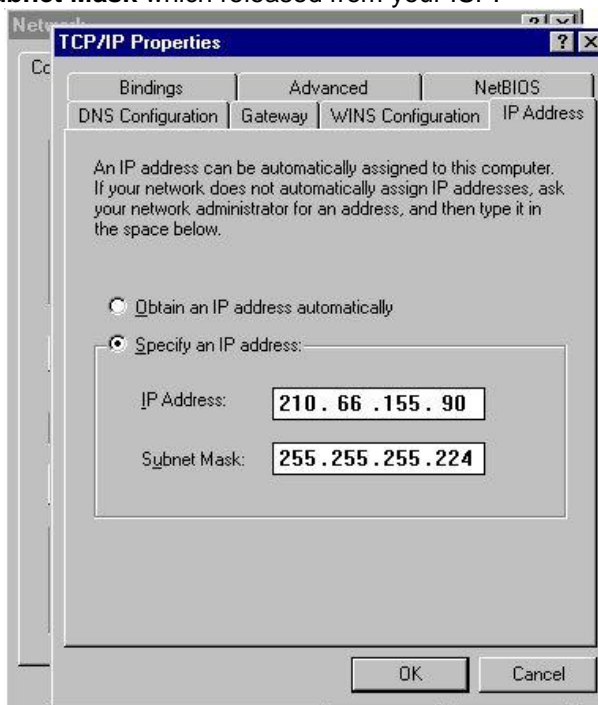
4. Under the **Protocol Setup** please set the value of **VCI**, **VPI** and **Encapsulation**.



5. Click My Computer on the **desktop\ Control Panel\ Network\ Configuration** -> select **TCP/IP** -> click **properties** to setup TCP/IP related parameters.

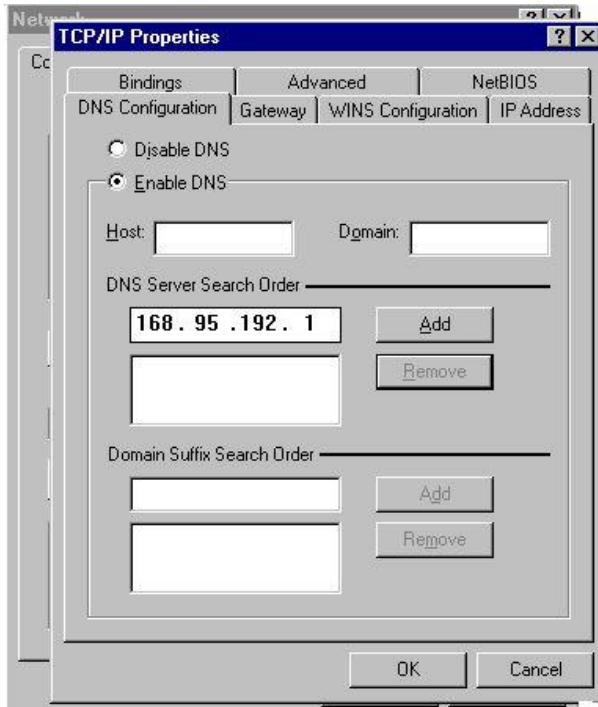


6. **IP Address** setting: select **Specify an address**, then enter the value of **IP Address** and **Subnet Mask** which released from your ISP.



7. **Gateway** setting: enter the data from your ISP and click **Add**.

8. **DNS Configuration** setting: Select **Enable DNS**, enter **Host** name and add **DNS Server Search Order**. Click **Add** and **OK**.



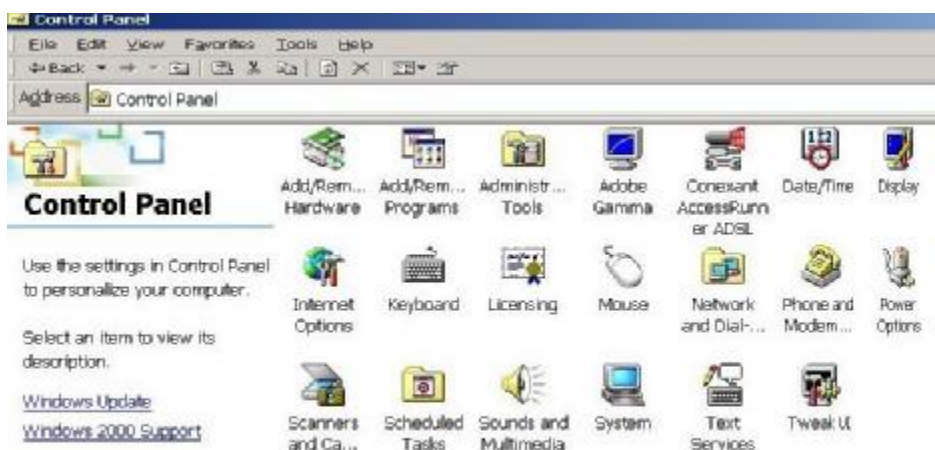
9. Reboot computer to activate the modifications if necessary.

**NOTE:** TCP/IP configuration listed above is a sample for ADP-8301 installation on Windows 98 machine. It is strongly recommended to refer user's manual or consult network administrator to ensure correctness of TCP/IP configuration. Meanwhile, parameters of TCP/IP configuration shall be depended on your ISP; please consult with your service provider about the configuration.

## ADSL WAN Configuration

1. After driver installation, **Conexant Access Runner ADSL** and **AccessRunner DSL** icon should be added in the control panel and on the desktop.

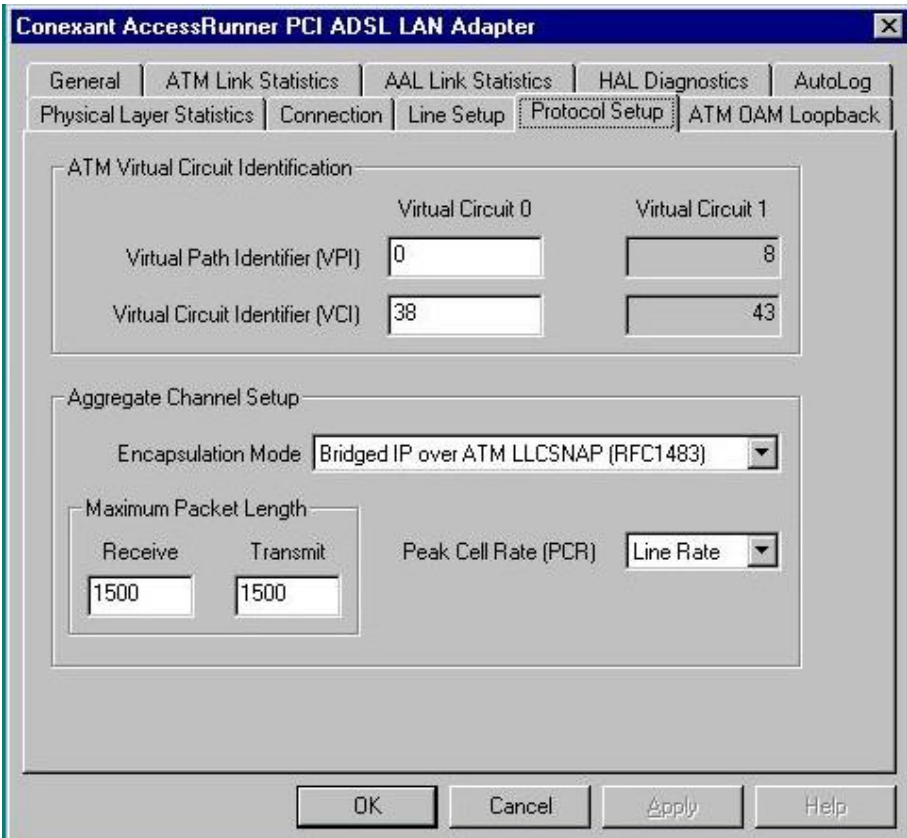




2. Click the **Conexant Access Runner ADSL** icon, modem status be displayed.



3. Press **Alt + P** on the keyboard, the right figure appears.
4. Under the **Protocol Setup** please set the value of **VCI**, **VPI** and **Encapsulation**, then click **OK**.



5. Click the **Access Runner DSL** icon on the **desktop** -> enter **User name**, **Password** and **Phone number (don't care; recommend "0000")** from your ISP.
6. Click **Connect**. Now, you can surf the Internet.



**NOTE:** TCP/IP configuration listed above is a sample for ADP-8301 installation on Windows 2000 machine. It is strongly recommended to refer user's manual of operation system or consult network administrator to ensure correctness of TCP/IP configuration. Meanwhile, parameters of TCP/IP configuration shall be depended on your ISP; please consult with your service provider about the configuration.

## Free Manuals Download Website

<http://myh66.com>

<http://usermanuals.us>

<http://www.somanuals.com>

<http://www.4manuals.cc>

<http://www.manual-lib.com>

<http://www.404manual.com>

<http://www.luxmanual.com>

<http://aubethermostatmanual.com>

Golf course search by state

<http://golfingnear.com>

Email search by domain

<http://emailbydomain.com>

Auto manuals search

<http://auto.somanuals.com>

TV manuals search

<http://tv.somanuals.com>