

Wireless LAN Switch



The WLS-1280 is a Wireless LAN Switch dedicatedly designed for small / medium-scale network environment. It enables administrators to effectively manage different categories of users based on self-defined policies. There is no need to change any configuration for client devices. The simplified deployment and administration eases the integration into existing wired and wireless networks.

With the Access Point (AP) management functions, the WLS-1280 is able to aggregate up to 12 controlled Access Points. The administrator can discover, configure, copy from template, update, and monitor all managed the APs from one single secured interface. Such design avoids the need to configure the devices one by one.

The WLS-1280 also provides the comprehensive security features. The authorized end-to-end communication for both wired and wireless network can prevent anonymous users to occupy the valuable bandwidth. The local VPN termination with client approach offers the highest level of wireless security without any hassle.

KEY FEATURE

Networking

- Supports Router, NAT mode
- Supports dual WAN for fail over, or load balancing
- Controllable LAN ports require user authentication
- Support IP Plug and Play (IP PnP)
- Built-in DHCP server and supports DHCP relay
- Supports Walled Garden (free surfing zone)
- Built-in hardware-based VPN accelerator

Security

- Supports 64/128-bit WEP, WPA, and WPA2 data encryptions
- Supports VPN termination of IPSec tunnels
- Supports VPN passthrough
- Supports DoS attack protection
- Supports MAC Access Control List
- Supports User Black List

AP Management

- Manageable APs include WAP-4033/4033PE and WAP-4060PE
- Supports up to 12 managed APs
- Centralized remote management via HTTP interface
- Auto discover managed APs
- Locally maintain configuration profiles for all managed APs
- Single UI for upgrading and restoring managed APs' firmware
- Monitor all managed APs' status and associated client list
- System alarms and status reports on managed APs

Monitor and Report

- Status monitoring of on-line users
- IP-based monitoring of network devices
- Supports Syslog
- User traffic history logging

Accounting and Billing

- Supports RADIUS accounting, RADIUS VSA (Vendor Specific Attributes)
- Built-in billing profiles for on-demand accounts
- Supports session expiration control
- Provides billing report on screen
- Provides detailed per-user traffic history

User Management

- Supports up to 120 concurrent users
- Provides 500 local accounts and 2000 on-demand accounts
- Supports multiple login methods (POP3, LDAP, RADIUS, NT Domain)
- Role-based and policy-based access control
- Supports monitor IP on 3rd party APs

System Administration

- Customizable login and logout portal page
- SSH remote management
- Console management interface
- Backup and restore system configurations

SPECIFICATION

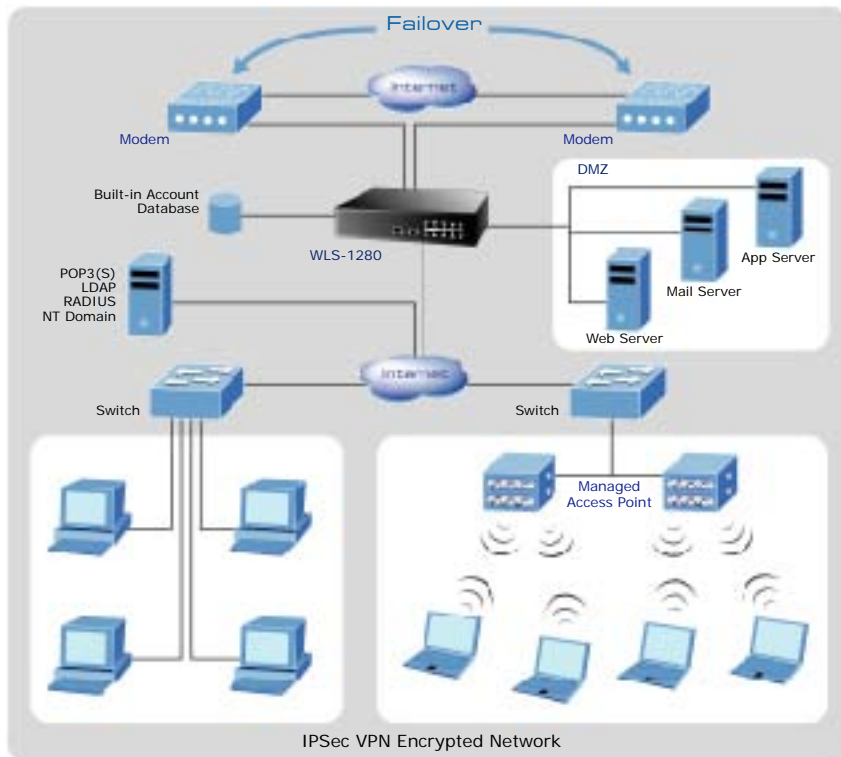
Product **Wireless LAN Switch**

Model	WLS-1280
Hardware	
WAN Ports	2 x 10/100Base-TX RJ-45
LAN Ports	8 x 10/100Base-TX RJ-45
Console Port	1 x RJ-11
LED Indicator	Power, Status, WAN 1-2, LAN 1-8
Dimensions (W x D x H)	243 x 150 x 45.5mm
Weight	1.28kg
Environmental Specification	Operating temperature: 0 - 45 Degree C Storage temperature: -20 - 70 Degree C Relative humidity: 0% - 90% (non-condensing)
Power Requirement	12V DC, 1.5A
Electromagnetic Compatibility	FCC, CE
Capacity and Performance	
Concurrent User	120
Local Account	500
On-demand Account	2000
Managed Access Point	12
Monitored 3rd Party Access Point	40
VPN Termination Tunnel	120
VPN 3DES/DES Throughput	30Mbps

APPLICATIONS

Cost-effective PoE Wireless LAN

The PLANET WLS-1280 integrates "user control" - AAA and "wireless access" - AP management, into one system. As the topology, the WLS-1280 is set to control both wired and wireless users in company's Intranet. The user account information is stored in the local database or an external server. User authentication is processed via SSL encrypted web interface. User policy based control, including bandwidth, access control, services type control, utilize the usage of the dual WAN interfaces



ORDERING INFORMATION

WLS-1280	Wireless LAN Switch
----------	---------------------

Free Manuals Download Website

<http://myh66.com>

<http://usermanuals.us>

<http://www.somanuals.com>

<http://www.4manuals.cc>

<http://www.manual-lib.com>

<http://www.404manual.com>

<http://www.luxmanual.com>

<http://aubethermostatmanual.com>

Golf course search by state

<http://golfingnear.com>

Email search by domain

<http://emailbydomain.com>

Auto manuals search

<http://auto.somanuals.com>

TV manuals search

<http://tv.somanuals.com>