



scrivo .1

- _ Product Specification and System Requirements
- _ How to use scrivo.1
- _ Bluetooth Installation and Configuration
- _ scrivo.1 Driver Installation and Configuration
- _ How to use following utilities Finger Note™

Thank You

Thank you for purchasing the **scrivo.1**. You have made an excellent choice for your next digital input device. **scrivo.1** is designed to be used for many functions with ease.

Trademarks

The following are registered trademarks of plawa-feinwerktechnik GmbH & Co. KG: **scrivo.1**, the **scrivo.1** logo, and **plawa mobilities** logo is a trademark of **plawa**. Other product names mentioned in this guide may also be trademarks or registered trademarks of their respective owners.

Manual Notice

plawa reserves the right to make changes to this manual and to the equipment described herein without notice. Considerable effort has been made to ensure that this manual is free of inaccuracies and omissions. However, **plawa** makes no warranty of any kind including, but not limited to, any implied warranties of merchantability and fitness for a particular purpose with regard to this manual. **plawa** assumes no responsibility for, or liability for, errors contained in this manual or for incidental, special, or consequential damages arising out of the furnishing of this manual, or the use of this manual in operating the equipment, or in connection with the performance of the equipment when so operated.



Contents

1. Description	page	4
_ Features & Shipment Contents	page	4
_ Specifications	page	4
_ Bundle Software	page	5
2. System Requirements	page	6
3. Using scrivo.1	page	6
_ Correct way to hold scrivo.1	page	7
_ OCR (OCR: Optical character recognition)	page	8
_ Example of using scrivo.1	page	9
4. Installing & Configuring Bluetooth	page	11
_ Installation for Windows 2000/XP	page	11
_ Update Bluetooth setting in Windows XP service pack2	page	21
_ Installation for Windows 98SE/ME	page	25
5. scrivo.1 Driver and Software	page	28
_ Installing scrivo.1 driver and utilities	page	28
_ scrivo.1 Driver Setting	page	29
_ Changing mode and usage	page	32
6. Using Finger Note™	page	34
_ What is Finger Finger Note™?	page	34
_ Finger Note™ Basic Menu	page	34
7. Troubleshooting	page	38
8. Contact and Support	page	39

1. Description

Make hand written notes, design and control your desktop. Create MMS messages on a smart phone and manage memos on a PDA.

Features

- _ Optical navigation & mouse-hover technology
- _ Portable and convenient: light and durable (perfect for notebook users)
- _ Ergonomic design: Fits comfortably in your hand. No wrist pains after long hours of use.
- _ USB connection: plug and play.
- _ Includes application software which maximizes usage of **scrivo.1** "Finger Note™" (Only for PC users).

Shipment Contents.

- _ **Scrivo.1**
- _ Charger (receiver)
- _ Manual
- _ Pad
- _ Software Finger Note™
- _ Driver CD

Specifications

- _ Communication: Bluetooth
- _ Frequency: 2.4 GHz
- _ Range: Within 10 Meter radius
- _ Resolution: 800 dpi
- _ Connection: USB
- _ Battery 3.7 V DC, 400 mA Li Polymer
- _ Continuous usage time: 5 hours
- _ Stand by usage time: 26 hours (80 hours in power saving mode)

scrivo.1

- _ Size: 157 (L) x18 (B) x30 (H) mm
- _ Weight: 40 g
- _ Power: 3.7 V rechargeable Battery

Charger:

- _ Size: 108 (L) x 49 (B) x 42 (H) mm
- _ Weight: 100 g (including wire)
- _ Cable length: 1.7 m
- _ Power: USB power (DC5V)

Software package

Finger Note™ (Only for PC users)

Create memos and highlight text in any program. This program allows users to open Microsoft PowerPoint, Word, Excel by slides. User can also save slides with created memos. (Image file format). This program is very especially useful in presentations. (Refer to "Using Finger Note™").

Practical use in other Software programs*

- _ Paint: It allows the user to draw or write in Microsoft Paint in Accessories, something which users cannot do using a typical mouse.
- _ Windows XP or Office XP installed on PC: Practical uses XP's handwriting recognition (OCR).
- _ Practical use in graphic programs in with other tablet systems.

2. System Requirements

scrivo.1 requires the following minimum system configuration:

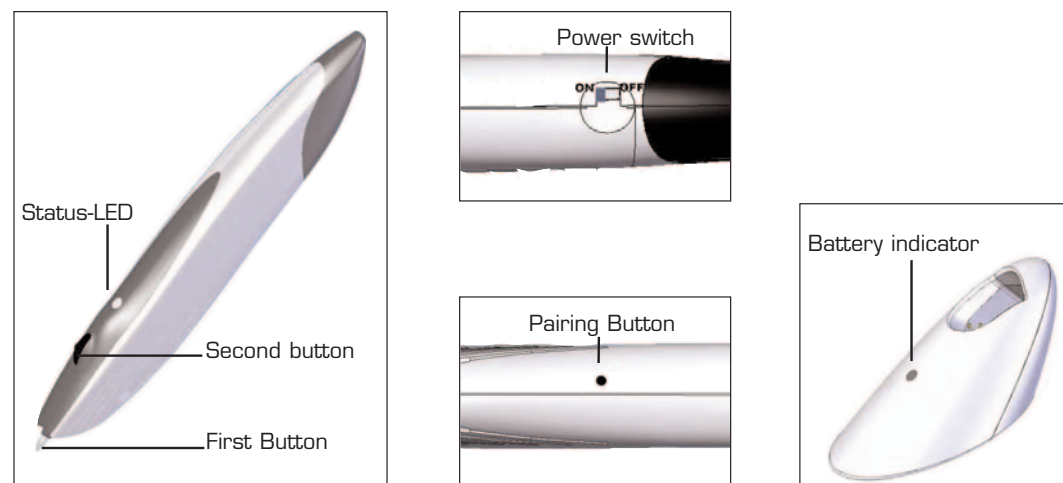
- _ Pentium II 400MHz or equivalent
- _ Operating System: Windows 98SE/ME/2000/XP, Mac OS 9.2-X
- _ System Memory: At least 32MB or above
- _ Hard Drive: At least 11.5MB available memory
- _ HID Support with USB port

* PC without USB ports cannot be used.

* Requires 3rd party software when you use it on a PDA or mobile phone. (Not included)

3. Using scrivo.1

scrivo.1 has a power switch, two function buttons, and two indicators.



Power switch

Turn the power ON/OFF using this switch located on the bottom of the pen. Power switch must be in the ON position before use. Switch to the OFF position if it's not in use for a long period of time.

Pairing Button

Reset the pen to initial stage. After successful initiation, Status LED light will blink green continuously.

First button (pen-tip button)

Located on the end of scrivo.1 and has same function as the left button on a typical mouse.

Second button (Jog button)

Located on the front top of the pen and has same function as the right button on typical mouse. When you scroll the Jog switch, it will work like the mouse wheel scroll feature.

Status-LED

- 1) Green LED -> indicates status between Pen and Charger is ok.
 - Blinking continuously: Initiating stage for pairing. (Blinking for the first 3 mins remain lit after 3 mins)
 - No LED light: Complete Pairing Status.
 - Continues to blink in 1-2 sec. interval: Power to receiver has been interrupted
- 2) Red LED - Check battery status
 - Need to recharge scrivo.1 when red LED blinks (continues to be usable for 30 mins)

Battery indicator

Red LED during charging and green LED when fully charged. Total charging time: 3.5 hours.

Correct way to hold scrivo.1



When using a typical ballpoint pen, you can write on a paper regardless of how you hold the pen. On the other hand, if you hold a fountain pen and rotate its pen tip to an upright position, you cannot write at all since the tip of a fountain pen has a different structure to that of a typical ballpoint pen. Similarly, the performance of scrivo.1 greatly depends on how you hold it. As a result, when you try to write a memo or draw a simple graph with scrivo.1, holding it incorrectly may result in unexpected output such as rotated letters, tilted axis and so on. Therefore, you should be careful when you hold scrivo.1

The correct way to hold scrivo.1 is shown in the pictures below. The forepart, where the push button is attached, should face the front



Front View



Side View

If the angle of scrivo.1 and the surface is too low as shown in the figure (a), or if its forepart does not face to the front as shown in the figure (b), (c), and (d), it will not perform correctly.



(a) Angle of pen and surface is too low.



(b) scrivo.1 is turned to right.



(c) scrivo.1 is reversed.

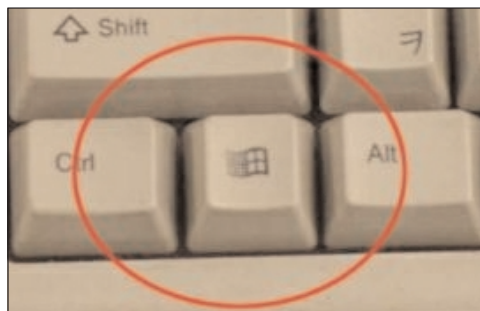


(d) scrivo.1 is turned to left.

OCR (Optical Character Recognition)

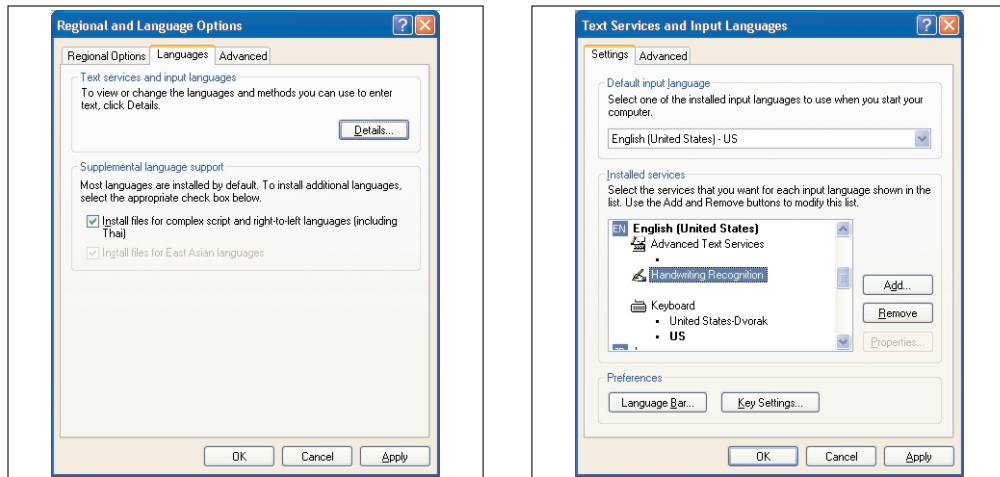
If users' PC has Windows XP or Office XP installed, they will be able to use their OCR programs to convert their users own handwriting to text or save it as a picture file. (Handwritten to text conversion will not be supported if OCR isn't Windows XP and Office XP or above isn't installed.)

For those environments that support OCR programs, IME pad is located on the task bar and can be launched by clicking the icon (IME Pad). Users can write or draw using this function.



If the task bar isn't visible, click the Windows key – located on the bottom left of your keyboard, to enable the task bar.

To use the OCR function in Windows XP, open "Regional and Language Options" in the "Control Panel" and click Details in the "Languages" tab to open the "Text services and input languages" dialog box where you can add OCR function.



If Windows XP is not installed but has Office XP or above, open "Text service" in the "Control Panel" to add OCR function.

Mouse Pad

scrivo .1 is designed to work on most surfaces except surfaces made out of materials that don't reflect lasers such as glass or white paper. Use the pad included for optimum results for writing, drawing and other mouse function uses.

Changing Pen Tip

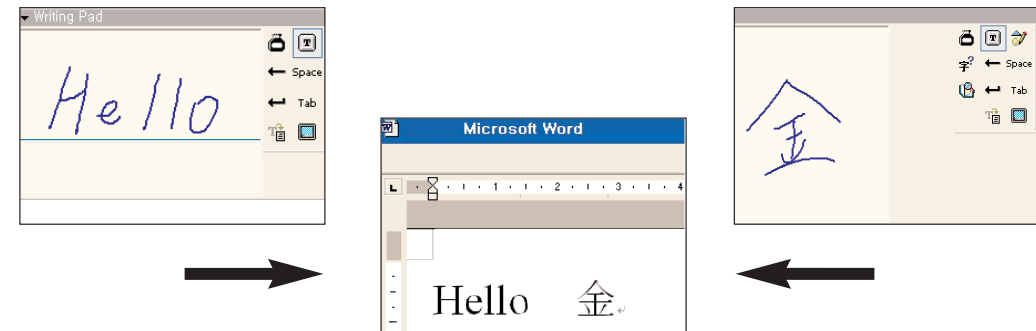
scrivo .1's pen tip is designed to withstand abrasion. However for best results, the pen tip needs to be replaced after it has been used for a long period of time.



- _ First, prepare one of the tips included with scrivo .1.
- _ Hold the tip and pull towards arrow shown in the figure on left (Use pincer or pliers for your convenience).
- _ Insert the new tip into the now empty space.
- _ Place the pen on a hard surface and gently press the tip.

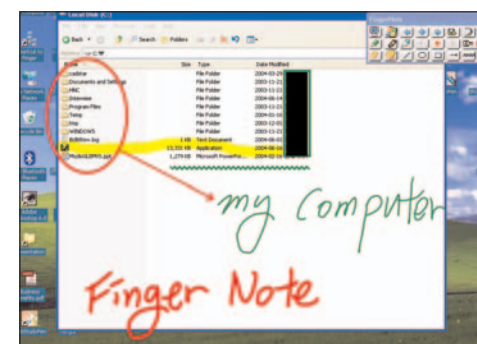
Example of using scrivo .1 (Only for PC users)

- _ OCR function (MS Office XP or above)



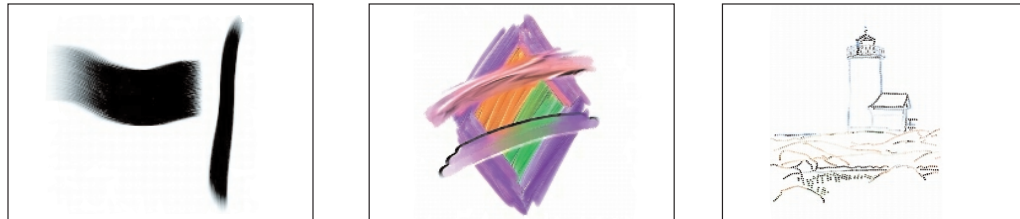
Converting handwriting into text using Office XP.

- _ Finger Note™



Taking memos directly on the desktop using Finger Note™.

_ Using in Microsoft Paint or as a graphic tool



scrivo.1 can be used in graphic software programs such as Corel Painter, PhotoShop, PaintShop, Microsoft Paint: www.corel.com / www.adobe.com / www.jasc.com

_ Correction function in Word documents

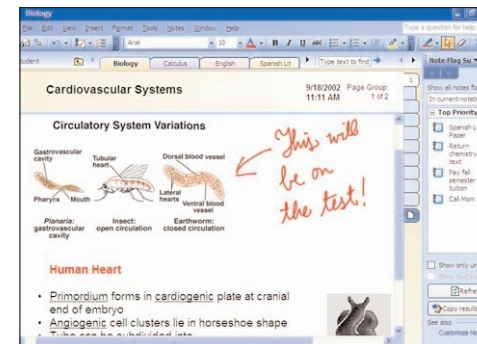
Using correction function in Microsoft Word. Practical use in document-creating applications such as Microsoft Excel, Power Point, etc.

_ Input signatures



Input signatures in MS Word, PDF files, and other documents.

_ Using in Microsoft OneNote



Microsoft OneNote is a program with which you can input not only with the keyboard, but also with a pen.

4. Installing and Configuring Bluetooth

4.1 Windows 2000/XP Environment

Please install/configure in the following order

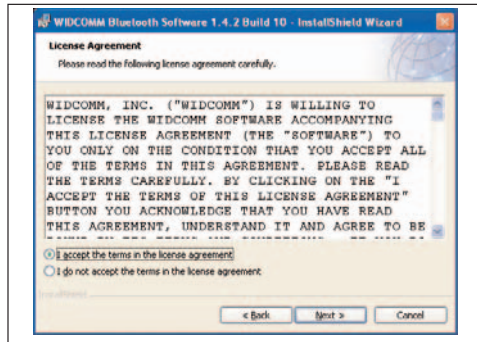
- _ Bluetooth Software (BTW) Installation
- _ Connect charger to your computer
- _ Bluetooth Configuration

Software Installation

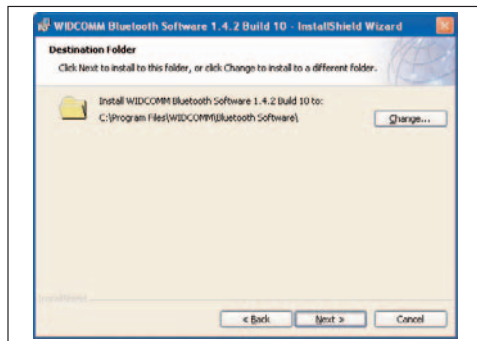
1) Windows Installer will automatically run when you insert the CD into CD/DVD ROM drive. If Windows Installer does not run automatically, use Windows Explorer to find the **Setup.exe** file on the CD to launch the setup program. Click **(Next)** to continue software installation.



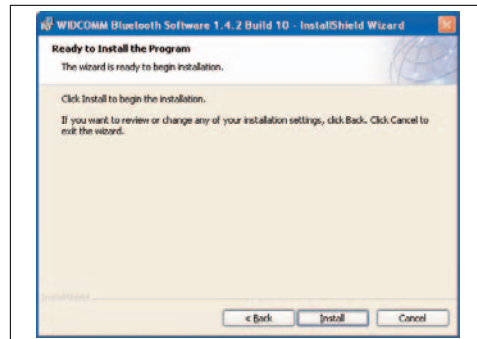
2) Please read the License Agreement carefully and choose “I accept the terms in the license agreement”. Then click **[Next]** to continue setup.



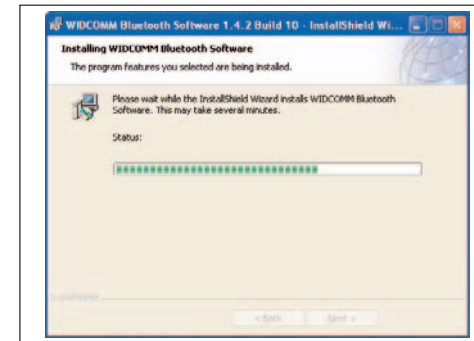
3) Assign a Destination folder for **Bluetooth software**. We recommend you leave the default. Click **[Next]** to continue with the next step.



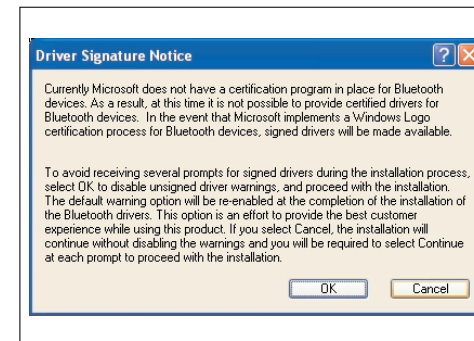
4) The following window appears when ready to install. Click **[Install]**.



5) The following picture shows the installation process.



6) During the process, you might get a message as shown below. This tells you that you currently do not have the Bluetooth signature program, but you can continue with installation without any problems.



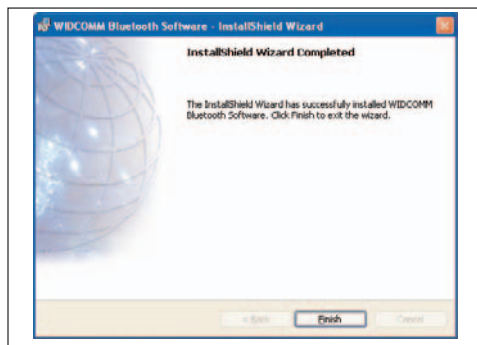
During the process, you might receive warnings as shown below. However, these will not harm your computer in any way. You may continue with installation.



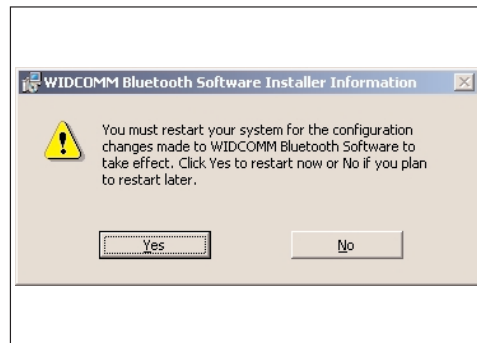
7) Checks whether hardware installation is completed or not. If you want to install hardware later, simply click **[Cancel]**. Always, install software first and then hardware.



8) Click **(Finish)** to complete the software installation.



9) Restart your computer after completion.



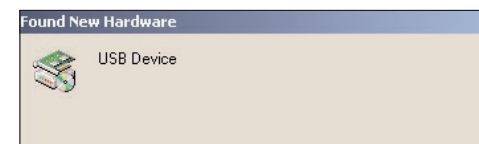
Depending on your system specification, you may or may not get a 'restart' message. If you don't, you have to restart your system.

Connect charger to your computer

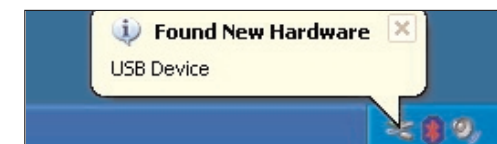
Bluetooth software installation is complete. Lastly, you need to connect pen and cradle with configuration.

1) Connect your charger to an available USB port.

2) "Found New Hardware Wizard" window will open once hardware setup is completed and will search for "CSR USB Bluetooth Device".



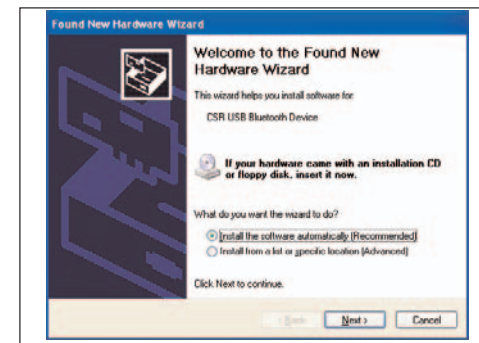
Windows 2000



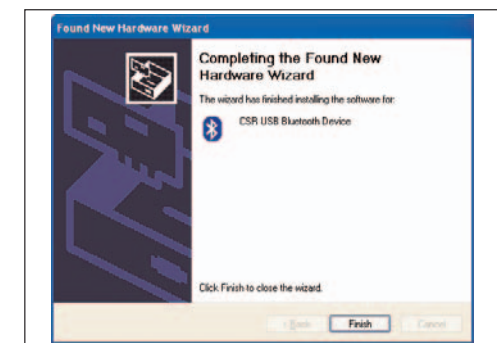
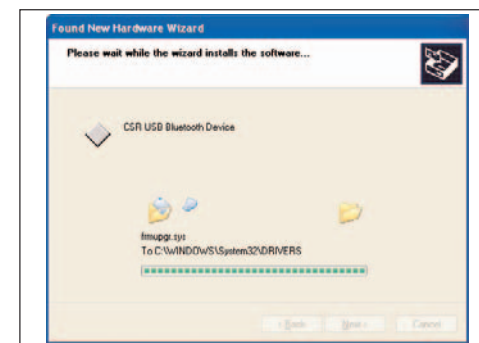
Windows XP

3) When the new device is detected, the **[Add Hardware Wizard]** starts automatically. Select **[Automatic Installation (recommended)]** and click **[Next]** to proceed.

(This process may take place automatically depending on your OS or user setting, and you may not have to do it manually. If so, simply proceed to the next step)



4) "Setup Wizard" will automatically set the selection list of installation program and copy the necessary files to the system. Click **[Finish]**, and run "New Device Wizard". The Bluetooth icon will be created in the System Tray after the installation has successfully finished.



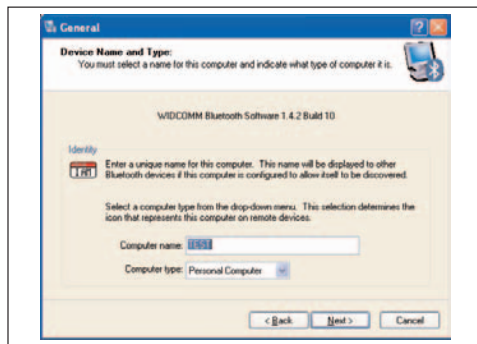
Bluetooth Configuration

After hardware installation is complete, you need to configure the Bluetooth connection. This process is required in Bluetooth technology different from previous version such as IR or RF technology.

1) The following is a basic Bluetooth setup process. If the “Initial Bluetooth Configuration Wizard” does not appear, double click the “My Bluetooth Places” icon to run the basic Bluetooth software setup process. Click [Next] to continue the process when the Wizard asks to add the icon on the system.



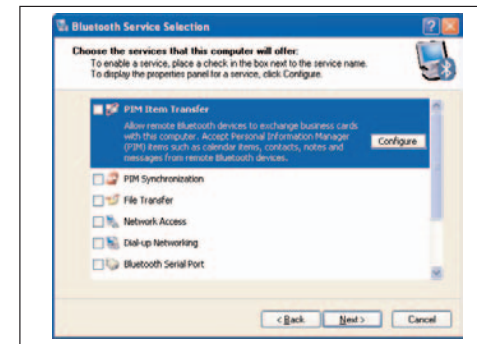
2) Click [Next] after entering the computer name and type.



3) Click [Next] to start the wizard.



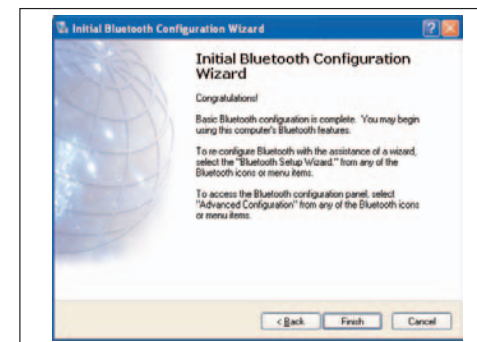
4) The following is the list of Bluetooth services. In this case, scrivo.1 does not require any of the services so you can uncheck everything and click [Next] to continue with the next installation.



5) Click [Skip] to continue when you see the following message.



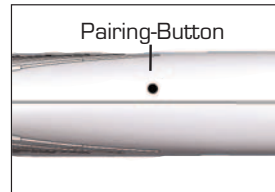
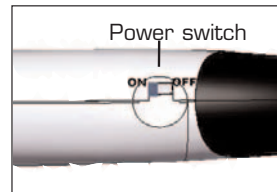
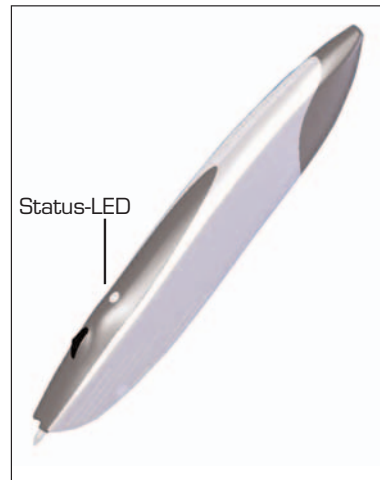
6) When configuration is complete, you will see the following message. Simply click [Finish].



7) When you are done with configuration, double click **[My Bluetooth Places]** on the desktop. Or right click the **Bluetooth Icon** in the taskbar to run **[Explore My Bluetooth Places]**.

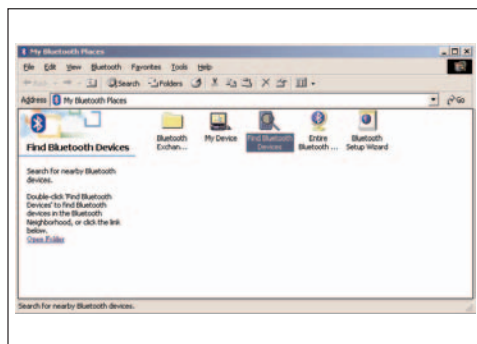


8) Turn on the **scrivo.1** switch after you have completed previous steps.

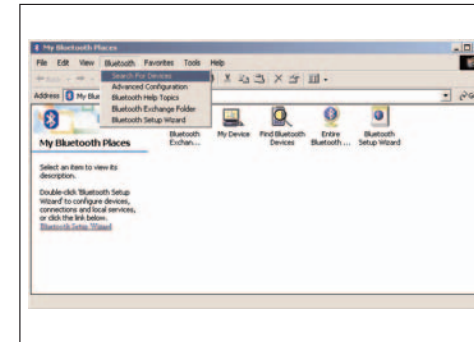


If you turn on the switch, the Green LED will blink rapidly. This means that the pen is connected. If the LED light blinks slowly or is not blinking at all, push the pairing button so that the LED light blinks faster. You can use a ballpoint to push the pairing button.

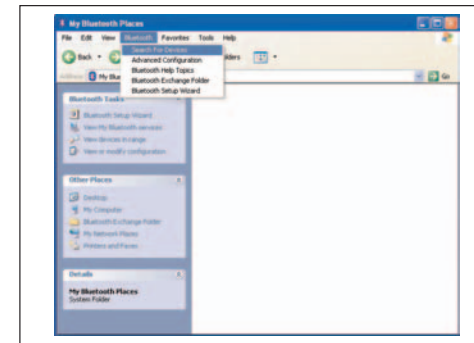
9) When your pen is connected, run **[Find Bluetooth Devices]** in **[My Bluetooth Places]**.



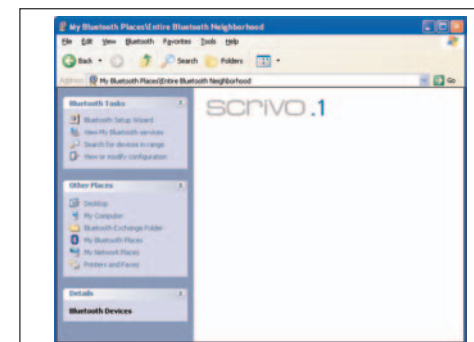
You can select **[Bluetooth]** -> **[Search For Devices]** from the menu instead of **[Find Bluetooth Devices]**.



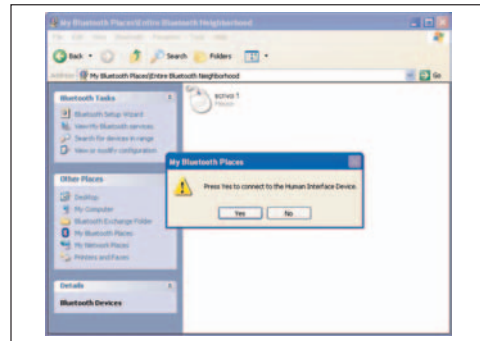
If you run **[My Bluetooth Places]** and get the following picture, simply select **[Bluetooth]** -> **[Search for Devices]** from menu the in order to find it.



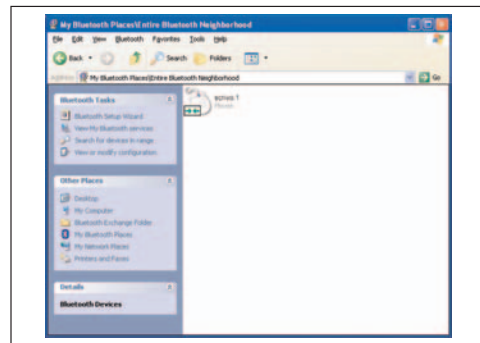
10) After you search for devices, you see the **scrivo.1** icon as shown in the following picture. Double click this logo icon. If you still don't see the icon, go back to step 3, try pairing correctly and search again.





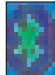
11) After you double click the icon, a window will pop up and ask for your confirmation. Click **(Yes)**.



12) After device installation is complete, you will see a green arrow next to the icon. This is the final step and you will be able to move **scrivo.1**.



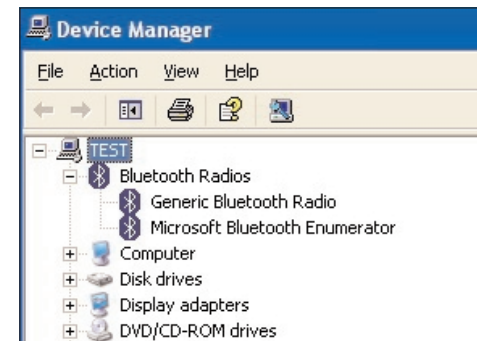
You can check your connection status by looking at the Bluetooth icon in the system tray on the bottom right.

- Enable (started)  White
- Disabled (stopped)  Red
- Connected  Green

Once you complete these steps, you do not need to go through them again unless you switch your computer. These settings will remain even after you restart your computer.

4.2 Update Bluetooth setting in Windows XP service pack2

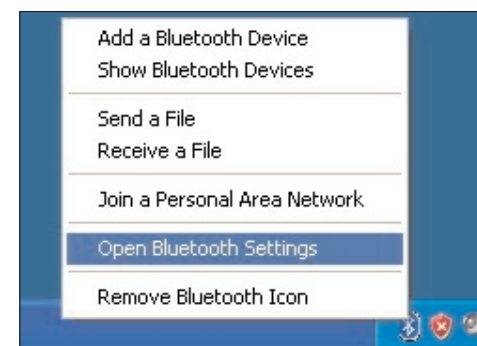
1. Please check the Bluetooth Device is already in the **“Device Manager”**, as shown on the following image. To open the **“Device Manager”**, please follow the following steps: Press the right mouse button on the Desktop, press **“My Computer”** and then **“Properties”**. Open the option **“Hardware”**. You will see the button to open the **“Device Manager”**.



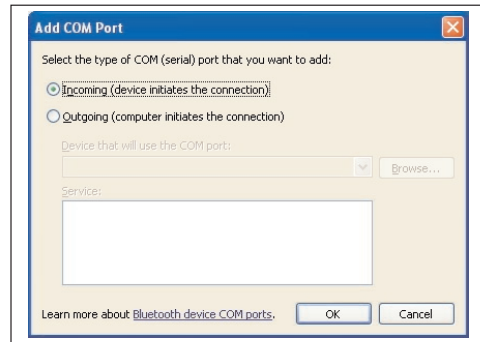
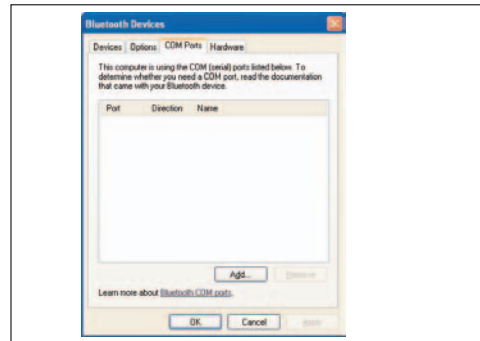
2. If you installed Windows XP service pack2 and the device is installed correctly, the Bluetooth icon will be displayed as shown in the next image.



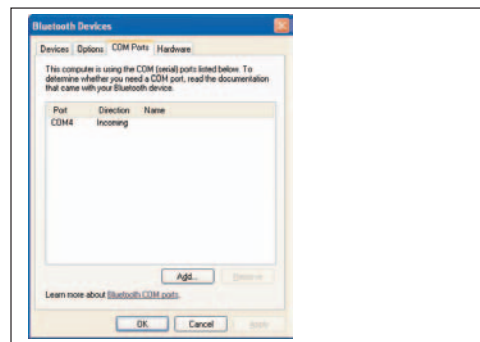
3. After installing the Bluetooth device correctly, click the Bluetooth icon and select **“Open Bluetooth Settings”**.



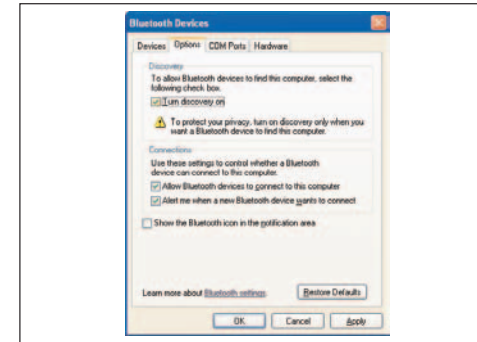
4. After step number 3, you will see a new window as shown below. Select **“COM Ports”** and then click the **“Add”** button for adding COM Ports.



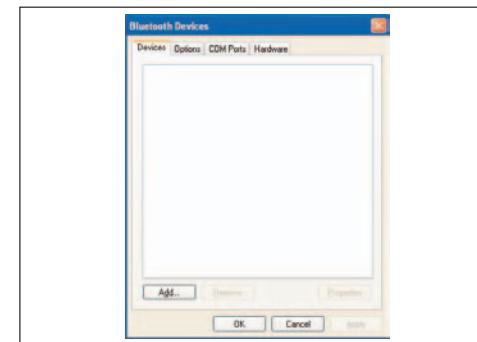
5. In the Add COM Port window, select the **“Incoming”** button and click **“OK”**, as shown above. The window with the added COM ports will appear, as follows. You can check your connection status by looking at the Bluetooth icon in the system tray on the bottom right.



6. Select **“Options”** in the Bluetooth Devices Window and then check the correspondent boxes as shown below.



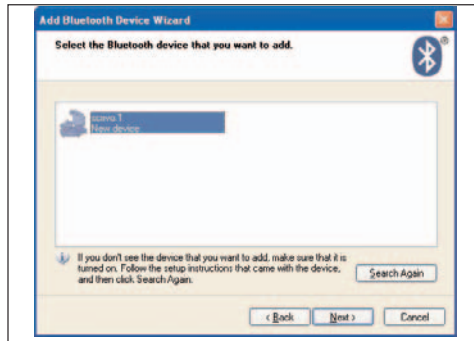
7. Select **“Devices”** in the Bluetooth Devices Window and then click the **“Add”** button for adding the device.



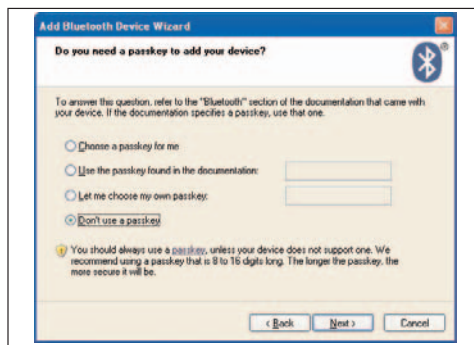
8. When the window **“Add Bluetooth Device Wizard”** is displayed, turn on scrivo.1’s power switch and pair it with scrivo.1’s cradle (receiver). Then, click **“Next”**.



9. The system will search for the device. If the system can not find the device, push the pairing button, and then click “search again”.



10. After completing the search, select the option “Don't use a passkey”. Then click “Next”.



11. Finish adding the Bluetooth device by clicking “Finish”.

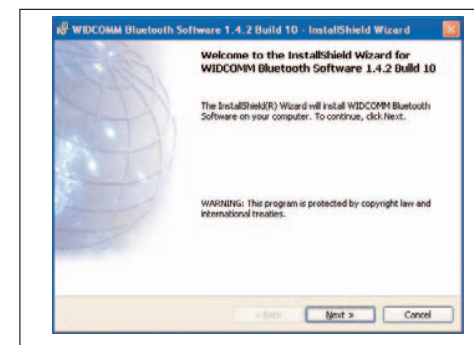


4.3 Windows 98SE/ME Environment

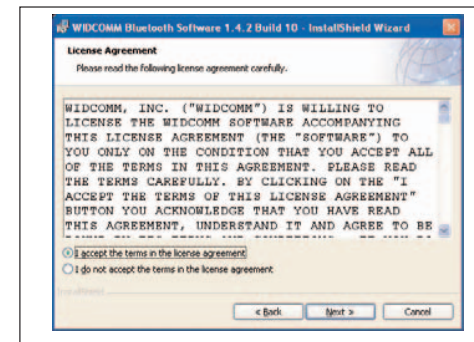
- Please install/configure in following order
- _ Bluetooth Software (BTW) Installation
 - _ Connect charger to your computer
 - _ Bluetooth Configuration

Software Installation

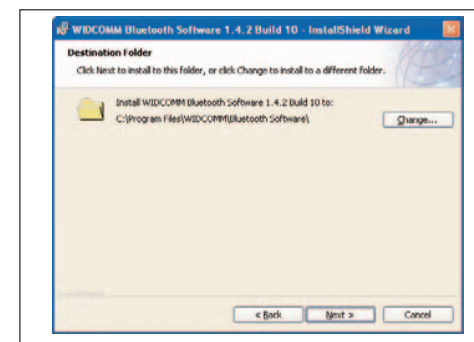
1) Windows Installer will automatically run when you insert the CD into your CD/DVD ROM drive. If Windows Installer does not run automatically, go to Windows Explorer to find the **Setup.exe** file on the CD to launch the setup program. Click **[Next]** button to continue software installation.



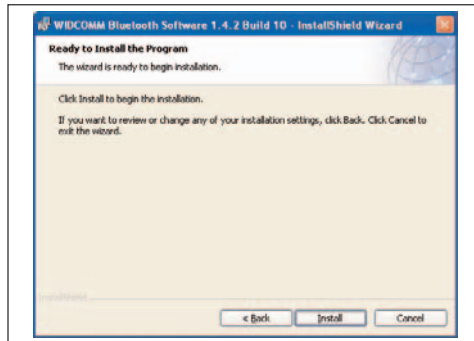
2) Please read the License Agreement carefully and choose “I accept the terms in the license agreement”. Then click **[Next]** to continue the setup.



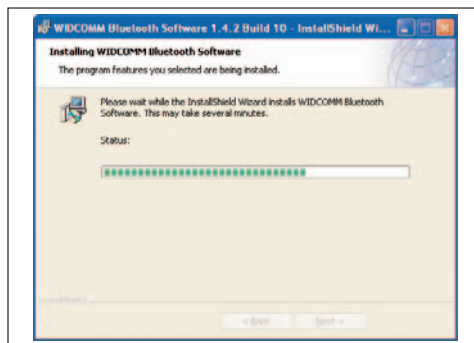
3) Assign a Destination folder for Bluetooth software. We recommend you leave the default. Click **[Next]** to continue with the next step.



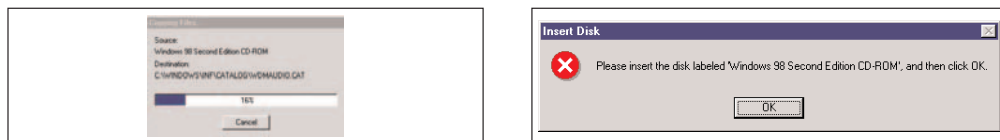
4) When the software is ready to be installed, the following window appears. Click **(Install)**.



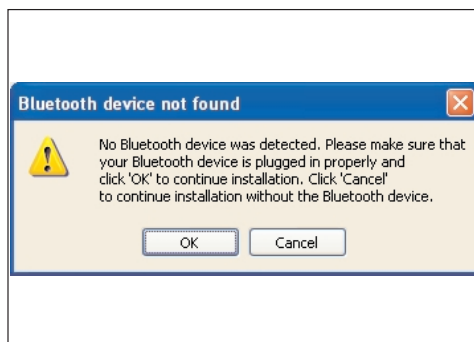
5) The following picture shows the installation process.



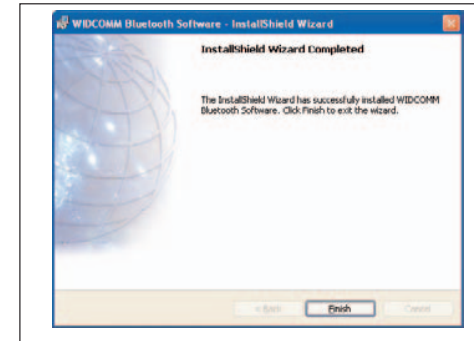
6) During the installation process, you might be asked to put the Windows 98SE/ME CD into your CD-ROM drive as shown in the following picture. If you have already put your Bluetooth software CD into the CD-ROM drive, simply take it out and replace it with the Windows 98SE/ME CD. Your PC will then automatically start to copy files from the CD.



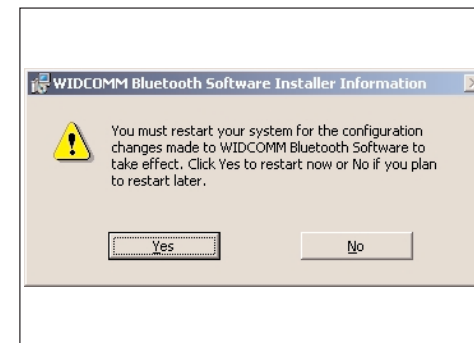
7) This asks if you want to install hardware now or not. If you want to install hardware later, simply click **(Cancel)**. Always install software first and then hardware.



8) Click **(Finish)** to complete software installation.



9) Restart your computer after installation is complete.

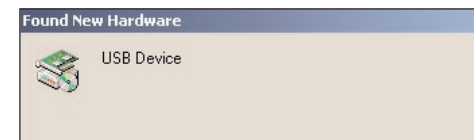


Connect charger to your computer

Bluetooth software installation is complete. In the final step, you need to connect the pen and charger and configure.

1) Connect your charger to an available USB port.

2) When you connect the device into your USB port, a window should pop up, telling you **“New Hardware detected”**. [Add New Hardware Wizard] will run and install the correct driver on your system. (Although it is plug and play, you might need the CD).



Warning: If the installed hardware cannot be found, select **[Start] > [Control Panel] > [New Hardware]** and detect the new hardware. Then, install the driver manually.

Bluetooth Configuration

Bluetooth configurations in a Windows 98/ME environment are the same as Windows 2000/XP. Please refer to the Bluetooth connection configurations on page 16 (You might need the Windows CD in a Windows 98/ME environment).

5. scrivo.1 Driver and Software

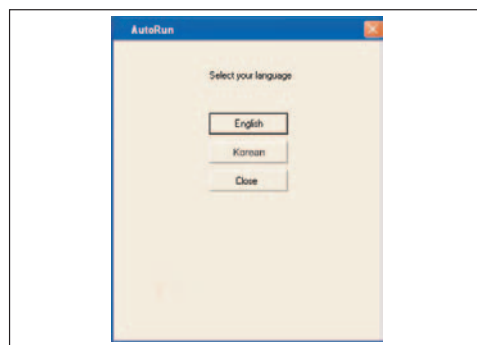
5.1 Installing scrivo.1 driver and utilities

Caution: Please exit other programs before connecting scrivo.1 or installing scrivo.1 driver and utilities.

Setup Bluetooth communication pen and receiver before installing **scrivo.1** driver. (Use Bluetooth Dongle CD). Insert the **scrivo.1** driver CD into your CD-ROM drive and install the driver after setting up Bluetooth communication.

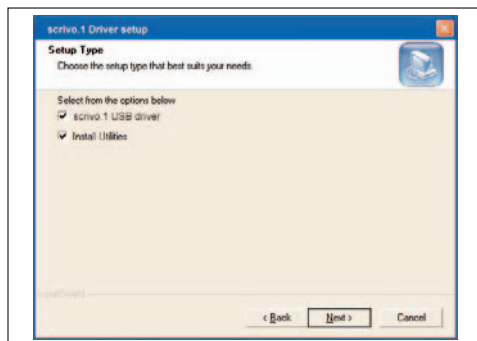
1) Select your language.

Installation files will be automatically loaded when the CD included is inserted into the CD-ROM drive. Select your language to install driver and utilities.



2) Choosing setup type.

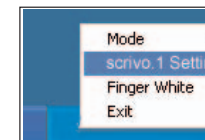
Select installation details and click **[Next]** to continue.



- _ Install **scrivo.1 USB driver** – USB driver will be installed if selected.
- _ Install **Utilities** – Finger Note™ will be installed if selected.

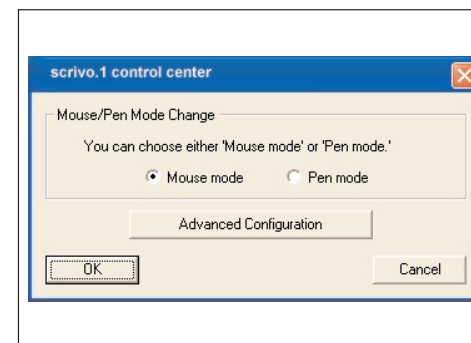
5.2 scrivo.1 driver setting

After installation, an icon will be created in the System Tray as shown in the figure below .

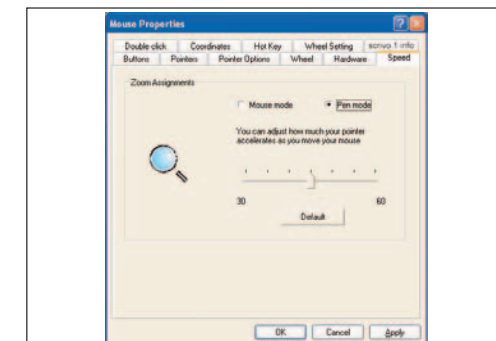
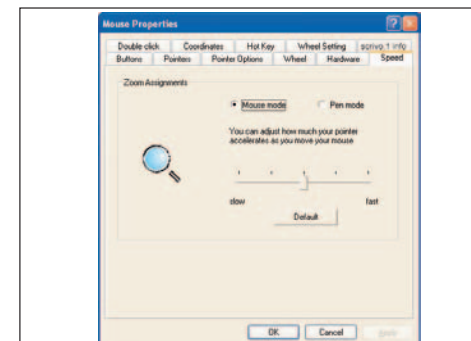


scrivo.1 System Tray logo figure. Open the **scrivo.1** Control Center by clicking **scrivo.1** Setting.

Another way to open the **scrivo.1** Control Center is to press the hot key (Default: F12). Simple settings can be done here. Choose **“Advanced Configuration”** for detailed settings.



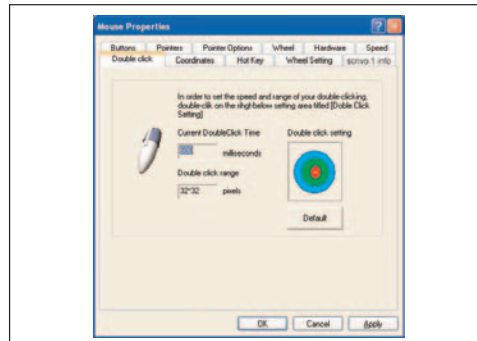
Speed



- _ Mouse Mode – This setting configures acceleration in mouse mode. Acceleration can be adjusted by moving the slider (Default: Middle)
- _ Pen Mode – This setting configures acceleration in pen mode. Acceleration can be adjusted by moving the slider (Default: 45)

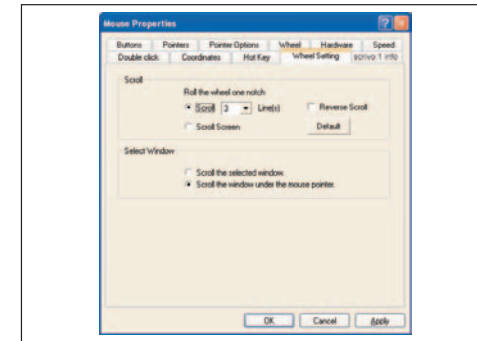
Double Click

This setting allows users to adjust the double clicking action using **scrivo.1**. Move your cursor to the target diagram and double click. The values in the small dialog box will change. By clicking "Apply" you can set the value according to the double click action you just made. It will be helpful to click several times. The corresponding range values appear. If you want to change it to the default setting, simply click on "Default". (Default: Speed 600ms, Range 32x32 pixels). If speed is set too fast or too centred in the circle, users might experience discomfort with **scrivo.1**.



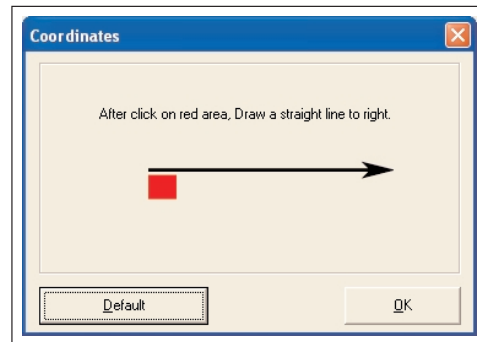
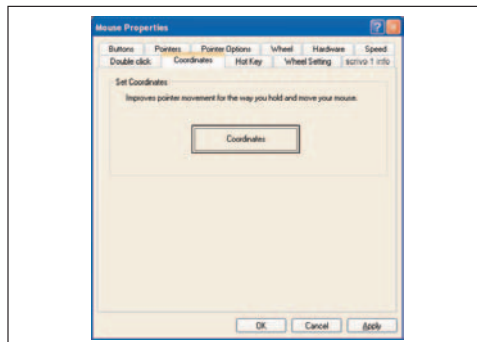
Wheel setting

This setting allows users to configure the wheel function. The default value is 3 lines when operating the window with the mouse pointer. Users can change the number of lines, reverse scroll, select window.



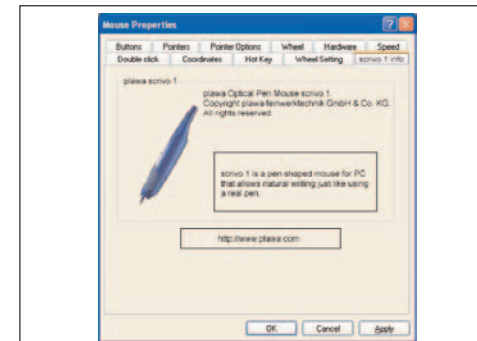
Coordination

This setting allows users to choose between right-handed and left-handed use. This is convenient for left-handed users. Select "coordinates" and then click and drag the red coloured area to draw out the most comfortable position. This setting applies the best hand position for users. When you want to apply the default setting, simply click (Set default).



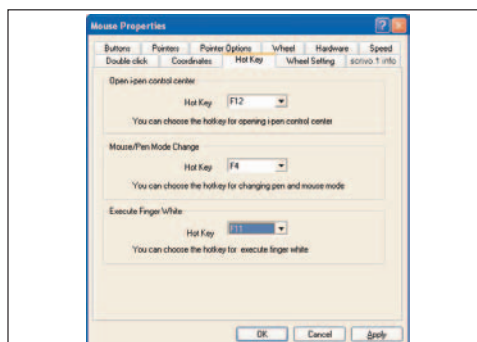
scrivo.1 info

An overview of **scrivo.1** driver version information and manufacturer information is shown here.



Hot Key

For user's convenience, a hot key feature has been added to open the **scrivo.1** control center and to switch between pen/mouse mode. The "Finger Note™" utility can also be used with a hot key. Users can open the **scrivo.1** control center or switch mode by pressing the key that has been set for the hotkey on any screen. The hot key's key can be customized by users. (Default: Open **scrivo.1** control center -> F12, Mouse/Pen Mode Change -> F4 Finger Note™ ->F6).



5.3 Changing mode and usage

Changing mode

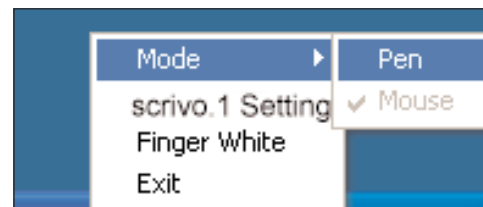
_ Changing mode using the hot key

Change mode using the hot key (**Standard: F4**). It will appear on the screen at the same time when mode has been changed as shown in the figure below.

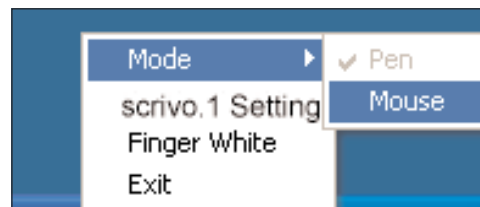


_ Changing mode by using System Tray

Click the **scrivo.1** icon and choose between Pen or Mouse mode as shown in the figure below. The check mark [✓] indicates current mode.



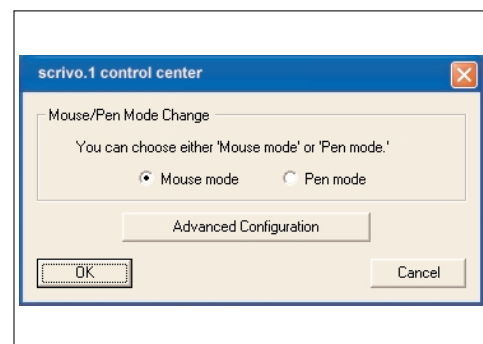
Changing Mouse mode to Pen mode



Changing Pen mode to Mouse mode

_ Changing mode by opening the **scrivo.1** Control Center

Open the **scrivo.1** Control Center by pressing the Hotkey (Default: F12). Choose between Pen mode/Mouse mode and click **[OK]**.



Restarting Driver

If **scrivo.1** is connected to the PC after the PC has been started, **scrivo.1** may not operate correctly. If so, end the **scrivo.1** driver in the System Tray and restart the driver. (Refer to the figure below)



Right Mouse Button

scrivo.1's push button, located on the front of **scrivo.1**, functions the same way as the right mouse button. The keyboard can be used as the right button function for those who are having difficulties using the push button. Place the cursor to where you want to click, click the tip once, and then press the keyboard key which located on the bottom right hand side of your keyboard for the right button function.



6. Using Finger Note™

6.1 What is Finger Note™? (Only for PC users)

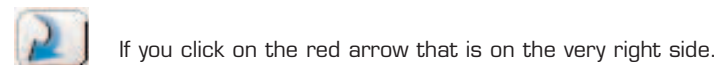
Finger Note™ is a tool which can be used to capture anything on your computer screen. You can also write and draw on the captured image, and save it to file.

6.2 Finger Note™ Basic Menu

The followings are Finger Note™'s running images



This menu appears when you first run the program.



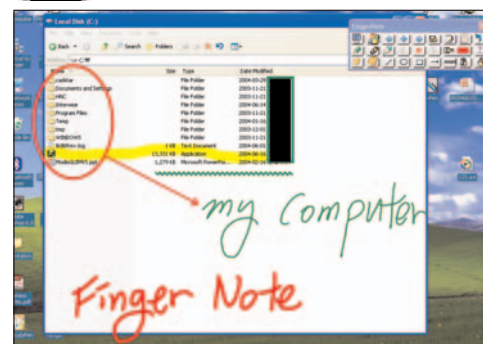
If you click on the red arrow that is on the very right side.



You can have more options and buttons like the image above. Once you click the red arrow button again, you get to see only basic menu like before.

6.3 Each button's use

a. Screen capture button

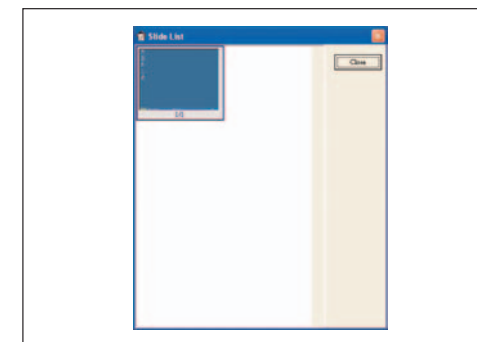


This button is to capture the whole computer screen in order to work on the captured image.

b. Windows Mode button

This button allows you to go back to the Windows mode from captured screen mode. Here, you can work on your computer in normal setting.

c. List button



This button enables you to browse through all previous captured screens and re-open them.

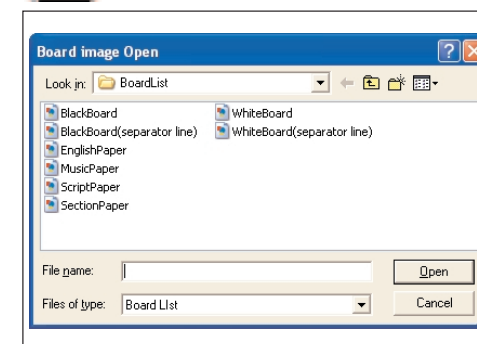


Arrow buttons can also be used to select an image from the list.


d. Save button

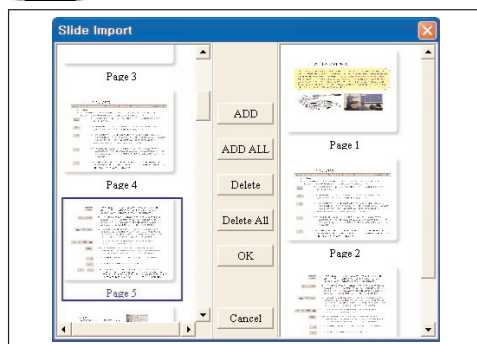
This button enables you to save captured images under a different file name. (Image file)

e. Board image button




You can load a saved template board image and work on it.

 f. Import documents button



This button imports other documents (*ppt, *doc, *xls, etc...) into the slide list.

 g. Pen button

This button enables you to write or draw lines after you capture a screen. Your cursor changes into a regular pencil shape.

 h. Highlight Pen button


This button has a highlight feature and is different from the pencil button. It can be used to highlight something in a particular spot.

 i. Pen diameter button


This button enables you to decide pencil/highlighter line thickness when you draw.

 j. Pen colour button

This is the colour preference button. You can choose your favourite colour and change your pen colour accordingly. (In System Properties, you can use all colours supported by Windows).

 k. Help button


This Button opens a program guide "Using Finger Note™"

 l. Mouse right click menu button


This button works like the right mouse click button such as opening Webster board menu. Once you click this and click mouse, it works like clicking the right button of your mouse for 5 secs. After 5 secs, it goes back to normal setting.

 m. Eraser button

This button enables you to erase writing or drawing in case you make mistakes. The left button is for erasing only the parts you want to erase. The right button is used to clear everything.

 n. Line button


This button enables you to draw a straight line. Left click your mouse and hold it down, then drag it to the point you want to draw a line.

 o. Circle button


Left click your mouse and hold it down, then drag it until you make the circle the size you want.

 p. Rectangle button

Left click your mouse and hold it down, then drag it until you make the right size of rectangle.

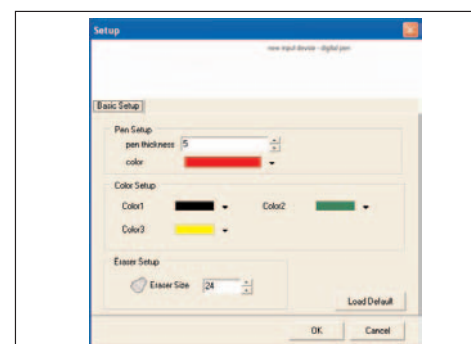
 q. Arrow button

Click this button and hold the mouse left button, then drag it to the point where you want to draw the arrow.

 r. Wave line button

This button is to underline or highlight your notes. Drag it as much as you want to draw wave line.

 s. property setting button



You can change the pen default colour, pen diameter, or 3 basic colours to your favourite choice. You can also adjust the eraser tool and colour size. If you click 'Load Default', everything changes to the original setting.

7. Troubleshooting

Although **scrivo.1** is designed to be highly reliable, you may occasionally experience a problem. The following will help you to identify the cause of possible problems and suggest solutions for related problems

Symptom	Cause	Solution
PC does not recognize scrivo.1 .	Is your pen cradle's USB cable connected to the USB port?	Connect scrivo.1 cradle's USB cable to the USB port.
	Is there a problem with your USB port?	Try a different USB port.
Cursor does not move.	Does the Bluetooth icon in the system tray not turn from red to white?	Reinstall Bluetooth software (refer to page 11).
	Is the Bluetooth icon in the system tray green?	If not, setup communication process between scrivo.1 and the receiver again (Refer to page 16).
	Press pen tip (first button). Does it function like a right button?	If not, setup scrivo.1 pen again (refer to page 24).
	Do you see a dark red light in front of the pen?	If not, setup scrivo.1 again.
Cursor moves, but the clicking function is not working.	Is pen tip damaged?	Replace the pen tip (Refer to page 9).
Cursor is too sensitive.	Have you installed scrivo.1 driver?	Install the driver again (Refer to page 24).
Cursor does not move the way I want it.	Are you using the pad provided with scrivo.1 package? (It may malfunction if used in a different environment.)	Use scrivo.1 on the pad provided with the scrivo.1 package for the best results.

8. Contact & Support

The plawa technical support team is eager to help you enjoy your new plawa product. If you are experiencing difficulties, please contact us at the following address:

plawa-feinwerktechnik GmbH & Co. KG
Bleichereistr. 18
73066 Uhingen, Germany

Telephone: +49(0)7161-93872-20
 Fax: +49(0)7161-93872-60
 Website: <http://www.plawa.com>
 Online-service: support@plawa.com

Do you have any comments or suggestions? If so, we would love to hear from you! Please visit our website and fill out the contact form or you can send us a mail to the address above. Your comments and suggestions help make our products better and enhanced to fit your needs.

Thank you for purchasing this plawa-product.

Free Manuals Download Website

<http://myh66.com>

<http://usermanuals.us>

<http://www.somanuals.com>

<http://www.4manuals.cc>

<http://www.manual-lib.com>

<http://www.404manual.com>

<http://www.luxmanual.com>

<http://aubethermostatmanual.com>

Golf course search by state

<http://golfingnear.com>

Email search by domain

<http://emailbydomain.com>

Auto manuals search

<http://auto.somanuals.com>

TV manuals search

<http://tv.somanuals.com>