

## ! CAUTION: TO AVOID BATTERY LEAKAGE

1. As with all small batteries, the batteries used in this toy should be kept away from small children who still put things in their mouths. If they are swallowed, promptly see a doctor and have the doctor phone (202) 625-3333 collect. In other countries, have the doctor call your local poison control center.
2. Make sure the batteries are inserted correctly and always follow the toy and battery manufacturers' instructions;
3. Do not mix old and new batteries or alkaline, standard (carbon-zinc) or rechargeable (nickel-cadmium) batteries;

## IMPORTANT: BATTERY INFORMATION

Please retain this information for future reference. Batteries should be replaced by an adult.

## ! CAUTION:

1. Always follow the instructions carefully. Use only batteries specified and be sure to insert item correctly by matching the + and - polarity markings.
2. Do not mix old batteries and new batteries or standard (carbon-zinc) with alkaline batteries.
3. Remove exhausted or dead batteries from the product.
4. Remove batteries if product is not to be played with for a long time.
5. Do not short circuit the supply terminals.
6. Should this product cause, or be affected by, local electrical interference, move it away from other electrical equipment. Reset (switching off and back on again or removing and re-inserting batteries) if necessary.
7. RECHARGEABLE BATTERIES: Do not mix these with any other types of battery. Always remove from the product before recharging. Recharge batteries under adult supervision. DO NOT RECHARGE OTHER TYPES OF BATTERIES.
8. As with all small items, these batteries should be kept away from children. If swallowed, seek medical attention immediately.

### FCC STATEMENT

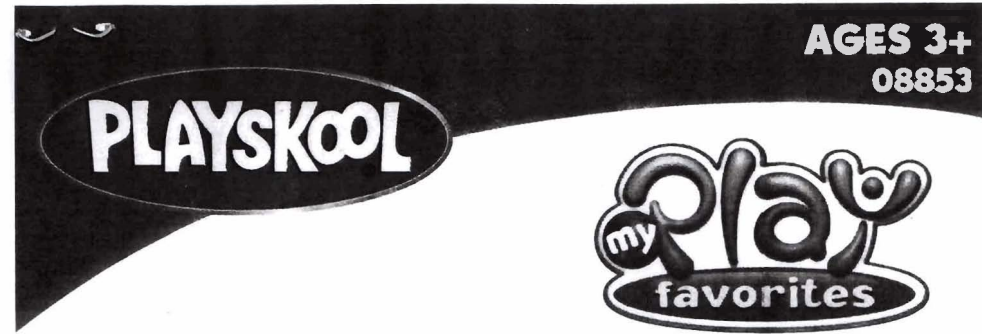
This device complies with part 15 of the FCC Rules. Operation is subject to the following two conditions: (1) This device may not cause harmful interference, and (2) this device must accept any interference received, including interference that may cause undesired operation.

This equipment has been tested and found to comply with the limits for a Class B digital device, pursuant to part 15 of the FCC Rules. These limits are designed to provide reasonable protection against harmful interference in a residential installation. This equipment generates, uses and can radiate radio frequency energy, and, if not installed and used in accordance with the instructions, may cause harmful interference to radio communications. However, there is no guarantee that interference will not occur in a particular installation. If this equipment does cause harmful interference to radio or television reception, which can be determined by turning the equipment off and on, the user is encouraged to try to correct the interference by one or more of the following measures:

- Reorient or relocate the receiving antenna.
- Increase the separation between the equipment and the receiver.
- Consult the dealer or an experienced radio/TV technician for help.

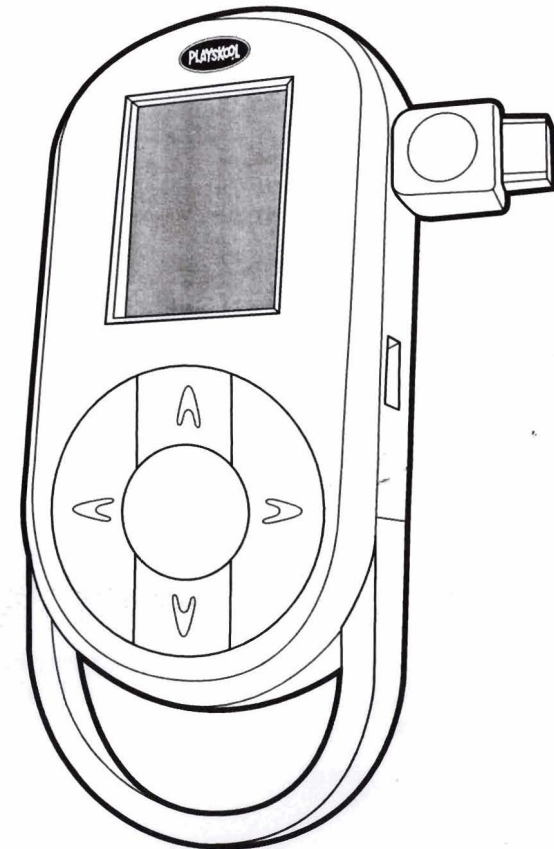
© 2006 Hasbro. All Rights Reserved.  
TM & © denote U.S. Trademarks  
08853

Download from [www.SoftManuals.com](http://www.SoftManuals.com). All Manuals Search And Download.



AGES 3+  
08853

## Dance Along MP3™



Thank you for choosing this  
unique PLAYSKOOL toy!

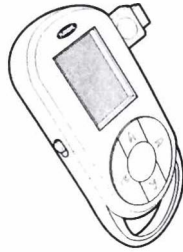
 **x3** 1.5V AAA/R03 size  
**BATTERIES INCLUDED**

Replace with 3 x 1.5V "AAA" or R03 size batteries.  
Alkaline batteries recommended. Phillips/cross head  
screwdriver (not included) needed to insert batteries.

## TO PLAY IN "MUSIC" MODE

Please follow these steps to play lots of groovy tunes!

**NOTE:** Before you start "music" mode, be sure that the toggle switch on the side of the toy is in the up position as shown.



1. Turn the toy on by pressing any button.

**NOTE:** This toy will display the "Classical" playlist the first time it is turned on.

2. Use the left/right arrows to choose a music category (classical, rock, etc.) as shown. The music categories are:



3. Once you have chosen a category, you can choose to:

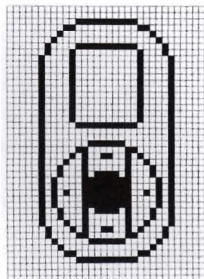
I. Play a song

II. "Download" a song

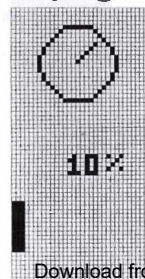
- I. To play a song, use the up and down arrows to highlight a number. Once the number you want is highlighted, press the center button to play the selected song. A cool animation will accompany your music selection! Once the song has ended, you will go back to the category screen and will have the option to select another song or category.
- II. To "download" a song, select the category to which you would like to add the new song. Pull out the "downloading" cord from the right-hand side of the toy as shown. Plug the "downloading" cord into the "downloading" port as shown.



You will then see on the screen a picture that looks like this:

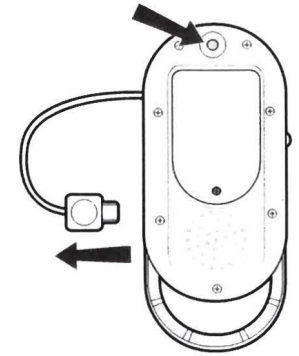


Press the center button to "download" a song and you will see the following screen to let you know that the "download" is in progress:



When the "download" is complete, you will see a smiley face looking back at you! Once the "download" is complete, remove the "download" plug and press the release button to retract the cord.

4. Once the "download" plug has been removed, you will be taken to the "download" screen and your newly added song will be at the bottom of the list. Press the round button to hear your new song!



## TO PLAY IN "DANCE" MODE

Please follow these steps to play tunes and move along to them.

1. On the side of the toy, you will see a toggle switch. Press it down to engage "dance" mode.
2. In this mode, when you play back any song, you will have to dance, shake and keep the player moving in order to keep the music going!

**NOTE:** To listen back to an entire song without any movement, please make sure that the music player is in "music" mode (switch up).

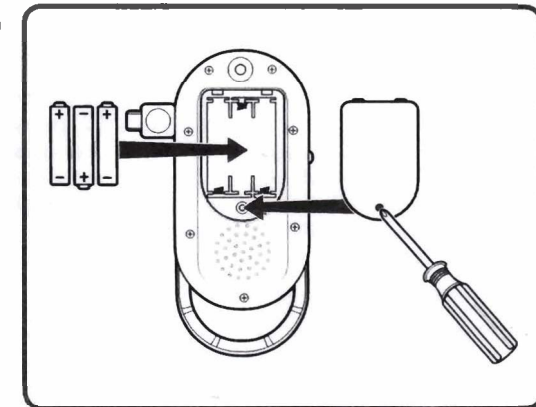
## OTHER FEATURES

- As a song continues to play, you can scroll through the category and song lists at the same time.
- This toy will automatically shut off after 2 minutes of inactivity.

**NOTE:** This toy is pre-loaded with three songs in each musical category. When you change the batteries, any newly downloaded songs will not re-appear and will have to be "downloaded" again from the memory.

## TO INSTALL BATTERIES

Use a Phillips/cross head screwdriver (not included) to loosen screw in battery compartment door (screw remains attached to door). Remove door. Remove and discard old batteries. Insert 3 fresh 1.5V "AAA" or R03 size batteries. Alkaline batteries recommended. Replace door and tighten screw.



## Free Manuals Download Website

<http://myh66.com>

<http://usermanuals.us>

<http://www.somanuals.com>

<http://www.4manuals.cc>

<http://www.manual-lib.com>

<http://www.404manual.com>

<http://www.luxmanual.com>

<http://aubethermostatmanual.com>

Golf course search by state

<http://golfingnear.com>

Email search by domain

<http://emailbydomain.com>

Auto manuals search

<http://auto.somanuals.com>

TV manuals search

<http://tv.somanuals.com>