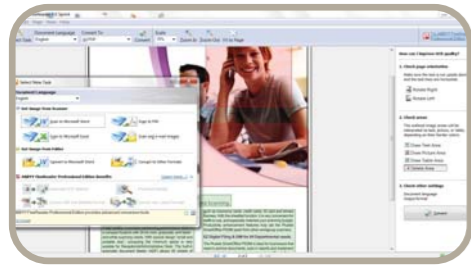


SmartOffice PS386

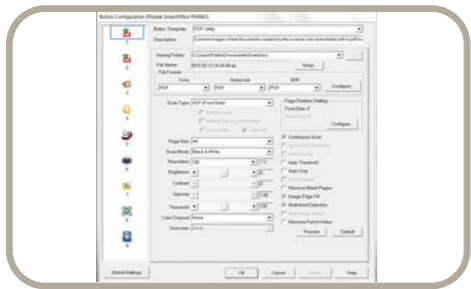
❖ SOFTWARE



Powered by
ABBYY®

ABBYY FineReader 9.0 Sprint

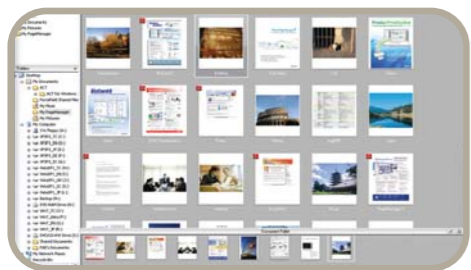
Unlocks the data inside paper-based documents, images and PDF files with enhanced accuracy that eliminates the need for retyping and reformatting. Tool that increases your productivity and efficiency which comes with simple user interface and supports recognition up to 183 languages.



DocAction

Plustek DocAction

Button utility to simplify document scanning. DocAction enables you to specify your personalized scanning configuration settings and scan documents with the touch of a button. Scanned documents are automatically sent directly to Printer, Email, Folder or FTP. DocAction also enables you to scan directly to many imaging and document management applications. DocAction saves scanned documents in all common imaging formats including: JPEG, TIFF, and PDF.



Presto! PageManager 9

NewSoft Presto! PageManager

Presto! PageManager 9 SE is an easy to use, front-end page client that provides for all your documents. Capabilities include Capture, Preview, Convert and Deliver all your paper and electronic documents to a designated location. You simply drag-&-drop to stack or merge files, or use the embedded OCR (Optical Character Recognition) feature to convert them to a searchable PDF. feature to convert them to a searchable PDF.

Hardware Requirements

Pentium IV 2.0 GHz processor (Pentium IV 3.0 GHz processor recommended)
CD-ROM Driver
One available USB Port (USB 2.0 recommended)
1GB RAM or higher recommended
800 MB free HDD space (1 GB or larger recommended)



Specification

Image Sensor	CCD x 2
Optical Resolution	600 dpi
Hardware Resolution	600 x 600 dpi
ADF Capacity	1. 50 sheets (A4/ Letter, 70 g/m ² or 18 Lbs), Max. thickness under 5mm (0.2"). 2. 20 sheets (Business Cards). 3. Plastic Card, Max. thickness under 1.2 mm. Note: Maximum ADF capacity varies, depending upon paper weight.
Scanning Speed (ADF)	25 ppm/ 50 ipm (Grayscale mode, 200 dpi, A4 Portrait) 25 ppm/ 50 ipm (B&W mode, 200 dpi, A4 Portrait) 20 ppm/ 40 ipm (Color mode, 200 dpi, A4 Portrait) Note: Results may vary depending upon your scanning application, computer processor and system memory.
Scanning Area (W x L)	Max. 216 x 1270 mm (8.5" x 50") Min. 13.2 x 13.2 mm (0.52" x 0.52")
Acceptable Paper Sizes (W x L)	Max. 220 x 1300 mm (8.66" x 51") Min. 50.8 x 50.8 mm (2" x 2")
Acceptable Paper Weight (Thickness)	50 to 105 g/m ² (14 to 28 Lbs)
Daily Duty Scan (Sheets)	3,000
Roller Lifetime (Scans)	100,000
Pad Lifetime (Scans)	20,000
Action Button	3 Buttons: Up, Down, Scan. 9 Function Keys: Scan, PDF, OCR, File, E-Mail, Copy, BCR, FTP, DI Capture. All Customizable.
Power Supply	24 Vdc/ 0.75 A
Interface	USB 2.0
Net Weight	1.66 Kgs (3.66 Lbs)
Dimensions (W x D x H)	263 x 128 x 148 mm (10.36" x 5.02" x 5.83")
Protocol	TWAIN Compliant
OS	Windows 2000 / XP / Vista / 7

Headquarters: sales@plustek.com

plustek

SmartOffice Series

SmartOffice PS386

Improved paper handling, speed, imaging and usability.
For **front desk and small office** use.



The 25ppm/50ipm Plustek SmartOffice PS386S document scanner is designed with the image quality, paper handling and reliability required by the most demanding business users but at a price point attractive to home and SOHO users. The small size and footprint of the SmartOffice PS386 make it appropriate for small business, office, front desk or portable scanning tasks.

❖ KEY FEATURES

- **25ppm/50ipm scan speed in color mode**
- **Automatically wakes up when documents are inserted in the feeder**
- **Scans rigid cards including insurance cards, ID cards, drivers licenses etc**
- **Scans documents up to 50" long**
- **50 sheet Automatic Document Feeder**
- **Single-touch customizable button automates up to 3 frequent scanning jobs (e.g., Scan to Searchable PDF, Scan to file, email, network share, copy, etc.)**
- **Advanced image enhancement to automatically straighten and rotate pages, adjust brightness, detect color, and crop images minimizes file size and increase OCR accuracy.**
- **No warmup time. Instant On LED illumination.**
- **Small footprint – easily transportable and fits in crowded office**
- **3000 page per day duty cycle**



Reliable Paper Handling

A redesigned 50 page Automatic Document Feeder with a 3000 page per day duty enable the SmartOffice PS340S to be used in any application requiring frequent document and rigid card scanning.



Versatile Paper Handling Ability

Scans business documents up to 50" long and rigid cards, such as ID cards and drivers licenses, up to 1.2mm thick, without operator adjustments. Mixed batches of documents can be scanned without sorting thanks to the class leading paper handling and image processing.



Easy-to-Use

Single-touch customizable button automates up to 9 frequent scanning jobs (e.g., Scan to PDF, Scan to file, email, network share, copy, etc.) The innovative automatic wake-up function turns the scanner on as soon as documents are placed in the feeder.



Compatible with most imaging applications

Industry standard TWAIN and WIA drivers combined with TIF, JPG, PDF and Microsoft Office file formats ensure compatibility with thousands of scanning and imaging programs. ABBYY FineReader Sprint is included to easily create and manage searchable PDFs at the touch of a button. Built in image processing insures the highest image quality, reduces rescans, increases OCR accuracy and now includes automatic color detect.

1 Auto Threshold
Automatically threshold the current image into a binary black and white image.

2 Auto Rotate
Automatically rotates document based on the contents of the document.

3 Auto Crop & Deskew
Automatically straightens and crops image to the documents actual size.

4 Auto Mode
Automatically detects document color and scans document in color, grayscale or black & white mode.

5 Multi-Image Output
Scans and saves documents in 2 or 3 color modes at same time.

6 Color Dropout Removes red, green or blue color when scanning forms.

7 Blank Page Removal Automatically removes blank pages without manual editing.



Duplex scanning at speeds up to 25 page per minute in Grayscale mode.



Effective scanning with large Automatic Document Feeder up to 50 pages.



Digitalize paper business cards into easily-managed and sorted contacts, and turn your business cards into information.



Scans embossed rigid cards such as ID cards, insurance cards, license and credit cards up to 1.2mm. Perfect for vertical applications such as healthcare, pharmacy, accounting, hospitality, etc.



Save paper documents as searchable PDFs at the touch of a button and find your information faster.



Easily upload files or scanned images to a compatible server of your choice including FTP servers, Google Documents, Microsoft SharePoint, Box, Dropbox and Twitter.

Free Manuals Download Website

<http://myh66.com>

<http://usermanuals.us>

<http://www.somanuals.com>

<http://www.4manuals.cc>

<http://www.manual-lib.com>

<http://www.404manual.com>

<http://www.luxmanual.com>

<http://aubethermostatmanual.com>

Golf course search by state

<http://golfingnear.com>

Email search by domain

<http://emailbydomain.com>

Auto manuals search

<http://auto.somanuals.com>

TV manuals search

<http://tv.somanuals.com>