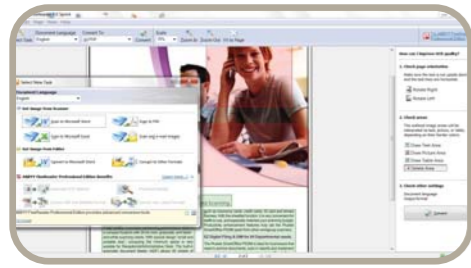


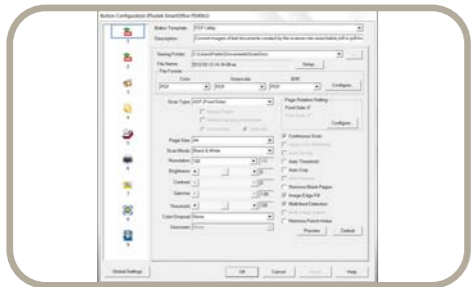
❖ SOFTWARE



Powered by
ABBYY®

ABBYY FineReader 9.0 Sprint

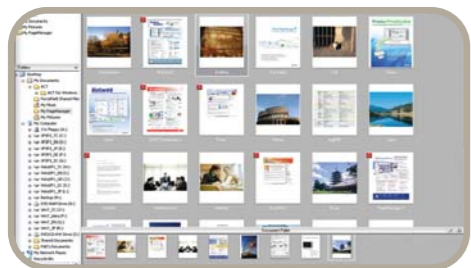
Unlocks the data inside paper-based documents, images and PDF files with enhanced accuracy that eliminates the need for retyping and reformatting. Tool that increases your productivity and efficiency which comes with simple user interface and supports recognition up to 183 languages.



DocAction

Plustek DocAction

Button utility to simplify document scanning. DocAction enables you to specify your personalized scanning configuration settings and scan documents with the touch of a button. Scanned documents are automatically sent directly to Printer, Email, Folder or FTP. DocAction also enables you to scan directly to many imaging and document management applications. DocAction saves scanned documents in all common imaging formats including: JPEG, TIFF, and PDF.



Presto! PageManager 9

NewSoft Presto! PageManager

Presto! PageManager 9 SE is an easy to use, front-end page client that provides for all your documents. Capabilities include Capture, Preview, Convert and Deliver all your paper and electronic documents to a designated location. You simply drag-&-drop to stack or merge files, or use the embedded OCR (Optical Character Recognition) feature to convert them to a searchable PDF. feature to convert them to a searchable PDF.

Hardware Requirements

- Pentium IV 2.0 GHz processor (Pentium IV 3.0 GHz processor recommended)
- CD-ROM Driver
- One available USB Port (USB 2.0 recommended)
- 1GB RAM or higher recommended
- 800 MB free HDD space (1 GB or larger recommended)

Specification

Image Sensor	CCD x 2
Light Source	LED
Optical Resolution	600 dpi
Hardware Resolution	600 x 600 dpi
ADF Capacity	1. 50 sheets (A4/ Letter, 70 g/m ² or 18 Lbs), Max. thickness under 5mm (0.2"). 2. 20 sheets (Business Cards). 3. Plastic Card, Max. thickness under 1.2 mm. Note: Maximum ADF capacity varies, depending upon paper weight.
Scanning Speed (ADF)	30 ppm/ 60 ipm (Grayscale mode, 200 dpi, A4 Portrait) 30 ppm/ 60 ipm (B&W mode, 200 dpi, A4 Portrait) 20 ppm/ 40 ipm (Color mode, 200 dpi, A4 Portrait) Note: Results may vary depending upon your scanning application, computer processor and system memory.
Scanning Area (W x L)	Max: 216 x 2500 mm (8.5" x 98.42") Min: 13.2 x 13.2 mm (0.52" x 0.52")
Acceptable Paper Sizes (W x L)	Max: 220 x 2530 mm (8.66" x 99.60") Min: 50.8 x 50.8 mm (2" x 2")
Acceptable Paper Weight (Thickness)	50 to 105 g/m ² (14 to 28 Lbs)
Multi-feed Detection	With ultrasonic technology
Daily Duty Scan (Sheets)	4,000
Roller Lifetime (Scans)	300,000
Pad Lifetime (Scans)	50,000
Action Button	3 Buttons: Up, Down, Scan. 9 Function Keys: Scan, PDF, OCR, File, E-Mail, Copy, BCR, FTP, DI Capture. All Customizable.
Power Supply	24 Vdc/ 0.75 A
Interface	USB 2.0
Net Weight	1.66 Kgs (3.66 Lbs)
Dimensions (W x D x H)	263 x 128 x 148 mm (10.36" x 5.02" x 5.83")
Protocol	TWAIN Compliant
OS	Windows 2000 / XP / Vista / 7 / 8

Headquarters: sales@plustek.com



As an international ENERGY STAR Partner, Plustek has determined that this product meets the international ENERGY STAR Program for energy efficiency.

SmartOffice PS3060U



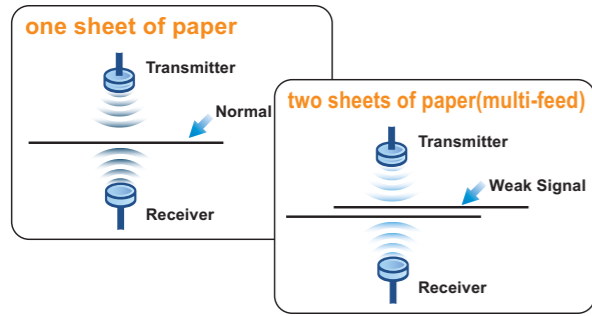
Improved paper handling, reliable, cost effective document scanner



The Plustek SmartOffice PS 3060U is a 30 page per minute, duplex grayscale document scanner. With ultrasonic misfeed detection it ensures all of your critical documents are imaged correctly. The SmartOffice PS3060U document scanner is designed with the image quality, paper handling and reliability required by the most demanding business users but at a price point attractive to SMB and SOHO users. The small size and footprint of the SmartOffice PS3060U make it appropriate for small business, office, front desk or portable scanning tasks.

❖ KEY FEATURES

- 30ppm/60ipm scan speed in grayscale mode
- 4000 page per day duty cycle
- Ultrasonic multi-feed detection
- Improved high quality imaging and robust paper handling
- Scans long documents up to 200" (5080mm)
- 50 sheet Automatic Document Feeder
- Small footprint – easily transportable and fits in crowded office
- Single touch scanning to popular formats including Searchable PDF, PDF/A, Word, Excel, JPEG and TIFF
- Automatically wakes up when documents are inserted in the feeder
- Scans rigid cards including insurance cards, ID cards, drivers licenses etc



Intelligent Misfeed Function

A redesigned 50 page Automatic Document Feeder with a 4000 page per day duty enable the SmartOffice PS3060U to be used in any application requiring frequent document and rigid card scanning. With the built-in ultrasonic multi-feed detection capability, the SmartOffice PS3060U scanner allows you to set overlapped paper by detecting paper thickness between documents. When multi-feed is detected a warning message will be prompted. By this feature is turned on so that it automatically improves the scanning experience and results.



Versatile Document Handling

Combining fast document feeding with the advantage of robust paper handling, the SmartOffice PS3060U is an ideal choice for workgroup who have a demanding workload and limited budget. Plastic and rigid cards such as ID cards, Drivers Licenses, Membership Cards, Insurance Cards and even log documents up to 200" are scanned without additional adjustments or additional set up. Mixed batches of documents can be scanned without sorting thanks to the class leading paper handling and image processing.



Easy-to-Use

With Plustek's DocAction exclusive software application, users only need to properly place the document on the scanner, the press the "Scan" button. What is best, the scanned image can be directly sent to your desirable destination applications. The features allow you to directly scan to searchable PDF, PDF/A, OCR and BCR, and also access programs seamlessly, such as Excel, Word, Email, Copy and Save to File directly.



Exceptional Productivity

The SmartOffice PS3060U features one of the most advanced document feeding and separation system in the industry. Advanced Image Processing automatically detects color documents, adjusts, straightens, and crops documents with no operator intervention. There is no need to separate documents by size or type, higher OCR accuracy and fewer rescans. Industry standard TWAIN and WIA drivers ensure compatibility with thousands of image enabled applications.

1 Auto Threshold

Automatically threshold the current image into a binary black and white image.

2 Auto Rotate

Automatically rotates document based on the contents of the document.

3 Auto Crop & Deskew

Automatically straightens and crops image to the documents actual size.

4 Auto Mode

Automatically detects document color and scans document in color, grayscale or black & white mode.

5 Multi-Image Output

Scans and saves documents in 2 or 3 color modes at same time.

6 Color Dropout

Removes red, green or blue color when scanning forms.

7 Blank Page Removal

Automatically removes blank pages without manual editing.

30 PPM
60 IPM

Fast duplex scanning at speeds up to 30 pages per minute in Grayscale mode.

50 pages

Effective scanning with large Automatic Document Feeder up to 50 pages.

BUSINESS CARD

Digitize paper business cards into easily-managed and sorted contacts, and turn your business cards into information.

ID CARD

Scans embossed rigid cards such as ID cards, insurance cards, drivers licenses and credit cards up to 1.2mm. Perfect for vertical applications such as healthcare, pharmacy, accounting, hospitality, etc.

SEARCHABLE PDF

Save paper documents as searchable PDFs at the touch of a button and find your information faster.

CLOUD

Allows you to easily upload files or scanned images to a compatible server of your choice including Google Docs, Microsoft SharePoint, Box, Dropbox, Twitter and FTP servers.

Free Manuals Download Website

<http://myh66.com>

<http://usermanuals.us>

<http://www.somanuals.com>

<http://www.4manuals.cc>

<http://www.manual-lib.com>

<http://www.404manual.com>

<http://www.luxmanual.com>

<http://aubethermostatmanual.com>

Golf course search by state

<http://golfingnear.com>

Email search by domain

<http://emailbydomain.com>

Auto manuals search

<http://auto.somanuals.com>

TV manuals search

<http://tv.somanuals.com>