



## PORT-Noteworthy Slim Line CD/DVD



***Dear user!***

Welcome to the **PORT DVD** installation. Before you install the device, we would like to ask you to carefully read the following items and take them into account, if applicable, when making changes to your system.

With the purchase of this device you have acquired a drive that can be connected to any PC with the appropriate interface.

***Warning!***

All rights reserved. The products named in this manual are only used for identification purposes and may be trademarks or registered trademarks of the respective companies. This device was designed for home or office use.

Warning! This device is equipment according to EN55022 class A. This equipment can cause radio disturbances in a residential area. If this is the case, the user has to take appropriate measures and assume all responsibility and costs. It may not be used near or with any life-sustaining systems.

The manufacturer is not liable for any damages that may occur from the use of a PORT DVD system. All rights reserved. We reserve the right to make changes as technology requires.



**FEDERAL COMMUNICATIONS COMMISSION - DECLARATION OF CONFORMITY**

This equipment has been tested and found to comply with the limits for a Class B digital device, pursuant to part 15 of the FCC Rules, and RS 210 Regulations (Canada). These limits are designed to provide reasonable protection against harmful interference in a residential area. This equipment generates, uses, and can radiate radio frequency energy and if, not installed and used in accordance with the instructions, may cause harmful interference to radio communications. However, there is no guarantee that interference will not occur in a particular installation. If this equipment does cause harmful interference to radio or television reception, which can be determined by running the equipment off and on, the user is encouraged to try to correct the interference by one or more of the following measures:

- Reorient or relocate the receiving antenna.
- Increase separation between the equipment and receiver.
- Connect the equipment to an outlet on a circuit different from that to which the receiver is connected.
- Consult the dealer or an experienced radio technician for help.

**USER'S MANUAL**

General Information ..... page 4

Safety measures and operating hints ..... page 5

**CHAPTER 1:**

Hardware Installation ..... page 6

**CHAPTER 2:**

Device description ..... page 7

**CHAPTER 3:**

Software Installation ..... page 8

    under Windows 95/98 ..... page 8

    under Windows NT 4.0 ..... page 10

**CHAPTER 4:**

Daily use of the PORT DVD ..... page 12

**CHAPTER 5:**

Reference Section ..... page 13

Specifications of the PORT DVD ..... page 15

## **General**

Reliable performance of the PORT DVD can not be guaranteed for configurations that do not meet the following requirements.

### ***Hardware Requirements***

In order to use the PORT DVD you need a computer system with the following minimum requirements:

- 486DX PC or higher
- 8 MB RAM or higher, depending on the operating system
- at least a floppy disk drive and a hard disk
- PCMCIA Card interface (type II or higher)

### ***Software Requirements***

The PORT DVD is set up for use of the following operating systems:

- Windows 95/98
- Windows NT 4.0

### ***Media Formats***

The PORT DVD reads formats according following CD and/or DVD standards:

- MS-DOS data CDs' (High Sierra, Mode 1 & Mode 2 complying with ISO 9660)
- Data – CDs' (Joliet)
- CD ROM XA
- Mixed Mode CDs'
- Kodak Photo CDs' (single and multisession)
- UDF (Universal Disc Format)
- Audio CDs'
- DVD ROM
- DVD-R, CDI, CD-Midi, CD-R, CD-RW

### ***Contents***

The contents of the PORT DVD for PCs includes:

- PORT DVD drive
- an AC Adapter
- a manual
- PCMCIA Card connection cable
- installation software on 3.5" floppy disk

## Safety measures and operating hints

- The tray of the media can be opened in the following modes with the Eject button :
  - in the running mode (Drive is supplied with power from the PC via PORT cable attached to the computer);Additionally, the tray can be opened at any time and in any mode by cautious insertion and pressing the "emergency-eject" (e.g. with a pointed object like a bent paper clip).
- The PORT DVD can be operated in either upright or horizontal state. It should possibly not be moved during operation.
- Operating the device should only take place within temperature ranges of 10 – 45 °C.
- After transporting the device, especially in low temperatures which can cause condensation to form, allow the PORT DVD unit to reach room temperature before operating.
- The PORT DVD should not be used in dusty and humid surroundings.
- Use only the included AC Adapter power cable, otherwise damage to the unit could occur.
- The PORT DVD should not be operated near other RF emitting devices such as consumer electronics as there is a potential for interference.
- The PORT DVD should not be operated near strong electromagnetic radiation source (loud speakers, Port DVD phones etc.)
- Please note that the DVD-ROM drive takes longer to identify the media, after placing it inside.

### Safety:

- **Never attempt to disassemble, adjust or repair the DVD-ROM drive as exposure to laser light or other safety hazards may result.**
- **This is a Class 1 Laser Product. This product complies with all applicable safety standards, DHHS Rules 21 CFR Chapter 1, Subchapter J. The laser beam generated is totally enclosed during all modes of normal operation, and no hazardous laser light is emitted from the drive.**

## **CHAPTER 1: Hardware installation**

1. Turn off the computer and all attached components.
2. Connect the included power supply cable to the rear panel of the device. Do not yet plug the power supply into the power outlet.
3. Connect the drive connector of the cable to the device.
4. Plug the PCMCIA Cable into any PCMCIA slot of your computer.
5. Now, plug the power supply of the device into a power outlet.
6. Turn on your computer again.
7. You can now begin installing the software.

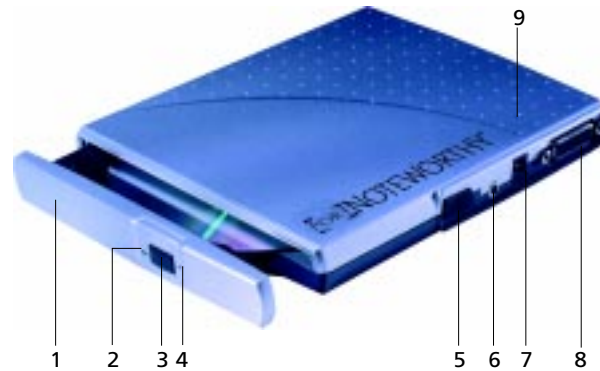


### ***"Plug&Play" with the PCMCIA Cable for Windows 95/98***

To use the PORT DVD drive for Windows 95/98, primary installation must be carried out only once, according to the following software installation.

The PORT PCMCIA Cable is Plug&Play compatible. If you work with Windows 95/98, you can attach the PCMCIA while the drive is in use. Your PORT DVD drive then appears under "My Computer". Likewise, you can remove the PCMCIA Cable while the drive is in use, by first cancelling it. The PORT DVD drive then disappears from "My Computer". To cancel the PCMCIA Cable, click on *"Start"*, *"Settings"*, *"Control Panel"*, *"PC Card (PCMCIA)"*. Highlight the PCMCIA and click on *"Stop"*. The PCMCIA Cable can be removed when the command "You may now safely remove the card" appears.

## CHAPTER 2: Device description



1	tray	5	selection of the power supply
2	access indicator	6	Audio out (line out) / headphone connection
3	CD/DVD-eject button	7	power cord connection
4	emergency eject	8	PCMCIA Cable
		9	LED display of the operational state

### ***Please note the following important details:***

The specific mode is indicated by an LED on the upper side of the device; see the following table for mode interpretations.

#### **1. ON/OFF - Switching:**

The PORT DVD will be always on when the unit is plugged into the AC Adapter and the switch is in the DC position. When the PORT DVD is not plugged into the AC Adapter and it is being powered through the PC Card slot then PORT DVD is on as long as the notebook is on, the PCMCIA Card is inserted, and the switch is in the "PC" position.

#### **2. Power supply via AC Adapter:**

The PORT DVD is powered from the external AC Adapter when switch (5) is in the "DC" position and the AC Adapter is connected.

#### **3. Power supply from the Notebook:**

Set the switch to the "PC" position. The PORT DVD will only receive power now from the notebook's PC Card slot.

#### **4. Playing Audio-CDs**

You can play audio CDs on your PORT DVD by using the CD Player application in Windows. To hear the audio you do need to connect either headphones to socket (6) of the PORT DVD or an audio cable to socket (6) of the PORT DVD and the Line In of your notebook.

**Power display mode of the PORT DVD**

The LED-Display of the PORT DVD blinks when the drive either is powered by the AC Adapter or by the Notebook. The LED-display blinks also, when the power supply of the computer is not sufficient. Operation is not possible.

**Switch positions and drive operation**

With the switch "PC" (5), the type of power supply can be selected. Please note the points in the Section Device Description on page 7.

- The tray for the media opens after pressing the eject button (3) on the front side of the device (abt 1cm), and thereafter fully open per hand to change the media.
- Should you wish to insert or remove a media when the drive is not in stand-by mode, you can unlock the tray by inserting a bent-open paper clip, or a similar pointed object, into the emergency eject hole (see page 7) until you feel resistance (a light touch does it). When pulling out the paper clip, the tray is unlocked and can be fully opened by hand.

## **CHAPTER 3: Software installation**

### **3.1 Software installation under Windows 95/98**

After connecting your PORT DVD for the first time, Windows 95/98 will inform you that new hardware has been found.

**Note:** *If Windows 95/98 does not display this message, check whether your computer's PCMCIA slot has been properly set. Open the "Control Panel" by clicking "Start" - "Settings" Double-click the icon "System" and select the tab "Device Manager". Under the entry "PCMCIA plug connection" ensure that the driver for your PCMCIA slot has been installed and activated and that no device conflict is displayed.*

Please observe the various installation procedures described below for different Windows versions.

#### **Windows 98**

1. Insert the PORT DVD disk containing the Windows 95/98 software.
2. Plug the PCMCIA Cable into any PCMCIA slot of your computer.
3. The dialog box "Add New Hardware Wizard" appears. Click on "Next".
4. The next dialog box shows the standard command "Search for the best driver for the device". Click on "Next".



5. In the next dialog box, the search for the driver is carried out. The standard command "Floppy disk drive" appears. Click on "Next".
6. The driver is then loaded from the disk. Click on "Next" to install the driver. Click "Finish" to complete the installation.
7. At the end of the installation procedure, a new icon for your PORT DVD will appear with a new drive letter in the folder "My Computer".

### **Windows 95b**

1. Insert the PORT DVD disk containing the Windows 95/98 software.
2. Plug the PCMCIA Cable into any PCMCIA slot of your computer.
3. The window "Updated Device Driver Wizard" appears. Confirm by pressing the button "Next".
4. Start the copy procedure by clicking "Finish". If prompted, insert the disk, click "OK", and then type "A:\" in the space provided and click "OK" again.
5. Click on "Yes" to restart the computer.
6. The folder "My Computer" will now have an icon for your PORT DVD device.

### **Windows 95a**

1. Insert the PORT DVD disk containing the Windows 95/98 software.
2. Plug the PCMCIA Cable into any PCMCIA slot of your computer and continue with "OK".
3. After the dialog box "New Hardware Found" appears, click the option "Driver from disk provided by hardware manufacturer".
4. Confirm the next window "Install from Disk" by clicking the button "OK".
5. The message "Inter disk" may appear prompting you to insert the PORT DVD installation disc Windows 95/98. Make sure that the disk is in the drive and confirm by clicking "OK".
6. Another window "Copying files" shows you from which path the installation is to be performed. Type into the input box "A:\", whether it is empty or contains another entry and then confirm by clicking "OK".
7. The copy procedure begins and you will be continuously informed about the installation status.
8. At the end of the installation procedure, a new icon for your PORT DVD drive will appear with a new drive letter in the folder "My Computer".

**Note:** Before you can start the setup program, you must have carried out the "Software Installation for Windows 95/98" in point 3.1.

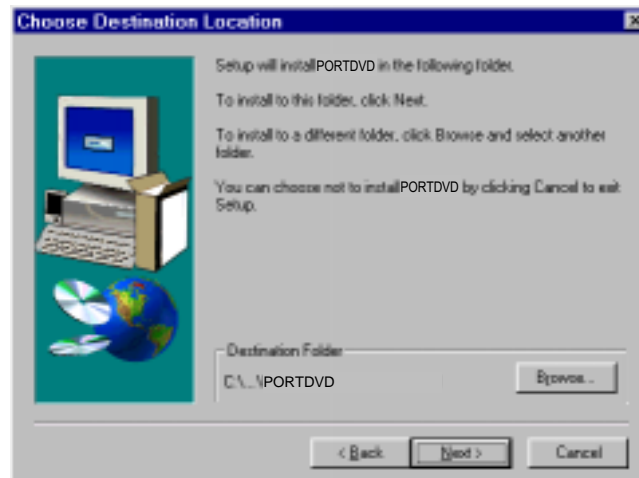
**Assigning the drive letter under Windows 95/98**

After successfully completing the installation of the PORT DVD drive, a new drive letter is assigned automatically (the first available letter after the internal hard drives). This can shift the drive letter of an internal drive (for example, 'D' to 'E'). If this leads to problems, it is possible to change the drive letter assignment as follows.

1. Click "Start" - "Settings" - "Control Panel".
2. Click "System".
3. Click "Device Manager" and then click "CD-ROM".
4. Click the PORTDVD drive, and then "Properties" - "Settings". (The currently assigned drive letter as well as the reserved drive letters will then be displayed).
5. Under Reserved Drive Letter enter a drive letter, for example, 'F' for the PORTDVD as the "Start drive letter" and 'F' again as the "Last drive letter".
6. Confirm your selection with "OK". When you restart your computer, the PORTDVD drive will be assigned the letter 'F' in the folder "My Computer".

**3.2 Software installation under Windows NT 4.0**

1. Insert the PORT DVD installation disk for Windows NT 4.0 operating system into your standard floppy drive.
2. Click "Start", "Run" and type "a:\setup.exe".
3. When you have accepted the agreement, a new window will appear. The setup program suggests "C:\Program\PORTDVD" as the standard default directory. (If you wish to copy the files into another directory, click "Browse" and enter the path name.) Confirm the chosen folder with "Continue".



- The setup program then suggests the entry "PORTDVD" as standard in the start menu of the program folder. (You also have the possibility to create your own folder.) Confirm the chosen entry with "Continue" and the files will then be installed onto your computer.
- The setup wizard will inform you of the installation process. Follow the on-screen instructions.



After you restart your computer, your PORT DVD drive will appear with a new drive letter under "My Computer". Click "Finish" to restart.

**Note:** Don't forget to remove the installation disk before restarting your computer.

## **CHAPTER 4: Daily use of the PORT DVD**

For a description of the PORT DVD, see page 7.

To insert or eject a media, press the eject button, which is only active when the system is ready-to-operate (see page 7).

When inserting a CD or DVD disc place printed side face up. The disc will need to be snapped down over the spindles.

Please do not touch the underside of the media as any kind of dirt might result in read errors or even uselessness.

A significant advantage of the PORT DVD is its portability. By connecting to the Cable interface it is very easy to operate the drive on different computers. In order to do so, it is necessary to install the drivers on every computer as described in Chapter 3.

The computer has to be restarted so that the PORT DVD can be detected.

### ***Operation of the PORT DVD***

A CD/DVD-ROM drive is seen by the operating system as a write-protected disk, so that the familiar commands such as DIR, TYPE etc. can be used.

Many CD/DVDs are shipped with their own utility programs which help you browse or run programs on the CD/DVD. To use these programs read the instructions that came with the CD/DVD.

To access Photo CDs you need special programs that you can order from your software dealer.

To play audio CDs you can use the Windows 95/98 CD Player application which provides the usual CD controls. But you also need to connect to the Audio Out jack on the PORT DVD drive. Refer to page 7 for additional information.

## CHAPTER 5: Reference Section

### ***General problems***

If you still have problems getting your PORT DVD drive to function properly then please check the following:

#### Hardware requirements:

- Does your system meets the hardware requirements? (see page 4)

#### Connecting the PORT DVD device:

- Is the PCMCIA Cable correctly connected to your computer and the PORT DVD device? Check if the Cable is plugged in correctly. The cable must be firmly seated!
- Is the drive getting power? Determine if the medium can be ejected and if the device is getting power when the system boots.

***If the PORT DVD is not connected to AC power and you are having power problems or problems finding the DVD drive unit, first try to use the PORT DVD with the AC Adapter. Stop the PCMCIA Card and remove from the Notebook. Connect the AC Adapter and set the switch to DC. Re-install the PCMCIA Card into the Notebook.***

If the computer locks up when the software is installed or when running software from the disc:

- Do not use memory manager such as QUEMM
- Turn off the computer's power management

If there is no sound, check if

- the headphones/speakers are correctly connected
- the cable is damaged
- the volume is up
- the audio software is installed

***Technical Support***

For additional assistance with your PORT-Noteworthy Slim Line CD/DVD contact us at:

**PH: 1-888-970-PORT or 1-330-593-3310**  
**FAX: 1-203-866-0221 (Attn: Technical Support)**  
**Email: [TechSupport@port.com](mailto:TechSupport@port.com)**  
**Web: [www.port.com](http://www.port.com)**

Check our web site [www.port.com](http://www.port.com) for Frequently Asked Questions and Driver updates.

Please have the following information on hand when you call:

- the serial number at the back of your PORT DVD and Cable
- the version of your installation disk
- the information on the power cord
- the version of your operating system and the software that has the problem
- an exact description of the error and any error messages and when they occur
- the name and model of your computer and any internal hardware
- Can you reproduce the problem at any time?
- Have you had this problem before? If it is a new problem, have you recently changed your system configuration?

## Specifications of the PORT DVD

**Average Access Time:** DVD-Mode: 180 ms  
CD-Mode: 120 ms

**max. Read speed\*:** DVD-Mode: 5,400 kB/s (4x DVD speed)  
CD-Mode: 3,000 kB/s (20x CD speed)

**Writing Formats:** DVD-ROM  
DVD-Video  
Data CD  
Audio CD  
CD-ROM XA  
Mixed Mode CD, Photo CD

**Data Buffer:** 256 kB

**Dimensions:**  
Length: 6.81" (17,3 cm)  
Width: 5.35" (13,6 cm)  
Height: 0.78" (2 cm)

**Weight:** 0.9 pounds (450 g)

**Connection to the computer:** Cable PCMCIA via PC Card slot

### Storage Capacity:

DVD-ROM type description	DVD-5	DVD-9	DVD-10	DVD-18
Capacity according to the manufacturer	4.7 GB	8,5 GB	9.4 GB	17 GB
Actual capacity	4.38 GB	7.96 GB	8.75 GB	15.92 GB
Written sides	1	1	2	2
Layers** per side	1	2	1	2

\* The maximum read speeds are only reached if data on the outer edge of the CD are read in constant succession. The actual data transfer rate achieved is also dependent on the type and configuration of the particular interface.

\*\* information-carrying layer

## Free Manuals Download Website

<http://myh66.com>

<http://usermanuals.us>

<http://www.somanuals.com>

<http://www.4manuals.cc>

<http://www.manual-lib.com>

<http://www.404manual.com>

<http://www.luxmanual.com>

<http://aubethermostatmanual.com>

Golf course search by state

<http://golfingnear.com>

Email search by domain

<http://emailbydomain.com>

Auto manuals search

<http://auto.somanuals.com>

TV manuals search

<http://tv.somanuals.com>