

# **Polar IrDA USB 2.0 Adapter and Bridge Driver User Manual**

# 1. General

Polar IrDA Adapter is designed for infrared data transfer between Polar heart rate monitors and other infrared products. No other use is intended or implied.

To use the Polar IrDA 2.0 Adapter and IrDA 2.0 Bridge Driver you need Windows® 98, Windows® ME, Windows® 2000 or Windows® XP Operations System on your computer. Make sure you have also updated to the latest Service Pack of Microsoft Windows®.

## 2. Driver Installation

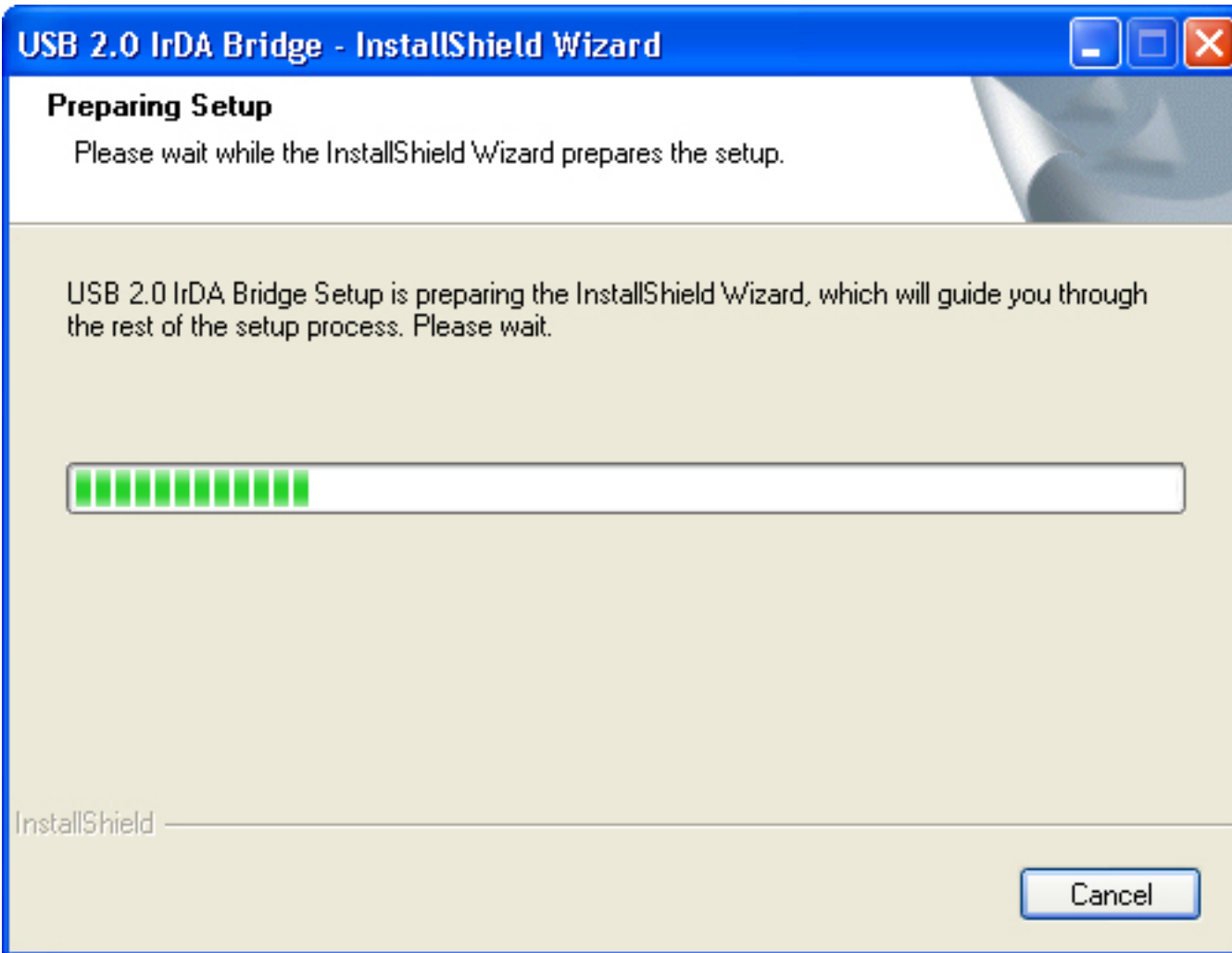
We recommend you start by installing the USB 2.0 IrDA Bridge Driver.

The Driver installation will start automatically when you select OK.

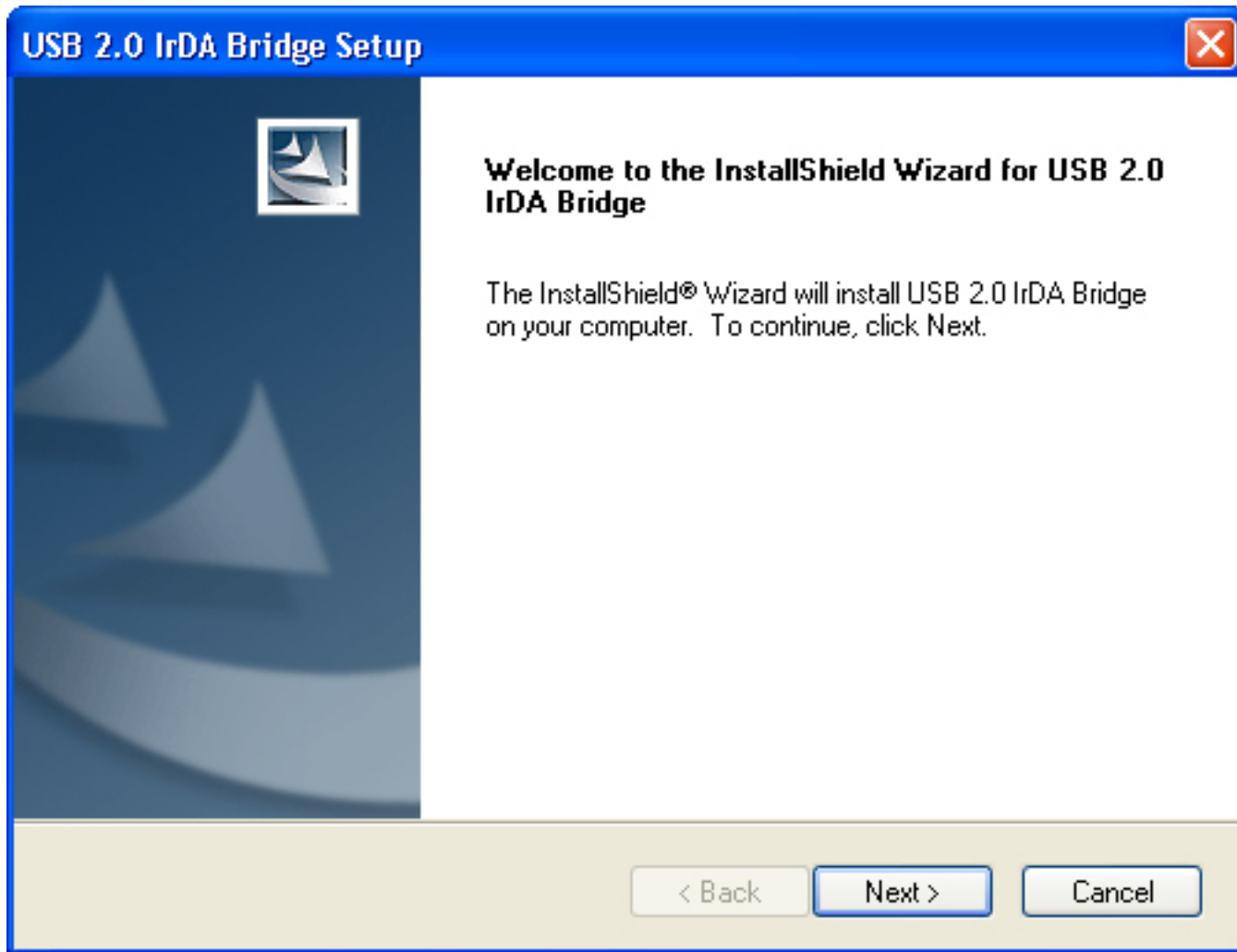
However, if it does not, open the CD Driver IR721 and select **Autorun**. On Windows Operation System, select folder **WinDriver** and **setup.exe** file.

The instructions from here on only work under Windows Operation System.

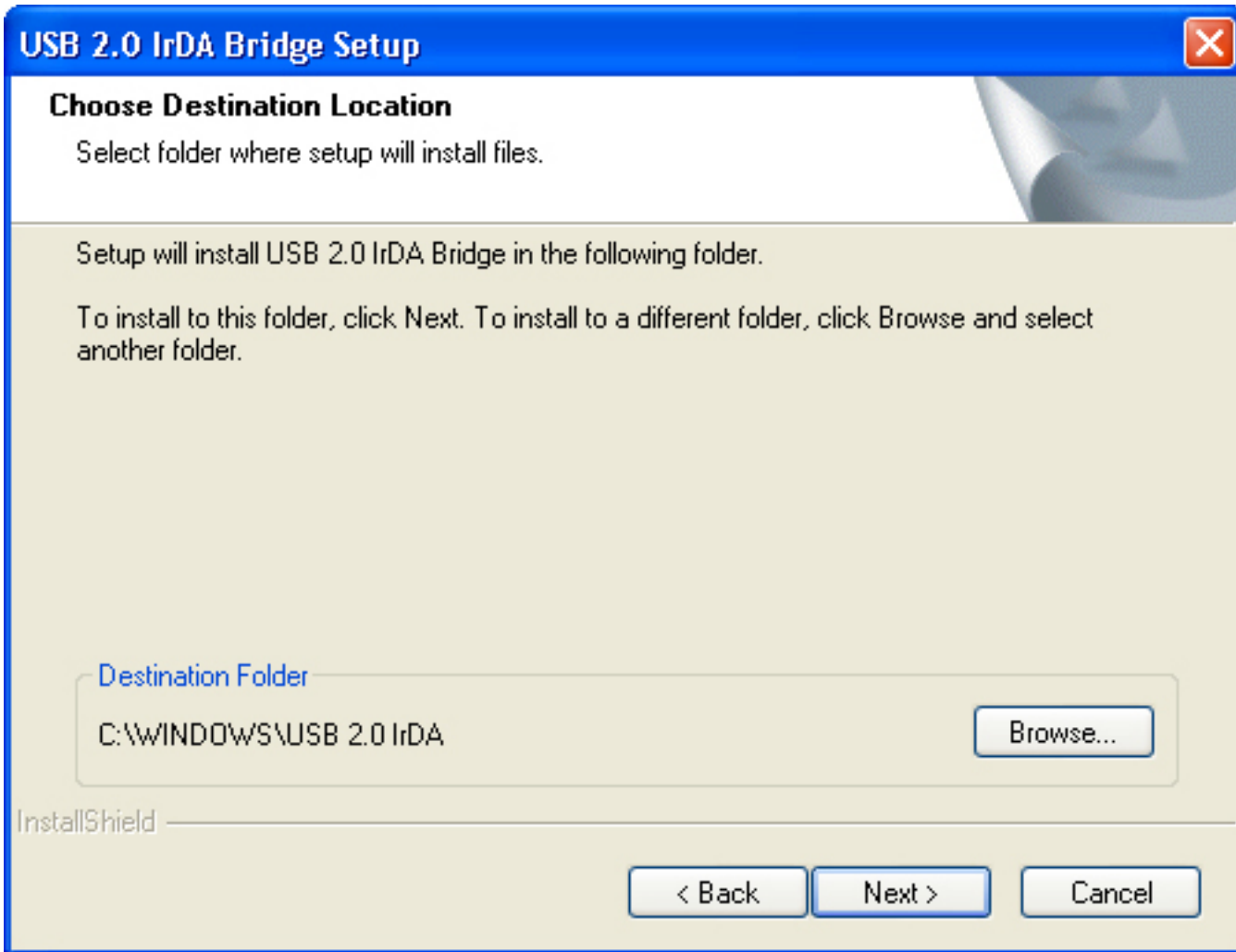
In automatic installation the following popup screen appears briefly indicating the installation has started:



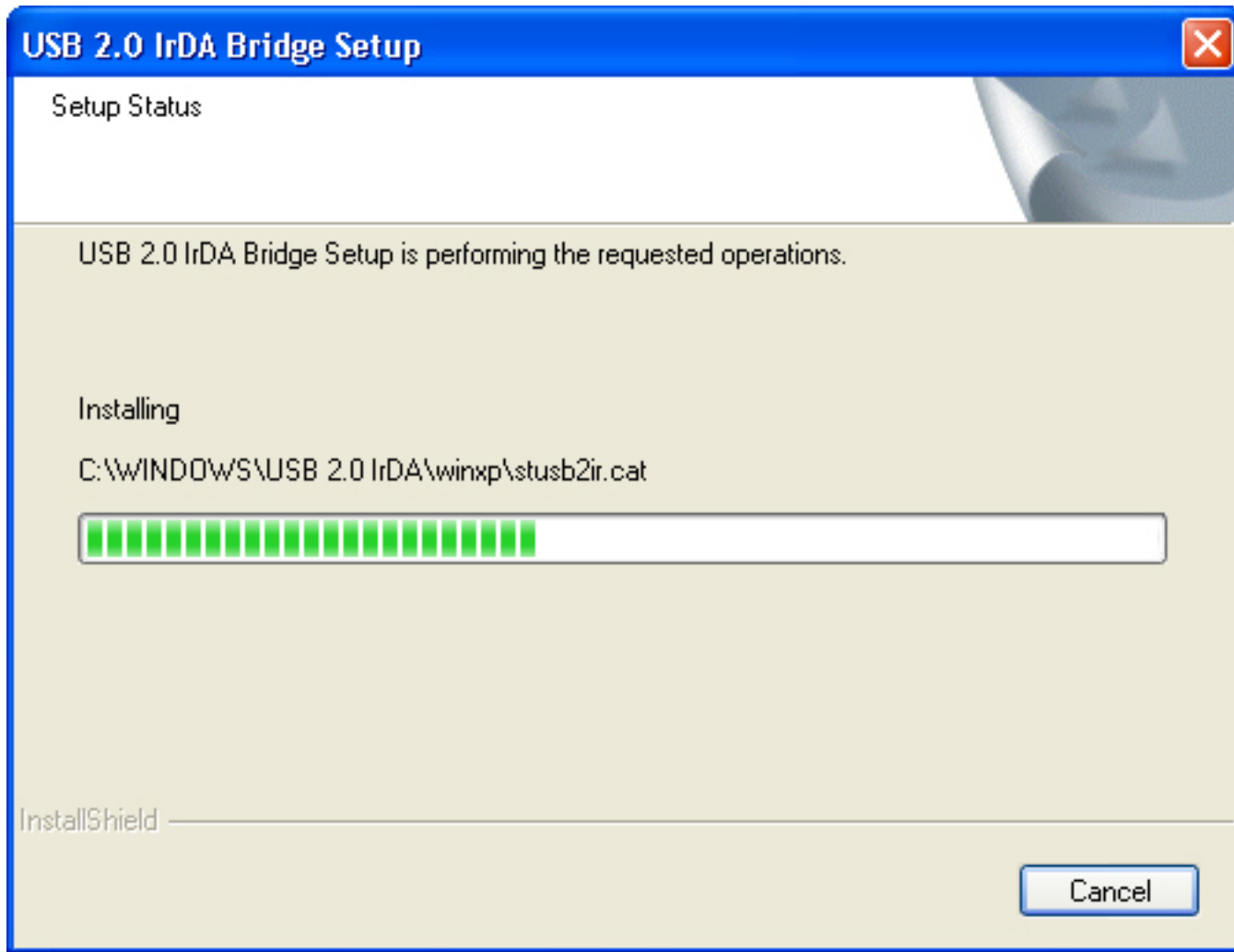
Click **Next** to continue:



To select a folder where setup will install files click **Browse** or to accept the suggested folder, click **Next**:



USB 2.0 IrDA Bridge Driver is being installed:



If you are using the Windows XP Operating System, a warning sign will pop up indicating that the software has not passed Windows Logo testing. Click **Continue Anyway** to proceed:

## Software Installation



The software you are installing has not passed Windows Logo testing to verify its compatibility with Windows XP. ([Tell me why this testing is important.](#))

**Continuing your installation of this software may impair or destabilize the correct operation of your system either immediately or in the future. Microsoft strongly recommends that you stop this installation now and contact the software vendor for software that has passed Windows Logo testing.**

Continue Anyway

STOP Installation

Click **Finish** to complete USB 2.0 IrDA Bridge Driver installation:



## USB 2.0 IrDA Bridge Setup



### **InstallShield Wizard Complete**

Please complete the installation now by plugging the device into the USB port. If the device is already attached to your USB port, please remove it briefly then reinsert it. Your operating system will complete the installation.

< Back

Finish

Cancel

### 3. Hardware Installation

Plug in the Polar IRDA USB 2.0 Adapter to the USB port of your computer. You will either

a) see a few pop-up screens momentarily as the device is being recognized (no user intervention required) OR

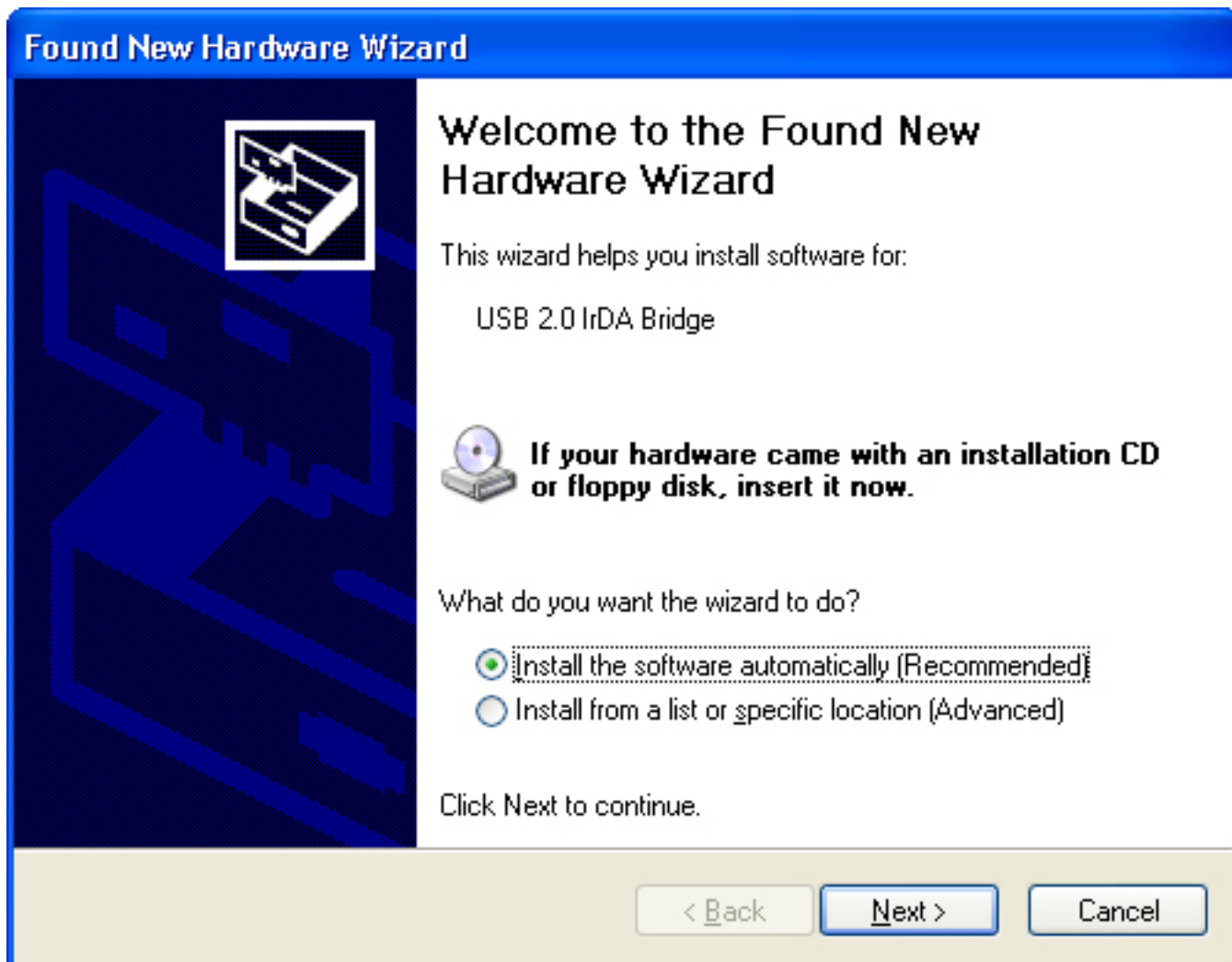


b) you are automatically taken through a New Hardware Installation Wizard.

In this case, plugging in the Polar IrDA USB 2.0 Adapter, triggers also the driver installation wizard.

**Welcome to the Found New Hardware Wizard** is shown.

We recommend you let the Wizard install the driver automatically (even if you have installed it before).



The wizard starts searching the USB 2.0 IrDA Bridge Driver:

## Found New Hardware Wizard

Please wait while the wizard searches...



USB 2.0 IrDA Bridge



< Back

Next >

Cancel

If you have not installed the Driver earlier, select the appropriate file now and click **Next**:

## Found New Hardware Wizard

Please select the best match for your hardware from the list below.



USB 2.0 IrDA Bridge

Description	Version	Manufacturer	Location
USB 2.0 IrDA Bridge	1.0.1638.0	SigmaTel, Inc.	e:\windriver\drvxp
USB 2.0 IrDA Bridge	1.0.1638.0	SigmaTel, Inc.	e:\windriver\drv2k
SigmaTel USB 2.0 IrDA Bridge	1.0.1638.0	SigmaTel, Inc.	e:\windriver\drvme
SigmaTel USB 2.0 IrDA Bridge	1.0.1638.0	SigmaTel, Inc.	e:\windriver\drv98



**This driver is not digitally signed!**

[Tell me why driver signing is important](#)

< Back

Next >

Cancel

The software has been found and is being restored and backed up:

## Found New Hardware Wizard

Please wait while the wizard installs the software...



USB 2.0 IrDA Bridge



< Back

Next >

Cancel

Click **Finish** to start using your new Polar IRDA USB 2.0 Adapter and USB 2.0 IrDA Bridge Driver:

## Found New Hardware Wizard



### Completing the Found New Hardware Wizard

The wizard has finished installing the software for:



USB 2.0 IrDA Bridge

Click Finish to close the wizard.

< Back

Finish

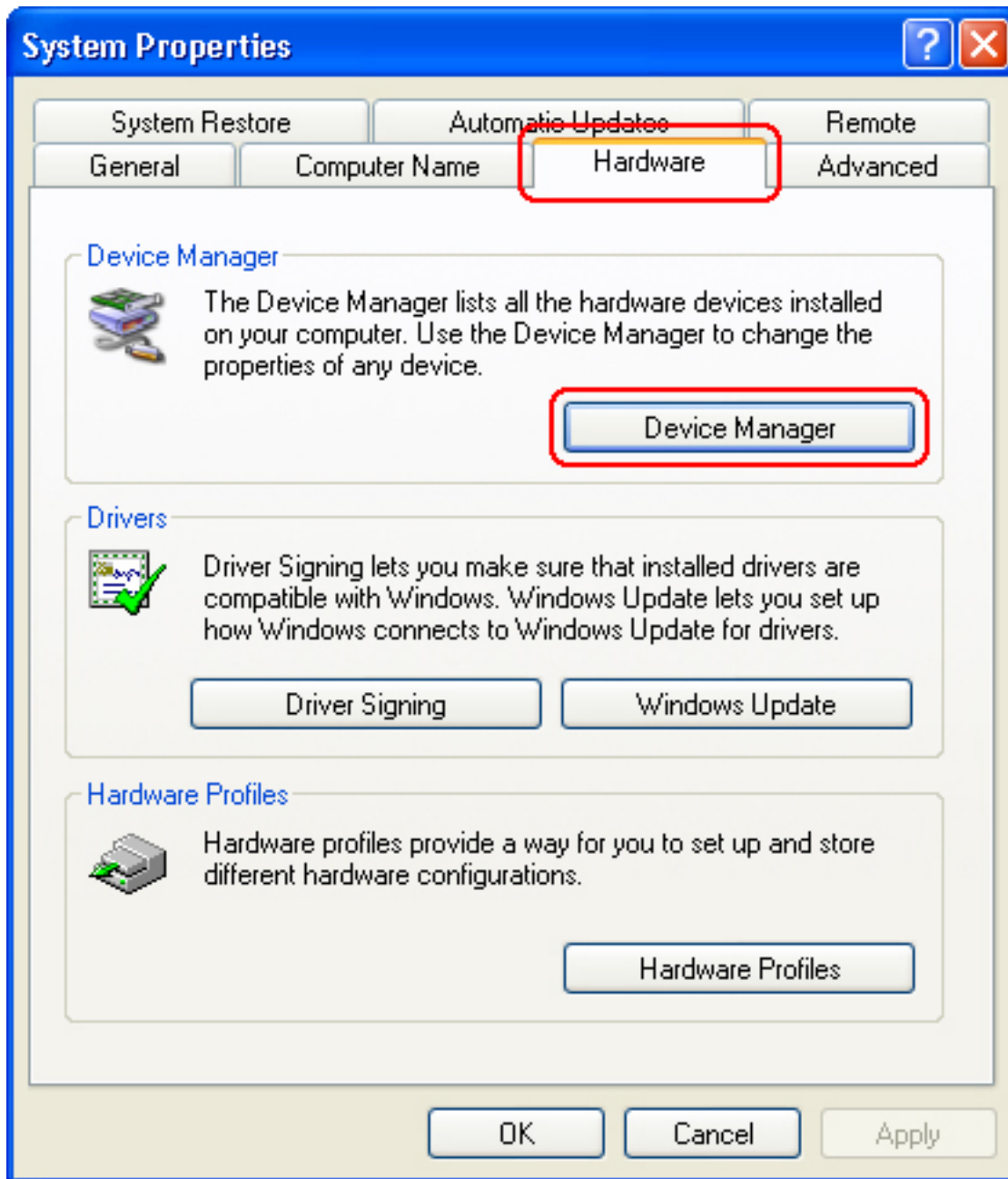
Cancel

## 4. Detection

The Polar IrDA USB 2.0 Adapter is installed correctly when the red LED light on the side of it starts to flash.

You can also check the installation by going to Control Panel > System > Hardware > Device Manager.





Provided the driver has been correctly installed, 'Device Manager' contents and 'Infrared Devices' now include USB 2.0-IrDA-Bridge.

## 5. Establishing IrDA connection with another infrared device

After confirming the detection of USB 2.0 IrDA Adapter, place your Polar infrared device and its IR window within one meter (39 inches) range from the infrared window at the end of the Adapter. The Polar device will be detected if it is within a 30 degree angle from the infrared window of the Adapter. Leave a minimum of 1 cm (0.4 inches) space between the devices.

An icon and a popup message will appear in the Toolbar indicating the Adapter is recognizing another infrared device within its range:

**Another computer is nearby**  
Click here to send files to the other computer.



While the two devices are connected and data transfer is in progress, you will see the **Data Transfer** icon in your Toolbar. Moving the cursor onto this icon will display the connection speed of IrDA link.



However, if you see an **Infrared Connection** icon as pictured below, the two devices are connected but no data is being transferred:



As **Infrared Connection** icon appears on Toolbar, the **Wireless Link** icon appears on your desktop:



## 6. Remove Polar IrDA 2.0 USB Adapter from the computer

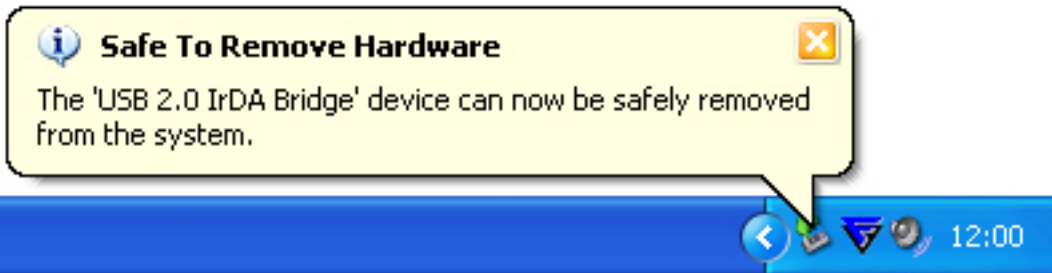
To safely remove the Polar IrDA 2.0 USB Adapter from your PC, click the **Safely Remove Hardware** icon:



Then select the **Safely remove USB 2.0 IrDA Bridge**

Once **Safe To remove Hardware** is shown you can unplug the Polar IrDA 2.0 USB Adapter from the PC:

6. Remove Polar IrDA 2.0 USB Adapter from the computer

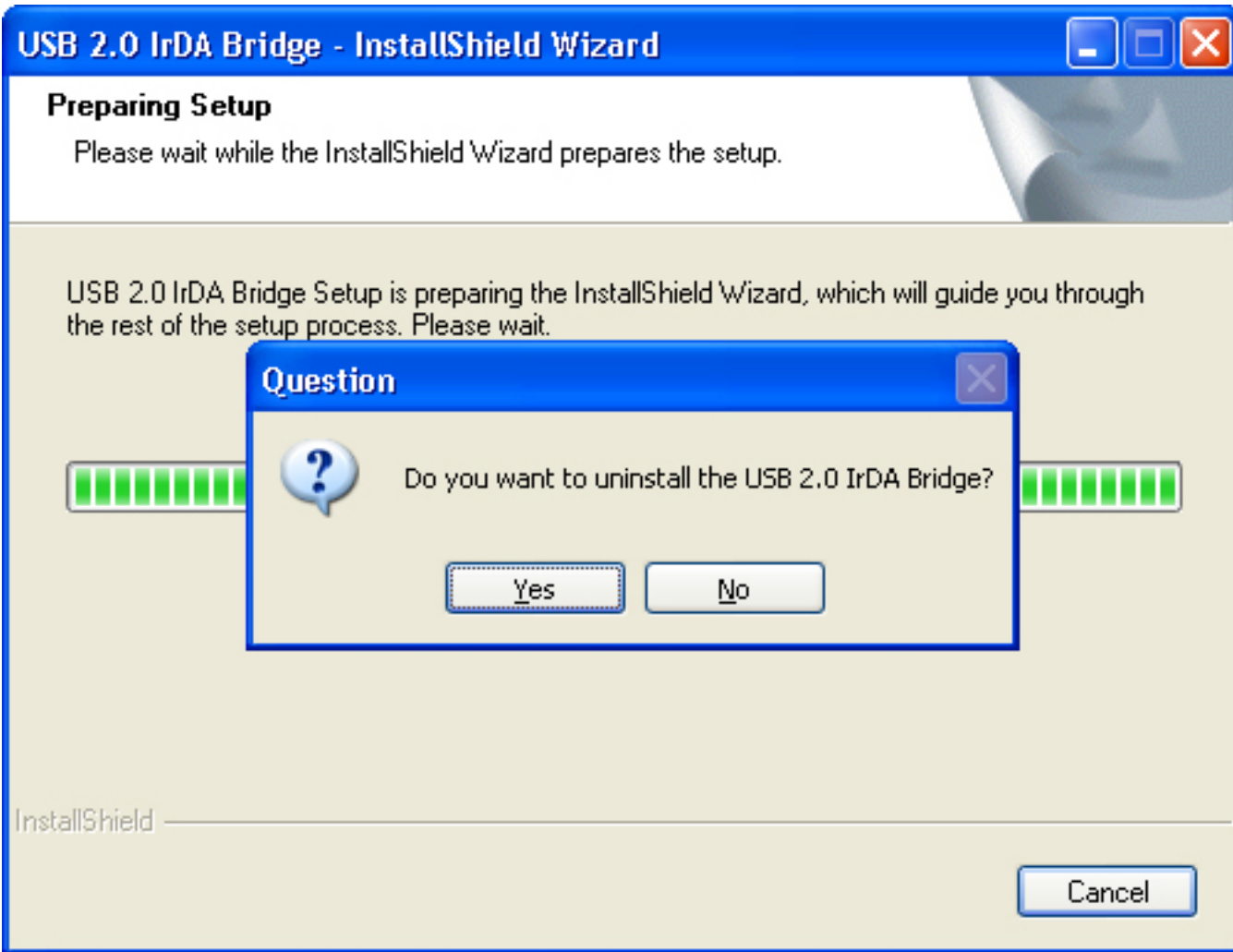


## 7. Uninstallation

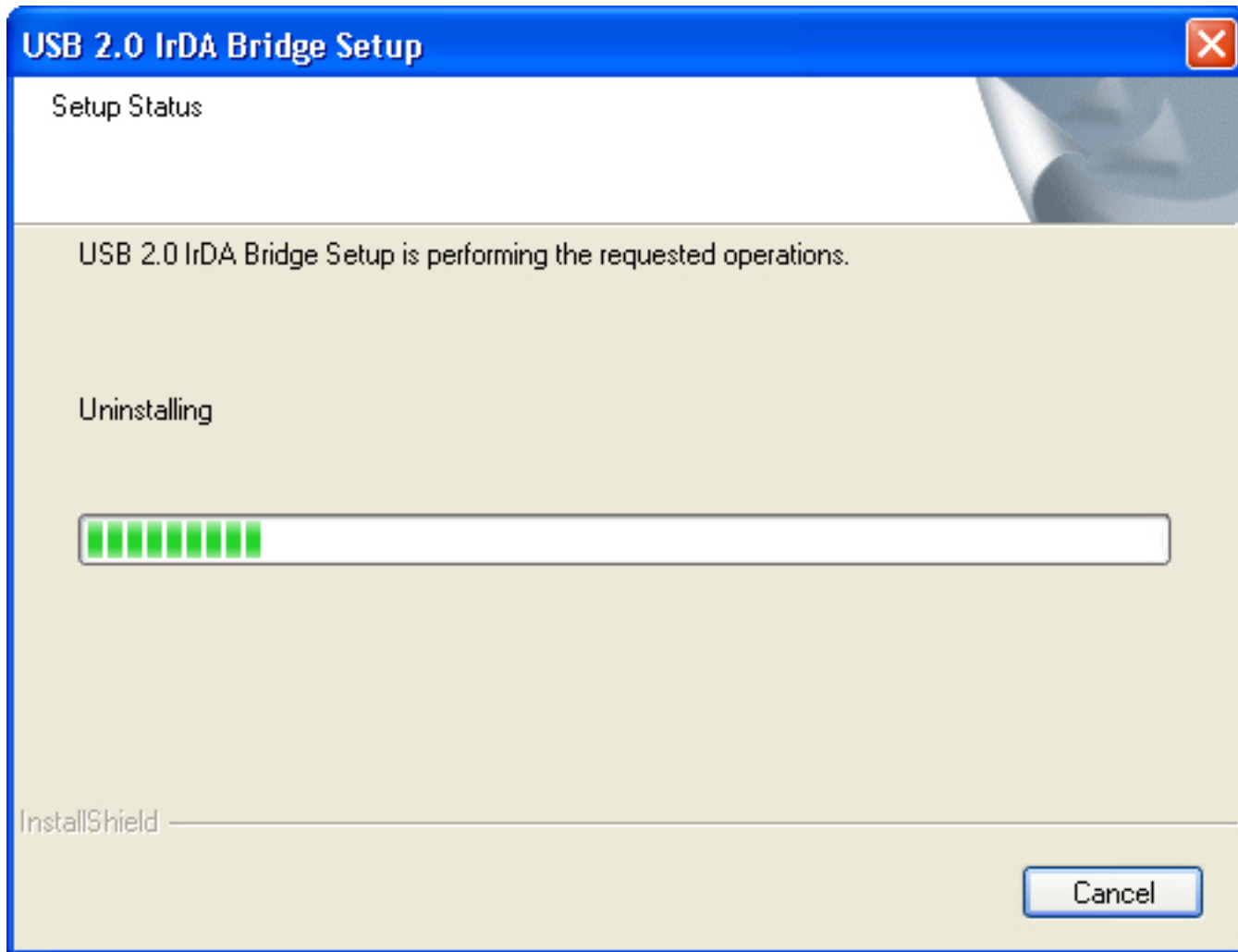
To remove the Polar USB 2.0 IrDA Bridge Driver from your PC, just re-install the CD into your PC and it will automatically launch the uninstallation procedure.

Click **Yes** to proceed:

Download from [Www.Somanuals.com](http://www.Somanuals.com). All Manuals Search And Download.

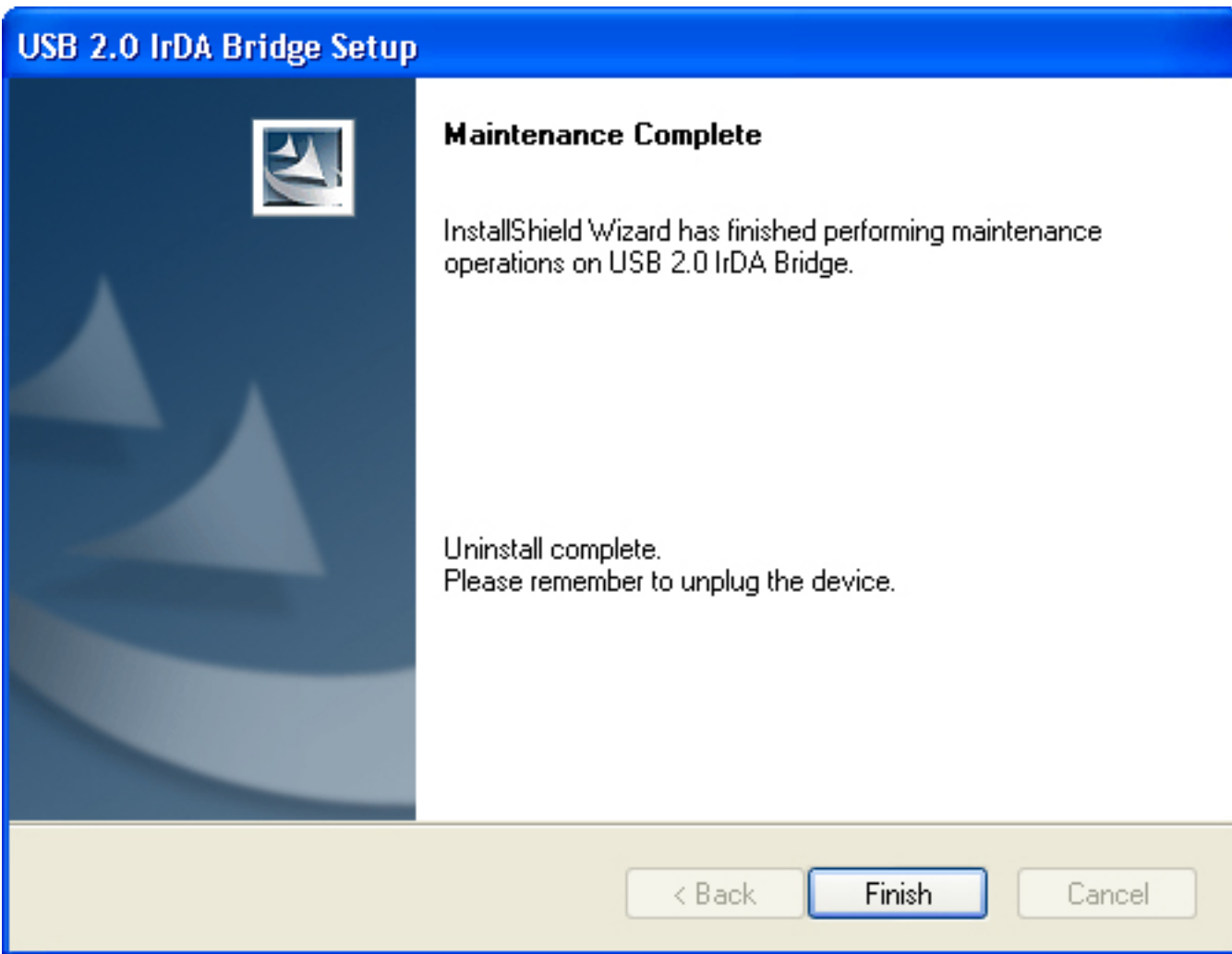


Driver is being removed from your PC:



Click **Finish** to complete the uninstallation:





Alternatively, go to **Settings > Control Panel > Add/Remove Program** and remove Polar USB 2.0 IrDA Bridge Driver.

## 8. Troubleshooting

If the communication fails, check that...:

- ... the infrared devices are positioned correctly. The infrared windows should be within 30 degree angle, no further than one meter (39 inches) and no closer than 1 cm (0.4 inches) from each other.
- ...nothing is blocking the path between the infrared windows of the devices.
- ...there is no other infrared device nearby.
- ... your Polar wrist unit is in the connection mode.
- ...the battery of your Polar wrist unit does not need replacing (i.e. low battery symbol on the display).

# 9. Technical Specifications

## Polar IrDA USB 2.0 Adapter

Connection

Connects directly to standard PC or Notebook USB port

Power Source

Direct from USB port, no external power required.

Speed

Transmits and receives data speed at 9.6K, 19.2K, 38.4K, 57.6K, 115.2K, 4Mbps (FIR), 16Mbps (VFIR)

Transmission Angle

max. 30 degrees

Transmission Distance

1 - 100 cm (0.4" - 39")

Microsoft Windows® 98SE/ME/2000/XP. Microsoft Windows® Service Pack update required before installation.

### Operation System Compatibility

MAC version 10.2 & 10.3

Compiled for Linux Kernel 2.4.26 & RedHat & Debian

Polar IrDA USB 2.0 Adapter is not water resistant Do not expose it to humidity or use it outdoors.  
Operating Temperatures: 0°C to 50 °C / 32 °F to 122 °F

This device complies with part 15 Subpart B /Class B of the FCC Rules. Operation is subject to the following two conditions: 1. This device may not cause harmful interference, and 2. this device must accept any interference received, including interference that may cause undesired operation.

# 10. Limited Polar International Guarantee

- This limited Polar International Guarantee is issued by Polar Electro Inc. for the consumers who have purchased this product in the USA or Canada. This limited Polar international guarantee is issued by Polar Electro Oy for the consumers who have purchased this product in other countries.
- Polar Electro Inc. / Polar Electro Oy guarantees to the original consumer/ purchaser of this product that the product will be free from defects in material or workmanship for two years from the date of purchase.
- **Please keep the receipt or stamped Polar Customer Service Card, which is your proof of purchase!**
- The guarantee does not cover damage due to misuse, abuse, accidents or non-compliance with the precautions; improper maintenance, commercial use, cracked or broken cases.

- The guarantee does not cover any damage/s, losses, costs or expenses, direct, indirect or incidental, consequential or special, arising out of, or related to the product. During the guarantee period the product will be either repaired or replaced at an authorized service center free of charge.
- This guarantee does not affect the consumer's statutory rights under applicable national or state laws in force, or the consumer's rights against the dealer arising from their sales/ purchase contract.



Polar products are electronic devices and are in the scope of Directive 2002/96/EC of the European Parliament and of the Council on waste electrical and electronic equipment (WEEE). These products should thus be disposed of separately in EU countries. Polar encourages you to minimize possible effects of waste on the environment and human health also outside the European Union by following local waste disposal regulations and, where possible, utilize separate collection of electronic devices.

Copyright © 2006 Polar Electro Oy, FIN-90440 KEMPELE, Finland.

Polar Electro Oy is a ISO 9001:2000 certified company. All rights reserved. No part of this manual may be used or reproduced in any form or by any means without prior written permission of Polar Electro Oy.

# 11. Polar Disclaimer

- The content of this manual is for informational purposes only. The products it describes are subject to change without prior notice, due to the manufacturer's continuous development program.
- Polar Electro Inc./Polar Electro Oy makes no representations or warranties with respect to this manual or with respect to the products described herein.
- Polar Electro Inc./Polar Electro Oy shall not be liable for any damages, losses, costs or expenses, direct, indirect or incidental, consequential or special, arising out of, or related to the use of this material of the products described herein.

Manufactured by:

## 11. Polar Disclaimer

**Polar Electro Oy, Professorintie 5, 90440 KEMPELE, FINLAND, Tel: +358 8 5202 100, Fax: +358 8 5202 300, [www.polar.fi](http://www.polar.fi)**



## Free Manuals Download Website

<http://myh66.com>

<http://usermanuals.us>

<http://www.somanuals.com>

<http://www.4manuals.cc>

<http://www.manual-lib.com>

<http://www.404manual.com>

<http://www.luxmanual.com>

<http://aubethermostatmanual.com>

Golf course search by state

<http://golfingnear.com>

Email search by domain

<http://emailbydomain.com>

Auto manuals search

<http://auto.somanuals.com>

TV manuals search

<http://tv.somanuals.com>