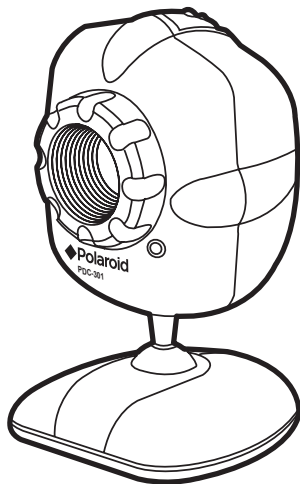




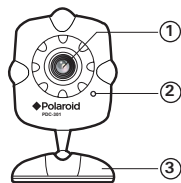
PDC 301



Web Camera User Guide

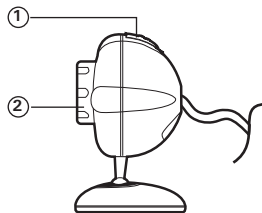
Product Overview

1. Lens
2. Power on LED
3. Camera stand



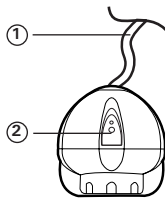
Front View

1. Snap shot button
2. Focus Adjustment Ring



Side View

1. USB Cable
2. Snap shot button



Top View

Table of Contents

1	Getting Started	4
	• Camera Package Contents	4
2	Installing the Software onto a Computer.....	5
	• Installing the software	5
	• Software included with your camera	6
	• Computer System Requirements	8
3	Operating the Web Cam	9
	• Setting up the Web Cam.....	9
	• Connecting the Web Cam to a Computer	10
	• Adjusting monitor display properties.....	10
	• Lighting Tips	11
	• Camera Interface	11
	• Taking Pictures Using PhotoStudio®	13
	• Taking Pictures Using VideoImpression™	14
	• Recording Video Clips Using VideoImpression™	15
	• Start NetMeeting	16
4	Troubleshooting Problems.....	17
	• Troubleshooting	17
5	Getting Help	18
	• Polaroid-digital Online Services	18
	• ArcSoft Software Help	18
6	Appendix.....	19
	• Technical Specifications	19
	• Uninstalling the Camera Driver.....	19
	• Tips, Your Safety & Maintenance.....	20
	• Regulatory Information	20

1 Getting Started

• Camera Package Contents



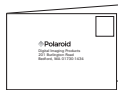
PDC 301



Notebook
Clip



Quick
Guide



Registration Card



PDC 301 CD-ROM includes
Polaroid PDC 301 Driver,
Arcsoft® Software® Suite(PC),
Microsoft® NetMeeting™ (PC),
Adobe® Acrobat® Reader (PC),
User Guide in PDF Format.

2 Installing the Software onto a Computer

• Installing the software

MAKE SURE TO INSTALL ALL THE SOFTWARE FROM THE WEB CAM SOFTWARE CD SUPPLIED BEFORE CONNECTING THE WEB CAM TO THE PC.

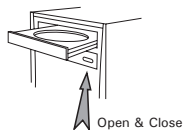
IMPORTANT!

If the computer requests you to insert the Windows operating system CD during the software installation, place the windows CD into the computer CD-ROM drive. The computer will install the necessary files from the CD automatically. When the Windows software appears to have finished the operation close the Windows screen. Remove the Windows CD and store safely.

NOTE:

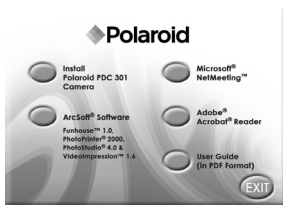
Microsoft® NetMeeting™ is already bundled with Windows® 2000 and XP OS. Users using Windows® 2000 or XP do not need to install this software from the CD.

1. Before you begin, close all other software applications open on your computer.
2. Place the Software CD supplied into the computer CD-ROM Drive.
3. The CD User Interface Screen will automatically launch.
4. With the mouse, click on each software interface button in turn and follow the on screen instructions.



NOTE:

If the setup screen doesn't appear after loading the CD, then you can manually start it by double-clicking the "My Computer" Icon on your desktop, then double-clicking the icon for the CD-ROM drive. When the CD-ROM window opens, double-click the "INSTALL-E.EXE" icon.



- **Software included with your camera**

The software CD contains the following software:

PhotoStudio® 4.0 *Picture Editing Software*

PhotoStudio® 4.0 is a full-featured, easy-to-use digital image editing program that provides a complete set of photo editing and retouching tools, plus a wide selection of special effects and enhancements. Its powerful features include a wide variety of input and output options, layers, multiple undo and redo functions, image management tools, editable text, multiple file format support and a lot more.

For further help on how to use PhotoStudio® 4.0, go to “Help” to access the Help Topics.

Visit <http://www.arcsoft.com> for all your FAQ’s, tips and technical support.

ArcSoft Funhouse™ 1.0 *Picture Editing Software*

ArcSoft Funhouse™ is an image entertainment application that enables users to create “photo fantasies” by combining their personal photos with a wide variety of fantasy backgrounds. Users can get their own images from digital cameras, scanners, disk drives and Photo CDs, and seamlessly combine them with just a few clicks of the mouse. The fantasy backgrounds include fictional characters, classic works of art, Olympic heroes, 50’s funnies, bathing beauties, muscle men and a lot more.

For further help on how to use ArcSoft Funhouse™ 1.0, go to “Help” to access the Help Topics.

Visit <http://www.arcsoft.com> for all your FAQ’s, tips and technical support.

ArcSoft PhotoPrinter® 2000 *Picture Printing Software*

ArcSoft PhotoPrinter® is an easy-to-use printing utility that enables the user to layout and print multiple images in different sizes quickly and easily on a single sheet of paper. The program offers a large selection of printing templates, including Kodak Digital Science Inkjet Photo Paper Templates and Avery-brand paper products. It also includes commonly used image-editing tools and a wide selection of templates for frames, edges and backgrounds for enhancing images.

For further help on how to use ArcSoft PhotoPrinter™ 2000, click the “?” on the top right hand corner to access the Help Topics.

Visit <http://www.arcsoft.com> for all your FAQ's, tips and technical support.

ArcSoft VideoImpression™ 1.6 *Movie Making Software*

ArcSoft VideoImpression™ is an easy-to-use video and image editing software program. The program enables users to create and edit new videos using existing video and image files - making desktop video presentations for home, business, and the Web.

Microsoft® Netmeeting™ *Web Cam software*

NetMeeting™ provides the most complete conferencing solution for the Internet and corporate intranet. Powerful features let you communicate with both audio and video, collaborate on virtually any Windows-based application, exchange graphics on an electronic whiteboard, transfer files, use the text-based chat program, and much more. Using your PC and the Internet, you can now hold face to face conversations with friends and family around the world.

Adobe® Acrobat® Reader *.PDF File Reading Software*

Adobe® Acrobat® Reader lets you view and print Adobe Portable Document format (PDF) file on all major computer platforms, as well as fill in and submit Adobe PDF forms online.

• **Computer System Requirements**

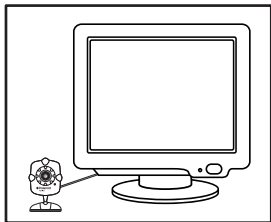
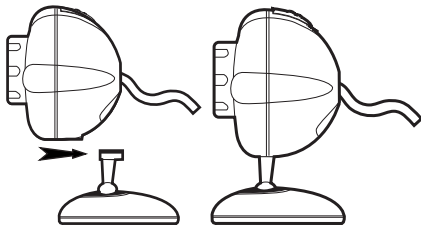
We recommend the following minimum requirements:

- Compatible with Microsoft® Windows® 98SE, ME, 2000 or XP
- Pentium® II 333MHz or Pentium® compatible processor
- 64MB RAM (128MB recommended).
- USB Port
- 200MB free disk space
- CD-ROM drive
- Colour monitor with high colour(16-bit) graphics capability or higher
- Standard mouse & keyboard
- External microphone & speaker (not included)

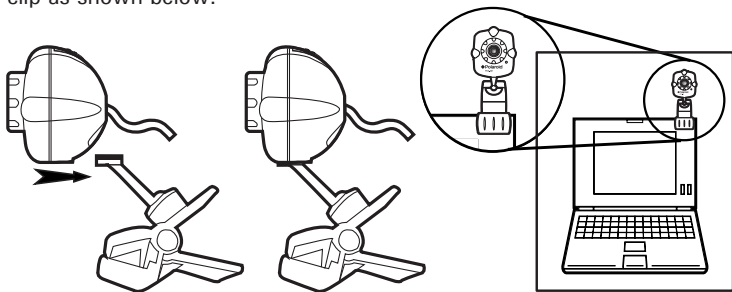
3 Operating the Web Cam

• Setting up the Web Cam

1. Assemble the web cam with the stand.
2. Put the Web Cam on top of your PC monitor or another flat surface.
3. Connect your microphone (not included) to your audio card's external microphone connector.



If you are using a notebook, assemble the web cam with the notebook clip as shown below:



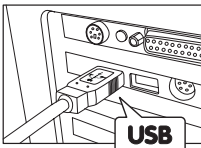
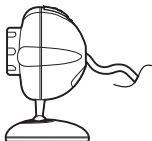
• Connecting the Web Cam to a computer



NOTE:

Before operating the Web Cam, connect it to the PC with the USB cable on the camera.

Plug the USB cable into the socket marked  on your computer.



IMPORTANT NOTE:

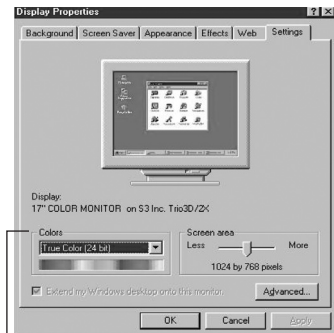
- Close all applications which connected to the web cam before disconnecting the web cam from the computer. Unexpected disconnection from the computer may cause software conflict.
- Do not use a USB hub port that does not provide power to the camera.

• Adjusting monitor display properties

Your monitor settings may need to be adjusted for better quality displays.

To check your monitor settings:

1. Right click on the desktop, choose "Properties".
2. In the Display window, click on the Settings tab.
3. From the colour palette field, select the desired setting (High Colour or True Colour). For best display quality, we recommend you select True Colour.






Adjust Monitor setting under the Colour

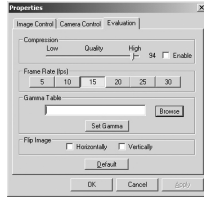
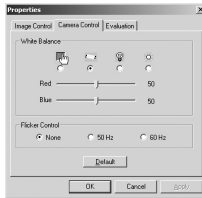
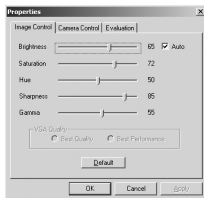
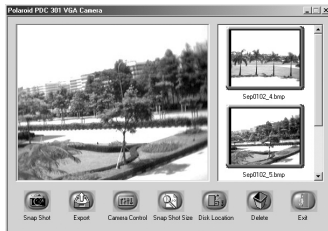
• Lighting Tips


- Use sufficient lighting.
- Place the light source behind the camera and facing the subject. If you cannot avoid backlight (i.e. light source pointing directly at the camera lens and behind the subject), you may enable backlight compensation with the camera software.
- Maintain consistent a lighting environment, i.e. do not mix fluorescent and other light types.
- Do not aim the camera directly at the light source.

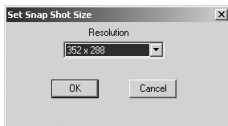
• Camera Interface


The following description shows you how to manage the camera interface.

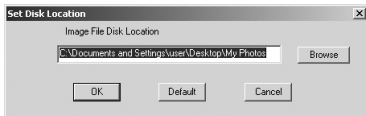
1. : Press this button to take a snap shot.
2. : Press this button to transfer the selected pictures to the Application Programs.
3. : Press this button to adjust the camera settings (ie: Colour setting, Whitebalance , Ficker Control, Compression Rate, Frame Rate, Gamma, Flip Image).




4. : Press this button to select the snap shot size.





5. : Press this button to set the disk location which stores the pictures to be taken.



 **NOTE:**

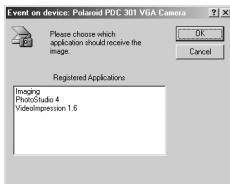
In order to find your files easily, it is recommended to set the disk location as "My Documents \ my photos".

6. : Press this button to delete the selected picture.
7. : Press this button to exit the camera interface.

• Taking pictures using PhotoStudio®

1. Connect the **PDC 301** to your computer.
2. Hold down the snap shot button until the application list prompts up.

Snap shot Button

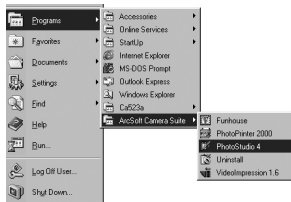


3. Double click "PhotoStudio 4 " in the prompt up window to launch this program.
4. A window box will automatically pop out. Position your Web Cam to your object. Adjust the Focus Adjustment Ring until the image is sharp and clear. Press the "Snap shot" icon on your computer or the snap shot button on the camera to take a picture.



NOTE:

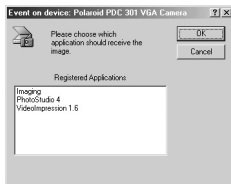
If no action when you press the snap shot button, or you can't find "PhotoStudio" in the list, you can launch the PhotoStudio by yourself. Go to Start -> Programs -> Arcsoft® Software Suite -> PhotoStudio 4.0 .



• Taking pictures using VideImpression™

1. Connect the **PDC 301** to your computer.
2. Hold down the snap shot button until the application list prompts up.

Snap shot Button

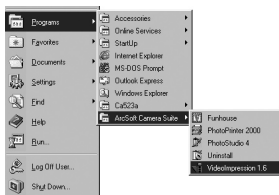


3. Double click "VideImpression 1.6" in the prompt up window to launch this program.
4. A window box will automatically pop out. Position your Web Cam to your object. Adjust the Focus Adjustment Ring until the image is sharp and clear. Press the "Snap shot" icon on your computer or the snap shot button on the camera to take a picture.



NOTE:

If no action when you press the snap shot button, or you can't find "VideImpression" in the list, you can launch the VideImpression by yourself. Go to Start -> Programs -> Arcsoft® Software Suite -> Video Impression 1.6 .



• Recording video clips using VideoImpression™

1. Connect the **PDC 301** to your computer.
2. Hold down the snap shot button until the application list prompts up.
3. Double click "Video Impression" in the list to launch this program.
4. Adjust the Focus Adjustment Ring until the image is sharp and clear.
5. Press "Record" button to start capture.
6. When you finish, press "Pause" button to stop and then press "Save" button.
7. Select the destination folder and enter a name for the video file.
8. Click "Save" button to save the video file.
9. A small window "Add to album" will prompt out for saving your video file as templates.



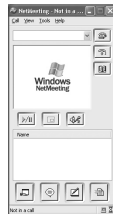
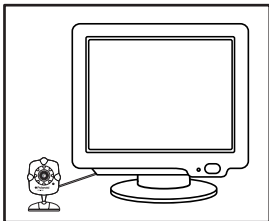
• Start NetMeeting



NOTE:

For Windows® XP/2000 users who use NetMeeting for the first time , Go to Start -> Run -> type in "conf" ->click "OK" and then follow the on-screen set up instructions to set up NetMeeting.

1. Double click the "NetMeeting" icon on the desktop or select the "NetMeeting" icon from the Windows Start Menu.
2. If you need further help on how to use Microsoft® NetMeeting™, select the "Help" under the menu bar and choose the topic you need. Or you can visit the website: <http://www.microsoft.com/windows/netmeeting>.



4 Troubleshooting Problems

The trouble shooting guide is designed to help you. If problems continue, please contact your local customer support hot-line. See your registration card for help line contact details.

Symptom	Problem	Solution
Cannot connect to video capture device in Arcsoft® Videolmpression™ or Capture device was not detected in Arcsoft® Videolmpression™	Camera Driver not successfully installed	Shut down all other applications and attempt to re-install the driver, or download the updated driver from www.polaroid-digital.com and install the updated driver.
	Connection failure	Check all cables connections are secured
	Source not selected correctly	Make sure "Polaroid PDC 301 VGA camera" being selected
Image not sharp	Focus not correct	Adjust the focus by turning the Focus Adjustment Ring
My CD Installaion wizard does not work	The auto installation file is switched to off or The CD-ROM is disconnected	Go to the computer desktop. Right click on "My Computer". Click "Properties". Select "Device Manager". Double click on the "CD-ROM", double click on "CD-R" (normally the manufacturer's name). Click on "Settings". Ensure "Auto insert notification" is ticked. If you change the settings the computer will ask you to restart your PC. Click "Yes"
The application can't launch when press shutter button	System need to restart	Please still connect the PDC 301 to PC and then restart the computer

Please also refer to the help files & User Guide that accompany the enclosed applications. For further information and support, please visit our website: <http://www.polaroid-digital.com>.

5 Getting Help

• Polaroid-digital Online Services

Website: <http://www.polaroid-digital.com>

• ArcSoft Software Help

For North America

ArcSoft HQ Support Centre
(Fremont California, CA)

Tel: 1-800-762-8657

(toll free number)

Fax: 1-510-440-1270

E-mail: support@arcsoft.com

For China

ArcSoft China Support Centre (Beijing)

Tel: 8610-6849-1368

Fax: 8610-6849-1367

E-mail: china@arcsoft.com

For Oceania

ArcSoft Australian Support Centre
(Baulkham Hills, New South Wales)

Tel: 61 (2) 9899-5888

Fax: 61 (2) 9899-5728

E-mail: support@supportgroup.com.au

For South & Central America

Tel: 1-510-979+5520

Fax: 1-510-440-1270

E-mail: latinsupport@arcsoft.com

For Japan

ArcSoft Japan Support Centre (Tokyo)

Tel: +81-03-3834-5256

Fax: +81-03-5816-4730

Web: <http://www.mds2000.co.jp/>
arcsoft

E-mail: japan@arcsoft.com and
support@mds2000.com

For Europe/Middle East/ Africa & Rest of the World

ArcSoft Europe Support Centre
(Ireland)

Tel: +353-(0) 61-702087

Fax: +353-(0) 61-702001

E-mail: europe@arcsoft.com

Visit <http://www.arcsoft.com> for technical support and frequently asked questions (FAQ's).

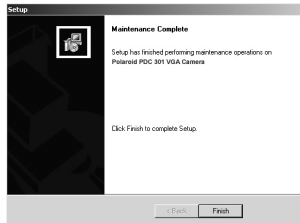
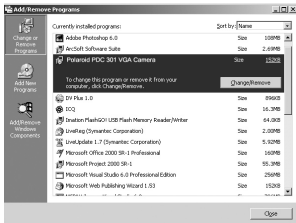
6 Appendix

• Technical Specifications

- Memory: N/A
- Image Sensor: 1/5" CMOS, VGA
- Web-cam frame rate: VGA - 7-10fps (approx.)
CIF - 7-10fps (approx.)
- Still Image: High Resolution (VGA) - 640 x 480 pixel
Low Resolution (QVGA) - 320 x 240 pixel
- Video Clip: unlimited when connected to the computer via video capture software
- File Format: (Still Image - JPEG format, Video Image - AVI format)
- Interface: USB
- External Connector: USB
- Power Supply: USB Port
- Operating System: Microsoft® Windows® 98SE, Me, 2000 or XP

• Uninstalling the Camera Driver

1. Select control panel from the start menu.
2. Select Add/ Remove Program.
3. Select "Polaroid PDC 301 VGA Camera". Select "Change/ Remove" and follow the onscreen prompts.



• **Tips, Your Safety & Maintenance**

Your camera should only be operated within the following environmental conditions:

- 41-104° Fahrenheit; 5-40° Celsius
- 20% - 85% relative humidity, non-condensing Camera performance may be affected outside these conditions.



Camera Cautions

- ALWAYS seek advice from a service dealer.
- NEVER immerse any part of the camera or its accessories into any fluid or liquid.
- ALWAYS disconnect the camera from your PC before cleaning it.
- ALWAYS remove dust or stains with a soft cloth dampened with water or neutral detergent.
- NEVER place hot items on the surface of the camera.
- NEVER attempt to open or disassemble camera as this will affect any warranty claim.

• **Regulatory Information**

FCC Notice

This device complies with Part 15 of FCC Rules. Operation is subject to the following two conditions: (1) This device may not cause harmful interference, and (2) This device must accept any interference received, including interference that may cause undesired operation.

Warning: Changes or modifications to this unit not expressly approved by the party responsible for compliance could void the user's authority to operate the equipment.

NOTE: This equipment has been tested and found to comply with the limits for Class B digital device, pursuant to Part 15 of the FCC Rules. These limits are designed to provide reasonable protection against harmful interference in a residential installation. This equipment generates, uses and can radiate radio frequency energy and, if not installed and used in accordance with the instructions, may cause harmful interference to radio communications.

However, there is no guarantee that interference will not occur in a particular installation. If this equipment does cause harmful interference to radio or television reception, which can be determined by turning the equipment off and on, the user is encouraged to try to correct the interference by one or more of the following measures:

- Reorient or relocate the receiving antenna.
- Increase the separation between the equipment and receiver.
- Connect the equipment into an outlet on a circuit different from that to which the receiver is needed.
- Consult the dealer or an experienced radio/ TV technician for help.

Shielded cable must be used with this unit to ensure compliance with the Class B FCC limits.

UK 1102

Part No.: OM837443 R1

Printed in China

Free Manuals Download Website

<http://myh66.com>

<http://usermanuals.us>

<http://www.somanuals.com>

<http://www.4manuals.cc>

<http://www.manual-lib.com>

<http://www.404manual.com>

<http://www.luxmanual.com>

<http://aubethermostatmanual.com>

Golf course search by state

<http://golfingnear.com>

Email search by domain

<http://emailbydomain.com>

Auto manuals search

<http://auto.somanuals.com>

TV manuals search

<http://tv.somanuals.com>